

MENLO PARK election: More money reported from union, developers, real estate interests. Page 5

The Almanac

THE HOMETOWN NEWSPAPER FOR MENLO PARK, ATHERTON, PORTOLA VALLEY AND WOODSIDE

Cycling:
Romantic,
heady and
healthful.
**Health &
Fitness**
Section 2



NOVEMBER 8, 2006

www.AlmanacNews.com | VOL. 42 NO. 10

Word from Sacramento:

Phone Call Starts Woodside on Career as 'City'

To Protect Its Rustic Charm
Woodside Becomes a Town

Happy Birthday:
Town of Woodside

ago today the Town of Woodside was

Newest City
Off to Start

(Continued from Page 1)
establishing the city, as temporary
city clerk.

Only Paid Employee

The only paid city employee, she

receives her salary from funds

provided by the incorporation pro-

cedure for fil-

ings until

the town

had its first

two days

its first anniversary.

One who has "been" in

Mayor William L. Lowe, "as a

man of government, at

a moment of need, we have

learned there are some prob-

lems that can't be solved overnight.

And the council and planning

commission have worked—lit-

erally—day and night to get

things done."

He urged all our present

Town Clerk Lena Lowe, "be-

cause we couldn't have done it

without you. In less than a

year, coming here from Mount-

ain View, you have become

Mrs. Woodside."

Citizens in the legislature rose

to praise the work of the coun-

cil. Delegation General W. D.

Lippen, 119 Sacramento, said:

"You have shown us in

one year the wisdom of in-

corporating Woodside. Jack

City of 221 Highland Terrace

THE BIG 5-0

Woodside celebrates 50 years as a town

Lowé Named
First Mayor
Of Woodside

First Mayor of Woodside is 41-year-old William L. Lowé, a resident of the town for 17 years and a candle manufacturer. He was elected unanimously by the town councilmen at their meeting Friday. J. Graham was pro-tem.

The first comment after being elected was a plea for bi-partisanship in solving the problems of the new city. Woodside passed in a margin of 646 to 100, a long, bitter fight between proponents and opponents.

"Keep Woodside the way it is as possible," was the plea during his short address in speech.

Lowé, who resides on Albion Avenue with his wife, Peggy, and three children, David, 15, Elinore, 13, and Jean, 8, was general manager of Pabco before purchasing the

Telephone Call Puts Woodside

on 'City' Career

WOODSIDE—This rural com-

munity got its city machinery secretary of state.

[Story begins on page 14]

Woodsiders Vote Saturday on Incorporation and City Council

SECOND SECTION
Redwood City Tribune

Residents Due To Vote
on Incorporation Plan

Councilman Selah Chambers Jr. was promptly elected. And the new city council met in a session of adoption of ordinances to put the city in business."

REDEFINING QUALITY SINCE 1990

Reading between the emotional line makes the difference between finding a house and a home.



ATHERTON

Incredible 4bd/3ba remodeled and expanded ranch with chef's kitchen. Bonus room adjacent to garage ideal for gym. Luxurious master. Landscaped grounds with level lawn, firepit, pool/ spa. Menlo Park schools.

\$3,750,000



WOODSIDE

Lovely western hills view property on a flat acre with a custom 4 bedroom, 2870+/-sf home. Expansive lawns and gardens frame the view and create a relaxing retreat.

\$3,400,000



PALO ALTO

Moments to downtown Palo Alto, this stylish renovation by R & M Properties reflects charm, innovative design and quality throughout. The lovely 4bd/2.5ba floorplan offers a living room with fireplace, family room with built-in cabinetry, and a separate office or den.

\$2,295,000



Inside

This week's news, features and community events.

FIRST SHOT



The Almanac/Marion Softky

Musicians in motion

The high-stepping Stanford Band, as is the fashion at a groundbreaking ceremony for a \$379 million X-ray laser device, brought along their hard hats as they entertained about 1,000 people on Oct. 20 at the Stanford Linear Accelerator Center in Menlo Park.

Menlo Park

- Council election: More money reported from union, developers, real estate interests. **Page 5**
- O'Brien Group spends big to fight referendum. **Page 8**
- Urban forest is green but growing fragile. **Page 11**

Election 2006

- High school seniors help out at polls. **Page 5**
- Check AlmanacNews.com for election night updates. **Page 5**
- Measure A campaign raises almost \$200,000. **Page 17**

Also Inside

Around Town	29
Editorial.....	22
Calendar	31
Letters	22
Police Calls	21
Schools	18

Portola Valley

- Plan unfolds for bulk buy of solar arrays in Portola Valley, Ladera. **Page 7**

Woodside

- Woodside and Portola Valley may get \$2 million from county in settlement of property-tax dispute. **Page 9**

Sports

- M-A's perfect football season ends with loss to Aragon. **Page 19**

On the cover

With a phone call and a picture-perfect photo op, Woodside officially became a town on Nov. 16, 1956, following a bruising and divisive incorporation campaign. New city clerk Jane Hicks holds the phone up for council members Selah Chamberlain (left), Mayor William Lowe and Rose O'Neill to hear the good news. This month, the town celebrates its 50th anniversary. Photo collage by Marjan Sadoughi. Story begins on **Page 14**.

CALLING ON THE ALMANAC

The Almanac offices are at **3525 Alameda de las Pulgas, Menlo Park, CA 94025**.

For Classified ads, call **854-0858**
For all other calls, phone **854-2626**
News: **Ext. 213**
Display advertising: **Ext. 233**
Fax: **854-0677**

■ E-mail news to (no photos please):
editor@AlmanacNews.com
■ E-mail news photos with captions to:
photo@AlmanacNews.com
■ E-mail letters to the editor to:
letters@AlmanacNews.com

To request free delivery, or stop delivery, of The Almanac in zip code 94025, 94027, 94028 and the Woodside portion of 94062, call **854-2626**.

THE ALMANAC (ISSN 1097-3095 and USPS 459370) is published every Wednesday by Embarcadero Publishing Co., 3525 Alameda de las Pulgas, Menlo Park, CA 94025-4455. Periodicals Postage Paid at Menlo Park, CA and at additional mailing offices. Adjudicated a newspaper of general circulation for San Mateo County, the Almanac is delivered free to homes in Menlo Park, Atherton, Portola Valley and Woodside. Voluntary subscriptions for \$30 per year or \$50 per 2 years are welcome from residents of the above circulation area. Subscription rates for businesses and for residents of other communities is \$50 per year and \$80 for two years. POSTMASTER: Send address changes to the Almanac, P.O. Box 7008, Menlo Park, CA 94026-7008. Copyright ©2006 by Embarcadero Publishing Co., All rights reserved. Reproduction without permission is strictly prohibited.



Timothy Fidge & Co.
custom jewelers
642 Santa Cruz Avenue ~ Menlo Park
(650) 323-4653

FIRST SESSION FREE

Club Z! One-On-One In-Home Tutoring!

- All Subjects • PreK - Adult • Study Skills • Math • Reading • Writing
- Foreign Languages • SAT Prep • LD/ADD • Affordable Rates
- No Long-Term Contracts • Qualified Teachers • Flexible Schedules



**FIRST
SESSION
FREE!
Call Today!**

650-948-0844
www.clubztutoring.com

Serving Atherton, Menlo Park,
Portola Valley, Redwood City,
San Carlos, & Woodside



Is your
addiction
hurting
anyone?

THE SEQUOIA CENTER helps families recover the balance in their lives from the effects of abusing alcohol and other drugs. Our services are offered in a warm and caring environment by trained staff dedicated to helping individuals gain control over their lives.

The Sequoia Center is licensed through the State of California to deliver:

- Medical Detoxification
- Outpatient Treatment (Day & Evening)
- Residential Treatment
- Integrated Behavioral Health Programs /Partial Hospitalization /Day Treatment

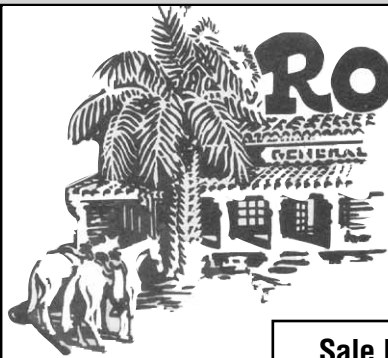
—Call today 1-800-997-5504
to schedule a free, confidential
assessment with one
of our Specialists.

**THE
sequoia
CENTER**

CHEMICAL DEPENDENCY TREATMENT SERVICES
650 Main Street, Redwood City
2660 Solace Place, Suite A, Mountain View
800-997-5504 • www.sequoiacenter.com



HEALTH • HOPE • RECOVERY



ROBERTS

A TOWN MARKET PLACE

3015 WOODSIDE ROAD

WOODSIDE, CA 94062

650-851-1511

Open 6:30AM - 8PM

NOW at Roberts
SUSHI
Made Fresh Daily

Sale Dates: November 8, 9, 10, 11

www.robertsmarket.com

PRODUCE

Sweet and Crisp

FUJI APPLES



99¢ lb.

High in Vitamin "C"!!

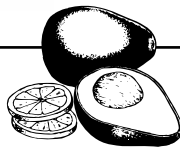
KIWI FRUIT



4 for \$1.00

Fresh

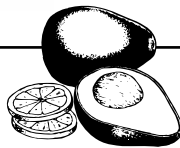
SPRING MIX



\$2.99 lb.

Large

HAAS AVOCADOS



\$1.29 ea.

The "No Special Occasion" Bouquet

All too many people need a special occasion to give flowers. For instance, children will be sure to send their mothers beautiful bouquets on Mother's Day (as they should!), and husbands will often send a dozen roses to their wives on their anniversaries (as they should!). But remember – there are 363 other days of the year when the unexpected gift of flowers would be equally appreciated. For instance, imagine your girlfriend's surprise when she receives flowers with a note on "I Think I'm Falling in Love Day." There is also "You Mean More to Me Than You Know (and I Usually Show) Day," which is appropriate for anyone at any time. Flowers sent on these "occasions" usually make the biggest impression.

At ROBERTS MARKET, we feature a wonderful selection of bouquets. We can help you find the perfect arrangement for any day. We recommend giving bouquets to loved ones whenever you can, it makes a great impression. We also offer a wide variety of foods from all over the world. We are your source for specialty foods including Indian, Asian, European and other specialties.



Hint: While flowers make a huge impression, don't forget that the accompanying note is usually read with breathless anticipation.

GROCERY

CLOVER ORGANIC FAT FREE MILK

1/2 gallon – Also Whole – 2% – 1%

\$2.29

NABISCO ORIGINAL PREMIUM SALTINE CRACKERS

1 lb. box – Also Unsalted – Fat Free

\$1.99

STOUFFER'S LEAN CUISINE MACARONI & CHEESE

10 oz. – Also Cheese Lasagne Florentine

\$1.69

KELLOGG'S RAISIN BRAN CEREAL

20 oz. – Also Smart Start

\$2.99

BUDWEISER BEER

12 oz. 12-pack cans – Also Light – Plus Calif. Redeem Value

\$6.99

FANCY FEAST CAT FOOD

3 oz. can

49¢

DELI

Roberts Market Thanksgiving Menu 2006

*Orders must be placed by Sunday, November 19th & picked up by Wednesday, November 22nd.

Free-Range Diestel Ranch Turkeys

Small 10 - 12lbs. ~ Serves 8 to 10 people **\$48.00**

Large 16 - 18lbs. ~ Serves 14 to 16 people **\$58.00**

*The Diestel turkeys are pre-roasted and will need approximately 2 hours to reheat at 300° in your oven.



Starters & Sides

PUMPKIN SQUASH SOUP

Savory with a hint of curry and cream \$8.50 per qt.

STUFFED BAKED BRIE

With your choice of caramel apple, or cranberry chutney \$14.50 each

GREEN BEAN ALMANDINE

With caramelized shallots and butter **\$5.50 per pint. \$11.00 per qt.**

SWEET POTATO PUREE

Seasoned with nutmeg & cinnamon and candied walnuts and maple syrup **\$5.75 per pint. \$11.25 per qt.**

ROASTED BUTTERNUT SQUASH

With sage butter and brown sugar **\$5.75 per pint. \$11.25 per qt.**

WHIPPED POTATOES

Traditional potatoes with butter & cream **\$5.00 per pint. \$10.00 per qt.**

Freshmade Cranberry Sauce

Delicious with a hint of orange **\$4.50 per pint. \$9.00 per qt.**



Dressings & Gravy

TRADITIONAL STUFFING ~

With mushrooms, celery, onions, & water chestnuts **\$5.00 per pint. \$10.00 per qt.**

CORNBREAD SAUSAGE STUFFING ~

With dried cranberries and apricots **\$5.00 per pint. \$10.00 per qt.**

PORCINI MUSHROOM GRAVY ~

Rich and creamy **\$5.50 per pint. \$11.00 per qt.**

ONION SAGE GRAVY ~ Red wine,

caramelized onion & sage flavor this rich gravy **\$5.50 per pint. \$11.00 per qt.**

Desserts

☛ **UPPER CRUST BAKERY ~**

8" Pies, serve 6 to 8. \$14.99

Apple, Apple Streusel, Berry Supreme, Pumpkin, Pumpkin Amaretto, Cranapple, & Pecan

☛ **RUBICON BAKERY ~**

8" Tarts, serves 6. \$14.99

Apple Almond, Apple Cranberry, Caramel Nut, & Lemon

6" Cakes, serves 6. \$14.99

Pumpkin Cheesecake, Chocolate Cake, Chocolate Turtle, & Carrot Spice Cake



WINE

C&T CELLARS

(COLLEEN & TRENT MOFFETT)

Exceptional wines at everyday prices!

2005 "Backyard," Chardonnay, Napa Valley \$15.99

A beautiful blend of 50% stainless, 50% barrel fermented Chardonnay. The wine is rich and buttery, with bright, refreshing crispness.

2005 "Patio" Pinot Noir, Napa Valley, Carneros \$19.99

A rich, full, plush Pinot from the great Hudson Vineyard. The grapes cost \$3,500/ton!!!

2004 "Rooftop Red" Cabernet Sauvignon, Napa Valley \$19.99

A bold, complex Cab from grapes grown on the back side of Howell Mountain. This serious effort has real depth and character.

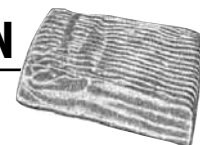
The above wines assort for a 10% case discount.

MEAT/POULTRY

Special This Week from Roberts

COUNTRY-STYLE BACON

\$4.98 lb.



APPLEWOOD BACON

\$10.98 lb.

CHICKEN APPLE SAUSAGE W/CINNAMON

\$4.98 lb.

CHICKEN CAMBRIDGE SAUSAGE LINKS

\$4.98 lb.

Local News

MENLO PARK | AHERTON | WOODSIDE | PORTOLA VALLEY

Menlo Park election: More money reported from union, developers, real estate interests

■ Union spending hits \$22,000; Boyle, Duboc, Winkler collect another \$3,000 each.

By Rory Brown
Almanac Staff Writer

A local union is spending big to oust Menlo Park City Council candidates Lee Duboc and Mickie Winkler, as the two candidates and their ally, John Boyle, cumulatively received another \$9,000 from developers, real estate interests and a retired auto dealership president.

The San Mateo Central Labor Council has poured \$22,180 into

the council election as of Nov. 3, according to independent expenditure reports filed Nov. 3 with the Secretary of State's office.

Of those costs, \$13,382 has gone toward ousting incumbents Duboc and Winkler, and \$8,298 has been spent campaigning in favor of candidates Richard Cline and Heyward Robinson, according to the reports.

The labor council has paid for four fliers that denounce incumbents Duboc and Winkler for supporting the privatization

of city services. Some of the fliers also endorse candidates Cline and Robinson.

Developer contributions

Candidates Boyle, Duboc and Winkler each took in another \$3,000 in donations since Oct. 30, according to late campaign finance reports.

The three candidates each received three donations of \$1,000 — one from the Redwood City-based DES Architects and Engineers, and another from the Palo Alto-based real estate company Menlo Business Park LLC, according to the reports.

The third listed donation is from Bernard Magnussen of Palo

Alto, the former president of the Magnussen Buick Pontiac GMC auto dealership.

The three candidates are running as a slate, and have now raised about \$87,500, combined, from Jan. 1 to the Almanac's press deadline on Nov. 6, according to the reports.

All six candidates also reported accepting a \$2,000 donation from developer David Bohannon. Mr. Bohannon's company, the David D. Bohannon Organization, reported Oct. 27 giving \$2,000 to each of the six candidate campaigns, and, according to the reports, none of the candidates turned down the offer.

Menlo Park on Track, a politi-

cal action committee that has campaigned in behalf of candidates Vincent Bressler, Cline and Robinson, received a contribution of \$1,050 from its own treasurer, former council candidate David Speer.

The group paid for a flier recently mailed to residents that says incumbents Duboc and Winkler "did nothing to save" the Park Theatre.

Candidate Robinson leads the other three candidates in monetary donations, with \$22,400, followed by Mr. Cline with \$13,885 and Mr. Bressler with \$10,919.

Mr. Bressler has also loaned another \$2,000 to his own campaign. ■

Check AlmanacNews.com for election night news

It may be a long night for San Mateo County residents planning to stay up until election results are in, but the Almanac will keep you company with updated stories and tallies at www.AlmanacNews.com.

Election officials predict that the final unofficial results — minus a count of provisional and absentee ballots dropped off at polling places on election day — won't be available until about 2 a.m.

The Almanac will post results for local races, beginning at about 8:05 election night, when the first wave of absentee ballots will be tallied, according to Carol Marks of the Elections Office.

At about 8:30 and 9 p.m., more absentee vote results will be available.

Starting at around 10:30 p.m., the county plans to release results that include precinct counts every hour, Ms. Marks said.

The verification and count of provisional and absentee ballots dropped off on elec-

tion day won't begin until Wednesday, she said.

Candidates and community members are expected to gather at the Menlo Park City Council chambers, where Cable Channel 27 will begin live election night coverage at 10 p.m. This can be seen in Menlo Park and Atherton.

Menlo Park council candidates plan to attend, say candidates John Boyle and Heyward Robinson. Mr. Boyle is running on a slate with incumbents Mickie Winkler and Lee Duboc; Mr. Robinson, Richard Cline and Vincent Bressler are trying to unseat the incumbents.

The cable station plans to stream its live coverage on the Internet at www.Community-MediaCenter.net.

County Elections Office postings can be found at www.shapethefuture.org.

■ ELECTION RETURNS

Visit www.AlmanacNews.com



A Boyle-Duboc-Winkler banner at a Menlo Avenue door in downtown Menlo Park, and candidate Heyward Robinson leaves fliers at a home on Valparaiso Avenue.



The Almanac/Marjan Sadoughi

Menlo Park candidates make last push

By Rory Brown
Almanac Staff Writer

■ ELECTION 2006

A flurry of last-minute fliers, e-mails and accusations reinforced the contentious tone of the Menlo Park City Council race as it entered its final hours.

A flier that hit residents' mailboxes Nov. 6 is the latest example of the fight between two camps for three seats on the five-member council.

The flier says the Service Employees International Union Local 715, which represents the city's non-safety employees, "is seeking an increase in pension benefits that will increase the cost to the city by over 50 percent."

The "incumbent slate" of Lee Duboc, Mickie Winkler and John Boyle (a newcomer backed by the

incumbents) paid for the flier.

Candidate Heyward Robinson labeled the flier "pretty questionable," as discussions of the city's labor negotiations occur "in closed session, not on campaign fliers."

Mr. Robinson and candidates Vincent Bressler and Richard Cline are running against the incumbent slate.

High school seniors help out at polls

By Stephanie Cadora
Special to the Almanac

If you want to get excited about the upcoming election, visit a high school during poll-worker training.

About 45 high school seniors

recently participated in a three-hour poll worker training session at Menlo-Atherton High School.

They are expected to be among some 500 high school seniors,

See **STUDENTS**, page 8

See **CAMPAIGN**, page 8



HOLIDAY SALE

In the spirit of the upcoming Holidays, Flegels is having a storewide Holiday Sale with savings of 10% - 40%. Most floor items are available for immediate delivery, so now is the time to find that perfect accent or furniture piece to create the ideal Holiday look!

Financing Available

Flegels

Fine Furniture & Interior Design

Menlo Park	870 Santa Cruz Ave.	650.326.9661
San Rafael	654 Second Street	415.454.0502
San Ramon	300 Market Place	925.806.0430

www.flegels.com



One from the heart

John and Susan Sobrato of Atherton were recently honored at Pathways Hospice Foundation's One From the Heart Awards breakfast at the Crowne Plaza Cabana in Palo Alto. The Sobratos received the John W. Gardner Visionary Award for their innovative philosophy toward philanthropy. Their daughter, Lisa Sobrato Sonsini, accepted the award on their behalf.

Plan unfolds for bulk buy of solar arrays in Portola Valley, Ladera

By David Boyce
Almanac Staff Writer

A group of Portola Valley and Ladera residents are collaborating with a solar-panel installer on a plan to increase the level of sun-generated electricity in these communities. The plan calls for acquiring solar electricity systems at a discount by buying in bulk.

Representatives of Foster City-based Solar City will fan out to visit each home in Portola Valley and Ladera, starting early this week, to engage in an "advertising, public relations and education" campaign on solar electricity fundamentals and to determine whether a solar panel would work out at a given home, said company president and chief executive officer Lyndon Rive.

The company needs to sign up 40 to 50 residents before the end of the year to make the plan work economically. Mr. Rive and other members of the Solar City team met with a residents' committee at the home of Councilman Ted Driscoll on Oct. 29 to talk about plans for the outreach campaign.

Mr. Driscoll recently had a solar electricity system installed on his roof. Portola Valley officials are enthusiastic about wider use of solar panels, but the town is not affiliated with this project and will have no role in choosing a vendor, Mr. Driscoll said.

The committee will choose a vendor, probably on Nov. 14. Vendors other than Solar City

■ INFORMATION

For more information on this program, send e-mail to edgy@sbcglobal.net.

are welcome to make offers, but none has responded so far, said Armand Neukermans, a committee member and one of the people behind the plan.

"It's sort of like planting a tree for generations to come," Mr. Neukermans said of the proposal. Commenting darkly on the need

'It's sort of like planting a tree for generations to come.'

ARMAND NEUKERMANS,
PORTOLA VALLEY RESIDENT

for clean energy in the face of global environmental troubles, Mr. Neukermans added: "We don't have 30 years. Our kids don't have 30 years."

Setting an example

The state's rebate for installing solar panel systems drops in January to \$2.40 per watt from \$2.60 per watt. To make the current plan work, Solar City — formerly the solar-panel business unit at Palo Alto Hardware — must install a total capacity of at least 175 kilowatts, Mr. Rive said in an interview.

"We're trying to set up an example so that, if this community can move over (to solar),

we'll get other communities to move over," Mr. Rive said. "If we succeed, I think this is going to be quite big ... in setting an example that communities can change if they come together."

A home with an \$85 monthly electricity bill would require a 3.5-kilowatt array, while a home with a \$1,000 bill would need 18 kilowatts, he said. Most homes have the necessary free space on the roof, he added.

The arrays would be sized to produce just enough electricity to meet a home's normal requirements, Mr. Rive said. There is no financial incentive in generating more than that because, while the excess is fed back to PG&E, residents receive nothing for it, he said.

If a roof is oriented away from the sun's path, the system can be set at a slight angle, or installed on the ground at an added charge, Mr. Rive said. For properties with deep shade from large trees, solar panels may be uneconomical, he added.

Residents who sign with Solar City would save about 30 percent on purchase and installation of the panels, Mr. Rive said. The deal includes handling of permits, rebates and PG&E connections. Solar City will also monitor the system's operation over the Internet, he said.

Plans for the new Town Center include up to 70 kilowatts of roof-mounted solar panels. The town could sign up with Solar City if a down payment could be made before the end of the year, said Councilman Ted Driscoll. ■

Wetland restoration tour Saturday

To get a feel for the largest wetland restoration project on the West Coast, you can sign up for a tour of the salt ponds adjacent to Menlo Park's

Bayfront Park, which are now being restored as part of the San Francisco Bay National Wildlife Refuge.

The next tour is on Saturday,

Nov. 11, from 11 a.m. to noon, starting at Bayfront Park, at the end of Marsh Road. Reservations are required for the free tour. Call the refuge at 510-792-0222. Or go to fws.gov/desfbay.

REAL ESTATE Q&A

by Gloria Darke



Washer and dryer or bust!

Q. We recently purchased a home and we included in our contract the washer and dryer along with the usual items. The house was tenant occupied and difficult to get into. However, we went to do our final walk-thru the day before we were to close and discovered that those appliances were not there. It turns out that they belonged to the tenants! We threatened not to close until this matter was resolved but our loan rate also expired the next day. How is something like this supposed to be handled?

Alice Hall, Palo Alto

A. Dear Alice Hall, Usually the personal property which is to be included in the purchase price is in the MLS information. You did not mention if you believed that it was part of the purchase or if you just added it in to your contract. However, even if it wasn't in the listing but was in the contract, the contract supercedes the listing and if the sellers agreed to that

without countering it out, then you have the right to the washer and dryer. But you don't have the right to the tenants washer and dryer, obviously.

Some research would need to be done to ascertain the age of the washer/dryer which you presumed were part of what you were purchasing. Try to determine what the value of appliances of that age and particular brand are and ask for a credit in that amount. Fortunately, most of the information you would need should be available on the internet rather than having to make a dozen phone calls. It is interesting to me that this could have happened; it just goes to show that in the heat of negotiating, usually on price, other items can be overlooked. In the total scheme of things, this is a relatively small item and I would not advise holding up the close for it. Just get an agreement in writing, close the escrow and enjoy your new home.

For answers to any questions you may have on real estate, you may e-mail me at gdarke@apr.com or call 462-1111, Alain Pinel Realtors. I also offer a free market analysis of your property..



Meet Katie.

Katie Seedman is a Private Banker at the Palo Alto office of Borel Private Bank. With over 27 years in the industry, she knows banking, and she knows her clients. A dedicated athlete, Katie has been playing soccer for as long as she's been in banking.

You can reach her directly at 650.463.8709 or katies@borel.com — ask her about how she can make banking easy for you, or about the time her bicycle kick found the net.

Banking — we take it personally.

Borel Private Bank & Trust Company

Borel Private Bank & Trust Company
Bingham, Osborn & Scarborough, LLC
Sand Hill Advisors, Inc.

Member BOSTON PRIVATE Wealth Management Group

245 Lytton Avenue, Palo Alto, CA 94301
650.463.8700 | www.borel.com

Offices in San Mateo, Palo Alto, San Francisco & Los Altos



Member FDIC

O'Brien Group spends big to fight referendum

By Andrea Gemmet
Almanac Staff Writer

The O'Brien Group, the Derry project developer, has raised a total of \$84,147 and spent \$41,728 to defeat a referendum against the project, according to the latest campaign finance statements.

Menlo Park Tomorrow, the group supporting the referendum, reported spending a quarter of that, \$9,883.

Both camps received all their financial support from single sources.

O'Brien Group

The O'Brien Group and its affiliates contributed \$60,000 in cash and \$24,147 in non-monetary contributions, for a total of \$84,147 given to the "Friends of Derry Lane, sponsored by The O'Brien Group" committee. The financial statement shows contributions and expenditures made through Sept. 30 of this year.

The O'Brien Group reported \$24,147 in non-monetary expenditures: \$20,000-worth of "voter communications," \$1,564 for an Almanac newspaper ad, and \$2,583 for services of one employee.

Cash expenditures include \$10,000 to Olson Consulting of Tulare, California, and \$7,500 to Pacific Petitions Inc. for petition

Derry developer may argue referendum signatures are invalid. **Page 10.**

circulating services.

Friends of the Derry Project reported having \$42,420 left in the bank.

Menlo Park Tomorrow

Menlo Park Tomorrow reported receiving a \$10,000 loan and an \$87 cash contribution from Menlo Park resident Morris Brown. The financial statement covers Sept. 1 through Sept. 30.

The group reported spending \$9,883, including \$4,500 for Chris Brentlinger's signature consulting services, \$2,552 for petition and envelope printing services from CopyAmerica, and \$1,464 for a newspaper ad in the Almanac. Menlo Park Tomorrow has \$4,642 left in its coffers, most of which is carried over from a previous campaign.

Signature verification

The San Mateo County Elections Office is still examining referendum petitions to see whether there are the 1,850 verified signatures required to proceed with the referendum on two ordinances: one rezoning the Derry site for the 134-condominium project and the other changing the zoning language for the property next door at 1300 El Camino Real. ■

STUDENTS

continued from page 5

and 2,000 other poll workers, staffing precincts in San Mateo County on Tuesday, Nov. 7.

In addition to M-A, local high schools involved include Woodside, Sacred Heart, Menlo School, Sequoia, Mid-Peninsula and East Palo Alto Academy.

The program to hire high school seniors (they are paid \$140 each) aims to staff the voting operations, and to promote participation in elections by young people.

Diane Martinelli, who teaches an American government class at M-A that many of these students are taking, says she is thrilled to teach kids about voting.

"This was a good opportunity to get involved and see how voting works," says Calvin Johnson, 18, of Menlo Park.

He is now eligible to vote, and says it's a big responsibility: "This marks my entrance into adulthood. Now I have to know what's going on."

During the poll worker training session at M-A, he teamed with another student to put together the new eSlate electronic voting booth. The students had the machines up

and running in no time flat.

"Our generation understands technology," says Lauren Verity, 17, of Menlo Park. "It was easy."

She and her friend, Melanie Takakai, 17, of East Palo Alto, will both be eligible to vote in March. They say they look forward to participating as poll workers in the Nov. 7 election.

While Lauren admits she's doing this for the \$140, she adds: "I think people who are 18 should vote. You can't complain about things if you don't vote."

One of the measures she's interested in is state Proposition 85, which would require a 48-hour waiting period and parental notification for minors seeking abortions. "I don't think parents should have to know," Lauren says.

Her friend Melanie disagrees: "Parents should always know what kids are doing."

This is an example of the civic engagement that Sarah Carrade, community program specialist and outreach worker with the elections office, likes to see.

"I'm passionate about getting students involved," she says. "Over 100 students are participating as poll workers from South County alone." ■

Creative Arts Day

Jill Leggett practices painting on silk, using a brush, wax and silk dye, at the silk scarf painting workshop offered by Joy-Lily during the recent Creative Arts Day at Allied Arts Guild in Menlo Park.

The Almanac/
Marjan Sadoughi



Incumbent slate endorsement causes stir

■ Parents protest co-president of school foundation endorsing candidates.

By Rory Brown
Almanac Staff Writer

■ ELECTION 2006

Like a lot of influential Menlo Park residents, Ted Schlein is supporting one of two political camps in the City Council election.

But Mr. Schlein is also board co-president of the Menlo Park-Atherton Education Foundation, and the use of his title in supporting candidates John Boyle, Lee Duboc and Mickie Winkler, has created a stir.

"Join me in voting for Boyle, Duboc and Winkler ... They have a plan to preserve and improve our community — without raising your taxes," says Mr. Schlein, on a flier paid for and mailed to residents by the three candidates' campaigns.

Mr. Schlein could not be reached for comment before the Almanac's deadline.

Although Mr. Schlein's endorsement may help the three candidates garner votes, parents are questioning why the

co-president of a nonprofit organization is using his title in supporting candidates in a contentious council race at the same time the foundation is looking for donations.

"[Mr. Schlein] using his name probably alienated some potential donors," said parent Dan Burke. "I think you have to question anyone that uses a volunteer organization for the political gain of others."

He also labeled the quote credited to Mr. Schlein on the flier "a little ridiculous and misleading," as there is a utility tax measure on the ballot.

Laura Rich, who is president of the school board and works regularly with the foundation board, said Mr. Schlein's endorsement of the candidates is within his rights.

"It's made clear on the flier that it's [Mr. Schlein's] personal opinion," said Ms. Rich. "[Mr.

Schlein] broke no rules, he ran it by people ... it's not a foundation endorsement in any way."

She acknowledged that the flier did make some parents "uncomfortable," and the foundation board plans to discuss, and potentially reconsider, its guidelines concerning political endorsements at its next meeting.

She said that parents who choose not to donate to the foundation because of the flier are "adding to the polarization" and "hurting the children."

The foundation is scheduled to hold its first "donation day" of the 2006-07 school year on election day. Drop boxes will be at local schools supported by the foundation, in hopes that when people go to school grounds to vote, they will also give to the foundation, Ms. Rich said.

Maria Hilton, the other co-president of the foundation, is listed as a supporter of the incumbent slate on campaign literature paid for by the candidates, but her role with the foundation is not listed.

John Boyle is also a member of the foundation board. ■

CAMPAIGN

continued from page 5

Mary Gilles, who is working to get the incumbent slate re-elected, said the flier is intended as a "rebuttal" to "previous union attacks" on candidates Duboc and Winkler.

Last push

The six candidates and their supporters campaigned throughout the weekend, and both sides expressed cautious optimism.

"It's been a pretty aggressive campaign by everybody," said Mr. Boyle. "Going door to door and talking to people, I feel good

about our chances."

On the other side, Mr. Robinson said: "The campaigning has been pretty tiring, but I think it's really paid off. We've gotten a good response, and I like where we sit."

Although campaigning intensified in recent days, Mr. Boyle and Mr. Robinson noted that a lot of votes have already been cast.

"A lot of votes are already in and done, because of the high percentage of absentee ballots," said Mr. Robinson, when campaigning on San Mateo Drive on Saturday. "But any small interaction with voters can translate into a big difference in a close election."

Recycle day at Acterra

The Environmental Volunteers invite one and all to drop off unused or unwanted electronics free on Thursday, Nov. 9, from 9 a.m. to noon, at the parking lot at Acterra, 3921 E. Bayshore Road in Palo Alto.

Items, working or not, can include computers, scanners, copiers, stereos, cable, game systems, test equipment, battery chargers, cartridges, and more. For information, call Sue Trautman at 961-0545 or go to evols.org.

Portola Valley, Woodside may get \$2 million from county

■ San Mateo County offers the money to settle a property tax dispute.

By David Boyce

Almanac Staff Writer

Large checks from the San Mateo County treasury will be forthcoming to four towns — including Portola Valley and Woodside — if their respective Town Councils agree to settle a year-long dispute with the county over property tax revenues the towns say they are owed.

Portola Valley would receive about \$900,000 and Woodside \$1.2 million, with Half Moon Bay and Colma also receiving checks.

The Portola Valley Town Council is scheduled to vote on the settlement at its 8 p.m. meeting on Wednesday, Nov. 8, in the Historic Schoolhouse.

The negotiation with the county “was not a very contentious process,” Portola Valley Town Administrator Angela Howard said. “The strong thing we had going for us is that we realized early on that it was more to our advantage to work together (with the other towns).”

In Woodside, the Town Council will study the matter in closed session on Nov. 14, said Town Manager Susan George, adding that she couldn't discuss its details until the council had considered it.

“I'm hopeful that an agreement with the county will be reached very soon,” she said.

Late payments

The possibility of a settlement, with the prospect of large

checks in the mail, is an echo of last November. The County Controller's Office sent Portola Valley and Woodside checks for about the same amount in a late acknowledgment — 17 years late — of a 1988 state law that guaranteed the towns a 7 percent share of property tax revenues from their jurisdictions.

For years, Portola Valley has

‘The strong thing we had going for us is that we realized early on that it was more to our advantage to work together (with the other towns).’

ANGELA HOWARD, TOWN ADMINISTRATOR, PORTOLA VALLEY

received 4 percent of its property tax revenues and Woodside about 5.7 percent.

Last year's checks from the county covered revenues owed the towns for the 2003-04 and 2004-05 budget years. But with 15 years of payments unaccounted for, the town attorneys argued that the county owed more.

The county replied that they owed nothing because state law protected old records from review if they had passed an

audit. However, the towns discovered that at least two previous audits “had not been resolved,” said Portola Valley Town Attorney Sandy Sloan in a memo to the Town Council.

The four towns began negotiations by asking for four years of back payments, from 1999-00 to 2002-03, said Ms. Howard. “I truly believe that if we said we wanted anything more, we'd have ended up in court,” she said. “We felt comfortable that that was a reasonable amount to expect.”

The talks produced a compromise. The county would pay for the budget years 2001-02 and 2002-03, plus about \$100,000 that had been deducted from the earlier payments, Ms. Howard said.

In keeping with the 1988 law, the towns will receive annual payments boosting their property tax revenues to the 7 percent target. For Portola Valley, that's an increase of about \$400,000 a year on typical yearly revenues of \$5 million.

The towns also wanted a 7 percent interest rate on the money owed them, but settled for what the county earns on its investments, about 4 percent, Ms. Howard said.

The four towns are sharing the costs for the outside attorney hired for the negotiations, but the “insignificant” fee didn't even reach the cap of \$17,000 for all four towns, Ms. Howard said. ■

— Almanac reporter Andrea Gemmet contributed to this story.

Menlo man sentenced to four years in prison

By Alexandria Rocha

Palo Alto Weekly

Former Jordan Middle School teacher and coach Bill Giordano, a resident of Menlo Park, was sentenced to four years in prison Nov. 3 for having sexual relations with a young girl from 1991 to 1994.

“You've betrayed many people and took advantage of a position of trust and leadership,” San Mateo County Superior Court Judge James Ellis told Giordano when he announced the sentence in the Redwood City courtroom.

Mr. Giordano had entered a no contest plea to 10 counts of child molestation as part of a plea bargain that provided a maximum sentence of five years in prison.

Mr. Giordano was arrested at his Menlo Park home on Aug. 18, 2005, on charges of having

sexual relations with an underage girl starting when she was 14 in late 1991.

The victim, now in her late 20s and living in Pennsylvania, said her sexual encounters with Mr. Giordano began in December 1991 after he hired her to babysit his son, according to Steve Wagstaffe, San Mateo County deputy district attorney.

“I'm deeply sorry,” Mr. Giordano told the judge Nov. 3. “There's no question that what I did was wrong. I'm deeply sorry.

I wish I had been stronger at the time.

“I'm affected by it every hour and every day — I'm not making that up,” he said.

A psychological profile of Mr. Giordano by Dr. David Berke of San Mateo concluded that Mr. Giordano has “predatory and pedophilic” type behavior.

Mr. Giordano joined the Palo Unified School District as a teacher in 1978, and became a teacher at Jordan Middle School in 1991. ■

YOUR SOURCE FOR
LOCAL INFORMATION

The Almanac

www.AlmanacNews.com



International School of the Peninsula

(650) 251-8504 • www.istp.org
Palo Alto, CA



You promised to
give them the
world.

Now you can.

Nursery - 8th Grade
Bilingual Immersion School
French-English or Chinese-English

Chinese-English Information Night
November 16 at 7 P.M. French-English Information Night
November 9 at 7 P.M.

The Tree is up!
Shop, eat, get into the holiday spirit!
Best selection of beautiful ornaments

The Traditional Shop

Monday thru Saturday • 10:00AM - 5:00PM

All Nov thru Dec 17
Sunday • NOON - 5:00PM



Allied Arts Guild
75 Arbor Road (at Cambridge)

Menlo Park

650.325.3259

www.alliedartsguild.org

Benefiting Lucile Salter Packard Children's Hospital at Stanford

Titus pleads guilty to fraud

Vivian Michelle Titus of Woodside, a former banking executive charged with bank fraud and embezzlement of \$700,000, has pleaded guilty to one count of bank fraud.

Ms. Titus, 43 at the time of her arrest last June, is scheduled to be sentenced Feb. 20, 2007, in U.S. District Court in San Jose.

She could be sentenced to a maximum of 30 years in prison, be fined \$1 million, and ordered to pay restitution, said Luke Macaulay, a Department of Justice spokesman. She remains free on bail.

In exchange for the guilty plea, entered Oct. 5, federal prosecutors agreed to drop two counts of bank fraud and three

counts of embezzlement.

She was a senior vice president at Mid-Peninsula Bank from 1996 to 2003, and a managing director at First Republic Bank in 2003 and 2004.

Ms. Titus is accused of forging bank customers' signatures to arrange two \$250,000 lines of credit and to withdraw a 200,000 cashier's check from another customer's account. She allegedly used the money for a down payment on an Atherton home, loan payments and personal use.

To hide account statements from a customer whose name she used, Ms. Titus arranged for bank statements to be sent to a post office box in Redwood City, the indictment says.

Challenge to Derry referendum?

■ Developer may argue referendum signatures are invalid, said city attorney.

By **Rory Brown**

Almanac Staff Writer

In an effort to halt a referendum campaign against the Menlo Park "Derry" commercial project, the developer behind the project may challenge the validity of the signature drive.

Representatives from the San Mateo-based O'Brien Group have yet to file a written challenge to the city, but City Attorney Bill McClure said the company has "raised legal questions" regarding the referendum. He said he expects some kind of written challenge to be submitted to the city.

Jim Pollart, vice president and spokesperson for the O'Brien Group, would not

comment on a potential challenge of the referendum.

The San Mateo County Elections Office is examining referendum petitions to see whether there are the 1,850 verified signatures required to proceed with the referendum on two ordinances: one rezoning the Derry site for the 134-condominium project and the other changing the zoning language for the property next door at 1300 El Camino Real.

The referendum was spearheaded by the residents' group Menlo Park Tomorrow. Group spokesperson Morris Brown said the group has more than 2,400 signatures.

If there are enough verified signatures, the council must rescind

■ MENLO PARK

the two ordinances, including the approval of the project, or refer the ordinances to the voters in an election. A final count is expected to be finished by the county and announced by the city no later than Nov. 27.

Two challenges

In conversations with the city, the O'Brien Group has discussed two potential challenges to the referendum drive, Mr. McClure said.

One claim is that the referendum proponents did not include a specific notice that state elections code requires to be included on the referendum petitions, Mr. McClure said.

The other claim focuses on the land use designation for the proposed project site — a 3.4-acre property near the intersection of El Camino Real and Oak Grove Avenue.

The referendum focused solely on challenging changes to the city's zoning to allow high-density residential projects on the proposed site, and a partial zoning of the neighboring site at 1300 El Camino Real. The O'Brien group has suggested that because the general plan amendment was not challenged in the referendum, any changes to the zoning would not be consistent with the general plan, Mr. McClure said.

Mr. Brown said the residents' group has hired a lawyer to look into the potential challenges discussed by the O'Brien Group, but he is isn't concerned.

"Both of these issues are pretty technical, but we're prepared for this — these are the kinds of things that happen when you do a referendum," he said. "We feel very confident that [our attorney] knows what he's doing, and we know what we're doing." ■

Tickets
On Sale Now!

One of America's Greatest Treasures

FILOLI

HOLIDAY TRADITIONS: GIFTS FROM THE WINTER GARDEN

Honoring the Beauty and Tradition of the Glass Conservatory

Friday, November 24th THROUGH
Saturday, December 2nd

- Premiere Access Shopping Evening
- Evening Dinner Parties
- Daytime & Evening Holiday Shopping Boutiques
- Brunch Buffets
- Dinner in the Café
- Children's Parties

For pricing and additional information, please visit Filoli's website: www.filoli.org

86 Cañada Road, Woodside, CA 94062 650-364-8300 x508



You're invited!

Pioneer

PURE VISION TOUR

SOUND PERFECTION invites you to join us as one of the few Pioneer Elite Dealers in the country to host an Annual Pioneer PureVision Tour. Our customers will be able to purchase some of the newest state-of-the-art Pioneer Elite products including the new **Pioneer Elite 1080p**. See a preview of the new **Blu-ray Disc Player**. Pioneer representatives will be on-site for demonstrations and advice.

THREE DAYS ONLY!

Friday, Saturday & Sunday - November 10-12th

Get 10% OFF

ALL PIONEER ELITE PRODUCTS

Mention this ad for a chance to

WIN a FREE Pioneer DVR recorder

and other great prizes!

Pioneer *sound.vision.soul*



Pioneer PureVision Tour

Sound Perfection: 700 El Camino Real, Menlo Park, CA 94025 • 650-323-1000 • www.soundperfection.com

Urban forest in Menlo Park is green but growing fragile

■ Culling of older trees called necessary to ensure a healthy canopy in the future.

By David Boyce
Almanac Staff Writer

Menlo Park loves trees. They're on logos for the city, the school district and the police department. The Chamber of Commerce uses an acorn in its logo. For 10 years, the National Arbor Day Foundation has named Menlo Park an official tree city. On neighborhood streets, once youthful trees have grown to create a sheltering green canopy.

And therein lies a problem, said Dianne Dryer, the environmental programs coordinator for the city of Menlo Park. Many of the 20,000 deciduous street trees — those located in public right-of-way — were planted in the 1950s as part of new subdivisions. As they advance into their 50s and 60s together, these trees are growing vulnerable and present a safety issue over the next five to 10 years, she said.

Older trees can appear healthy, and be healthy, while also losing limbs, said Barrie D. Coate, a consulting arborist to the city of Menlo Park, during a neighborhood walk on Saturday, Nov. 4. The city should be culling a few trees at a time to avoid bare spots in the canopy if several trees on the same street become a threat

to public safety, he said.

The city has had a program in place for decades, but limited funding has reduced culling to trees considered imminent dangers, Ms. Dryer said. With 4,300 trees on the city's watch list, about \$2.8 million — \$650 per tree — will be needed to cut down and replace them.

To prepare a report for the City Council for next year's budget, a pilot project is under way to evaluate trees, talk to the public, replace trees as necessary, and work out a long-term gradual reforestation plan for Menlo Park's urban forest. "Looking down the street, you shouldn't be able to see any change if it's properly done," Mr. Coate told the Almanac.

The pilot project includes some 156 homes and 370 street trees in an area north of Santa Cruz Avenue on parts of Cotton and Hobart streets, Hillview, Hesketh and Politzer drives and Valparaiso Avenue.

Of the 370 trees, about 30 are scheduled to be cut down between Nov. 20 and the end of the year. A homeowner can take a tree off the list by calling or e-mailing Ms. Dryer before Thursday, Nov. 9, but the city reserves the right to remove it if



The Almanac/David Boyce

Big deciduous trees in Menlo Park's urban forest are in trouble, said consulting arborist Barrie D. Coate at an outdoor community meeting on Saturday morning, Nov. 4. The city may begin to systematically cut down and replace aging trees.

it is judged dangerous, she said.

Taking an old tree down "is hard for people to swallow," Ms. Dryer said. "I know the emotion because I love trees. But I also know that if we don't do something to replace these trees, Menlo Park will not look as lovely in 20 years. That's the sad reality."

Some Menlo Park trees are not meant for this climate, Mr. Coate

See TREES, page 17

Tree culling plan draws support, criticism

Residents in a West Menlo Park neighborhood had mixed reactions to the city's pilot project to replace certain aging deciduous street trees with younger varieties considered less likely to drop limbs and more suitable to the local climate.

Culling is set to begin Nov. 20. Dianne Dryer, Menlo Park's environmental programs coordinator, said her office has heard equal measures of support and criticism from residents.

She described the plan in an Oct. 19 letter that invited residents to a Saturday, Nov. 4, "tree walk" with an arborist along streets north of Santa Cruz Avenue. About 50 residents showed up.

"We want to understand why you picked our tree (to come down), because our tree looks perfect," said one man.

"We have unity here," said a woman, referring to the parade of liquidambar trees lining both sides of Cotton Street. "It's going to be higgledy-piggledy. It's not going to be the same."

Russ Hall argued that the City Council had agreed to allow Hillview Drive residents to maintain the street's colony of mature Modesto Ash trees. In

an interview, he said residents were "willing to live with" the possibility that their street could be denuded of its canopy if the ash trees had to be removed en masse.

(Ms. Dryer said Monday, Nov. 6, that the city may give Hillview Drive residents more time to review their options with the arborist. A resident has also appealed tree culling on Cotton Street, which could delay action until next fall,

when replanting is optimal.)

Other residents supported the plan. "The people on these streets are getting the benefit of decisions made 30 or 40 years ago," said John Fox of Elder Street. "You've got to think about people who are going to be here in 40 years."

Al Odian of Cotton Street said he expects the culled trees will be replaced with "decent trees."

— By David Boyce

"Don't settle for Imitations!"

Custom hardwood cabinets made by such types of wood as Alder Pine, Cherry, Maple, and Walnut can be manufactured for any room in your home.

Custom wood work and furniture include, but not limited to:

- Kitchen cabinets • Bathroom vanities
- Entertainment centers • Fireplace mantels
- Built-in dressers • Book cases



1725 E. Bayshore Road
Redwood City, CA 94063
650.364.3376
www.stergionconstruction.com

IN HER SHOES

All profits to benefit
Global Fund for Women

FREE
PEDICURE

Month of November
Please call for appointment

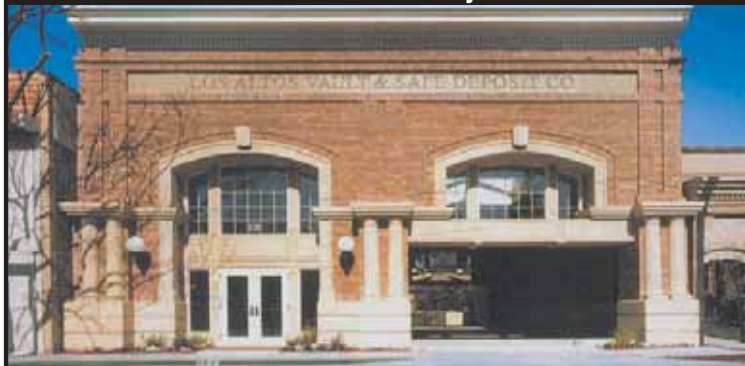


650-326-9611 • Fax 650-326-9616

644 Emerson St., Suite 100, Palo Alto

www.inhershoespa.com • inhershoespaloalto@yahoo.com

IF IT'S NOT IN THIS VAULT, IT'S NOT SAFE.



LOS ALTOS VAULT & SAFE DEPOSIT CO.

A private depository
Safe deposit boxes of all sizes
Strict and total confidentiality
Secured and ample parking
For your own sake we should have your business.
Visit our facilities and judge for yourself.
Data bank for important and confidential records.



121 First Street, Los Altos, CA 94022
Tel: 650-949-5891 www.losaltosvault.com

THANK YOU!

MENLO-ATHERTON'S FOUNDATION FOR THE FUTURE GRATEFULLY ACKNOWLEDGES THE FOLLOWING GENEROUS DONORS WHO JOINED US LAST YEAR TO SUPPORT EXCELLENCE IN EDUCATION AT MENLO-ATHERTON HIGH SCHOOL. GIFTS WERE RECEIVED FROM SEPTEMBER 1, 2005 TO AUGUST 31, 2006.

VISIONARY

Anonymous
Gary & Judy Bloom
Fidelity Charitable Gift Fund



WESTLY FOUNDATION

BENEFACTOR

Anonymous
Philip Arcuni & Carin Pacifico
The Conway Family Foundation
Margaret Costello
Tom DeFilippis & Ann Baskins
Bert & Linda Fornaciari
John & Michele McNellis
Peninsula Community Foundation
Portola Group Foundation
Jozef Ruck & Donna Ito
Bill & Lauren Younger

PATRON

Anonymous
Mary Helen Armstrong
Jim Bassett & Lily Hurlimann
Steve & Darline Bellumori
Dawn Yates Black
Jeff & Julie Brody
Jeff & Dianne Child
Jorge del Calvo & Gerine Ongkeko
Doug Collom & Marla Stark
Sanford & Susan Fitch
Fowley Light Fund
Goldman Sachs
Norm & Jane Hall
Bill Kirsch & Elyse Dunnahoo
Jim & Cathy Koshland
Daniel Leemon & Julie Dorsey
Hy Murveit & Leslie Airoala-Murveit
Armand & Eliane Neukermans
Jerry & Katy Peck
SF Foundation
Roger & Elizabeth Sippl
Dwight & Joy Somersett
Brad Sylvester & Kathy Jackson
Fred Wiener & JoAnn Kukulus

LEADER

Anonymous
Phil Abrahamson & Dana Shelley
Drew Altman & Pam Koch
Charles Bacon & Cynthia Dusel-Bacon
Robert & Edie Barry
Greg & Alison Blank
The Bohannon Foundation
John & Nancy Brandon
Vincent Bressler & JoAnne Goldberg
Clay & Denise Bullwinkel
Gerald & Marjorie Burnett
Preston & Carolyn Butcher
Bruce Cabral & Kim Harney
Howard & Kerry Dallmar
Jerry & Judi Finch
Frank & Jeanne Fischer
Leigh Flesher
Art & Cindy Folker
Greg Fountain & Annette Chavez
Susan Gold
Mike & Pam Gullard
John & Laura Hale
Russ & Debbie Hall
The Henry J. Kaiser Family Foundation
The Holland Family
Rich & Dianne Jensen
Scott Kaspick & Susan Termohlen
Diane & Patrick Kelvie
Barry & Bronwyn Lewis
Melvyn Mark
Ken & Sheila McDonnell
Kevin & Kim Menninger
Randy & Julie Merk
Mark Merrill & Peggy Lynch
Marshall & Susan Mohr
Luther & Carol Orton
Gary & Anne Peck
Jeff & Janna Rodgers
Allen & Pam Rudolph
Edward & Darlene Solomon
Fred Stanske & Cindy Newton
Greg & Linda Stroud
Barry & Libby Taylor
Emil & Patty Wang
Gerry & Virginia Weiss
Wells Fargo Community Support Campaign
Wells Fargo Foundation Educational Matching Gift Program

ASSOCIATE

Anonymous
Carlos & Nancy Aguilar
Douglas & Loretta Allred
Joe & Suzanne Amato
Marion Avery
Dale & Andrea Bastian
Doug & Laurie Bauer
The Birkhofer Family
Steve & Cathy Bitler
Elias Blawie & Pam Stoner
Dave & Cherie Bogart
Michael & Sheila Brand
Bruce & Suzanne Brownstein
Henry & Terri Bullock
Al & Susan Camarillo
Sloane & Judy Citron
Mel & Margaret Connet
Alan & Sue Cooper
Rob & Jane Creighton
Joan Dove
Bruce & Elizabeth Dunlevie
eBay Foundation
Hollis Elliott & Debbie Devoto
David Fair & Vickie Grove
Craig & Sally Falkenhagen
Doug Farel & Sheila Riley
Mike Fero & Katy Basile
Alexander & Deborah Fitz
The Flora Family Foundation
Bob & Diane Frankle
Dale & Jennifer Fuller
Mel Gallen & Sue Young
Kristin & Eric Gananian
Tom & Julie Gaston
Michael Hannan & Susan Olzak
Michael Hardy & Joanne Blum
Tom & Judy Hood
Joe & Jody Horowitz
Ken & Karen Imatani
John Kadvany & Susan Gillman
Tom Kane & Diann Lewis
James & Marilyn Lattin
Gary & Laura Lauder
Merijane Lee
The Mayerson Family
Tom & Patti McCabe
David & Jennifer McMullin
Jay & Kim Mitchell
John & Linda Montgomery
Montgomery Law Group, LLP
John Moragne & Kim Young
Denis & Jennifer Morrissey
Jim & Geri Nicholas

Keri Nicholas
Jim & Stephanie Nisbet
Brad & Judy O'Brien
John & Teri O'Neel
Clint & Jackye Ostrander
John Peters & Lenora Yuen
Steve & Carol Peters
Gary & Anne Peterson
The PG & E Corporation Foundation
Jeff & Mary Pickard
The Polash Family
Ed & Chris Rivera
Doug & Kate Rundle
Steve & Nancy Russell
Randy & Terry Ryals
Steve & Meritt Sawyer
Albert Scherm & Susan Tang
Ted & Linda Schlein
Peter Schwab & Ellen Feigenbaum
Schwab Fund for Charitable Giving
Greg & Nancy Serrurier
Elton & Katharine Sherwin
Sam & Lorie Sinnott
Jeff & Kayla Skidmore
Lyle Smith
Sam So & Margaret Tao
Joe & Laura Sorenson
Jeff & Linda Starr
Greg & Nancy Sterling
Jim Tetrud & Karen Butterfield-Tetrud
The Sigmund Foundation
Don & Sharon Traeger
Rick Van Rheenen & Eileen Moran
Terry & Susan VerHaar
Jane Walker
Tom & Linda Walsh
Steven & Denise Watanabe
Van & Karen Weiss
Rick & Rebecca Wilson
Sam & Kathy Wright

INVESTOR

Anonymous
Curtis & Maryvonne Abbott
Adobe Matching Gifts Program
David & Marty Arscott
Phil & Tiger Bachler
Dave & Laurie Bailard
David & Karen Bliss
John & Dagny Borcich

Peter Brown & Angela Sherry
Jim & Daryl Camarillo
Noreen & Jim Carruthers
Jicky Child
Patrick Chow & Patsy Obayashi
Tom Cooper & Mary Hom
Craig & Ann Cornelius
Burt & Elaine Cummings
Franz Joseph & Maria Decker
Bob & Lee Duboc
Kenneth & Jennifer Duda
Richard & Patrice Eberli
Robert English & Anna Zara
Lynn & Bill Evans
Federated Department Stores Foundation
Doug Felt & Lillian Lee
Cliff & Sarah Fitzgerald
Mike & Gretchen Flanagan
Frank & Stacy Fredericksen
David & Meg Fried
Hal & Hilda Friedman
Eric & Barbara Gilbertson
Jeff Gould & Lynne Thieme
Brian & Lea Greenberg
Greg & Patricia Gump
Tahir Hasoon & Hedefessaid
Alec & Mary Henderson
Jerry & Diane Hester
John Higham & Carol Bunker
Daniel & Alice Hom
Intel Foundation
Matt & Donna James
Todd & Lil Johnson
David Jones & Ann Yvonne Walker
Hideto Kaneshima
Brian & Katie Keating
John & Lanette Kozlowski
Zafer & Ferah Kutlu
Bryan & Susan Lovegren
Alan & Cindy Marty
Peter Mazonson & Mary Ann Zetes
Richard & Marjorie McCracken
Michael & Marybeth McLaughlin
Patrick & Pat McVeigh
Michael & Anne Mellenthin
Microsoft Giving Campaign
Doug & Beth Mohr
Alison Moonie
Steve & Vivian Nahmias
Bruce & Anita Ochieano
Craig & Lori Pica
Bruce & Sue Pound

Michael Price & Deborah Abel
Jed & Pam Riddle
Dennis & Diana Romley
Richard Ruby & Catherine Habiger
Alie & Glenda Saad
Brad Snedecor & Mary O'Shaughnessy
Kim Sommer
Peter & Susan Sorlie
John M. Stacey
Timothy & Katerina Steck
Doug & Kathy Stevens
Jim & Maureen Swartz
Michael Tennefoss & Tina Seelig
Eliot & Cris Terborgh
Allan & Terry Thygesen
Vanguard Charitable Endowment Program
Rob & Debbie Verity
Jeff & Gwyn Wachtel
Philip & Margaret Winters

SPONSOR

Anonymous
Richard & Lisa Abramson
Matt & Kathy Avery
Karen Axelsson
Steve & Ann Banich
Robert & Ildiko Barker
Tim & Patty Burch
Hollis & Anne Call
Barry & Lynne Calvarese
James & Lynne Charley
David & Nancy Christie
David & Wendy Chute
Craig Crowley & Beth Chappell
Stuart & Sharon Dalton
Rob Decker, PhD & Associates
Scott & Lisa Dettmer
Andrew & Karola Epstein
Jim & Maria Flaherty
Eric Fronberg & Tania Simirenko
Dave & Sally Fundakowski
Global Impact
Jim & Nicole Healy
Joe & Cathleen Hedges
Virginia Holmes
Lee & Cynthia Ivy
Douglas & Susan Jacobs
Jim & Kathy Janz

John & Jacque Jarve
Alan & Alexandra Kalin
David & Maggie King
Mike & Linda Klein
Ted & Laurie Knapp
Al & Sally Knorp
Eric & Polly Lai
Mark Linton & Susan Ellis
Randy & Kathy Lipps
Linda Maki
Walter Martin & Kathy Walkup
Pierre & Catherine Martineau
Bill & Synda Matthews
Kevin & Mary McCurdy
David McNellis & Erica Richter
David & Dolores McQuilkin
Edward Mocarski & Christine Martens
Mike & Jennifer Moore
Robert & Yoshiye Moriarty
Kristina Granlund Moyer
George Murphy
Roger & Yumiko Myoraku
John & Nancy Ortberg
Rod Perkins & Marcia Makino
Miguel Pinilla & Pamela Leffler
James Pooley & Laura Jean Anderson
Nicolas & Laurence Popp
Sohrab & Mastaneh Rahimzadeh
Wes & Suzanne Ramirez
Annamaria Rapakko
Galen Rosenberg & Denise Barnett
Tim & Perryn Rowland
Steve & Mary Rudolph
John & Kitti Salera
Jonathan Seder
Rick & Debbie Sklarin
Vern & Karen Stevenson
Tegger Sun
Pat Swift
Michael Taylor & Kristy Roos-Taylor
Casey & Sandra Terribilini
Wayne Townsend-Merino
Richard & Ellie Trautman
Dennis & Terry Tsu
Tyco Matching Gifts Program
Richard & Cyndi Vujovich
John & Mary Wachtel

Griff & Lynne Weber
Leland Wilson
John & Zaza Wu

FRIEND

Anonymous
Russ Altman & Jeanne Merino
Ron & Susan Beltramo
Bob & Barbara Berkowitz
Robert & Marida Berlin
Bob & Audre Bley
Mark & Robin Bogott
The Bohannon Family
Ben & Gail Brian
Dewan & Ushar Chand
Billy Chow & Aimee Yan
Tom Coates & Kris Bobier
Miles & Pat Congress
Kim Cooper
Mike & Lee Crager
Kristen Davis
Duane & Susanne Delagnes
Ken & Chris Doniger
Chris & Marybeth Dorst
Juris Dumpis & Daria Finstad
Ed Forman & Jan Swanberg
Anders & Kazuko Frisk
Mark & Debbie Gerow
Mike & Lissa Goldenstein
Philip & Deborah Hage
Elizabeth Halaby
George & Elyce Haskell
David Hauk & Patti Fry
Arthur & Helen Hausman
Brian & Marty Higgins
Tom & Marian Hill
Lois Hosay
Jeff & Laura Hum
Colin & Carrie Jenkins
Don & Pam Johnson
Ken & Juri Kameda
Tom Kilduff & Deb Bolding
Frank & Viola Kung
Larry & Gale Lane
Sione & Meleana Langi
Lloyd & Ellen Leanse
Robert & Louise Lee
James & Sandy Lees
Laurel Leone
Jerry & Patty Leugers

Katherine Linnemann
M-A PTA
Lawrence & Kathleen Masket
Brett & Robin McDonald
Bob & Angela McIntire
Heidi McRae
Diana & Mark Ongko
Jim & Leslie Peck
The PG & E Corporation
Campaign for the Community
Peter & Patti Randall
Blair Ratcliff & Ruth Cronkite
Sally Rayn
Walt & Judy Robinson
Hal & Denise Schectman
Joe & Sue Scheid
Roger & Naomi Stoller
Rick & Lynne Vieth
Craig & Stacia Weisenfluh
Stephen Westfold
Joan Westley
Robert & Felisa Zuk

SUPPORTER

Anonymous
Alfredo Alberto
Richard Alter & Merry Gilmer
Ignacio Amaral & Maria Valadez
John & Melanie Chladek
Eric & Emilia Darko
Terry & Judy Doyle
Razieh Duchin
Don & Joan Fabiano
Scott Feiler & Janet Galan
Gregorio & Rosario Flores
Mark Fowle & Kristen Olson
Claude Godcharles

Ignacio & Uriel Hernandez
Laura Herrera de Garcia
Helen Ingwersen
Patty Kelley
Yolanda Lemus-Page
Lydia Li
Charlene Margot
John & Pauline Mergenthaler
George & Cathy Michaels
Mr. Roger Toguchi
Collin & Carol Park
Jason & Hildegard Pressesky
Tom & Linda Sako
Aileen Sasaki
James Steck & Sandy Dutro
Margie Tully
Doss & Annette Welsh
David Wright

IN MEMORIUM

Robby Babcock

IN KIND DONATIONS

AplinUnoCreative
John Giambruno
Marian Hill
Clint McClintock
Mark Setzen
Roger & Betty Toguchi

We apologize to anyone whose name has been inaccurately listed or inadvertently omitted. Please feel free to contact us at cfolker@seq.org with any corrections.

FOUNDATION FOR THE FUTURE

MENLO-ATHERTON HIGH SCHOOL

Supporting Excellence in Education



Our 2006-2007 direct donation campaign is now underway!

WILL YOU JOIN US THIS YEAR IN SUPPORTING EXCELLENCE IN EDUCATION AT M-A?

Yes! I want to help! Enclosed is my donation for \$ _____ to help the Foundation for the Future support vital programs at M-A.

Name _____ Phone _____ Email _____

Address _____

_____ Do not list my name in Foundation communications.

Gifts of securities and matching gifts also gratefully accepted.

Please make tax-deductible donation checks out to Foundation for the Future, M-A and mail to:

Foundation for the Future
Menlo-Atherton High School
P.O. Box 1228
Menlo Park, CA 94026

For more information on the Foundation and the different ways to make your donation, visit our website at www.m-afoundation.org or contact:

Cindy Folker
Director of Development, Foundation for the Future
Tel: (650) 322-5311, Ext. 5206
Email: cfolker@seq.org



Members of **Woodside's new town government** gather around the phone in 1956 to hear the county clerk's announcement that Woodside is officially a town. From left, they are Councilman Selah Chamberlain, town clerk Jane Hicks, Mayor William Lowe, and Councilwoman Rose O'Neill. The first Town Council meeting got under way a few minutes later.

the big 5-0

COUNTRY “Rustic little Woodside,

the deep Peninsula community that voted to become citified so that it could remain countrified, officially became the Town of Woodside at 10:03 a.m. yesterday.

“At that moment, in the flower bedecked garage of the Woodside Fire Department, the telephone rang.

“Miss Jane Hicks, a pretty, gray-haired woman who later became the temporary town clerk, smiled jubilantly as the County Clerk's office informed her that the Town of Woodside had been born.”

Reporter Tim Adams of the San Francisco Examiner opened his story on the nascent town's first council meeting with those words on November 17, 1956.

As the town of Woodside reaches the half-century mark next week, one might well say that the more things change, the more they stay the same.

The concerns that galvanized residents to incorporate as a town and gain a measure of control over Woodside's destiny are still among the issues that concern Woodsiders today:

Maintaining its distinct, rural atmosphere amid the pressures of development and population growth. Keeping the country feel by resisting the urge to install sidewalks, streetlights or — heaven forbid — a stoplight at the intersection of Woodside and Canada roads. Preserving the horse trails, dealing with sewer problems, and regulating truck traffic.

In fact, at its very first meeting, the Woodside Town Council fielded a request from the Greensburg School to widen a walking path used by students on the south side of Woodside Road between the school and Canada Road. The council fielded a similar request from the Woodside Elementary School District (formerly known as Greensburg) earlier this year.

Prior to Nov. 16, 1956, Woodside existed as an

unincorporated area under the jurisdiction of the San Mateo County Board of Supervisors.

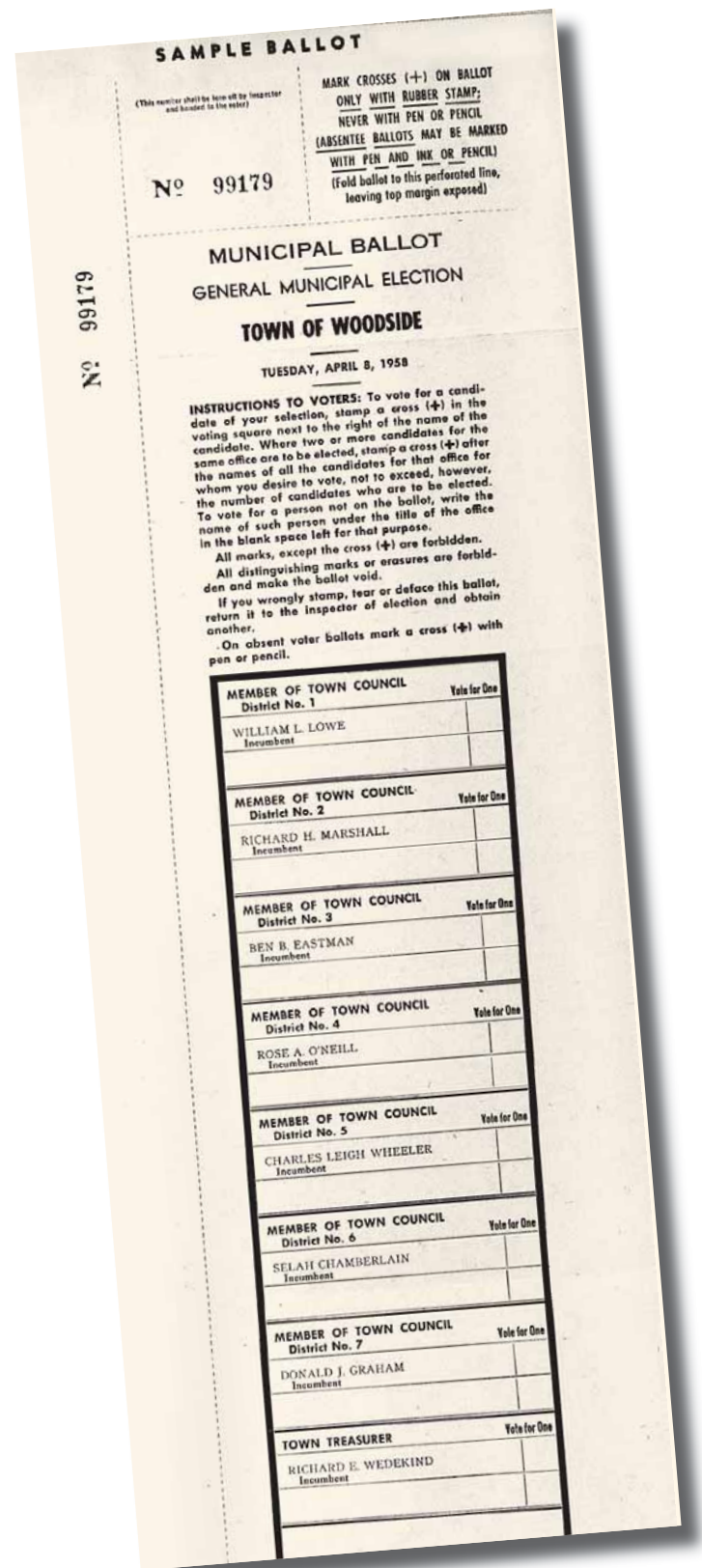
“If it hadn't been for incorporation, I think Woodside would be a real mess right now,” says Trish Hooper.

Ms. Hooper was part of a cadre of women — housewives, in the dismissive parlance of 1950s newspaper reporters — who led the fight to incorporate Woodside in 1956. Knocking on doors, talking to neighbors, circulating fliers and holding campaign meetings in the old Woodside store building, they set out to create a town.

“The men were all working, so the women gave their days to driving around and pushing the recalcitrant into the right field,” Ms. Hooper says. “There were some men involved, but it was primarily women.”

Although hardly anyone objected to the goal of keeping Woodside rural, residential and un-Redwood City-ish, the idea of incorporating and becoming a town was not overwhelmingly embraced by residents.

“I think the general feeling was exactly contrary to what we were trying to put over, that if the town incorporated, it would become a big suburbia,” Ms. Hooper says. “A lot of people didn't understand that we were incorporating



Woodsiders recall the fight over incorporation as they celebrate a half-century of being a town



The Almanac/Marjan Sadoughi

Thalia Lubin, a member of the town's History Committee, pages through Peggy Lowe's scrapbook chronicling the town's incorporation.

to do exactly the opposite."

She says that an ill-fated subdivision on unstable land on Summit Springs Road galvanized many Woodside residents into action and convinced them that a local government was necessary to protect the area.

"We wanted to keep the western hills from being badly subdivided and sliding downhill, (but) a lot of people felt it was just more government meddling," Ms. Hooper says. "They were not willing to see that if the county had jurisdiction over Woodside, they would do whatever they wished."

The result was a divisive battle that culminated in a narrow victory for incorporation proponents, who carried the day by 646 votes to 574. When the election's results were certified, Woodside officially became San Mateo County's 14th municipality.

"It was very polarizing for the town," recalls Trudi Talbot, who moved to Woodside with her husband in 1947, where they built a house on Mountain Home Road. "I had people who were my friends who, because I was work-

ing and voting for Woodside's (incorporation), chose to ignore me and stopped the friendship. People took it very personally."

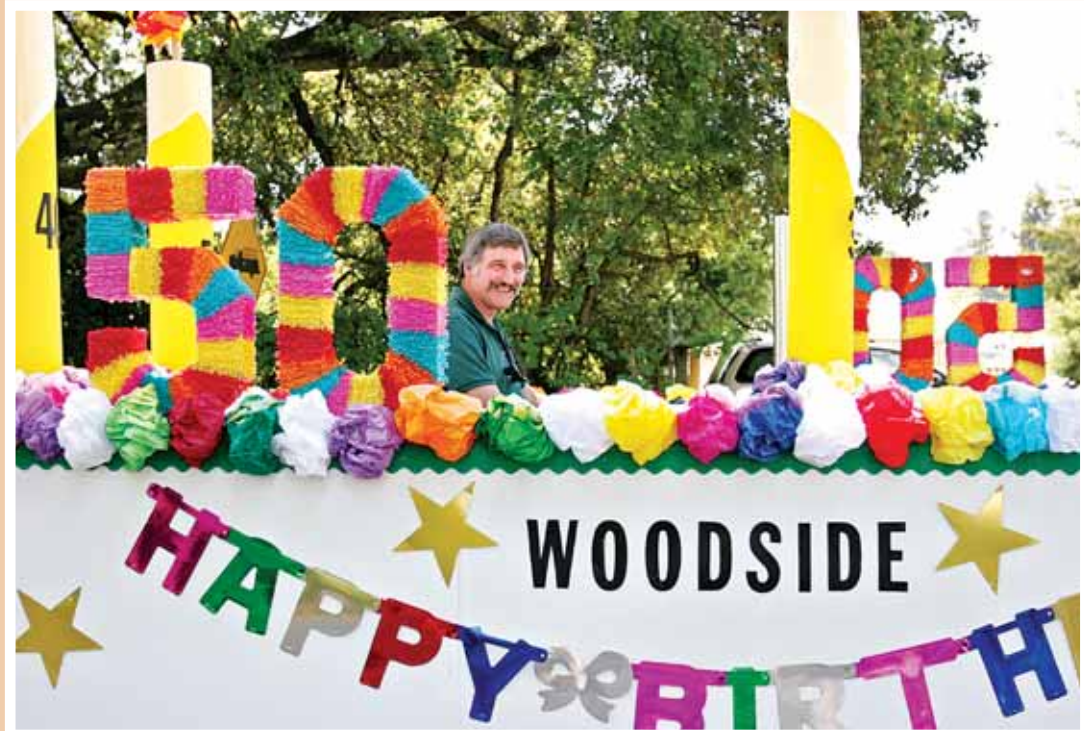
At the time, she was a doctor's wife and the busy mother of four children, Ms. Talbot says.

"I know the reasons we wanted (incorporation) was to call our own shots, have our own mayor and use our own tax money," she says. "Those of us working for it were working primarily so we would have control over our own destiny. I couldn't tell you why some people didn't want it except that it would raise taxes and we would have to take care of our own roads."

With a laugh, she calls the incorporation proponents "ingenues" who had no idea how big of a challenge they were taking on, but boldly went "where angels fear to tread."

"There were a lot of different kinds of people in town, but there were enough who truly cared about the future," Ms. Talbot says. "They could just see the handwriting on the wall, we all could, and we thought we should get busy and

See **BIG 5-0**, page 16



The Almanac/Marjan Sadoughi

Woodside's anniversary celebration kicked off with a birthday theme at this year's **May Day Parade**.

Town celebrations for its 50th year

"IF DISNEYLAND CAN CELEBRATE ITS 50TH ANNIVERSARY FOR A WHOLE YEAR, THEN SO CAN WOODSIDE," SAYS TOWN MANAGER SUSAN GEORGE.

The town's 50th birthday has been the theme of the annual May Day Parade, last month's Day of the Horse, and an exhibit at the Community Museum. On the actual day of incorporation, Nov. 16, Woodside is holding its annual volunteer reception — but with a twist. Instead of the usual holiday party to thank members of the town's committees and commissions, the town is inviting all Woodside volunteers, past and present, to a birthday bash in Independence Hall.

A town-wide 50th anniversary celebration that will be open to the public is tentatively set for next spring, to coincide with the opening of Woodside's first municipal park, Barkley Field, says Ms. George.



The Almanac/Marjan Sadoughi

Museum exhibit maps Woodside's birth as a town

The Woodside Community Museum's artfully displayed exhibit on the town's incorporation 50 years ago offers a nostalgic look back at the soon-to-be town circa 1956. The museum, located in the restored Mathisen farmhouse between Independence Hall and the Village Pub, is open Saturdays, 1-4 p.m., through Nov. 18, and after that by appointment by calling 851-1294. The "Woodside Becomes a Town" exhibit will be up through next spring. The museum's regular hours in 2007 haven't been set yet, so check back with the town.

This 1946 picture shows the dedication of "Scout Hall," which was later relocated and dubbed Independence Hall, the centerpiece of Woodside's Town Hall complex.



Woodside History Archive

BIG 5-0

continued from page 15

do something. We had good advice and good help, and it worked."

Few people are aware that a previous effort to incorporate Woodside failed, says Thalia Lubin, a member of the Woodside History Committee. A treasure trove of newspaper clippings acquired by the committee revealed a story about the failed attempt in the Aug. 16, 1928, issue of the Redwood City Standard, she says.

"We had no idea," Ms. Lubin says. "No one remembered it."

Another important document available at the museum: the official state document for the town of Woodside's incorporation. Ms. Lubin points out that whatever you do, don't call it a city.

Woodside is a town, not a city, and proud of it. There is at least one Woodside resident who is waging a Sisyphean battle to get Caltrans to change a sign on Interstate 280 that refers to the City of Woodside.

Richard Delucchi, a longtime Woodside resident whose recollections were mined for the Woodside Community Museum exhibit on the town's incorporation, said the incorporation campaign "was a big mess."

"I was against it at that time," he says on a DVD about Woodside that is part of the exhibit. "I thought taxes would go up and people would start subdividing the smaller properties."

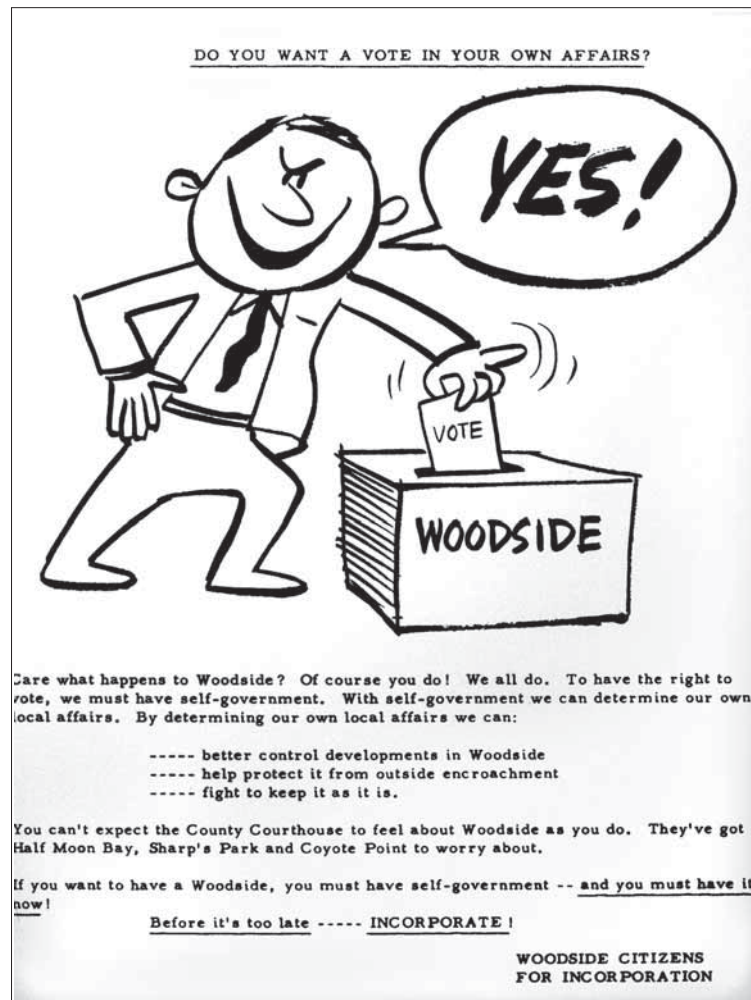
And, 50 years later, there have been subdivisions in Woodside, though not many, and property values — and the resulting property taxes — are exponentially higher than they were in the 1950s. Of course, that's true of all of San Mateo County's cities, as well as its unincorporated areas.

Maintaining a Brigadoon-like state of perpetual small-town innocence is an impossibility, despite the best intentions of Woodside officials like the town's first mayor, William Lowe, who declared, "We have only one purpose in mind, and that is to keep Woodside the way it is."

Ms. Talbot, who was appointed to the very first Woodside Planning Commission and served for eight years, is still convinced that becoming a town was the right thing for Woodside to do.

"(Opponents) were worried that we would do something to ruin our quiet, lovely little village. Silicon Valley ruined our quiet lovely little village," says Ms. Talbot, who moved out of Woodside in the 1970s. "When I go back, I hardly know where I am."

Even so, it would've been



Woodside History Archive

This is one of a series of **cartoon-embellished fliers** that incorporation proponents used to sway voters.

worse if Woodside had remained unincorporated, she says.

"It's kept a lot of its ambience," Ms. Talbot concedes. "Everybody says, when they hear I lived in Woodside, that it's a wonderful town."

Now a resident of Carmel Valley, she's witnessing another battle over incorporation in her current home.

"I hope they can do it," she says of Carmel Valley incorporation proponents. "Carmel Valley is at the mercy of Salinas like Woodside was at the mercy of Redwood City. It was city living, which is fine, but we didn't want that."

The battle over incorporation set the tone for the challenges faced by that first Woodside council. In the town's first year, it became embroiled in a controversy over

limiting dirt-hauling trucks using Woodside and Canada roads, fielded complaints about drag-racing teens terrorizing Canada Road residents, and faced an uproar over the route of the new freeway — Interstate 280 — that would run through the town.

Despite the changes, Marie Wagner Krenz, whose family bought a summer house on Greer Road in 1918 and has returned there for weekends and summers ever since, rejoices that so much of Woodside's rural community feel has been preserved.

"It's so nice that Woodside looks so much as it always has," Ms. Krenz says. "Across from our house we can still see the beautiful woods over where the Mounted Patrol is. There are more houses, but it's mostly the same." ■

ROLEX

OYSTER PERPETUAL 36MM DATEJUST

MAIN STREET, LOS ALTOS • (650) 949-1122
STANFORD SHOPPING CENTER, PALO ALTO • (650) 325-3533

OFFICIAL ROLEX JEWELER
ROLEX OYSTER PERPETUAL AND DATEJUST ARE TRADEMARKS.

Inspirations

**First Baptist Church
Of Menlo Park**

"A small Church with a big HEART"
Worship celebration 11:00 Sunday
Sunday School and Bible Study 9:30
Sound Biblical Teaching, Drama, Music, Retreats
Children's Ministry, Home of New Beginnings Preschool
(650) 323 8544
1100 Middle Ave@Arbor (near Safeway)
www.firstbaptist.com

To include your Church in
Inspirations

Please call
Blanc Yoc at 650-326-8210 ext. 239
or e-mail byoc@pawekly.com

Time to make your business grow?

Advertising in *the Almanac* can help
you reach your potential customers.

Measure A campaign raises almost \$200,000

As of Oct. 21, the campaign to pass Measure A, the 1/8-cent sales tax for parks in San Mateo County and its cities, had raised \$191,736, according to campaign finance reports filed by Parks for the Future.

One-fourth of that came from the Lane brothers, former publishers of Sunset Magazine and books. L.W. "Bill" Lane of Portola Valley and Melvin Lane of Atherton each donated \$25,000 to the campaign, according to the reports, which cover the period from Jan. 1 through Oct. 21.

The largest single donation, \$49,000, came from the Bay Meadows Land Co. of San

Francisco, which is developing a large mixed-use project at Bay Meadows race track in San Mateo.

The San Mateo County Parks and Recreation Foundation gave \$10,000 plus the services of Executive Director Julia Bott. The Peninsula Open Space Trust, a nonprofit land trust based in Menlo Park, also gave \$10,000.

Measure A would raise about \$16 million a year to support county parks, parks in 20 cities, and parks in three special districts, including the Midpeninsula Regional Open Space District. It requires a two-thirds vote to pass. ■

TREES

continued from page 11

said, citing as an example the 1,800 mature liquidambar trees that prefer wetter weather, such as a Florida swamp or an Ohio woods. They grow brittle here after 50 years; one local specimen lost four limbs last year, he said.

The average California street tree lives 30 years, he added. "These trees have been here much longer than average."

If falling limbs cause injuries, a potential litigant would tend to look first to the homeowner's insurance and then to the town's, Mr. Coate said. The city's notifying a homeowner about a dangerous tree would likely be a relevant fact, added Ruben Nino, the director of engineering services.

Replacement trees will be 15-gallon specimens of 15 deciduous species that have desirable qualities — tall when mature and showing "spectacular" fall colors — without the bad habits of breaking pavement or dropping limbs, Ms. Dryer said.

The city's Web site at menlopark.org shows photos of the trees and matches each listed tree with two recommended replacements. A resident can request a different tree and, for a \$226 fee, a larger tree.

For \$25, anyone can appeal a tree-removal decision to the city's seven-member Environmental Quality Commission, whose ruling can then be appealed to the City Council.



Palo Alto Medical
Foundation

A Sutter Health Affiliate

With You. For Life.

Community Health Education Programs November 2006

Web site • www.pamf.org E-mail • publicaffairs@pamf.org

Events & Lectures

"In Vitro Fertilization and Assisted Reproductive Technology 2006"

Tuesday, November 14, 7 – 8:30 p.m.

Salli Tazuke, M.D., PAMF Reproductive Endocrinology

In vitro fertilization (IVF) has become a standard treatment for infertility since its inception in the 1970s. What underlies its success and who is it for? Join us for a discussion of the latest assisted reproductive technologies such as pre-implantation genetic diagnoses.

Hearst Center for Health Education, Level 3, Jamplis Building, Palo Alto Medical Foundation, 795 El Camino Real, Palo Alto. RSVP to (650) 853-4873.

Classes

"Good Nutrition and Feeding Practices for Toddlers," Tuesday, November 14, 2 – 4 p.m.

This class will address parental concerns regarding nutrition and feeding practices. It should be attended by parents or caretakers only.

"Supermarket Wise," Thursday, November 16, 6:30 – 8:30 p.m.

Learn techniques for making healthier food choices in a local supermarket with tour dietitian Karen Ross, M.S., R.D.

"Managing Your High Blood Pressure," Monday, November 27, 3 – 5 p.m.

This class provides information on causes, risks and treatment of high blood pressure, and approaches to successful reduction, such as exercise and medication.

"Moving Through Pregnancy," Mondays, November 27 – December 11, 7 – 9 p.m.

A three-session program covers a variety of topics related to pregnancy.

"What You Need to Know About Warfarin," Wednesday, November 29, 6 – 8 p.m.

Learn what warfarin is, why you are taking it and how you can help yourself.

"Advance Health Care Directives," call for available dates and times.

PAMF's specially trained volunteers will provide advice and answer questions about the Advance Health Care Directive form. Free.

Support Groups

Cancer (1st & 3rd Tuesdays) • Diabetes (1st Wednesday) • Multiple Sclerosis (2nd & 4th Mondays) • Sleep Apnea (1st Thursday) • Alcohol and Drug Education (Every Tuesday) • Healing Imagery for Cancer Patients (Nov. 1 & 15)

For information on class fees and to register, call the Education Division at (650) 853-2960.

TAKE ME TO THE RIVER!



We are looking for a **Full-time Sales Representative** with *great sales skills... you're able to land the big fish.*

We want an energetic, enthusiastic, confident, and a self-directed professional – *one who loves to cast for great sales results.* Someone who possesses strong organizational and public interaction skills. You should have the ability and demonstrated experience to make public and one-on-one presentations. You must fish well with minimum supervision.

Your responsibility is to develop and present effective marketing programs – *hook, line and sinker* – that result in sales. You will be working with a base of current and prospective customers within a geographic territory.

We value and actively seek to recruit, develop and retain people with backgrounds and experience reflecting the diversity of the communities we cover.

The Almanac

For immediate team consideration, FAX your resume to:
Neal Fine • 650-854-3650

or email: nfine@almanacnews.com

We offer a competitive compensation & benefits package including medical, dental, paid vacations, sicktime, and a 401(k) plan.

New Look, New Location



Same great quality
and service.

We're proud to announce
the grand re-opening of our store.

You've always looked to your Benjamin Moore® retailer for great products and great advice. Well, that's not changing. But now our newly redecorated store will make your entire shopping experience even better. You'll find more inspiration to help you choose paint and decorating tools. Our experts will help you bring your ideas to life, with the confidence you need to get the job done right.

©2004 Benjamin Moore & Co. Benjamin Moore and the triangle M symbol are registered trademarks and The Leader in Paint & Color is a trademark licensed to Benjamin Moore & Co.

Benjamin Moore®
The Leader in Paint & Color™



Gray's Paint & Wallpaper

717 Oak Grove Avenue, Menlo Park
(Across from the Fire Station)
650-322-2238

Post news and views on

town
square

www.AlmanacNews.com

Five Portola Valley teachers honored

Five teachers in the Portola Valley School District will be honored Wednesday, Nov. 15, for their combined 75 years of service to the district.

The occasion is the PTO's annual recognition ceremony in the Corte Madera School multi-use room, 4575 Alpine Road in Portola Valley. The event begins at 5 p.m. with refreshments, followed by the presentation of awards at 5:30 p.m.

The Corte Madera honorees are led by Karen Reis, who has taught Spanish at the school for

20 years. Donna Kasprovicz, sixth-grade teacher at Corte Madera, and Juliet Green, who specializes in music, drama and chorus at the middle school, share honors for their contributions to the district for 15 years.

Jan Avila, who launched the Reading Recovery program at Ormondale and has helped early learners become readers, is being honored for 15 years of service. Barbara Gardyn, kindergarten teacher at Ormondale, is being recognized for a decade of service.

PTO presidents and vice-

presidents from each school will make the presentations: Carolyn Carhart-Quezada and Buffie Williams from Ormondale, and Marti Sterns and Donna Andrightto from Corte Madera.

People with information about the honorees — memories, stories, comments or photos — are asked to e-mail: carhart-quezada@sbcglobal.net or martisterns@hotmail.com.

The regular meeting of the school board will be held after the event in Room 1001 at Corte Madera.

Woodside Priory celebrates 50th anniversary

The Woodside Priory community observes two events on Founders Day, Saturday, Nov. 11 — the first Mass celebrated by Father Egon Javor in 1956 on behalf of the seven Benedictine monks who purchased land in Portola Valley to found the school, and Father Egon's 90th birthday. He turned 90 Oct. 18.

The Mass will be held at 5 p.m. in the Priory Chapel. A reception will follow in the school dining hall with a by-decades photo display in an adjacent building on the campus at 301 Portola Road in Portola Valley.

An overflow crowd of friends and colleagues from five decades is expected to attend and hear stories and reminiscences that began even before Nov. 11, 1956.

Abbot Matthew Leavy, O.S.B., will bring the best wishes of Woodside Priory's parent community in New Hampshire. Abbot Matthew was part of the Priory community when he was a young priest just beginning his vocation.

Father Egon and the other six Benedictine monks who founded the Woodside Priory

community were all refugees of Communist domination in Hungary in the post-World War II years. In the 1970s, they affiliated with St. Anslem Abbey in New Hampshire to better establish American roots.

The founding monks also brought high school soccer to the San Francisco Bay Area. The nearest high school team was in Monterey, and the boys played local college teams. Among the reminiscences is sure to be the time Woodside Priory beat Stanford.

Woodside Deli
Italian Delicacies

Gourmet Italian Foods

Now featuring **Fra'mani Salumi**

OPEN 7 DAYS
Mon-Sat 8am-6pm • Sun 8am-4pm (650) 369-4235

WEEKLY SPECIALS

Columbus Salame 10 oz. \$4⁹⁹ Exp. 11/21/06	Stella Gorgonzola \$5⁹⁹ lb. Exp. 11/21/06	Pecorino Romano \$7⁹⁹ lb. Exp. 11/21/06
---	--	--

1453 Woodside Road, Redwood City (across from Woodside Plaza)

Cook's
Since 1928
SEAFOOD
Restaurant & Fresh Fish Market

BEST FRESH FISH • BEST SEAFOOD

Cook's Seafood Restaurant & Market
"A GREAT PLACE TO EAT LUNCH OR DINNER"

Seafood Dinners from \$5⁹⁵ to \$9⁹⁵
Clam Chowder - Seafood Salads
Our Award Winning Fish & Chips
Prepared from the finest Alaskan halibut.

Also featuring a full service fresh fish market.
Restaurant: Mon-Sat 11-8:30 pm, Fri 'til 9 pm
Market: Mon - Sat 9 - 7, Closed Sunday

751 El Camino Real Call in Orders Welcome
Menlo Park, CA 94025 Phone 650 325-0604 or 322-2231

A Jarretiere Event

Friday - Nov. 10th 11am to 6pm

Saturday - Nov. 11th 11am to 4pm

Please join us as we unveil the new and wonderful flexible expandable collection. There is an ideal jewel for your personal style. Plus Saturday only Welcome Annete Aiassa of Castlenuovo d Aiassa Designs.

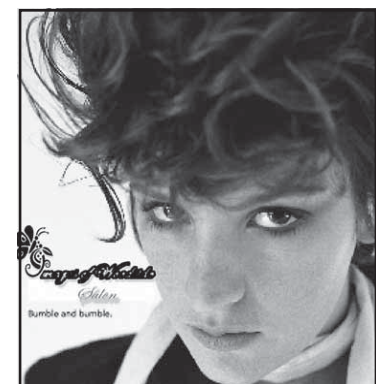
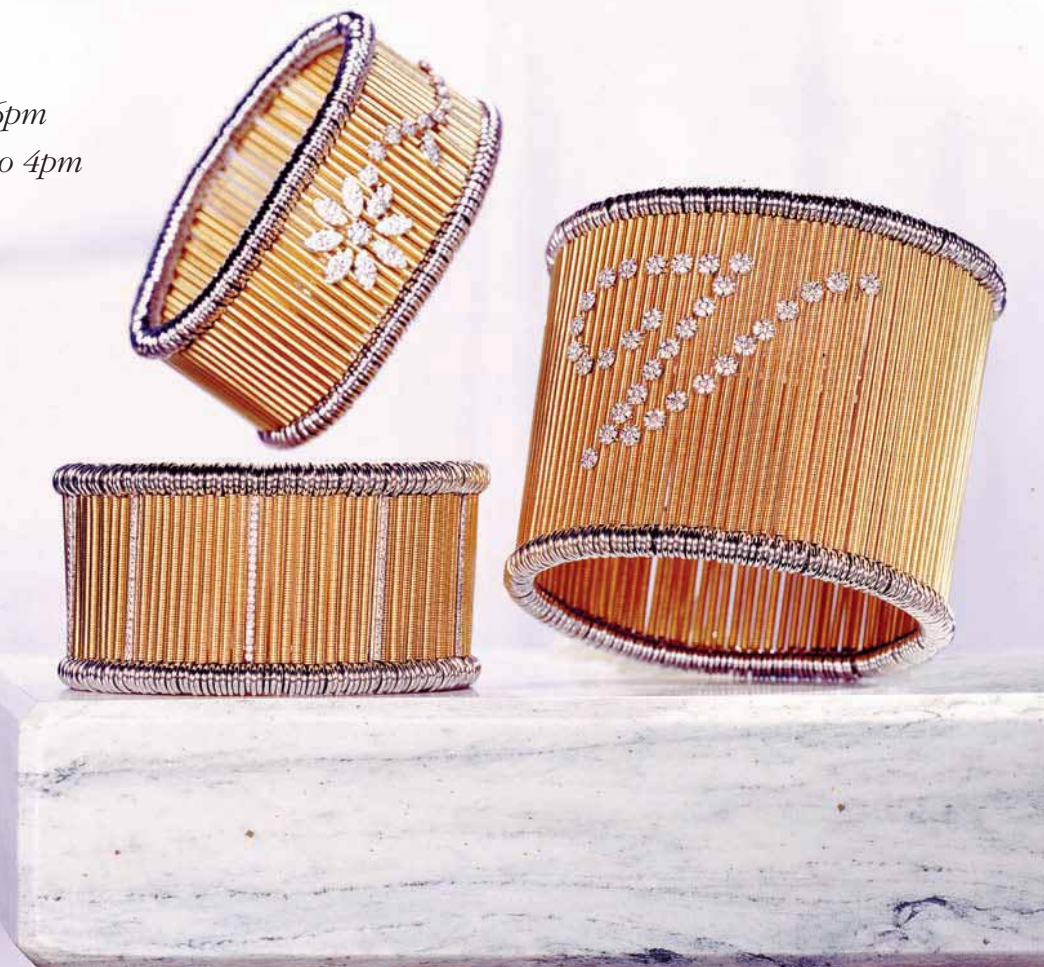
We look forward to seeing you.



DARREN MCCLUNG

PRECIOUS JEWELRY
THE STANFORD BARN
700 WELCH ROAD SUITE 102
PALO ALTO, CA (650) 321-5994

JARRETIERE



Images Of Woodside Beauty Salon

3040 Woodside Road, Woodside, Ca.
(650) 851-7103

We offer
Family haircuts,
Hair colors, Perms,
Wedding & Formal
hair styles, Manicure
& Pedicure, Facials, &
Body treatments.

Now carrying
BUMBLE & BUMBLE

Open:
Tuesday - Friday
9 a.m. - 6 p.m.
Saturday 10 a.m. - 4 p.m.
(Located near Buck's Restaurant)

Sports

NEWS OF LOCAL ATHLETES AND TEAM SPORTS

Menlo School in wild 51-41 football victory

By Keith Peters
Palo Alto Weekly

In a wild game that lasted over three hours and finished in the dark, the Menlo School football team kept its PAL Ocean Division co-title hopes alive and a possible postseason berth intact with a 51-41 victory over host Carlmont on Friday afternoon.

The Knights (5-1, 8-1) pulled into a first-place tie with the Scots (5-1) and need only to beat lowly Jefferson next week to assure themselves of a co-championship.

Menlo jumped out to a 27-19 lead at halftime and increased it to 41-19 before Carlmont began its wild rally, scoring 22 points

in five minutes to close to within 44-41 with 3:28 left to play.

At that point, Menlo quarterback Andrew Dixon hit James Walker with a 45-yard touchdown pass with 2:22 remaining to secure the victory.

Dixon threw for 367 yards and four touchdowns. Fellow senior Anthony Bouvier scored three touchdowns, had eight receptions for 150 yards, kicked two field goals and had an interception.

Menlo wide receiver Ricky Hawkins caught five passes for 165 yards and senior running back Leon Ivery rushed for 153 yards in the wild offensive display.

The two teams combined for 92 points, over 1,000 yards and missed six missed extra points. ■

One Vikings survivor in Pop Warner playoffs

By Jim Gallagher
Vikings Boosters

Menlo-Atherton Vikings teams contending for Peninsula Conference Pop Warner championships were whittled from three to one over the Nov. 4-5 weekend. Following is a summary of the results.

Junior PeeWees: Early in their Nov. 5 semifinal playoff game against the Gilroy Browns, the Vikings realized the Browns couldn't stop M-A tailback Khalil (Lil) James. The result: James carried more than a dozen times for three touchdowns in a 26-7 Vikings victory at Terra Nova High in Pacifica. James' scoring runs of 30 and 11 yards, together with a 48-yard fumble return by Campbell Roellig, nudged M-A to an 18-7 halftime advantage. Another James score of three yards, plus a two-point conversion kick by Dominic Andrighetto, put the game out of reach in the third quarter. On Nov. 12 at 8 a.m., the Vikings play for the Division II Peninsula Conference championship at Woodside High against Hollister, the only team to defeat them this season.

PeeWees: Although they rallied to overcome a halftime deficit, the Vikings were evicted from playoff contention with an 18-7 loss to Delta Bay. Trailing 6-0 at the half, Menlo-Atherton used a 40-yard pass from Marcus Prioste to Marcus Franklin to set up Sean Barrett's touchdown run. Prioste passed to Barrett for the go-ahead conversion. However, a critical interception led to Delta Bay's deciding score, and the Brentwood team added a late touchdown for the final margin. For the Vikes, Talasi (T) Teu's interception set up the touchdown drive. Other defensive standouts included Wyman Boyd, Alex Lopez, Jack Heneghan, Michael Falepouono,

Dylan Kappeler and Keenan Gates.

Midgets: A 7-6 halftime lead wasn't quite enough for the Vikings on Nov. 4 in Hollister, as the Sunnyvale Knights charged from behind for a 20-7 victory. Tavasa Pale slashed for the Vikings touchdown after a fumble recovery, and Josiah Paye passed to Marquise Tolson for the conversion. A Vikings drive was spoiled by a third-quarter penalty, and Sunnyvale cashed in with a 70-yard breakaway. With a minute left, Sunnyvale scored the clincher. Winding up the season with strong defensive games for the Vikings were Leo Tovo, Brian Munks, Dante Andrighetto and Buck Stanek. Defensive back Brandon Gibson shut down the Knights' heralded passing game. With the loss, many M-A Midgets concluded their Pop Warner careers, and will be joining the Vikings exodus to high school rosters in 2007. ■

M-A's perfect football season ends

■ Bears fall into a two-way tie for first after loss to Aragon

By Craig Wentz
Palo Alto Weekly

Menlo-Atherton's perfect football season came to an end Saturday with a 27-22 loss to host Aragon in a key PAL Bay Division game.

The Bears (5-1, 8-1) and Dons (6-1, 7-2) are now tied for the division lead. Aragon has finished its regular season, but M-A still must host Woodside next Saturday and win that game to earn a co-champion-

ship with Aragon.

Woodside suffered an upset loss to Terra Nova on Friday, 14-3, and is out of the championship picture.

Had the Bears beaten Aragon, they would have won the Bay Division crown outright.

Aragon provided M-A with its best competition of the season, rushing for 320 yards against the Bears.

Both teams had three turnovers, but M-A had no continuity on offense. Junior quarterback Troy McCabe completed just six of 20 passes for 92 yards and was intercepted three times.


McCabe was sacked four

times, with the Bears' running game picking up only 77 yards on 33 attempts.

Despite its offensive woes, M-A actually grabbed the lead at 22-21 when McCabe connected with Kevin DiSibio on a 50-yard TD pass with 6:09 left in the game.





After an offside penalty on Aragon on the extra point, M-A decided to go for two and got it with Saia Haatoa going up the middle for the PAT.

Aragon's Chris Seminoff hauled the ensuing kickoff just inside the one-yard line and raced for the game-winning 99-yard touchdown with 5:54 remaining to play. ■



BOWMAN
INTERNATIONAL SCHOOL

The Bowman program builds confidence, creativity and academic excellence.







- ◆ Lower School - Grades K - 5
- ◆ Middle School - Grades 6 - 8
- ◆ Individualized, self-directed program
- ◆ Rich international & cultural studies
- ◆ Proven, Montessori approach
- ◆ State-of-the-art facility
- ◆ Low student-teacher ratio

www.bowmanschool.org
4000 Terman Drive | Palo Alto, CA | Tel: 650-813-9131

“When you don't want just anybody working on your car!”

• TIRES • ALIGNMENTS
• SHOCKS • BRAKES



2115 El Camino Real
Redwood City

650.365.0280

The #1 Cadillac Service Center on the Peninsula

Now Open Saturdays 9-5

Call for an appointment




Exclusive Pickup and Delivery Service

Monday Through Friday ONLY. Call For Details.

Jacob Lozano 650-342-9500 x111 or jrodriguez@PutnamGm.com



PUTNAM CADILLAC

193 California Dr., Burlingame

650-342-9500





Vote for Boyle, Duboc and Winkler on November 7



“His work experience, strong negotiation skills and support from the business community would bring another dimension to the council.”

The **Almanac**
from the Almanac's
endorsement of John Boyle

“Duboc highlighted the council's efforts to streamline the staff in the midst of a tightening fiscal picture and develop tax-generating businesses. Given the lack of playing fields, she pledged to pursue sports fields at Bayfront Park if voters approve an advisory ballot measure on the same ballot.”

from Palo Alto Daily News' endorsement of Lee Duboc

“I support Boyle, Duboc and Winkler because they support new playing field for our kids located at Bayfront Park. By electing Boyle, Duboc and Winkler and supporting new fields for our kids, everyone in our city wins!” -Andy Kirkpatrick, Pop Warner football coach and Little League baseball commissioner.

“It's clear to us that Winkler and Duboc have what they consider to be the best interests of Menlo Park at heart, and we see no need to remove them.”

San Mateo County Times
in their endorsement of Mickie Winkler and Lee Duboc

“We recommend...Duboc and Boyle for Menlo Park City Council.”
PALO ALTO DAILY NEWS

"Boyle, Duboc and Winkler recognize a growing fiscal crisis and have a sound plan to minimize unnecessary spending, avoid further cuts, and to raise sufficient revenue to pay Menlo Park's excellent employees a competitive wage. We should reward them with a vote of confidence."
-Joe McNamara, former Chief of Police, San Jose, CA and Kansas City, MO

“...his style is to seek compromise, try to see both sides and listen.”



from the Palo Alto Weekly's endorsement of John Boyle

“Boyle, Duboc and Winkler will bring business vitality back to Menlo Park. They will stand up to special interest groups that seek to derail our progress with lawsuits and referendums. We need all three on our city council to keep Menlo Park open for business.” - Greg Stroud, Menlo Park resident and former Vice President of Sales for Sun Microsystems.

Paid for by "John Boyle for City Council", FPPC# 1289008; "Re-elect Lee Duboc", FPPC# 1289189; and "Re-elect Mickie Winkler", FPPC# 1289223.



Portola Valley Theatre Conservatory

On stage in The Portola Valley Theatre Conservatory's production of "The Laramie Project" this weekend are, from left, Sheryl Abbott, Barbara Evans, Max Ball, Sally Pfeleiderer, Diane Rezendes and, center front, Ryan Pfeleiderer.

'Laramie Project' continues this weekend in Portola Valley

A play about intolerance, forgiveness, reconciliation, love.

With two preview nights and three performances behind them, the Portola Valley Conservatory cast is geared up for three more performances of "The Laramie Project" this weekend.

Doors to Lane Family Hall at Valley Presbyterian Church in Portola Valley open at 7:10 p.m. for the performances at 7:30 p.m. on Friday, Saturday and Sunday, Nov. 10-12.

To reserve a ticket, call the church office at 851-8282, ext. 411. The suggested donation is \$20 for adults and \$10 for youth. The play is recommended for audiences from eighth-graders through adult.

"The Laramie Project" is the true story of Matthew Shepard, a young man who was murdered in Laramie, Wyoming, in 1998, the

victim of a hate crime perpetrated by two of his peers solely because he was gay. News of Matthew's story prompted a New York acting company to travel to Laramie and conduct some 200 interviews with the town's citizens. Those interviews were the bases for the play.

"The story, told through the eyes of the Laramie townspeople, is extremely moving, human and thought provoking," said the Rev. Cheryl Goodman-Morris, the director.

■ POLICE CALLS

This information is from the Atherton and Menlo Park police departments and the San Mateo County Sheriff's Office. Under law, people charged with offenses are considered innocent until convicted.

ATHERTON

Grand theft report: MP3 player and cell phone stolen from locker at Menlo-Atherton High School, 500 block of Middlefield Road, Oct. 27.

Burglary report: Items stolen from dorm at Menlo College, 1000 block of El Camino Real, Oct. 27.

Robbery report: Fence-jumping robbery suspects arrested with assistance of San Mateo County Sheriff's Office, first block of Holbrook Lane, Nov. 1.

MENLO PARK

Fraud reports:

■ Vehicle sold illegally with forged signature on DMV form, 200 block of Blackburn Avenue, Oct. 30.

■ Credit report showed fraudulent account opened with victim's Social Security number and birth date, 800 block of Santa Cruz Avenue, Oct. 30.

Grand theft report: Leather jacket val-

ued at \$1,000 stolen from business, 1100 block of El Camino Real, Oct. 26.

Auto-burglary reports:

■ Radio stolen from vehicle, 700 block of Coleman Avenue, Oct. 29.

■ Backpack and other items stolen from vehicle, 800 block of Coleman Avenue, Oct. 29.

Burglary reports:

■ Business broken into and computer equipment stolen, 1000 block of O'Brien Drive, Oct. 30.

■ Computer equipment stolen from business and suspect arrested, 1100 block of O'Brien Drive, Oct. 30.

■ Flat screen TV stolen, 100 block of Durham Street, Oct. 30.

Stolen vehicle report: Gray 1989 Toyota Camry stolen, 1100 block of Ringwood

Avenue, Oct. 31.

Spousal abuse report: 1100 block of Windermere Avenue, Oct. 31.

Battery reports:

■ Verbal argument and physical altercation between family members, 1200 block of Sevier Avenue, Oct. 27.

■ Alleged battery from co-worker in 100 block of Linfield Drive, Oct. 30.

WOODSIDE

Weapons report: Person threatened verbally and with hunter's knife by possible gang members in vehicle at Woodside High School, 100 block of Churchill Avenue, Oct. 25.

Burglary report: Large flat screen TV taken from wall after garage door apparently pried open, 1000 block of Mountain Home Road, Oct. 25.



Call me today about our full line-up.
(Auto. Home. Life. Commercial.)

(650) 691-4770

BALDEV MANN
Insurance Agent

1901 OLD MIDDLEFIELD WAY STE 6
MOUNTAIN VIEW
a029821@allstate.com
CA Lic: 0F24165



Allstate
You're in good hands.

Subject to availability and qualifications. Insurance offered only with select companies. Allstate Insurance Company, Allstate Indemnity Company, Allstate Property and Casualty Insurance Company, and Allstate Life Insurance Company: Northbrook, Illinois ©2006 Allstate Insurance Company.

WANT TO MAKE WAVES?

TRY THE SURF IN
TOWNSQUARE.
The Almanac's Online
Gathering Place

www.almanacnews.com



Jensen Hauser

CUSTOM UPHOLSTERING
Swiss Craftsmanship Since 1950

98 5th Ave. • (650) 365-5027 • Redwood City



Mending Relationships

Teens • Parents • Individuals & Couples

LaVergne Poe, MA

165 Arch Street Redwood City, CA 94062

650.529.1489

Marriage & Family Therapist Intern IMF 44743

Supervised by Sandra Feltner, MFT License # 39519

Weekend Appointments Available

MARIA is BACK
with her mouth
watering desserts!

PALMA is doing great
and will be here
Thursday-Saturday.

Renowned
CHEF IGNAZIO MELIS
from Italy and California
is now bringing his
talents to Buon Gusto.

Same Menu with LOTS
of NEW SPECIALS!



PARKSIDE GRILLE

Nestled in the wooded hills of
Portola Valley just 4 minutes west of 280

- ✿ Make Your Holiday Party Memorable In Beautiful Portola Valley
- ✿ Reserve Our Newly Renovated Private Rooms
- ✿ For Info Please Contact Our Event Organizer at 650-529-9007

Dinner: Every Night
Lunch: Tuesday - Friday

529 - 9007 • 884 Portola Rd. Portola Valley
www.parksidegrille.net

A TASTE OF THE PENINSULA
A cornucopia of restaurants and cafes providing
the finest dining from brunch to dessert.

Coffee & Tea

Connoisseur Coffee Co.

2801 Middlefield Road
Redwood City
(650) 369-5250
9am-5:30pm
Mon. - Sat.
Coffee roasting & fine teas,
espresso bar, retail
& wholesale.

Main St. Coffee Roasting Co.

150 Elm St., Redwood City
(650) 368-3430. M - F
6am-2pm, Sat. 7am-2pm
Fresh roasted coffee beans
- European style. Full
coffee bar. Now serving
breakfast: M-F 6am-11am;
Sat. 7am-1 pm
Lunch: M-F 11am-2pm



Breakfast, Lunch & Dinner

Parkside Grille

884 Portola Road, Portola
Valley (650) 529-9007.
Lunch: T-F, 11:30-2:30.
Dinner: 7 nights. Bold and
innovative cuisine in an
elegant country setting, nes-
tled among the redwoods.

Vive Sol-Cocina Mexicana

2020 W. El Camino Real,
Mtn. View (650) 938-2020.
Specializing in the Cuisine
of Puebla. Open daily for
lunch and dinner.



To Advertise in "A Taste of the Peninsula" call The Almanac 650-854-2626.

Editor & Publisher

Tom Gibboney

Editorial

Managing Editor Richard Hine
News Editor Renee Batti
Lifestyles Editor Jane Knoerle
Senior Staff Writers
Marion Softky, Marjorie Mader
Staff Writers Andrea Gemmet,
David Boyce, Rory Brown
Editorial Intern Stephanie Cadora
Contributors Barbara Wood,
Bryan Wiggan, Kate Daly,
Bill Rayburn, Miles McMullin,
Katie Blankenberg
Special Sections Editors
Carol Blitzer, Sue Dremann
Photographer Marjan Sadoughi

Design & Production

Design Director Raul Perez
Assistant Design Director
Katie Cvitkovich
Designers Linda Atilano,
Gail Thoreson, Elise Eisenman,
Eric Kinnaird, Nancy Hwang,
Tanya A. Ortega

Advertising

Advertising Manager Neal Fine
Display Advertising Sales
Roxanne Bates
Real Estate Account
Representative Donna Berryhill
Real Estate Assistant
Monica Asborn

Advertising Services

Coordinator M.J. Hayden
Receptionist Renee Meil
**Circulation, Classified,
& Legal Advertising** Bill Rayburn

Published every Wednesday at
3525 Alameda de las Pulgas,
Menlo Park, CA 94025
(650) 854-2626
FAX (650) 854-0677

e-mail news (no photos please) to:
editor@AlmanacNews.com
e-mail photos with captions to:
photo@AlmanacNews.com
e-mail letters to:
letters@AlmanacNews.com

The Almanac, established in September, 1965, is delivered each week to residents of Menlo Park, Atherton, Portola Valley and Woodside and adjacent unincorporated areas of southern San Mateo County. The Almanac is qualified by decree of the Superior Court of San Mateo County to publish public notices of a governmental and legal nature, as stated in Decree No. 147530, issued November 9, 1969. Voluntary subscriptions are available for delivery to homes in Menlo Park, Atherton, Portola Valley and Woodside at \$30 per year or \$50 for 2 years. Subscriptions by businesses or residents outside the area are \$50 for one year and \$80 for two years.



WHAT'S YOUR VIEW?

All views must include a home address and contact phone number. Published letters will also appear on the Almanac Web site, www.AlmanacNews.com, and occasionally on the Almanac's Town Square forum.

TOWN SQUARE FORUM

POST your views on the Town Square forum at www.AlmanacNews.com

EMAIL your views to letters@AlmanacNews.com. Indicate if it is a letter to be published.

MAIL or deliver to: Editor at the Almanac, 3525 Alameda de las Pulgas, Menlo Park, CA 94025.

CALL the Viewpoint desk at 854-2626, ext. 222.

We can make a difference

The catastrophic threats to our planet laid out by Al Gore in his film and book "An Inconvenient Truth" has shaken some of us and gotten our attention. Now what can we do?

Without national or international leadership on this incredibly important and complex issue, are we simply doomed to go it alone as individuals, saving a little energy here and postponing a trip there? Clearly, this is a crisis that can be solved only by extraordinary cooperation, but someone has to drive the bus. So far, Mr. Gore's crusade has found many supporters, but others continue to mistrust him, including those who think he is just fishing for another chance at the presidency.

EDITORIAL
The opinion of The Almanac

Anyone who believes that, and who dismisses global warming as a political ploy, should talk to the climate change scientists. They are seeing more and more evidence that the earth is in for a bruising climb in temperature that will drastically change our environment in a devastating way.

The warm-up in worldwide weather already is melting the icecaps and, in not too many years, is forecast to cause flooding in low-lying areas worldwide, including right here in Menlo Park and Atherton. Many animal species, including humans, as well as plant life, will have to adapt if they can, and some will simply disappear.

As Al Gore reminds us, we needn't wring our hands over this. There are ways to act locally and have an impact, however small. Consider the case of Portola Valley, a hamlet of 4,600 souls whose local government has taken it upon itself to sign what is called the Mayors Agreement on Climate Change, which echoes the much more famous Kyoto Protocol.

The agreement says the town will lower greenhouse gas emissions

from its own operations to 7 percent below 1990 levels by 2012. Residents and local businesses will be encouraged to participate.

Portola Valley Mayor Steve Toben says he signed the agreement because scientific opinion on the issue "is increasingly settled." In other words, fewer and fewer scientists dispute the findings so clearly laid out in "An Inconvenient Truth." And even though Portola Valley, which is home to 400 Sierra Club members who pushed hard for the agreement, has already adopted many "green" initiatives, Mayor Toben said he "really wanted to extend the town's commitment to environmental protection."

That is an ambition we wish could be echoed by local governments around the world. Portola Valley is a small town, but it is a start. As noted in last week's cover story by David Boyce, other local communities, including Menlo Park and Woodside, are looking at the issue as well. We hope they will soon initiate programs of their own to reduce production of greenhouse gases. As for us, local governments cannot force us to act, but they can design incentives and other enticements for residents and businesses to take action too.

All of this effort may sound like a very tiny drop in a very large bucket, one that won't pare even a fraction of a degree of temperature from our out-of-control problem. But take a look at California's recent commitment to begin regulating emissions of greenhouse gases by large industries in the state. That effort started in the state Legislature, and was helped along by our own Ira Ruskin, assemblyman from Redwood City, who a few years ago was a Redwood City councilman.

Portola Valley, Redwood City, and even the state of California, may be relatively small actors in taking on a highly complex planet-sized problem, but if the world is going to solve global warming, people and communities need to get on the right side of this and become part of the solution. Why not start here and start now?

LETTERS
Our readers write

Somber day lightened by tiny blooper

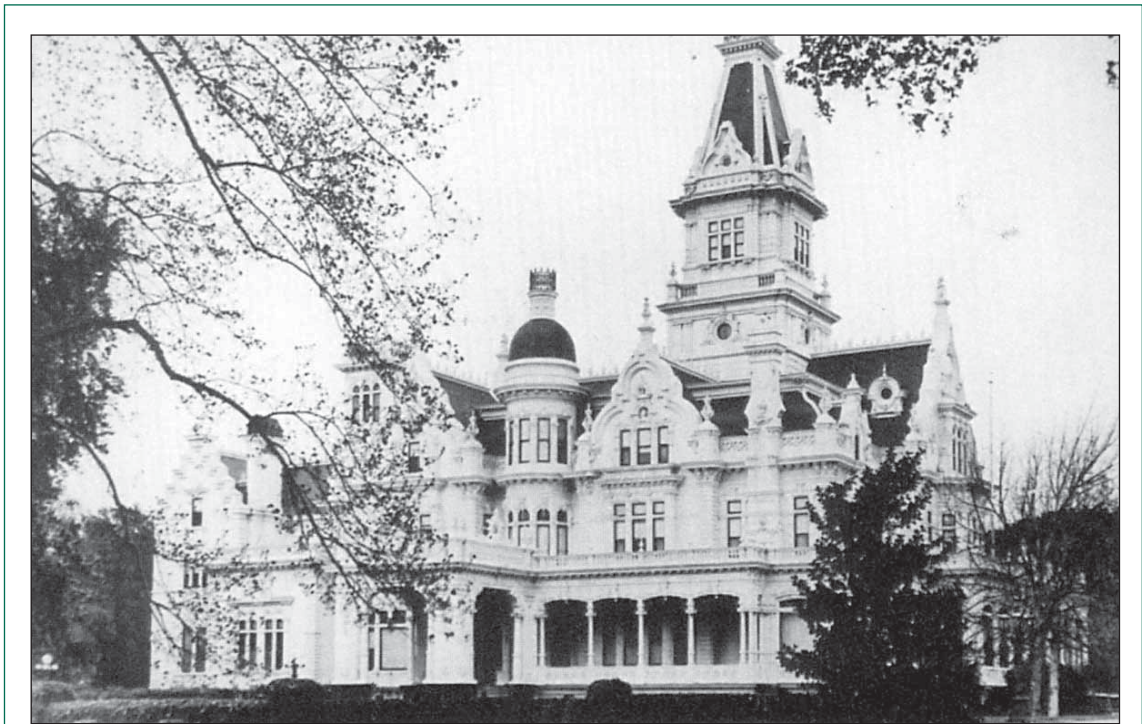
Editor:

A wonderful remembrance ceremony was held last month for the imminent deconstruction of what was, until 30 years ago, Portola Valley School.

Many spoke, including the current superintendent, teachers and the students of Linda Vlastic's class, who sang as they found and recovered the time capsule.

Although we currently think of these buildings as our "late" Portola Valley Town Center, the edifice spent the first half of its life as our community middle school until the school board felt it was too much of a liability for the children to spend most of their day in buildings straddling the San Andreas Fault.

That action planted the seeds of its upcoming takedown. Before closing the school in the 1970s, the board convened a public hearing. Opening remarks were made by Mrs. Dorothy Regnery, then the Portola Valley town historian. Reading from her scribbled



Menlo Park Historical Association

Our Regional Heritage

Linden Towers, the estate of James C. Flood, was built in the 1880s along Middlefield Road in what is now Atherton. Many years later the home was torn down and replaced by Lindenwood, a new Atherton neighborhood.

notes about the setting of the school site, she mistakenly read the letter, "e" in place of the first "c" in the word, **tectonic**, when

she recited, "...and Teutonic creek was present at the site." With that one tiny blooper, she thus changed the meaning of both words from

the intended, **geologic forces** to "an unlikable German."

See **LETTERS**, next page

LETTERS

Continued from previous page

Yes, it brought down the house and set the stage for a less formal, typical Portola Valley town meeting — the way it should be.

Sheldon Breiner
Buckeye, Portola Valley

Woodside has right to restrict cyclists

Editor:

I was quite surprised to read a few weeks ago that the Woodside town attorney has issued an opinion that limits on bike events run counter to the Bill of Rights per the freedom of assembly clause. Yet she goes on to qualify this right, noting that if an event “will unduly impede, obstruct, impair or interfere with” traffic or threaten public safety the Woodside ordinance is enforceable.

Might I invoke the legal concept of *res ipsa loquitur* (literally, “the thing speaks for itself”)? Besides the well-reasoned issue of the dangers of Old La Honda Road, riders on narrow roads such as Albion, Manzanita and others regularly threaten the safety of townspeople, who literally have nowhere to go to avoid these packs. On major thoroughfares such as Canada Road,

TOWN SQUARE

These letters will also be posted in TownSquare (www.AlmanacNews.com), where you can comment on them and post your own views.

traffic is regularly obstructed by large groups riding side by side.

Bob Susk and Dave Tanner have it right: Uphold the ordinance and prevent Woodside from further becoming a tourist attraction. Citizens have rights, too, and the quiet enjoyment of one's town is one of them.

Leon G. Campbell
Albion Avenue, Woodside

Summit Prep is looking for a break

Editor:

Is a break from the upheaval in sight for students at Summit Preparatory Charter High School?

I applaud the effort by Summit's leadership to begin the school's charter renewal process now, well before the two-year charter expires in May 2008. The school was forced into a difficult re-chartering process earlier this year. The tight timing caused tremendous stress on the students and parents, requiring students to

go through the school application process twice.

The Sequoia school district's decision to give Summit a two-year charter, rather than the usual five-year timeframe, creates looming uncertainties again.

An early, favorable decision from the Sequoia district on Summit's charter renewal application will resolve these uncertainties. The new application allows ample time for all possible procedural delays and appeals. Guided by their teachers, students will be able to give full attention to their purpose in being at Summit — preparing for college and for life.

Mimi Sabo
Sherman Avenue, Menlo Park

Overpopulation a factor in global warming

Editor:

Global warming has become of major interest recently, as last week's cover article “Cooling It” by David Boyce illustrates. Most of us do need to make changes in the way we live.

One partial solution is seldom mentioned: Choose to produce smaller families. Even with famine, war and natural disasters, the world population continues

to explode. Over population is an issue that cannot be ignored. It too, affects each and every one of us.

Jackie Leonard-Dimmick
Walnut Avenue, Atherton

Atherton has an opportunity to move ahead

Editor:

Atherton currently has a significant opportunity to make progress on important long-term issues. With last year's passage of a five-year parcel tax, the 2006 council elections behind us, and the overwhelming favorable response in the recent police services survey, now is the time to focus on the town's pressing facility needs.

Our police administration building is nearly 50 years old, and deficient in many respects. There is no locker room for women officers, no restrooms for persons under arrest, and poor accommodations for crime-detection technology, emergency operations, and other modern capabilities. When our public works and building departments outgrew their cramped space in the same facility eight years ago, they were moved into “temporary trailers,” and they are still there.

The conclusion: Our police/

administration building requires expansion or replacement.

In 1981, although plans were made and \$80,000 raised to add a children's section to our library, for various reasons it did not happen. Our library staff has put together many successful programs and presentations, which often draw more than 90 people, but there is no separate space for these activities. Our library, which operates on property tax dollars sent to us by the state, has built a reserve of over \$1.5 million. The funds are available to expand this beautiful building.

Another great opportunity could come Nov. 7 with the passing of Measure A, the one-eighth-cent county sales tax for parks. Measure A will generate \$205,000 per year for 25 years for our park, but cost the average Atherton household only about \$40 per year. Money to upgrade the Holbrook-Palmer Pavilion would make it competitive with neighboring reception halls (and generate more income for the town), retrofit the tennis courts, maintain the historic buildings, and modernize the irrigation of the fields and meadows.

Charles Marsala
Mayor of Atherton



SRI International
thanks
our **supporters** and
26,000 past and present
staff members
for **60 years** of
world-changing
innovations

Since November 6, 1946, one mission:
science and technology for knowledge, commerce, prosperity, and peace.



www.sri.com

Woodside



550 WHISKEY HILL ROAD

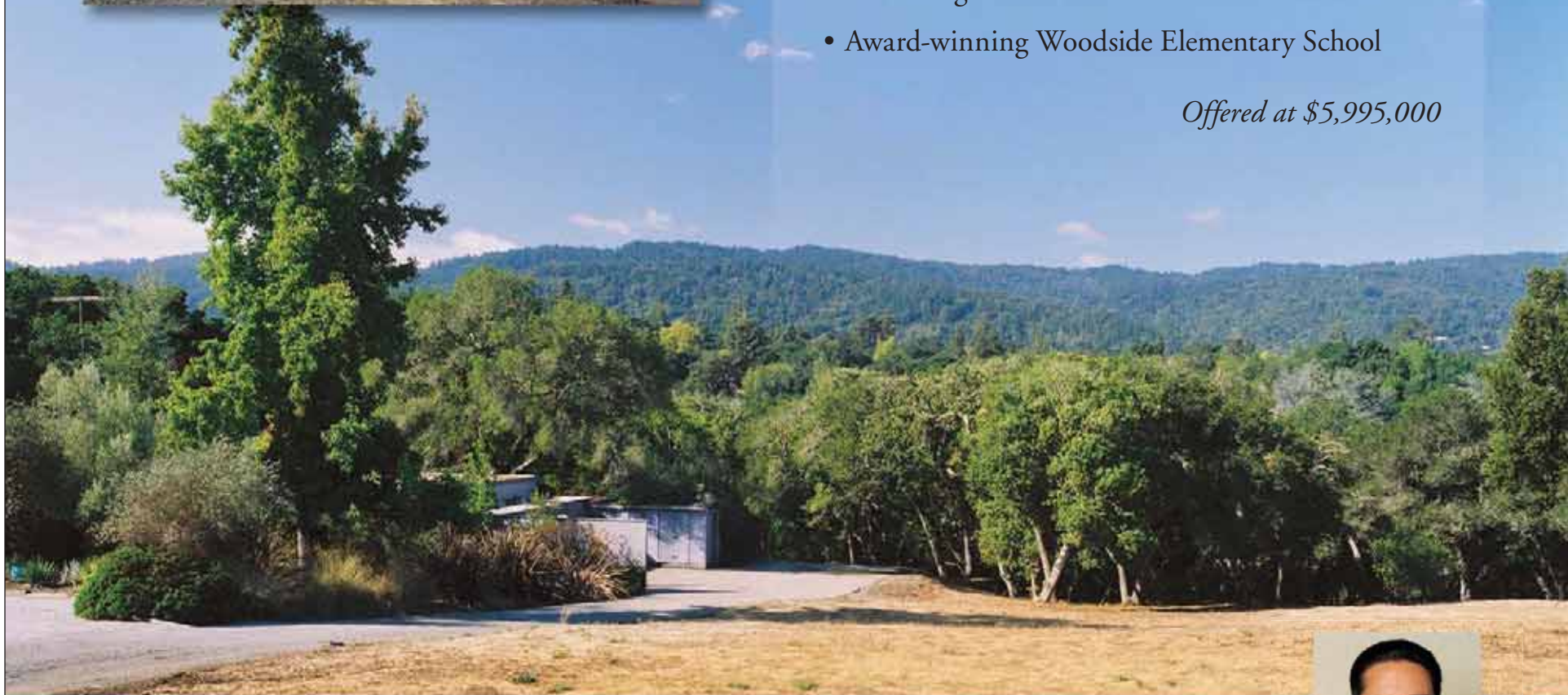


SPANNING APPROXIMATELY 4.6 ACRES of gently rolling meadows and groves of oak trees, this exceptional offering combines miles-away tranquility with close-in convenience. Woodside's building code for this large lot permits the construction of a new residence to the unusually generous scale of 8,000 square feet of living space. In addition to a main home, the construction of a basement, outbuildings, tennis court, swimming pool, and other estate amenities are allowable up to a maximum development area of 18,000 square feet.

HIGHLIGHTS OF THE PROPERTY

- Approximately 4.6 acres of gently rolling meadows and oak groves, featuring multiple sites suitable for new construction
- Maximum Floor Area (MFA) of 8,000 square feet
- Maximum Development Area (MDA) of 18,000 square feet
- Existing 5-bedroom, 4.5-bathroom residence
- Regulation-scale tennis court and barn are sold "as is"
- Excellent location just minutes from Woodside village and major commute routes
- Convenient to the exceptional equestrian facilities and riding trails of The Horse Park at Woodside
- Award-winning Woodside Elementary School

Offered at \$5,995,000



2969 WOODSIDE ROAD
WOODSIDE, CA 94062

 **SCOTT DANCER**

650-529-2454



Information deemed reliable, but not guaranteed.