

**SPORTS: M-A, Sacred Heart Prep advance to CCS football championships. Page 7**

# The Almanac

THE HOMETOWN NEWSPAPER FOR MENLO PARK, ATHERTON, PORTOLA VALLEY AND WOODSIDE



See  
Page  
**17**

DECEMBER 3, 2008

[www.TheAlmanacOnline.com](http://www.TheAlmanacOnline.com)

| VOL. 44 NO. 14

## Waiting it out . . .

**AS THE HOLIDAY SEASON LOOMS,  
LOCAL BUSINESSES HOPE FOR THE  
BEST IN A PRECARIOUS ECONOMY**

**[PAGE 12]**



# CASHIN COMPANY

MENLO PARK (650) 614-3500 ■ PORTOLA VALLEY (650) 529-2900 ■ WOODSIDE (650) 529-1000 ■ LOS ALTOS (650) 948-8050  
 PALO ALTO (650) 853-7100 ■ SAN CARLOS (650) 598-4900 ■ SAN MATEO (650) 343-3700 ■ BURLINGAME (650) 340-9688



**ATHERTON** – Beautiful custom home nestled on gorgeous large lot in sought after W. Atherton neighborhood. 5BR/4.5BA, elegant & spacious living and dining rms, epicurean kitchen w/large breakfast rm; incredible vaulted ceiling FR.

*Elizabeth Daschbach* \$6,995,000



**ATHERTON** – W. Atherton remodel or build new opportunity on large park-like setting lot w/expansive golf course views to the south and panoramic hillside views to the northeast. This is the proverbial diamond in the rough opportunity at the end of a cul-de-sac. Top rated Las Lomas School District.

*Steve Gray* \$2,495,000



**BELMONT** – Excellent location on Cul-de-sac street. Unbelievable views of the Bay. Large lot with huge potential to expand or build. Current structure has a full unfinished basement. Large Family Room with oak hardwood floors.

*Brendon Royer* \$829,950



**EAST PALO ALTO** – Golden opportunity in the "Hidden Willows!" Located West of 101, near both Menlo Park and the Four Seasons Hotel. Large lot with two 2BR/1BA Ranch units. Both units have their own 2-car garages. Detached garage, private and lots of off-street parking.

*Joe Carcione III* \$939,000



**HALF MOON BAY** – Spectacular views from this large lot! Complete with plans and permits. Planned "Green" home with separate, permitted unit over additional 2 car carport. Designed by award winning architect Ana Williamson.

*Katherine Clark* \$639,000

## ATHERTON

Gorgeous traditional brick estate home in desirable W. Atherton, on quiet cul-de-sac.

*Elizabeth Daschbach* \$4,995,000

## EAST PALO ALTO

Bright corner unit, new double paned windows, freshly painted inside & out.

*Gordana Wolfman* \$268,888

## HAYWARD

2 separate homes on a large lot. Front unit is 3BR/3BA. Rear unit is 2BR/2BA.

*Gordana Wolfman* \$575,000

## LA HONDA

Prop. has 3 structures, a main, barn & a studio to be permitted by the new owners.

*Gary Mckae* \$599,000

Great value in La Honda! Close to Woodside & 280. Charming cottage with a large level rear garden.

*Cristina Harper* \$399,500

## LOS ALTOS

Charming 2BR/2BA cul-de-sac location backs onto creek. Huge \$100,000 price reduction!

*Carol Christie* \$1,275,000

## LOS ALTOS HILLS

Price Reduction! Lovely 4BR/3BA property on designated scenic route adjacent to Hidden Villa.

*Clarke Team & Nadine Matityahu* \$1,499,500

## MENLO PARK

Located in the desirable Allied Arts this 5BR/3.5BA home is surrounded by cottage-style gardens.

*Doyle Rundell* \$3,149,000

This classic 4BR/3BA ranch-style home is located on one of the nicest streets in central Menlo Park.

*Steve Gray/Tim Kerns* \$1,850,000

Prime W. Menlo on Atherton border. Large home with space for in-law unit or au pair quarters.

*Maureen Love* \$1,850,000

Gorgeous tastefully remodeled light & bright 2BR/2BA condo with garage.

*Suzanne Scott* \$758,000

## MOUNTAIN VIEW

Duplex in desirable area, close to Sylvan Park. 3BR/2BA beautifully remodeled.

*Marta Hayes* \$1,180,000

## MOUNTAIN VIEW

Charming 3BR/2BA home blocks away from Castro St! Located on a quiet street across from a park.

*Kristin Cashin* \$925,000

3BR/2BA home in Santiago Villa, open floor plan, breakfast bar, island kitchen.

*Cristina Page* \$155,750

## REDWOOD CITY

Live in the Country! This 3BR/2.5BA home is located next to Handley Rock Park.

*Dana Cappiello* \$1,198,000

Light bright & spacious 3BR/2.5BA private end unit. Steps away from boat dock.

*Lilly Chow* \$749,000

Inviting 3BR/1.5BA home located on a peaceful tree-lined street. Hardwood floors, new paint.

*Jennifer Whelan* \$649,000

Large 3BR/2.5BA Mediterranean styled townhome with large fenced patio area. Quiet location.

*Dana Cappiello* \$598,000

Remodeled 3 Bedroom, 2-1/2 Bath, Tile & Hardwood Floors, New Landscaping.

*Vivian Vella* \$549,000

This spacious 3BR/2BA Condo has newer double pane windows, sliding doors & kitchen appliances.

*Brendan Royer* \$469,950

Perfectly maintained, this 2BR/1BA condo is ready to move into!

*Dana Cappiello* \$399,000

## SAN JOSE

Santana Row model unit with many upgrades! Designer paint, carpet, appliances. Floor to ceiling window.

*Camille Eder* \$788,000

## WOODSIDE

Beautiful 3BR/2BA home in central Woodside on a large lot. Main home has brand new BA's, Living Room & Dining Room & in law unit.

*Dana Cappiello* \$1,998,000

This beautifully remodeled, 3BR/2BA home is situated on a lushly landscaped lot near downtown Woodside.

*Ken & Carol Reeves* \$1,799,000

Beautiful large lot in central Woodside.

*Dana Cappiello* \$899,000



**MENLO PARK** – Impeccably maintained 4BR/2.5BA Rancher. This property exhibits pride of ownership, style, grace and elegance. Thoroughly refurbished from 2004 to the present.

*Gary McKae* \$1,995,000



**MENLO PARK** – Desirable 3BR/2.5BA town home in sought after Menlo Park complex. Dramatic vaulted ceiling in living room with wall of windows overlooking the rear patio and lovely common gardens. Close to shopping & downtown. Top MP schools.

*Elizabeth Daschbach* \$1,189,000



**REDWOOD CITY** – Gracious 4BR/3.5BA open family style home. Home is light and bright. With bucolic gardens, pool and expansive decking this property unites all the best in Real Estate.

*Nino Gaetano* \$2,295,000



**SAN CARLOS** – Stunning unobstructed views from this fabulous updated home. Remodeled Kitchen w/ custom built-ins, master suite features remodeled BA & walk-in closet. Fresh paint & new carpet. Canyon/Bay views from almost every rm in the house! Custom built deck & lrg attached 2 car garage.

*Debbie Lorell & Bob Johnston* \$1,398,000



**SUNNYVALE** – Great corner lot location in this Cherry Chase neighborhood. This beautiful 4BR/3BA home is ready to move into, but still has tons of potential. Added bonus is a huge second living unit with 2 additional BR's, Living Rm and Kitchenette.

*Dana Cappiello* \$1,280,000

Selling Northern California's Finest Properties



cashin.com

# Inside

This week's news, features and community events.

## FIRST SHOT



Photo by Danielle Vernon/The Almanac

### Don't add water

In this demonstration, a firefighter from the Menlo Park Fire Protection District shows the effect of one cup of water tossed on a deep-fat turkey fryer that had ignited when oil overflowed onto its propane burner. The water vaporizes into a burning cloud when droplets merge with flaming oil particles.

## Menlo Park

- City to increase fees at children's center. **Page 9**
- City seeks comment on planned new gym. **Page 9**

## Woodside

- Town names new planning director. **Page 16**
- Owner of dog that attacked horse given leash-law warning. **Page 5**

## Regional

- County to weigh long-term permit for Horse Park. **Page 16**

## Police and fire

- Woodside resident reports interrupting home burglary. **Page 15**
- Fire guts home in Woodside Glens. **Page 8**

## Also Inside

- Calendar .....31
- Holiday calendar .....29
- Letters .....22
- Obituaries .....21
- Police Calls .....21

## Schools

- La Entrada School celebrates Blue Ribbon award. **Page 5**
- County superintendent wants to deny petition by Everest charter high school. **Page 5**

## Sports

- M-A gets second chance in CCS football **Page 7**
- Sacred Heart Prep shocks top seed to reach CCS final **Page 7**

## Food & Drink

- By popular demand: Local restaurateurs talk about the dishes they don't dare take off the menu. **Cover, Section 2**

## On the cover

A woman gazes through the window of Quintessence, an antiques store in downtown Menlo Park. The city's independent shop owners hope to attract shoppers this holiday season despite turmoil in the economy. Photo by Danielle Vernon. See story, **Page 12**.

## CALLING ON THE ALMANAC

The Almanac offices are at **3525 Alameda de las Pulgas, Menlo Park, CA 94025**.

For Classified ads, call **854-0858**  
For all other calls, phone **854-2626**

News: **Ext. 213**

Display advertising: **Ext. 233**

Fax: **854-0677**

■ E-mail news, information and obituaries to (no photos please): **editor@AlmanacNews.com**

■ E-mail news photos with captions to: **AlmanacNews@gmail.com**

■ E-mail letters to the editor to: **letters@AlmanacNews.com**

**THE ALMANAC** (ISSN 1097-3095 and USPS 459370) is published every Wednesday by Embarcadero Publishing Co., 3525 Alameda de las Pulgas, Menlo Park, CA 94025-4455. Periodicals Postage Paid at Menlo Park, CA and at additional mailing offices. Adjudicated a newspaper of general circulation for San Mateo County, the Almanac is delivered free to homes in Menlo Park, Atherton, Portola Valley and Woodside. Voluntary subscriptions for \$30 per year or \$50 per 2 years are welcome from residents of the above circulation area. Subscription rates for businesses and for residents of other communities is \$50 per year and \$80 for two years. POSTMASTER: Send address changes to the Almanac, P.O. Box 7008, Menlo Park, CA 94026-7008. Copyright ©2006 by Embarcadero Publishing Co., All rights reserved. Reproduction without permission is strictly prohibited.

To request free delivery, or stop delivery, of The Almanac in zip code 94025, 94027, 94028 and the Woodside portion of 94062, call **854-2626**.

BREE VAIL  
650-326-6447  
bree.vail@gmail.com



Still horsing around in Woodside...

But **NOW** hairstyling in Menlo Park!

Specializing in Gentleman's, Executive Haircuts and Managing Fearful Children  
Certified color tech  
Event Hairstyling Available

### MASTER STYLING

A family-friendly full-service salon

1030 Curtis Street, Menlo Park • Across from Trader Joes



## Menlo School

Why Menlo School? Come Find Out.

Middle School Open Houses: 12/4/08 6:30 pm  
Upper School Open Houses: 12/7/08 1:00 pm

Menlo School is an independent coeducational school serving 750 students in grades six through twelve. We offer a rigorous, engaging, academic curriculum complemented by outstanding creative arts and athletics programs.



50 Valparaiso Avenue, Atherton, CA 94027 • 650.330.2000 ext. 2600

[www.menloschool.org](http://www.menloschool.org)

## ACTIVE LIVING Q&A

### The Beauty of Fruits & Veggies

**Q:** How can I turn eating fruits and vegetables into a habit?

**A:** Color matters. I start by adding at least three colors of fruits and vegetables twice a week to my grocery cart. Eating a variety of colors everyday is the way I assure I am scooping up these really rich nutrients and vitamins to keep my body well balanced and healthy.

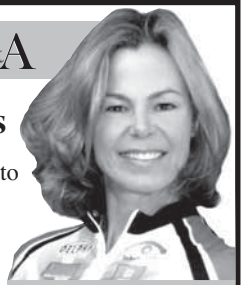
These are five easy steps to creating a new habit:

- 1st Step:** As soon as I return from the market, I wash all fruits and vegetables.
- 2nd Step:** Cut and chop all vegetables, doesn't need to be perfect.
- 3rd Step:** Set aside three plastic produce bags or zip lock bags (Sun-Tues or Wed-Sat.)
- 4th Step:** Fill each plastic bag with an assortment of color.
- 5th Step:** Store in crisper to maintain freshness.

Pull out a bag of vegetables every night of the week, steam, add to soups, casserole or stir fry. Teach you and your family to start by eating your vegetables first, this sets up a healthy tone for the rest of your dinner. Put fruit in a large bowl in view on kitchen counter so it's easy to grab for morning snack and after dinner sweet treat.

### By Jackie Ballinger, CEO Physically Focused

Consultant to Corporations, Medical Practices, Individuals, Families and Public Services • 650-851-2705  
[www.physicallyfocused.biz](http://www.physicallyfocused.biz) • [Physicallyfocused@sbcglobal.net](mailto:Physicallyfocused@sbcglobal.net)



A TOWN MARKET PLACE

# ROBERTS MARKET

SINCE 1889

3015 Woodside Road Woodside, 650-851-1511  
 4420 Alpine Road Portola Valley, 650-851-1711  
 Open 6:30AM - 8PM

Sale Dates: DEC 3, 4, 5, 6

www.robertsmarket.com

## Roberts Tip of the Week

### *A Red that Defies Expectations*

If you think that red wines are heavy and only go well with meat, it is time you introduced yourself to Pinot Noir. This grape, which is chiefly associated with the Burgundy region of France, has found a home in America. While it was once thought that American vintners could not produce a Pinot Noir to rival the great Burgundies of France, Americans have found just the right areas for growing this finicky red grape. Pinot Noir prefers cooler weather, which is found in great abundance in both California and Oregon. These states produce consistently good wines that can be served chilled on hot days. They even possess a white-wine lightness and acidity that makes them perfectly suited to seafood.

Pinot Noir is a red wine that goes great with a seafood dish. At ROBERTS MARKET, we can help you find the perfect wine for any food, and occasion. Finding that wine that goes great with food is truly pleasurable, and really adds to the meal itself. In addition to being your local source for fine wines, we offer a wide variety of foods from all over the world. We are your source for specialty food, including Indian, Asian, European and other specialties. See you soon!

P.S. The fame that Pinot Noir gained in the movie *Sideways* propelled its sales more than 56 percent from 2004 to 2005.



## Wine

### *Pinot Noir - A World View*

*Pinot Noir, the noble red grape of Burgundy, is a difficult and finicky grape to cultivate successfully. It has taken decades for vintners from around the globe to figure out the best conditions and techniques for Pinot Noir to flourish. Here are a few examples that demonstrate how far Pinot Noir has come.*

**2006 Wolf Pinot Noir.** *Pfalz, Germany* \$12<sup>99</sup>  
 From the great Ernie Loosen comes this fresh, delicate, yet complete Pinot with fine mineral complexity. Reg. price \$14.99

**2007 Devil's Corner Pinot Noir, Tasmania** \$12<sup>99</sup>  
 A bright, fresh, spicy Pinot with surprising finesse. Reg. price \$14.99

**2007 A to Z Pinot Noir, Oregon** \$15<sup>99</sup>  
 A solid gutsy Pinot. Great Value. Reg. price \$17.99

**2006 La Crotta di Vegneron Pinot Noir, Valle d'Aosta, Italy** \$17<sup>99</sup>  
 A pure, transparent Pinot with pretty spice and a long finish. Reg. price \$19.99

**2002 Robert Arnoux Bourgogne Pinot Fin, Burgundy** \$21<sup>99</sup>  
 Pinot Fin means ancient, indigenous clones, not Dijon clones. This is a great wine from a great producer in a great year. Reg. price \$24.99

**2004 Rippon Pinot, Central Otago, New Zealand** \$44<sup>99</sup>  
 95 points - Wine Advocate! Reg. price \$49.99

Sale prices are net and do not qualify for further discounts.

## Fresh PRODUCE



Organic and Conventional  
**BANANAS**

**59¢** lb.

Sweet!

**TEXAS JUICE ORANGES**

**49¢** lb.

Clip Top

**LOOSE CARROTS**

**49¢** lb.

Large

**NEW RED POTATOES**

**59¢** lb.

Special this week at Roberts

## MEAT



**PETRALE SOLE**

**\$10<sup>98</sup>** lb.

**ORGANIC SCOTISH SALMON**

**\$15<sup>98</sup>** lb.

**GROUND CHUCK**

**\$3<sup>98</sup>** lb.

**CHICKEN WELLINGTON**

**\$6<sup>50</sup>** lb.

On Sale

## GROCERY



**HORIZON ORGANIC LIGHTLY SALTED BUTTER**  
 1 lb. Cubes - Also Unsalted

**\$4<sup>69</sup>**

**BEN & JERRY'S ALL NATURAL ICE CREAM**  
 Pints - Also Frozen Yogurt

**\$2<sup>79</sup>**

**NESTLES HOT COCOA MIX**  
 10 oz. - Also With Marshmallows

**\$1<sup>79</sup>**

**GOLD MEDAL ALL PURPOSE FLOUR**  
 5 lb. Bag - Also Unbleached - Self Rising

**\$2<sup>49</sup>**

**QUAKER OLD FASHIONED OATS**  
 42 oz.

**\$2<sup>99</sup>**

**FRISKIES CLASSIC CAT FOOD**  
 5 oz.

**49¢**

## DELI

### *Holiday Entertaining At Roberts*

**Fra Mani Campagnola Pate** \$13<sup>99</sup> lb  
 Artisan pate - one of the best pates we have tasted. Great for the holidays

**Capricho de Cabra/Spain** \$16<sup>39</sup> lb  
 Beautiful fresh goat cheese melts into a dreamy burst of flavor. Bake with olive oil and fresh herbs and serve on crusty baguette!! Easy for the holidays

**Dawn's Handmade Gorgonzola Torta** \$19<sup>99</sup> lb  
 Housemade layered with mascarpone with a hint of honey

We offer beautiful cheeses and party platters to make your holiday parties easy and elegant.



### London calling

Just in case Portola Valley residents needed reminding of the seismic beast that lives underground, The Times of London obliged.

A Nov. 14 story in the Times Online included this paragraph: "According to government estimates, the Big One will cause 1,800 deaths and about \$200 billion in damage. Towns such as Portola Valley, a community of 4,500 directly on top of one of the most dangerous sections of the San Andreas Fault line, will be ripped in two."

The story was about Southern California, but apparently that distinction gets a bit fuzzy when viewed from across the pond.

### The vote, it got out

No one can accuse San Mateo County residents of shirking their civic duty on election day. Election turnout for the county was 78 percent of registered voters — 305,655 ballots cast — according to unofficial results from the San Mateo County Elections Office.

### Down the drain

Atherton's drainage problems are many, from a high water table in some areas to a lack of storm drains. The town is conducting an online survey of residents to help pinpoint trouble spots throughout town. Anyone interested in highlighting neighborhood water woes may go online to [www.ci.atherton.ca.us](http://www.ci.atherton.ca.us) and click on the storm drain improvements topic under the "In the spotlight" heading.

### Chocolate Rain, anyone?

Tired of watching those hilarious YouTube clips in solitude in front of your computer? The Midpeninsula Community Media Center feels your pain. It's hosting a "YouTube Faves" night at 7:30 p.m. Tuesday, Dec. 9, promising 90 minutes of PG-rated short video clips on a big ol' flat screen TV. With popcorn! It's at 900 San Antonio Road, Palo Alto; RSVPs and suggestions for video clips can be e-mailed to [community@midpenmedia.org](mailto:community@midpenmedia.org). Admission is free, although donations for popcorn are accepted.

## La Entrada celebrates Blue Ribbon award

By Marjorie Mader

Almanac Correspondent

With fanfare and rousing applause, La Entrada School students, teachers, staff and guests assembled Nov. 21 to celebrate the school's national honor: being named a 2008 Blue Ribbon middle school by the U.S. Department of Education.

The grade 4-8 school is one of only five middle schools in California and 30 in the United States to receive the recognition this year.

Principal Larry Thomas welcomed some 640 students to the first all-school assembly held at a new gymnasium on the La Entrada campus, located at 2200 Sharon Road in Menlo Park. La Entrada is the fourth-through-eighth-grade school in the K-8 Las Lomitas School District.

"All of you have a part in making this a great school," Mr. Thomas told those assembled, who were wearing blue and white for the occasion. "Your passion for learning and teaching is the biggest ingredient that makes this a great place."



Photos by Marjorie Mader/The Almanac

**Students join** in rousing applause as they celebrate their school winning national honors during an all-school assembly in the new gym at La Entrada School in Menlo Park.

Pattie Dullea, La Entrada assistant principal for the past nine years, said the high standards set for students and teachers provide rigor and engagement for them on a daily basis.

She added: "It's cool to be kind here. It's cool to be smart and do your best, and it's definitely cool that La Entrada School has been honored as a Blue Ribbon school."

Eric Hartwig, superintendent of the Las Lomitas district, congratulated students and teachers for doing "extremely well aca-

See **LA ENTRADA**, page 8

## Owner of dog that attacked horse given leash-law warning

By Dave Boyce

Almanac Staff Writer

A warning about San Mateo County's leash laws is the extent of the sanction handed down by the Peninsula Humane Society to the owner of a pit bull dog that reportedly jumped up and bit a Woodside horse on the neck then hung there by its teeth until the horse shook it off.

In determining a penalty for the Nov. 15 attack on Phillip Road that resulted in Woodside equestrian Chiyoko Ono falling off the horse, the Humane Society's considered the severity of the horse's injury and the dog's behavior over time, spokesman Scott Delucchi said in a phone interview.

This dog had no history of biting, and the horse's wound was "minor" and "a single scratch," he said. "It seemed to be a single bite."

The Humane Society has three options available in the case of

dog attacks: a leash-law warning, a "dangerous dog" designation that includes posting warnings on the owner's property and restraining the dog on a short leash when taken for a walk, or a "vicious dog" designation that ends by euthanizing the dog.

Ms. Ono, who related the story of the attack to The Almanac, said she was bruised all over after falling from her horse Vader as he bucked and jumped in fending off the dog's attack.

The dog's owner had been visiting Woodside. The Humane Society also directed the property owner to fix a hole in a fence that allowed the dog to get out of the yard and attack the horse.

If Ms. Ono wants more compensation for the physical and emotional injuries to herself and her horse — Vader is now "very nervous" around dogs, she said — she can file a civil action in court, but the Humane Society's

See **DOG**, page 8

## Superintendent wants to deny petition by charter school

By Dave Boyce

Almanac Staff Writer

Another decision point is ahead for Everest, a proposed new charter high school in the Sequoia Union High School District.

Jean Holbrook, the San Mateo County superintendent of schools, is recommending that the county Board of Education deny the petition. The board meets at 7 p.m. Monday, Dec. 8, at 101 Twin Dolphin Drive in Redwood City to decide on whether or not to follow Ms. Holbrook's advice.

The Sequoia district board rejected the petition on Sept. 17 in a 4-1 vote, with Trustee Olivia Martinez dissenting. The trustees alleged that Everest lacked community support, had potential fiscal problems, and could create "racial isolation" by drawing white students away from other district charter schools in East Palo Alto.

Ms. Holbrook, in a Nov. 21

memo, alleged shortcomings that include Everest's handling of special education, its potential to misrepresent the diversity of the Sequoia district, and the opposition of "so many district staff and elected board of education members."

Everest would be modeled on Summit Preparatory Charter High School, a six-year-old Redwood City public school. School officials tout Summit's ethnic diversity, small classes, economy — Summit spends about \$2,000 less per year per student than the Sequoia district — and admission rates of over 95 percent to four-year colleges.

About a fourth of Summit Prep's current enrollment lives in The Almanac's circulation area.

Admission to Summit is by lottery when there are more applicants than space. For 2008-09, there are 300 applicants for each of the 100 freshman seats, and

See **CHARTER SCHOOL**, page 8

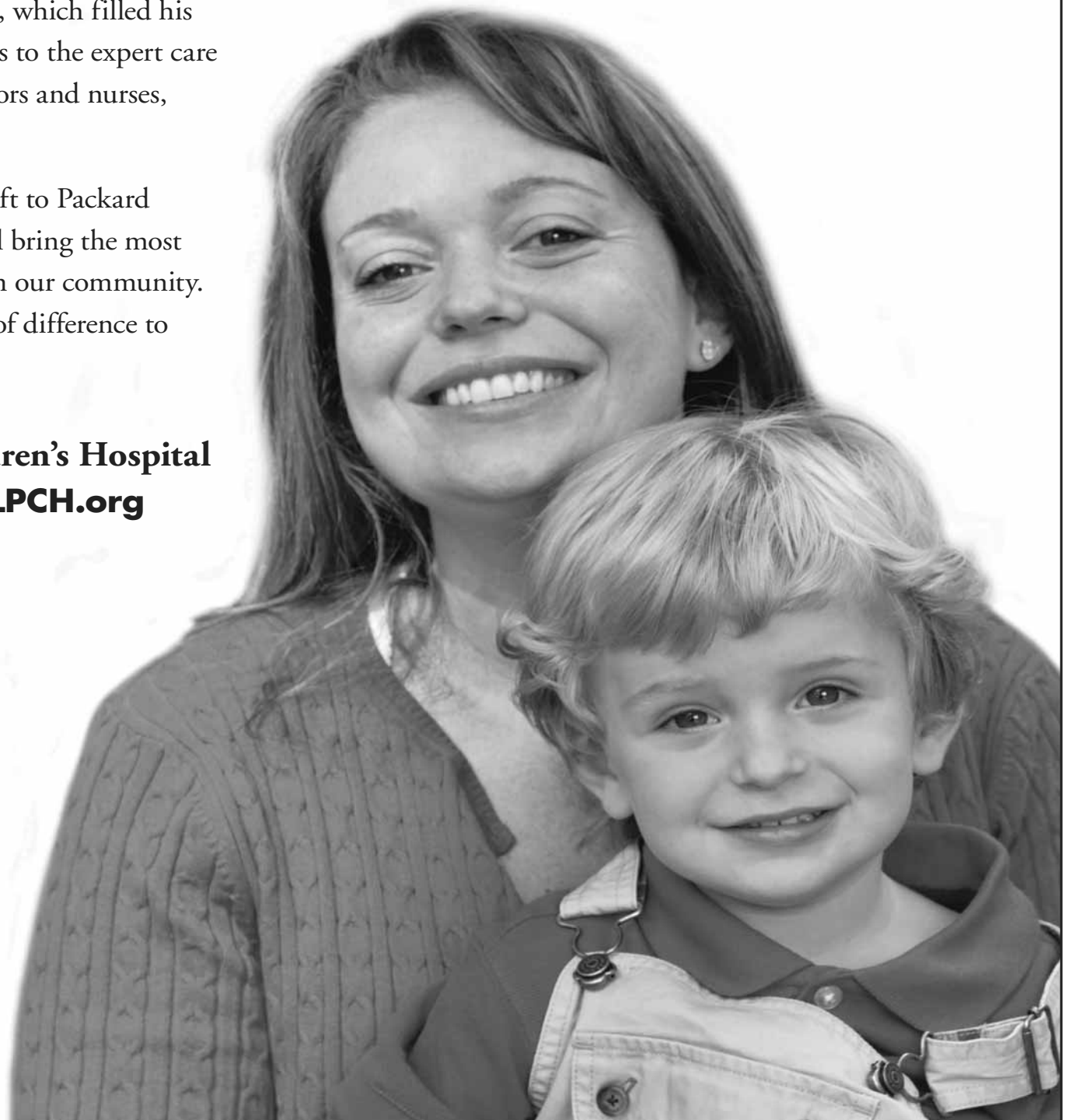
# Our Family Gives to Packard Children's Hospital...

## Because of the Gift it Gave to Us.

Our son, Alexander, was born with a near fatal condition known as hydrops, which filled his tiny body with fluid. Thanks to the expert care from Packard's team of doctors and nurses, Alexander's life was saved.

Please join us in making a gift to Packard Children's. Your support will bring the most advanced care to any child in our community. And that can make a world of difference to families like ours.

Support **YOUR** Children's Hospital  
Visit [www.supportLPCH.org](http://www.supportLPCH.org)



Lucile Packard  
Children's Hospital  
AT STANFORD



  
Lucile Packard  
CHILDREN'S FUND

SUPPORT **YOUR**  
CHILDREN'S HOSPITAL

## M-A gets second chance in CCS football

For the Menlo-Atherton football team, this year is all about last year when the Bears saw their sensational season end in a frustrating 14-7 loss to Palo Alto in the Central Coast Section Large School Division title game.

This season has been dedicated to those who missed out last year and to those who are trying to give the Bears their first section crown since 2002. It has been all about getting back to the CCS finals.

And now the Bears are there. Top-seeded Menlo-Atherton (9-2-1) will play for the CCS Large School Division title for the second straight year after holding off Woodside, 28-21, in two overtimes on Saturday night at Terra Nova High in Pacifica. The Bears will play No. 6 Wilcox (8-4) this Friday for the section title at Foothill College at 7 p.m.

The Bears used the strong legs

### SPORTS

of senior running backs Will Preston and Vaughn Smith into the overtime periods, then relied on some solid defense to clinch the thrilling victory — topping the finish of two weeks ago when the Bears drove 80 yards in under four minutes to score the winning TD to beat Woodside, 28-25.

Preston rushed for a career-high 160 yards on 10 carries, scoring on runs of 67 and 70 yards. Smith, who has a pair of 200-plus games this season carried 19 times for 150 yards. His big gainer was an 86-yard scoring run. Smith also scored on a 10-yard run in the second overtime period for the eventual winning points.

The game, however, goes down as a tie since the teams were deadlocked at 21 at the end of regula-

tion. A 20-yard scoring run by Woodside's Cory McDonald tied the game and sent it to overtime.

In overtime, each team get the ball and four plays from the opponents' 10-yard line. If neither team scores, a second overtime is needed.

That's what happened Saturday as both teams missed field goals in the first extra period.

In the second overtime, Smith ran it in from the 10 and then Woodside had four plays to tie or go for the win. Defensive tackle Stephen Fifita stopped the Wildcats' first play for a two-yard loss. Woodside's Jason Simpson gained just one yard on second down, McDonald misfired on a pass on third down and M-A's Chris Gow batted down a McDonald pass to end the game.

— Palo Alto Weekly sports staff

## SHP shocks top seed to reach CCS final

By Tim Goode

Palo Alto Weekly

In a season of "biggest football games in school history," Sacred Heart Prep on Friday won its biggest. And that allows the Gators the opportunity this week to play even a bigger big game, namely the Central Coast Section Small School Division championship game.

Sacred Heart Prep remained unbeaten and defeated top-seeded Scotts Valley in the semifinals of the CCS Small School playoffs, 28-24, on Friday at Westmont High to earn a spot in this week's championship game.

Prep improved to 11-0-1 and will play against Sacred Heart Cathedral for the title at 3 p.m. Saturday at San Jose City College. Scotts Valley, the Santa Cruz County Athletic League champion, ended its season 10-2.

Quarterback Ryan Sakowski and a timely, opportunistic defense were the difference in Sacred Heart's victory.

Sakowski, a three-year varsity starter, saved the best game of his career for the most crucial game of the season. Sakowski completed eight of 11 passes for 193 yards and a touchdown and rushed for 43 yards and another

touchdown to guide the Gators to the triumph.

Sakowski also converted two fourth-down situations into a first down and a touchdown with quarterback sneaks on Sacred Heart's game-winning drive in the fourth quarter. That 67-yard drive that ate 5:10 of the final period and accounted for the game's final points.

Equally important to the offensive output, Sacred Heart for the second straight week avoided turnovers.

"Sakowski did a great job," said Sacred Heart Prep coach Pete Lavorato. "He's an amazing kid. Right from when he started as a sophomore I knew we had something special. He's very competitive and he's done everything I've asked of him all year. Today was a microcosm of his play all season."

While Sacred Heart was error free, the Gator defense forced the Falcons into two miscues, both pivotal to the outcome.

On Scotts Valley's first play from scrimmage, defensive back Chris Gaertner stripped the ball from the arms of running back Kyle Hardwick and returned it 19 yards to the Scotts Valley 19. Five plays later, Matt Bocci danced into the end zone from the two

for the first score of the game.

The second turnover came in the fourth quarter after Sakowski's touchdown. Scotts Valley had used its possessions in the second half to let Hardwick attack the Gator defense. Hardwick gained 133 yards and scored two touchdowns on both of the Falcons' possessions in the third quarter on the way to a 31-carry, 242 yard performance. Hardwick ran five times for 43 yards, and coupled with a 24 yard pass, Scotts Valley was third and 4 at the 4. Falcon quarterback Blake Jurich tried to pass but linebacker JJ Suttle chased him into an off-balance throw that Chris Cummings picked off in the end zone with 3:01 remaining.

The defense needed one more stop after Sacred Heart went three-and-out while Scotts Valley exhausted its timeouts. With 2:34 remaining and the ball at its own 42, the Falcons needed a touchdown. They drove to the 28 where ultimately they faced a fourth and 10. A double pass play from wide receiver Aldin Barrett back to Jurich was stopped a yard shy of the first down with 1:30 left.

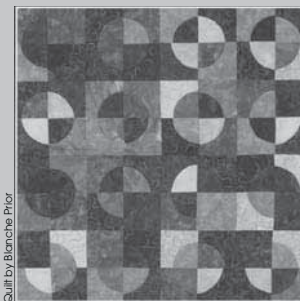
The defense allowed 483 yards, but made the key plays that thrust Sacred Heart into December. ■

Middle School, is a sophomore at West Valley College in Saratoga.

■ Grant Villeneuve of Atherton earned all tournament laurels in helping Deerfield Academy, a collage preparatory school in Deerfield, Massachusetts, to its second consecutive New England Boys' Water Polo Tournament championship. The Big Green

beat Choate Rosemary Hall 6-3 in the championship game on Nov. 8. Villeneuve, who previously attended Sacred Heart in Atherton, is a junior at Deerfield.

**For more sports news and pictures, go to [TheAlmanacOnline.com](http://TheAlmanacOnline.com)**



the  
*artifactory*  
COOPERATIVE

## HOLIDAY FAIR

Fine Crafts ♦ Local Artists

**December 12, 13, 14, 2008**  
**Friday, Saturday & Sunday 10-5**

Hoover House (aka "The Girl Scout House")

1120 Hopkins, Palo Alto

For Information:

**650-625-1736 or [TheArtifactory@aol.com](mailto:TheArtifactory@aol.com)**



### NOTICE OF PUBLIC MEETING AND NOTICE OF PUBLIC HEARING CITY OF MENLO PARK PLANNING COMMISSION MEETING DECEMBER 15, 2008

NOTICE IS HEREBY GIVEN that the Planning Commission of the City of Menlo Park, California, is scheduled to review the following items:

#### PUBLIC HEARING ITEMS

**Use Permit, Architectural Control, and Variance/Carl Hesse/800 Live Oak Avenue:** Request for a use permit and architectural control to demolish two detached residences and to construct three attached single-family residences and a detached garage on a standard lot in the R-3 (Apartment) zoning district. In addition, a request for a variance to reduce the required separation between the main buildings on the subject lot and the main building on the adjacent left side property from 20 feet to 15 feet, three inches.

**Use Permit and Architectural Control/Acclarent, Inc./1555 and 1605 Adams Drive:** Request for a use permit for the indoor use and storage of hazardous materials for research and development (R&D) and production purposes in the M-2 (General Industrial) zoning district. In addition, a request for a use permit and architectural control to construct additions of approximately 125 square feet at each of the front entries of the two buildings for a total of approximately 500 square feet.

**Use Permit/Acclarent, Inc./1525 O'Brien Drive:** Request for a use permit for the indoor use of hazardous materials for research and development (R&D) and production purposes in the M-2 (General Industrial) zoning district. The hazardous materials would be stored both inside the main building and in an existing, fully-enclosed accessory structure designed for hazardous materials storage. In addition, a request for a use permit to construct a new mezzanine of approximately 1,020 square feet.

#### STUDY MEETING ITEMS

**Architectural Control and Environmental Review/City of Menlo Park/600 Alma Street:** Proposal to demolish the existing gymnasium and gymnastics building and construct a new 18,700-square-foot gymnastics facility at the location of the existing gymnasium and gymnastics building, and a new 26,900-square-foot gymnasium in an area of the park between the existing Recreation Center and Alma Street.

#### PUBLIC MEETING ITEMS - None

**NOTICE IS HEREBY FURTHER GIVEN** that said Planning Commission will hold a public hearing on public hearing items in the Council Chambers of the City of Menlo Park, located at 701 Laurel Street, Menlo Park, on Monday, December 15, 2008, 7:00 p.m. or as near as possible thereafter, at which time and place interested persons may appear and be heard thereon. If you challenge this item in court, you may be limited to raising only those issues you or someone else raised at the public hearing described in this notice, or in written correspondence delivered to the City of Menlo Park at, or prior to, the public hearing.

The project file may be viewed by the public on weekdays between the hours of 7:30 a.m. and 5:30 p.m. Monday through Thursday and 8:00 a.m. to 5:00 p.m. on Friday, with alternate Fridays closed, at the Department of Community Development, 701 Laurel Street, Menlo Park. Please call the Planning Division if there are any questions and/or for complete agenda information (650) 330-6702.

Si usted necesita más información sobre este proyecto, por favor llame al 650-330-6702, y pregunte por un asistente que hable español.

DATED: November 25, 2008  
PUBLISHED: December 3, 2008

Deanna Chow, Senior Planner  
Menlo Park Planning Commission

Visit our Web site for Planning Commission public hearing, agenda, and staff report information: [www.menlopark.org](http://www.menlopark.org)

Published in THE ALMANAC on December 03, 2008

## Owner of dog that attacked horse given leash-law warning

### DOG

continued from page 5

involvement is at an end, Mr. Delucchi said.

Ms. Ono could need to see a chiropractor and may want to seek redress for her troubles, but that's between her and the dog's owner, he said.

Police and/or the district attorney's office would get involved only if the case showed evidence of animal cruelty or intent by the dog's owner to cause harm, and neither has turned up in this case, Mr. Delucchi said.

Asked if he had noted the significance of the dog having gone for the horse's neck, Mr. Delucchi replied: "We took everything into consideration."

"Whatever we do, it's one of those no-win situations," he

added. "Especially with pit bulls, it seems to be one of those issues that's very polarizing."

Some people love pit bulls. They were a popular family dog at the turn of the 19th century, Mr. Delucchi said. Indeed, Petey, the dog with the black circle around its eye in the Little Rascals TV show, was a pit bull.

Other people hate them and want them "wiped off the face of the earth before they bite," he said.

Are they more dangerous in that once they bite, they lock their jaws and cannot be disengaged? "Everyone thinks that," Mr. Delucchi said, adding that while they do have a stronger bite capacity than any other breed and can do more damage when they bite, their jaws are not locked. ■

### LA ENTRADA

continued from page 5

demically" and earning the right to display the Blue Ribbon flag.

### Distinguished school

La Entrada was invited to participate in the U.S. Department of Education's Blue Ribbon School Program after being named a California Distinguished School, said Mr. Thomas.

The Blue Ribbon award was presented in Washington, D.C., in October to Ms. Dullea, and Su Logie, sixth-grade core teacher, who together wrote the 40-page application that cinched the award. Also present was Trustee Leslie Airola-Murveit, representing the Las Lomitas district school board.

During the Nov. 21 assembly, guest speaker Morgan Clyburn, a senior on the Stanford women's basketball team, advised students in a friendly way that now is the time to start setting goals — short-term and then long-term ones. When she was in the fourth grade in Woodlands, Texas, she decided she "wanted to play bas-

ketball in college somewhere."

She set short-term goals, such as practicing 100 free throws each day when she was in ninth grade and increasing the number each year.

"There can be setbacks along the way," admitted Morgan. She had foot surgeries last spring that has kept her off the basketball floor for six months.

"Not everything goes your way, but you have to find a way to get around it," she told the students.

"Most important is education and spending lots of time in the classroom," she said. "Sit down and think about what you want to accomplish in life, have lots of fun doing it, and enjoy it."

The program ended with a surprise for the teachers. Students came up to the speaker's stand and read a tribute — a paragraph, a poem (some serious, some humorous) — composed by the student for one of the school's 38 celebrated teachers.

La Entrada's seventh- and eighth-grade symphonic band, directed by Colin Cooper, livened up the event by playing "Fanfare for the Common Man" and "Chicago." ■

### CHARTER SCHOOL

continued from page 5

it may go as high as 500 by the time registration closes, Executive Director Todd Dickson said.

If the county board rejects Everest, the petitioners can apply to the state Board of Education. If either board approves the petition, the Sequoia district will be responsible for funds for

Everest's operating budget, and must offer facilities.

Everest would be governed by the nonprofit Summit Institute, whose chief executive, Diane Tavenner, headed Summit Prep for several years.

In an interview, Ms. Tavenner said she found the county's processing of the petition "very collaborative and very professional," and added that she did not see a basis in the report for Ms. Holbrook's conclusions. ■



Photo by Danielle Vernon/The Almanac

A firefighter works at the Glenwood Avenue home in Woodside that was seriously damaged by a fire Nov. 25.

## Fire guts home in Woodside Glens

By Dave Boyce

Almanac Staff Writer

A two-alarm fire all but destroyed an unoccupied house in the Woodside Glens neighborhood on the evening of Tuesday, Nov. 25.

"There was fire coming out of every window," Woodside Fire Protection District Battalion Chief Don Romero said of the two-story house at 232 Glenwood Ave. "It's pretty well destroyed."

A power line came down during the fire; there were no injuries reported. Firefighters took steps to protect a nearby house on Otis Avenue, but it was never seriously threatened, Mr. Romero said.

The house was on the market and "set up for show," Mr. Romero said. The home's sales agent, who lives across the street, told firefighters that she heard a smoke detector going off in the house, went over and discovered a fire in the kitchen, tried unsuccessfully to put it out and made the 911 call at 7:09 p.m., Mr. Romero said.

Firefighters arrived at 7:12 p.m.; a second alarm went out five minutes later. The fire was under control at 7:42 p.m., Mr. Romero said.

All told, there were 10 vehicles on the scene, including an ambulance. Assisting in putting it out were firefighters from Redwood City, Menlo Park, Belmont/San Carlos and San Mateo County, he said.

The current estimate of the loss is \$800,000, Mr. Romero said. The fire's cause is under investigation.

The Glens area is considered a high-risk area for wildfire, in which undergrowth ignites, climbs into the tree tops, and the fire spreads from tree to tree shedding embers that travel with the wind. This situation did not warrant a wildfire type of response, Mr. Romero said, thanks to weather conditions of low wind, cool temperatures and high humidity.

Had conditions been unfavorable, the presence of overhanging vegetation at the house could have been a problem. "There was certainly a potential for (wildfire)," Mr. Romero said. ■

## Gunshots fired near Menlo Park officers on DUI stop

Menlo Park police conducting a DUI traffic stop early Wednesday morning, Nov. 26, took cover after five to seven gunshots were fired in their vicinity.

Officers had just pulled over a suspected drunken driver in the area of Terminal and Modoc avenues around 1 a.m. when they heard several shots fired about 100 feet north of the intersection, police said.

The officers took cover and called for backup. Additional officers arrived and set up a

perimeter. However, they were unable to determine if someone was aiming for them or if the shots had coincidentally been fired nearby.

Police spotted five people standing in the front yard of a nearby house, and officers detained them for questioning. A search of that home did not yield anything suspicious, police said.

No weapons or bullet shell casings have been found.

One man, Menlo Park resident Moses Vaenuku, 36, allegedly

ran from police and was later arrested for failing to obey police and fleeing the scene.

Another Menlo Park resident, 26-year-old Jim Pomale, was arrested on suspicion of DUI, police said.

An investigation into the shooting is ongoing and anyone with information is asked to contact police at 330-6300 or call the tip line at 330-6395.

— Bay City News Service



LSA Associates Inc.

Arist's rendering of the proposed new Burgess Gym. The street in the foreground is Alma.

## City seeks comment on new gym

The city of Menlo Park is soliciting feedback on what topics should be addressed in an environmental review for the proposed construction of a new 26,900-square-foot Burgess Gymnasium.

The gym, to be built with funds from the city and from donor John Arrillaga, would be constructed on a parcel between Alma Street and the Burgess Recreation Center. The city would pay \$6.2 million, with Mr. Arrillaga covering the rest of the costs, estimated to be \$8 million.

The existing gym, between Burgess Park and Laurel Street,

would be demolished and replaced with an 18,700-square-foot gymnastics center.

The environmental review will focus on the issues of transportation, traffic circulation and parking, and might include other areas of concern raised by the public, according to the city. The city will take written comments from the public until Jan. 5.

The Planning Commission will also hold a "scoping session" on Dec. 15 to receive input on which topics should be addressed. The meeting will take place at 7 p.m. in the council chambers, between Laurel and Alma streets.

The city has released an initial study prepared by a consultant, analyzing potential environmental impacts. That study, as well as the notice of preparation of the environmental impact report, can be accessed at [www.menlopark.org/gym](http://www.menlopark.org/gym).

Comments on which topics should be studied in the environmental review process can be sent via e-mail to engineer Lawrence M. Johmann at [lmjohmann@menlopark.org](mailto:lmjohmann@menlopark.org), or to the following address: City of Menlo Park / Engineering Division / 701 Laurel St. / Menlo Park, CA 94025.

## City to increase fees at children's center

By Sean Howell  
Almanac Staff Writer

Some parents of students at the Menlo Children's Center will see an increase in fees, but not at the 7 percent rate recommended by city staff to the Menlo Park City Council at its meeting on Tuesday, Nov. 25.

Instead, the council voted to approve a 5 percent fee hike for the center's preschool program. The new rate will go into effect on Jan. 1, according to a letter sent to parents by the city. Fees for the 50 children enrolled in the preschool program will increase by \$57 per month, and fees for the program's six toddlers will jump by \$72, accord-

ing to city staff.

The council decided not to raise fees for the 103 students enrolled in after-school care at the center, as recommended by staff, because the city currently recoups all of its cost from that program, according to a report by a consultant the city hired to assess the cost of city services.

"I don't think we should be subsidizing one program with another," Councilman Heyward Robinson said, noting the discrepancy in cost recovery between the preschool and after-school programs. According to the consultant's report, the city currently recovers 63 percent of the cost of running the preschool.

Council members decided to table steeper increases recommended for new part-time students until the council considers a new fee schedule for the 2009-2010 fiscal year.

Councilwoman Kelly Ferguson dissented in the 4-1 vote, saying that she feared raising fees in a time of economic turmoil would unfairly burden working mothers who might be forced to stay at home with their kids if their families can't afford the higher price. Several parents made the same argument at the meeting and in a flurry of e-mails to the council log, saying that the hike might force one of the parents in two-income households to stay at home. ■

## A very German holiday in Menlo Park

The German American International School in Menlo Park opens its doors to the community for its traditional St. Nicholas day holiday celebration from 2 p.m. to 5 p.m. Saturday, Dec. 6.

The students will perform traditional songs and children can participate in making tradi-

tional holiday crafts. A cafe will be set up in the gym, and there will be a bake sale and the small holiday bazaar, according to Monika Aeschbacher, member of the school's staff.

Saint Nicholas, the Bishop of Myra, is believed to fill the boots of good children with presents,

while his helper Knecht Ruprecht threatens to punish naughty children, according to German and Swiss tradition. Ms. Aeschbacher promises that children attending the festivities will have nothing to fear.

Admission is free. The school, which is celebrating its 20th anniversary this year, is located at 275 Elliott Drive in Menlo Park. Call 324-8617 for information.

## TOWN OF PORTOLA VALLEY



### NOTICE OF A PUBLIC HEARING ON A NEW SUSTAINABILITY ELEMENT OF THE TOWN OF PORTOLA VALLEY GENERAL PLAN AND NOTICE OF PUBLIC REVIEW PERIOD OF PROPOSED NEGATIVE DECLARATION FOR ADOPTION OF THESE MATTERS

**NOTICE IS HEREBY GIVEN** that the Planning Commission of the Town of Portola Valley will hold a public hearing on the proposed new Sustainability Element of the Town of Portola Valley General Plan on Wednesday, December 17 2008 at 8:00 p.m. in the Town Council Chambers (Historic Schoolhouse), 765 Portola Road, Portola Valley, California. The Planning Commission will consider all evidence, written and oral communications pertaining to the proposed Element. All interested persons are invited to appear before the Planning Commission to be heard at the time and place herein above mentioned.

**NOTICE IS HEREBY GIVEN** that a proposed Negative Declaration regarding the above mentioned Sustainability Element has been prepared and is available for review. The Planning Commission will consider the proposed Negative Declaration at its meeting of December 17, 2008 at 8:00 p.m., in the Town Council Chambers (Historic Schoolhouse), 765 Portola Road, Portola Valley, California. Comments may be submitted in writing prior to the Planning Commission meeting or presented at the meeting. All interested persons are invited to appear before the Planning Commission at the time and place herein above mentioned at the time and place which will be noticed. Copies of the proposed Negative Declaration are available at Portola Valley Town Hall, 765 Portola Road, Portola Valley, California.

Dated: November 25, 2008

Leslie A. Lambert  
Planning Manager

Published in THE ALMANAC on December 3, 2008



**TOWN OF ATHERTON  
ADMINISTRATIVE OFFICES  
91 ASHFIELD ROAD  
ATHERTON, CALIFORNIA 94027  
650-752-0500  
FAX 650-688-6528**

## NOTICE OF PUBLIC HEARING

**NOTICE IS HEREBY GIVEN** that the Atherton Planning Commission will hold a public hearing to review an Ordinance regarding a Comprehensive Zoning Code Update for the Town of Atherton.

The proposal has been determined to be exempt from the provisions of the California Environmental Quality Act (CEQA) pursuant to CEQA Sections 15061 (B)(3).

**NOTICE IS FURTHER HEREBY GIVEN** that said application is set for hearing by the Planning Commission at its regular meeting on December 3, 2008 at 6:00 P.M. in the Town Hall of the Town of Atherton, at which time and place all persons interested may appear and show cause, if they have any, why the Ordinance should not be approved.

**IF YOU CHALLENGE** the Ordinance in court, you may be limited to raising only those issues you or someone else raised at the public hearing described in this notice, or in written correspondence delivered to the Planning Commission at, or prior to, the public hearing.

For further particulars, reference is made to the Zoning Code Update on file. If you have any questions or need additional information, please contact Lisa Costa Sanders, Deputy Town Planner at [lcostasanders@ci.atherton.ca.us](mailto:lcostasanders@ci.atherton.ca.us) or 650-333-0248.

Any attendee who wishes accommodation for a disability should contact the City Clerk at (650) 752-059 at least 48 hours prior to the meeting.

**Date Posted:** November 21, 2008

ATHERTON PLANNING COMMISSION  
Lisa Costa Sanders, Deputy Town Planner

Published in THE ALMANAC on December 3, 2008.



## Get Help

### In these tough times, seniors can turn to Avenidas for:

- ◆ Free reverse mortgage counseling
- ◆ Free health insurance counseling
- ◆ Free tax assistance
- ◆ Free consultation with legal service
- ◆ Free information & assistance
- ◆ Free 1/2 hour counseling session
- ◆ Free loans of durable medical equipment
- ◆ Free support groups
- ◆ Free nutrition consultations
- ◆ Free health screenings

Call (650) 289-5400 or visit [www.avenidas.org](http://www.avenidas.org)



## Heyward Robinson in line to be MP mayor

Councilman Heyward Robinson is in line to become the city's new mayor Tuesday, Dec. 2, when the council appoints the new mayor and mayor pro tem for the coming year at its annual reorganization meeting.

The mayor serves as chairman of the council — but still has only one vote — and the mayor pro tem serves in the mayor's absence. The titles are usually rotated among council members based on seniority and whether they have held the position previously.

The council meeting is scheduled to begin at 7 p.m. in the council chambers in the Civic Center.

Councilman Rich Cline is expected to be chosen by the council to replace Mr. Robinson as mayor pro tem.

The meeting will be followed by a reception at the Gatehouse, located at 555 Ravenswood Ave.

near Alma Street. The public is invited and refreshments will be served.

On Friday, Dec. 5, the council will hold a special meeting in the Burgess Recreation Center at 8 a.m. to set goals for the upcoming year.

### Activity guide

The Community Services Department has released an activ-

### ■ MENLO WATCH

ity guide, covering classes for young people, adults and seniors from December to June. The guide also includes information on the Burgess Pool, social services, activity registration information, and more. It's available at [tinyurl.com/winterguide](http://tinyurl.com/winterguide).

## Steep increase in MP planning fees

Menlo Park residents looking to take out a development permit or appeal a planning department decision will see steep increases in fees for those services, in light of a City Council decision to approve staff recommendations for an updated fee schedule for planning services at its Nov. 25 meeting.

Under the new schedule, the

city will recover an estimated 99 percent of its costs for planning services that have fees associated with them, according to Community Development Director Arlinda Heineck — up from the current level of 51 percent.

The new fee schedule for city services across the board is expected to yield about \$1 million more in annual revenue for the city, according to Financial Director Carol Augustine — \$600,000 of which will come from the higher planning service fees alone.

Ms. Heineck attributed much of the increase to a new rubric the planning department has adopted to more accurately calculate fees, incorporating more of the "overhead." As a result, she estimates that hourly billing rates for staff time on private development projects will increase by 16 to 20 percent. The value of deposits required for a number of planning services increased sharply in order to better reflect the actual cost of those services, Ms. Heineck said.

A number of flat fees have also jumped. Residents looking to appeal a decision by either planning staff or the Planning Commission will pay \$110, up from the current \$15.

The cost to have the city conduct property research will double, from \$100 per hour to \$200. The legal fee to write deed restrictions into a property's title will jump to \$950, from the current \$200. The city will also charge \$400 for every zoning compliance letter it sends, up from \$150, and \$6,000 to prepare a tentative subdivision map, up from \$1,650.

The staff report mistakenly pegged the new cost recovery estimate for planning services at 63 percent, a fact that also resulted in a miscalculation of the overall revenue to the city. Ms. Augustine corrected the error at the Nov. 25 council meeting.

## We expect the best



And so should you, especially when it comes to your health. At the Palo Alto Medical Foundation, we understand that your body is special, and that your needs change with the different phases of your life. Our Portola Valley Women's Health Center offers:

- Board Certified Obstetrics & Gynecology specialists
- Same-day appointments
- The latest Fertility treatment options
- Lab and Ultrasound on-site
- Convenient neighborhood location
- Easy access from 280 and ample parking

Our physicians approach patient care as a long-term partnership, and are committed to treating you with compassion and to being there when you need us. To learn more, visit [pamf.org/portolavalley](http://pamf.org/portolavalley).

Portola Valley Women's Health  
3250 Alpine Road  
Portola Valley, CA  
(650) 851-6650



### Obstetrics & Gynecology

Diana Aung, M.D.  
Kaytha Clawson, M.D.  
Laurie Karl, M.D.  
James W. McCarrick III, M.D., PhD  
Winona Tan, M.D.

### Fertility

Lillian Marie Swiersz, M.D.  
Salli Tazuke, M.D.



Palo Alto Medical  
Foundation

A Sutter Health Affiliate

Portola Valley Center

THE CURE FOR COMMON MEDICINE

[pamf.org](http://pamf.org)

OPEN HOMES  
plus  
Interactive  
MAPS



HOMES for SALE  
plus  
Prior Sale Info  
& More

EXPLORE OUR NEW SITE  
[TheAlmanacOnline.com/real\\_estate](http://TheAlmanacOnline.com/real_estate)



# COME & CELEBRATE!

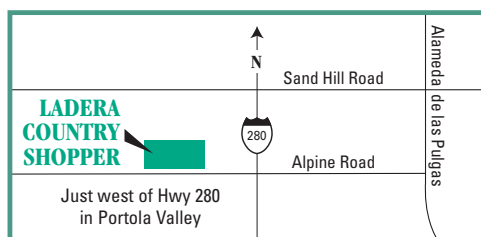


Santa is resting! He's getting ready for SANTA'S annual visit to



## THE LADERA COUNTRY SHOPPER MERCHANT'S CHRISTMAS FAIR

SATURDAY,  
DECEMBER 13<sup>TH</sup>  
11:30 AM – 1:00 PM



3130 ALPINE ROAD, PORTOLA VALLEY

Featuring:

### Santa at the Konditorei,

*with Photos by Susan Thomas*

- |                         |  |
|-------------------------|--|
| *Allegro Framing        | Kids picture-frame making for Santa photos |
| *Amigos Grill           | Piñatas                                    |
| *Bianchini's Market     | Matt's Famous Eggnog & Clam Chowder Bowls  |
| *Cashin Company         | Face Painting                              |
| *Dr. Greene & Dr. Madej | Games & Prizes for Kids                    |
| *Ladera Deli            | Make Your Own Ornaments                    |
| *Ladera Garden Center   | Bulb Planting with Kids                    |
| *The UPS Store          | Story Time with Milk & Cookies             |
| *Washington Mutual      | Cider and Cookies                          |
| *Red Lotus              | Balloon Artist                             |
| *Curves                 | Candy                                      |
| *Diane's Beauty         | Candy                                      |
| *Ladera Cleaners        | Candy                                      |

**... and MORE!!!**

— We want to thank our customers for their continued patronage during our remodeling. —



Photo by Danielle Vernon/The Almanac

On a recent afternoon at Golden Shears barber shop on Santa Cruz Avenue in downtown Menlo Park, barber Woody Jackson looks on while Carl Warden gets a haircut from Louie Arenas, who has been cutting Mr. Warden's hair since 1967. Mr. Arenas, the owner of Golden Shears, said that a recent rent increase might force his business to move.



Photo by Danielle Vernon/The Almanac

Mark Flegel, owner of Flegel's Furniture, said that his business seems to have been impacted less by the recent tailspin in the economy than those of other high-end furniture retailers.

the customers have a relationship with the salespeople she employs, and that she has no intentions of cutting back. She retained the entire staff when she bought the business three months ago, she said.

But Tony Draeger, co-owner of Draeger's Market, and Mr. Kepler both noted that, while they don't welcome

staff cuts, it represents the most straightforward to reduce costs.

#### Holiday prospects

Many local retailers are greeting the opening of the holiday season with crossed fingers. Carol Augustine, financial director for the city of Menlo Park, has called retail prospects "grim."

"The holiday season is the reason we're able to make it through the rest of the year," Mr. Kepler said. Early returns look hopeful, he said — customers have told him that the recent KQED broadcast of "Paperback Dreams," a documentary featuring his bookstore's struggle for survival in 2005, motivated them to come to the store.

Mr. Kepler said that booksellers have long believed the industry is "recession-proof" — that people still need to buy holiday-related gifts, and that books "retain their value" because they can be read and

a new potential location ever since.

"I've built up a lot of goodwill over the last 45 years," Mr. Arenas said, but "they didn't blink" at raising his rent.

#### Cutting costs

Mark Flegel, owner of Flegel's furniture on Santa Cruz Avenue, said that business had slowed recently, but that his operation seemed to be faring better than those of other high-end furniture retailers around the country — a fact Mr. Flegel attributed to the preponderance of wealthy Peninsula dwellers from which he draws his clientele.

Mr. Flegel said that he sees layoffs as a last resort to cutting costs, especially because many of his employees have been with the company for a decade or longer. He said he would sooner delay making improvements to his showroom, such as re-arranging furniture or painting one of the display rooms, than lay off staff.

Ms. Bachler, owner of Calla, said that she considers her staff to be her store's most significant asset — that

"If we do, they usually come back" and talk about the experience they had at another barber shop, he said.

Mr. Kepler said that one customer, when told sales at Kepler's had been declining, grabbed the store's only shopping cart and filled it to the brim, completing all of her holiday shopping on the spot.

The crimp in consumer spending has been a boon to some retailers. Katie Hanson said that her high-end consignment shop on El Camino Real, Afterwards, has seen an influx of discerning shoppers looking for luxury garments that they can wear to holiday parties. People who might normally go to the mall have been drifting toward her store in search of discounted secondhand items, Ms. Hanson said.

Other effects of the recession have been less direct. Lynn Macy, who owns and operates The Pet Place on Santa Cruz Avenue with her husband Marc, said that the price of fuel and grain has skyrocketed in the last year, raising shipping costs and the price of pet food items. Ms. Macy said she thought that someone must have made an accounting error when she received an invoice for a recent shipment of beds for which shipping alone totaled \$140.

Higher shipping costs especially stress independent businesses such as Ms. Macy's, she said, because she doesn't order in bulk. Though she had to raise food prices recently, her business is still competitive with the chains, she said.

Mr. Arenas, owner of Golden Shears, said that his landlord raised his rent significantly several months ago. He added that he has been keeping an eye out for

holiday shopping season that by many accounts will be the worst in a long, long time.

#### Effects of the downturn

Owners of several local businesses said that they have been feeling the impact of the turmoil in the economy over the last two months, but that the extent of the damage remains to be seen. They were in agreement on one point: fewer people are out shopping.

"We've done a little tracking in a back-of-the-napkin sense" since the beginning of October, said Clark Kepler, owner of Kepler's Books and Magazines. In addition to the decline in foot traffic, he said, the average purchase price has dropped slightly since September.

Dexter Chow, co-owner of Cheeky Monkey Toys, said that his business has been experiencing the same trend Mr. Kepler described: There are fewer bodies in the store, and people tend to walk out with fewer items than they might have in years past. "I think people are focusing a little more on quality, as opposed to quantity," Mr. Chow said.

And Louie Arenas, who opened the Golden Shears barber shop on Santa Cruz Avenue in 1965, said he's found that his customers have been waiting a little longer between each trip to the barber's chair.

"We haven't been losing clientele," Mr. Arenas said.

Ms. Bachler knows that in some areas, her business simply can't compete with national chain retailers. She isn't able to offer as many discounts, and she can't maintain as deep an inventory as her competitors. But

By Sean Howell *Almanac Staff Writer*



*'One of our most important missions is customer service.'*

—TIGER BACHLER, OWNER OF CALLA

there are certain measures she can take to maintain customer loyalty that might be outside the scope of a larger store, she says — like, say, giving them the belt off her waist.

Ms. Bachler isn't sure what to expect as the holiday season approaches. She and her husband bought the business just three months ago, and the turmoil in the global economy has induced hand-wringing among merchants large and small. She finds herself in much the same position as a number of other business owners in downtown Menlo Park: depending on loyal customers to help her business get through the crucible of a

# WAITING IT OUT —

## *As the holiday season looms, local businesses hope for the best in a precarious economy*

IT'S THE TUESDAY BEFORE THANKSGIVING, AND TIGER BACHLER, OWNER OF THE HIGH-END CLOTHING SHOP CALLA ON SANTA CRUZ AVENUE, IS SHOWING A POTENTIAL CUSTOMER A BELT. IT'S MS. BACHLER'S BELT, ACTUALLY — SHE HAS JUST YANKED IT OFF HER OWN WAIST AND ASKED THE WOMAN IF SHE WANTED TO TRY IT ON. (CALLA DOESN'T HAVE THAT PARTICULAR BELT IN ITS INVENTORY, BUT SHE SAYS THAT SHE CAN SPECIAL ORDER IT, NO PROBLEM.)

The woman demurs, at first — she's considering the belt as a gift for her 16-year-old daughter — but before long, after some coaxing from the two saleswomen who greeted her when she came in the door, Ms. Bachler's belt is fastened around the woman's waist. Ms. Bachler offers to let the woman take it home — "just to borrow, until the new one comes in."

The woman takes Ms. Bachler up on the offer, and ends up leaving the store with two other belts that also caught her eye.

"One of our most important missions is customer service," Ms. Bachler said in an interview. "I'll be in the back room, doing paperwork, and when I hear a customer come in, I'll get drawn out to the front. It's just like a bunch of girlfriends getting together, talking about clothes."



The Girls' Middle School

IGNITING THE SPARK OF  
KNOWLEDGE AND SELF-DISCOVERY

OPEN HOUSE

Thursday, December 11  
7 p.m.

180 North Rengstorff Avenue • Mountain View, CA 94043  
T: 650.968.8338 x115 • www.girlsms.org • admissions@girlsms.org

## WAITING IT OUT

Continued from previous page

re-read. He said he hopes consumers still view books as a “rational” purchase, though he expects sales of pricier items such as coffee-table monoliths to decline. Kepler’s is trying to diversify its selection of non-literary gifts, he said, in an attempt to lure holiday shoppers.

But Mr. Kepler also noted that he recently received a “frightening” e-mail from the bookseller Barnes & Noble, predicting that this would be the industry’s worst holiday season in 30 years.

Mr. Chow said he was “reasonably confident” that Cheeky Monkey Toys will see a healthy turnout in the next few weeks. He estimated that 20 percent of Cheeky Monkey’s annual revenue comes between Thanksgiving and Christmas — so his business would be particularly sensitive to a downturn in that period.

Mr. Draeger said he was “optimistic” that Draeger’s would have a successful holiday season.

He expects patrons will continue to go for the specialty items, as they have in holiday seasons past, he said.

And Ms. Macy, co-owner of The Pet Place, said she was “knocking on wood” that pet toys haven’t become an unnecessary extravagance in this wobbly economy — though she wasn’t as hopeful about the viability of more extravagant items, like dog clothing.

“The nature of our business is that people love their animals and find comfort with their pets,” Ms. Macy said. “We think that people might even spend a little extra on their pets during these stressful times.”

Back at Calla, Ms. Bachler said she didn’t know when the holiday push would begin, though she noted that the store wrapped its first gifts on the Tuesday preceding Thanksgiving. Along with their employees, Ms. Bachler and her husband had spent the past week decorating the store with Christmas trees, wooden snowflakes and strands of lights, but she was holding off on the Christmas music until the morning after Thanksgiving.

She could only hope that it would be followed by a wave of shoppers. ■

## ■ Selling ‘shop local’

*Local businesses need to do more to convince consumers of their value, Clark Kepler says*

By Sean Howell  
Almanac Staff Writer

Clark Kepler, owner of Kepler’s Books and Magazines on El Camino Real, believes that local business owners can’t just sit back and expect consumers to recognize their value to the community.

“We’re competing with chains with a much stronger message,” Mr. Kepler said. “Independents haven’t always thought about that. They haven’t always asked themselves, ‘What is my value?’”

After Kepler’s closed for nearly 40 days in 2005, “I had person after person confess to me: ‘I’m sorry that I helped to put you out of business,’ because they had been [buying books] at Amazon. ‘I didn’t realize that my not giving you my business frequently enough could do this to you,’” Mr. Kepler recounted.

He said he thinks consumers are becoming more aware that they are “voting with their dollars” when they shop — an idea that rings especially true given the current state of the economy.

Just as a national chain might trumpet convenience and low prices, Mr. Kepler said, owners of independent businesses should highlight their own advantages. With that in mind, Mr. Kepler founded Hometown Peninsula, a loose affiliation of

local business owners that promotes shopping locally. Forty-eight of the group’s members are located within The Almanac’s circulation area — a list that, for the sake of full disclosure, includes The Almanac.

Members of the group brand themselves in much the same way that a so-called “Big-Box” chain like Wal-Mart or Safeway might, working collectively to ingrain the message that shoppers are giving back to the community when they buy from one of the member retailers.

Dexter Chow, co-owner of Cheeky Monkey Toys on Santa Cruz Avenue, was more skeptical than Mr. Kepler about consumers’ awareness of their impact on local businesses.

“There are definitely quite a few people who don’t seem to realize the impact their dollars have,” Mr. Chow said, noting that some customers browse his store, only to go home and buy the items they find there on the Web.

Menlo Park has long prided itself on the number and quality of its independent businesses. Mayor Andy Cohen called the city’s independent businesses “the single most important ingredient that accounts for our village character.” He went on to say that, “in terms of the feel of downtown, it’s the retail and the restaurants that create the atmosphere.”

But locally owned businesses do more than just enhance the feel of a community, according to Mr. Kepler. He pointed to research demonstrating that a greater percentage of the money spent locally stays within the area, when compared with purchases at chains, because independent businesses tend to buy their supplies and contract their labor within a smaller radius.

Tony Draeger, co-owner of Draeger’s Market, said that he thinks independent retailers are also better positioned to respond to the needs of the community than national chains. Price isn’t the only thing consumers consider, Mr. Draeger said.

“There’s a value in seeing a friendly face at the checkout, and in finding products you personally asked to have put in the store,” he said. “The diversity of products is unique to your particular neighborhood.”

He said he believes that, even in a down economy, shoppers will continue to look at more than just the price tag when they decide where to buy their groceries.

“If I’m spending locally, I’m enriching the community in ways the chains are not,” Mr. Kepler said. “We (locally owned businesses) have not fully grasped that concept, and we haven’t talked enough about it.” ■

## Breakfast with Santa

Saturday, December 6

8:30 a.m.—10:30 a.m.  
Center Pavilion

You’re invited to enjoy breakfast with Santa!

Join us as Santa and his favorite toy soldier helpers entertain guests with classic holiday stories and songs while you enjoy delicious breakfast treats and eats. There will be arts and crafts for all. The fun starts bright and early in the Center Pavilion so bring your appetite for Holiday cheer.

In association with:

Sears



UL Underwriters Laboratories

Wii

Presented locally by:

RADIO Disney



Shop Smarter. At Simon Malls.

This holiday season you’ll find more stores, more activities, and more family fun all in one place.

Stanford Shopping Center

El Camino Real & Sand Hill Road, Palo Alto / Shopping Line® 650.617.8200

SIMON MALLS | more choices®

simon.com/kidgits

## Resident reports interrupting home burglary

Alan Lucas, an 82-year-old Woodside man living in the 100 block of Marva Oaks Drive, reported to authorities that he came home around 2 p.m. Tuesday, Nov. 25, to find his front door kicked in.

Inside were three burglars who, upon being discovered, held Mr. Lucas at gunpoint and bound him in duct tape, according to a recounting of events by Lt. Ray Lunny of the San Mateo

County Sheriff's Office.

After failing to break into Mr. Lucas' two gun safes, the burglars fled with about \$350 of his money, though they dropped some on the way out, police said.

Mr. Lucas did not report injuries after working himself free of the tape, Mr. Lunny said. His 911 call came around 4 p.m. Detectives are looking for two men, one of whom is heavy set, and one woman, all Hispanic adults.

A search of the area turned up no one answering that description, police said.

The suspects seemed familiar with the home as they knew where to find the safes, Mr. Lunny said.

Detectives are asking witnesses or anyone with information about this case to call Detective Derron Sisneros at 363-4055 or the anonymous tip line at (800) 547-2700.

## It's illegal to burn wood on Spare the Air days

That cozy, crackling fire could cost you up to \$2,000 if your fireplace is caught smoking on a polluted day.

In summertime, people are urged to avoid driving and to use public transit to ease pollution on Spare the Air days.

During the winter, it's particulate matter from smoke that causes the worst problems, according to the Bay Area Air Quality Manage-

ment District. This year, for the first time, officials are doing more than just asking people to comply — it's now illegal and there are fines for those caught burning wood or wood pellets on winter Spare the Air days.

The winter Spare the Air season runs until Feb. 28.

Stoking up the home fires won't be a problem on regular days, and there is an exemption for people who rely on woodstoves as their home's sole heating system.

The air quality district is issuing the Spare the Air alerts and is urging people about to check before lighting up by visiting [www.sparetheair.org](http://www.sparetheair.org) (where you can sign up for e-mail alerts) or call 1-877-4-NO-BURN. The alerts are based on the district's forecasts for particulate pollution.

According to the district, prolonged exposure to the fine particulates in wood smoke has been linked with aggravated asthma, lung and heart disease, and increased mortality rates. Wood burning is responsible for about one-third of the winter particulate matter air pollution in the Bay Area, according to the district.

## Menlo Park man charged with rape

A Menlo Park man is facing charges of raping a woman at a costume party at Oregon State University.

Gregory Sako, 19, is a graduate of Menlo-Atherton High School and a member of the Phi Kappa Psi fraternity at Oregon State. According to police, he allegedly raped a 21-year-old Portland resident on Nov. 1 while at a Halloween party. He pleaded not guilty at a Nov. 3 arraignment and is due back in Benton County Circuit Court on Dec. 18, according to news reports.

Mr. Sako's attorney, Stephen Ensor, did not return The Almanac's phone calls seeking comment.



# SHARE the MAGIC

AT TOWN & COUNTRY VILLAGE

Enjoy the holidays at the newly remodeled Town & Country Village — featuring over 45 unique specialty stores, daily services and fine restaurants and eateries. Town & Country will be illuminated with thousands of sparkling white lights — from our stores and restaurants to our majestic oak trees, The Village will be a magical setting and a sight to behold this holiday season.

*Now Open*

Ambassador Toys • Kara's Cupcakes  
Robert Krohn Shoes • Y & I Clothing Boutique

*Opening in December*

Astor Gift & Home • La Belle Day Spa  
Panache Petals • U Threads

## Share the Fun!

**Music and merriment are coming to Town & Country. Meet Rudolph, Frosty and Santa's Elves!**

Saturday, December 6: Noon - 2 pm  
Peninsula Youth Theatre

Sunday, December 7: Noon - 2 pm  
Palo Alto High School Madrigal Singers

Saturday, December 13: Noon - 2 pm  
Frosty the Snowman and The Holiday Elf meet & greet. Photos Welcome!

Sunday, December 14: Noon - 2 pm  
Peninsula Youth Theatre

Saturday, December 20: Noon - 2 pm  
Rudolph and Santa's Elf meet & greet. Photos welcome!

## Share the Warmth

This holiday season, Town & Country Village is hosting Operation One Warm Coat. Now through January 31, Town & Country stores, restaurants and services are collecting new or gently used coats. All coats will be donated to local organizations serving those in need. For a complete list of donation drop-off locations, visit [www.TandCVillage.com](http://www.TandCVillage.com)



**Online.  
Anyplace.  
Anytime.**

[www.TheAlmanacOnline.com](http://www.TheAlmanacOnline.com)

TOWN & COUNTRY VILLAGE EL CAMINO REAL & EMBARCADERO ROAD IN PALO ALTO [WWW.TANDCVILLAGE.COM](http://WWW.TANDCVILLAGE.COM)

## Spread the Joy!



JOY #6



### Joy #6: The Snuggly-Warm Duvet

Gloriously made from 100% goose down to be fluffier, warmer, yet decidedly lighter.

For More Sumptuous, Sleep-Inducing Gift Ideas from McRoskey Mattress

Visit [www.McRoskey.com](http://www.McRoskey.com)

Call or visit our  
Palo Alto Store  
220 Hamilton at Emerson  
888-760-9110



A heritage of comfort.



## Peninsula School

Nursery through 8th Grade  
Progressive Education Since 1925



### We believe education is challenging and joyous

- Celebrating arts and academics
- Working together to cultivate curiosity and imagination
- Strong community building
- Focusing on the process of learning
- Low student teacher ratio, small class size

#### IMPORTANT DATES

**Nursery, Kindergarten & 1st Grade Open House**  
Saturday, Nov. 15 & Jan. 10, 10:00–11:30 a.m. Children welcome.

**School Tours—Thursdays at 10:00 a.m.**  
Oct. 9, 16, Nov. 6, 20, Dec. 4, Jan. 8 and 15. Parents only, please.

For an appointment, please call 650.325.1584, ext. 5.

920 Peninsula Way, Menlo Park, CA  
650.325.1584 • [www.peninsulaschool.org](http://www.peninsulaschool.org)

## Woodside names new planning director

By Dave Boyce

Almanac Staff Writer

Jackie Young, the acting director of community development with the city of Campbell, starts in Woodside on Dec. 15 as director of planning and building, Town Manager Susan George said in an interview.

Ms. Young will head a department of seven and be paid \$162,000, Ms. George said. She has a bachelor's degree in design and a master's degree in urban planning from San Jose State University.

"I've been impressed since the first day I met her," Ms. George said. "She was head and shoulders above everybody else."

Ms. Young has a "very solid" background in the essentials of local planning and is "pretty solid" in historical preservation,

Ms. George said, noting that she was also a staff liaison to a historic preservation board in Campbell.

Ms. Young interviewed three times with Ms. George, once with acting planning director Irwin Kaplan and also with the department's two senior planners, Ms. George said. She also met with council members.

The Woodside planning department has had its share of controversy. What would Ms. Young be inheriting?

"I think in most communities, the planning and building department is the lightning rod for controversy and that sort of thing," Ms. George said. "She's actually inheriting a pretty good team and a team whose motivation is pretty good these days."

"We are working very hard to implement a series of process

changes to make it easier for residents to deal with our department," she added.

In Campbell, Ms. Young supervised a staff of 13. In her 13 years in the public sector, Ms. Young has also worked for Santa Cruz County and the cities of Mountain View and Scotts Valley, Ms. George said.

She spent nine years in the private sector, including work for a construction and development manager, so she's familiar with being on the other side of the counter in a planning department, Ms. George said.

What if Ms. Young wants to reorganize? "If she wants to reorganize, she will need to check with me, but I will essentially give her carte blanche," Ms. George said. "I can't imagine anything that I couldn't agree with." ■

## Final push for children's area at MP Library

By Jane Wyman

As of Dec. 1, the Menlo Park Library Foundation has raised \$453,000 of the \$500,000 it needs to renovate the children's area of the main library.

With the holidays approaching, foundation members hope that members of the Menlo Park and Atherton community will consider a donation to the campaign, perhaps in lieu of exchanging presents this year. A gift to the project will be a double gift — to the children of the town and to those on one's list who can enjoy the revitalized children's library.

The success of the campaign so far has been an extraordinary community effort, with contributions ranging from \$4 tucked in an envelope by two children attending one of the foundation's special events, to \$25,000 from the Gilliland-Turner Family Fund.

Donations of all levels in between have come as a result of a mailing to 9,000 homes in Menlo Park and Atherton and outreach to targeted donors, local foundations, and service clubs, such as the Lions and the Kiwanis.

A final \$47,000 will ensure that

**About the author;** Jane Wyman is co-chair of the Menlo Park Library Foundation's campaign to renovate the children's area of the main library.

the refurbished children's library will be completed by the beginning of next summer.

#### Help from businesses

Local businesses have generously supported the project. Fifty stores displayed small bookmark holders, donated by Village Stationers, holding charming bookmarks designed by 6-year-old Elise Kratzer.

Draeger's publicized the drive on its grocery bags. Cheeky Monkey Toys sold T-shirts with the campaign logo and hosted a special shopping spree with 10 percent of all sales going to the fund.

Three free family events were hosted by the foundation jointly with committed citizens:

■ Kepler's co-sponsored a reading by award-winning authors Doreen Cronin and Betsy Lewin, which attracted 200 people.

■ Singer-songwriter Nancy Cassidy sang her songs on the library lawn and donated \$5 from the sale of every CD to the cause.

■ Chief Harold Schapelhouman of the Menlo Park Fire Protection District offered climbs on fire engines and rides on Old Tom, demonstrated the activities of his team of firefighters, and read stories to 150 delighted participants.

The campaign was kicked off by a major gift of \$100,000 from the Friends of the Menlo Park Library. The city supported the effort by releasing \$241,000 held in reserve for the library from a bond issue in 1993 and from endowments. The foundation is particularly proud that it can reach its goal without taking a penny from the general fund.

A detailed description of the project and a progress report are located on the foundation's Web site, [www.foundationmpl.org](http://www.foundationmpl.org). Naming opportunities are available for significant donations.

#### ■ INFORMATION

Donations to the renovation project may be sent to: Menlo Park Library Foundation, 800 Alma St., Menlo Park, CA 94025. More information about the project, and a donation form, can be found at [www.foundationmpl.org](http://www.foundationmpl.org)

## County to weigh long-term permit for Horse Park

Representatives of the Horse Park in Woodside will be before the San Mateo County Planning Commission on Dec. 10 to argue in favor of a long-term use permit to replace the six-month permit they've been living with for years.

The 272-acre nonprofit facility provides the public room to practice a range of equestrian disciplines and over the last year

"has addressed every concern of the County," Horse Park spokeswoman Nan Chapman said in a letter to The Almanac.

The Planning Commission meets at 9 a.m. Wednesday, Dec. 10, on the first floor of 400 County Center at the corner of Bradford and Hamilton streets in Redwood City.

Renewing the permit every six months "puts a tremendous

strain, of both time and manpower on all of the volunteers involved," Ms. Chapman said.

The Horse Park includes facilities for polo, dressage, jumping and a therapeutic riding program, and serves "thousands of children and adults each year," Ms. Chapman said. Temporary shelter is available for 240 horses and there are eight arenas.

# Boys & Girls Clubs: Focusing on education

By Tracy Koon

For 50 years, the Boys & Girls Clubs of the Peninsula has provided a place where all children are welcome and can belong. The Club has evolved over the years. It is now regarded as one of the most comprehensive youth development organizations in the Bay Area.

Today, the Club has eight sites—three clubhouses and five school-based locations. More than 1,000

children attend daily, and a team of caring staff and volunteers guide and inspire them to develop the attitudes and life skills they need to thrive. The Club's programs focus on academics, science and technology, social education, life skills, athletics, and the arts.

The Club has recently refocused on engaging and supporting teens. Between 60 and 70 percent of the kids from the Peninsula's low-income areas do not graduate from high school, resulting in a range of societal problems that affect us all.

"When the majority of youth living in some of our neighborhoods are not graduating from high school, something is clearly

## ■ HOLIDAY FUND

Gifts to the Holiday Fund benefit the Boys & Girls Clubs of the Peninsula. To give to the Holiday Fund, use the coupon on this page or go to [TheAlmanacOnline.com](http://TheAlmanacOnline.com).

wrong," said Peter Fortenbaugh, executive director of the Boys & Girls Clubs of the Peninsula. "We have a responsibility to do something about it."

The result of this commitment is a new program called College Bound. The objective of College Bound is to provide mentoring and individual development to ensure members graduate from high school with a plan for their future.

That plan can include attendance at a two- or four-year college or, depending on the students, focus on choosing a vocational or trade school that will train them for jobs that pay a living wage and provide financial stability.

College Bound now serves 55 Club teens enrolled at four local high schools. Each participant has an assigned case manager who stays involved with the teen and the school.

This individualized approach ensures that students remain "on track" to graduate because managers follow overall GPAs, school attendance, credits taken each semester and courses successfully completed.

Participants also attend sessions aimed at key skills for success, such as note-taking, study skills, time management, communication, advocacy, and the importance of having adults as allies.

Program director Sean Mendy is pleased with the results so far. "You can feel the youth starting to buy

See **CLUBS**, page 18

## Correction

In the Nov. 26 issue of The Almanac, there was an error in the list of organizations in the Holiday Fund coupon. The Teen Pregnancy Prevention Coalition is not among this year's list of 10 organizations that benefit from donations to the Holiday Fund. We regret this mistake.

# Ecumenical Hunger provides hope in desperate times

By Lesia Preston

Charlie could not fathom the situation he found himself in. At a little past 1 a.m. he parked his cramped Honda Civic in front of a dimly lit house in a fairly quiet neighborhood. He locked all the car doors and

reclined his seat just slightly so he wouldn't bother his sleeping wife and his infant daughter in the back seat. As tired as he was, sleep just

## ■ HOLIDAY FUND

Gifts to the Holiday Fund help the Ecumenical Hunger Program. To give to the Holiday Fund, use the coupon on this page or go to [TheAlmanacOnline.com](http://TheAlmanacOnline.com).

would not come. Images, thoughts, and worries kept flashing through his mind. ... Just two months ago, I had a job, an apartment, and a way to feed my family. ... He saw the sympathetic on his former employer's face as he gave Charlie

See **HUNGER**, page 18

# Giving to the Holiday Fund

Your gift helps children and others in need



Contributions to the Holiday Fund go directly to programs that benefit Peninsula residents. Last year, Almanac readers contributed \$116,000, and with available matching grants, over \$150,000 was raised for 10 agencies that feed the hungry, house the homeless and provide numerous other services to those in need.

Contributions to the Holiday Fund will be matched, to the extent possible, by generous community corporations, foundations, and individuals, including the Rotary Club of Menlo Park, the David and Lucile Packard Foundation, and the William and Flora Hewlett Foundation. No administrative costs will be deducted from the gifts, which are tax-deductible as permitted by law.

All donations to the Holiday Fund will be shared equally among the 10 recipient agencies.

## This year, the Almanac's Holiday Fund will support these nonprofit organizations in the community

- Boys & Girls Clubs of the Peninsula**  
 Provides after-school academic support and enrichment activities for 1,000 youths each day, ages 6 to 18. Operates clubhouses in Menlo Park's Belle Haven neighborhood, East Palo Alto and Redwood City, and after-school programs at schools in these communities designed to extend the learning day and supplement the school's curriculum.
- Second Harvest Food Bank**  
 The largest collector and distributor of food on the Peninsula, Second Harvest Food Bank distributed 30 million pounds of food last year. It gathers donations from individuals and businesses and distributes food to some 162,000 people each month through more than 700 agencies and distribution sites in San Mateo and Santa Clara counties.
- St. Anthony's Padua Dining Room**  
 Serves hundreds of hot meals six days a week in a social and friendly atmosphere to anyone in need. Funded entirely by contributions from the community, St. Anthony's is the largest soup kitchen between San Francisco and San Jose. It offers groceries to take home and distributes clothing to families.
- St. Francis Center (North Fair Oaks)**  
 Provides services for families in need with the goal of helping them to live in dignity and become self-supporting community members. Assists 2,400 people each month with such services as low-income housing, food and clothing, showers and laundry, counseling, community garden, and education.
- Shelter Network**  
 Provides short-term shelter and transitional housing services to more than 3,700 people and children each year. Offers programs for families and individuals to become self-sufficient and return to permanent housing.
- Youth and Family Enrichment Services**  
 Provides many programs to help people who struggle with substance abuse, domestic violence, and mental health, relationship and communications issues. Helps strengthen youth, families and individuals to overcome challenges through counseling, education, and residential services.
- Ecumenical Hunger Program**  
 Provides emergency food, clothing, household essentials, special children's programs and sometimes financial assistance to families in need, regardless of religious preference, including Thanksgiving and Christmas baskets for more than 1,500 households.
- Family Connections**  
 Provides a free parent-participation preschool program that includes parent education, parent leadership, preschool and pre-kindergarten for 400 people, including children, ages newborn to 5, at three sites in the Belle Haven neighborhood of Menlo Park, East Palo Alto, and the North Fair Oaks neighborhood of Redwood City.
- Project Read-Menlo Park**  
 Provides free literacy services to adults in the Menlo Park area. Trained volunteers work one-to-one or in small groups to help adults improve their basic reading, writing and English language skills so they can achieve their goals and function more effectively at home, at work, and in the community. In 2007-08, a total of 120 tutors assisted more than 300 students.
- Ravenswood Family Health Center**  
 Provides primary medical care, behavioral health services and preventive health care for all ages at its clinics in Belle Haven and East Palo Alto. It also operates a mobile clinic at school sites. Of the 22,700 registered patients, most are low-income and uninsured.

Name of donor \_\_\_\_\_ Amount \$ \_\_\_\_\_

Street address \_\_\_\_\_

City \_\_\_\_\_ State \_\_\_\_\_ Zip \_\_\_\_\_

I wish to contribute anonymously.  Don't publish the amount of my contribution.

I wish to designate my contribution as follows:

In honor of: \_\_\_\_\_  In memory of: \_\_\_\_\_

TO DONATE ONLINE GO TO: [TheAlmanacOnline.com](http://TheAlmanacOnline.com)

PLEASE MAKE CHECKS PAYABLE TO: THE HOLIDAY FUND

Enclose this coupon and send to: *The Almanac Holiday Fund*  
 The Almanac, 3525 Alameda de las Pulgas,  
 Menlo Park, CA 94025

By Credit Card:  Visa or  MasterCard No. \_\_\_\_\_

Exp. Date \_\_\_\_\_

Signature \_\_\_\_\_

The organizations named below provide major matching grants to the Holiday Fund.



The William and Flora  
Hewlett Foundation

The David and Lucile  
Packard Foundation



Rotary Club of Menlo Park

The Almanac will make every effort to publish donor names for donations received before Dec. 31, 2008, unless the donor checks the anonymous box. All donations will be acknowledged by mail.

## The Village Doctor Welcomes Dr. Marland Chancellor!



PHOTO: RIO COSTANTINI



F. MARLAND CHANCELLOR, III, MD  
2979 Woodside Road, Woodside  
650.851.4747  
www.villagedoctor.com

**D**r. Marland Chancellor is a board-certified family medicine physician who joined The Village Doctor after five-and-a-half years at the highly respected Palo Alto Medical Foundation, where he provided comprehensive care to families and individuals of all ages. In his practice, Dr. Chancellor stresses attention to each person's physical, mental, and spiritual health, with an emphasis on wellness, which he believes encompasses much more than just the absence of disease.

Dr. Chancellor was raised in Palo Alto, obtained a B.A. degree from Yale and an M.D. degree from Ohio State University, and then completed his family medicine residency training at UCLA. He practices the full spectrum of family medicine, and when not caring for his adult and pediatric patients he enjoys time with his wife and three young daughters.

## Hope in desperate times

### HUNGER

continued from page 17

the bad news that the company had to downsize and his department was being "reorganized."

Oh, how he hated that word. Now they were living in their car. His stomach grumbled, protesting hunger. He didn't like the idea of having to ask for help, but he was out of options.

Tomorrow, he thought ... tomorrow I'll call that number they gave me at the unemployment office. Grasping that small bit of hope, he closed his eyes and tried to get some sleep.

The next day, Charlie did call the Ecumenical Hunger Program, and the receptionist encouraged him to come in right away. Our caseworker found a temporary shelter where Charlie and his family were housed and

fed until something more permanent could be established.

Within two weeks, EHP was able to locate an affordable cottage for rent in East Palo Alto and to assist with the first month's rent and deposit. We gave them enough groceries for two weeks, diapers for the baby, and some furniture for their new home.

With the help of the district recruiter of an area grocery chain, who was volunteering at EHP, Charlie was hired as a full-time employee at a local store. For the first time in three months, Charlie felt an almost unbearable weight lifted from his shoulders.

This is the actual story of a new family who received a lifeline from EHP. There are many more Charlies, whose stories may be somewhat different but whose need is the same — the

See **HUNGER**, page 19

### CLUBS

continued from page 17

in to the idea that they don't have to be a statistic. They are learning that they can graduate, they just have to put in hard work and take advantage of the resources they

have all around them. We are helping them be prepared for the next step in their lives - and they know that we will support them in any way we can."

For more information on the Boys & Girls Clubs of the Peninsula, go to [www.bgcp.org/](http://www.bgcp.org/).



THE TOWN OF ATHERTON  
91 ASHFIELD RD.  
ATHERTON, CA 94027

### ATHERTON'S

#### NEED FOR ADDITIONAL SPACE FOR PUBLIC SERVICES

Back in 1928, a bond was passed for the first Atherton Town Hall. It served well until 1965 when the current Town Hall was built using bonds. By 1978, the police required trailers for extra space needs: in the 1990s, the Public Works and Building Department were moved to trailers at the end of Ashfield Road.

Pressure to meet OSHA, EPA and State requirements has urged a call to action. In 2006, the Council received a space needs study. This year, a Blue Ribbon Task Force of Council members, staff, and residents was formed to understand, define, and inform Atherton of space needs for the Town's public services.

The Task Force will focus on outreach to residents during the next few months.

Residents are encouraged to take escorted tours of the current Town Administrative Center at their leisure. Simply call to make an appointment at 650.752.0500.

Discussion meetings will be held at the Jennings's Pavilion in Holbrook-Palmer Park:

- December 9 7p.m. Topic: Discuss data and survey results, State requirements, and visual site plans.

Survey forms will be given to those who attend.

A decision to go forward will affect every Athertonian, not just by the need to raise monies to fund these facilities but in the quality of services we demand.

Published in THE ALMANAC on November 26, December 3, 2008.

**RJ's**  
Upholstery  
and  
Slipcovers

A Better Choice Since 1960  
1664 Industrial Road

**A Fabric Store**

**50% off**  
Selected Fabrics

650-591-0220  
San Carlos

## A TASTE OF THE PENINSULA

A cornucopia of restaurants and cafes providing the finest dining from brunch to dessert.

### Breakfast, Lunch & Dinner

#### Celia's Mexican Restaurant

3740 El Camino, Palo Alto (650) 843-0643  
1850 El Camino, Menlo Park (650) 321-8227  
[www.celiasrestaurants.com](http://www.celiasrestaurants.com)

Full Bar - Happy Hour Specials; Catering

#### Vive Sol-Cocina Mexicana

2020 W. El Camino Real, Mtn. View  
(650) 938-2020.

Specializing in the Cuisine of Puebla.  
Open daily for lunch and dinner.

### Coffee & Tea

#### Connoisseur Coffee Co.

2801 Middlefield Road, Redwood City  
(650) 369-5250 9am-5:30pm Mon. - Sat.

Coffee roasting & fine teas,  
espresso bar, retail & wholesale.



To Advertise in "A Taste of the Peninsula" call The Almanac 650-854-2626.

**HUNGER**

continued from page 18

need to survive.

We are all acutely aware of the current economic crisis and just how dire things have become. People who were already struggling must now fight even harder to survive. At EHP we are fighting by their side, trying to ensure that they have a "safety net" beneath them during this very difficult time.

Join this fight with us! Your generosity will enable us to sustain struggling families through increasingly hard times and will allow us make this a brighter holiday season for families in need in our community.

*The Ecumenical Hunger Program is based at 2411 Pulgas Ave., East Palo Alto, CA 94303. For more information, call 323-7781 or send an e-mail to [info@ehpcares.org](mailto:info@ehpcares.org) or visit the Web site, [www.ehpcares.org](http://www.ehpcares.org).*

**Woman dies in Sand Hill Road crash**

By **Andrea Gemmet**

*Almanac Staff Writer*

Police are asking for help from witnesses as they investigate a two-vehicle fatal collision on the border of Menlo Park and Palo Alto on Nov. 20. The crash left a 77-year-old woman dead and blocked both eastbound lanes of Sand Hill Road for more than three hours, authorities said.

Two cars, a Kia and an Audi, collided shortly after 9:30 a.m. in the area of Sand Hill Road and Saga Lane, said Sgt. Sharon Kaufman of the Menlo Park Police Department.

A passenger in that car, Victoria Ubaldo of San Jose, was pronounced dead at the scene, said Sgt. Kaufman.

The driver was Ms. Ubaldo's 27-year-old granddaughter, said Sgt. Kaufman. Also in the car was

the driver's 2-year-old daughter. Neither one was seriously injured, Sgt. Kaufman said.

The sole occupant of the other car was also not seriously injured, she said.

Multiple agencies responded, including the Menlo Park Police Department, the Menlo Park Fire Protection District, and the Palo Alto Fire Department.

The collision sent the Kia into the driveway of the SLAC National Accelerator Laboratory at 2575 Sand Hill Road, said Battalion Chief Chris Jackson of the Palo Alto Fire Department.

Both eastbound lanes of Sand Hill Road were blocked until shortly before 1 p.m., Menlo Park fire Deputy Chief Tim Campbell said.

The cause of the crash is under investigation. Witnesses are asked to call Menlo Park officer Ronald Venzon at 330-6300. ■

**CASTILLEJA SCHOOL**

*Women Learning • Women Leading*



*Celebrating a Century of Educating Girls*

**Fall 2008 Open House Dates**

Middle School (grades 6-8)  
Sunday, November 9

Upper School (grades 9-12)  
Sunday, December 7

To make a reservation or learn more  
[www.castilleja.org](http://www.castilleja.org) • 650.470.7733 • [admission@castilleja.org](mailto:admission@castilleja.org)  
1310 Bryant Street, Palo Alto

A COMBINATION OF A *tasting* ROOM, EUROPEAN STYLE CAFÉ, AS WELL AS A *specialty* MARKET

- WINE & CHEESE ■
- SOUPS & SALADS ■
- CHOCOLATE FONDUE ■
- CHEESE FONDUE ■

**650.322.WINE**  
[www.GCsTastingCafe.com](http://www.GCsTastingCafe.com)  
657 Oak Grove Ave Menlo Park  
M-W: 10 am - 9 pm | Thurs-Sat: 10 am - 11 pm | Sun: 10 am - 3 pm

**Home Care Assistance, Inc**  
Is pleased to announce that

**Kathy N. Johnson, CMC, PhD**

Is now Certified  
by the National Academy  
Of Certified Care Managers  
and is designated as CMC.

---

Telephone: 650-462-6900  
Email: [KJohnson@HomeCareAssistance.com](mailto:KJohnson@HomeCareAssistance.com)

*A Wise Choice*

When it comes to selection, there is no better place to shop than Hillsdale Shopping Center. We've got 130 of your favorite stores including bebe, Build-A-Bear Workshop, Chico's, Coach, Crate & Barrel, Gymboree, Guess, Hollister, MAC, Nordstrom, Swarovski, Williams-Sonoma and more. Let us simplify your holiday shopping with handy gift wrap service, extended hours and plenty of covered parking.

**GIVE THE GIFT THAT ALWAYS FITS**  
Hillsdale Shopping Center Gift Cards are available for purchase daily at The Customer Service Center. Always beautifully packaged for easy gift-giving. Welcome at all stores accepting American Express. Fees, terms and conditions apply.

**CAPTURE THE SMILES WITH SANTA**  
Santa photo packages start at just \$12.95 with a variety of sizes and styles just right for you. For more information, visit [www.hillsdale.com](http://www.hillsdale.com).

**HILLSDALE SHOPPING CENTER**

NORDSTROM, MACY'S, MERVYN'S AND SEARS PLUS 130 SPECIALTY STORES  
Located off Hwy. 101 at Hillsdale Blvd. and El Camino Real in San Mateo  
Shop Mon. - Sat. 10 am - 9 pm and Sun. 11 am - 7 pm 650.345.8222 hillsdale.com.  
Call for our extended holiday hours. Hillsdale is serviced by CalTrain and SamTrans. Gift Cards available for purchase daily at the Customer Service Center located across from The Tailor Maid.







Town Hall  
765 Portola Road  
Portola Valley, CA  
94028

## Town of Portola Valley Winter 2009 Class Schedule

Phone: 650-851-1700 ext. 200  
Fax: 650-851-4677  
Email:  
crodas@portolavalley.net

Visit us at our website: [www.portolavalley.net](http://www.portolavalley.net)

Monday	Tuesday	Wednesday	Thursday	Friday	Saturday
<b>Kickboxing Adults</b> 8:30 - 9:15am  <b>Science &amp; Nature</b> 1st Grade 3:15 - 4:45 pm  	<b>Creative Art for Young Children</b> Pre-School 10:00 - 11:30 am  <b>Science &amp; Nature</b> 2nd - 4th Grade 3:15 - 4:45 pm  <b>Karate</b> Ages: 5 and up 4:00 - 6:00 pm	<b>Tai Chi Adults</b> 8:30 - 9:15 am  <b>Science &amp; Nature</b> Kindergarten 1:30 - 3:00 pm  	<b>Creative Art for Young Children</b> Pre-School 10:00 - 11:30 am  <b>Creative Art for Young Children</b> Kinder - 2nd Grade 3:00 - 5:00 pm  <b>Karate</b> Ages: 5 and up 4:00 - 6:00 pm  	<b>Kickboxing Adults</b> 8:30 - 9:15 am  <b>Creative Art for Young Children</b> Pre-K - Kindergarten 1:00 - 2:30 pm  <b>Creative Art for Young Children</b> Kinder - 2nd Grade 3:00 - 5:00 pm  <b>Modern Dance for Children</b> Ages: 7 - 10 3:30 - 4:30 pm	<b>Creative Art for Young Children</b> Ages: 3 - 8 10:00 - 12:00 pm  <b>Creative Art for Young Children</b> Ages: 3- 8 1:00 - 3:00 pm  <b>Self Defense Seminar</b> Adults/Teens 1:00 - 3:00 pm *One day class  
<p><b>Registration for Portola Valley residents will begin December 1st-16th . Non-Resident registration begins December 16th, please visit our website for more information or call (650) 851-1700 ext. 200</b></p>					

## Toy drive benefits tots

Menlo Park firefighters are once again pitching in to make the holidays happier for local children with an annual toy and food drive.

Every year, the Menlo Park Firefighters Association collects toys, books, stuffed animals, food and donations to benefit nearly 3,000 children, according to John Wurdinger, association president, and David Bragg, a member.

The donations are distributed through St. Anthony of Padua Catholic Church, Stanford Hospital, the Menlo Park Veterans Affairs hospital, Second Harvest Food Bank, the Ecumenical Hunger Program and Ronald McDonald House.

New, unwrapped toys and non-perishable food may be dropped off in donation bins located at all seven Menlo Park district fire stations, and at local businesses such as The Almanac, 3525 Alameda de las Pulgas at Gordon Avenue in Menlo Park.

Fire stations are located at: 300 Middlefield Road in Menlo Park; 2290 University Drive in East Palo Alto; 32 Almendral Ave. in Atherton; 3322 Alameda de las Pulgas in Menlo Park; 4101 Fair Oaks Ave. in Menlo Park; 700 Oak Grove Ave. in Menlo Park; and 1467 Chilco St. in Menlo Park.

The Menlo Park Firefighters Association's toy drive is based on the well-known Toys for Tots campaign founded by the U.S. Marine Corps. In 1979, two association members became very involved in the Toys for Tots campaign, and within five years Menlo Park firefighters had founded their own toy drive, according to Mr. Wurdinger and Mr. Bragg.

## Talks on leadership, management ideas

Michael J. Genevro will hold three free sessions at the Menlo Park Library on organizational management, the first at 6 p.m. Tuesday, Dec. 2.

Mr. Genevro's talks — running on three successive Tuesdays and all starting at 6 p.m. and lasting about 90 minutes — will draw on the work of Peter Senge, a professor at MIT's Graduate School of Business.

The Dec. 2 talk will center on the "five disciplines of leadership and change" outlined in Mr. Senge's work. The other two sessions are on Dec. 9 and Dec. 16. The library is located in the Civic Center between Laurel and Alma streets.

## A heartfelt story.

My open-heart surgery changed my life.

I'm grateful for the way I was treated by the staff and nurses at Sequoia.

In fact, my nurses were so attentive it was if they were taking care of their own child.

My thanks go to Sequoia, too, for their dedication in building an award-winning heart program.

How can I pay everyone back? I'm starting by giving each of my nurses a big box of chocolates.

If you ask me, the heart program at Sequoia is top notch. No wonder people come from far away to be treated here.

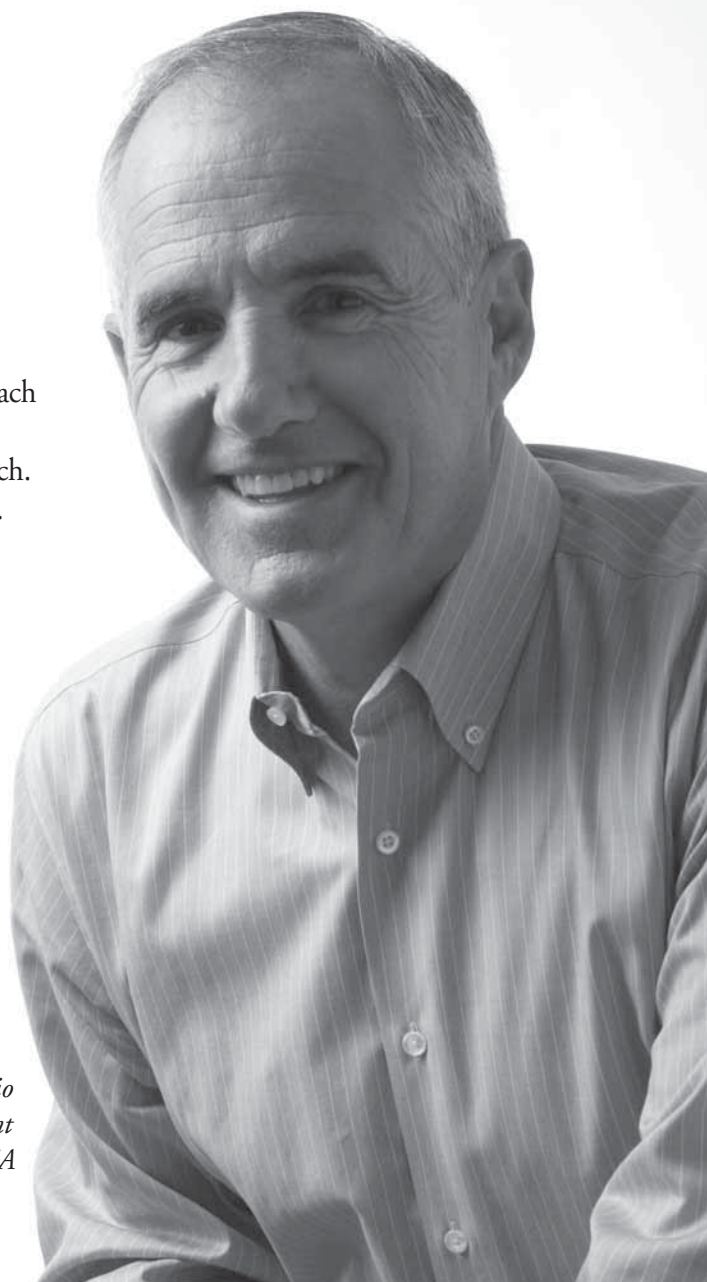
Sequoia Hospital invites you to learn more at [www.sequoiahospital.org](http://www.sequoiahospital.org).



**Sequoia Hospital**

A member of CHW

*Alpio*  
Local business owner and heart patient  
Redwood City, CA



**James William Plunkett Jr.**

Son of NFL quarterback

Atherton resident James William Plunkett Jr. died Nov. 22. He was 25.

Mr. Plunkett was a student at Arizona State University. He is survived by his parents, former NFL quarterback Jim Plunkett and his wife Gerry, of Atherton; and his sister Meghan Plunkett.

Family members said they would miss his loving personality and wonderful sense of humor.

A service was held Nov. 28 at Stanford Memorial Church, following a viewing at Spangler Mortuary in Menlo Park. The family prefers memorial dona-

**OBITUARIES**

**Obituaries are based on information provided by mortuaries and family members.**

tions be made to a dog rescue and rehabilitation center, Cesar & Illusion Millan Foundation, P.O. Box 2039 Burbank, CA 91507 or www.millanfoundation.org.

**Thomas McLaren gathering**

A gathering to celebrate the life of Thomas "T" McLaren will be held from 11 a.m. to 2 p.m. Saturday, Dec. 13, at Cafe de la Paz, 1600 Shattuck Ave., in Berkeley. To attend, respond by e-mail to Mary at mmtonglen@yahoo.com by Dec. 10.

Mr. McLaren, who grew up in Menlo Park and Atherton, died April 27, 2008, at his home in Lake Tahoe.

**POLICE CALLS**

*This information is from the Atherton and Menlo Park police departments and the San Mateo County Sheriff's Office. Under the law, people charged with offenses are considered innocent until convicted.*

**ATHERTON**

**Auto-burglary report:** Window smashed and Apple iPod and \$10 in cash stolen, parking lot of Menlo-Atherton High School at 555 Middlefield Road, Nov. 25.

**Stolen vehicle report:** Blue Audi TT stolen but with radio-tracking device installed, Manzanita Road, Nov. 25.

**Fraud report:** Over-the-limit charges on new credit card taken out in victim's name, Polhemus Ave., Nov. 26.

**MENLO PARK**

**Residential burglary report:** Laptop computer stolen, 100 block of Spruce Ave., Nov. 21.

**Commercial burglary report:** Computer equipment stolen, Heller Ehrman LLP at 275 Middlefield Road, Nov. 22.

**Auto-burglary reports:**

■ Window smashed and GPS device stolen, 3800 block of Bohannon Drive, Nov. 21.

■ Tools valued at \$4,000 stolen from pickup truck, 2700 block of Sand Hill Road, Nov. 26.

**Fraud reports:**

■ Wages garnished illegally, police substation at 1197 Willow Road, Nov. 25.

■ Bad checks received totaling \$1,100, 1200 block of El Camino Real, Nov. 25.

■ Unauthorized charges of \$17,000 made to credit card, main police station at 701 Laurel St., Nov. 27.

**Stolen vehicle reports:**

■ Blue 1988 Chevrolet Cheyenne stolen, 1400 block of Almanor Ave., Nov. 15.

■ Light blue 1992 Honda Accord, Garwood Way and Glenwood Ave., Nov. 17.

■ 1990 Gray Toyota Camry stolen, 300 block of Pierce Road, Nov. 27.

**WOODSIDE**

**Solo motorcycle accident and rider taken to hospital complaining of pain in chest and leg, Woodside Road east of Friars Lane, Nov. 22.**

**PORTOLA VALLEY**

**Tow-truck driver diagnosed with low blood sugar by medics after found going in and out of consciousness at wheel of parked truck with its tires spinning and sending up white smoke, Alpine Road and Westridge Drive, Nov. 23.**

**LADERA**

**Auto-burglary report:** Vehicle rear window smashed, purse stolen and charges made on credit cards, Lawler Ranch and Sand Hill roads, Nov. 12.

**Theft report:** Briefcase robbed of wallet, \$300 cash and three credit cards, including one with unauthorized charges of \$1,000, 6000 block of Dumbarton Circle, Nov. 20.

**BIRTHS**

**MENLO PARK**

■ Melissa Jeuck and Hady Abou El Kheir, a son, Oct. 9, at Good Samaritan Hospital.

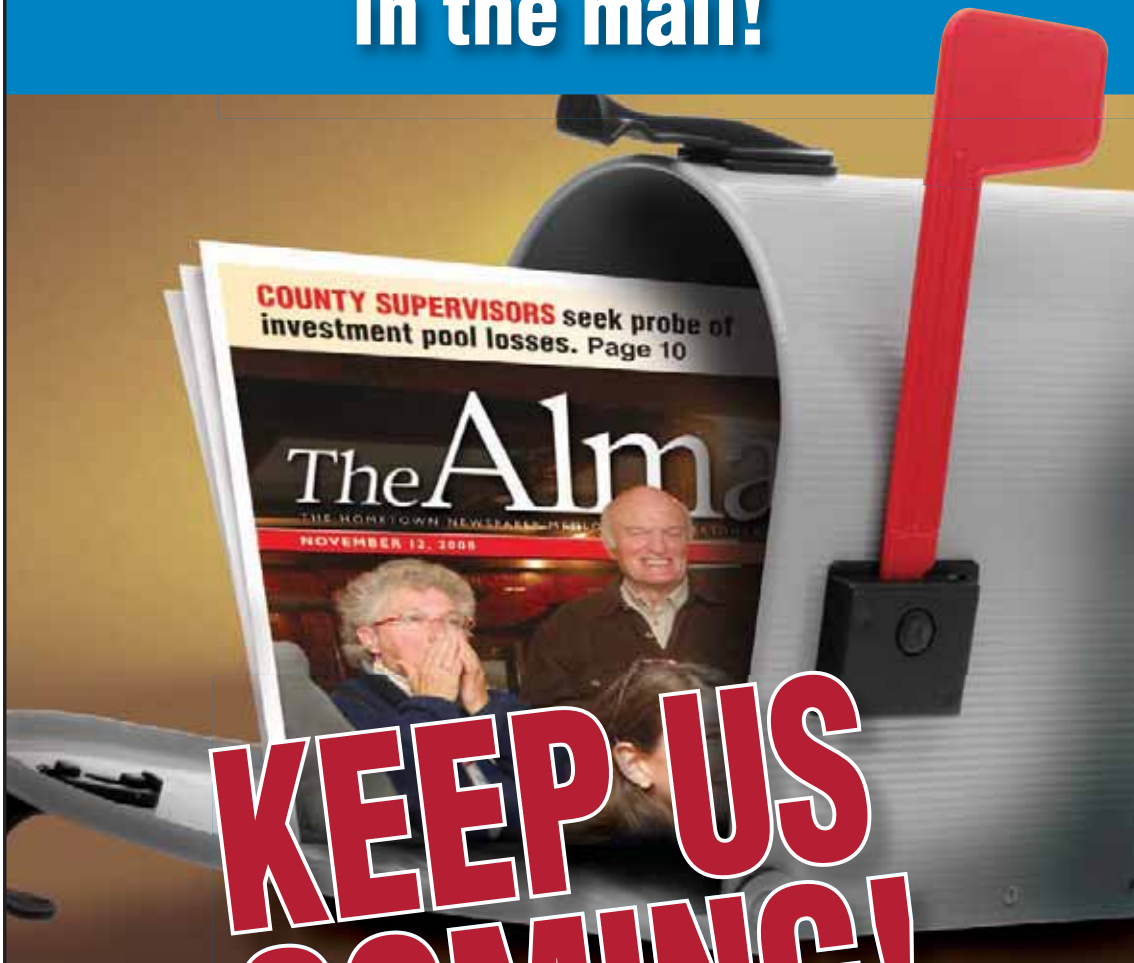
■ Jennifer and Lawrence Mosso, a daughter, Nov. 2, at Sequoia Hospital.

■ Tiffany and Holton Henley, a daughter, Nov. 3, at Sequoia Hospital.

■ Danielle and Jason Golod, a son, Nov. 3, at Sequoia Hospital.



**YES, I want to continue receiving The Almanac in the mail!**



**KEEP US COMING!**

Dear Almanac Reader:

If you enjoy receiving The Almanac and want to continue receiving it, please support us by either becoming a paid subscriber in 2009 or by officially requesting the paper. **(If you have done so already in the last two months, there is no need to do so again.)** With printing and distribution costs rising every year, readers can clearly help us qualify for lower postal rates simply by calling (650) 854-2626 or filling out the form online at [www.TheAlmanacOnline.com/request](http://www.TheAlmanacOnline.com/request).

Thank you for your ongoing support. And be sure to "think, shop and buy" locally this holiday season. Your dining and retail dollars are also so well spent right here at home!

Happy Holidays!

Sincerely,

Tom Gibboney  
Publisher



Keep receiving The Almanac by going online at: [www.TheAlmanacOnline.com/request](http://www.TheAlmanacOnline.com/request)

or call: (650) 854-2626 and say, "Keep my Almanac coming!"

The Almanac

3525 Alameda de las Pulgas  
Menlo Park, CA 94025  
(650) 854-2626 Fax (650) 854-3650  
[TheAlmanacOnline.com](http://TheAlmanacOnline.com)

Family is why **WE DO IT ALL.**



We all feel the same commitment to care for our families. As your good neighbor agent, I can help you meet your insurance needs. Call me today.

**John W McAfee CLU ChFC CPCU, Agent**  
Insurance Lic. #: 0E37462  
846 Portola Rd Suite D  
Portola Valley, CA 94028  
Bus: 650-851-3276

LIKE A GOOD NEIGHBOR



STATE FARM IS THERE.®

statefarm.com®

State Farm Insurance Companies • Home Offices: Bloomington, Illinois

P02640

11/04

**Editor & Publisher**

Tom Gibboney

**Editorial**

**Managing Editor** Richard Hine

**News Editor** Renee Batti

**Lifestyles Editor** Jane Knoerle

**Senior Correspondents**

Marion Softky, Marjorie Mader

**Staff Writers** Andrea Gemmet,

David Boyce, Sean Howell

**Contributors** Barbara Wood,

Kate Daly, Bill Rayburn, Miles

McMullin, Katie Blankenberg

**Special Sections Editors**

Carol Blitzer, Sue Dremann

**Photographer** Danielle Vernon

**Design & Production**

**Design Director** Raul Perez

**Designers** Linda Atilano,

Gail Thoreson, Joanne Lee,

Laura Don, Gary Vennarucci

**Advertising**

**Advertising Manager** Neal Fine

**Display Advertising Sales**

Ella Fleishman

**Real Estate Account**

**Advertising Assistant**

**Coordinator** Jessica Hatzistratis

**Advertising Services**

**Receptionist** Renee Meil

**Circulation, Classified,**

**& Legal Advertising** Bill Rayburn

Published every Wednesday at

3525 Alameda de las Pulgas,

Menlo Park, CA 94025

(650) 854-2626

FAX (650) 854-0677

e-mail news (no photos please) to:

editor@AlmanacNews.com

e-mail photos with captions to:

photo@AlmanacNews.com

e-mail letters to:

letters@AlmanacNews.com

The Almanac, established in September, 1965,

is delivered each week to residents of Menlo

Park, Atherton, Portola Valley and Woodside and

adjacent unincorporated areas of southern San

Mateo County. The Almanac is qualified by decree

of the Superior Court of San Mateo County to

publish public notices of a governmental and legal

nature, as stated in Decree No. 147530, issued

November 9, 1969.

Voluntary subscriptions are available for delivery

to homes in Menlo Park, Atherton, Portola Valley

and Woodside at \$30 per year or \$50 for 2 years.

Subscriptions by businesses or residents outside the

area are \$50 for one year and \$80 for two years.



**WHAT'S YOUR VIEW?**

All views must include a home address and contact phone number. Published letters will also appear on the web site, www.TheAlmanacOnline.com, and occasionally on the Town Square forum.

**TOWN SQUARE FORUM**

POST your views on the Town Square forum at www.TheAlmanacOnline.com

**EMAIL**

your views to: letters@almanacnews.com and note this it is a letter to the editor in the subject line.

**MAIL**

or deliver to: Editor at the Almanac, 3525 Alameda de las Pulgas, Menlo Park, CA 94025.

**CALL**

the Viewpoint desk at 854-2626, ext. 222.

## Why shopping locally pays off

There is a small but determined movement on the Peninsula that is promoting an old-fashioned idea: doing as much of your shopping as possible at locally owned stores.

The concept is not new, but it seems very appropriate now as the country slips into recession and most families are doing everything possible to control their spending. Extravagant is out; frugal is in.

But now, more than ever, the Main Street businesses that we have come to know and love are in dire need of our support. In an economic downturn of the magnitude we are experiencing today, many locally owned stores are vulnerable. Some in our neighborhood have closed, and others may hold on until after the holidays before they turn out the lights.

Long before the economy fizzled, about 100 area merchants formed an organization called Hometown Peninsula to promote shopping at locally owned stores. Led by Clark Kepler, whose bookstore actually closed its doors before an outpouring of local support and financing helped him reopen three years ago, the Hometown group holds monthly meetings, established a Web site (hometownpeninsula.org), and shares information with similar groups around the country.

Mr. Kepler, a second-generation book-seller who must compete with major national chains like Amazon, Borders, and Barnes & Noble, knows what it is like to see customers slip away to companies that may not even have a storefront in the state, or who are able to sell stock for less than he can buy it.

Now he is spreading the word locally, first by allowing his own story to be told in a KQED television documentary titled Paperback Dreams that aired a few weeks ago. And he also was instrumental in bringing Stacy Mitchell, the author of "Big Box Swindle," to speak a few weeks ago to a small group of merchants and residents who want to support their local retailers.

Ms. Mitchell, who works for the Maine-based Institute for

Local Self-Reliance, has become a celebrity in the movement of merchants and others who have organized to fight mega retailers who can destroy small-city downtowns with one store. Wal-Mart is a major focus of Ms. Mitchell's studies. She says the company now controls 10 percent of all retail sales in the U.S. Twenty-five years ago, she said, locally owned independent merchants controlled 50 percent of retail sales. Today, their portion is 25 percent, which has turned many downtowns into a parade of national chain store brands.

Perhaps the most compelling argument for locally owned businesses is that a much higher percentage of dollars spent with them stay in town, while chain store income is sent back to company headquarters, very likely in another state. Research shows that \$68 of \$100 spent locally stays in the community, while only \$43 remains from \$100 spent with a national chain store.

During surveys about the quality of life on the Peninsula, residents say shopping at locally owned stores in pedestrian- and biking-friendly downtowns is one of their top priorities. But in many cases those opportunities are slipping away as residents are seduced by a shopping experience that is based only on price.

Local merchants may charge slightly more, but they know their products, can help you make an informed decision, and will be there to help you if anything goes wrong. And, more often than not, these merchants are your neighbors.

This holiday season, we suggest you shop as much as you can in your own community, with merchants who are dedicated to making you happy, not an absentee board of directors. Big-box stores are a phenomenon that won't go away, but we should remember that our communities would be very shallow places without stores like Kepler's, Draeger's, Flegels and the many more that have settled here, and succeeded in giving you a personal and meaningful shopping experience.



**EDITORIAL**

The opinion of The Almanac

**LETTERS**

Our readers write

**Award against Jobs in Woodside defies logic**

Editor:

What a travesty to read about the misguided court ruling forcing Steve Jobs to pay \$400,000 in legal fees to the Woodside extortion artists masquerading as "historical preservationists."

It defies logic that a small group of self-appointed, "NIMBY terrorists" could trample over individual property rights and prevent Mr. Jobs from enjoying his property.

What they fail to realize is that these litigious actions destroy Woodside property values as saner buyers throw up their hands and locate in Atherton or more friendly communities.

Woodside residents should take up the fight to clear the way for Steve (and countless other Woodside property owners) to recapture

See **LETTERS**, next page



Menlo Park Historical Association

**Our Regional Heritage**

In 1930, the Menlo Park Recorder was a presence on El Camino Real. The newspaper's advertisements listed fryers or broiling chickens for 37 cents a pound, leg of lamb for 39 cents a pound, and lean sliced bacon for 35 cents a pound. A dozen jumbo eggs cost 43 cents, and a gallon of gasoline was 31 cents. And the Milky Way Creamery on Santa Cruz Avenue near the post office sold ice cream cones for a nickel.

LETTERS

Continued from previous page

our constitutional property rights. The Boston Tea Party was started on even less of an overreaching hand by government authorities. The Woodside Farm Boys led by Hans and Franz stand ready to join the cause. Let Steve tear down the existing structure (that he paid for with after-tax, hard-earned money). He has been terrorized long enough.

**Jody Gessow**  
Albion Avenue, Woodside

**Lawyers are the big winners in Jobs case**

Editor:

In regard to the Steve Jobs vs. the Town of Woodside lawsuit, aren't we all aware that the sole winners in the suit are the attorneys?

If Mr. Jobs is dead set on losing more money, he can keep litigating. If wisdom enlightens him, how about selling the house and buying a tract of land with no historic home on it?

Why waste the money on lawyers?

**Mary Perkins**  
Mountain Home Road,  
Woodside

**Break the big box habit; shop close to home**

Editor:

I recently drove past a beautiful toy store right here in Menlo Park to get to Target's toy department to purchase some toys for holiday guests. The thought occurred to me how much I liked having such beautiful stores here but by habit I go to large chains.

It took a jolt of economic bad news to remember to keep as much business in our community as possible. It would be a shame if

**Why district opposes proposed charter school**

By Pat Gemma

The county Board of Education is currently reviewing a petition for a new charter school in the Sequoia Union High School District.

The review comes on the heels of denial of the Everest charter petition by the Sequoia district board. Not only does the Everest petition fail to meet legislative requirements, it falls critically short in demonstrating the interest or ability of Everest to meet the intent of the Charter School Act. Specifically, the legislation intended that charter schools would increase learning opportunities for all students and particularly those identified as low achieving.

Like most school districts, the majority of the Sequoia district's students who score low on state-mandated tests are English-language learners and special education students. Everest is clearly not designed for low-performing students, and in fact Everest focuses selectively on high-achieving, privileged students. Everest proposes offering a solely college preparatory curriculum to prepare all its students for enrollment in a four-year college. The rigors of advanced placement-level coursework

and required mastery of Mandarin would pose significant, if not insurmountable, challenges to many special ed and English language-learning students. In addition, Everest's expectations of parents would represent considerable challenges to many lower socioeconomic families.

Everest is proposed as an alternative to a problem that doesn't exist. The Sequoia district excels in preparing students for college, and in fact 96 percent of the district's most recent graduates went on to college. The Sequoia district's four comprehensive high schools ensure all students of a high-quality education. Still, we recognize that some parents want their students in a small-school setting. These parents may be unaware of the successful small-learning communities available at the district's comprehensive high schools. These "schools-within-a-school" offer students small-learning communities while at the same time providing the benefits of a comprehensive high school, such as sports teams, performing arts programs, clubs and other extracurricular activities with peers who reflect the world students will inherit when they graduate.

Two charter schools with capacity — East

Palo Alto Academy High and East Palo Alto Phoenix Academy — are also available to families seeking a small-school setting. We advocate for support of these schools and for a shared commitment to ensuring these schools achieve a diverse ethnic and academic balance. Not only does the Everest petition compromise the Sequoia district's commitment to maintaining a diverse student body at our comprehensive high schools, the petition risks inhibiting the ability of the two East Palo Alto charter schools to serve an ethnically and academically diverse population.

A high-quality education is available to all students in the Sequoia district. If the Everest petition is denied, no one is hurt. But if the Everest petition is approved, many are hurt. In effect, Everest would take away from the many for the benefit of a few. As stewards of the community's resources and trust, we must remain vigilant in ensuring uncompromising quality and diversity of our schools. Moreover, it is our moral imperative to ensure no further advancement of the racial isolation that has been creeping back into our nation's schools.

**Pat Gemma is superintendent of the Sequoia Union High School District.**



some of our wonderful shops went under because we shoppers head out of town to do our shopping.

This goes for toy stores, grocery stores, drug stores, or any local business that can lose out to huge corporate businesses. Stacy Mitchell's new book, "Big Box Swindle," is certainly something that would be good for Menlo Park shop owners and shoppers alike to read.

**Cecelia Daye**  
Palm Court, Menlo Park

**Tough road ahead if unions hold sway**

Editor:

When asked by another local

newspaper about the proposed 24 percent increase in the Menlo Park trash rates City Council member Kelly Fergusson was quoted as saying "increased fees are just the cost of a clean environment."

Then the same newspaper ran an article about Supervisor Jerry Hill's outrage regarding the proposed trash increases and his demand for a civil grand jury inquiry. Kudos to Jerry Hill.

When I brought this dramatic contrast in attitudes up at a public comment period at last Tuesday's Menlo Park City Council meeting City Manager Glen Rojas tried to sweep Ms. Fergusson's callous remarks under the rug using the

irrational reasoning that since the council had not formally discussed this topic Ms Fergusson's remarks should be expunged as if they never took place.

I can understand a newly appointed city manager desiring to ingratiate himself with the council majority but his remarks just emphasized the fact that the current council majority is owned lock, stock, and barrel by the unions.

I believe Ms. Fergusson and her moveon.org minions will reach, with great gusto, deep into Menlo Park residents' pockets to give the unions whatever they want without regard for the residents.

She seems to have overlooked that the Menlo Park residents are her constituency, not the unions.

We need accountability, not recklessness. In 10 years Menlo Park will be in the same financial straits as Vallejo unless the City Council gets some backbone and learns to put the residents' interests ahead of the unions.

**Hank Lawrence**  
Menlo Park

■ TOWN SQUARE

Post your views and comments on TownSquare: [www.TheAlmanacOnline.com](http://www.TheAlmanacOnline.com)

**Horse park deserves longtime permit**

By Nan Chapman

The Horse Park at Woodside is seeking a long-term extension of its current use permit at a Dec. 10 meeting of the county Planning Commission at 400 County Center, Redwood City.

Since October 2007, the horse park has been operating under a permit which must be renewed every six months. This puts a tremendous strain on both the time and manpower of all of the volunteers involved. There are only two full-time paid employees at the horse park, and the responsibility for the operation and organization of the programs at the facility falls on the shoulders of a dedicated cadre of volunteers.

The park is a 501(c) 3 charitable organization and relies on the generosity of

its supporters. The short-term nature of the permit makes it extremely difficult to ask for major donations from interested individuals, as the future of the park is perceived to be uncertain.

The Horse Park serves thousands of children and adults each year. It is a unique facility which supports all equestrian disciplines and features the only cross country jumping course in Northern California. It is the training ground for Gina Miles, silver medal winner in the last Olympics, and many other Olympic hopefuls. It provides a home for BOK Ranch, a therapeutic riding program, and hundreds of young pony clubbers.

With the current encroachment of large homes onto what once were pastures and farms, it is an affordable facil-



ity which is open to the public and provides a safe environment away from the dangers involved when horses and riders meet motorcycles or bikers on the trails. Additionally, it preserves and protects 272 acres of open space, as well as the wildlife living

therein, and adds to the rural, equestrian flavor of Woodside and neighboring Portola Valley.

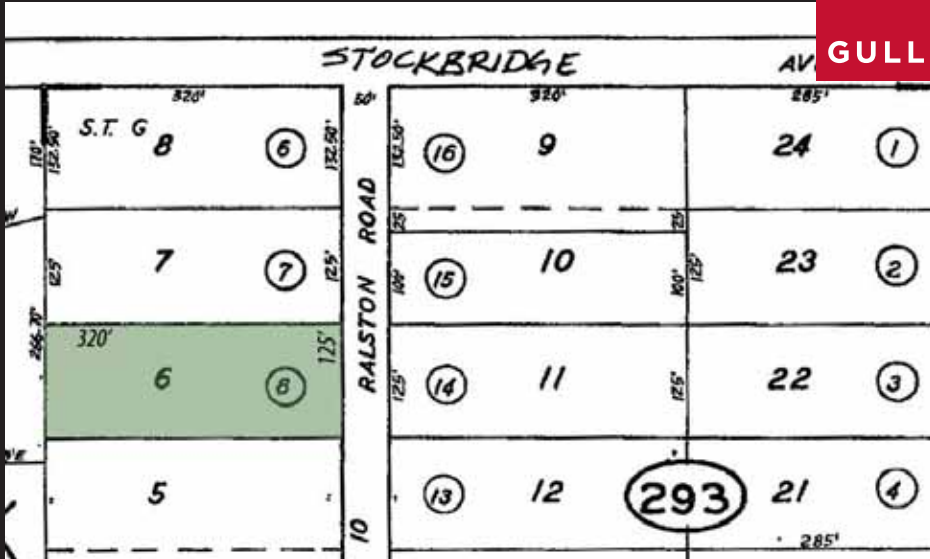
The horse park has complied with dozens of county requirements and has developed a comprehensive land management plan for fire safety, manages

undesirable native species while promoting native grasses, and considers the balance between functional use and aesthetic considerations. It has worked with local environmental and open-space organizations to achieve these ends.

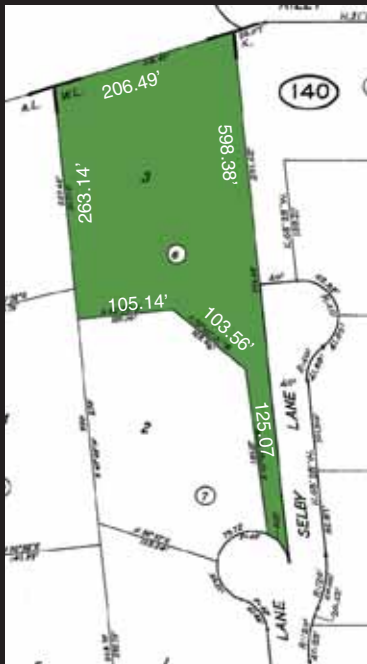
Finally, the Horse Park is an asset to the county and local businesses, in that each time several hundred riders gather to compete, they patronize local hotels, motels, restaurants and merchants. As a past member of the Atherton City Council, I'm well aware of the need for safe, recreational facilities in our area. I encourage all interested parties to voice their support for this project and to attend the meeting on Dec. 10.

**Nan Chapman**  
lives in Woodside.

GULLIXSON



RALSTON ROAD, ATHERTON 4 BEDROOM HOME ON APPROX. 40,000 SQ.FT. (125 X 320) LOT OFFERED AT \$3,395,000



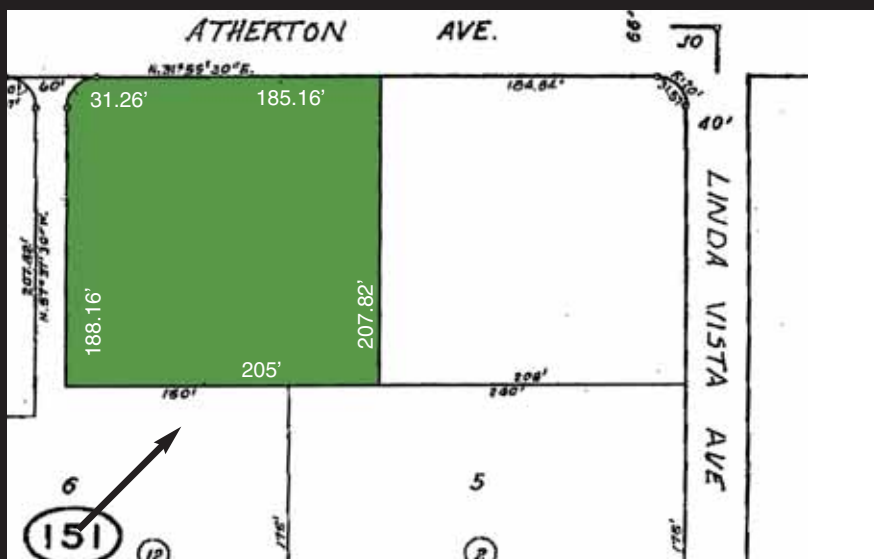
REMODEL OR BUILD NEW ON 1.5+/- ACRES  
SELBY LANE, WEST ATHERTON  
OFFERED AT \$4,500,000



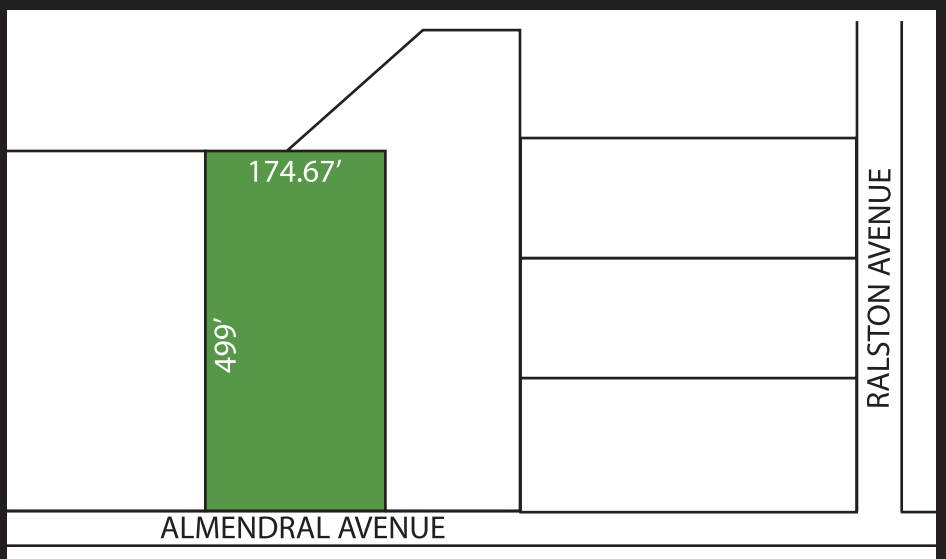
FOR MORE INFORMATION ON ANY OF THESE ATHERTON LOTS VISIT [www.gullixson.com](http://www.gullixson.com)

219 CAMINO AL LAGO ATHERTON  
LEVEL 1.45+/- ACRE  
PRIME MENLO CIRCUS CLUB AREA  
MENLO PARK SCHOOLS

OFFERED AT \$6,480,000



.98+/- ACRES ON ATHERTON AVENUE  
OFFERED AT \$4,695,000



LEVEL 2+/- ACRES ON ALMENDRAL AVENUE, ATHERTON  
OFFERED AT \$10,500,000

COMING SOON! 1 ACRE LOT IN THE PRIME MENLO CIRCUS CLUB AREA OF ATHERTON



[www.gullixson.com](http://www.gullixson.com)

The Gullixson Team has a total Peninsula residential real estate sales volume now in excess of \$1.75 billion dollars.

**BRENT GULLIXSON**

650.543.1194  
650.888.4898 Cell  
bgullixson@apr.com



**MARY GULLIXSON**

650.543.1175  
650.888.0860 Cell  
mgullixson@apr.com

Information deemed reliable, but not guaranteed. Sq. ft. and/or acreage information contained herein has been received from seller, existing reports, appraisals, public records and/or other sources deemed reliable. However, neither seller nor listing agent has verified this information. If this information is important to buyer in determining whether to buy or the purchase price, buyer should conduct buyer's own investigation.