



UPDATED community resource
guide Inside this issue

The Almanac

THE HOMETOWN NEWSPAPER FOR MENLO PARK, ATHERTON, PORTOLA VALLEY AND WOODSIDE

SEPTEMBER 8, 2010 | VOL. 46 NO. 2



WWW.THEALMANACONLINE.COM

Showtime

Jeffrey Adair
returns to the
stage in 'La Cage
Aux Folles'
[See Section 2]



Go to **open.apr.com** for the Bay Area's only complete online open home guide.



PORTOLA VALLEY

Known as the Knole at Lauriston, this property was built in 1991 on approximately 8+/- acres. Originally part of historic Villa Lauriston, this Irish Georgian Estate offers approximately 12,000+/- sf throughout the main residence, guest house, caretaker's quarters, 2 stall barn, and 4 car garage. Grounds provide views over the Bay and Koi pond with gazebo.

\$7,795,000



ATHERTON

French country estate built in 2007 on a 1.01+/-acre lot. Features a kitchen with adjacent family room, central courtyard English gardens, master suite on first floor, and 2bd/2ba guesthouse. Resort-like grounds with Connecticut bluestone terrace, lawn area, sport court, pool and spa, and 2 car garage. Las Lomas schools.

\$7,300,000



PALO ALTO

Quintessential Monterey Colonial 5bd/3.5ba home offers charm and grace of former years and updated convenience of today. Sunlight streams thru generous windows throughout. Updated kitchen with stainless appliances and abundant storage. Large living and family rooms with French doors leading to sun-drenched lush garden.

\$2,600,000

MENLO PARK OFFICE 1550 EL CAMINO REAL, SUITE 100 650.462.1111

WOODSIDE OFFICE 2930 WOODSIDE ROAD 650.529.1111



Photo by Michelle Le/The Almanac

Working on their website (www.EarthSaversClubforKids.com) are, from left, Devon, Kylie and Piper Holland.

Saving the planet pledge by pledge

Holland sisters urge children around the world to join their club

By Jane Knoerle

Almanac Lifestyles Editor

The Holland sisters of Portola Valley are little girls who think big ... really big. Kylie, 11, Devon, 10, and Piper, 8, are founders of the Earth Saver's Club for Kids.

The club started more than two years ago, using a spare room in their house as club-house, but then, as they tell it, "We decided to make a website so kids around the world could join the club, too."

The website (www.EarthSaversClubforKids.com) is a beauty. It was created by River Coyote Designs, with all three Piper kids participating. The girls designed the earth logo and illustrated each segment of the site with colorful crayon drawings.

There are tips to save the earth, projects to do with friends or family, links to organizations saving the earth, games to play and videos from fellow Earth Saver's Club members. There is also a weekly blog.

The club encourages other children to share their art, sto-

ries, poetry, photographs and videos about ways to save the earth.

The text can be translated into 57 languages, from Arabic to Urdu. So far, the club has gained members in Spain, Ireland, and France, as well as the United States.

To join the club, each child is asked to make a pledge.

"Anybody can join the Earth Saver's Club for kids ... all you have to do is promise to do one thing to save the earth. Type in what you are going to do and hit the 'Save the Earth' button," says the website.

Club member Rhianna pledged to eat organic food, Jessie volunteered to take public transportation once a week, another pledged to pick up garbage and do more recycling.

The club made its web debut on Earth Day, April 22, 2010, but hasn't had the girls' full attention this summer. They and their parents have been busy visiting national parks in a recreational vehicle, attending Stanford Sierra Camp, and backpacking at Yosemite. The

girls also attended "Rock 'n' Roll" camp, culminating in a grand finale show with Kylie playing electric violin, Piper on electric guitar, and Devon as vocalist.

With school starting, Kylie will attend Castilleja. Devon will go to Corte Madera, and Piper to Ormondale School in Portola Valley. The girls are involved in a myriad of activities ... almost every kind of sport, plus violin, piano, theater, and girls chorus. They spend time with their pony, Candy, and miniature horse, Pumpkin. However, they intend to devote one day a week to promoting their club.

As part of their tech-savvy generation, each girl has her own laptop. Piper made a PowerPoint presentation to her class when she was in second grade.

Obviously, these youngsters are not the progeny of couch potato parents. Their mom, Linda Yates, has a management consulting background, working with Global 500 companies. She is a Henry Crown Fellow

See **KIDS**, page 7

CALLING ON THE ALMANAC

The Almanac newsroom is at **3525 Alameda de las Pulgas, Menlo Park, CA 94025.**

Classified ads: **854-0858**
 Newsroom: **854-2690**
 Newsroom fax: **854-0677**
 Advertising: **854-2626**
 Advertising fax: **854-3650**

■ E-mail news, information, obituaries and photos (with captions) to: **editor@AlmanacNews.com**
 ■ E-mail letters to the editor to: **letters@AlmanacNews.com**

To request free delivery, or stop delivery, of The Almanac in zip code 94025, 94027, 94028 and the Woodside portion of 94062, call **854-2626**.

THE ALMANAC (ISSN 1097-3095 and USPS 459370) is published every Wednesday by Embarcadero Media, 3525 Alameda de las Pulgas, Menlo Park, CA 94025-6558. Periodicals Postage Paid at Menlo Park, CA and at additional mailing offices. Adjudicated a newspaper of general circulation for San Mateo County, The Almanac is delivered free to homes in Menlo Park, Atherton, Portola Valley and Woodside. Subscriptions for \$60 per year or \$100 per 2 years are welcome. POSTMASTER: Send address changes to the Almanac, 3525 Alameda de las Pulgas, Menlo Park, CA 94025-6558. Copyright ©2010 by Embarcadero Media, All rights reserved. Reproduction without permission is strictly prohibited.

A TASTE OF THE PENINSULA

A cornucopia of restaurants and cafes providing the finest dining from brunch to dessert.

Breakfast, Lunch & Dinner

Vive Sol-Cocina Mexicana

2020 W. El Camino Real, Mtn. View
 (650) 938-2020

Specializing in the Cuisine of Puebla.
 Open daily for lunch and dinner.



Coffee & Tea

Connoisseur Coffee Co.

2801 Middlefield Road, Redwood City
 (650) 369-5250 9am-5:30pm Mon. - Sat.

Coffee roasting & fine teas,
 espresso bar, retail & wholesale.



To Advertise in "A Taste of the Peninsula" call The Almanac 650-854-2626.

SAIL AWAY 2010 CRUISE EVENT



CRUISE SHOWCASE AND SALE

September 19, 2010
 12:00-3:00pm
 Stanford Park Hotel
 100 El Camino Real
 Menlo Park

Sail Away is the Bay Area's premier cruise event. Meet with cruise line representatives, gain expert insights and take advantage of special insider savings and amenities.



Call or click today for your free guest pass to the event.
 (Admission is \$12.50 at the door.)

830 Menlo Ave,
 Menlo Park
 CST #: 2084430-10

(650) 328-2030
 www.2010SailAway.com

Featuring guest representatives from:



OUTDOOR LIVING AT ITS FINEST



LIFETIME LUMBER IS A NEW ALTERNATIVE TO WOOD AND COMPOSITES FOR DECKS, DOCKS, PERGOLAS & FENCES.

There's nothing better than knowing your family and home are safe. LifeTime Lumber offers a complete outdoor solution with technologically advanced products. We manufacture fire-safe and sustainable building products that promote safer and healthier living.

Unlike most composite products, LifeTime Lumber contains no wood, so it won't deteriorate over time. In addition, LifeTime Lumber is a green product — containing 60% recycled material. Our products require little maintenance, and they come with a Limited Lifetime Warranty.



BEAUTIFUL. GREEN. FOREVER.



Scientific Certification Systems SCS-MC-01356.
Certified minimum pre-consumer 60% recycled content.

Visit www.LifeTimeLumber.com for more information, and call to find your local retailer 877.285.4338

Sale Dates: Sep 8, 9, 10, 11

ROBERTS MARKET

SINCE 1889

3015 Woodside Road Woodside, 650-851-1511
4420 Alpine Road Portola Valley, 650-851-1711
Open 6:30AM - 8PM

Fresh Produce

Whole or Cut
**SEEDLESS
WATERMELON**

29¢
lb

Tasty
CONCORD GRAPES

\$1⁹⁹
lb

Loose, Clip Top
CARROTS

49¢
lb

Deli Department

NEW! Nitrate Free

Zoe's Meats

Garlic & Herb Turkey **\$12⁹⁹** lb.

Applewood Smoked Ham **\$11⁹⁹** lb

Wine Cured Salami **\$12⁹⁹** lb.

Perfect for Sandwiches, Snacks, and Picnics!

Meat and Seafood

ROCK COD (SNAPPER)

\$8⁹⁸
lb

PRIME RIB W/BONE

\$9⁹⁸
lb

Wine and Spirits

More Warm Weather Whites

2008 St. Francis Chardonnay, Sonoma

Reg. \$16.99 Sale \$11.99

2009 J Pinot Gris, California

Reg. \$13.99 Sale \$11.99

2009 Kim Crawford Sauvignon Blanc, Marlborough

Reg. \$ 16.99 Sale \$13.99

Sale prices are net and do not qualify for quantity discounts.

On Sale Grocery

64oz.
**NEWMAN'S OWN ALL
NATURAL LEMONADE** **\$1⁶⁹**

5oz.—Pepperoni
**CELESTE FOUR CHEESE
PIZZA** **99¢**

9oz.
**BACK TO NATURE
CHOCOLATE CHUNK COOKIES** **\$2⁶⁹**

30oz.
**BEST FOODS
MAYONNAISE** **\$4¹⁹**

5oz
**ARM & HAMMER 2X
LAUNDRY DETERGENT** **\$4⁹⁹**

Local News

MENLO PARK | AHERTON | WOODSIDE | PORTOLA VALLEY

Woodside: 25 bicyclists cited for running stop sign

By Kate Daily

Special to the Almanac

San Mateo County Sheriff's deputies cited 25 bicyclists on charges of failing to come to a stop at a busy intersection in Woodside on Saturday, Aug. 28.

Lt. Larry Schumaker with the Sheriff's Office said two motorcycle deputies were in the parking lot at the intersection of Canada and Woodside roads at around 8:30 a.m. when they saw a large group of bicyclists turn west onto Woodside Road. "The majority ran the stop sign," he said.

The bicyclists were pulled over, and lined up alongside the road about a block from there on Woodside Road near Albion Avenue. Three more deputies drove up in cars to help write tickets.

A neighbor, Michael Sieber, noticed the commotion and ended up taking pictures and speaking to the deputies.

A bicyclist himself, Mr. Sieber has lots of experience with the

four-stop-sign intersection near Roberts market. He thanked the deputies for stopping the bicyclists. For safety reasons, he said, "I don't like the guys rolling through."

Andrew Hsu, a board member of the Peninsula Velo Cycling Club, said: "Our estimate is about 30 to 40 bicyclists were involved, and a vast majority are club members."

"One of the informal group rides leaves Hwy. 92 and Canada Road around 8:15 a.m. on Saturdays," he said, and that's the group that attracted the deputies' attention.

The club was founded in 1974 and has about 150 members, he said.

"It is the largest performance-oriented cycling club in the Mid-peninsula," he said. "Many of our members race ... and share the passion to maintain fitness."

"Our club policy is to obey the rules of the road," he added. "We have never condoned running stop signs or stop lights."

"We're all fortunate to live in this area," he said. He has noticed a



Sheriff's deputies pulled over 25 bicyclists on Saturday morning, Aug. 28, for running a stop sign at the intersection of Canada and Woodside roads in Woodside. This photo is by a nearby resident, Michael Sieber.

recent increase in riders in Woodside, and said that in "sharing these roads, we want to be respectful in that community."

Since the ticketing incident, he said, "There has been some discussion about rerouting our usual informal route to have less impact on the community."

Mr. Hsu wasn't riding with the group that morning, but called the "mass tickets" a "rather Draconian effort."

"There are those who are going

to court to contest it whether the officer saw each individual roll through or not. It's easy to assume everyone didn't stop," he said.

Lt. Schumaker said the deputies were just making "an enforcement stop" that day, and that "it's kind of like a daily occurrence, usually six to 10 bicyclists" are cited for traffic violations on any given day.

"Bicyclists are required to follow the vehicle code," he noted.

Large groups of bikes are supposed to "yield as we all do, and

take turns" at intersections, just as cars do, he said.

He paraphrased the two sections that apply in this case: "21200(a), bicyclists are like vehicles upon a roadway, and 22450(a) failure to stop at a stop sign."

A spokesperson in the traffic division of the San Mateo County Superior Court said failing to stop at a stop sign "is a moving violation, an infraction. The fine depends on the case, on the record of the person." ■

Court's ruling re-energizes pension reform advocates

By Sandy Brundage

Almanac Staff Writer

The November elections in Menlo Park will give voters a chance to decide whether the pension initiative, called Measure L on the ballot, should pass.

A judge ruled on Aug. 27 that the initiative will remain on the ballot, despite a lawsuit filed to stop it.

Measure L seeks to set a retirement age for new, non-police public employees at 60 (five years later than current employees) and set pension payments at levels lower than current employees.

City Council candidate Chuck Bernstein, who helped organize a grassroots campaign to get the pension initiative into the hands of voters, said he was happy but not surprised by the decision.

"It allows us to re-energize volunteers. The hold was hard, with the uncertainty," he said, referring to the two-week wait for a ruling after the court heard arguments on Aug. 12.

San Mateo County Superior Court Judge George Miram said in his decision that the government code that allows voter input on pension systems "raises serious doubt as to whether the Legislature intended to foreclose voter involve-

ment in pensions as the petitioners argue."

Two unions, Service Employees International Union Local 521 (SEIU) and American Federation of State County and Municipal Employees Local 829 (AFSCME), filed the lawsuit to argue that only the City Council has the authority to change pension compensation.

Judge Miram rejected that argument, stating that they did not prove that voters are not allowed to "instruct their city representatives."

Noting the costs of the city appealing a loss would exceed the \$18,000 cost of the election, Judge Miram said the "wiser course" would be a post-election review.

The Aug. 27 ruling doesn't address whether the initiative is a legal route to pension reform — which means another lawsuit could be filed post-election.

Mr. Bernstein said that if the initiative passes with 60 to 70 percent of the vote, that he would expect the unions to be reasonable. "It would be a very bad public relations ploy on their part to oppose it."

Attorney Richard Miadich, who represents one of the plaintiffs, said the ultimate validity of the measure would not be decided until after the election. ■



Photo by Michelle Le/The Almanac

"Spring," a bronze mare sculpture that weighs 1,200 pounds, is hoisted into place Aug. 31 on Village Hill along Woodside Road in Woodside. See related photo on Page 6.

Bronze horses hoisted onto Woodside hill

Bronze casts of two horses — a mare and a foal — now stand on Village Hill along Woodside Road in Woodside after about two years of planning and fundraising.

The casts were hoisted into place by a crane on Tuesday,

Aug. 31.

Donors contributed \$104,000 toward the \$108,000 needed to pay for the two sculptures by Colorado-based artist Veryl Goodnight.

The Woodside Landscape Committee welcomes dona-

tions for the final \$4,000, said co-chair Phyrne Osborne. Checks may be mailed to the Woodside Community Foundation, P.O. Box 620494, Woodside, CA 94062.

See **BRONZE**, page 6

SHS

SACRED HEART SCHOOLS

PRESCHOOL AND KINDERGARTEN



Sacred Heart Schools welcomes the community to an open house to tour the beautifully renovated, Preschool & Kindergarten building.

Open House Information

October 16, 2010, 10:30 a.m. - noon, 150 Valparaiso, Atherton

(Preschool/Kindergarten Building, Emilie Avenue Entrance)

Sacred Heart Schools, Preschool & Kindergarten accepts enrollment applications on an ongoing basis throughout the school year and offers the following:

- Montessori Curriculum
- Education of the Whole Child
- Experienced teachers with Masters Degrees
- 12:1 Student/Teacher Ratio
- Preschool through Grade 12 on One Campus

150 Valparaiso Avenue Atherton, CA 94027
650.322.1866 www.shschools.org



Photo by Michelle Le/The Almanac

Firm footing

Bronze casts of two horses — a mare and a foal — now stand on Village Hill along Woodside Road in Woodside after about two years of planning and fundraising. **See picture and story on Page 5.**

BRONZE

continued from page 5

The mare, named “Spring,” is bronze and weighs 1,200 pounds, about what its living counterpart would weigh. The bronze cast of the foal, named “Sprite,” weighs

300 pounds. The casts are anchored to concrete slabs on Village Hill.

Donations were raised from residents of a town that is proud of, and actively promotes, its equestrian heritage and lifestyle.

8 Workshop Series by Harrell Remodeling

Trends: Kitchens, Baths + Beyond

Our class covers the step-by-step details, decisions and considerations that are part of transforming a home into the special place you've always wanted.

- Planning a kitchen that suits you
- Timeless design for longevity
- Flexible space and functionality
- Master suites, baths and spa retreats
- Energy efficient and low maintenance choices



We never forget it's your home.®



Harrell Remodeling
Design + Build

Harrell Remodeling Design Center
1954 Old Middlefield Way
Mountain View, CA 94043
(650) 230-2900

License: B479799.
Our Design Center is 85% solar powered.

harrell-remodeling.com

Trends: Kitchens, Baths & Beyond

Wednesday September 22

6:30pm - 8:30pm

Registration and light dinner at 6:15pm
Harrell Design Center, Mountain View

Whole House Remodels

Saturday September 25

10:00am - 12:30pm

Keplers Books, Menlo Park

Call or go online to register today.

Students win movie, music tech awards

Five students from the Boys & Girls Clubs of the Peninsula recently won national recognition for their accomplishments in video and music production. They were named national winners in the Eighth Annual Digital Arts Festivals, sponsored by the Boys & Girls Clubs of America.

Richard Kaho, Alexis Garcia, Betzy Padilla, Ulysses Torres and Ruben Banegas competed with other members of Boys & Girls Clubs across the nation to bring home awards in the Movie Tech and Music Tech categories.

Richard, Alexis and Betzy won for their video, “Be Great Graduate,” which portrayed their personal experiences with

the goal of inspiring others to graduate from high school.

“Amazing” and “Sky’s the Limit,” songs writing by Ulysses and Ruben, respectively, encouraged listeners to make positive changes and follow their dreams.

For Richard, Alexis and Betzy, an all-expenses-paid trip to Atlanta included workshops with students at the Savannah College of Art and Design and a behind-the-scenes look at creating cartoons for Cartoon Network.

Ulysses and Ruben earned \$500 for the Mervin G. Morris Branch of the Boys & Girls Clubs of the Peninsula to plan a celebration, and each received a \$75 Best Buy gift card and a plaque for their accomplishments.

Parking changes coming to downtown

■ In a test, the city will restrict parking to one hour along downtown Santa Cruz Avenue.

By Sandy Brundage

Almanac Staff Writer

The New Year will herald new parking rules for Menlo Park. The City Council voted 4-1 on Aug. 31 to test a plan that changes time restrictions on downtown parking areas after the holiday season.

Two-hour parking along downtown Santa Cruz Avenue will be cut to one hour, with 15- to 20-minute spots added at each corner. Other streets, such as Oak Grove and Menlo Avenue, would double the current one-hour restriction to two hours.

Not everyone was thrilled about the changes. Shawn Blackburn, owner of Visions Artwear & Salon at 644 Santa Cruz Ave., said the plan doesn't address the need of customers to park for longer than two hours.

"Most business customers are there for about two hours, on pins and needles the whole time, and

sometimes they don't make it in time," said Mr. Blackburn. "It's hard to get customers, hard to keep customers, hard to keep them happy, and they're not happy when they spend \$100 on their hair and then get a parking ticket."

Wilbur Smith Associates conducted a study that indicated that the two main complaints were the number of two-hour spots taken by employees, who then shuffle their cars from spot to spot to avoid a \$42 ticket, and a lack of parking options for downtown trips lasting longer than two hours, since all eight parking plazas carry a one- to two-hour limit.

The \$55,000 redesign would create 26 unrestricted spaces on the periphery of downtown to encourage employees to park farther away. In addition, annual permits for plaza two, between Crane Street and Chestnut Street off Oak Grove Avenue, will be

reduced by half, and re-allocated among the other plazas.

Parking plazas one, between El Camino Real and Chestnut Street, and five, at the intersection of Santa Cruz Avenue and Evelyn Street, would provide two hours of free parking, then charge an hourly rate, giving people the option to buy more time.

"This has been a long time coming. The nastiest letters we get are from people who get parking tickets they think are unfair," said Councilman Heyward Robinson.

The council asked city staff to ensure there would be a 30-day grace period once the city implements the changes in January. Police would give out only warning notices with maps depicting the new parking scheme instead of tickets.

Remaining true to form, Councilman Andy Cohen dissented, stating he wasn't confident the plan would work. "I'm fully ready to eat my hat when you guys turn out to be right," he said. ■

Menlo Park smoking ban: it's back

By Sandy Brundage

Almanac Staff Writer

For all those holding their breath until Menlo Park's newest smoking ban gets approved, the wait is almost over. The City Council will consider the ordinance at its next meeting, on Sept. 14.

A staff report circulated on Sept. 2 highlighted a few revisions made since the city last considered the ordinance in March.

The list of "no smoking" zones expands to the common areas of apartments and other shared multi-unit housing, including condominiums owned by the occupants.

According to the new language of the ordinance, landlords can't be held liable for a tenant smoking in a rented apartment if secondhand smoke harms another resident. But the tenant can now sue the other resident if

"adversely impacted" by their smoking.

The ordinance would still ban smoking in most public areas, such as bus stops, parks, and ticket lines.

However, the revised wording allows smokers to light up on sidewalks, or other unenclosed spaces like streets or open outdoor areas set aside for that purpose by restaurants and tobacco retailers.

Barbara Franklin, who pushed the council for a new ordinance after smelling a neighbor's smoke while inside her own condo, asked council members on Aug. 31 when the ordinance would return to the agenda. "September 14?" she said. "Then on September 14 I shall return."

If the City Council approves the ordinance, it would go into effect 30 days later.

Go to is.gd/eS5M1 (case-sensitive) to see the staff report. ■

Church creates choir for children

Rehearsals begin at 4 p.m. Monday, Sept. 13, for a new children's choir for grades 3, 4 and 5 in the Menlo Park area.

The director is Maureen H. Fromme, music director of Bethany Lutheran Church in Menlo Park, where rehearsals will be held.

Go to bethany-mp.org/kidschoir or call Ms. Fromme at 967-3764 for more information about the Cantate Dolce Children's Chorale, including details about auditions and fees.

express

Get local
news updates

FREE

in your e-mail
inbox daily.

Sign up today
at

TheAlmanacOnline.com

"the greenest house in America" — a LEED Platinum house in Portola Valley. They hope to move into the house in January.

After listening to the dazzling array of activities and ambitions of these young ladies, this reporter asked, "Which one of you is going to become president of the United States?" "Not me," says Kylie. "I want to find a cure for cancer." ■

KIDS

continued from page 3

with the Aspen Institute and has served on several private, public and nonprofit boards. Their dad, Paul Holland, is a venture capitalist who coordinates the clean-tech practice for Foundation Capital in Menlo Park.

The family is living temporarily with Linda's parents, Don and Jane Yates, while they are building

REAL ESTATE Q&A

by Gloria Darke



This Old House

Dear Gloria, We have made an offer on a piece of property which has an old house on it. Our plan is to tear the house down and build new. Our agent has advised that we have an inspection on the house even though we don't want to keep it. These inspections cost a lot of money so I am wondering what the point is? Lois P

Dear Lois, Your agent has probably experienced situations where buyers will enter into a contract with one idea in mind and then decide on a different direction. Should you decide to keep the house and it turns out that it has a lot of problems you could point the finger at your agent and claim that you

were not advised to get an inspection. An inspection will highlight issues that are unknown and undisclosed so that you are entering into the transaction with all the known defects. Your agent is somewhat protected if you sign a waiver stating that you were advised but decline. I would agree that you should go ahead and pay the few hundred dollars and get an inspection. It takes several months to get plans drawn up and get them approved by the planning department before you can even begin. You may wish to rent out the property or even move in yourself. The inspection will also note if there is asbestos, which requires a different kind of removal than just tearing the house down.

For answers to any questions you may have on real estate, you may e-mail me at gdarke@apr.com or call 462-1111, Alain Pinel Realtors. I also offer a freemarket analysis of your property.

Twin Research Registry™
at SRI International
PARTNERING TO ADVANCE SCIENCE



Are you a twin? And are you interested in getting a free flu shot?

The Twin Research Registry™ at SRI International seeks healthy fraternal and identical twins* (*especially identical twins aged 70-100*) to participate in a flu vaccine study led by Stanford University and sponsored by the National Institutes of Health.

Call 1-800-SRI-TWIN (1-800-774-8946)
E-mail: twin@sri.com
or sign up at www.sri.com/twin.

Receive a free flu vaccine and help scientists develop better vaccines at the same time.

* Age groups and types of twins include: 8-17 identical; 18-30 fraternal or identical; 40-59 fraternal or identical; 70-100 identical.

Volunteers will receive compensation and a free flu shot at Stanford, and will be required to return for two to three follow-up visits. The study offers the licensed, approved vaccine that will be given to the public this flu season, which covers both the seasonal and the H1N1 flu. SRI International is a world-leading nonprofit research organization based in Menlo Park, CA. www.sri.com

More students, less homework as Las Lomas schools reopen

By Renee Batti

Almanac News Editor

Students at Las Lomas School had a new principal to greet them, and La Entrada students were able to feast their eyes on a new mural and a recently installed statue representing their school mascot — a leopard — when they returned to their campuses on Aug. 23.

Students at both schools also might have noticed more peers in most of their classes, with class size rising between two and four students at every grade level this year.

Sue Sartor began her tenure as principal of Las Lomas in Atherton, the Las Lomas School District's K-3 school. The school's vice principal until last June, Ms. Sartor replaces Gerald Traynor, who retired in June.

Because of budgetary concerns, the district decided not to appoint a new assistant principal at the school, choosing instead to tap the services of "a couple of experienced teachers" to help with some administrative duties, according to District Superintendent Eric Hartwig. "We were able to free (their schedules) up a little bit," he said, adding that the new system "is saving us quite a bit of money."

Mr. Hartwig said the school has seen some physical improvements since June, including new sidewalks and a crosswalk for added safety.

At La Entrada in Menlo Park, which serves students from grades 4 through 8, the new campus artwork is the result of

student projects under the guidance of teacher Janet Gregori.

Also at La Entrada, a new policy has gone into effect this school year easing up a bit on the amount of time students are expected to spend on homework. The policy is an attempt "to not have the students and teachers over-work themselves," Mr. Hartwig said. "We want to keep things at a normal, productive pace, and to keep learning fun," he said.

The homework policy sets expectations that range from 45 to 60 minutes a night for fourth-graders, to two hours for eighth-graders.

Go to is.gd/eSiNv (case-sensitive) to see the new La Entrada homework policy.

The larger class sizes are the result of a growing enrollment coupled with the decision by the school board to save money by not replacing a number of teachers who recently left the district, Mr. Hartwig said.

The budget crunch has prompted the board to consider asking voters to approve a new parcel tax. At a recent meeting, board members agreed to explore that possibility by hiring a pollster to test voter opinion.

Projections just before school opened showed enrollment at the two schools growing by 85 students: from 1,234 last school year to 1,319 in the new school year. Las Lomas enrollment was projected at 644, and La Entrada, at 675, Mr. Hartwig said. ■



First-grade Brownie Troop 31538 of Oak Knoll School with Scott Lohmann, co-president of the Menlo Park-Atherton Education Foundation, and Lois Giovacchini, executive director. The Brownies donated their spring cookie sales money, \$300, to the foundation's Fund-A-Teacher initiative.

Brownie troop helps Fund-A-Teacher

This information was submitted by Parke Treadway of the Menlo Park-Atherton Education Foundation.

Local first-grade Brownie Troop 31538 of Oak Knoll School donated its spring cookie sales money — \$300 — to the Menlo Park-Atherton Educational Foundation's Fund-A-Teacher initiative.

The foundation created Fund-A-Teacher in response to the Menlo Park City School District's preliminary layoff of 14 teachers

as a way of managing its large budget deficit. The initial goal of the Fund-A-Teacher program was to raise \$100,000, the cost of one experienced teacher with full benefits, and give the fund total to the district exclusively for teacher salaries.

At the foundation's Spring Event, parents, teachers, administrators and other concerned community members stepped forward and brought the Fund-A-Teacher total to

over \$137,000.

Fortunately, the larger community of district voters agreed that supporting our school teachers is a value we all share, and passed parcel tax Measure C, with 76 percent voting yes.

Thanks to the Fund-A-Teacher gift and the additional revenue Measure C will provide, district Superintendent Ken Ranella has vowed to rescind the layoff notices and keep teachers in the classroom.

Firefighters union rejects latest offer

By Sandy Brundage

Almanac Staff Writer

It's back again (and again) to the bargaining table for firefighters with the Menlo Park Fire Protection District, which covers Atherton, East Palo Alto, and unincorporated areas, as well as Menlo Park.

The union rejected the latest offer from the district, tendered in a letter on Aug. 18, which included an additional \$750 per month for health and post-employment benefits, but did not dangle a pay raise.

Peter Ohtaki, the district's board

president and Menlo Park City Council candidate, said the offer was made while residents and other fire departments are enduring a recession.

"The District promises no layoffs or furloughs through next year due to prudent financial planning. We've spent a lot of time preparing an offer that is attractive to our firefighters and fair to taxpayers," he said.

The union rejected the offer by Aug. 30. The district's firefighters also filed a lawsuit in July over the issue of overtime pay for time spent

picking up equipment before and after their shifts start. Last year the district decided to replace salaries with hourly wages, leading to the overtime dispute.

John Wurdinger, president of the Menlo Park division of the International Association of Firefighters union, declined to specify the reasons for the rejection. When asked if the firefighters voted to reject the offer, or whether union leaders decided alone, he replied, "The firefighters responded to the [district's] letter."

Both parties previously scheduled a negotiation meeting for Sept. 13. ■

■ BRIEFS

Cafe Scientifique: fate of California salmon

Steven Lindley, an ecologist with the National Oceanic and Atmospheric Administration, will talk about threats facing wild California salmon at 6 p.m. Tuesday, Sept. 14, at SRI International in Menlo Park.

The occasion is the September meeting of Cafe Scientifique, a free monthly meeting, where the public can explore and debate scientific and technological issues.

Many species of salmon have been in such grave danger that authorities banned salmon fishing altogether off the California coast for the 2008 and 2009 fishing seasons. The economic impact on commercial fishermen was severe, and Gov. Arnold Schwarzenegger sought disaster relief of \$290 million, but many of the affected fishermen reportedly supported the closure, according to a Cafe statement.

Go to cafescisv.org for direc-

tions, information on parking, and other details.

Circus comes to Portola Valley Library

The Swan Brothers Circus, which consists of two brothers juggling, doing magic tricks, and "clowning around," is coming to the Portola Valley Library at 4:30 p.m. Thursday, Sept. 9.

All ages are invited to the free performance funded by Friends of the Portola Valley Library. The library is located at 765 Portola Road in Portola Valley.

Commission counters Beltramo's townhome proposal

By Sandy Brundage

Almanac Staff Writer

The ball's back in the developer's court after the Menlo Park Housing Commission unanimously agreed on a counterproposal Sept. 1 to Beltramo's Investment Co. The city and developer are negotiating the number of below

market rate (BMR) apartments to be included among the 16 townhomes planned for 1460 El Camino Real.

Although the original approved plan included three BMR units, the Beltramos asked that in light of declining real estate values, only one be set aside, with 10 to 20 percent of sales revenue on

the remaining units going back to the city to compensate for not including two more.

Douglas Frederick, the city's housing manager, said the commission asked for a higher percentage of revenue if construction costs declined.

With the exception of that one

change, the five commissioners agreed to accept a previous offer from Beltramo's of in-lieu fees on five market-rate townhomes, \$207,348 in commercial linkage fees, and a cut of the revenue if sales prices exceed \$1 million.

If Beltramo's accepts the counterproposal, the Planning Commission and City Council would need to approve the final arrangement. ■



Photo by Dave Boyce/The Almanac

Portola Valley Town Council members, from left, John Richards, Maryann Moise Derwin and Ted Driscoll experiment with a paperless meeting.

Going paperless in Portola Valley?

By Dave Boyce
Almanac Staff Writer

The glow of electronic display screens lit up the faces of Portola Valley Town Council members at their Aug. 25 meeting as they experimented with an agenda that, for the first time, lacked the ability to administer a paper cut.

Using their personal laptop computers, council members downloaded copies of the agenda from the town server beforehand so they could electronically page through them together in the manner of a paper document, but without the paper.

If the council decides to go ahead with this technology — a discussion is set for Sept. 22 — future meetings will have to involve a wireless connection, Mayor Steve Toben said in an

e-mail. That way, each council member and laptop-equipped members of the public will have access to an online agenda and packet that everyone views together — as is done with paper agendas and packets today.

That would require upgrading the Town Center's wireless capabilities so that they reach into the Historic Schoolhouse, where the council meets.

The plans would include a paper copy to be available at Town Hall and another at the library, according to Brandi deGarmeaux, the town's coordinator for environmental initiatives.

Asked to comment on the experience, Mr. Toben said he was pleased "at how smoothly the paperless packet experiment went. I liked it."

Councilwomen Maryann Derwin and Ann Wengert cited the

unfamiliarity of making bookmarks, an online counterpart to self-stick notes.

Ms. Derwin said she reluctantly accepts the move away from paper as inevitable. "For me there is just no substitute for the feel of paper against a fingertip or the sound of a razor sharp felt tip pen against a page," she said.

"If we had Wi-Fi in the room," she added, "I know I would be tempted to check my e-mail during patches of long discussions."

Councilman Ted Driscoll noted the ease of searching a paperless document and that he could avoid recycling "99 percent" of his packet every two weeks. But those pluses were offset by the difficulty of seeing an entire page at an easily readable type size, he said.

Apple iPads may improve readability, council members said. ■

Portola Valley talk: More than one way to fight wildfire

By Dave Boyce
Almanac Staff Writer

There is more than one way for residents in wooded communities to respond to a wildfire, according to Scott Stephens, an associate professor of fire science at the University of California at Berkeley.

Mr. Stephens is set to speak about wildfire risks at the Portola Valley community hall in Town Center at 3 p.m. Wednesday, Sept. 15.

Mr. Stephens, the co-author of several white papers on wildfires, is a student of the Australian model for residents confronting a wildfire — prepare, go early or stay-and-defend — versus the typical U.S. approach in which all residents are evacuated and all the firefighting is done by professionals.

While no methodology is risk-free, Mr. Stephens and his colleagues wrote, the evacuation model can put lives in more danger;

there have been cases in U.S. wildfires in which residents were warned too late or not warned at all, tried to escape, and got trapped and died in their vehicles when the fire overran them.

The Australian model has been adopted by two U.S. communities, the Painted Rocks Fire District in Montana and Rancho Santa Fe in California, one paper said, but also noted that "some California communities are so



Scott Stephens

vulnerable that a 'prepare and leave early' strategy may be the only option."

Mr. Stephens' presentation, "From Australia to the Santa Cruz Mountains: fire, history, and lessons learned," is intended for homeowners, town staff and Town Council members, according to a flier from Fire Marshal Denise Enea of the Woodside Fire Protection District.

Go to is.gd/ePJhL and is.gd/ePJoq (case sensitive) to view two of several white papers at the home page of the Stephens Lab at is.gd/ePQ59.

"Dr. Stephens is a wonderful speaker on the topic of wildfire progressions in the urban interface," Ms. Enea said in an e-mail, and noted that he has testified to Congress on fire-hazard reduction. ■

APPLEWOOD COUPON

Have a Party! Applewood Now Delivery! FREE DELIVERY!

\$2 OFF

Medium or Large Size Pizza

APPLEWOOD COUPON

Have a Party! Applewood Now Delivery! FREE DELIVERY!

\$3 OFF

Extra Large or Family Size Pizza

Gluten-Free Pizza Now Available!

These Coupon Offers are available Daily between 2-6pm

New Hours: Open Mon-Sat 11am – 10pm • Sun 11am – 9pm
1001 El Camino Real, Menlo Park (650) 324-3486
www.applewoodpizza.com

San Mateo County Fire Safe

Presents a special speaker event

About Wildfire

“From Australia to the Santa Cruz Mountains: fire, history, and lessons learned.”

— By Dr. Scott Stephens —

September 15, 2010





Dr. Scott Stephens is an Associate Professor of Fire Sciences at the University of California Berkeley. He works in the Stephens Lab: Research and Education in Wildfire Science. He has also written and submitted several congressional testimonies including: **Fire Hazard Reduction** (June 2000) **Southern California Fires** (Dec 2003) **Sierra Nevada Forest Plan** (February 2004)

EVENT DETAILS:

LOCATION: Portola Valley Community Hall, 765 Portola Rd.

TIME: 3:00-4:30pm • **COST:** Free

Who should attend?

- Property Owners • Council Members
- Town Planners • Fire Service Personnel

WEDDINGS

Lockwood-Flores

Jessica Lynn Lockwood and Ricardo Manuel Flores were married July 4, the sixth anniversary of when they met, at Crystal Springs Reservoir. Officiating was Richard Cline, mayor of Menlo Park and close family friend. A reception followed at the Pacific Athletic Club.

The bride's sister, Courtney Lockwood, was maid of honor. Andrew White was best man.

The bride, daughter of Chris and Margot Lockwood, graduated from UC Santa Barbara with a degree in political science. She also obtained a bachelor's degree in nursing from Samuel Merritt University in Oakland. She is a registered nurse for a Stanford affiliate clinic.

The bridegroom, son of Miguel and Alma Flores, graduated from San Jose State with a bachelor's degree in advertising. He works for an online travel agency.



Jessica Lynn Lockwood and Ricardo Manuel Flores

The couple met July 4, 2004, at Lake Don Pedro. Their first date was to a San Francisco Giants game and they continue to spend many evenings at AT&T Park.

They recently purchased their first home together and are living in Menlo Park.

Unions silent about candidate meetings

By Sandy Brundage

Almanac Staff Writer

Menlo Park's six City Council hopefuls are now wading through the nearly endless series of interviews each candidate undergoes before the elections on Nov. 2.

But whether the public has a right to know about the interviews seems to depend on who's doing the interviewing.

"This is like a marathon; it just keeps going," said candidate Chuck Bernstein, who was in the middle of answering questions for the Democratic Party, Silicon Valley Association of Realtors — and two local unions.

The San Mateo County Labor Council and Service Employees International Union Local 521 (SEIU) grabbed the first two weeks of September to grill candidates for possible endorsement.

However, the unions refused to identify who agreed to participate. Shelley Kessler, executive secretary and treasurer for the San Mateo Labor Council, said the interviews are "internal processes" and that names of the

candidates attending wouldn't be released to the public.

That extends to the questionnaires candidates were asked to fill out before meeting with union representatives face-to-face.

SEIU spokesman Brian O'Neill explained the secrecy was meant to safeguard the integrity of the interviews. "We do not believe it's fair that the candidates may use their opponents' answers to our questions against them during their campaign. To be fair, we asked the candidates to keep the questions and answers confidential because we really wanted them to give us an honest answer," he said.

Luckily the candidates themselves are more forthcoming, not only confirming their participation (or lack thereof) in the union interviews, but also the answers they gave on questionnaires they were asked to fill out before meeting with union representatives face-to-face.

The SEIU questions ranged from local issues — "Do you support the two-tier retirement system and why?" — to national

issues: "Do you support or oppose the general legalization of immigrants currently living in this country?"

As might be guessed by its name, the San Mateo County Labor Council focused on the local level, posing, for example, "Volunteer firefighters as first responders, in lieu of fulltime fire service personnel for a municipal fire department are unreliable. Would you support continuation of or the start up of such a service in your community?"

Both questionnaires attempt to assess what sort of support each candidate is willing to offer the unions, along the lines of picketing, allowing direct access to staff, and helping labor representatives develop legislative proposals.

By presstime The Almanac had received copies of completed union questionnaires from four candidates — Mayor Rich Cline, Councilman Heyward Robinson, educator Chuck Bernstein, and wildcard entrant Russell Peterson. Information about the responses will be published in a future issue. ■



alys grace
MENLO PARK

home sweet home

OUR EXTRAORDINARY STAFF IS GLAD TO BE HOME

GRAND RE-OPENING

september 15, 2010



FACEBOOK.COM/ALYSGRACEMP

ALYSGRACE.COM

CHAMPAGNE, CUPCAKES, FANTASTIC GOODIE BAGS & NEW FALL FASHION

10AM-6PM 899B SANTA CRUZ AVENUE (NEXT TO PEETS) 650.322.5524



EYE INSTITUTE AT STANFORD



The **Eye Institute at Stanford** provides integrated vision care services in one state-of-the-art, patient-centered facility. Built on the research, teaching and clinical strengths of the Stanford Department of Ophthalmology, the Eye Institute is a unique regional resource that will also treat the most complex cases of patients referred here from around the world. The Eye Institute supports the following programs with specialized technology and advanced information systems:

- Ambulatory Surgery Center (*Coming soon*)
- Cataract Evaluation & Surgery
- Comprehensive Ophthalmology
- Conference and Teaching Center
- Cornea and External Eye Disease
- Diagnostic Imaging Center
- Glaucoma
- Neuro-Ophthalmology
- Ocular Oncology
- Oculoplastic Surgery
- Refractive Eye Laser Center
- Urgent Care
- Vitreo Retinal Center

OPENING
MID-SEPTEMBER
2010

Eye Specialty Services
650.723.6995

Refractive Eye Laser Center
650.498.7020

Vitreo Retinal Center
650.723.6995



Eye Institute at Stanford

Eye Institute at Stanford • 2452 Watson Court, Palo Alto, CA 94303

Temporary lights for M-A sports OK'd

By Dave Boyce
Almanac Staff Writer

Let there be light, said the governing board of the Sequoia Union High School District, and, within certain limits, there will now be lights for a maximum of four night football games per season at Menlo-Atherton High School, where darkness has prevailed for some 59 years.

In a unanimous vote, the five-member board agreed on Sept. 1 to proceed with the installation of temporary light towers at M-A's Coach Parks Field and agreed to a plan that would also allow up to six evening soccer games and six evening lacrosse games per season.

The lights must be out by 10:30 p.m. for the football games, and only the football games can use a public address system. The soccer and lacrosse games can have lights until 8:30 p.m. and cannot play on weekends, with these same restrictions applying to other activities such as evening practices.

The change is in line with the school's new schedule that has

students starting the day about an hour later. Research shows that teens need more sleep and the district has encouraged schools to change their schedules accordingly.

M-A athletes have also had to sacrifice class time to play afternoon games. Should the lights not go in, "it might be hard to put as many girls on the field," M-A girls soccer coach Paul Snow told the board before its vote.

Eight people from the audience spoke, including M-A parents, athletic coaches and teachers, all in support of the lights.

While no one spoke in opposition, a group of Atherton residents have sued the district, alleging failure to comply with state regulations on environmental impacts and local regulations on athletic-field lighting, heights of structures and noise limits.

The state permits school districts to exempt themselves from local zoning ordinances for projects such as this one. The board voted on such a resolution and it passed unanimously.

The temporary lights are a placeholder while the Sequoia

district studies the impact of permanent lights with respect to Atherton neighbors' concerns, including parking, safety, artificial light and noise.

The board seemed agreeable to a suggestion by board member Lorraine Rumley that the district open a line of communication with neighbors and providing a point person for complaints.

The school needs to be a good neighbor, M-A boys lacrosse coach Steven Kryger said, but "we want to give the community a chance to come together and support our student athletes as a whole."

An experimental night game in November drew a large and enthusiastic crowd and much higher gate and snack-bar receipts.

The process leading up to temporary lights, said board member Chris Thomsen, has been "a thoughtful community effort to try to work with the neighbors."

"I think it's pretty clear," added board member Alan Sarver, "that the firm voice of opposition is encapsulated within the lawsuit." ■

A FESTIVAL LIKE NO OTHER

CHAMBER OF COMMERCE
MOUNTAIN VIEW
Art & Wine
FESTIVAL | SEPT. 11-12, 2010
39TH ANNUAL
A CULTURAL COMMUNITY CELEBRATION

FREE ADMISSION

September 11-12, 10am to 6pm
Castro Street, Downtown Mountain View

SILICON VALLEY'S WORLD-CLASS ART & MUSIC FESTIVAL

600 EXCEPTIONAL ARTISTS
STELLAR LIVE MUSIC EVERYWHERE

ORGANIC & GREEN PRODUCTS • FABULOUS FOOD & DRINK
HEALTH & WELLNESS DISPLAYS • HOME & GARDEN EXHIBITS
REFRESHING WINES • MICROBREWS
MARGARITAS • MOJITOS • SANGRIA

CALTRAIN & LIGHT RAIL DROP YOU OFF RIGHT AT THE FESTIVAL
SECURE BICYCLE PARKING AT CASTRO AND CHURCH STREETS
SPECIAL REMEMBRANCE CEREMONY
TO HONOR THE HEROES FROM 9/11

Comcast PIGSKIN PARTY LOUNGE
WITH GIANT LED SCREEN Watch NFL Week 1 Live!

SMASHING ENTERTAINMENT
ON THE **SolarCity** STAGE & STREET

The Groove Kings • Department of Rock • Bump City • Mustache Harbor
Zoo Station • Off The Record • Bob Culbertson • Emerson • Shabang
Kaweh • Aryeh Frankfurter • Ancient Winds • HeartStrings Music

TISHMAN SPEYER PROPERTIES KIDS' PARK
Microsoft School of Rock Stage, Presented by Best Buy
Super Cool Body Art • Monster Slide • Climbing Wall • Amusement Rides
Thrilling Motion Theater • Hands-On Art Win an XBOX 360!

PROUDLY PRESENTED BY

EL CAMINO HOSPITAL
Recology
SANTA CLARA VALLEY WATER DISTRICT
SolarCity
The Mercury News
METROMINT
WAVE
KRAY
Alice 97.3
OF CW
LEADERSHIP
www.chambermv.org

Google
Palo Alto Medical Foundation
Conceptus Inc.
Comcast
Kaiser Permanente
thrive
MOUNTAIN VIEW VOICE
LONGBOARD
TISHMAN SPEYER
95.9 KKITV
WORLD CENTRAL

INFO LINE: 650-968-8378 | WWW.MIRAMAREVENTS.COM | NO PETS PLEASE

Find us on Facebook
Tweet: #MVAW10

KinderBears: A Great Place to...
Laugh - Learn - Play and Share


KinderBears
A Young Fives Program

Join Us!
Session I: 9:00 am - 12:00 pm
Session II: 1:00 pm - 4:00 pm

Call Today! 650-867-8597

Check out our website:
www.mykinderbears.com

Our Location: Hampton Oaks • 204 Bradbury Lane • Redwood City, CA
(off of Woodside Rd. near Atherton, between Alameda de las Pulgas and El Camino.)

Open House Aug. 28-Sept. 3 from 9:30-11:30am.

BIRTHS

Menlo Park

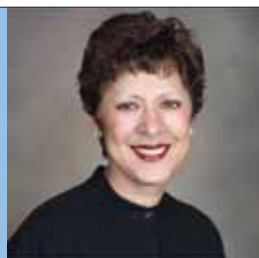
■ Sara Fernandez Lopez and Jose Angel Martinez Rodriguez, a daughter, Aug. 23, Sequoia Hospital.

www.TheAlmanacOnline.com
your online source for local news about
MENLO PARK,
ATHERTON,
PORTOLA VALLEY,
WOODSIDE


Atherton Allergists
ALLERGY • ASTHMA • IMMUNOLOGY
Manjul S. Dixit, MD

Manjul S. Dixit, MD, FAAAAI is moving her practice from Menlo Medical Clinic to Atherton Square.
Convenient hours 12 pm-8 pm and ample parking.
Services Include:
• Allergic Rhinitis • Asthma • Food Allergy • Cough • Congestion
• Latex • Headaches • and much more....
Please visit our website @ www.athertonallergists.com
3301 El Camino Real, Suite 101 • Atherton, CA 94027
(650) 556-9577 • (650) 556-0655 fax
www.athertonallergists.com

GRAND OPENING 09/07/2010!



Cardoza-Bungey Travel

We Make Vacations Better!

Tahiti & South Pacific Cruises this Fall

Paul Gauvain
CRUISES

TO THE SOUL OF THE SOUTH SEAS

45% off & free air on select sailings

650-325-5600

CST#1007564-10

www.cardoza.com

Atherton scrambling to fix records-access problems

By Renee Batti

Almanac News Editor

On the heels of an Aug. 20 showdown in Town Hall over access to public records, Atherton officials are scrambling to fix the problem they've identified as the root of the town's difficulties in producing building department records of housing permits, inspections and other documents.

The problem, City Manager Jerry Gruber said, is that not all data was migrated from old software to the software installed in 2007. "Unfortunately, we made the assumption the migration was complete" when the town switched to the new record-keeping software, he told The Almanac.

"We're doing everything we can at the staff level to resolve this," he said, adding that he will also approach the City Council for funding approval to hire an expert to complete the data migration so that "we'll be able to pull reports really easily."

At the same time, Mr. Gruber is taking a conciliatory approach with the two people who confronted him on Aug. 20, demanding to see public records they had requested via state Public Records Act letters. The records were not made available that day to resident Kimberly Sweidy and former town employee John Johns.

Mr. Johns, who successfully sued the town over wrongful termination, threatened to take legal action to force the town to produce the records if it didn't do so by Aug. 27.

Mr. Johns said on Sept. 3 that he had not taken the legal step after receiving assurances from the town that real efforts were being made to retrieve the records he was seeking. In an Aug. 26 e-mail to Mr. Johns, Mr. Gruber wrote: "I would like to express my regret for the frustration you are experiencing. ... (T)he town is committed to working with you to provide any disclosable public records you request."

On Sept. 1, Deputy City Clerk Theresa DellaSanta sent Mr. Johns a sample page of data the staff had retrieved through an involved process, and said she would prepare a disk with all the material — numbering more than 25,000 pages — once he confirms the data is what he requested.

"The town does appear to be making the necessary efforts" to retrieve the records, Mr. Johns told The Almanac.

Town staff also worked with Ms. Sweidy to arrange a meeting between her and the town's part-time interim building official to discuss the records she is seeking on the permit approvals, inspections and other building department involvement with the construction of her home. Ms. Sweidy has accused the department of "gross negligence" in the performance of its duties.

The town switched from Q&A software to Trakit software after questions were raised about record-keeping and other discrepancies in the building department in an audit performed by Mr. Johns, who was the town's finance director at the time. ■



MISSION  HOSPICE
& HOME CARE
it's about life

- Lowest patient-to-nurse ratio in the Bay Area
- Personalized plan of care to meet the unique needs of every patient and family
- Providing medical, emotional, social and spiritual support

Serving the Peninsula since 1979. Contact us at (650)554-1000 or www.missionhospice.org

 **express**

Get local news updates in your e-mail inbox daily

Sign up today at — TheAlmanacOnline.com



*The longer
you weight...*

Bariatric Surgeons

Prithvi Legha, M.D.
Mountain View
(650) 404-8400

John Feng, M.D., FACS
Palo Alto
(650) 853-2985

Redwood City
(650) 853-6600



*Palo Alto Medical
Foundation*

A Sutter Health Affiliate

THE CURE FOR COMMON MEDICINE

Living with obesity doesn't just affect your emotional health; it can lead to other serious health problems that can take years off your life. If you've struggled with diet and exercise and still have not achieved lasting weight loss, it may be time to consider weight loss surgery.

The Palo Alto Medical Foundation's comprehensive Weight Loss Surgery Program is comprised of a team of the area's finest bariatric surgeons, dieticians and behavioral health professionals. Our surgeons are highly trained in the latest minimally-invasive weight loss surgery procedures, including gastric bypass, stomach band placement and vertical sleeve gastrectomy. In addition, we provide nutritional and psychological support and long-term follow up care to help you achieve and maintain a healthy weight.

Don't wait any longer to start living the healthier, happier, longer life you deserve. To learn more, visit pamf.org/wls, or call one of the physicians listed to the left to schedule a consultation.

Call the location nearest you to RSVP for one of our FREE upcoming introduction and orientation seminars. Seating is limited.

pamf.org/wls



Annual Labor Day Sale

30% SAVINGS

Starts Friday, September 3rd at 7:00 am
through Sunday, September 12th

Family Owned & Operated Since 1960

Plant Material 1-gallon and larger • Pottery
Statuary, Fountains and Garden Ornaments • Houseplants
Planters, Trellises, Hanging Baskets • Giftware
Roses and Fruit Trees • Bonsai & Cactus

DELIVERY AVAILABLE - CALL FOR DETAILS
Sorry, the sale is limited to stock on hand and does not apply to bedding plants, bulbs, fertilizer, soils, chemicals, or garden supplies. (Also does not apply to special orders).

Open 7 Days a Week
650.368.5908
492 Woodside Road, Redwood City
1/4 Mile West of El Camino
Open Mon-Sat 8-6 • Sunday 8-5
www.WegmansNursery.com



Caltrain weighs fare hikes; worries about service cuts

■ BRIEFS

Although weekend Caltrain service recently escaped the budget ax, at a public hearing on Sept. 2 the rail agency proposed a mix of fare increases and other service cuts.

Caltrain said options under consideration include raising fares by 25 cents, and stopping early morning weekday service. Caltrain is considering cutting service from 4 a.m. to 6:30 a.m. on selected lines.

According to the rail agency, it's facing an almost \$30 million budget deficit by next fiscal year, which starts July 1, 2011.

"These will be the good old days compared to what we will face in July," Executive Director Michael Scanlon said in a press release.

"We are talking about no special service, no weekend service, no late night service, no midday service and no service to Gilroy," he said. "We are only putting off for a matter of months the day of reckoning."

About 1,500 people submitted comments about cost-saving measures, with most in favor of increasing fares instead of service cuts, Caltrain said in a

press release.

Chamber hosts mixer, candidates forum

September is off to a busy start for the Menlo Park Chamber of Commerce. First up: a mixer at Left Bank Restaurant on Wednesday, Sept. 15, running from 5:30 p.m. to 7:30 p.m.

Next, the Chamber will host a City Council candidates forum on Wednesday, Sept. 29, in the council chambers at City Hall. The forum starts at 7 p.m. Each candidate may make introductory and closing statements, and field moderated questions from the audience.

Rail meetings open to public

Menlo Park Mayor Rich Cline announced that the city's high-speed rail subcommittee has decided to open its monthly meeting to the public, starting Aug. 30. Mr. Cline serves on the

See **BRIEFS**, page 17

Stanford Continuing Studies

FALL 2010



Liberal Arts & Sciences • Creative Writing • Professional & Personal Development

Featured Fall Courses:

Stanford Saturday University

Jane Austen on Film

Great Plays through Performance

Alexander the Great: The Homeric King

Jazz in Paris: A Cultural History from 1917 to the Present

When Science and Religion Meet

Aristotle: The Foundation

How to Think Like a Designer

Stanford Continuing Studies offers a broad range of courses in liberal arts & sciences, creative writing, and professional & personal development. Designed to cultivate learning and enrich the lives of adults in the Bay Area, most courses are taught by Stanford instructors and are open to all.

Fall Registration Now Open. Register Today!
continuingstudies.stanford.edu



NOTICE OF A PUBLIC HEARING ON REVISIONS TO THE TOWN'S GEOLOGIC AND GROUND MOVEMENT POTENTIAL MAPS AND RELATED ZONING PROVISIONS AND LAND USE POLICIES AND NOTICE OF PUBLIC REVIEW PERIOD OF PROPOSED NEGATIVE DECLARATION FOR ADOPTION OF THESE MATTERS

NOTICE IS HEREBY GIVEN that the Town Council of the Town of Portola Valley will hold a public hearing on the proposed revisions to the Geologic and Ground Movement Potential Maps, Related Zoning Provisions and Land Use Policies on Wednesday, September 22, 2010 at 7:30 p.m., in the Town Council Chambers (Historic Schoolhouse), 765 Portola Road, Portola Valley, California. The Town Council will consider all evidence, written and oral communications pertaining to the proposed Element. All interested persons are invited to appear before the Town Council to be heard at the time and place herein above mentioned.

Public Hearings provide the general public and interested parties an opportunity to provide testimony on these items. If you challenge a proposed action(s) in court, you may be limited to raising only those issues you or someone else raised at a Public Hearing(s) described above, or in written correspondence delivered to the Planning Commission at, or prior to, the Public Hearing(s).

NOTICE IS HEREBY GIVEN that a proposed Negative Declaration regarding the above mentioned Revisions has been prepared and is available for review. The Town Council will consider the proposed Negative Declaration at its meeting of September 22, 2010 at 7:30 p.m., in the Town Council Chambers (Historic Schoolhouse), 765 Portola Road, Portola Valley, California. Comments may be submitted in writing prior to the Town Council meeting or presented at the meeting. All interested persons are invited to appear before the Town Council at the time and place herein above-mentioned. Copies of the proposed Negative Declaration are available at Portola Valley Town Hall, 765 Portola Road, Portola Valley, California.

Dated: September 2, 2010

Leslie A. Lambert
Planning Manager

Westridge burglary suspects plead no contest in plea deal

Two South San Francisco men pleaded no contest to burglary charges Thursday, Sept. 2, in connection with a March 2010 incident in the Westridge neighborhood of Portola Valley.

In a plea agreement in San Mateo County Superior Court, Nathaniel James Rohman, 33, pleaded no contest to burglary, possession of drugs, and grand theft, all felonies, in exchange for a sentence that includes two years in state prison and \$400 in fines, Assistant District Attorney Karen Guidotti said in a report.

Gary Wayne Ledbetter, 42, pleaded no contest to one count of burglary in a deal that would put him in prison for no more than 16 months, Ms. Guidotti said. He will be sentenced in October.

The incident unfolded in the

200 block of Golden Hills Drive when sheriff's deputies noticed and interviewed Mr. Ledbetter, who was sitting in a pickup truck that matched a description from an earlier incident.

After admitting that he was a parolee and thus subject to random search and seizure, deputies searched Mr. Ledbetter's truck and found a bolt-cutter, wire cutters and a reciprocating saw, "all tools for entering and possibly removing things," a deputy told The Almanac at the time.

Mr. Ledbetter then received a call on his cell phone from Mr. Rohman asking to be picked up on nearby Fawn Lane. Deputies placed Mr. Ledbetter in a squad car and used his truck to rendezvous with Mr. Rohman, who ran briefly but gave up after seeing a patrol car approaching, deputies said.

Siblings arrested in hotel robbery

By Sue Dremann

Palo Alto Weekly

A brazen late-night attack on a Palo Alto hotel worker in his room has ended with the arrest of two Menlo Park siblings.

Eric Dang Stuart, 50, and Mary Patricia Stuart, 52, allegedly forced their way into a room at Hotel California, located at Ash Street and California Avenue, at 11:42 p.m. Sunday, Aug. 29.

The brother and sister were known to the 45-year-old hotel employee and had an ongoing dispute regarding financial matters, according to Palo Alto police spokesman Max Nielepko.

The victim had the door secured with a safety chain when the Stuarts forced their way in, Mr. Nielepko reported. The man was assaulted and pushed down during the robbery but received only minor injuries.

His keys and cell phone were taken, Mr. Nielepko said. The employee immediately called police and provided a location where the Stuarts might be found.

Police waited outside the Stuarts' residence on Santa Cruz Avenue in Menlo Park and detained the pair as they drove up. They were identified in a lineup and booked on a variety of charges.

Eric Stuart was booked on four charges: felony robbery, felony conspiracy, misdemeanor assault and battery, and a felony parole violation for a previous conviction for assault with a deadly weapon. He remains in custody in Santa Clara County jail.

Mary Stuart was booked on three charges: felony robbery, felony conspiracy and misdemeanor assault and battery. She was released from jail, Mr. Nielepko said.

express

Get daily local news updates

FREE

in your e-mail inbox.

Sign up today at

TheAlmanacOnline.com

CLEARVIEW

- Window cleaning
- 20 years experience
- Pressure washing
- Reliable and insured

CALL SHAWN • 650-526-8156
for a free estimate

www.clearviewwindowcleaningservice.com



MARTINTHOMAS

WEALTH MANAGEMENT

Your Family's Financial Security



Kent Martin Thomas Michael

Comprehensive Wealth Management Solutions

2221 El Camino Real, Palo Alto, CA 94306

www.martinthomaswm.com • 650.617.8808 • info@martinthomaswm.com

Complimentary Consultation

Martin Thomas Wealth Management is an investment adviser registered with the U.S. Securities and Exchange Commission

**FREE KITCHEN COUNTERTOP
WITH ANY CABINETRY PURCHASE!**

**See store for details.*



IF YOUR KITCHEN NEEDS AN UPGRADE, NOW'S THE PERFECT TIME TO REMODEL.

The Cabinet Center is a full-service design showroom, offering you step-by-step guidance from concept to completion. Call or visit us today for your free design consultation.

THE CABINET CENTER

CUSTOM DESIGNED FOR THE WAY YOU LIVE

633 LAUREL STREET, SAN CARLOS 650.654.8832 MON. - SAT. 10-5

WWW.THECABINETCENTER.COM



Matched Care Givers

"There's no place like home."

Redwood City - San Mateo - San Jose

**When you,
or someone you care about,
needs assistance...**

**you can count on us
to be there.**

Call now (650) 839-2273

BOWMAN

INTERNATIONAL SCHOOL



The Bowman program builds confidence, creativity and academic excellence.



◆ Lower School - Grades K - 5



◆ Middle School - Grades 6 - 8



◆ Individualized, self-directed program

◆ Rich international and cultural studies

◆ Proven, Montessori approach

◆ State-of-the-art facility

◆ Low student-teacher ratio

www.bowmanschool.org

4000 Terman Drive • Palo Alto, CA • Tel: 650-813-9131

Cancer caregiving conference at Stanford

A daylong conference on the issues surrounding caring for someone with cancer is set for Saturday, Sept. 11, at Stanford University, and includes a keynote speech by New York Times health and wellness columnist Jane Brody.

Seminar topics include daily care, family dynamics, self help, hospice, insurance issues, pain management and caring for the caregiver who cares for the patient, according to a statement from Stanford. Registration begins at 8 a.m., followed by a welcome and introduction at 9 a.m.

Ms. Brody is the author of "Guide to the Great Beyond," designed to help families prepare medically, legally and emotionally for the end of life, regardless of health status, the statement said. She speaks widely on health and wellness and is known for practicing what she preaches in terms of exercise and diet.

"Caregiving is both an important responsibility and a gift," said Portola Valley resident Pam Naeve, the director of community education at the Cancer Prevention Institute of California. "Family

and friends often serve as caregivers and don't have time or take time to care for themselves while caring for loved ones."

The most effective caregivers are those who take good care of themselves as well, she added.

The \$20 registration fee includes a continental breakfast and lunch. The event is being put on by Cancer Prevention Institute and co-sponsored by the cancer center, health library and hospital at Stanford.

Go to cpic.org or call 888-315-5988 for more information.

Menlo Park teen uses 'Sweet Sixteen' birthday to raise money for microloans

By Hannah Totte

Special to the Almanac

MTV's show "My Super Sweet Sixteen" broadcasts teenagers jetting to Europe to shop for their special day and unveiling new Corvettes for their birthdays. The 16th birthday has become a cultural milestone as a teen's "chance to shine" in an overpriced spotlight.

But for Keara Halderman of

Menlo Park, her 16th birthday represents a chance to support her favorite cause, the Kiva Foundation, which provide microloans to help people start businesses in impoverished countries.

On Aug. 21, Keara invited friends to a party, but asked them to make donations between \$5 and \$20 to the Kiva club that she set up at Menlo-Atherton High School.

"I needed a way to fundraise

and spread the word," says Keara. "I thought this party would be a good way to jump start the club."

Since she was 8, Keara has been setting aside portions of her allowance for Kiva, and has since funded 11 entrepreneurs in places such as Togo, Guatemala and Kenya.

The first person Keara assisted made a sugar-based drink, and has since been able to hire people. "When I saw her picture, it just spoke to me," says Keara.

At the party, Keara's friends were exposed to the benefits of helping out a stranger, and Keara enjoyed the thrill of being 16 in a less superficial light as well.

"I'm not asking for a Hummer or a Corvette," she says. "I want to do something for the community and for the world."

Go to is.gd/eqrs7 (case sensitive) for information on the Kiva Lending Team at Menlo-Atherton High School. ■

OPERA SAN JOSE

PRESENTS THE
WEST COAST PREMIERE
OF DAVID CARLSON'S NEW OPERA

ANNA KARENINA

BASED ON THE NOVEL
BY LEO TOLSTOY

SEPT 11-26, 2010
CALIFORNIA THEATRE

BUY YOUR TICKETS NOW!
408.437.4450
OPERASJ.ORG



CHRIS AYERS PHOTO

The Great Frame Up

WHERE PICTURE FRAMING IS AN ART.®

Invites you to their



Opening Gala

Sun. Sept. 12th 2pm to 5pm

show continues thru end of October

with **50% OFF** the frame,
on any custom framing order placed during the show

1047 El Camino Real, Menlo Park
(next door to Su Hong's)
650-3231097

Hours: Mon.-Sat: 10-6

Click on
Your Community,
anytime,
from anywhere.



www.TheAlmanacOnline.com

Your online source for
local news about Menlo Park,
Atherton, Portola Valley
and Woodside.

The Almanac

POLICE CALLS

This information is from the Atherton and Menlo Park police departments and the San Mateo County Sheriff's Office. Under the law, people charged with offenses are considered innocent until convicted.

ATHERTON

Residential burglary report: Open door and possible pry marks found so police searched house with K9 team, Hawthorn Drive, Sept. 1.

Fraud report: Use of phony driver's license to withdraw \$3,500 from victim's bank account, Brittany Meadows Ave., Aug. 28.

Grant theft report: Unlocked bike valued at \$2,000 stolen from secure backyard, Arthur Lane, Aug. 29.

MENLO PARK

Residential burglary report: Storage unit lock possibly picked and two suitcases valued at \$200 stolen, 1300 block of Hoover St., Aug. 28.

Grand theft reports:

■ Unlocked bicycle stolen, 800 block of Santa Cruz Ave., Aug. 29.

■ Wallet stolen after being left overnight in park, Seminary Drive and Santa Monica Ave., Aug. 28.

■ Handgun stolen, main police station at 701 Laurel St., Aug. 30.

Fraud reports:

■ Unauthorized use of credit card, 1000 block of Laurel St., Aug. 31.

■ Unauthorized use of credit card, first block of University Drive, Sept. 1.

WOODSIDE

Fraud reports:

■ Unauthorized use of Social Security number, 100 block of Kenmore Way, Aug. 26.

■ Charges totaling \$405 from unauthorized use of debit card, 400 block of Old La Honda Road, Aug. 31.

PORTOLA VALLEY

Theft report: Footprints on dewy wooden bridge suspected in connection with missing saw horse, 400 block of Minocca Road, Aug. 29.

LADERA

Auto burglary reports:

■ Windows smashed on two vehicles and GPS stolen from one, Lawler Ranch and Sand Hill roads, Aug. 25.

Dispatch contract survives San Carlos police outsourcing

By Sandy Brundage

Almanac Staff Writer

When the San Carlos voted Sept. 2 to dissolve its police force in favor of contracting with the Sheriff's Office, questions arose regarding the fate of Menlo Park's contract to provide emergency dispatch services to San Carlos.

Turns out the contract remains viable. According to Glen Rojas, Menlo Park's city manager, San

Carlos has agreed to let the \$698,500 contract run its full term until November 2011.

"All of our dispatch personnel are extremely dedicated and professional and have been displaying that work ethic throughout the process," Mr. Rojas said. "San Carlos has been very cooperative and respectful of the impacts to the dispatchers that are impacted by their actions to go with the County Sheriff."

Even though Menlo Park could

fulfill the contract, the city manager said staff will consider other options during the next week. One alternative is to allow San Mateo County to absorb the dispatch duties.

"We are working with our dispatchers to determine the pros and cons of each alternative from the organization perspective as well as the employees. Our goal is to be fair to our employees while protecting the interests of the City," said Mr. Rojas said in an e-mail.

BRIEFS

continued from page 14

subcommittee with Councilwoman Kelly Fergusson.

Held on the last Monday of each month, the meeting runs from 5:30 to 6:30 p.m. in the City Council Conference Room on the first floor of City Hall.

Two named to commission

Without discussion, the City Council appointed Jean Baronas and Kathy Schrenk to the Environmental Quality Commission, which advises the council on matters pertaining to heritage trees, recycling, pollution, and other environmental concerns.

Councilman Andy Cohen nominated Ms. Schrenk, while Councilwoman Kelly Fergusson suggested Jean Baronas. Councilman John Boyle's nominee, Roger Thompson, was left without a spot since there were only two vacancies. The new commissioners will serve until April 2014.

Council takes holiday

It's a four-day weekend for the Menlo Park city council. The Sept. 7 meeting has been cancelled. They will next meet on Tuesday, Sept. 14, at 7 p.m. in City Hall.

HELLER IMMIGRATION LAW GROUP
Employment-based, Family/Marriage & Investor Visas
 A Full-Service Immigration Law Firm
 Serving the SF Bay Area & Silicon Valley for 25+ years
PERM Labor Certification • EB1/NIW Self-Petitions
Green Cards, H1B and Work Permits
 Engineers, IT/Computer fields, Scientists/Researchers
 HR/Corporate, Business & Individual Clients
Free Attorney Consult!
 650.424.1900 • greencard1.com • heller@greencard1.com

Heartfelt professional care for the elderly



just like family

- Private or shared rooms
- 24-hour on-call assistance
- Temporary and respite stays
- Personal care
- All meals, snacks, special diets
- Many special activities and events

Hopkins Manor
 1235 Hopkins Ave, Redwood City, CA 94062
 Lic # 410508680
650.368.5656
 www.justlikefamily.com • Family owned and operated

Join Now & Save \$100*
 Losing Weight has never been so easy!
Lose 15-20 Lbs. in 8 Weeks



Seale Harris M.D.
LITE FOR LIFE
 WEIGHT LOSS


- Improve Your Health • Increase Your Energy
- Look & Feel Better • FREE Consultation

Menlo Park
 713 Oak Grove
 (650) 323-5483
 (across from the Fire Station)

*12 week minimum. Limited time offer. Call for details

www.liteforlife.com

THE CARDINAL RULES!



ANDREW LUCK **OWEN MARECIC**

STANFORD FOOTBALL

WHAT'S YOUR DEAL 3-GAME MINI PLANS START AT \$85!

(includes the USC game and your choice of two other home games)

Next Home Game
STANFORD VS. WAKE FOREST
 September 18 – 8:15 PM



GET TICKETS BY CALLING 1-800-STANFORD
 OR VISIT GOSTANFORD.COM

Editor & Publisher

Tom Gibboney

Editorial

Managing Editor Richard Hine

News Editor Renee Batti

Lifestyles Editor Jane Knoerle

Senior Correspondents

Marion Softky, Marjorie Mader

Staff Writers

David Boyce, Sandy Brundage

Contributors Barbara Wood,

Kate Daly, Katie Blankenberg

Special Sections Editors

Carol Blitzer, Sue Dremann

Photographer Michelle Le

Design & Production

Design Director Raul Perez

Designers Linda Atilano,

Gary Vennarucci

Advertising

Vice President Sales & Marketing

Walter Kupiec

Display Advertising Sales

Heather Hanye

Real Estate Manager Neal Fine

Real Estate and Advertising

Coordinator Diane Martin

Published every Wednesday at
3525 Alameda De Las Pulgas,
Menlo Park, Ca 94025

Newsroom: (650) 854-2690

Newsroom Fax: (650) 854-0677

Advertising: (650) 854-2626

Advertising Fax: (650) 854-3650

e-mail news and photos with
captions to:

Editor@AlmanacNews.com

e-mail letters to:

letters@AlmanacNews.com

The Almanac, established in September, 1965, is delivered each week to residents of Menlo Park, Atherton, Portola Valley and Woodside and adjacent unincorporated areas of southern San Mateo County. The Almanac is qualified by decree of the Superior Court of San Mateo County to publish public notices of a governmental and legal nature, as stated in Decree No. 147530, issued November 9, 1969.

Subscriptions are \$60 for one year and \$100 for two years.



WHAT'S YOUR VIEW?

All views must include a home address and contact phone number. Published letters will also appear on the web site, www.TheAlmanacOnline.com, and occasionally on the Town Square forum.

TOWN SQUARE FORUM

POST your views on the Town Square forum at www.TheAlmanacOnline.com

EMAIL your views to:

letters@almanacnews.com and note this it is a letter to the editor in the subject line.

MAIL or deliver to:

Editor at the Almanac, 3525 Alameda de las Pulgas, Menlo Park, CA 94025.

CALL the Viewpoint desk at 854-2690, ext. 222.

Menlo parking gets a makeover

The Menlo Park City Council's decision last week to make a major change in downtown parking regulations is a step forward, but if the city really wants to provide plenty of free parking for downtown shoppers and restaurant patrons, there is a simpler way to do it.

Either make a major reduction in the number of parking permits issued in downtown plazas, or build a parking garage to house the hundreds of retail employees and office workers who are now taking away valuable parking spaces from customers.

It is no surprise to city officials and parking experts that the city's parking

plazas are more than adequate to serve shoppers and restaurant patrons, if up to half the spaces in the plazas were not taken by permit parkers. For example, plazas two

and three are at nearly 100 percent capacity from noon until 3-4 p.m. on most weekdays. And it is no surprise that these plazas also have the highest percentage of permit parkers.

The parking plan adopted by the City Council last week goes part way by moving 50 percent of the permits from the popular plaza two off Oak Grove Avenue to other, lesser-used plazas, which will leave more spaces for shoppers. This is a good step, but more needs to be done if retail customers are the highest priority downtown.

There are some other big changes in the new plan: Parking on Santa Cruz Avenue will be reduced to one hour from two, and 15-minute spaces will be added at the corners for quick in-and-out shopping. The parking consultants believe this will provide more options for shoppers to quickly make a purchase at Santa Cruz merchants or run in and out of a drycleaner, for example, when they use the 15-minute spots.

And, for the first time, anyone who wants to park longer in Plaza One will be able to pay for the third and subsequent hours at a slowly escalating rate. This option is designed to help shoppers who need more than

two hours to enjoy extended appointments without worrying about parking tickets.

Another way the plan will help stop employees from shuffling their cars among the two-hour lots is to open up 26 all-day street-parking spaces on the downtown periphery in hopes that a short walk will be much more appealing than moving a car every two hours. And in another effort to give shoppers more time, the many one-hour street parking slots on Oak Grove and Menlo Avenue will jump from one to two-hours in January.

These changes came after a \$55,000 study commissioned by the city to design a better parking plan. A survey taken by the consultants found what most downtown business owners already know — permit-parkers and employees who move their cars among the two-hour spaces generate the most concerns from local merchants and property owners. Similar studies have shown that overall, downtown parking capacity is more than adequate. But permit and employee parkers change the dynamic by taking away valuable spaces that can freeze shoppers out of parking near their destination.

That is why downtown merchants and property owners need to give serious consideration to the often suggested but never adopted plan to build one or two parking garages downtown. As parking studies clearly show, all-day permit and employee parkers are a problem that could be solved by shifting them to a site away from the most valuable parking plaza spaces. Depending on other improvements adopted for downtown, the new garages could virtually eliminate the downtown parking crunch at all hours of the day and provide longer-term parking.

There are plenty of other reasons to debate whether Menlo Park is ready to accommodate a parking garage — such as aesthetics and cost — but there should be no question that such structures will make it much easier for downtown shoppers and restaurant patrons to find a place to park near their destination.

EDITORIAL
The opinion of The Almanac

LETTERS
Our readers write

Scout's advice: be prepared for a quake

Editor:

As a Boy Scout, I have just completed my emergency preparedness merit badge.

I am writing to remind people that they need to be prepared in case of an emergency. The most important thing to have is an earthquake kit. A complete earthquake kit is expensive, but it can be constructed in stages.

The most important components are food and water. You should have enough for each person in your family for three days. You should also have one gallon of water per person per day for three days. Don't forget about pets, too. You can buy dehydrated food at REI and the Redwood Trading Post. A stove or other heating device is nice, but not a necessity.

Other important items include a flashlight with extra batteries and a chemical toilet. The toilet can be very expensive, but you can make your own with a bucket, garbage bags, and cat litter. Also, you should have some form of shelter. If you don't already have a tent, you can buy one at



Atherton Heritage Association

Our Regional Heritage

During the 1970s, Atherton Police Officer Richard Moore taught drivers education at Sacred Heart School. If you can identify any of the students in the photo, please call the Atherton Heritage Association at 688-6540.

almost any camping store.

October is National Preparedness Month. For more information, you can attend one of the many upcoming local events highlighted in an Aug. 20 article of the Palo Alto

Weekly, or check out the Emergency Preparedness Boy Scout Merit Badge Book from the Santa Clara County Library System.

Although these kits can be costly and time consuming to build, we all

know that an ounce of prevention is worth a pound of cure.

A.J. Connell
Sharon Road, Menlo Park

See **LETTERS**, next page

LETTERS

Continued from previous page

Worry about disruption in downtown Menlo

Editor:
Why is a downtown development plan necessary in Menlo Park?

I have worked at a local business on Santa Cruz Avenue for nine years and have constantly heard from customers, visitors, and residents, how much they value the unique character of the downtown area as it is.

I believe that this is mostly due to the locally owned businesses. These businesses will be the most severely affected by any lengthy, loud, and potentially damaging impacts of the proposed construction and parking lot closures. How would we receive deliveries? Where will customers park during all the proposed construction — or would they simply avoid the area as it could be a chaotic mess?

In this economic downturn, any major disruption to a small business can put us out of business.

Why would the City Council defend a developer instead of representing the tax-paying business owners and residents of Menlo Park? Perhaps the council needs to value local "Main Street" and its survival rather than accommodating a "Wall Street" developer.

**Patty Mayall
La Honda**

Gateway project looks good to me

Editor:
After 50 years in this area I am protective of our city.

My support of Measure T, the Bohannon Gateway Project, comes from my belief that it would be a real asset for three main reasons:

The location is very attractive: the project is situated on a far corner of our city where it will hardly be seen by many of us. It dramatically improves an area that currently is unattractive as one approaches Menlo Park from the intersection of Bayfront Expressway and Marsh Road.

It provides benefits to the community: Bedwell Bayfront Park, Menlo-Atherton High School, and Menlo Park housing all benefit financially. The first-source hiring agreement with JobTrain in Belle Haven adds strength to the whole proposal. Our city needs new sources of revenue to meet expenses and this project would provide approximately \$1.4 million annually.

Traffic mitigation: this project may prove the impetus for Atherton, Menlo Park, Redwood City, and the county to work together

A commemoration for Bill Lane

By Treena Joi

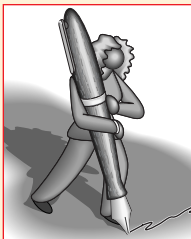
As the Portola Valley community mourns the passing of Bill Lane, I would like to share a personal account of how his supportive and charitable spirit, hallmarks of how he chose to live his life, touched my life.

I had the opportunity to meet Bill Lane when Corte Madera School was host of the Portola Valley Town Picnic during construction of the Town Center. My classroom was open for visitors, showing off our science equipment, specimen, and student work. Live animals from the Portola Valley Nature Center were delighting people just outside the door and Bill tentatively poked his head into the science room. He was barely balancing a heaping plate of

barbecue so I ushered him in to make use of our tables and chairs and eat in comfort.

Bill was very friendly and seemed genuinely excited to see what we had to offer at Corte Madera. I was pleased to show off our school and generate good will in the community. Little did I realize when I invited him in that he was such a generous benefactor to teachers in the district. When he introduced himself as Bill Lane, the name rang a bell. A year later, I was writing him a thank you card for helping me buy a home.

Every year the teachers receive a binder from the district with various clerical necessities: time sheets, schedules, field trip request forms, and purchase order requests. In the front pocket of that binder there is always a form to apply for the Bill and Jean Lane Staff



GUEST OPINION

and provide solutions to an area that has been concerned with traffic for some time.

I prefer a local developer such as David Bohannon rather than a faceless corporate entity with out-of-state financing. To my mind the advantages of Menlo Gateway outway any negatives. Please join me in voting Yes on Measure T.

**Anne Moser
Spruce Avenue, Menlo Park**

Good bet on bad deal

Editor:
You could have made a fortune if a bookie had odds on the Menlo Park City Council last Tuesday night.

You could have bet on the coun-

cil making the decision to shorten allowed parking time in parts of downtown and charging for extended parking in other areas. This when business is down and retailers are struggling.

The funniest part of this decision is that they paid a consultant to come up with this plan.

When commerce is difficult, you try to stimulate the business community, not make it more difficult. This decision comes right out of last year's "stimulus package," only my guess is that it does much more damage to Menlo Park's local business community.

**Pat White
Fremont Street, Menlo Park**

Housing Assistance Program. The program offers up to \$10,000 for rental expenses or \$20,000 toward the down payment on the purchase of a home.

"The application is simple," the form reads. "The interest rate on these loans is 0 percent ... no bank or mortgage company can beat these terms." All true, and it spoke of the generosity and welcoming I felt when I started here eight years ago.

I had the opportunity to take advantage of the program three years ago, and thanks to Bill and Jean Lane, I now have a home to call my own; a home where I have the freedom to paint my walls red and green and where I have to fix my own plumbing. It would not have been possible without the support of the Lane family.

I am very grateful for their support and Bill's legacy lives on in my humble abode and the lives of everyone he touched. My condolences to his family; he will be missed.

Treena Joi teaches sixth-grade science and electives at Corte Madera School in Portola Valley.

FREE DELIVERY
(with min. order)
"THE BEST PIZZA WEST OF NEW YORK"
—Ralph Barbieri
KNBR 680

**880 Santa Cruz Ave
Menlo Park**
(at University Drive)
(650) 329-8888

**226 Redwood Shores Pkwy
Redwood Shores**
(Next to Pacific Athletic Club)
(650) 654-3333

WOODSIDE COMMUNITY RECREATION PROGRAM
FALL SCHEDULE

CLASS	DAY	TIME	INSTRUCTOR	LOCATION	FEE	STARTING DATE
YOGA FOR EVERYONE						
13 Weeks	<i>No Classes the week of Oct. 4th</i>	Mon.	9:30 AM - 10:30 AM	Carla Germano	\$234	Sep 13
13 Weeks		Tues.	9:30 AM - 10:30 AM		\$234	Sep 14
13 Weeks		Wed.	6:00 PM - 7:00 PM		\$234	Sep 15
13 Weeks		Thurs.	9:00 AM - 10:00 AM		\$234	Sep 16
13 Weeks		Fri.	9:30 AM - 10:30 AM		\$234	Sep 17
Bring exercise mat and wear comfortable clothing						
WOODSIDE MORNING WORKOUT						
12 Weeks	<i>No Class Nov. 26th</i>	Fri.	8:00 AM - 9:00 AM	Joy Lopez	\$20 drop in	Oct 1
Easy to follow low impact aerobics & total body toning.		Mon.	8:00 AM - 9:00 AM		Independence Hall	\$360

Financial assistance available for children. Visit our Web Site at: www.woodsiderec.com

*** To Register or Fax: (650) 851-3534 ***

GULLIXSON



WWW.ARCHOAKS.COM

ATHERTON

1.6+/- ACRES WITH GARDENS ORIGINALLY DESIGNED
BY THOMAS CHURCH

SOPHISTICATED ADULT HOME

SWEEPING BAY AND WESTERN HILL VIEWS

GUEST HOUSE + STUDIO APARTMENT

OFFERED AT \$10,800,000

BRENT GULLIXSON

650.543.1194
650.888.4898 Cell
bgullixson@apr.com

DRE# 01329216

MARY GULLIXSON

650.543.1175
650.888.0860 Cell
mgullixson@apr.com

DRE# 00373961

LOIS LANDAU

Private Realty Group
415-793-2665

llandau@reachcommunications.com

DRE# 01024500

www.gullixson.com



Information deemed reliable, but not guaranteed. Square footage and/or acreage information contained herein has been received from seller, existing reports, appraisals, public records and/or other sources deemed reliable. However, neither seller nor listing agent has verified this information. If this information is important to buyer in determining whether to buy or to purchase price, buyer should conduct buyer's own investigation.

