

The Almanac

THE HOMETOWN NEWSPAPER FOR WILLOW PARK, AUSTIN, VALLEY AND WOODSIDE

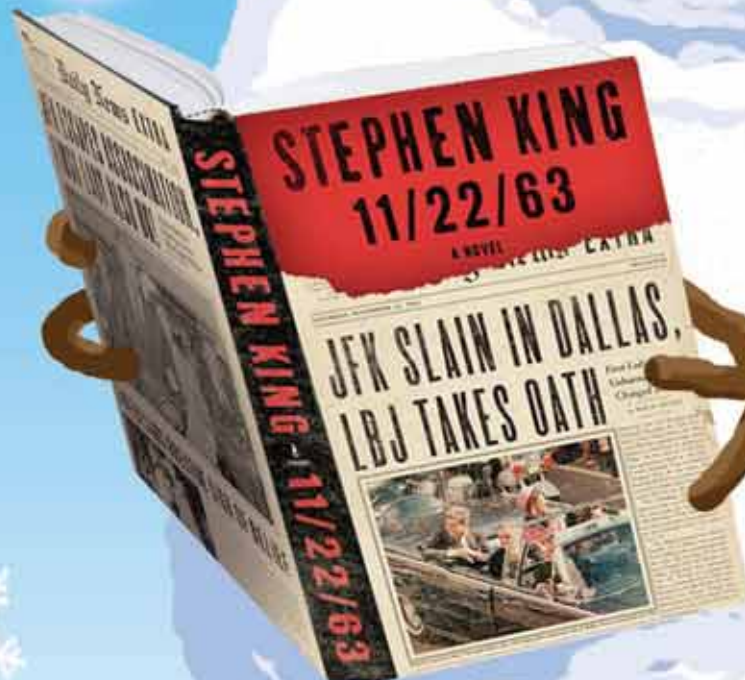
NOVEMBER 30, 2011 | VOL. 47 NO. 14

WWW.THEALMANACONLINE.COM

Local booksellers' Top picks for 2011

Great gift ideas
for the book lovers
in your family

section 2



apr.com

Go to open.apr.com for the Bay Area's only complete online open home guide.



ALAIN PINEL
REALTORS



LOS ALTOS

Lovely 2 story home in a prime Los Altos location. 4 bedrooms and 3 full baths with a family room, formal dining room, 2 fireplaces and a large yard with fruit trees. Outstanding schools, new carpeting and fresh paint inside and out.

\$1,695,000



ATHERTON

Fabulous Atherton estate, 6bd/5.5ba, office, gym, large family room. Great for entertaining with pool, hot tub, patio, and sand volleyball court. 4 car garage has one stall converted to a 2,300 bottle, temperature controlled wine cellar.

\$6,600,000



WOODSIDE

Magnificent French chateau built circa 1929 on 5 acres, restored and renovated to represent the best of Old World elegance and modern luxury. The incredibly private grounds inspire grand-scale events with a vast entertaining terrace, stretches of lawn, formal French gardens, pool, spa, and tennis court.

\$15,000,000

**LUXURY
PORTFOLIO**
INTERNATIONAL™

MENLO PARK | 1550 El Camino Real, Suite 100 650.462.1111

WOODSIDE | 2930 Woodside Road 650.529.1111



Photo by Mari Chazen

Vikings's Tate Tussing, left, catches touchdown pass thrown by Blake Stenstrom.

Pop Warner teams go to nationals

Two local Pop Warner football teams are traveling to Orlando, Florida, this week to compete in the national championships.

Both teams won the Pacific Northwest Regional Championship in their age group at Woodside High School on Saturday, Nov. 26.

The Menlo-Atherton Vikings Pee Wees (ages 11-12) defeated the Cowlitz County (Washington) Colts 20-6.

The Redwood City 49ers Junior Pee Wees (ages 10-11) defeated the Evergreen Bulldogs of Vancouver, Washington, 30-0.

Vikings

Vikings Coach Steve Stenstrom, whose total offense record at Stanford would be topped later in the day by Andrew Luck, saw his team trailing 6-0 after a first-quarter touchdown by the visitors, a hard-hitting, well-coached group from the Longview area.

The Vikings struck back in the second quarter, however, on two touchdown passes from quarterback Blake Stenstrom — 18 yards to Tate Tussing and 63 yards to Jack Devine, who also had an effective run at the quarterback position.



Photo by Judy Stone, 49ers team photographer

Two Woodside Elementary students are on the 49ers championship team: Andre Crooks, left, and Ryan Amirsehhi.

Another touchdown pass — Stenstrom to Tussing in the second half — put the game away for the locals. A placekick conversion by Lucas Andrighetto, who also had a critical first-half interception, added two points to the Vikings total.

Some two dozen Vikings players, their coaches and families will fly to Orlando on Thursday, Dec. 1, prepared for a first-round game on Saturday, Dec. 3. Another game is scheduled for Tuesday, Dec. 6.

If they're successful, the

Vikings will play for the national championship the following Friday. ESPN will televise many of the games from the network's iconic Sports Center in Orlando.

49ers

The Redwood City 49ers are in Junior Pee Wees Division II and will play their first game on Saturday, Dec. 3.

Two of the players are students at Woodside Elementary School.

Ryan Amirsehhi of Woodside, a fifth-grader, has played for the Redwood City 49er organization for two years. He plays center on the offensive line, is the team's long snapper, and play defense when needed.

Andre Crooks, a seventh-grader at Woodside Elementary, plays on the red offensive line as fullback and as a lineman on the red defensive line. He has played for the Redwood City 49er organization for five years.

The National Championship Pop Warner games will be streamed online on ESPN3.com.

Jim Gallagher of the Vikings Boosters and Michelle M. Amirsehhi, parent of a 49ers player, submitted this report.

CALLING ON THE ALMANAC

Newsroom: **223-6525**
 Newsroom fax: **223-7525**
 Advertising: **854-2626**
 Advertising fax: **854-3650**
 Classified ads: **854-0858**

■ E-mail news, information, obituaries and photos (with captions) to: editor@AlmanacNews.com
 ■ E-mail letters to the editor to: letters@AlmanacNews.com

To request free delivery, or stop delivery, of The Almanac in zip code 94025, 94027, 94028 and the Woodside portion of 94062, call **854-2626**.

THE ALMANAC (ISSN 1097-3095 and USPS 459370) is published every Wednesday by Embarcadero Media, 3525 Alameda de las Pulgas, Menlo Park, CA 94025-6558. Periodicals Postage Paid at Menlo Park, CA and at additional mailing offices. Adjudicated a newspaper of general circulation for San Mateo County, The Almanac is delivered free to homes in Menlo Park, Atherton, Portola Valley and Woodside. Subscriptions for \$60 per year or \$100 per 2 years are welcome. POSTMASTER: Send address changes to The Almanac, 3525 Alameda de las Pulgas, Menlo Park, CA 94025-6558. Copyright ©2011 by Embarcadero Media, All rights reserved. Reproduction without permission is strictly prohibited.

BOW WOW meow



HOLIDAY SALE
20% OFF *





Whether you are in need of the basic essentials, the more esoteric, a dog bath or a gift for a pet lover come to Bow Wow Meow for all your needs.

Treats & Toys • Pet Fashion
 Bowls & Beds • Beauty & Health
 Training • Travel & Totes
 People Products

Pet Specialities and Pet Grooming
654 Santa Cruz Ave., Menlo Park 650-323-2845
www.bowwowmeow.net

*Excludes food, Advantage, and Frontline - Instock items only. One time use only. Cannot be combined with other offers. Exp. 12/24

Holiday Open House

hosted by the


Woodside Fire District

Help us brighten Christmas for a less fortunate child. Bring a new, unwrapped toy for the **"Toys For Tots"** toy drive


December 14th, 7-9pm

Three locations:

Fire Station 7	3111 Woodside Rd
Fire Station 8	135 Portola Rd
Fire Station 19	4091 Jefferson Ave



Special visit from Santa!!



Palo Alto Medical Foundation Community Health Education Programs

Mountain View, 650-934-7373
Palo Alto, 650-853-2960

December 2011



For a complete list of classes and class fees, lectures and health education resources, visit: pamf.org/healtheducation.

Lectures and Workshops



**Managing Holiday Stress
For Your Health Lecture Series**
Presented by Julie Forbes, Ph.D.,
Wednesday, Dec. 14, 7 – 8 p.m.
701 E. El Camino Real, Mountain View,
650-934-7373

Learn to take time for yourself during what can be a stressful time of year. Learn techniques for catching a few minutes for yourself and how stress can affect that “holiday spirit.”



**Current Topics in Vitamins and Herbs!
For Your Health Lecture Series**
Presented by Kathy Orrico,
PAMF Clinical Pharmacy Coordinator
Tuesday, Jan. 10, 7 – 8:30 p.m.
795 El Camino Real, Palo Alto, 650-853-4873

This talk will continue our evidence based review and discussion about spices and nutritional supplements that have recently been in the news. We will present tips for selecting reliable products and keeping your healthcare providers in the loop!



**Effective and Positive Parenting
Dr. Marvin Small Memorial
Parent Workshop Series**
Presented by Susan Stone Belton,
Parent Education Specialist
Tuesday, Jan. 10, 7 – 8:30 p.m.
701 E. El Camino Real, Mountain View
650-934-7373

Topics include understanding your child, communicating with your child and effective discipline.



**Prediabetes: A Wakeup Call
San Carlos Library Lecture Series**
Presented by Judy Farnsworth, R.D., CDE,
PAMF Nutrition Services
Monday, Jan. 23, 7 – 8:30 p.m.

San Carlos Library, 610 Elm St., San Carlos, 650-591-0341

Please join us to learn about prediabetes, how it is diagnosed and important lifestyle strategies for self-management.

Cancer Care

- Eating Tips During Cancer Care Treatment
- Exercise for Energy – men and women’s group
- Expressions
- Healing Imagery
- Healthy Eating After Cancer Treatment
- Look Good, Feel Better
- Qigong
- When Eating is a Problem, During Cancer Treatment

Childbirth and Parent Education Classes

- Baby Safety Basics
- Breastfeeding
- Childbirth Preparation
- Feeding Your Young Child
- Infant and Child CPR
- Infant Care
- Infant Emergencies and CPR
- Introduction to Solids
- Mother-Baby Circle
- New Parent ABC’s – All About Baby Care
- OB Orientation
- Prenatal Yoga
- Sibling Preparation
- What to Expect with Your Newborn

Living Well Classes

- Back School
- Mind/Body Stress Management
- Mindfulness-Based Stress Reduction

Nutrition and Diabetes Classes

Mountain View, 650-934-7177 • Palo Alto, 650-853-2961

- Diabetes Management
- Healthy Eating with Type 2 Diabetes
- Heart Smart (cholesterol management)
- Living Well with Prediabetes
- Sweet Success Program (gestational diabetes)

Weight Management Programs • 1-888-398-5597

- Bariatric Weight Loss Surgery Program
- Healthy eating. Active lifestyles. (for parents of children ages 2-12)
- HMR Weight Management Program
- Lifesteps® (adult weight management)
- New Weigh of Life (adult weight management)

Support Groups

- AWAKE
- Bariatric Surgery
- Breastfeeding
- Cancer
- CARE
- Chronic Fatigue
- Diabetes
- Drug and Alcohol
- Kidney
- Multiple Sclerosis



Palo Alto Medical Foundation

A Sutter Health Affiliate

Community Based, Not For Profit

Let's connect!

facebook.com/paloaltomedicalfoundation

twitter.com/paloaltomedical

Local News

MENLO PARK | AHERTON | WOODSIDE | PORTOLA VALLEY

New art gallery opens in downtown Menlo

By Jane Knoerle
Almanac Lifestyle Editor

■ ARTSCENE

The new Erricson-Himmelberger art gallery at 855 Santa Cruz Ave. in downtown Menlo Park has reclaimed the former site of, Reclaim, an eco-friendly home furnishings store, which closed earlier this year.

"We made very few changes to the interior," says co-owner David Himmelberger. "The space had a warm feel. The walls, painted in three different colors — yellow, sage green and auburn — are a wonderful background for art."

The new gallery will display "all kinds of art: paintings, sculpture, graphic works, photography ... a full range of what people in the artistic world create," says Mr. Himmelberger.

The gallery features those who have created their own identity, he says, mentioning the late Leo Holub, former head of the department of photography at Stanford University, and

John Mancini, a Peninsula artist noted for his oil paintings.

The owners are pleased with the reception their new business has received. "The response from the community has been great," says Mr. Himmelberger, who says the partners hope to create a space and environment in the gallery that people will want to revisit.

While some galleries flaunt their famous artists, the paintings at the Erricson-Himmelberger do not carry the artists' name. "We want you to come and look and just see what you like," says Mr. Himmelberger.

The owners intend to reach out to young people on a budget. "You don't have to mortgage your house" to buy good art. It's possible to begin collecting with a few hundred dollars, they say.

Mr. Himmelberger and his business partner, Louise Erric-



Almanac photo by Michelle Le

David Himmelberger and Louise Erricson at their recently opened Erricson-Himmelberger art gallery at 855 Santa Cruz Ave. in downtown Menlo Park.

son, are longtime gallery owners. They had Gallery Europa in Palo Alto for several years, then moved to Sutter Street in San Francisco. They closed that gallery when the lease expired two

years ago.

Ms. Erricson is the real artist in the partnership, says Mr. Himmelberger. "Louise is trained as an artist, but I think I have a good eye. And I know everyone

(of our artists) personally." ■

Erricson-Himmelberger gallery is located at 855 Santa Cruz Ave. in Menlo Park. The phone number is 566-1006.

Residents denied appeal to change school districts

By Barbara Wood
Special to the Almanac

Woodside residents who wanted to have their two streets on the edge of Menlo Park and Redwood City transferred from the Redwood City School District to the Los Lomitas Elementary School District have had their final appeal denied and will have to stay put.

The State Board of Education voted unanimously on Nov. 10 to deny the appeal from the residents of Ward Way and Greenways Drive, and the few homes on Alameda de las Pulgas between them, a total of 43 parcels.

The residents had asked to change school districts back in 2009, arguing that their children should be able to go to school with their friends in Menlo Park and the neighboring streets in Woodside. At the time, all of the school-age children on the two streets were attending private schools.

Their petition was turned down by the San Mateo County

Committee on School District Organization in September 2009, citing a fear that other neighborhoods on the boundaries of their district would also try to move out and worsen the ethnic and economic imbalance in the Redwood City district.

The original petition said: "Our children should have the same opportunity to go to school with their friends and neighbors, thereby keeping the community whole," and argued that the Las Lomitas school was closer to their homes.

Claire Cunningham, the deputy county counsel who represents the Redwood City School District, said the district was pleased with the decision by the state school board.

"From the beginning, the district's primary concern has been the cumulative effect of subsequent transfers should this transfer set a precedent for other neighborhoods," she said. "While the loss of a small number of students from one neigh-

See **TRANSFER**, page 8

Friend of library wins state honors

By Sandy Brundage
Almanac Staff Writer

If it were up to Bill Harris, his award from the state library association would bear at least 30 other names. "The award is the result of volunteers who have been working for years and putting in long hours without being paid," he said.

He recently received the California Association of Library Trustees and Commissioners award for his service as a board member of the Friends of the Menlo Park Library since 1987. For 19 of those years, he's served as board president.

The former construction contractor, who worked on projects as diverse as the Stanford Linear Accelerator and Diablo Canyon nuclear power plant, found himself with time on his hands following retirement. "I showed up one day and they asked me to help set up tables for the book fair," Mr. Harris recalled, and said that he discovered a wonderful group of volunteers there.



Bill Harris credits volunteers for success in raising \$2 million for library programs.

"I've enjoyed working with the people; I can't emphasize that enough. That was the reason I joined!"

The Friends of the Menlo Park Library, a nonprofit group established in 1952 to support the local library, processed more than 250,000 books this year. Some get sold at the annual book fair or at the group's bookstore or even online through Amazon.com; others wind up in the hands of book dealers, including

an antiquarian dealer in San Francisco who handles books worth \$1,000 or more.

Funds raised by the group go toward buying books and equipment for the library and the adult literacy training program, Project Read. They also chip in for special projects such as the stained glass window over the library's entrance.

The Friends have raised more than \$2 million during the past decade, Mr. Harris said, and the public sees the benefit in the form of better equipment, author appearances, and story hours.

As a child growing up within walking distance of the San Francisco Public Library, he delved into H.G. Wells, Jules Verne, and other classics. His tastes in books as an adult expanded into Civil War histories alongside fiction by James Michener and Tom Clancy. He still keeps three or four books going at a time.

See **HARRIS**, page 8

ROBERTS MARKET

SINCE 1889

WOODSIDE • 3015 Woodside Road • 650-851-1511
 PORTOLA VALLEY • 4420 Alpine Road • 650-851-1711
 Open 6:30AM - 8PM

SALE DATES: Nov. 30 - Dec. 1, 2, 3 www.robertsmarket.com

Fresh Produce

BUTTERY & SWEET

COMICE PEARS

99¢
lbVINE RIPE
CLUSTER TOMATOES\$1²⁹/_{lb}LARGE
HAAS AVOCADOS\$1⁵⁹/_{ea}

Meat And Seafood

GROUND CHUCK

\$3⁹⁸/_{lb}

PEELED & DEVEINED

PRAWN
16-20 COUNT\$15⁹⁸/_{lb}

PORK TENDERLOIN

\$5⁹⁸/_{lb}

On Sale Grocery

RICE DREAM ENRICHED DRINK

32 OZ.

\$1⁹⁹DELIZZA BELGIUM
MINI ECLAIRS

14 OZ.

\$3⁹⁹C & H
PURE CANE SUGAR

4 LB. BAG

\$2⁵⁹GREEK GODS
TRADITIONAL YOGURT

6 OZ.

95¢

PROGRESSO
CHICKEN NOODLE SOUP

19 OZ.—ALSO LENTIL

\$2²⁹

Deli Department

HOLIDAY MENU

Main Entrée

Free Range Diestel Ranch Turkeys

Small 10-12 lb. (serves 8 to 10 people)

\$50

Large 16-18 lb. (serves 14 to 16 people)

\$60

These Diestel turkeys are pre-roasted and will need approximately 2 hours to re-heat at 300° in your oven

Prime Rib

Whole (serves approx. 16-20 people)

\$190

Half (serves approx. 10-12 people)

\$100

Boneless prime rib roast cooked to medium rare

Spiral Sliced Ham Baked with honey mustard glaze

Serves 8-10 people

\$65

Sides

Traditional Stuffing \$11.00 qt. \$5.75 pt.

Mushrooms, onions, celery, water chestnuts, and sage

Cornbread Stuffing \$11.00 qt. \$5.75 pt.

Dried cranberries, apricots, and green onion

Mashed Potatoes \$11.00 qt. \$5.75 pt.

Fresh potatoes whipped with cream and butter

Beef Au Jus \$12.25 qt. \$6.25 pt.

Made with pan juices, red wine, and beef stock

Porcini Mushroom Gravy \$12.25 qt. \$6.25 pt.

Rich and creamy made with turkey drippings

Onion Sage Gravy \$12.25 qt. \$6.25 pt.

With red wine, caramelized onions, and sage

Green Bean Almandine \$11.75 qt. \$6.00 pt.

Sautéed shallots, butter, and almonds

Potato Au Gratin Serves 12-14 \$30 per tray

Baked with cheese, garlic, and cream

Fresh Cranberry Sauce \$9.00 qt. \$4.75 pt.

Whole cranberries slow cooked with a hint of orange

Good Earth Bakery 8" Pumpkin Pie \$12.39 ea.

8" pie serves 8 people

GIANNA'S BAKERY

Apple, Cherry, 4 Berry, Sweet Peach Pies \$15.99 ea.

8" pie serves 8 people

9" Pecan Pie \$17.79 ea.

Wine and Spirits

Great Wines, Great Values In the Roberts Wine Dept., quality is always our first concern. Low prices and special deals are everywhere, but are useless unless the wine in the bottle is good. I am always on the lookout for exceptional wines at bargain prices, and that is exactly what these beauties deliver.

2006 Unbridled Cabernet Sauvignon, Sonoma Valley

Complex flavors of sweet cherry, briary blackberry and saffras, firm tannins and rustic silk make this a special wine in its youth, yet still powerful enough to age over time.

Reg \$24.99.... Sale \$16.99

2007 Fog Crest Chardonnay Estate, Russian River Valley

This terrific Chard comes from the collaborative "dream team" of David Ramey and Dan Moore, two of California's most celebrated wine makers. Aromas of hazelnut, citrus, toast and spice are followed by flavors of citrus, apple, subtle oak and complex minerals on the intense, lingering finish. Outstanding!

Reg \$39.99 Sale \$24.99

Kevin Carlsmith, researcher in psychology, dies at 44

Kevin M. Carlsmith died peacefully on Saturday, Nov. 19, from cancer in his boyhood home in Portola Valley, surrounded by his family. He was 44.

An accomplished researcher and professor of psychology at Colgate University since 2003, he earned a Ph.D. at Princeton University in 2001 and a bachelor's degree from Lewis & Clark College in 1989.

His research examined theories of morality and justice in a social psychological context. He was particularly interested in the question of punishment, and of how people perceive the purpose of punishing wrongdoers (i.e., for deterrence or for moral retribution).

He published his findings in numerous journals, and was regularly invited to comment to the news media, including the New York Times, the Los Angeles Times, and the Canadian Broadcasting Corporation, about contemporary issues of punishment, such as analyzing the motivations and justification for the killing of Osama Bin Laden.

A recipient of three grants from the National Science Foundation, he possessed a particular expertise in statistics, an ability that he may have inherited from his father, Stanford professor J. Merrill Carlsmith, who died in 1984.

He grew up in Portola Valley as the son of two academic psychologists. His mother, Lyn K. Carlsmith, died in September.

His other great passion was the outdoors, which he had come to

love as a boy on backpacking trips to Yosemite and the Sierra Nevada mountains, said his brother Chris Carlsmith.

After college he worked at the North Face and served as a river guide and rock-climbing instructor for Outward Bound. He taught for four years at the White Mountain School in New Hampshire.

In 2010-11, he was appointed as a Fellow of the Center for Advanced Study in the Behavioral Sciences at Stanford University.

During that same year, he provided care to his ailing mother Lyn while managing his own health issues, taking care of his family, and arranging his affairs, his brother said.

In addition to his wife, Alison; and daughters, Abby and Julia; he is survived by his brother, Chris Carlsmith of Arlington, Massachusetts, and sister Kim Sampson of Orlando, Florida.

The family asks that photos, written anecdotes, and other memories be sent to the Carlsmith Family, 31 Berenda Way, Portola Valley, CA 94025, in order to help Abby and Julia remember Kevin in years to come.

Visit tinyurl.com/Kevin-193 for more information and to leave remembrances on the Almanac's Lasting Memories website.



Kevin Carlsmith

EDITH SCHNEIDER JEWELRY & CLOTHING



ALLIED ARTS GUILD • 75 ARBOR RD • MENLO PARK
 650-327 2545 • MON - SAT: 10AM - 5PM

Tracking deer to reduce vehicle collisions

■ Biologists aim to put radio collars on deer in Woodside area

By Chris Cooney

Bay City News Service

Starting next month, game wardens with tranquilizer guns might be visible along Interstate 280 in San Mateo County.

Caltrans is funding a study by the University of California at Davis to track deer movement in order to reduce deer versus vehicle collisions along the Interstate 280 corridor, state Department of Fish and Game spokeswoman Janice Mackey said.

Biologists from the DFG and UC Davis will be in the Woodside area between Dec. 2 and Dec. 11, aiming to put radio collars on 15 deer that will help

track their movements in the area over an 18-month period, Ms. Mackey said.

Some deer will be trapped and others will be shot with tranquilizer dart guns.

The California Highway Patrol is alerting motorists that some of the trapping activity might be visible from the highway, which runs along vast tracts of open space, including the San Francisco State Fish and Game Refuge.

The radio collars will automatically fall off the animals after about six months, and another set of 15 deer will be collared for a second phase of the study, according to the

DFG.

The goal of the study is to protect the regional deer population as well as safeguard drivers, Ms. Mackey said.

On Sept. 22 at 8:10 p.m., a San Jose man suffered fatal injuries in a crash that occurred after his car hit a deer on Interstate 280 near Alpine Road, according to the CHP.

Daniel Strickland, 27, stopped on the highway after the collision with the deer and was then struck from behind by another driver who didn't see his car.

Mr. Strickland was taken to Stanford University Hospital, where he died from his injuries on Sept. 23. ■

Defining ideal candidate for town manager

By Dave Boyce

Almanac Staff Writer

The search for someone to take over for outgoing Portola Valley Town Manager Angie Howard has begun in earnest with the Town Council's approval on Nov. 9 of a recruitment brochure, now circulating.

"Straddling the infamous San Andreas Fault," the brochure begins under photographs of peaceful — and upscale — rural scenes, "the Town of Portola Valley values its environmental heritage, excellent public schools, and lean Town government, supported by a multitude of volunteers."

Ms. Howard announced in June that she will be retiring in April. The recruiter, Heather Renschler of Ralph Andersen and Associates near Sacramento, is seeking finalists for the council's consideration in late February, with an offer likely in early March and a choice by mid-March.

The recruiting materials, of course, underwent some refinement.

A draft by Ms. Renschler for council review on Oct. 26 sought someone with "genuine concern" for the town's quality of life who is also an outstanding and forward thinking leader and manager with strong business acumen, skilled at blending innovation and creativity, has

■ PORTOLA VALLEY

unquestionable integrity and ethics, is superior in communicating, and sets an example for open and responsive interactions with others, the public included.

The ideal candidate, the draft continued, "will have a proven track record as a confident and innovative leader who is comfortable operating with an active and involved citizenry (and) will provide options and solutions on an array of topics, always addressing in an open and transparent fashion."

"We left out walking on water," Mayor Ted Driscoll said in opening the discussion with Ms. Renschler.

The brochure described someone "who doesn't exist," Councilman Steve Toben said. "The question is whether all this fluff, all this idealization, will deter people. Maybe this is the way of the public administration world and people are used to reading this kind of fluff."

The draft was meant to evaluate the council's reaction as to which characteristics are most important, Ms. Renschler replied. It's a broad appeal to catch the attention not just of other town managers but also department heads in the public and private sectors who see themselves in at least some of

those traits, she said.

Having heard that, the council added a few traits of their own:

■ Leadership during a catastrophe should be a top priority, given the wildfire and earthquake risks in Portola Valley, Mr. Toben said.

■ The town needs a manager who will stay and not use the job as a stepping stone to a larger enterprise, Mr. Driscoll said.

■ The town is proud of its leadership on environmental matters, Mr. Driscoll said. But as a bedroom community for Silicon Valley and Stanford University, "we don't want a Luddite for a town manager," he said, referring to a 19th century group of radical English textile artisans who opposed the Industrial Revolution.

■ Candidates should be aware of the town's "very small size (and) very involved populace," Councilwoman Maryann Derwin said.

The level of involvement is self evident in the number of committees (17) that advise the council, Ms. Renschler noted. "That's quite unusual," she said.

"I have been receiving calls and inquiries even before it's on the street, so that's always a good sign," she told the council on Nov. 9.

Go to tinyurl.com/PV-manage to view the recruiting materials. ■

San Mateo County awards recognize sustainability, green building

Nominations for San Mateo County's 13th Annual Sustainability and Green Building Awards close Wednesday, Dec. 1.

The sustainability awards recognize San Mateo County entities whose work demonstrates

environmental health, social equity, and economic prosperity. The green building awards honor architects, builders and owners who promote green design and construction within the county.

Go to tinyurl.com/ct3h1r3 to view criteria and download a nomination form. Mail entries to Sustainable San Mateo County, 177 Bovet Road, 6th Floor, San Mateo, CA 94402.



NOTICE OF PUBLIC MEETING AND NOTICE OF PUBLIC HEARING CITY OF MENLO PARK PLANNING COMMISSION MEETING OF DECEMBER 12, 2011

NOTICE IS HEREBY GIVEN that the Planning Commission of the City of Menlo Park, California, is scheduled to review the following items:

PUBLIC HEARING ITEMS

Use Permit/Dan Rhoads/1030 Pine Street: Request for a use permit to demolish a single-story, single family residence and to construct two, single-family dwelling units and associated site improvements, on a lot that is substandard with regard to lot width, located in the R-3 (Apartment) zoning district.

Use Permit/Hoover Associates/3760 Haven Avenue: Request for a use permit for an existing building that would include structural alterations that affect more than 10,000 square feet of gross floor area, a change in use to primarily office uses, and an increase in the number of striped parking spaces. The applicant is also proposing outdoor storage of work vehicles such as service vans and bucket trucks in a new parking lot, which is currently a separate vacant parcel located adjacent to 3760 Haven Avenue. In addition, the applicant is requesting to remove eight heritage trees, mostly eucalyptus trees and generally located along the western perimeter of the site, to accommodate the expanded parking area.

PUBLIC MEETING ITEMS

Architectural Control and Sign Review/John Clarke for SusieCakes/642 Santa Cruz Avenue: Request for approval of architectural control to repaint the exterior façade of a commercial building and for review of a new channel letter sign, containing a red exposed neon tube in the C-3 (Central Commercial) zoning district.

Appeal of Staff Determination/Shannon Thokes/116 O'Connor Street: Appeal of a staff determination regarding 1) the use of a portion of an existing accessory structure as a secondary dwelling unit, 2) the need to obtain a building permit for a previously constructed addition to the accessory structure, 3) the use of a portion of an existing one-car garage for cooking facilities and 4) the legal non-conforming status of the main structure with regard to the front setback for a property located in the R-1-U (Single-Family Urban Residential) zoning district.

NOTICE IS HEREBY FURTHER GIVEN that said Planning Commission will hold a public hearing on public hearing items in the Council Chambers of the City of Menlo Park, located at 701 Laurel Street, Menlo Park, on **Monday, December 12, 2011, 7:00 p.m.** or as near as possible thereafter, at which time and place interested persons may appear and be heard thereon. If you challenge this item in court, you may be limited to raising only those issues you or someone else raised at the public hearing described in this notice, or in written correspondence delivered to the City of Menlo Park at, or prior to, the public hearing.

The project file may be viewed by the public on weekdays between the hours of 7:30 a.m. and 5:30 p.m. Monday through Thursday and 8:00 a.m. to 5:00 p.m. on Friday, with alternate Fridays closed, at the Department of Community Development, 701 Laurel Street, Menlo Park. Please call the Planning Division if there are any questions and/or for complete agenda information (650) 330-6702.

Si usted necesita más información sobre este proyecto, por favor llame al 650-330-6702, y pregunte por un asistente que hable español.

DATED: November 22, 2011 Deanna Chow,
Senior Planner

PUBLISHED: November 30, 2011 Menlo Park
Planning Commission

Visit our Web site for Planning Commission public hearing, agenda, and staff report information: www.menlopark.org

Veteran Hap Halloran laid to rest at Arlington

By Mike Brown of Ladera, a longtime friend of Hap Halloran, who lived in Sharon Heights until his death on June 7. Mr. Halloran was a B-29 bombardier in World War II and prisoner of war in Japan after his plane was shot down over Tokyo.

The last time Raymond (Hap) Halloran was at Arlington National Cemetery, he had accompanied the body of his good friend, Colonel "Pappy" Boyington, from Fresno and then delivered the eulogy for the great Marine war hero. Almost 24 years later, on Nov. 18, 2011, Hap was also laid to rest with full military honors at our country's most hallowed ground.

On this cold fall day, on a hillock against a crystal-



Hap Halloran

line blue sky overlooking the nation's capital, several dozen soldiers in dress blues joined into casket team, escort platoon, military band, firing party and bugler.

Hap's urn was reverently transferred into the waiting caisson. Family and friends then processed silently for 400 yards behind the horse-drawn caisson, honor guards and band to the columbarium and grave-side service.

After a Catholic chaplain conducted a prayer service, a signal was given and from across a field the firing party and a lone bugler's chilling Taps saluted Hap's coming to rest.

Our nation's Army proudly organizes itself every day at Arlington to pay proper tribute to military men and women who have sacrificed much for their



Photo by Rosa Halloran, wife of Hap's son Dan

Hap Halloran's urn is transferred into the waiting caisson at Arlington National Cemetery.

country. Hap Halloran joined their ranks on Nov. 18 and Hap's abiding attributes are contained

in the cemetery's vision: "Where dignity and honor rest in solemn repose." ■

Go to tinyurl.com/Hap-193 for more about Hap Halloran.

Sweidy challenges appointment of Flint

By Barbara Wood

Special to the Almanac

An Atherton resident who has been tangled up in legal actions with the town and her contractor over problems with her home's construction is claiming that it is

ATHERTON

not legal for Atherton's interim police Ed Flint to also serve as acting interim city manager.

Kimberly Sweidy sent an email to Atherton city officials Nov. 22 protesting the recent appointment of Chief Flint when inter-

im city manager John Danielson became seriously ill while on a trip out of state.

Ms Sweidy, who is an attorney, says that a legal opinion issued by the California Attorney General in another case says that a police chief can not serve as a city manager because he would be, in effect, managing him or herself.

"My concern is for the day to day conflicts that arise when the

Police Chief is acting as his own supervisor," Ms. Sweidy wrote. "Unfettered power, backed by the legal use of force, are my concern, and should be the concern of every freedom-loving American."

Atherton city attorney Bill Connors responded to Ms. Sweidy, saying that because Mr. Flint is simply the "acting" interim city manager, the legal precedents do not apply.

"The acting official does not hold any office, merely acts on

behalf of the true office holder," Mr. Connors wrote in his response to Ms. Sweidy's complaint. "He or she is not paid extra to act on behalf of the Manager, nor does he assume any special duties or privileges while so acting. ... The duty is limited to acting in those areas where action is required before the real office holder can return." ■

Visit tinyurl.com/Flint-684 to see the exchange of comments on this topic.

MENLO PARK LIBRARY

(EST. 1952)

Book Sale

All Proceeds Benefit the Menlo Park & Belle Haven Libraries

Sunday
Dec. 4



Noon to
4:00
Downstairs
Meeting
Room

Select from a wide variety of beautiful gift-quality books. Art, biography, collectible, cooking, fiction, history, literature, mystery, religion, sci-fi, holiday, children's and young reader's titles and much more.

Please also shop at the Friends' Bookstore located in the library's lobby. Open during library hours and stocked with books for your whole family.



Great Books. Great Prices. Great Cause.

Menlo Park Library | 800 Alma Street



TRANSFER

continued from page 5

neighborhood would not substantially impact the district's revenue limit, the loss of numerous border neighborhoods would."

The report on the transfer said the homeowners would see a substantial increase in their home's values with the transfer. "If the transfer were approved,

the property values of the petitioners would increase 15 to 20 percent or \$150,000 per bedroom," the report to the state board said.

The Redwood City School district's demographics vary widely from those of its wealthier neighboring districts.

For example, while Redwood City in the 2009-10 school year spent \$9,097 to educate

each student in the district, Las Lomas spent \$13,413, the Menlo Park City School District spent \$11,283 and the Woodside Elementary School District spent \$20,211 per student.

In that school year, the Redwood City district had only 21.3 percent white students while Las Lomas had 70.5, Menlo Park had 66.9 and Woodside had 78.4. ■

HARRIS

continued from page 5

Helping the Menlo Park Library ran in the family. After his wife Myrtle died about six years ago, he discovered that, unbeknownst to him, she'd also clocked hours at the library pricing books while their three sons were in school. He found out after a friend mentioned work-

ing with her.

Asked what he thinks about people who predict libraries will become obsolete, Mr. Harris laughed and smiled. "I think the libraries will outlive them," he said.

Still, that does bring to mind one of the challenges facing the library. "Are people going to keep contributing books to us? Or are they switching to Kindles?" he

mused. But library donations continue to grow. "We're not recycling books; we're recirculating. So far we're doing good."

Donations are welcomed at the library's back door, where volunteers working in the basement — thus earning their nickname of Moles — sort and scan each item to determine its value. Any books that can't be sold are given away once a week. ■

Lots of locals in 'Nutcracker' ballet

Local students will perform with a cast of nearly 100 dancers in Ballet America's 17th annual production of "The Nutcracker" at 7 p.m. Friday, Dec. 2, at the Fox Theatre, 2215 Broadway in Redwood City.

Former Joffrey Ballet professionals Maia Wilkins and Michael Levine will dance as the Sugar Plum Fairy and her Cavalier.

Rachel Cochran of Woodside will be dancing the part of Clara. Chloe Moissis of Portola Valley will dance en pointe as the Marzipan Shepherdess. Anna Kubicka of Portola Valley will perform with the dragon in the Chinese Tea sequence.

Allegra Mangione of Menlo Park will dance as Rose Duet and Kyrie Vesely of Menlo Park will be Drosselmeyer's Doll.

Other local performers include Thea McDonald and Jacklyn Abbey of Woodside; Katherine Byunn-Rieder, Charlotte



Dancing in the Dec. 2 Ballet America production of "The Nutcracker" are, from left, Rachel Cochran of Woodside, as Clara; Anna Kubicka of Portola Valley, dancing the Chinese Dance; and Chloe Moissis of Portola Valley, dancing as the Marzipan Shepherdess.

Singer and Anna Arbuckle of Menlo Park; Audrey Fallon of Atherton; and Emily Harris of Portola Valley.

Visit balletamerica.org or call 650-FOX-7770 to order tickets, ranging from \$18 to \$39.

Alfred J. Gardner

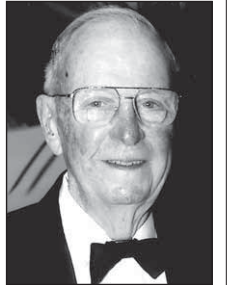
Jan. 13, 1920 – Oct. 28, 2011

Alfred James Gardner passed away at Stanford Hospital recently at the age of 91. He is survived by his wife of 69 years, Florence, daughter Carol, son Alfred, son-in-law James, 3 grandchildren and 6 great-grandchildren.

Al had a wonderful life. He served 22 years in the U.S. Air Force and was employed at Lockheed Missiles and Space Company for 15 years. He received many awards for his years of service including the Air Medal with 3 Oak Leaf Clusters and the Distinguished Flying Cross with 2 Oak Leaf Clusters.

In civilian life he enjoyed numerous organizations and received special awards in many of them.

He and Florence enjoyed traveling and cruising. He was especially proud of his family and their accomplishments. There will be no service.



PAID OBITUARY

Renovating Ford Field: Cost doubles

By Dave Boyce

Almanac Staff Writer

It may be time to lay aside such bland euphemisms as "project" and "plan" and give the proper name to efforts to obtain state funding to renovate Portola Valley's Ford (baseball) Field: quest.

Originally funded at \$255,000 in 2008, with \$232,000 of that coming from state grants, the project is now estimated to cost between \$450,000 and \$500,000. The state grants would now cover about half the project at the corner of Alpine Road and Westridge Drive, with the rest left to fundraising by the Little League, the only organized user of the field, Town Manager Angela Howard said.

It's taken so long because the state froze the grants in December 2008, restored them in September 2010, reassured recipients of their availability some months later, and then

PORTOLA VALLEY

issued a retraction of a sort. Now the reassurance is back on, with an expiration set for June 30, 2015.

Based on three community workshops, the original plans called for changes that included shade trees along the first- and third-base lines and new "social space," including picnic tables, bleachers and a grassy knoll behind left field.

The batting cage and pitcher warm-up area would be smaller, and there would be permanent bathrooms and a snack shack. The field would be rotated a few degrees to the east to improve the bank of Los Trancos Creek.

The grants would come as reimbursement; the town must stick its neck out and begin building on its own.

"A year ago, (the money) was gone. Will it be gone in another six months?" Councilman Steve

Toben wondered at the Nov. 9 council meeting.

"We want to be one of the first in line to get reimbursed," Ms. Howard said.

Mr. Toben added that while he said he was ready to ask the Little League to proceed with fundraising, he wanted to avoid a scenario of having to ask them to double their goal, or having to tap the town's general fund to cover gaps.

If the Little League can raise the money — and they probably can, Ms. Howard told the council — the council would go with a deadline of Dec. 31, 2012, for delivery of the funds, which gives time for analysis and staging so as to start the project after July 2012.

"And to be clear," Mr. Toben added, "the idea is not for Little League itself to contribute all the funds, but for Little League to be the locus of a community-wide outreach and fundraising effort." ▀

Special rummage sale at Woodside Village Church

No, your eyes are not deceiving you. There will, indeed, be a rummage sale at the Woodside Village Church this week; just not the traditional sale.

Since the church chapel was built in 1891, the church has been holding sales to pass on the community's cast-offs. For as long as anyone still around can remember, the church has

held one sale in the spring and one in the fall.

But this week a special sale will be held on Friday and Saturday, Dec. 1-2, and will feature only furniture and collectibles, antiques and other selected items that are usually found in the sale's "boutique" section.

The special sale has been scheduled because the church has had

a hard time finding room to even display all the donations that come in for the sale during the usual twice-yearly sales.

The sale hours will be Friday, from 9 a.m. to 4 p.m., and Saturday, from 9 a.m. to noon, in the church's Guild Hall at 3154 Woodside Road. There will be no early admissions.

— Barbara Wood



speck

THE STORE
EST. 2011

sweet gifts for gadget geeks!

TRY ON OUR COLORFUL, CLEVER CASES
FOR IPHONE, IPAD, MACBOOK AND MORE!



A downtown Palo Alto company since 2001

.....

212 HOMER AVE (AT EMERSON) • PALO ALTO
HOLIDAY HOURS: 7 DAYS/WEEK • 10AM-5PM
(OR ONLINE 24/7 @ SPECKPRODUCTS.COM)

Thank you for helping us
celebrate our 40th
Christmas in Menlo Park



- Breakfast
- Lunch
- A Relaxing Afternoon
- Apertivo
- Dinner
- Live Music



Cafe
BORRONE
MENLO PARK
ART GALLERY COFFEE HOUSE

1010 El Camino Real, Menlo Park
tel: 650.327.0830 • www.CafeBorrone.com
Sun-Mon 7am - 5pm • Tues-Sat 7am - 11pm

Christmas at Village

Come in and see our wide selection of
Boxed Cards • Holiday Invitations • Gift Wrap
Greeting Cards • Gift Bags • Ribbons & Bows
Gift Tags • Holiday Crackers and More!

VILLAGE STATIONERS

For all of your Holiday needs!

MENLO PARK
719 Santa Cruz Ave.
650.321.6920

PALO ALTO
310 California Ave.
650.326.7970



*Treat
Her Special
This Season...*

Aubade Chantelle
LISE CHARMEL MARIE JO
PRIMA DONNA [Wolford]

ANDRES SARDA marlies|dekkers

*Exquisite European
Lingerie, Sleepwear,
and Hosiery from...*



1139 Chestnut Street
Downtown Menlo Park
650.325.2965 • Mon-Sat 11-6

Celebrating 21 years of
bringing value to luxury



afterwards

*The premiere consignment store on the Peninsula
for women's and men's clothing,
home furnishings, art and antiques*

1159 El Camino Real, Menlo Park
650.324.2377
Hours: Mon-Sat 10 AM-6PM



For the
19th
Consecutive
Year

THE PET PLACE

"Not a chain... just one special store"

A full line of pet supplies, accessories
and gifts for your dogs, cats,
rabbits, small animals, reptiles,
amphibians, birds and fish...also wild
creature supplies.

- Orijen • Great Life • Innova • Wellness
- Solid Gold • Canidae • Nat. Planet Organics
- Natural Balance • Wysong • Felidae
- Sweet Harvest • Oxbow • Nats. Variety &
Primal Raw Frozen Food • and much more

**OPEN
SUNDAYS**
11am-3pm

We Offer Personalized Service, Problem Solving, Referrals & Information, Nutritional Counseling,
Outstanding Beds, Books, Toys & Treats, Competitive Prices, Senior Discount

Owners Lynn and Marc Macy

Life-long Menlo Park residents, dedicated in every way to the welfare of animals.
Co-founders of the Stanford Cat Network, and Pet Prints, Professional Animal Photography since 1986.

"... While visions of The Pet Place danced in their heads..."



Winner of
Golden Acorn Award
For Professional Excellence
and Community Service



777 Santa Cruz Avenue, Menlo Park • 325-PETS
Monday - Friday 10-6 • Thursday til 8 • Saturday 10-5



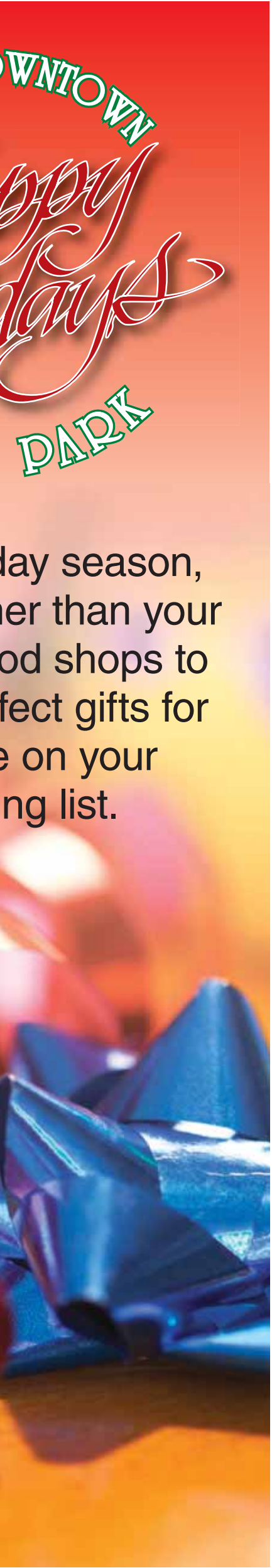
U.S. Retailer
of the year

SHOP DO

*Flava
Floria*

MENTLO

This holic
look no furth
neighborho
find the per
everyone
shopping



DEDICATED TO HUMAN MOVEMENT



\$40 FOR 30 DAYS OF UNLIMITED CLASSES
 First time clients only. 30 Days begin when the first class is taken. Not transferable, no refunds. Excludes Ashtanga, Mysore

PILATES, YOGA FOR ALL LEVELS, BODY ROLLING, ZUMBA, BACK CARE

 VOTED BEST YOGA STUDIO

MENLO PILATES AND YOGA
 1101 El Camino Real
 408.480.8977 | www.menlopilates.com



Erricson
 Himmelberger
 Gallery

AFFORDABLE ART

855 Santa Cruz Avenue
 Menlo Park
 650.566.1006

Menlo Park Hardware ACE



Large Selection of Christmas Lights

Please stop by our New Store expansion, featuring new products and services.

700 Santa Cruz Ave, Menlo Park 650-325-2515

No matter how you slice it...
Our pizza is the BEST!

2011-2013
 



Menlo Park
 1001 El Camino Real
 324-3486

Pizza-2-Go
 989 El Camino Real
 328-1556

We Deliver!
 Applewood San Carlos
 Coming Soon!



The Bird's Got the Word



Holiday Gift ideas whether your bird is still in the nest or long in the beak

 **cheeky monkey TOYS**

640 Santa Cruz Avenue, Menlo Park
 650-328-7975 • www.cheekymonkeytoys.com

Family Holiday



The True Meaning of the Holidays!
 Family, Fun and Gifts of Art, from the Heart

10% OFF all platters

**602 Santa Cruz Avenue
 Menlo Park • 650-328-4486**

Visit us at www.colormeminenmenlopark.com
 Must present coupon. Expires 12/31/11

 **Color Me Mine**
 The Art Of Having Fun

**MENLO PARK CITY SCHOOL DISTRICT
BOND OVERSIGHT COMMITTEE**

OPEN POSITIONS

The Menlo Park City School District is seeking potential candidates to fill open positions on the Bond Oversight Committee. In June 2006, voters within the Menlo Park City School District boundaries approved the Measure U Bond to modernize and provide new school facilities. The Bond was passed per Proposition 39, which requires the creation of a Bond Oversight Committee. This volunteer committee was created in September 2006 and is responsible for performing oversight activities such as review of bond expenditures and preparation of annual reports as set forth by Proposition 39. The Committee meets at minimum on a quarterly basis. The Committee is comprised of seven people from different segments of the Community. The District is currently seeking to fill three vacant positions. One position for a person active in the business community, one position for a person active in a senior citizens' organization, and one position for a person active in a bona fide tax payers' organization. The person must be at least 18 years old and a resident of the School District. For any further questions, please call Ahmad Sheikholeslami at 650-321-7140. If you are interested in this position, please submit a Letter of Interest as well as background information about yourself and the organization in which you are active to: ahmad@mpcsd.org or to:

Menlo Park City School District
Attn: Ahmad Sheikholeslami
181 Encinal Ave.
Atherton, CA 94027

Portola Valley holds holiday fair, auction

The Portola Valley Holiday Fair will return to the Old Schoolhouse at 765 Portola Road on Saturday, Dec. 3, from 10 a.m. to 4 p.m.

Paintings, jewelry, woodcrafts, hand-knits, temari balls, greeting cards, local honey, and edible treats (by local Brownie troops) are some items that will be for sale by local artists, craftspeople and businesses.

Santa will visit, soon after his visit at the Ladera Christmas Fair. A percentage of the proceeds will benefit the Portola Valley Open Space Fund and the Portola Valley School District.

Email pvholidayfair@gmail.com for more information about the fair, sponsored by the Portola Valley Cultural Arts Committee.

Kids' Auction

This year's fair will be held in conjunction with Portola Valley's Kids' Holiday Auction, sponsored by the Portola Valley Schools Foundation. This will take place on the same day as the Fair from 1 p.m. to 3:30 p.m. at the Portola Valley Town Center Community Hall.

This event will feature an auc-

tion of gifts created by each class of the Portola Valley schools (grades kindergarten through 8) and a raffle with a grand prize and many smaller prizes. Entertainment will include music performed by a student jazz group, a magic show, and holiday crafts.

Ladera

The merchants at Ladera shopping center are continuing the 22-year holiday tradition of hosting a Christmas Fair. This year it will be held from 11.30 a.m. to 1 p.m. Saturday, Dec. 3.

Patty Cullen from Konditorei says Santa will arrive on a fire

truck at 11.30 a.m. and pose for photos at Konditorei as usual.

Other highlights include: decorating cupcakes at Bianchini's; face painting at Allegro Framers; bulb planting at the Ladera Garden Center; a pinata at Amigos Grill; balloons at the newly opened Lobster Shack; cookies and drinks at Chase bank; Madrigal Singers at Round Table Pizza; and decorating eye-glasses at Alpine Optometry.

The Windy Hill Blue Grass Band will play. Toy for the "Toys for Tots" program are being collected at the Ladera UPS store.

The shopping center is at 3130 Alpine Road in Ladera.

Model railroad show Dec. 9-11

Model trains in three scales will be on display and operating at the West Bay Model Railroad Association's annual Christmas show to be held Dec. 9-11 at the model railroad building on Merrill Street between Ravenswood Avenue and the Menlo Park train station in Menlo Park.

Railroad memorabilia will also be on display.

Hours are 7 to 10 p.m. Friday, Dec. 9, noon to 6 p.m. Saturday, Dec. 10, and noon to 5 p.m. Sunday, Dec. 11.

Admission is free, but donations are appreciated.

Visit wbmrra.ning.com or call 322-0685 for more

information.

Girl Scouts collect coats

Sixty Girl Scouts at Laurel Elementary School in Menlo Park collected more than 100 warm coats and sweaters in November, according to Grace Zales, troop leader and volunteer director of South County Girl. Troops 61720, 62090, 61592, 61701, 61767 and 61722 participated.

Donated by Laurel families as part of the school's year-round "Caring and Sharing" program, the winter clothing will be given to children living in Shelter Network's transitional housing.



Aging Parents? We Can Help?

Why is Home Care Assistance the leading choice for older adults in the Bay Area?

- We provide high quality, bonded and insured caregivers, who are experienced in care for older adults.
- We are the leader in 24 hours a day, 7 days a week live-in care.
- We provide the culinary training for our caregivers at *Sur La Table*, to improve their skills and our clients' meals.
- Our experts wrote the books *Handbook for Live-In Care* and *Happy to 102*, available on Amazon.com. They are a resource for the industry as well as families.



Call for a FREE consultation:

650-462-6900

HomeCareAssistance.com

148 Hawthorne Ave, Palo Alto, CA



Imagine:

Three years of computer science for your middle school daughter
A 7th grader pitching a business she created to Silicon Valley investors
Social and emotional growth entwined with academics
Project-based, 21st century education from the day the doors opened
A school that gets it all right

The Girls' Middle School

Just imagine



Open Saturday, November 12, 1pm
Houses: Thursday, December 8, 7pm

3400 West Bayshore Road, Palo Alto
650.968.8338 • www.girlsms.org

Woodside singer, actress releases single from album

Sixteen-year-old Julia Belanoff of Woodside has just released "Goodnight San Francisco," the first single from her upcoming classical-pop album, "Winner in Your Heart," which will be released in January.

"Goodnight San Francisco" is now available on iTunes.

The album of original songs is being produced by Max DiCarlo, who has worked with Elton John, Donna Summer and other top recording artists.

A junior at Woodside High School, Julia studies voice with Debra Lambert, chairman of the department of music and vocal arts at Notre Dame de Numur University. Active in local theater since she was a child, she met her manager, Michael Lederman, while auditioning at Coastal Theatre in Half Moon Bay, where he was artistic director.

She is appearing through Dec. 4

as Tillie in "The Effect of Gamma Rays on Man-in-the-Moon Marigolds" at Custom Made Theatre in San Francisco.

In 2010 she was a singer and "dancing elf" on a float in Macy's Thanksgiving Day parade in New York City.

Julia describes "Goodnight San Francisco" as a love song to the city. She composed the song one hot, humid night, while enrolled in a summer program at Columbia University in New York

City. "I thought about how cool and nice San Francisco is, even during the summer. New York is where I will probably eventually live, but I will always consider the Bay Area my home," she says.

Julia is the daughter of Concept Therapeutics CEO Joseph Belanoff, M.D., and Katherine Blenko, M.D.



Photo by Cynthia Smalley

Julia Belanoff

Get what you want, for free, at Alice's

By Dave Boyce

Almanac Staff Writer

Thanksgiving Day is not known for its songs. There's "Over the River and Through the Woods," and there's "Alice's Restaurant," a sordid tale of littering, being arrested, mixing it up with other ne'er-do-wells, and evading the draft. There are upbeat moments, including two Thanksgiving dinners that "couldn't be beat."

In the spirit of that last item, the management and staff of Alice's Restaurant, at Skyline Boulevard and Highway 84 in Woodside, offered free meals all day long on Thanksgiving Day, including free reservation-only dinners on white table cloths, restaurant owner Andy Kerr said in a telephone interview. Donations, including tips, go to the Second Harvest

Food Bank.

Now in its fifth year, this event typically raises about \$10,000 for the San Carlos-based food bank, Mr. Kerr said. The celebration recognizes the Thanksgiving Day events in Stockbridge, Massachusetts, in 1965 that led to the song by Arlo Guthrie and the 1967 album "Alice's Restaurant."

"We thought it would be fitting to do something for charity on that day," Mr. Kerr said. "There are no prices on anything."

Customers ask, "How much is my bill?" and we say, "You really don't have one," Mr. Kerr said. "We get some people that don't leave anything. We have other people that have a cup of coffee and leave \$200."

Everything is made from scratch, Mr. Kerr added, including pumpkin soup this year and four varieties of pies. The turkeys and other main course meat dishes are donated. "It's a very nice day," he said. ■

CALENDAR

Visit AlmanacNews.com/calendar to see more calendar listings

Special Events

Holiday Home Tour The Junior League of Palo Alto/Mid Peninsula will host its fourth annual fundraiser, "Finishing Touches: A Holiday Tour of Fine Homes and Boutiques," Dec. 2-3, 10 a.m.-3 p.m. Rosewood Sand Hill, 2825 Sand Hill Road, Menlo Park.

Alternative Gift Market Trinity Church in Menlo Park is hosting an Alternative Gift Market on two consecutive Sundays, Dec. 4 and 11. Proceeds support a variety of nonprofit organizations and benefit those in need. Dec. 4, 11, 11 a.m.-1 p.m. Trinity Church, 330 Ravenswood Ave., Menlo Park. Call 650-326-2083.

Nativity School Christmas Tree Lot An all-volunteer run fundraiser for Nativity School. Trees available: Douglas, Grand, Fraser, and Noble Firs; wreaths and garland; flameproofing and delivery services. Through Dec. 17, Nativity School, 210 Oak Grove Ave., Menlo Park. www.nativitytrees.com

On Stage

'The Secret Garden' TheatreWorks presents the musical adaptation of "The Secret Garden," based on the classic novel about a young orphan who discovers a hidden garden. Through Dec. 31, 8-9:45 p.m. \$19-\$72. Lucie Stern Theatre, 1305 Middlefield Road, Palo Alto. Call 650-463-1960. theatreworks.org

Talks/Authors

'Harry's Last Lecture' with Marian Wright Edelman This lecture honors the late Stanford Law Professor Harry Rathbun, who delivered his "Last Lecture" from the 1930s through the 1950s. Marian Wright Edelman, founder of the Children's Defense Fund, will speak to students on how purpose and values lead to a fulfilling life. Nov. 30, 3-4:30 p.m. Free. Stanford Memorial Auditorium, 551 Serra Mall, Stanford. Call 650-723-1762. athbun.stanford.edu/2011.html

'Is a City Manager Worth \$800,000?' Learn how a team of Los Angeles Times reporters exposed corruption in the small town of Bell, California. The John S. Knight Journalism Fellowships at Stanford and the Pulitzer Prizes present a conversation with Ruben Vives, Jeff Gottlieb and Paloma Esquivel. Nov. 30, 7-8:30 p.m. Free. Paul Brest Hall at Stanford, 555 Salvatierra Walk (off Campus Drive), Stanford.

Frank Close, a professor of theoretical physics at Oxford University, will discuss his book, "The Infinity Puzzle: Quantum Field Theory and

the Hunt for an Orderly Universe" on Dec. 6 at 7 p.m. Purchase of event book or \$10 gift card admits 2. Kepler's, 1010 El Camino Real, Menlo Park. Call 650-324-4321.

Richard Heinberg "The End of Growth" describes what policy makers, communities, and families can do to build a new economy that operates within Earth's budget of energy and resources. Dec. 8, 7 p.m. Purchase of event book or \$10 gift card admits 2. Kepler's, 1010 El Camino Real, Menlo Park.

Community Events

'Every Friday is Black Friday' Fridays through Dec. 23 all black (and mainly black) dog and cat adoptions will be adopted at no charge, and all other colors will be adopted at half price. Noon-5 p.m. Pets In Need, 871 Fifth Ave., Redwood City. Call 650-367-1405. www.PetsInNeed.org

'Giving Blood Saves' Donate blood at any Stanford Blood Center location by Dec. 6 and attend a free financial planning presentation on Dec. 6. Conducted by Pat Vitucci and Associates, this seminar will include estate planning with attorney Kira King. 7:30 a.m.-7:30 p.m. Free. Stanford Blood Center, 3373 Hillview Ave., Palo Alto. Call 650-723-7265.

Holiday Skating on the Square Downtown Redwood City hosts an outdoor skating rink through the winter, noon-10 p.m. \$12 —skates are free. Courthouse Square, 2200 Broadway St., Redwood City.

LWVSSMC Education Lecture "School Reform in the U.S.: Is There Hope?" by Deborah Stipek, Professor of Education, Stanford University. Nov. 30, 7-9 p.m. Free. Veterans Memorial Senior Center, 1455 Madison Ave., Redwood City. www.lwvssmc.org

Concerts

'Voce Dramatica!' Vocalist Leslie Keenan teams with dramatic tenor Orlando McCorkle and soprano Deanna Knickerbocker, accompanied by pianist Dmitry Cogan. Dec. 3, 3:30-5 p.m. Donation for InrVision \$10-20. Ladera Community Church, 3300 Alpine Road, Portola Valley. Call 650-255-1792. www.lesliesings.com

KITKA Women's Vocal Ensemble: 'Wintersongs' Seasonal music from a variety of Eastern European ethnic and spiritual traditions, including Slavic folk carols and ethereal sacred works. Dec. 4, 4-6 p.m. Advance: \$27/\$25/\$15. Door: \$32/\$30/\$15 (\$5 for children under 12). St. Bede's Episcopal Church, 2650 Sand Hill Road, Menlo Park. Call 510-444-0323. www.kitka.org

Stanford Symphony Orchestra The Stanford Symphony Orchestra, conducted by Jindong Cai, gives its first concert of the season with a performance of Mahler's Symphony No. 5 and Schumann's Cello Concerto in A minor.

SUPPORT LOCAL JOURNALISM
Join today:
SupportLocalJournalism.org

Dec. 2, 8 p.m. \$5-10. Dinkelspiel Auditorium on Stanford Campus, Stanford.

Kids & Families

Jenni Holm: 'A Very Babymouse Christmas' The holidays are here and everyone's enjoying their favorite traditions — eating latkes, decorating for Kwanza, singing holiday songs, and most of all, being with family. Well, everyone except Babymouse. Babymouse only has one thing on her mind: presents. Dec. 7, 6 p.m. Free. Kepler's, 1010 El Camino Real, Menlo Park. Call 650-324-4321.

Preschool Storytime Songs, stories and activities for kids ages 3-5. Mondays, 11 a.m.-11:45 a.m. Free. Atherton Library, 2 Dinkelspiel Station Lane, Atherton. Call 650-328-2422. www.smcl.org

Et Alia

'Blogging for Beginners' Learn how to build a simple blog (web log), create and edit postings, design a page, add gadgets, incorporate hyperlinks, photos, videos and audio. Dec. 3, 9:30-10:30 a.m. Free. Woodside Library, 3140 Woodside Road, Woodside. Call 650-851-0147. www.smcl.org

Ballet America's 'Nutcracker' This production includes a cast of 100 local dancers alongside former principle dancers from the Joffrey Ballet. Kids can dress up like Nutcracker characters at intermission and afterward, meet the cast onstage. Dec. 2, 7 p.m. \$18-\$39. Fox Theater, 2219 Broadway, Redwood City. www.balletamerica.org

'Thrive: What on Earth Will It Take?' "Thrive" is a documentary that follows global consolidation and money. Dec. 3, 6:30 p.m. Advance: \$12; door \$16. Kepler's, 1010 El Camino Real, Menlo Park. Call 650-324-4321.

Holiday Handbell Concert The San Francisco State University Handbell Choir will ring in the holiday season at the History Museum. Dec. 3, 1-2 p.m. Free. San Mateo County History Museum, 2200 Broadway, Redwood City. Call 650-299-0104. www.historysmc.org

'Occupy Wall Street' World Centric will show a selection of Occupy videos and discuss the movement. Dec. 2, 7:30-9:30 p.m. Free. World Centric, 2121 Staunton Court, Palo Alto. transitionpaloalto.org/

'Rodin and America' An exhibit on sculptor Auguste Rodin's influence on American artists. Through Jan. 1, 11 a.m.-5 p.m. Free. Cantor Arts Center, 328 Lomita Drive, Stanford.

ALLIED ARTS GUILD
75 ARBOR RD - MENLO PARK



Artisan Shop & Studios • Scenic Gardens
Historical Architecture • Events & Meeting Facilities

ALLIED ARTS HOLIDAY ANNEX NOW OPEN!

December 3rd Christmas Market 10-5pm
and December 4th Children's Holiday Party 1-3 p.m.

For more details, please see our website:
www.alliedartsguild.org Or Call (650) 322-2405

cp *café primavera* (650) 321-8810

A TASTE OF THE PENINSULA
A cornucopia of restaurants and cafes providing the finest dining from brunch to dessert.

Breakfast, Lunch & Dinner

Vive Sol-Cocina Mexicana
2020 W. El Camino Real, Mtn. View
(650) 938-2020

Specializing in the Cuisine of Puebla.
Open daily for lunch and dinner.

Coffee & Tea

Connoisseur Coffee Co.
2801 Middlefield Road, Redwood City
(650) 369-5250 9am-5:30pm Mon. - Sat.

Coffee roasting & fine teas,
espresso bar, retail & wholesale.

To Advertise in "A Taste of the Peninsula" call The Almanac 650-854-2626.





NOTICE OF INTENT TO INCREASE SOLID WASTE / RECYCLING RATES AND ESTABLISH FEES FOR SUPPLEMENTAL SERVICES IN THE CITY OF MENLO PARK

The City Council of the City of Menlo Park hereby gives public notice of its intent to increase the existing solid waste / recycling base rates for customers within the City of Menlo Park for the collection of solid waste and recyclable materials. Also, the Council hereby gives public notice of its intent to increase the existing fees for supplemental services not covered in the base rates. These increases, if approved, will be effective on **January 1, 2012**. The City Council plans to consider these increases at a public hearing on **December 13, 2011 at 7:00 p.m.** in the City of Menlo Park Council Chambers Building at 701 Laurel Street - Civic Center.

What are the proposed new base rates: Several rate schedules will be considered at the public hearing. However, the maximum increase in monthly base rates the Council will consider for both residential and commercial service is 10%.

Residential - The chart below shows the current monthly base rates by cart-size and service location (curbside and backyard) and the maximum monthly rates to be considered for residential customers.

CART-SIZE (gallons)	RESIDENTIAL MONTHLY PER CART-SIZE RATES							
	CURBSIDE SERVICE				BACKYARD SERVICE			
CURRENT RATE	\$ 12.95	\$ 21.67	\$ 51.84	\$ 77.52	\$ 16.31	\$ 29.09	\$ 67.20	\$ 100.55
MAXIMUM RATE TO BE CONSIDERED	\$ 14.25	\$ 23.84	\$ 57.02	\$ 85.27	\$ 17.94	\$ 32.00	\$ 73.92	\$ 110.61

Commercial and Multi-family Residential - Solid waste and recycling services available for commercial and Multi-family Residential customers include: commercial cans and bins, compactors, and the organics program. The base rates for these services are determined not only by the type of service but also the service frequency. Consequently, there are over 500 solid waste and recycling services and rates available. A detailed listing of the current monthly base rates for these services and the maximum proposed monthly base rates can be obtained from the Finance Department located on the second floor at City Hall, 701 Laurel Street, on-line at the City's website at the following link <http://www.menlopark.org/departments/fin/2011MaxRates.pdf>, or by calling 650-330-6644.

What are the proposed new rates for supplemental services: The City Council will also consider increasing the fees for supplemental services provided by Recology San Mateo County for services that are not covered in the base rates. The use of these supplemental services is discretionary and the resulting fee is the responsibility of the service recipient.

Residential - The supplemental services offered and the recommended fees are listed below.

Return Trip Cost \$17.20 (per collection event) for collection service provided after the regularly scheduled collection

Additional Targeted Recyclable Materials or Organic Materials Cart Rental or Purchase - Rental \$3.05 per month, Purchase 64 gallon cart \$72.25, Purchase 96 gallon cart \$79.13

Fee to Collect Contaminated Targeted Recyclable Materials or Organic Materials Container - 25% of the base monthly rate for the size of the container collected once per week plus \$15.25

Key Service - \$9.66 per month, Lock Purchase \$19.50 (one-time per account)

Overage Fee - 100% of the base monthly rate per collection event and Overage Tag (bag) fee 50% of the base monthly rate or a minimum of \$8.13 (whichever is greater) - per tag (bag)

Container Cleaning - \$57.34 per Cart, \$97.48 per Bin or Drop Box

Dirty Cart Replacement - \$66.08 for 20 gallon or 32 gallon cart, \$76.25 for 64 gallon cart, \$86.42 for 96 gallon cart

On-Call Bulky Item Collection - \$93.52 for each collection after the first two per year

Commercial and Multi-family Residential - The services offered and the recommended fees are listed below.

Distance Charges for containers located between 51 to 100 feet from access point for contractor's collection vehicle - 10% of the monthly base rate

Distance Charges for containers located between 101 feet or more from access point for contractor's collection vehicle - 25% of the monthly base rate

Extra Pick-up fee - 25% of the base rate for the size of container collected once per week - per collection event

Additional Targeted Recyclable Materials or Organic Materials Cart Rental or Purchase - Rental \$3.05 per month, Purchase 64 gallon cart \$72.25, Purchase 96 gallon cart \$79.13

Fee to Collect Contaminated Targeted Recyclable Materials or Organic Materials Container - 25% of the base monthly rate for the size of the container collected once per week plus \$15.25

Key Service - \$9.66 per month, Lock Purchase \$19.50 (one-time per account)

Overage Fee - 100% of the base monthly rate per collection event and Overage Tag (bag) fee 50% of the base monthly rate or a minimum of \$8.13 (whichever is greater) - per tag (bag)

Container Cleaning - \$57.34 per Cart, \$97.48 per Bin or Drop Box

Dirty Cart Replacement - \$66.08 for 20 gallon or 32 gallon cart, \$76.25 for 64 gallon cart, \$86.42 for 96 gallon cart

Necessity for new rates and new fees: As a result of the Franchise Agreement between the City of Menlo Park and Recology San Mateo County (Recology) and the expired contract with Allied Waste, rates must be set to adequately meet the revenue requirements of Recology to provide the service going forward and also provide funds sufficient to payoff the City's debt to Allied Waste for the cost of services provided in prior years in excess of the revenue collected. Also, the Franchise Agreement with Recology which began January 1, 2011 requires fees for supplemental services available (described above) but not included in the base monthly rates.

The base monthly rates do include the following enhancements to solid waste services:

- Weekly pick-up yard waste and recyclables
- Single stream recycling using a blue recycling cart to conveniently recycle glass, aluminum, non-food soiled paper, and plastics numbered 1 - 7 (except black plastic), instead of separating each material into individual containers
- Residential food scrap recycling program using the green yard waste cart for food scrap items such as: meat, cheese, and fruits and vegetables, and food soiled paper products such as: pizza boxes, paper drink cups, plates, and paper napkins

If you would like additional information on the proposed rates, please visit the Finance Department located on the second floor at City Hall, 701 Laurel Street or call 650-330-6644.

If you wish to file a written protest, please send a letter addressed to Solid Waste Rates, City Clerk, City of Menlo Park, 701 Laurel Street, Menlo Park, CA 94025. Your letter must identify the real property you own by street address and the assessor's parcel number. Your letter must be legibly signed by any one of the current property owners. Your name should be set forth as it appears on your tax bill. The City of Menlo Park must receive your letter at City Hall by 5:00 p.m. on December 13, 2011, or it must be presented at the City Council meeting on December 13, 2011, prior to the close of the public hearing on the matter.

Any person interested, including all solid waste / recycling collection customers of the City of Menlo Park, may appear at the public hearing and be heard on any matter related to the proposed increase in rates.

Dated: November 16, 2011 /s/ MARGARET S. ROBERTS, MMC City Clerk

Published in THE COUNTRY ALMANAC on November 30, 2011 and December 7, 2011

Gary White Garratt III, former Woodside resident, dies at 64

Friends of Mansfield (Gary) White Garratt III, a former 20-year resident of Woodside and a person with many interests, are invited to a memorial service for Mr. Garratt at 6 p.m. Thursday, Dec. 1, at the Hiller Aviation Museum at 601 Skyway Road in San Carlos.

Mr. Garratt died Nov. 21 at his home in San Martin, relatives said. He was 64.

Mr. Garratt grew up in San Mateo and loved to build and take things apart, relatives said. In high school, he found ice hockey and played competitively all his life.

Among his interests: river rafting, creek walking, surfing, skiing from helicopters, parachuting from airplanes, and riding motorcycles on two continents, relatives said.

"He had a laid back but adventurous spirit," relatives said. "Gary made people feel comfortable around him and always had a big smile for everybody."

Mr. Garratt built a Woodside home for his wife and two boys and went on to build and fly airplanes, relatives said. His San Martin home included a shop suitable for airplane construction.

Mr. Garratt received a bachelor's

degree in economics in 1970 from the University of Denver, relatives said. He stayed in Colorado, built homes and became noteworthy as a high-yield wheat farmer.

He moved to the Bay Area in 1978 to work at Garratt-Callahan Corp., a water treatment equipment supplier started by his grandfather and based in Burlingame with offices around the country. Mr. Garratt was chief financial officer and a member of the company's board, relatives said.

As an entrepreneur, Mr. Garratt founded three power plants run on hydroelectricity and/or methane, relatives said.

Mr. Garratt is survived by his mother Phyllis, his brothers Peter and Robert; his daughter Jenny; his son Tyler; grandchildren; and "special friend" Mary Ellen Carlin, relatives said.

Go to tinyurl.com/Garratt-193 for more information and to leave remembrances on the Almanac's Lasting Memories website.



Gary Garratt

Friday: High school dance competition

Last year's winning dance team from Woodside High will defend its title in a high school dance competition Friday, Dec. 3, at Carrington Hall, 1202 Brewster Ave. in Redwood City, starting at 8 pm.

The event, called High School Dance Off 2011, raises money for

Companions for the Soul, which provides therapy animals for children, seniors, veterans and families.

Tickets are \$15 and are available at the door or from members of the competing dance teams.

Visit dancingforthestars.us for more information.



CLOUDY TAP WATER?

Menlo Park, CA - Drinking water in Menlo Park and other Peninsula cities may appear cloudy or milky-white in color when drawn from the tap beginning in December 5th. The Hetch Hetchy Reservoir in the Sierra Nevada Mountains, which is the City's regular source of water, will be shut down for maintenance and improvement projects until early January, 2012.

During the shutdown, the City will receive water from the local Alameda County watershed. This water has different characteristics, and is fed into the treatment plant at a higher-than-normal flow rate. The increased flow rate results in the introduction of very small air bubbles that give the water a white and cloudy appearance.

After standing for few minutes, the cloudiness will dissipate as the air bubbles break apart and float to the top. The water meets all the regulatory requirements, and is safe to drink. For more information, contact Dimitri Katsaros at (650) 330-6780.

■ POLICE CALLS

This information is from the Atherton and Menlo Park police departments and the San Mateo County Sheriff's Office. Under the law, people charged with offenses are considered innocent until convicted.

MENLO PARK

Burglary report:

Loss estimated at \$1,150 after entry to apartment through unlocked bathroom window and theft of Apple iPad, camera, cell phone, earrings and computer hard drive, 500 block of University Drive, Nov. 21.

Grand theft reports:

■ Loss estimated at \$1,500 in cash believed stolen from hotel nightstand, Stanford Park Hotel at 100 El Camino Real, Nov. 21.

■ Loss estimated at \$846 in theft of three silver bracelets from unlocked cabinet, Harvest Home Store at 639 Santa Cruz Ave., Nov. 20.

PORTOLA VALLEY

Fraud report: Purchases valued at about \$500 made via unauthorized access to bank card, Sioux Way, Nov. 18.

WEST MENLO PARK

Theft report: Unknown losses in theft of credit card and two gift cards from wallet in unlocked vehicle parked in driveway, Manzanita Way, Nov. 20.

ATHERTON

Child Protective Services report: Menlo-Atherton High School at 555 Middlefield Road, Nov. 18.

Sunday book sale

Books for the whole family will be sold at the Sunday, Dec. 4, book sale in the downstairs meeting room of the main Menlo Park Library, located at 800 Alma St. in the Menlo Park Civic Center. Sponsored by the Friends of the Menlo Park Library, the sale will be held from noon to 4 p.m.

Fiction, mystery, literature, biography, history, religion, art and collectibles, and children's and young reader's titles will be included, as well as hundreds of holiday titles.

You can also buy books by dropping by the Friends Bookstore located inside the library and open during library hours. It is restocked daily.

Proceeds benefit the main library and the Belle Haven Library.



TOWN OF PORTOLA VALLEY

**NOTICE OF A PUBLIC HEARING ON PROPOSED
CONDITIONAL USE PERMIT (CUP) X7D-169
555 PORTOLA ROAD (APN: 076-340-110)
AND
PROPOSED MITIGATED NEGATIVE DECLARATION**

NOTICE IS HEREBY GIVEN that the Planning Commission of the Town of Portola Valley will hold a public hearing on December 7, 2011 to consider a project proposed by Spring Ridge LLC Dr. Kirk Neely and Ms. Holly Myers) requesting a CUP to permit additional floor area and impervious surface area to be placed on the subject 229-acre parcel. The proposal would permit a maximum of 23,380 sf of floor area and 63,605 sf of impervious surface area. Without the requested CUP, floor area could not exceed 10,121 sf and impervious surface area would be limited to 21,807 sf. Section 18.48.010, Table 1, of the Portola Valley Zoning ordinance sets these limits for parcels of 10 acres or larger, but permits larger floor and impervious surface areas subject to the granting of a CUP by the planning commission in accordance with the CUP provisions of the zoning ordinance. The proposal includes a new 2,400 sf agricultural building within the Meadow Preserve area identified on the town's general plan and approximately 7 acres of managed vegetable and fruit crops in the Meadow Preserve area. The property currently contains 9,595 sf of floor area and 38,380 sf of impervious surface area.

NOTICE IS HEREBY GIVEN that the December 7, 2011 public hearing will be continued to the January 18, 2011 Planning Commission meeting to permit time for circulation of the proposed Mitigated Negative Declaration for the project. All reports, plans and documents associated with this project, including the proposed Mitigated Negative Declaration, will be available for review in the Portola Valley Planning Department at 765 Portola Road, Portola Valley, California on December 2, 2011.

NOTICE IS HEREBY GIVEN that the proposed Mitigated Negative Declaration regarding the above described project will be available for public review from December 2, 2011 to January 6, 2012. The Planning Commission of the Town of Portola Valley will initiate consideration of the proposed Mitigated Negative Declaration and the CUP project at its meeting on December 7, 2011 at 7:30 p.m., Town Hall (Historic Schoolhouse), 765 Portola Road, Portola Valley, California. This consideration will be continued to the January 18, 2012, planning commission meeting, also starting at 7:30 p.m., to allow time for conclusion of the Mitigated Negative Declaration circulation period and response to comments that may be received from the circulation process. Before the Planning Commission acts on the proposed Mitigated Negative Declaration or the project, Commissioners will consider all evidence, written and oral, pertaining to the proposed Mitigated Negative Declaration, and project. All interested persons are invited to appear before the Planning Commission at the times and place herein above-mentioned.

Dated: November 21, 2011
Signed: Leslie Lambert, Town Planning Manager

**TOWN OF WOODSIDE
2955 WOODSIDE ROAD
WOODSIDE, CA 94062**

**PLANNING COMMISSION
December 7, 2011
7:30 PM**

PUBLIC HEARING

1. Jeff Tangney and Claudia Schweikert SDS2010-0003
246 Mountain Home Road Planner: Sage Schaan

Review and approval, conditional approval, or denial of a proposal to demolish an existing single-family residence and construct a new two-story single family residence including an attached Accessory Living Quarter (ALQ), a detached ALQ, new entry gate, and reconstruct an existing swimming pool; and site grading and landscaping.

All application materials are available for public review at the Woodside Planning and Building Counter, Woodside Town Hall, weekdays from 8:00 – 10:00 AM and 1:00 – 3:00 PM, or by appointment. For more information, contact the Woodside Planning and Building Department at (650) 851-6790.

**EXCEPTIONAL
RUMMAGE SALE
FURNITURE & BOUTIQUE ITEMS
WOODSIDE VILLAGE CHURCH**

Dec 2, Friday 9 a.m. - 4 p.m.
NO EARLY BIRDS

Dec 3, Saturday 9 a.m. - noon
NO EARLY BIRDS

Guild Hall
3154 Woodside Road
Woodside
650.851.1587
RAIN OR SHINE



**NOTICE OF PUBLIC HEARING
CITY OF MENLO PARK
CITY COUNCIL**

NOTICE IS HEREBY GIVEN that the City Council of the City of Menlo Park, California, is scheduled to review the following item:

Conditional Development Permit Amendment/Sharon Land Company, LLC/3000 Sand Hill Road: Request to modify an existing conditional development permit (CDP) for the restaurant located at 3000 Sand Hill Road to: 1) allow breakfast, lunch and dinner service for the general public, Monday through Friday and for brunch service on weekends, 2) to allow special events (dinners, board meetings, holiday events, etc.) during weeknights and weekends for tenants of the complex and residents of Sand Hill Circle, and 3) for an on-sale beer and wine license to be able to serve beer and wine at the restaurant. The property is located at 3000 Sand Hill Road in the C-1-C(X) - Administrative, Professional and Research, Restrictive, Conditional zoning district.

NOTICE IS HEREBY FURTHER GIVEN that said City Council will hold a public hearing on these items in the Council Chambers of the City of Menlo Park, located at 701 Laurel Street, Menlo Park, on **Tuesday, December 13, 2011 at 7:00 p.m.** or as near as possible thereafter, at which time and place interested persons may appear and be heard thereon. If you challenge these items in court, you may be limited to raising only those issues you or someone else raised at the public hearing described in this notice, or in written correspondence delivered to the City of Menlo Park at, or prior to, the public hearing.

The project file may be viewed by the public on weekdays between the hours of 7:30 a.m. and 5:30 p.m. Monday through Thursday and 8:00 a.m. to 5:00 p.m. on Friday, with alternate Fridays closed, at the Department of Community Development, 701 Laurel Street, Menlo Park. Please call Deanna Chow, Senior Planner, at 650-330-6733 or email her at dmchow@menlopark.org if you have any questions or comments.

Si usted necesita más información sobre este proyecto, por favor llame al 650-330-6702, y pregunte por un asistente que hable español.

DATED: November 22, 2011 Margaret Roberts
City Clerk

PUBLISHED: November 30, 2011

Visit our Web site for public hearing, agenda, and staff report information: <http://www.ci.menlo-park.ca.us>

**PUBLIC MEETING NOTICE AND
NOTICE OF PREPARATION
OF A DRAFT ENVIRONMENTAL IMPACT REPORT
FOR THE PROPOSED ATHERTON LIBRARY BUILDING PROJECT**

TO: Town Residents, Responsible Agencies, Trustee Agencies and Other Interested Public Agencies

FROM: Town of Atherton
Planning Department
91 Ashfield Road
Atherton, CA 94027
Email: lcostasanders@ci.atherton.ca.us

SUBJECT: Notice of Preparation of a Draft Environmental Impact Report

The Town of Atherton (Town) will be the lead agency and will prepare an Environmental Impact Report (EIR) for the Atherton Library Building Project, pursuant to the California Environmental Quality Act (CEQA). The purpose of an EIR is to inform decision-makers and the general public of the environmental effects of a proposed project. The EIR process is intended to provide public agencies and the public with the information required to understand the potential environmental impacts of a proposed project and to reduce the significant environmental effects of that project, to the degree possible.

The Town is requesting comments on the proposed scope and content of the EIR for the Atherton Library Building Project. This notice is being sent to Responsible Agencies (agencies that have or may have a role in approving or carrying out a project), Trustee Agencies (agencies with jurisdiction over natural resources), and other interested parties. The project description, location, and list of the environmental issues that will be addressed in the EIR are attached to this notice.

Due to the time limits mandated by State law, your response must be sent at the earliest possible date, but must be received no later than 5:00 p.m. on **December 28, 2011**. Please send your response to Lisa Costa Sanders, Deputy Town Planner at the address shown above. If you submit comments on the scope of the EIR, you will automatically be added to the Town's distribution list for future notices and information about the environmental review process for the Atherton Library Building Project. If you do not wish to submit comments on the scope of the EIR but would like to be added to the Town's mailing list, please send your contact information, including email address, to Lisa Costa Sanders, Deputy Town Planner at the address shown above.

**The Town will be hosting an EIR scoping session on
Thursday, December 8, 2011 at 6:00 p.m. at the
Atherton City Council Chambers (94 Ashfield Road).**

Project Title: Atherton Library Building Project
Project Sponsor: Town of Atherton
Date: November 28, 2011
Signature:

Name: Lisa Costa Sanders, Deputy Town Planner, lcostasanders@ci.atherton.ca.us

Project Location: The proposed project site is located within Holbrook-Palmer Park (Park), at 150 Watkins Avenue in the Town of Atherton, San Mateo County. The proposed project would be sited within the general building area of the existing Main House, which is centrally located within the interior of the Park. The site is designated "Parks and Open Space" on the Town of Atherton General Plan Land Use and Circulation Plan Diagram and as "Main House and Event Garden" on the Park Master Plan Parks Spaces Diagram. The site is zoned POS (Parks and Open Space) District.

Project Description: The proposed project would result in demolition of the existing Main House within the Park. A new single-story, up to 13,000 square foot library would be constructed generally within the Main House footprint. Some of the existing uses (e.g., meetings, classes, events) currently accommodated at the Main House may be absorbed by other facilities within the Park. The existing library would be repurposed for storage, Town offices or other civic use.

Required project approvals would include a General Plan Amendment, Zoning Amendment, and Park Master Plan Amendment.

Potential Environmental Effects: Based on a preliminary environmental analysis of the project and discussions with Town staff, the following topics will be evaluated in detail in the EIR:

- Land Use and Planning
- Visual/Aesthetics
- Historic Resources
- Transportation, Circulation and Parking
- Parks and Recreation

The following topics are likely to be associated with less-than-significant impacts and are expected to be evaluated and addressed in a detailed Initial Study, which will be circulated with the EIR: agriculture and forestry resources; air quality; geology, seismicity and soils; greenhouse gas emissions; hazards and hazardous materials; hydrology and water quality; mineral resources; noise; population and housing; public services (fire, police, and schools); and utilities and infrastructure.

Alternatives: The *CEQA Guidelines* require the analysis of a range of reasonable alternatives to the project, or to the location of the project that would feasibly attain most of the project's basic objectives and avoid or substantially lessen any of the significant effects of the project. As required by CEQA, the EIR will evaluate a No Project alternative, which will assume the continuation of existing uses at the current library site and existing uses on the Park site, with no redevelopment. Other alternatives which may be considered in the EIR include:

- A reduced size Library Building at the Holbrook – Palmer Park site.
- Holbrook-Palmer Park Parking Lot Site Alternative;
- Existing Library Site Alternative;
- Town Center Site Alternative (i.e. a location different from the existing library site, but somewhere within the Town Center property);

Planning new school facilities

By Barbara Wood

Special to the Almanac

A plan for making repairs to roofs and eroding creek banks and improving campus facilities will be presented to the board of the Woodside Elementary School District at its Tuesday, Dec. 5, meeting, at 3:30 pm in the Wildcats Room.

Woodside superintendent Beth Polito said as part of the new facilities master plan the board will receive a list of projects that the school needs to undertake, including items that must be done, such as re-roofing and creek bank repairs as well as items that can be put off such as solar or other energy improvements, security, telecommunications, and site improvements (mechanical, electrical and structural).

The facilities master plan will be brought back to the board at its Jan. 17 meeting for final approval. Once the plan is adopted, the district will look at ways to pay for the needed repairs and improvements, Ms. Polito said.

"Regardless of how we pay for it, we know we need to do these things," she said. "If we wait too long and don't do maintenance then it's going to be a bigger problem down the road."

Also on the agenda at the Dec. 5 meeting are:

- Introduction of new board members Kevin Johnson and Rudy Driscoll, and the board's selection of a new board president, vice president, and clerk for the coming year.

- A report on transitional kindergarten.

- Committee assignments for board members.

- Beginning discussions on a new strategic plan for the school with a report on proposals by consultants who will help with the plan.

The transitional kindergarten program is one mandated by a state law that is changing the age at which children can begin kindergarten. Over a three-year-period, the cut-off date will change from turning 5 by Dec. 2 to turning 5 by Sept. 1.

Each school must offer a transitional kindergarten year for students who turn 5 between Sept. 1 and Dec. 2. Ms. Polito said the program will also be available to students whose parents believe they would benefit from an extra year of kindergarten. The program will start at Woodside next fall. ■

Editor & Publisher

Tom Gibboney

Editorial

Managing Editor Richard Hine

News Editor Renee Batti

Lifestyles Editor Jane Knoerle

Staff Writers

Dave Boyce, Sandy Brundage

Senior Correspondents

Marion Softky, Marjorie Mader

Contributors Barbara Wood,

Kate Daly, Katie Blankenberg

Special Sections Editors

Carol Blitzer, Sue Dremann

Photographer Michelle Le

Design & Production

Design Director Raul Perez

Designers Linda Atilano,

Gary Vennarucci

Advertising

Vice President Sales and Marketing

Tom Zahiralis

Display Advertising Sales

Adam Carter

Real Estate Manager Neal Fine

Real Estate and Advertising Coordinator Diane Martin

Published every Wednesday at
3525 Alameda De Las Pulgas,
Menlo Park, Ca 94025

Newsroom: (650) 223-6525

Newsroom Fax: (650) 223-7525

Advertising: (650) 854-2626

Advertising Fax: (650) 854-3650

Email news and photos with captions to:

Editor@AlmanacNews.com

Email letters to:

letters@AlmanacNews.com

The Almanac, established in September, 1965, is delivered each week to residents of Menlo Park, Atherton, Portola Valley and Woodside and adjacent unincorporated areas of southern San Mateo County. The Almanac is qualified by decree of the Superior Court of San Mateo County to publish public notices of a governmental and legal nature, as stated in Decree No. 147530, issued November 30, 1969.

Subscriptions are \$60 for one year and \$100 for two years.



WHAT'S YOUR VIEW?

All views must include a home address and contact phone number. Published letters will also appear on the web site, www.TheAlmanacOnline.com, and occasionally on the Town Square forum.

TOWN SQUARE FORUM

Post your views on the Town Square forum at www.TheAlmanacOnline.com

EMAIL your views to:

letters@almanacnews.com and note this it is a letter to the editor in the subject line.

MAIL or deliver to:

Editor at the Almanac,
3525 Alameda de las Pulgas,
Menlo Park, CA 94025.

CALL the Viewpoint desk at 223-6507.

Flood Park a golden opportunity

We hope parents whose children spend most weekends on a Menlo Park athletic field will do everything they can, including offering financial help, to convince the City Council to take over Flood Park, which the county is giving away. The council will consider the issue Dec. 13.

The possibility of the city taking over the park came up earlier this year when county supervisors decided that the park's annual \$200,000 maintenance cost didn't fit in the

EDITORIAL
The opinion of The Almanac

budget, prompting them to offer the park to the city. The city's next step was to get a recommendation from the Parks and Recreation

Commission, which recently studied the pros and cons. The five commissioners present at the Nov. 16 meeting unanimously voted to move forward despite a staff report questioning whether the city needed more open space. The commissioners did add a caveat, however — that the city take over Flood Park only if there's a plan to cover the costs.

We couldn't agree more. The county's loss is Menlo Park's gain in this case, although it will take a concerted effort to line up adequate funding to keep the sports fields and other amenities maintained.

The city's ace in the hole should be the parents of the hundreds of kids who participate in AYSO soccer, Little League and numerous other club sports that depend on steady access to local fields to play and practice. If these organizations step up and share the load, the city will wind up with a huge infusion of field space that should help meet demand for years to come.

The park, conveniently located on Bay Road on the city's east side, comes with a baseball field, softball field and tennis court, along with open space and picnic areas. And

there is space to build two more soccer fields if the city or another entity could come up with the funding to make that dream come true.

In its assessment, the city staff estimated that annual maintenance costs could hit an almost unbelievable \$595,000 a year, nearly triple what the county has allocated in recent years. And staff said it could take up to \$20 million over 10 years to bring the park up to the same standards as others in Menlo Park.

As far as demand for field space, the commission and sports team members attending the meeting took issue with the staff's conclusion that the city might not need more space, based on the results of a 2006 study.

Not so, said longtime park user and member of the Friends of Flood Park Kathy Nicosia, who said that conclusion was partly based on groups not requesting space from the city because they already knew none was available.

"The city approved four new organizations for field usage," she told the Almanac. "They claim there is not a shortage, but there really is a shortage and everybody realizes that. With these new (organizations) coming in, it jumpstarted Parks and Recreation to say we really do need Flood Park."

A way must be found to pay for park maintenance if the fields are to become the city's responsibility. There are plenty of potential backers who might help, including the Friends of Flood Park. Parks and Recreation Commission Chair Kelly Blythe said he would also like to explore public-private partnerships and selling (or leasing) part of the land for recreational uses.

Surely the city can find the funds to take advantage of this singular opportunity to increase its stock of park lands, which can only grow more valuable as the years go by.

LETTERS

Our readers write

Supes asked to roadside herbicide spraying

(The following letter was addressed to the Board of Supervisors)

On behalf of many concerned residents, I am respectfully requesting that the suspension of broadcast herbicide spraying along unincorporated county roads be extended until the Vegetation Management Report and this crucial issue go to the full Board of Supervisors for their vote. Please address this matter at the Dec. 6 Environmental Quality Committee meeting, as the timing of this process and impending roadside spraying are critical.

At the July EQC meeting, many of us were deeply grateful that the Dept. of Public Works was directed to suspend broadcast roadside herbicide spraying until the vegetation management report was completed (due on Nov. 23). As we



Portola Valley Archives

Our Regional Heritage

Hazele Jelich, a member of a Portola Valley pioneer family who passed away on Oct. 17 at age 96, was the gatekeeper at Searsville Lake Recreation Park in the early 1940s. Here she stands at the entrance kiosk and talks to a passenger who is about to enter the park. It is interesting to note the prices of admission, the bobby sox and saddle shoes. Searsville Lake is now a part of Stanford's Jasper Ridge Biological Preserve and open to the public by docent tour.

See **LETTERS**, next page

LETTERS

Continued from previous page

all know, the process of reviewing and voting on this report and issue can be delayed.

The broadcast herbicide spraying along unincorporated county roads is done anytime between January and June.

Last December, we thought the herbicide phase-out proposal would be voted on by Supervisors, then it was postponed and eventually dropped, and the spraying was done by Public Works in spring on unincorporated county roads and

then by Caltrans Nov. 21 on Hwy. 84. Gallons of hazardous chemicals were sprayed along roadsides, into open drainage ditches which flow into local creeks, and put the public's health, water sources, the watershed, and wildlife at risk.

Without your direction to extend the suspension, we will be going through the exasperation of having our health and watershed exposed to herbicide spraying again, possibly in January, without knowing when, where, or what is being sprayed.

Patty Mayall
County resident

Math Tutoring Experts.

Call today for a risk-free assessment and 2 one-hour Mathnasium sessions.

For a limited time, based on availability.

Offer available for grades 2nd-7th

650-321-MATH (6284)



Free Trial Offer!

MATHNASIUM[®]
The Math Learning Center

605 Cambridge Ave.,
Ste. A, Menlo Park

www.mathnasium.com | email: paloalto-menlopark@mathnasium.com

Opal Henney

Opal Henney, a resident of Woodside for almost 50 years, passed away on the 20th of November.

Opal was born February 16, 1921 in Taylor County, Florida and she grew up in Perry, Florida. She attended the University of Virginia, where she earned a Nursing degree and met her husband, James Edward Henney of Nebraska. They married in 1949 and moved throughout the country during Jim's military service. They settled in San Mateo, California, in 1953, moving to Woodside in 1954. In 2002 she sold her Woodside home and moved back to San Mateo, maintaining her independence and living comfortably.

Opal was pre-deceased by her husband Jim, her parents K.B. and Leona Wages, brother Kelly Bruce, and sister Evelyn. She is survived by her sister Ruth, brother Norman, her daughters Patricia Hamann (Les), and Joan Tornai (Robert) and her grandchildren Nick Hamann, Jenna Tornai, and Kathryn Tornai.

Opal was proud of her southern heritage; she chose to attend the University of Virginia because it was as far North as she could go without crossing the Mason Dixon Line! After moving to California she earned her California nursing license by completing refresher courses at Stanford University. She was employed by Kaiser Hospital in Redwood City for 26 years, and was a member of the California Nurses Association.

One of Opal's greatest joys was her grandchildren and being able to participate in their lives. She enjoyed antiques and was an active participant of the Woodside Village Church Rummage Sale, where she was appreciated for her expertise with donated jewelry.

A memorial service will be held at Skylawn Memorial Park on December 2nd at 11 AM. Donations can be made to a favorite animal charity as Opal loved her cats and dogs, or a charity of your choice.

PAID OBITUARY

THE WINTER CLASS GUIDE PUBLISHES **DECEMBER 7**

WINTER Class Guide

The Almanac Winter Class Guide is coming

The Almanac's quarterly class guide is a well respected and useful reference to educational opportunities in our area.

Don't miss this great opportunity to tell the community about your...

- School
- Classes (dance, fitness, academic)
- Seminars
- Tutoring services
- Educational services

In addition to your paid advertisement, descriptive listings of your classes can be submitted for inclusion in Class Guide.

Deadline is November 30

To reserve space or for more information, please call your advertising representative or Irene Schwartz, 650.223.6580.

The **Almanac**

LET YOUR
holiday sparkle

YOUR GIFT SOLUTION

Hillsdale Shopping Center gift Cards from AMEX
\$1.00 fee per card and fee FREE after a purchase of
10 cards. Now thru December 24th.

YOUR SHOPPING CHOICES

- H&M • DSW Designer Shoe Warehouse
- White House | Black Market • Forever 21 Mega Store
- The Cheesecake Factory AND 120 MORE.



Extended holiday, shopping hours,
photos with Santa, gift wrap service
and plenty of free parking!

For more info, visit www.hillsdale.com

HILLSDALE
SHOPPING CENTER

Nordstrom, Macy's and Sears plus 120 fine stores. Off Hwy. 101 at Hillsdale Blvd.
in San Mateo. Call for extended holiday hours. 650.345.8222. www.hillsdale.com.

PREMIER PROPERTIES

represented by **Scott Dancer**



Woodside
OFFERED AT \$5,995,000



Woodside
OFFERED AT \$11,990,000



Woodside, 17.6-acre lot
OFFERED AT \$1,395,000



Woodside
OFFERED AT \$2,699,000



Woodside
OFFERED AT \$2,250,000



Woodside
OFFERED AT \$3,095,000



Woodside
OFFERED AT \$975,000



Woodside
OFFERED AT \$2,175,000



Portola Valley Masterpiece
OFFERED AT \$6,395,000



Woodside Schools
OFFERED AT \$1,649,000



Skywood Acres, Views, 9+ acres
OFFERED AT \$1,995,000



Woodside, 7-acre knoll top
OFFERED AT \$1,395,000

Scott Dancer

650.888.8199

www.scottdancer.com

DRE# 00868362

2969 Woodside Road
Woodside, CA 94062

