



Two Sacred Heart Prep students stage international film festival | Page 3

The Almanac

THE HOMETOWN NEWSPAPER FOR MENLO PARK, ATHERTON, PORTOLA VALLEY AND

APRIL 9, 2014 | VOL. 49 NO. 31



WWW.THEALMANAC.COM



Beekeeping is booming on the Peninsula SECTION 2

BUSY BEES



EXPLORE THE NEW

apr.com

Where people, homes and a bit of imagination intersect



ALAIN PINEL
REALTORS



LA HONDA

Situated just 14 miles from Sandhill Road at Hwy 280, this custom estate is a hidden gem. With all-encompassing views to the Pacific ocean, this 7200 square foot main home features a 5 car garage, and a 1470 guest home, all on over 18 acres. The living area, outdoor kitchen and cabana surround the sparkling pool and lush tropical gardens.

\$4,448,000



LOS ALTOS

Beautiful home with five bedrooms, four and one-half new bathrooms is situated on a 13,400+sf lot. Chef's kitchen has recently been upgraded. Skylights throughout the house provide plenty of light to enjoy the high cathedral ceilings. Landscaping has been recently upgraded. Great schools.

\$3,199,000



ATHERTON

Old World warmth and charm in this 3bd+/2ba Carmel-style home on great lot. Cozy courtyard, artist's studio/office. Impeccably maintained home. English garden with spacious brick patio in the yard.

\$1,795,000

MENLO PARK | 1550 El Camino Real, Suite 100 650.462.1111

WOODSIDE | 2930 Woodside Road 650.529.1111

APR COUNTIES | Santa Clara | San Mateo | San Francisco | Marin | Sonoma | Alameda | Contra Costa | Monterey | Santa Cruz

Making connections through film

SHP students launch high school film festival

By Rye Druzin

Special to the Almanac

When many people think about Sacred Heart Prep, the small school's sports teams are one of the first things to pop into their mind. At a school where 75 percent of students participate in athletic programs, arts and film have drawn less attention. But a newly launched enterprise led by two students may raise visibility of the arts on the Atherton campus to a new level.

Juniors Brenten Brandenburg of Woodside and Justin McWilliams of Hillsborough have organized the school's first annual International Film Festival, which will debut on Thursday, April 10. Tapping into Sacred Heart's network of 154 schools in 45 countries, the two boys wanted to see what movies their cohorts from the rest of the country and around the world could make.

"As the films came in from other countries, we were able to see the differences along with the similarities," Brenten said. "We started feeling connections with these people we had never met before, and we were able to see not only why they put things into their films but how these films illustrated parts of their lives."

The two friends have each been making films since middle school, and have made the Spirit Week video for their grade every year since they started at Sacred Heart. Their latest project began after they attended film summer camps in 2013.

"We came up with the idea because we had seen a lot of film festivals online for adults," Justin said. "We had been into film for a while, so we had been talking about getting into the adult festivals, but they're pretty competitive. So we started researching high school film festivals, and we realized that there weren't many in the area."

The two were given support from Sacred Heart's administration, and over the following few months set about contacting



SHP juniors Brenten Brandenburg, left, and Justin McWilliams have been making films since middle school.



the school's various art departments. The boys also contacted local schools from Menlo Park down to San Jose to urge their students to contribute.

"It's been a pretty long process, especially with junior year and all the homework," Justin said. "But the most time-consuming thing was finding the right email addresses and getting in contact with them."

Brenten and Justin ended up with 45 films to choose from,

'As the films came in from other countries, we were able to see the differences along with the similarities.'

BRENTEN BRANDENBURG

taking the best 12 from the group. They broke them down into three categories: documentary, social justice, and narrative film. Brenten, who commented that he enjoyed the narrative films the most, said that he was able to "see the fiction side and what the kids were able to think up versus what we would think up. That's when the creativity really gets to the highest level."

But it was a documentary that left the biggest impression on both students. Set in Connecticut, the short followed an adopted man, filmed by his daughter, as he sought out his birth mother. The film shows the man, with his family in tow, finally meeting his biological mother after 40 years of separation.

"I think that was touching and demonstrated that you don't have to be in Connecticut to feel that connection," Brenten said

of the movie.

While the films on their own can be moving or tell compelling stories, the festival itself is seen as a way to bring the students closer together.

"We have a strong national and international Sacred Heart community, and the film festival is the perfect way for students to connect in a creative and supportive way," said Peggy O'Leary, the fine arts department chair at Sacred Heart.

Ms. O'Leary, along with exchange coordinator Deborah Farrington-Padilla and SHP film making instructor Patrick Neary, served as the faculty contacts who helped the students get in touch with Sacred Heart schools nationally and abroad. But Ms. O'Leary said that it was the two students who did the lion's share of the work, and that the faculty's involvement was minimal.

"This film festival is entirely student initiated. Both students involved ... have a lot of passion for film," Ms. O'Leary said. "What I admire about their idea is that they knew they were creating something that would be long-lasting."

Justin said that one of the comments he heard from other schools in the area was, "Gosh, why didn't we think of that?" Both boys believe that the festival will leave a lasting impression on the school.

"I felt that after we graduate, the festival will be a great thing for Sacred Heart to continue to have, and so I feel that it was definitely worth pushing through that little extra work after school just to create something new that students didn't

See **FILM FEST**, page 11

BROADWAY BY THE BAY
PRESENTS
EVITA
MARCH 28 - APRIL 13
AT THE FOX THEATRE IN DOWNTOWN REDWOOD CITY
FOR TICKETS
650.FOX.7770
BROADWAYBYTHEBAY.ORG

PARENTS AND KIDS THINK THEY'RE "SICK".

Meet our two very popular pediatricians, Dr. Sky Pittson and Dr. Sarah Cueva. Parents like that they can talk to them directly instead of going through a nurse. And kids like them enough to stop by on their bikes just to say "hi".

We think that's pretty "sick", or as some say, "cool".

If that appeals to you, we invite you to do what the kids do, stop by and say "hi".

**Old-fashioned values.
Modern medicine.**



650.851.4747 • WWW.VILLAGEDOCTOR.COM

April 9, 2014 ■ TheAlmanacOnline.com ■ The Almanac ■ 3

CALLING ON THE ALMANAC

Newsroom: **223-6525**
Newsroom fax: **223-7525**
Advertising: **854-2626**
Advertising fax: **223-7570**
Classified ads: **854-0858**

- E-mail news, information, obituaries and photos (with captions) to: editor@AlmanacNews.com
- E-mail letters to the editor to: letters@AlmanacNews.com

To request free delivery, or stop delivery, of The Almanac in zip code 94025, 94027, 94028 and the Woodside portion of 94062, call **854-2626**.

THE ALMANAC (ISSN 1097-3095 and USPS 459370) is published every Wednesday by Embarcadero Media, 3525 Alameda de las Pulgas, Menlo Park, CA 94025-6558. Periodicals Postage Paid at Menlo Park, CA and at additional mailing offices. Adjudicated a newspaper of general circulation for San Mateo County, The Almanac is delivered free to homes in Menlo Park, Atherton, Portola Valley and Woodside. Subscriptions for \$60 per year or \$100 per 2 years are welcome. POSTMASTER: Send address changes to the Almanac, 3525 Alameda de las Pulgas, Menlo Park, CA 94025-6558. Copyright ©2012 by Embarcadero Media, All rights reserved. Reproduction without permission is strictly prohibited.

WE BRING
THE WORLD TO YOU

WOODSIDE | \$10,320,000 | WEB ID: GCIO



AN EXCLUSIVE GLOBAL NETWORK

- Attracting millions of high net-worth buyers around the globe
- Reaching 47 million affluent consumers each year
- Marketing over \$44 billion of global luxury property in 40+ countries

VISIT APR.LUXURYPORTFOLIO.COM | 650.462.1111

Local News

MENLO PARK | AHERTON | WOODSIDE | PORTOLA VALLEY

Defamation suit brought by fire board director settled

Lawsuit brought against fire board director by John Woodell still scheduled for trial

By **Sandy Brundage**

Almanac Staff Writer

Six days before the trial in one defamation case was set to begin, a second defamation lawsuit spawned by the same incident was settled, according to a San Mateo County Superior Court filing.

John Woodell, husband of Menlo Park Councilwoman Kirsten Keith, agreed to pay \$5,000.01 to Menlo Park Fire Protection District board member Virginia Chang Kiraly in exchange for the dismissal of her

lawsuit against him, a document filed with the court on April 1 revealed.

The lawsuit filed by Mr. Woodell against Ms. Kiraly and Menlo Park resident Chuck Bernstein, who was elected to the fire board after the complaint was made, remains active. That trial was scheduled to start Monday, April 7, but hit a last-minute speed bump in the form of a motion for continuance filed under seal the same morning on behalf of Mr. Woodell.

The public portion of the court record indicates that the plain-

tiff said he was not ready for trial and wanted to reopen discovery. The defendants opposed the request for a delay. The judge's decision was not issued before the Almanac's press time. Check AlmanacNews.com for an update on the judge's ruling.

Although the settlement agreement was stamped "Confidential" and a court protective order prohibiting the disclosure of some types of information in the lawsuit has been in place since late last year, the agreement ended up accessible to the public via the

court's online database.

California's civil procedures code for this type of offer, known as a "998", requires that it be filed with the court, which typically makes the documents available to view. Judges have even ruled in some cases that including a confidentiality clause in a 998 offer invalidates the agreement — but it's unclear whether that applies here, given the protective order.

Attorneys for both parties were unable to shed any light on the matter.

"I'm sorry, I would like to

comment, but I cannot. I cannot discuss confidential documents even if those confidential documents are improperly filed in open court," said attorney Seth Rosenberg, who represents Mr. Woodell. He added that nothing changes the confidentiality of a document pursuant to a court order other than following the appropriate procedures.

Harmeet Dhillon, representing Ms. Kiraly, likewise said she was not able to comment.

Mr. Woodell filed his com-

See **SUIT**, page 6

Council requests more data before voting on animal shelter funding

By **Sandy Brundage**

Almanac Staff Writer

Animal control services are important — no one on the Menlo Park council disputes that — but what they are disputing is who should provide them to the city and at what cost.

San Mateo County would like to replace the 60-year-old animal-holding facility on Airport Boulevard in San Mateo with a new, smaller one estimated to cost between \$15.1 million to \$20.2 million. The county contracts with the Peninsula Humane Society for facility operations, and in turn 20 Peninsula cities, including Menlo Park, contract for services.

The county is asking the cities and towns that use the services to agree to contribute towards the cost of the new facility. The agreement would be structured in the form of a lease, with interest-free payments adjusted each year and calculated based on the average frequency of shelter use and the population of each participating jurisdiction.

Woodside, Portola Valley and Atherton have already signed on, with annual contributions in the range of \$3,000 to \$13,111.

Menlo Park has been tapped to pay \$23,728 to \$31,769 annually for up to 30 years. That would be in addition to the \$260,029 already set aside in the city's budget for animal

■ MENLO PARK

control services.

But during its April 1 meeting, the Menlo Park council decided it needed more information before voting on the agreement.

Vice Mayor Catherine Carlton said she was "deeply unhappy" that data requested prior to the meeting was slow to materialize, using a report dated 2009 that had been delivered to the council the morning of the April 1 meeting as an example.

She asked whether Menlo Park, which may use the facility less frequently than some other jurisdictions, was paying more than smaller municipalities that use it more often. And would the \$50,000 annual maintenance fee shared by participating jurisdictions for the current facility continue once the new shelter was built?

Those were not the only questions raised during the evening's discussion. "Why not look at Santa Clara (to provide services instead)?" Councilwoman Kirsten Keith asked, with Ms. Carlton expressing agreement. Part of the appeal is that Santa Clara County has facilities much closer to Menlo Park.

The Peninsula Humane Society, according to the staff report, is reluctant to renew its San Mateo County service

See **SHELTER FUNDING**, page 6



Michelle Le/The Almanac

Carburetors and carbohydrates

Doug Werner drives away in a replica Porsche 550 during the debut of "Cars and Croissants" on April 5. Downtown Menlo Park may seem like an odd location for an exotic car show, given the city's predilection for "green" modes of transportation, but perhaps the offer of baked goods will continue to draw residents to the free monthly event, sponsored by 100 Oct, the city of Menlo Park and the Chamber of Commerce.

Charges being weighed in weekend weapons incident at Woodside School

By **Dave Boyce**

Almanac Staff Writer

Probation department authorities in San Mateo County are weighing whether to charge two teens with a misdemeanor for having allegedly carried weapons, in this case two air rifles and a Woodsman's Pal machete, to the outskirts of Woodside Elemen-

tary School during a soccer game on Saturday afternoon, April 5, according to deputies from the Sheriff's Office.

Responding to a report about two armed teens wearing camouflage clothing, deputies locked down the campus at 3195 Woodside Road at about 2:30 p.m. and evacuated about 100 people, including students and parents, deputies said.

After "swiftly" locating the two teenagers outside a fence at the school, deputies interviewed them and turned them and their weapons over to their parents, Deputy Rebecca Rosenblatt said.

The Sheriff's Office would not identify the suspects beyond saying that they are 16

See **WEAPONS**, page 6

PORTOLA VALLEY
4420 Alpine Rd., Portola Valley
phone 650.851.1711

WOODSIDE
3015 Woodside Rd., Woodside
phone 650.851.1511

Fresh Produce



Fresh Organic Spring Mix	\$2.99 lb.
Crimson Red Seedless Grapes	\$2.99 lb.
California Broccoli Crowns	99¢ lb.

Meat and Seafood



London Broil	\$5.98 lb.
Chicken Drumettes	\$4.98 lb.
Hanger Steak	\$10.98 lb.

On Sale Grocery



Bumble Bee Albacore Tuna 5 oz.	\$1.69
Hidden Valley Ranch Dressing 16 oz.	\$3.49
Kellogg's Frosted Mini Wheats 18 oz.	\$2.99
Lu Petit Ecolier Biscuits 5 oz.	\$2.69
Jarlsberg Sliced Cheese 8 oz.	\$4.29

Deli Department



Columbus Uncured Italian Dry Salami 8 oz. - All Natural	\$8.49 ea.
Creminelli Sopressata 7 oz. - Classic Garlic Uncured Salami	\$11.99 ea.
Columbus Secchi Salami Authentic Italian Recipe, Slow Aged	\$4.99 ea.

Wine and Spirits

Olema

Olema is produced by Amici Cellars, in Calistoga. Their goal is to deliver a premium wine experience at "everyday" prices. These wine over-deliver. The Pinot Noir is a brand new edition to the line-up and is the gem of the group.



'12 Olema Chardonnay, Sonoma County	Reg. \$14.99 Sale \$12.99 <i>Flavors of apple, citrus and toasty oak lead to a satisfying finish.</i>
'12 Olema Pinot Noir, Sonoma County	Reg. \$19.99 Sale \$16.99 <i>Flavors of cherry pie, spice and cocoa culminate in a rich finish.</i>
'11 Olema Cabernet Sauvignon, Sonoma County	Reg. \$19.99 Sale \$16.99 <i>Displays aromas of currants, cedar and espresso, with black fruits, toffee and mocha flavors.</i> (Woodside location only)

SUIT

continued from page 5

plaint in 2012, alleging the defendants told the media, police and others that he had vandalized Ms. Kiraly's campaign signs during the 2011 fire board election, after Mr. Bernstein discovered an uprooted Kiraly-campaign sign in his yard lying next to a cellphone that turned out to be Mr. Woodell's. Mr. Woodell has denied vandalizing the sign.

Ms. Kiraly filed her own lawsuit against Mr. Woodell late last year, based on an email sent by Mr. Woodell to a former Menlo Park council member that suggested the fire board director had somehow gotten hold of his

phone. She stated in her court filings that she has never had Mr. Woodell's cellphone.

According to Mr. Woodell's attorney, the evidence shows that Ms. Kiraly and Mr. Bernstein set out to create a scandal. In an email dated Oct. 17, 2011, Mr. Bernstein informed Ms. Kiraly that he had found what appeared to be Mr. Woodell's cellphone. He asked whether she would like a scandal that would make the front page, or whether she would rather forget the whole thing.

Based on court documents, Ms. Kiraly replied by email that he should go to the police, said she didn't want to forget the matter, and wondered whether to call the Daily Post. ■

SHELTER FUNDING

continued from page 5

contract, which expires in 2015, unless a plan is in place to address the shortcomings of the current dilapidated facility. The county's timeline indicates that construction of

the new shelter is expected to start in July, and be completed within 18 months.

In the end the council unanimously agreed to table the discussion until a meeting later this month to allow the county to return with more information. ■

WEAPONS

continued from page 5

and 17 years old and are from Redwood City and Woodside.

Asked whether the rifles were loaded, Ms. Rosenblatt said she did not have that information. Carrying weapons on any campus serving grades K-12 is a violation of Section 626.10 (a) of the state penal code.

The incident was handled as if it had been an "active shooter" situation, Ms. Rosenblatt said. "Obviously, the deputies took that (911) call very seriously," she said. Once the teens had been located, deputies downgraded the threat level, she said.

"There is a likelihood that they may get themselves a violation of the (penal code)," Ms. Rosenblatt said. ■

SUPPORT LOCAL
JOURNALISM

Support The Almanac's
coverage of our
community.

Memberships begin
at only 17¢ per day

Join today:
SupportLocalJournalism.org/Almanac

Council OKs in-house planning services

■ 50 years of planning through Spangle Associates will end in December.

By Dave Boyce
Almanac Staff Writer

■ PORTOLA VALLEY

The end is coming for the longstanding practice in Portola Valley Town Hall of using an outside consulting firm to oversee planning department activities.

Since its founding in 1964, Portola Valley has employed Spangle Associates of Menlo Park, whose officers have included former Portola Valley town planner George Mader, who is still on the board, and the current Town Planner Tom Vlastic, who has announced that he is retiring in December. Karen Kristiansson, who joined the Town Hall staff in July 2013 as deputy town planner, was hired away from Spangle.

The Town Council, at its

March 26 meeting, concurred with a transition plan proposed by Town Manager Nick Pegueros on how to manage planning activities as the town recruits an in-house planning director, a process that could take up to a year.

The candidate will have strong technical planning skills and be “highly analytical, pragmatic, embrace town values, and possess strong communication skills to successfully navigate finely nuanced situations that will confront the Planning Department day after day,” Mr. Pegueros says in a staff report.

Mr. Mader retired in 2010 after 45 years as Portola Valley’s town planner, and Mr. Vlastic

took over; he is now Spangle’s sole planner. Will Spangle continue as a going concern when Mr. Vlastic retires? “I believe we will finish our service to the town at the end of this year then ‘hang up the shingle’ after over 50 years of professional planning services at many levels,” Mr. Vlastic said in an email. “It has been a special run with some of the best clients any firm could wish to have.”

The transition to an in-house operation has been underway since early 2013. Planning Technician Carol Borck was promoted to assistant planner, and the town hired Ms. Kristiansson.

Given the “steep” learning curve that has revealed itself so far in making the transition to

► See **PLANNING**, page 8



NOTICE OF COMMISSION VACANCIES

The City of Menlo Park is now recruiting interested individuals to serve on a variety of commissions that examine issues of community concern and provide guidance to the City Council. Become involved in your community. **Apply today!**

COMMISSION	NUMBER OF VACANCIES
Bicycle Commission	3 Vacancies
Environmental Quality Commission	2 Vacancies
Housing Commission	1 Vacancy
Library Commission	6 Vacancies
Parks and Recreation Commission	2 Vacancies
Planning Commission	2 Vacancies
Transportation Commission	3 Vacancies

TO APPLY: Contact the City Clerk’s Office at 650-330-6620 or email the City Clerk, Pam Aguilar, at PIAguilar@menlopark.org to request an application. You may also visit us online at: http://www.menlopark.org/city_commissions.html.

APPLICATIONS DUE MONDAY, APRIL 14, 2014

REAL ESTATE Q&A

by Monica Corman



How To Compete in Multiple Offers

Dear Monica: Recently I made an offer on a property that received more than ten offers. My agent and I looked at all relevant recent sales data and made an offer that I thought was very competitive, but I was outbid by others. What would you advise me to do to succeed in this very competitive market? Kelly C.

Dear Kelly: I am sorry your offer was not enough to get the property but making offers these days is a complex exercise. Many properties are under-priced to start, and this invites more buyers to make offers, adding to the competition. If properties were more accurately priced, fewer buyers would participate, eliminating some of the frenzy.

You need to know all of the recent sales data for similar properties. This will tell you what the market value should be, but it may not be enough to tell you where the property is actually going to sell. The buyer who is the top bidder ends up paying market value plus a premium. This premium is what the bidder is willing to pay in order to win out over the other bidders. The property may have a particularly strong value to this bidder. You should also be aware that if you do succeed, that the property may not appraise at the sales price, if it is too much higher than recent comparable sales.

Above all, don’t be discouraged. Stay diligent and informed and you should be able to find the right property even in this market.

For answers to any questions you may have on real estate, you may e-mail me at mcorman@apr.com or call 462-1111, Alain Pinel Realtors. I also offer a free market analysis of your property. www.MonicaCorman.com

Inspirations

a guide to the spiritual community



WOODSIDE VILLAGE CHURCH

Sunday Worship 9:30 a.m.

with Sunday School and Nursery Care

Pastor Mike Harvey
Rev. Dorothy Straks

3154 Woodside Road Woodside
650.851.1587
www.wvchurch.org

To include your Church in **Inspirations** Please email Blanca Yoc at byoc@pawekly.com or call 650-223-6596

32nd Annual

MENLO PARK sidewalk fine arts festival

Santa Cruz Avenue
Between El Camino Real and University

APRIL 11-12-13

Fri./Sat. 10 AM - 6 PM
Sun. 10 AM - 5 PM

90 PROFESSIONAL ARTISTS

Presented by



A PACIFIC FINE ARTS FESTIVAL
pacificfinearts.com



MENLO PARK CHAMBER OF COMMERCE

NOTICE TO BIDDERS

NOTICE IS HEREBY GIVEN that the Board of Trustees of the Las Lomas Elementary School District of San Mateo County, California, hereby invites and will receive sealed proposals for the furnishing of all labor and materials for the following work:

Portable Buildings at La Entrada Middle School

Work done shall be in strict accordance with Plans and Specifications prepared by:

Sugimura Finney Architects
2155 S. Bascom Ave. Ste 200
Campbell, CA 95008

Plans and Specifications will be distributed via:

Bidders calling 650-854-6311 Ext. 42 to reserve a document set 48 hours prior to bid walk will be provided documents during the mandatory bid walk

Additional Plans and Specifications may be viewed at:

Las Lomas School District Main Office
1011 Altschul Avenue, Menlo Park, CA 94025
By appointment only / 48 hr. notice or Online via District document portal
Call 650-854-6311 ext 42 for appointment or directions to access online portal

Written bids must be submitted no later than

2:00 PM Tuesday May 06, 2013

at the Las Lomas Elementary School District Main Office.

Mandatory Pre-bid conference has been scheduled for

10:00 AM Thursday April 17, 2013

Attendance is mandatory at pre-bid conference. Attendees must be present for the entire meeting in order to be deemed a qualified bidder.

Meet at The following Site

La Entrada Middle School (Meet at main office)
2200 Sharon Rd, Menlo Park, CA 94025

In accordance with the provisions of California Business and Professions Code Section 7028.15 and Public Contract Code Section 3300, The District requires that the bidder possess the following classification of contractor's license at the time the bid is submitted:

Class B General Contracting

Any bidder not so licensed at the time of the bid opening will be rejected as non-responsive. No bids will be accepted from, or a contract awarded to, any party or firm in arrears to the District or who is a defaulter as surety, contractor, or otherwise.

Each bid must be accompanied by certified check, cashier's check, or bidder's bond in the amount of ten percent (10%) of the tendered bid, made payable to the order of **Las Lomas Elementary School District** as a guarantee that the bidder will, after being notified of acceptance of his/her bid, enter into a contract with the Board in accordance therewith and file the necessary bonds as called for in the Specifications.

Rejection of Bids

The board reserves the right to reject any and all bids. The Board also reserves the right to waive any informality in any bid received.

Selection of Lowest Bid

The successful bidder will be selected **per the lowest base bid**.
Per Public Contract Code Section 20103.8

Prevailing Wage Requirements

This Project is a "public work" to which general prevailing wage rates will apply in accordance with Labor Code Section 1770, et seq. The Prevailing wage rates are available on the DIR website at www.DIR.ca.gov.

The Contractor and all Subcontractors under the Contractor shall pay all workers on all work performed pursuant to this Contract not less than the general prevailing rate of per diem wages and the general prevailing rate for holiday and overtime work as determined by the Director of the Department of Industrial Relations, State of California, for the type of work performed and the locality in which the work is to be performed within the boundaries of the School District.

This project is subject to labor compliance monitoring and enforcement by the Department of Industrial Relations. The successful Bidder shall comply with all requirements of Division 2, Part 7, Chapter 1, of the Labor Code. Contractor shall submit certified payroll monthly via the eCPR system.

Escrow Accounts

Pursuant to Section 22300 of the Public Contract Code, the Agreement will contain provisions permitting the successful bidder to substitute securities for any monies withheld by the District to ensure performance under the agreement or permitting payment of retentions earned directly into an escrow account.

Disabled Veteran's Business Enterprise

In accordance with Education Code Section 17076.11, The Las Lomas Elementary School District has "a participation goal of at least 3% per year of the overall dollar amount expended each year by the school district for Disabled Veteran Business Enterprises." Thus, all contractors bidding on this project are required to make a good faith effort to achieve this 3% participation goal. Requirements for demonstrating that this good faith effort has been made are included in the Project Manual

Search suspended Monday for missing Menlo Park woman

With no new evidence or leads as to the location of a missing Menlo Park woman believed to have been hiking on Mt. Tamalpais, search and rescue crews have suspended a widespread, three-day search for her, a Marin County sheriff's lieutenant said Monday afternoon, April 7.

The area around where 33-year-old Magdalena Glinkowski's car was found has been extensively searched over the last few days, but investigators have turned up no sign of her, sheriff's Lt. Doug Pittman said.

Ms. Glinkowski's car was found abandoned in a parking lot near the Pantoll Campground on Friday, and investigators determined she had not been seen near her home since March 30, Lt. Pittman said.

She had left a message March 30 that she was going for a day hike, he said.

The car found abandoned was a rental. The rental car company told investigators that Ms. Glinkowski continually drives a rental car for months at a time, but she failed to either return or renew the car at the beginning of the month, Lt. Pittman said.

She was spotted in security-camera footage on March 30 walking across the parking lot near where her car was found. A search was launched over the weekend, with more than 80 volunteer searchers and eight search dogs on the ground and the California Highway Patrol and the sheriff's office patrolling by air.

But with no sign of her, search and rescue crews had to suspend the search after meticulously covering a wide area, Lt. Pittman said.

Some members of Ms. Glinkowski's family have flown in from the East Coast, and rescuers plan to go over how and where they conducted the search. "The reality is, it's a needle in a haystack," Lt. Pittman said, though he noted that



California Department of Parks and Recreation

An image from a surveillance camera showing the missing woman walking across the parking lot near where her car was found.

crews have not completely abandoned the hope that she could be found.

"If something were to come up, we're right back out there," he said.

Ms. Glinkowski is described as a white woman with blond hair and blue eyes, about 5 feet 7 inches tall, and about 120 pounds.

In the surveillance video from Mt. Tam, she was seen wearing a pink pullover top with light blue shorts and white-and-black running shoes with green soles.

According to her LinkedIn profile, Ms. Glinkowski is employed as a software developer for the Massachusetts Institute of Technology as well as at Purple Encoding in the Bay Area. She previously worked for Microsoft and Intel.

Anyone with information about her disappearance has been asked to contact the Marin County sheriff's investigations unit at (415) 473-7265 or Bay Area Crime Stoppers at (800) 222-TIPS.

—Bay City News Service

PLANNING

► Continued from page 7

in-house planning, along with property development applications becoming significantly more numerous and complex, contentious neighbor disputes, and more numerous and more complicated code-enforcement cases, the council agreed to Mr. Pegueros' recommendations:

■ That he take over day-to-day management of the planning department.

■ That Ms. Kristiansson

be appointed interim planning director and work closely with Mr. Vlasic in the coming months.

■ That the council allocate \$75,000 through June 30 to potentially hire three consultants: one to take over updating the housing-element chapter of the town's general plan, one to assist with the influx of project applications and help craft policies and procedures for the transition, and possibly another to help with special projects, including finding and hiring a planning director. ■

Environmental report opens door for comment to FAA about aircraft noise

By Dave Boyce
Almanac Staff Writer

For some residents of Portola Valley, Woodside and nearby communities, the current level of commercial aircraft noise in the skies above may lessen as the years go by, but it just as easily may not.

A draft environmental impact report from the Federal Aviation Administration on optimizing airspace and flight procedures in Northern California describes “new” routes into major Bay Area airports. The report was published March 25 and is about halfway through a 30-day comment period. The current routes are not precisely adhered to in practice. The proposed routes are new only to the extent that they are intended to mimic actual routes now in use by pilots.

Nevertheless, publication of the report is an opportunity for residents of Portola Valley and other noise-affected Peninsula communities to speak to the FAA about noise abatement. Whether the FAA will listen and respond is another matter. Safety and efficiency are its highest priorities, Portola Valley Mayor Ann Wengert said. Noise is a consideration but not a top priority, she said.

Ms. Wengert represents Portola Valley at the SFO Airport/Community Roundtable, which meets regularly and includes representatives from the FAA and many Peninsula communities. Woodside is represented by Mayor Dave Burow. The roundtable, according to its mission statement, “attempts to achieve noise mitigation through a cooperative sharing of authority among the aviation industry, the FAA, SFO management and local government.”

“It’s a very interesting dynamic,” Ms. Wengert said. “If you or I were in (the FAA’s shoes), there would be priorities we would want to implement as well. ... They are not required to even respond to comments, but they have said that they likely will (this time).”

“This will be a serious test of how much impact citizen groups can have,” she continued. “If (residents) have comments, this is the time.”

Go to tinyurl.com/FAA-332 to comment and to access the entire FAA report.

Rep. Anna Eshoo, D-Menlo Park, extracted an agreement in 2001 with the FAA that requires arriving aircraft to stay at least 8,000 feet above sea level when passing over a navigation beacon in the Woodside hills.



Source: FAA

‘This will be a serious test of how much impact citizen groups can have. If (residents) have comments, this is the time.’

PORTOLA VALLEY MAYOR
ANN WENGERT

Arriving flights continue to violate that minimum altitude despite another letter from Ms. Eshoo in 2005.

Some 23,000 arriving flights crossed over the Woodside beacon in 2012, according to Portola Valley resident Vic Schachter and unincorporated Woodside resident Jim Lyons. Between May 2005 and February 2010, the average altitude of flights dropped to 6,600 feet from 7,500 feet, while the number of flights rose by 70 percent, they said. Between January 2009 and May 2012, more than 88 percent of flights crossed at altitudes below 8,000 feet, with about 28 percent lower than 6,000 feet.

“There is no firm requirement that airplanes fly at 8,000 feet over the Woodside (beacon),”

FAA spokesman Ian Gregor has told the Almanac. “Northern California controllers have noise abatement Standard Operating Procedures (SOPs) and use them when traffic volume permits. Often, however, traffic volume prevents us from using them. ... While we keep almost all SFO arrivals at 8,000 feet at night, it is not possible to keep all SFO arrivals at that altitude during the day because that would create conflicts with other aircraft using that busy airspace.”

The FAA has some explaining to do, according to Mr. Lyons and Portola Valley resident Tina Nguyen. The two have written to their congressional representatives.

Ladera skies

The draft report describes routes into SFO from the south that, if followed precisely and consistently, would mean a lot of noise for residents of Ladera and Portola Valley. But if the proposed routes are just a more realistic presentation of the routes now in use, the FAA’s proposals would only codify them.

The Almanac obtained a copy

See **AIRCRAFT NOISE**, page 11

Gleim
the Jeweler



Art Deco diamond earrings with Mississippi freshwater pearls

ESTATE SPECIALISTS SINCE 1931

Exceptional pieces from the Victorian, Edwardian, Art Deco & Contemporary periods

Stanford Shopping Center

(650) 325-3533 • gleimjewelers.com

Support Local Business

Shop
MenloPark.com

The online guide
to Menlo Park businesses

- Make purchases
- Write and read reviews
- Find deals and coupons
- Buy gift certificates
- Discover local businesses

Good for **Business**. Good for **You**.
Good for the **Community**.

Visit ShopMenloPark.com today

PENINSULA



Discover the best places to eat this week!

AMERICAN

Armadillo Willy's

941-2922

1031 N. San Antonio Road, Los Altos
www.armadillowillys.com**The Old Pro**

326-1446

541 Ramona Street, Palo Alto
www.oldpropa.com

ITALIAN

Cucina Venti

254-1120

1390 Pear Ave, Mountain View
www.cucinaventi.com

CHINESE

Ming's

856-7700

1700 Embarcadero East, Palo Alto
www.mings.com

CHINESE

New Tung Kee Noodle House

947-8888

520 Showers Drive, Mountain View
www.shopmountainview.com/luunoodlemv

INDIAN

Janta Indian Restaurant

462-5903

369 Lytton Ave.
www.jantaindianrestaurant.com

Read and post reviews,
explore restaurant menus,
get hours and
directions and more at
ShopPaloAlto, ShopMenloPark
and ShopMountainView

powered by



Missing man found after nighttime search

■ Search near Corte Madera School included helicopter patrol.

By Dave Boyce

Almanac Staff Writer

A helicopter from the San Jose Police Department hovered above the southern border of Portola Valley on the evening of April 2 as a team of law enforcement officers from Santa Clara and San Mateo counties looked for a missing person who had been reported absent from his Los Altos Hills home at around 4:30 p.m. that day.

Residents of the area near Alpine Road and Indian Crossing were asked to shelter in place at about 7:30 p.m., the same time that Los Altos police found the man in Los Altos, according to Sgt. Andrea Urena of the Santa Clara County Sheriff's Office.

The missing man, described as 49, Asian and wearing a blue parka with a hood, had reportedly been seen near Corte Madera school, Sgt. Urena

said. The man was taken to a hospital for medical evaluation, she said.

The advisory in Portola Valley was lifted at about 8:05 p.m. Asked to explain the odd timing, San Mateo County Sheriff's Office Deputy Rebecca Rosenblatt replied in an email. The shelter-in-place order was issued at about 7:29 p.m. "in what can be best described as an over abundance of caution," she said. "When the situation was reassessed a short time later, it was determined that a shelter in place order was in fact not necessary and the order was lifted at approximately 8:05 p.m."

Santa Clara County deputies had asked for assistance from San Mateo County deputies. The San Mateo County Sheriff's Office had 10 deputies involved, including those patrolling Portola Valley and Woodside, the street-crime unit, and the coastal unit, Deputy Rebecca Rosenblatt told the Almanac. Deputies arrived on the scene at 6:15 p.m. and left by 8:30, she said. ■

High Quality, Affordable Live-In Care

Having trouble finding compassionate around-the-clock home care that fits your family's needs and budget? Call Home Care Assistance! We have been live-in specialists for Menlo Park, Atherton, Portola Valley and Woodside for 12 years! That's because we offer:

Consistent Dependable Care. We typically assign a primary caregiver 4 days a week and a secondary caregiver who covers the remaining days. (Some agencies alternate up to 4 different caregivers in one day!)

Total Peace of Mind. Rest easy knowing your loved one's needs are attended to at all times. Live-in care ensures optimal safety and is personalized to each client's individual needs.

Professional Oversight. Live-in caregivers are managed by a team of client care managers to make sure our clients' experiences are always positive. You don't just hire a caregiver, you hire our full team of seasoned care professionals.

Reasonable Rates. Home Care Assistance hires and trains only the most qualified caregivers, but our live-in rates are the most competitive in the industry. Call to learn more!

New! Ask about Kosher Kare caregiver training for those that maintain a Kosher Lifestyle!

Call us today to schedule your free assessment!



650-462-6900

148 Hawthorne Avenue, Palo Alto, CA 94301
HomeCareAssistance.com



We still do
24/7 live-in
care!

Our expert founders wrote the book, *Handbook for Live-In Care*, available on Amazon.com!



AIRCRAFT NOISE

continued from page 9

of Mr. Lyons and Ms. Nguyen's letter to Ms. Eshoo and Congresswoman Jackie Speier. In it, they note that they are "deeply concerned" about the proposed new routes "since its two flight path options converge directly over Portola Valley, specifically over the neighborhood of Ladera."

The FAA report concludes that the proposed routes "would not result in a significant noise impact," but Mr. Lyons and Ms. Nguyen say the report's noise data is flawed because it is derived from a computer model, not from actual noise monitors on the ground, and because it does not account for higher-than-average ground levels in the Portola Valley area.

Monitors were used by SFO's Noise Abatement Office in a four-month analysis in 2012 of noise levels in Woodside and Portola Valley. Those levels are significantly lower than the base levels cited in the report. If the report's levels are the accurate ones, the proposed routes would increase noise by between 57 percent and 62 percent, Ms. Nguyen and Mr. Lyons say.

The FAA should have accounted for these discrepancies in their calculations, Mr. Lyons said. "Two completely different answers?" he said. "Something's wrong."

The FAA has said it will have

answers to these questions on April 17, Mr. Lyons told the Almanac. That would leave the community seven days to comment.

The roundtable has asked the FAA for a 60-day extension to the 30-day comment period. Thirty days is the minimum allowable, Ms. Wengert said. "Clearly, it is not designed to allow a robust comment period," she said.

Ms. Eshoo and Ms. Speier, on April 4, wrote to Anthony Foxx, the U.S. Secretary of Transportation, in reference to the unanswered questions in Ms. Nguyen and Mr. Lyons' letter and urged him to instruct the FAA to grant the requested extension.

"As things stand at the moment, the 30-day time period would be nearly exhausted before this critically needed information would become publicly available," they wrote. "The altitude of airplanes over communities heavily influences how much noise is imposed upon residents." ■

THE A. JESS SHENSON RECITAL SERIES AT STANFORD



Sunday, April 13th at 2:30 p.m.

EUGENE VILLANUEVA, BARITONE

JOHN CHURCHWELL, PIANO

Program: *Wanderer* – works by Schubert, Vaughan Williams, Tosti, and Steven Mark Kohn

Tickets: \$15 general / \$10 seniors
\$10 students (Stanford students free with SUID)

VOCAL MASTERCLASS WITH

EUGENE VILLANUEVA:

Monday, April 14th at 4:15 p.m.

Free and open to the public.

Both events are at Campbell Recital Hall, Stanford University.

Stanford Ticket Office:

(650) 725-2787 / tickets.stanford.edu

MUSIC
AT STANFORD

15% - 25% OFF ALL ITEMS**



MENLO
FLOORING & DESIGN

PREPARE TO BE FLOORED

APRIL 2014 GRAND OPENING RAFFLE!

Fill out form below for a chance to win one of these prizes:

Free Wool Carpet Installation or Custom Area Rug

2 Contemporary Area Rugs

Laguna Pouf Pillow

2 Tickets to the Guild Theater

Name: _____

Email: _____ Phone: _____

For more information visit: www.menloflooring.com

905 El Camino | Menlo Park, CA

650-384-6326

*Winners will be contracted via email or phone on May 1, 2014. Prizes are subject to change without notice. Must bring raffle ticket into store before May 1, 2014.**Sale ends May 1, 2014.

FILM FEST

continued from page 3

have," Justin said. "You have a lot of sports, but you don't have a lot of things for photography or film, for people who are into the arts."

One observation both boys shared regarding the movies they reviewed was that having money did not equal a good film.

"You could see that even if a person didn't have access to the nicest camera, they were better able to tell a story," Justin said. "It was really interesting to see that you don't need the best equipment to make a good movie."

Information

Sacred Heart Preparatory's first annual International Film Festival will be held in the Campbell Center for the Performing Arts at Sacred Heart Prep, 150 Valparaiso Ave. in Atherton, on Thursday, April 10, from 6 to 8 p.m. The event is open to the public; the school welcomes local high school students in particular. Admission is free. ■



1 Faxon Road ATHERTON

This grand estate on a prime Circus Club-area lot of approximately 1.7 acres (per county) is reminiscent of a fine Italian manor, with 12,800 sq. ft. (per county) of true old-world craftsmanship. The quality of this home is apparent in every detail—from the curved millwork and fine stonework, to the Venetian plaster walls, you will notice that no expense was spared or detail overlooked. The public areas of the house, including the formal living room, dining room and kitchen are fit for royalty. From the moment your guests walk past the manicured gardens and enter the grand foyer with 25' ceilings and an imperial staircase, they will know they have arrived somewhere very special. What is truly remarkable about this property is how well it blends grandeur and comfort. Despite being able to host large galas, this home is remarkably comfortable for everyday living. You will find 5 large bedrooms, including a spectacular master suite that simply has to be seen to be appreciated. You also have an impressive outdoor entertainment terrace, pool, putting green, outdoor kitchen, library and wine cellar.

OFFERED AT \$21,988,000

For video tour, more photos and information please visit:

www.1FaxonRd.com



Ken DeLeon **Mary Gullixson**

(650) 488-7325 **(650) 888-0860**

CALBRE# 01342140 CALBRE# 00373961

info@deleonrealty.com mary@apr.com



Grand Circus Club Estate



Students, from left, Sam Corona, Victor Escatel, Jared Park and Blanca Vina performed an impromptu concert at O'Hare airport while they were stranded there for six hours.



Photo courtesy of JoAnne Goldberg

M-A orchestra takes the Gold at festival

Submitted by JoAnne Goldberg, parent of an orchestra member

Menlo-Atherton High School's music director, Kent Kurrus, was not surprised that his student orchestra captured a coveted Gold Medal at the annual Chicago Festival of Gold held at the end of March.

"These young musicians give their all," says Mr. Kurrus, who launched the orchestra in 2011 and has watched it double in size in just three years. "Our students exhibit tremendous individual talent and the drive to be successful as a group."

The Festival of Gold is an invitation-only event, and the Menlo-Atherton orchestra

Peninsula Easter Services



ST. ANN ANGLICAN CHAPEL

A TRADITIONAL EPISCOPAL CHURCH
1928 Prayer Book Parish
541 Melville Ave., Palo Alto, CA 94301
650-838-0508

The Most Reverend Robert S. Morse, Vicar
Reverend Matthew Weber, Assistant

HOLY WEEK

Child Care Provided

Sunday, April 13	Palm Sunday	12 Noon	Blessing of Palms, Procession & Choral Eucharist
Thursday, April 17	Maundy Thursday	7 pm	Choral Eucharist
Friday, April 18	Good Friday	3 pm	The Way of the Cross
		7 pm	Good Friday Liturgy
Saturday, April 19	Holy Saturday	8 pm	Easter Vigil, First Liturgy of Easter
Sunday, April 20	Easter Sunday	11 am	Choral Eucharist & Sermon



CHRIST CHURCH

The Episcopal Parish of Portola Valley & Woodside

Saturday April 19: Children's Eucharist @ 4 p.m.

Sunday April 20: Sung Eucharist @ 8 a.m. & 10 a.m.

815 Portola Road, Portola Valley; tel. (650) 851-0224
www.ccpvw.org

www.facebook.com/ccpvw



Egg hunts on both days!



Join Us For Easter

Easter Sunday, April 20

6:30 am in the Memorial Garden

8:30 am* & 10:30 am* in Church with Festival Choir

*Indicates child care available

330 Ravenswood Ave., Menlo Park (650) 326-2083
www.trinitymenlopark.org

Woodside Village Church

HOLY WEEK SERVICES

April 13th Palm Sunday – 9:30 A.M.

April 18th Maundy Thursday/Good Friday combined –
Dinner at 6:30 P.M. followed by
"Remember Christ's Walk to the Cross" in the sanctuary

April 20th Easter Worship Service 9:30 A.M.

Easter Egg Hunt and Celebration Reception Immediately Following Service

Reverend Michael E. Harvey, Pastor
Reverend Dorothy Straks, Minister of Music

Woodside Village Church

3154 Woodside Road, Woodside 650.851.1587 www.wvchurch.org



VALLEY PRESBYTERIAN CHURCH

Risk for the Journey

Join Us
on Easter Sunday!

Easter Sunrise Service 6:15am

Easter Services 9:00 & 11:00am

Valley Presbyterian Church
945 Portola Road, Portola Valley
www.valleypreschurch.org
650-851-8282



A resource for special events
and ongoing religious services.

For more information please email Blanca Yoc
at byoc@pawekly.com or call 223-6596.

secured its spot by winning the Anaheim Music Festival in the spring of 2013.

Music groups from around the United States and Canada competed during the four-day festival that began on March 28, culminating on March 31 with a day of performances at Chicago Symphony Hall. The orchestra played three pieces for the audience and judges, who agreed that M-A's rendition of the Brandenburg Concerto was the orchestral highlight of the day.

When the 32 student musicians weren't practicing or play-

ing, they took advantage of the opportunity to tour Chicago's Field Museum, Museum of Science and Industry, Water Tower Place, and Millennium Park. They sampled classic Chicago pizza at Gino's East, a lunch sponsored by the M-A Band Boosters, and strolled down Michigan Avenue. The M-A Band Boosters also helped underwrite trip expenses,

The music did not end when the festival concluded. Returning home on April 1, the musicians found themselves stranded for six hours at

O'Hare airport. Undaunted, they pulled out their instruments and reprised their Chicago Symphony program — an impromptu concert that drew cheers and applause from fellow travelers and airport staff.

Kent Kurrus, who joined the M-A faculty in 2010, also directs the school's three jazz bands and concert band.

express

Sign up today at
AlmanacNews.com

Quality Care.
Quality Life.

When life brings you unexpected challenges, Agility Health is by your side with full service healthcare delivered in the comfort and privacy of your home.

Company employed **Personal Care Attendants** available to meet your hourly or live-in needs.

Agility Health
The team you trust.

To learn more about Agility Health, please call us at (650) 453-5100 or visit us online at www.agility-health.org


RN Care Management • Skilled Nursing Care • Rehabilitation Care • Community Resources • Family Health Counseling



Peninsula Easter Services

Alleluia! Holy Week Services

April 17 6:00 pm Seder Dinner
April 18 Noon & 7:00 pm Good Friday Services
April 20 9:30 am Easter Festival Service
Children's Easter Egg Hunt after the service!


Bethany Lutheran Church
1095 Cloud Avenue, Menlo Park
Bethany 650.854.5897 www.bethany-mp.org



Grace Lutheran Church

3149 Waverley Street • Palo Alto, CA 94306 | www.gracepa.org | 650.494.1212

Holy Week

Maundy Thursday
4/17 | 7:30 pm

Good Friday
4/18 | 12 pm & 7:30 pm

Easter Vigil
4/19 | 7:30 pm

Easter Sunday

April 20 | 8:30 am & 10:45 am

Easter Breakfast: 9:00 - 10:30 am

Celebrate Easter!



ST. MARK'S EPISCOPAL CHURCH PALO ALTO

Maundy Thursday— April 17
6:15pm *Monastic Supper & Liturgy of the Word followed by Holy Eucharist & Stripping of the Altar*
Good Friday — April 18
Noon to 2:00pm *The Last Seven Words*
2:00 to 3:00pm *Labyrinth Stations: A Walking Meditation*
7:30 to 8:30pm *Tenebrae: The Office of Shadows*
Easter — April 20

5:30am *Easter Vigil, Eucharist & Baptism*
8:00 to 9:30am *Festive Breakfast & Family Easter Activities*
10:00am *Festive Holy Eucharist*
600 Colorado Ave, P.A. (650) 326-3800
www.saint-marks.com

Journey to Easter

You Are Invited

7:30p.m. Thursday, April 17 Maundy Thursday
7:30p.m. Friday, April 18 Good Friday
7:00a.m. Sunday, April 20 Easter Sunrise
11:00a.m. Sunday, April 20 Easter Service



WESLEY UNITED METHODIST

470 Cambridge Ave (one block off California)
Rev. Randy Smith



Holy Week & Easter St. Bede's Episcopal Church

2650 Sand Hill Rd, Menlo Park
www.stbedesmenlopark.org

Maundy Thursday, April 17
7:30pm Eucharist, foot washing

Good Friday, April 18
noon & 7:30pm Liturgy

Holy Saturday, April 19
7:30pm Great Vigil of Easter

Easter Sunday, April 20
8:00am Eucharist with hymns
10:15am Eucharist with choir
11:30am Easter Egg Hunt
Nursery available 10-11:30am



THE JEAN AND BILL LANE LECTURE SERIES 2013-2014

Presents *Kathryn Harrison*



Reading

MONDAY, APRIL 14, 2014, 8:00 PM
CEMEX AUDITORIUM
ZAMBRANO HALL, 641 KNIGHT WAY
STANFORD UNIVERSITY

"Acutely conscious of the ways in which the past shapes the present, Ms. Harrison writes with skill, passion and a fierce need to make sense of her characters' lives."

— MICHIKO KAKUTANI, *New York Times*

FREE AND OPEN TO THE PUBLIC

INFORMATION: 650.723.0011 [HTTP://CREATIVEWITTING.STANFORD.EDU](http://creativewriting.stanford.edu)

Sponsored by Stanford University's Creative Writing Program

Did you know

our students make movies to show what they know?

Trinity School 2nd Graders are storytellers. Watch how they research, write, design, build and collaborate:



Trinity School has openings in select grades for Fall 2014.

**You're Invited:
Trinity School
Open House**

Wednesday, April 23
8:20 – 10:30 a.m.

Visit Jr. Kindergarten through
2nd Grade Classrooms
2650 Sand Hill Road
rsvp@trinity-mp.org



City starts drafting comments on train electrification draft EIR

By Sandy Brundage

Almanac Staff Writer

■ MENLO PARK

The Menlo Park City Council weighed in on the draft environmental impact report for Caltrain's electrification project when it met on April 1.

The transit agency is backing a \$1.5 billion plan to switch to electrified trains to benefit both the environment and Caltrain's financial state, as well as provide the capacity to share the tracks with high-speed rail, even as that project struggles to maintain momentum. Caltrain estimates the project would be completed in 2019, according to the staff report.

According to the draft EIR, however, electrification carries some disadvantages, such as the elimination of thousands of trees, and the construction of safety walls, substations and 50-foot-tall poles to carry power along the tracks. The Menlo Park Caltrain station has been listed on the National Register of Historic Places since 1974, so the proposal to have poles sprouting around such a landmark is giving the city some pause.

Given the project's ties to high-speed rail, the council is taking pains to ensure that everyone remembers which controversial design features will not be welcome within Menlo Park.

"The City is only interested in a two-track blended system in Menlo Park within the existing Caltrain right-of-way or the system in an underground configuration. The City is not supportive of any system (that) is on an elevated structure, and any system which would allow track expansion for any phase of the project unless in an underground configuration," the council's latest comment letter states.

As for the draft EIR, it was found wanting on several fronts, including a mismatch between the way the report evaluates traffic impacts and the methodology used by the city, leading to "additional impacts that are not currently disclosed," according to the letter.

Commenting on an issue is one thing, solving it quite another, as Councilman Rich Cline noted during the meeting. "We have our way of studying these impacts that we have to use ... and it feels like an unresolved issue to put in the letter (that) we need to use our own measuring stick on that," he said. "How will Caltrain solve that when every city uses its own methodology?"

That also impacts the report's

See **TRAIN**, page 19

Greatly appreciated...



“We want to express our thanks for all your hard work in selling our unique home. We greatly appreciate your willingness to stick with the task and your continued enthusiasm and effort. You exhausted every angle and worked creatively to bring in potential buyers and encourage their interest. For your wonderful efforts, we will highly recommend your services to others.”



30+ years of
local knowledge.
Born in
Menlo Park.
Raised in
Atherton.
A Woodside
resident.

STEVE GRAY

BRE# 01498634

650-743-7702

sgray@cbnorcal.com

TRADITIONAL ELEGANCE



2 SERRANO DRIVE, ATHERTON

This premier West Atherton estate, built by Pacific Peninsula Group, showcases consummate traditional style and elegance blended with everything needed for today's California lifestyle. Impeccable details abound with ebony-stained hardwood floors and refined millwork. Three levels include six bedrooms – each with en suite bath, a library, family room, media room, and custom wine cellar. The impressive grounds have beautiful gardens, a pool, spa, fireplace terrace, and outdoor kitchen with barbecue.

- Designed and built by Pacific Peninsula Group
- Six bedrooms and six and one-half bathrooms
- Spacious living room, formal dining room, and handsome library
- Tremendous chef's kitchen features limestone counters, professional appliances, and breakfast area
- Large upstairs master suite with sitting room, walk-in closet, and spa-like bath
- Main-level and lower-level guest suites
- Media room and 500+ bottle custom wine cellar
- Attached, 3-car garage
- Gorgeous grounds with pool, spa, fireplace, and outdoor kitchen
- Approximately 8,255 total sq. ft.*
 - Main level ±3,413*
 - Upper level ±2,510*
 - Lower level ±1,572*
 - Garage ±760*
- * Square footage per architect
- Approximately .87 acre

OFFERED AT \$7,200,000

VIRTUAL TOUR AT WWW.2SERRANODR.COM

HUGH CORNISH

650.566.5353

hcornish@cbtnorcal.com

CalBRE# 00912143



NATALIE COMARTIN

650.380.3122

natalie.comartin@cbtnorcal.com

CalBRE# 01484129



LISA GAO

408.750.6962

lisa.gao@happyrealty.org

CalBRE# 01720219



This information was supplied by Seller and/or other sources. Broker believes this information to be correct but has not verified this information and assumes no legal responsibility for its accuracy. Buyers should investigate these issues to their own satisfaction.

24/7 On Call HOME CARE Experts

Let us help your loved ones retain their pride, dignity & independence with our full-service home care.

- Bathing, dressing, grooming & toileting
- Light housekeeping & meal preparation
- Transportation, shopping & errands
- Medication reminders & physical activities
- Companionship & more

Best Home Care For Le\$\$

Call (650) 328-1001
now to book your
FREE initial assessment



\$1000 off

First Month of Live-in
Home Care Service*
*6 months minimum,
offer expires 04/30/14



(650) 328-1001 • www.careindeed.com • 1150 Chestnut St., Menlo Park, CA 94025

Bonhams

Auction Appraisal Event for Fine Jewelry

Tuesday April 15
Palo Alto

A Bonhams specialist will be available
to offer complimentary auction estimates
with a view to selling in New York.

By appointment only:
+1 (415) 503 3306
lynne.arkin@bonhams.com



Sold for a world-record \$10,047,943
A deep-blue diamond 'Trombino' ring,
circa 1965

International Auctioneers and Appraisers - bonhams.com/jewelry

©2014 Bonhams & Butterfields Auctioneers Corp. All rights reserved. Bond No. 57BSBGL0808

School district sued after student injured by piano

By Sandy Brundage

Almanac Staff Writer

In the land of earthquakes, even IKEA has kits to bolt heavy indoor furniture to the walls, just in case. Turns out, securing heavy furniture — in this case, a piano — outdoors on a school playground might also be a smart idea.

The parents of a 9-year-old student are suing the Menlo Park City School District for injuries they say she sustained when a piano on the playground of Oak Knoll School toppled over on her as another student jumped on top of it, according to court documents.

The lawsuit, filed in San Mateo County Superior Court on March 18, alleges that the girl is expected to have “some permanent disability” as a result of the accident. The school should have known that an unrestrained piano with wheels could easily be moved by students, the complaint states, and “that injury was likely to occur frequently in the absence of adequate supervision.”

The Ahn family’s attorney, Forrest Shryock, said the parents are very concerned not only for their daughter, but also the other students on campus. “Playground supervision is a big issue in California now, with tight budgets leading to limited supervision. This (case) kind of fits into that whole issue,” he said. “You’d think that if someone saw pianos being pushed around, and kids climbing on them, they would have stopped it.”

He said that he’s been told the piano is now secured to a fence.

According to the school district, it received notice of the lawsuit on Thursday, April 4; officials couldn’t comment on any specifics at this time.

“This was an unfortunate accident, and we regret any injuries this child sustained,” Superintendent Maurice Ghysels told the Almanac. He said the piano was moved to the playground “as part of a trend to place street pianos in public places

See PIANO, page 19



TOWN OF PORTOLA VALLEY NOTICE OF A PUBLIC HEARING ON A ZONING ORDINANCE AMENDMENT TO ADD SECTION 18.17, STATE DENSITY BONUS LAW, PURSUANT TO THE REQUIREMENTS OF CALIFORNIA GOVERNMENT CODE SECTION 65915

NOTICE IS HEREBY GIVEN that the Town Council of the Town of Portola Valley will hold a Public Hearing on the proposed adoption of a Zoning Ordinance Amendment to implement the requirements of State Density Bonus Law. The proposed Amendment specifies the materials, process and related requirements for an application under State Density Bonus Law. The Public Hearing will be held on **Wednesday, April 23, 2014 at 7:30 p.m.**, in the Town Council Chambers (Historic Schoolhouse), 765 Portola Road, Portola Valley, California. It is recommended that the project be found categorically exempt from CEQA.

Public Hearings provide the general public and interested parties an opportunity to provide testimony on these items. If you challenge a proposed action(s) in court, you may be limited to raising only those issues you or someone else raised at a Public Hearing(s) described above, or in written correspondence delivered to the Town Council at, or prior to, the Public Hearing(s).

Information pertaining to the proposal may be viewed at Town Hall, Monday through Friday, 8:30 a.m. to 1:00 p.m. and 3:00 – 5:00 p.m. All interested persons are invited to appear before the Town Council to be heard at the time and place mentioned above.

Dated: April 3, 2014

Sharon Hanlon
Portola Valley Town Clerk

■ POLICE CALLS

This information is from the San Mateo County Sheriff's Office and the Menlo Park Police Department. Under the law, people charged with offenses are considered innocent unless convicted. The dates police received the report are shown.

WOODSIDE

Residential burglary reports:

■ Someone removed the screen and louvered glass from a rear door on a Skywood Way home, broke into the home and stole jewelry, a watch and a laptop computer, a total loss estimated at \$34,500. March 24.

■ Someone entered a home on Fox Hill Road by breaking in through a window on a rear door. The home was staged for sale. The only item reported stolen was water that the suspect had used in the bathroom. March 24.

Report of terrorist threats: A teacher at Woodside High School reported receiving a threatening email message from someone who claimed not to have written it. Investigators and the school district's Internet technology department are working on the incident. March 24.

PORTOLA VALLEY

Residential burglary report: Someone entered a home on Mapache Drive while the owner was away and stole jewelry valued at about \$410. March 25.

MENLO PARK

Commercial burglary reports:

■ The door of a locked carport storage locker on Monte Rosa Drive was found pried open and several tools stolen, a loss of about \$500. April 3.

■ Two people left the Safeway supermarket on Sharon Park Drive with \$250 worth of baby formula without having paid for it. April 3.

Strong-arm robbery report: A man near the corner of Newbridge Street and Willow Road was approached and robbed of \$37 in cash that he was holding. He was not injured and the robber fled. March 22.

Auto burglary reports:

■ A vehicle parked in the 200 block of El Camino Real was found with a window smashed and a briefcase, laptop computer and Apple iPad tablet computer stolen, a total loss of about \$1,900. March 24.

■ Seventeen badminton racquets were stolen from two vehicles parked in the 700 block of El Camino Real. Each vehicle had a smashed window. All told, a loss of about \$710. March 27.

■ Someone broke into a locked vehicle parked on Roble Avenue, rummaged through several compartments in the vehicle, and stole an \$8 spare car key from the center console. March 22.

■ Someone smashed a window of a vehicle parked in the 500 block of El Camino Real, but did not take anything from inside. March 24.

Theft reports:

■ Someone stole eight spools of copper wire, two gas cans and a weed whacker, a total loss of about \$3,060, from an unlocked storage locker in the 2900 block of Sand Hill Road. March 27.

■ A locked bicycle valued at \$450 was stolen from the storage area of an apartment complex in the 1000 block of Santa Cruz Avenue. April 2.

■ Someone stole a toolbox and tools, a \$400 loss, from an unlocked carport closet on Monte Rosa Drive. March 27.

■ Items worth about \$200 were stolen, without forced entry, from a vehicle parked on Roble Avenue. April 3.

■ A Palo Alto woman was arrested on theft charges for allegedly stealing \$85 in goods from the Safeway supermarket at 525 El Camino Real. The goods were returned. March 26.

■ A man allegedly tried to return items he had allegedly stolen from Unleashed by Petco at 515 El Camino Real, but when the attempt proved unsuccessful, he fled the store with the items before police arrived. March 22.

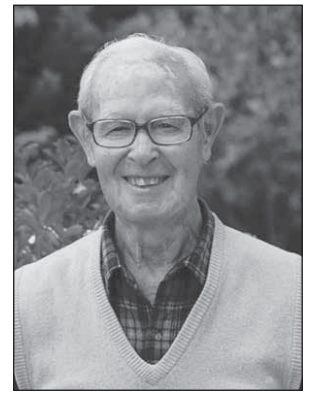
■ Police cited a youth on charges of stealing two bottles of hairspray from the Safeway on Sharon Park Drive. The hairspray was returned. March 31.

Fraud report: Someone "got nervous" when attempting to cash a \$900 fraudulent check at a bank in the 600 block of Santa Cruz Avenue and left the bank without cashing it. March 22.

Frank Pasqua

Frank Pasqua, 87, peacefully passed away Tuesday, April 1, 2014 at his home in Menlo Park, CA. He is survived by his wife, Connie, his daughter, Margaret, and her husband, Rich, and their children, Domenic and Mario, his son, Joe, and his wife, Mary. Frank also leaves behind two brothers and a large extended family in Sicily and the Bay Area. The family wishes to extend our sincere thanks to the nurses and staff of Kaiser Hospice Service for their wonderful care.

Memorial donations may be made to the American Cancer Society or Lucile Packard Children's Hospital.



PAID OBITUARY

SUPPORT LOCAL JOURNALISM

Support The Almanac's print and online coverage of our community.

Join today: SupportLocalJournalism.org/Almanac

David A. London, M.D.

devoted husband, father, and physician

March 14, 1950 – March 26, 2014

28-year resident of Portola Valley, California

We mourn the loss of David, beloved husband, best friend and soul mate to his wife, Valerie, and adored Papa to their son, Benjamin. He was loved, respected, and admired by innumerable friends, family and colleagues. He was a gifted Radiologist and a natural educator.

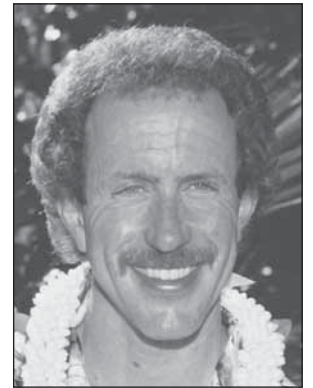
David was born in Miami Beach, Florida, where his love for the ocean, boating and fishing flourished. He graduated from Hamilton College, New York, class of 1971. David chose a career in medicine, following in the footsteps of his parents, Rose E. London, MD and Seymour B. London, MD, his grandfather Ettore Perrone, MD, his uncles Francis Perrone, MD and Hector Perrone, MD, and his sister Elizabeth Rogers, MD. In 1975, he graduated from medical school at Yale University. He subsequently completed his Radiology residency at Stanford University and a Fellowship at UCSF, where he was also on faculty. While at Stanford University, Dr. London developed a technique, using a modified ocular ultrasound transducer, to image the neonatal brain via the fontanel in order to search for intracranial hemorrhages in premature infants. At UCSF, David was a member of the early team developing NMR imaging, now referred to as MRI. In 1983, David joined the El Camino Radiologists Medical Group and the medical staff of El Camino Hospital in Mountain View, California, where he worked until his retirement in 2005.

David had an adventuresome spirit and an incredibly strong work ethic. He had a passion for a wide range of interests which included boating, fishing, sailing, whitewater kayaking, skiing, horseback riding, archery, bicycling, cooking, adventure travel, the arts, and philanthropy.

He was an extraordinary individual and will be profoundly missed by all who knew him. We will always cherish the memory of his integrity, his compassion, his generosity, his intellect, his love for his family, and his commitment to living life to its fullest.

Valerie and Benjamin extend their sincere thanks to the family, friends, colleagues, and medical team that provided care, comfort and support to David. We especially extend our deepest gratitude for the love, friendship, support and medical expertise given 24/7 by our dear friend Bruce Beck, MD and his wife Kathy Marini Beck, MD.

A private service will be held off the coast of Florida aboard David's boat, *Destiny*. In lieu of flowers, the family requests donations, in memory of David A. London, M.D., to Seacology, attention Aaron Rashba, www.seacology.org, Berkeley, CA, or American River Conservancy, attention Alan Ehrgott, www.arconservancy.org, Coloma, CA.



PAID OBITUARY

TRAIN

continued from page 16

proposed mitigations, some of which, such as one proposed for El Camino Real at its intersections with Oak Grove and Glenwood avenues, the letter pronounces "unacceptable" for their failure to completely resolve traffic problems.

Other elements the council would like to see further explored include alternatives to running power poles alongside the tracks; it's been suggested that placing them in the center instead could spare some of the 629 Menlo Park trees that would otherwise be pruned or removed. The safety of the electric wires and poles powering the electric trains was not addressed in the DEIR despite the city's request early in the report process that it be studied.

The discussion did not, however, lead to a final draft of the city's letter to Caltrain.

Instead, the council subcommittee, composed of Rich Cline and Kirsten Keith, will hold a public meeting and incorporate additional comments as

needed.

Go to tinyurl.com/kso8gtv to review the proposed comment letter and associated staff report. ■

Helen Fabbro-Drew

Helen Fabbro-Drew, a longtime resident of Redwood City, passed away on March 28 at the age of 88.

Born in 1926, in Wellsville, Kansas, she attended Lawrence High School and Kansas University. She moved to California in 1947 where she spent the rest of her life.

Helen worked as a waitress for 55 years, 40 of those years at Fabbro's Restaurant in Redwood City. In her spare time, she loved to dance at every opportunity. She was an active member of the Highlands Community Club for over 30 years.

She is survived by her children, Deana Fabbro-Johnston of Redwood City and Steven Fabbro of Portola Valley. She was blessed with six grandchildren: Matthew Selaya, Jennifer Selaya-Painter, Joshua and Julie Ira, Elise and Ali Fabbro. In addition, she leaves four great grandchildren: Gabriel and Kiyomi Selaya, Anthony Figueroa, and Jianna Ira. Helen was pre-deceased by her daughter, Janet Fabbro-Ira; her granddaughter, Joy Ira; and two husbands, Luciano Fabbro and James Drew.

Helen will be remembered for her generosity and her devotion to her family and friends. Her love of life was instilled in each and every one of us.

A mass celebrating Helen's life will be held on Friday, April 11th, at 10:00 am, at St. Pius Catholic Church, 1100 Woodside Rd., Redwood City. A luncheon following the mass will be held at the Highlands Community Club, 1665 Fernside St., Redwood City. Please join us as we celebrate the life of our wonderful mother and grandmother.

The family would also like to give special thanks to VITAS Hospice Care for the past six months of special care and support for our mother and grandmother.

PAID OBITUARY

PIANO

continued from page 18

to encourage interest in music by students. We had an extra piano at our school, and after hearing of the success of this practice in San Jose, we placed the piano so it was available to students during recess. It was very well-received by students and parents."

The court has scheduled a case management conference for May 23. ■

EDITOR & PUBLISHER

Tom Gibboney (223-6507)

NEWSROOM

Managing Editor
Richard Hine (223-6525)

News Editor
Renee Batti (223-6582)

Lifestyles Editor
Jane Knoerle (223-6531)

Staff Writers
Dave Boyce (223-6527),
Sandy Brundage (223-6529)

Contributors
Marjorie Mader, Barbara Wood, Kate Daly

Special Sections Editor
Carol Blitzer

Photographer Michelle Le (223-6530)

DESIGN & PRODUCTION

Design Director
Shannon Corey (223-6560)

Assistant Design Director Lili Cao

Designers Linda Atilano, Rosanna Leung,
Paul Llewellyn, Kameron Sawyer

ADVERTISING

Vice President Sales and Marketing
Tom Zahiralis (223-6570)

Display Advertising Sales
Wendy Suzuki (223-6569)

Real Estate Manager
Neal Fine (223-6583)

Real Estate & Advertising Coordinator
Diane Martin (223-6584)

Legal Advertising
Alicia Santillan (223-6578)

Published every Wednesday at
**3525 Alameda De Las Pulgas,
Menlo Park, CA 94025**

Newsroom: (650) 223-6525
Newsroom Fax: (650) 223-7525

Advertising: (650) 854-2626
Advertising Fax: (650) 223-7570

Email news and photos with captions to:
Editor@AlmanacNews.com

Email letters to:
letters@AlmanacNews.com

The Almanac, established in October 1965, is delivered each week to residents of Menlo Park, Atherton, Portola Valley and Woodside and adjacent unincorporated areas of southern San Mateo County. The Almanac is qualified by decree of the Superior Court of San Mateo County to publish public notices of a governmental and legal nature, as stated in Decree No. 147530, issued December 21, 1969. ©2014 by Embarcadero Media Company. All rights reserved.

Subscriptions are \$60 for one year and \$100 for two years.



WHAT'S YOUR VIEW?

All views must include a home address and contact phone number. Published letters will also appear on the web site, www.TheAlmanacOnline.com, and occasionally on the Town Square forum.

Town Square forum

Post your views on the Town Square forum at www.TheAlmanacOnline.com

Email your views to: letters@almanacnews.com and note this it is a letter to the editor in the subject line.

Mail or deliver to: Editor at the Almanac, 3525 Alameda de las Pulgas, Menlo Park, CA 94025.

Call the Viewpoint desk at 223-6507.

Viewpoint

IDEAS, THOUGHTS AND OPINIONS ABOUT LOCAL ISSUES FROM PEOPLE IN OUR COMMUNITY. EDITED BY TOM GIBBONEY

Menlo Park wrestles with non-resident fees

Cities like Menlo Park started as homogeneous enclaves that over the years added territory on all sides as outlying residents opted in so they could receive city services. Often this process leapfrogged over so-called unincorporated territory, and in several cases, like University Heights and Menlo Oaks, the city simply grew around them and residents never did opt to join the city.

But whether official residents of Menlo Park or not, those living in “unincorporated” Menlo Park have come to enjoy the same zip code, the same schools and the same real estate values as official citizens of Menlo Park, but are exempt from city tax assessments.

This dichotomy has existed for years and is rarely an issue. Unincorporated residents have accepted that they cannot vote for Menlo Park City Council members, cannot participate in some city programs, and in most cases, are not treated as equals when signing up for the city’s numerous recreation programs for adults and children.

This issue popped up after a Menlo Oaks resident became upset when his daughter attempted to register for a gymnastics class with fellow city-resident classmates after the deadline for nonresidents, and the class had filled up. Had she registered in time and was willing to pay a surcharge, she would have been accepted. But along with lower fees, some classes give priority to city residents, only accepting nonresident registrations after a class deadline. If a class fills up by the deadline, nonresidents are out of luck, which sparked the questions raised by the disgruntled parent in recent testimony before the Parks and Recreation Commission.

Now the commission, which is examining changes in the current 35 percent surcharge for nonresidents, has asked city staff members for more information about why city residents get priority in registering for classes, and what contributions unincorporated residents make to city coffers. The surcharges and higher fees have come about over the years and now are a key contributor as the city attempts to recover all or most of its costs for the programs.

It is a worthwhile exercise. Almanac blogger Erin Glanville took a deep look at the subject (see her take at tinyurl.com/noo43sz)

and found significant differences in the fees charged nonresidents in Menlo Park and nearby communities. She also found that some nonresidents have abandoned Menlo Park classes and registered elsewhere (where fees are lower), which takes revenue away from the city and those offering the classes.

In some cases, the nonresident fees are not significant. For example, registering for a Menlo Park gymnastics class costs \$13.40 for residents and \$18 for nonresidents if the student is attending only once a week. But for three-times-a-week use, the fees drop to \$10.45 and \$14 respectively for residents and nonresidents. All users must pay a fee of \$9 for residents and \$11.25 for nonresidents. Costs go up considerably to rent gym space for a season of volleyball: Cost for a team of residents is \$527, and nonresidents, \$713.

Nonresident fees are a significant source of revenue for the city, bringing in nearly \$400,000 a year. Overall, about 50 percent of those participating in the city’s recreation programs are nonresidents, and 16 percent of those live in unincorporated areas sharing the city’s zip code.

Changing that formula will be difficult for the commission, given its huge financial impact. The bottom line is simple: Nonresidents do not pay the taxes that support all city services, including recreation programs. Nevertheless, this is an opportune time to reassess all the city’s fee structures to make sure they are fair to residents and nonresidents alike.

And it is especially important to look at nonresidents who live in unincorporated Menlo Park whose children attend local schools and whose parents pay sales taxes in city businesses. Under the current policy, these children can sometimes get shut out of programs they want to attend with their friends, who live within the city boundaries. One way to improve is to give unincorporated Menlo Park residents an equal shot at all classes, but otherwise assesses them the same fees as other nonresidents. If fees are applied equally across all activities, the city may be able to slightly reduce the surcharge, but we doubt if any commissioner or council member would agree to lose a significant portion of the \$400,000 a year by dropping the surcharge for nonresidents.

EDITORIAL

The opinion of The Almanac

Initiative critics harken back to Derry project

By Andy Cohen

Remember the Derry project opposition (led by Menlo Park residents) who obtained enough signatures to qualify for the ballot in 2007, and then produced a compromise project nearly as large as the original, but less dense and not as massive?

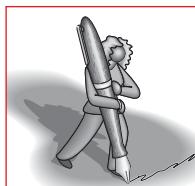
I certainly do; I also recall the criticism residents suffered at the hands of pro-growth residents who accused the referendum supporters of killing the project after a compromise was reached. It was the 2008 recession and its aftermath that really killed the project. After enduring the kind of rewriting of history that was widely propagated, I feel a necessity to identify the greed that motivated that character assassination of decent people only concerned about quality of life in our fair city.

Menlo Park is unique among its sister municipalities in the area. It combines a mixture of

neighborhoods (both in terms of economics and culture), yet offers all its residents the full-service and range of amenities of its wealthiest neighbors without the “ghetto-ization” that has occurred in larger cities all along the peninsula corridor.

Now, once again, the established authorities have driven the visioning process into an extreme misrepresentation of standards that encourages distortion of residents’ reasonable desires merely for the benefit of the wealthiest individuals. Economists, planners, and philosophers can be cited who understand this manipulation far better than I, but basically it comes down to “follow the money.”

Pro-development advocates played a bait and switch game between the two phases of the downtown plan, replacing one set of consultants with another halfway through the process, ultimately permitting the total



GUEST OPINION



Our Regional Heritage

Atherton Heritage Association

Billy Roth and Pete B. play clowns on horseback in 1925 before a performance at the new Circus Club in Atherton.

elimination of “public benefit,” and leaving the criteria sufficiently ambiguous to allow monopolization of the space and uses by only the largest entities in the game.

In the careful language of

the experts a regulatory structure was created that permitted Stanford and a few big players to dictate the future character of our city for the benefit of

See **INITIATIVE**, next page

Former mayors endorse Plan initiative

By nine former Menlo Park mayors

We the undersigned are former Menlo Park mayors who have served Menlo Park for a total of 64 years. We come together to answer the question posed by the Almanac on March 25 — whether to sign or not to sign the SaveMenlo initiative petition. Our response is an unreserved and wholehearted, “Yes, sign!”

Never before in Menlo Park has there been a more grave question. As former mayors we weathered many controversial issues, some that were decided by a referendum, an initiative or an election that had political ramifications. None were easy.

Facing our council today is an initiative that was launched by a neighborhood grass roots organization that feels its council has let it down. It was a bold step, as their only recourse was to take their case to the real stakeholders, their fellow residents, the voters. We believe their case is strong.

The Specific Plan (SP) began with good intentions that we supported. The Plan’s 12 goals described in clear and reassuring terms what the residents expressed, both at public meet-

ings and through mail surveys: to maintain the town’s village character while providing greater east/west connectivity, revitalizing underutilized parcels, expanding shopping, dining and neighborhood services to ensure vibrancy, providing new residential opportunities and including accessible public open space. A promise that resonated was that the Plan would “ensure that El Camino Real development would be sensitive to and compatible with adjacent neighborhoods.”

Unfortunately, the reality of the two large proposals before the City contradicts the vision promised during the SP process. Large office complexes were not sought by the residents. Residents heard descriptions and saw renderings of moderate developments that featured a balance of retail, restaurants, a hotel, office, plaza and undercrossings of the train tracks. We believed that the Plan would make revitalization more predictable for developers, and the rules would support the

community’s vision.

When, in the first two years of a 30-year plan the first two development proposals on El Camino Real exceed by 50 percent the projected office growth and are 88 percent of the non-residential growth projected, there needs to be a serious re-evaluation. The proposals from Stanford and Greenheart have revealed the flaws in the SP that will rob from other property owners in the Plan Area the opportunity to easily redevelop their properties.

This is in stark contradiction of the SP’s purpose.

The city needs a long range plan that provides certainty for property owners and residents alike. The initiative corrects three flaws in the Plan and offers a more moderate approach by capping office uses on the three largest parcels on El Camino Real to 100,000 square feet, so as to preserve space for retail, hotel, housing, and local serving businesses.

When the SP’s growth limits have been reached for office

and non-residential development, any amendment to the SP that would increase the square footage limits that were approved July 12, 2012 can only be approved by Menlo Park voters.

The initiative also modifies the definition of open space so private balconies above the first floor are not counted as project open space. A private balcony should be private.

The \$150,000 the Council recently allocated to study the initiative should be used to determine if the SP can actually work for the next 28 years, considering that the limit for office development has almost been reached in the first two years. When the build-out limits are reached, will the city amend the Plan to allow more development and return to a piecemeal approach? Impacts to traffic, the city’s budget, the balance of jobs/housing, and school classroom size seem to have been severely underestimated.

The Greenheart and Stanford proposals have opened our eyes to the flaws in the SP. As currently written, it will not assure a reasonable projection of balanced growth for the next 28 years. We strongly encourage Menlo Park residents to sign

SaveMenlo’s petition, which we see as a conservative compromise that will confirm the Specific Plan’s goals.

Former council members Jack Morris 1982-1994; Gail Slocum 1990-1994; Steve Schmidt 1994-2002; Mary Jo Borak 1998-2002; Paul Collacchi 1996-2004; Chuck Kinney 1996-2004; Heyward Robinson 2006-2010; Kelly Fergusson 2004-2012; and Andy Cohen 2004-2012.



INITIATIVE

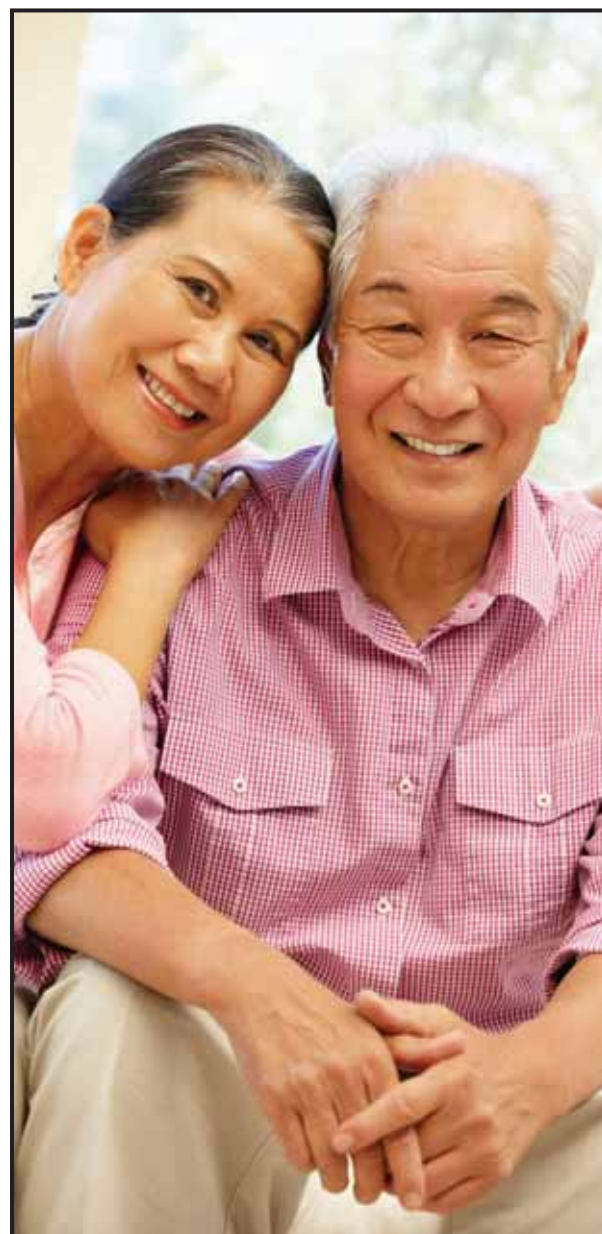
continued from previous page

corporate entities and primarily the wealthiest, at the expense of the vast majority of residents.

Take back the process, take back the city, take back control.

Sign the initiative and limit the amount of office space and traffic we will allow in Menlo Park. Preserve diversity; reject higher density, and take back the process. We know only too well how the Derry project was a harbinger of these new high-rise projects, and it is not too late to halt the manipulation by outsiders and further degradation of our quality of life.

Andy Cohen is a former Menlo Park mayor and council member.



Every moment is precious.

Count on Pathways to keep it that way.

- ✓ Home Health
- ✓ Hospice
- ✓ Private Duty

“Let me tell you how AWESOME Pathways is—we have had really fantastic, caring caregivers. From the very first phone call... everyone was caring and professional.”

—Liz Mazzei, daughter of a Pathways patient

Pathways is non-profit and affiliated with local community hospitals, providing care for 37 years.

◆ 1.888.755.7855 ◆
pathwayshealth.org



PATHWAYS
Care with kindness and dignity



Calendar

MEETINGS, MUSIC, THEATER, FAMILY ACTIVITIES AND SPECIAL EVENTS

Visit AlmanacNews.com/calendar to see more calendar listings

Art Galleries

'Japan Revisited' Photo Exhibit The Portola Art Gallery presents "Japan Revisited," photographs by Frances Freyberg. The color photos feature landscapes, cityscapes, shrine scenes and portraits from Freyberg's 2013 travels through the country. Monday-Saturday, April 1-30, 10 a.m.-5 p.m. Free. Portola Art Gallery, 75 Arbor Road, Menlo Park. Call 650-321-0220. www.portolaartgallery.com

'SpaceCase': Paintings by Jessica Eastburn The Canada College Art Gallery presents "SpaceCase," a series of paintings by local artist Jessica Eastburn. Using traditional manual methods, Eastburn has created paintings that resemble highly-digitalized artwork. Monday through Thursday, through April 17, 9 a.m.-2 p.m. Free. Canada College Art Gallery, Building 9, Room 152, 4200 Farm Hill Blvd., Woodside. Call 650-306-3336. www.canadacollege.edu

Lee Middleman Ceramic Open Studio Lee Middleman will display his recent ceramic art — often both functional and decorative — in his gallery and studio in Portola Valley. This spring, Lee's work is in two national ceramic competitions and two regional exhibitions. April 12-13, 10 a.m.-5 p.m. Free. Lee Middleman's Studio and Gallery, 16 Coalmine View, Portola Valley. Call 650-851-0535. www.LeeMiddleman.com

Classes/Workshops

Creative Writing Class This class will assist those interested in writing stories, either for personal satisfaction or publication. The instructor, author and feature columnist Phyllis Butler, has had her work appear in the Los Angeles Times, San Francisco Chronicle, San Jose Mercury News and other international publications. Tuesdays, April 3-24, 1:30-2:30 p.m. \$55 for all meetings; \$15 drop-in class. Little House Activity Center, 800 Middle Ave., Menlo Park. Call 650-326-2025 ext. 222. www.penvol.org/littlehouse/

Meet the iPad This class will cover basic functionality, application use, settings management, helpful features and more in a personal and comfortable setting. It will be taught by Curtis Golden of Seniors Savvy. Wednesdays, April 9-30, 6:30-7:30 p.m. \$60. Little House Activity Center, 800 Middle Ave., Menlo Park. Call 650-326-2025 ext. 222. www.penvol.org/littlehouse

Pastel Plein Air Painting Classes with Jan Prisco The Portola Art Gallery's Jan Prisco will offer weekly pastel plein air painting classes at Allied Arts Guild and other Peninsula locations. Beginning and intermediate pastel painters are welcome. Wednesdays, April 16 through August 1, 1:30-4:15 p.m. \$30/class or \$100/four-class bundle. Allied Arts Guild, 75 Arbor Road, Menlo Park. Call 650-341-9519. www.janprisco.com

Tai Chi with Ben Dineen Tai Chi classes will be held in the Woodside Native Plant Garden, weather permitting. This centuries-old Asian exercise seeks to produce stronger bodies, better balance and a sharper mind. Instructor Ben Dineen invites all ability levels to this 60-minute class. The program is funded by the Friends of Woodside Library. Fridays, April 4-25, 10-11 a.m. Free. Woodside Library, 3140 Woodside Road, Woodside. Call 650-851-0147. www.smcl.org

Clubs/Meetings

Portola Valley Library LEGO Club At club meetings, the library provides the LEGO and DUPLO building blocks for kids and adults to construct with and use their imaginations. April 12, 11 a.m.-12:15 p.m. Free. Portola Valley Library, 765 Portola Road, Portola Valley. Call 650-851-0560. www.smcl.org

Community Events

'Mastering Your Mentoring Skills' A panel discussion will assist inform attendees on mentoring skills to use at work, while volunteering or even with family members. Speakers will include Lisa Yarbrough-Gauthier (vice mayor, EPA), Alex Macintyre (city manager, Menlo Park) and Naomi Chavez Peters (talent development guru, SalesForce.com). April 10, 6:45-9 p.m. Free. Arrillaga Recreation Center, Oak Room, 700 Alma St., Burgess Park, Menlo Park. Call 650-321-0200. thejuniorleague.org

2014 Stanford Night Market The Taiwanese Cultural Society will host its 14th Annual Stanford Night Market in White Memorial Plaza. It will be an evening of food, games and performances put on by various student groups. April 12, 6:30-9 p.m. Free to attend. White Memorial Plaza, 519 Lasuen Mall, Stanford. Call 510-771-7669. stanfordnightmarket.org

Concerts

'Wanderer': Eugene Villanueva and John Churchwell As part of the Shenson Recital Series at Stanford, Eugene Villanueva, baritone, and John Churchwell, piano, will present their program "Wanderer" with selected songs of Schubert, "Songs of Travel" by Vaughan Williams, selected songs of Tosti and American folk songs by Steven Mark Kohn. April 13, 2:30 p.m. \$15 general; \$10 student; free for Stanford students; \$10 senior. Campbell Recital Hall, Braun Music Center, 541 Lasuen Mall, Stanford. music.stanford.edu/Events/calendar.html

Violin and Organ Concert The Gough Duo from Britain — Rachel Gough (violin) and Rupert Gough (organ) — will perform original compositions, as well as classical arrangements. Visit goughduo.co.uk for recordings and bios. April 11, 7:30 p.m. \$20; \$10 senior/student/AGO member. Christ Church Portola Valley, 815 Portola Road, Portola Valley. Call 650-851-0224. ccpvw.org/

Environment

Connecting the Dots 2014: 'The Climate, Energy, Food and Water Nexus' Experts from Stanford will speak about the interactions between the ways humanity uses climate, energy, food, water and other environmental resources. Authors of the Intergovernmental Panel on Climate Change report on impacts, adaptation and vulnerability will take part in the discussion. Registration is required. April 18, 12:30-6:30 p.m. Free; priority given to those affiliated with Stanford. Frances C. Arrillaga Alumni Center, 326 Galvez St., Stanford. tomkat.stanford.edu/ctd/?utm_content=buffer4d66&utm_medium=social&utm_source=twitter.com&utm_campaign=buffer

San Francisquito Watershed Tour Committee for Green Foothills will hold an event exploring the San Francisquito watershed, to be attended by notable speakers from Stanford University, the San Francisquito Joint Powers Authority, Acterra, Stoecker Ecological and Citizens Committee to complete the Refuge. Lunch and transportation will be included. April 12, 8:30-4 p.m. \$25 members; \$35 nonmembers. The Peninsula Conservation Center, 3921 E. Bayshore Road, Palo Alto. Call 650-968-7243 ext. 340. www.greenfoothills.org/ai/tec_event/san-francisquito-watershed-tour/?instance_id=155

Family and Kids

Charlie Hope concert Charlie Hope will perform an interactive and melodic set of music. Children and parents are invited to participate. April 9, 10-10:45 a.m. Free. Woodside Library, 3140 Woodside Road, Woodside. Call 650-851-0147. www.smcl.org

Charlie Hope concert Musician Charlie Hope returns to perform interactive children's music at the library. All ages are welcome. April 14, 4-5 p.m. Free. Atherton Library, 2 Dinkelspiel Station Lane, Atherton. Call 650-328-2422. www.smcl.org

Family Storytime This event for young families will include singing songs and reading books together. April 12, 10:15-10:45 a.m. Free. Portola Valley Library, 765 Portola Road, Portola Valley. Call 650-851-0560. www.smcl.org

Kamishibai: Japanese story card theater This event will include a performance of Japanese paper card story theater, or Kamishibai. In addition to hearing Japanese folktales in English, there will be a craft activity and Japanese cookies to snack on. April 18, 2-3 p.m. Free. Woodside Library, 3140 Woodside Road, Woodside. Call 650-851-0147. www.smcl.org

Menlo Park Egg Hunt The City of Menlo Park, the Menlo Park Firefighters' Association and the Menlo Park Fire District will hold its annual Egg Hunt at Burgess Park. The Easter bunny will arrive at 10 a.m. for pictures; the egg hunt will start at 10:30 a.m. Other attractions will include bounce houses, crafts and a jelly bean guess. April 19, 10 a.m.-noon. Free. Burgess Park, 701 Laurel St., Menlo Park.

Submitting items for the Calendar

Submit information online. Go to TheAlmanacOnline.com and on the green navigation bar on the left, click on "Calendar Event." That will take you to the Palo Alto Online Master Community Calendar page with a form to enter your information. If the event is of interest to a large number of people, also e-mail a press release to Editor@AlmanacNews.com.

Painting with fire

By Renee Batti

Almanac News Editor

An exhibition of works by Atherton artist Mirang Wonne opens this week at the de Saisset Museum at Santa Clara University, with an opening reception on Wednesday, April 9. Ms. Wonne's work is "rarely as it seems," according to the exhibition brochure — and indeed, it would be difficult to perceive from afar that the large silky sheets displayed in her installation are in fact thin wire mesh screens, or that the fluid, evocative images on the screens are created with a blowtorch.

The choice of that unlikely artistic "brush" gives the exhibition its name: Fire Script.

Born in Korea, Ms. Wonne studied art first in her native country, then in Paris. She received a doctorate in aesthetics from the Sorbonne before moving to New York, and moved to Atherton in 1984.

As she evolved as an artist, she traded traditional canvas and oil paints for more industrial media, including metals and acid, to create images largely inspired by nature. She works from a studio at the Hunter's Point Shipyard in San Francisco.

Ms. Wonne's work has been shown in exhibits around the world. Her stainless steel mesh screens have been exhibited at the Asian Art Museum in San Francisco, the Triton Museum of Art in Santa Clara, Sung-Gok Museum in Seoul, and In-Chon Emigrant Museum in Korea.

The de Saisset exhibit opens Thursday, April 10, and runs through June 15. Gallery hours are



Photo courtesy of Mirang Wonne

Mirang Wonne at work in her studio.

Tuesday through Sunday from 11 a.m. to 4 p.m. Admission is free.

A preview and reception for museum members is set for 6 to 7 p.m. April 9; a reception from 7 to 8:30 p.m. is open to the public.

The museum is at 500 El Camino Real in Santa Clara, on the university campus.

Menlo Park Tennis Festival This festival will feature special demonstrations from tennis professionals, music, prizes and other activities for all levels. It is open to all players ages 6-12 and their family members. April 19, 11 a.m.-1 p.m. \$10 per player. Burgess Park Tennis Courts, 701 Laurel St., Menlo Park. Call 650-330-2232. www.menloswim.com/tennis-festival

Playing with Blocks Party Woodside Library invites children to come build and learn with blocks. Playing with blocks develops children's hand-eye coordination as well as math and science skills. April 12, 10 a.m.-noon. Free. Woodside Library, 3140 Woodside Road, Woodside. Call 650-851-0147. www.smcl.org

Film

'All is Lost' Screening For action movie night, the Atherton Library will present "All is Lost," a film starring Robert Redford about ingenuity and resilience. Light refreshments will be provided. The movie is rated PG-13. April 11, 7-9 p.m. Free. Atherton Library, 2 Dinkelspiel Station Lane, Atherton. Call 650-328-2422. www.facebook.com/athertonlibrary

Outdoors

Birds of Bedwell Bayfront Park Experienced birders will help others enjoy close-up views of different birds: lingering winter visitors, migrating birds stopping to rest and refuel, or year-round residents. Bring binoculars or look through others'. April 12, 10:30 a.m.-12:30 p.m. Free. Bedwell Bayfront Park, end of Marsh Road, at Bayfront Expressway, Menlo Park. Call 650-839-1523. www.friendsofbayfrontpark.org/

Lectures & Talks

'16 MM Movies - Then and Now' Local film historian Jim Chase will take listeners back to the era of the projector and the birth of America's motion picture era. An exemplary film from the era will be shown, and Chase will discuss the legacy of 16 mm film. April 15, 1:30-2:30 p.m. Free for members; \$3 nonmembers. Little House Activity Center, 800 Middle Ave., Menlo Park. Call 650-326-2025 ext. 222. www.penvol.org/littlehouse

'Medical Mission to the Philippines' talk

Chris Castillo will present an informal presentation entitled "Medical Mission to the Philippines." A simple soup supper will follow the talk as part of the church's "Thursdays in Lent" series. Please RSVP for the supper. April 10, 6-7:30 p.m. Free. Ladera Community Church, 3300 Alpine Road, Portola Valley. Call 650-854-5481. www.ladera.org

'Rev Up Your Biz Dev Mojo' Led by expert Chip Doyle, this evening will teach effective strategies and practice them in high-energy breakout sessions with peers from Women in Consulting. April 17, 6-8:30 p.m. \$45-\$65. Quadrus Conference Center, 2400 Sand Hill Road, Menlo Park. Call 408-266-9658 ext. 11. www.womeninconsulting.org/site/apps/nlnet/content2.aspx?c=jhLOK0PELofF&b=8023581&ct=13727263

Author Ann Brashares Ann Brashares, author of "The Sisterhood of the Traveling Pants" series, will discuss and sign her new book, "The Here and Now." The story follows 17-year-old Preena James, who emigrated to New York when she was 12 — not from a different country, but a different time. April 11, 7 p.m. Free. Kepler's Books, 1010 El Camino Real, Menlo Park. Call 650-324-4321. www.keplers.com/event/ya-ann-brashares

Author Ian Morris Historian, archaeologist and Stanford Classics professor Ian Morris will discuss and sign his new book, "War! What Is It Good For?: Conflict and the Progress of Civilization from Primates to Robots." His work tells the story of 15,000 years of war, going beyond the battles and brutality to reveal what war has done to and for the world. April 16, 7:30 p.m. Free. Kepler's Books, 1010 El Camino Real, Menlo Park. Call 650-324-4321. www.keplers.com/event/ian-morris-0

Author John L'Heureux John L'Heureux will give a talk and book signing for his newest book, "The Medici Boy." The hardcover delivers a narrative of the creative genius, Donatello, at his artistic height. L'Heureux has taught at Georgetown, Tufts, and Harvard, as well as at Stanford for more than 35 years. April 9, 7:30 p.m. Free. Kepler's Books, 1010 El Camino Real, Menlo Park. Call 650-324-4321. www.keplers.com

Conversation with Tony Kushner Stanford University will host a conversation between professor Peggy Phelan and Tony Kushner. Kushner is the award-winning author of such plays and screenplays as "Angels in America," "Lincoln," "Caroline or Change" and "Munich." April 16, 6-7 p.m. Free (open to public). Pigott Theater, Memorial Auditorium Complex, 551 Serra Mall, Stanford. taps.stanford.edu

Youth event: Author Laini Taylor A National Book Award finalist, author Laini Taylor will share the conclusion to her Daughter of Smoke & Bone trilogy, "Dreams of Gods & Monsters." There will be prizes, photo opportunities and a small gallery of fan art. April 14, 7 p.m. Free. Kepler's Books, 1010 El Camino Real, Menlo Park. Call 650-324-4321. www.keplers.com/event/ya-laini-taylor

Youth event: Author Rachel Hawkins Rachel Hawkins, author of the Hex Hall series, returns to talk about her new novel, "Rebel Belle," which combines adventure, romance and Southern charm. April 10, 7 p.m. Free. Kepler's Books, 1010 El Camino Real, Menlo Park. Call 650-324-4321. www.keplers.com/event/ya-rachel-hawkins

Youth event: Authors Kelley Armstrong and Veronica Rossi Kelley Armstrong will speak about her first book in the Age of Legends trilogy, "The Sea of Shadows." She will be in conversation with Veronica Rossi, who recently finished her own Under the Never Sky trilogy with "Into the Still Blue." April 13, 3 p.m. Free. Kepler's Books, 1010 El Camino Real, Menlo Park. Call 650-324-4321. www.keplers.com/event/ya-kelley-armstrong-and-veronica-rossi-0

For all listings

This Calendar contains partial listings of community events. To see all listings, go to TheAlmanacOnline.com and on the green navigation bar on the left, click on "Community Calendar."

INCOMPARABLE WOODSIDE ESTATE

OPEN SUNDAY 1:00 – 4:00 PM



1000 MOUNTAIN HOME ROAD, WOODSIDE

Welcome to this incomparable estate located in the beautiful Mountain Home neighborhood in Woodside. The stately residence was originally built in 1978 but has been expanded and completely revitalized by the current owners. Set on approximately 3.88 landscaped acres, this wonderful Traditional home offers the twin luxuries of abundant space and complete privacy.

- Four bedrooms, four full baths and three half baths in the main residence
- Large living room, formal dining room, comfortable family room
- Paneled library and billiards room with walk-in wet bar
- Updated kitchen expanded by a sunny breakfast area
- Home gym with sauna and full bath with steam shower
- Four-car garage with built-in storage work bench and full attic
- One-bedroom, one-bath guest cottage with kitchen and great room
- Pool and pool house with full kitchen
- Expansive terraces and lawns surrounded by magnificent gardens
- Approximately 3.88 acres
- Award-winning Portola Valley schools
- Approximate square footage:*

House:	5,906*
Basement:	533*
Guest house/pool house/gym.....	2,026*
Garage:	1,035*
Total:	9,500*

OFFERED AT \$6,995,000

VIRTUAL TOUR AT www.1000MountainHome.com

*Square footage per architectural plans

This information was supplied by Seller and/or other sources. Broker believes this information to be correct but has not verified this information and assumes no legal responsibility for its accuracy. Buyers should investigate these issues to their own satisfaction. Information deemed reliable, but not guaranteed. If your home is currently listed for sale, this is not a solicitation of that listing.

HUGH CORNISH

650.566.5353

hcornish@cbnorcal.com

CalBRE# 00912143



NATALIE COMARTIN

650.380.3122

natalie.comartin@cbnorcal.com

CalBRE# 01484129

GULLIXSON

WEST ATHERTON



PRIME CUL-DE-SAC LOCATION IN WEST ATHERTON OFFERED AT \$9,400,000

THREE-LEVEL HOME | CAPE DUTCH STYLE ARCHITECTURE | 5 BD/ 6.5-BA MAIN HOME | FULLY EQUIPPED 1-BED GUEST HOUSE
1+/- AC | LOGGIA WITH FIREPLACE | LAP POOL WITH SPA | FLEXIBLE LOWER LEVEL WITH EXERCISE AREA, MEDIA ROOM, WET BAR
AND FULL BATH | STORAGE ROOM WITH WINE CELLAR POTENTIAL | LAS LOMITAS SCHOOLS



THE GULLIXSONS HAVE ACHIEVED A TOTAL SALES VOLUME OF OVER \$3.1 BILLION IN REAL ESTATE SALES AND HAVE THE #1 MARKET SHARE IN ATHERTON; IN 2012 THEY WERE RANKED THE #4 TEAM IN THE NATION BY THE WALL STREET JOURNAL



**MARY & BRENT
GULLIXSON**

Mary: 650.888.0860 • mary@apr.com

Brent: 650.888.4898 • brentg@apr.com

gullixson.com

ALAIN PINEL
REALTORS

MARY: License #00373961 | BRENT: Licence #01329216 Information deemed reliable, but not guaranteed. Square footage and/or acreage information contained herein has been received from seller, existing reports, appraisals, public records and/or other sources deemed reliable. However, neither seller nor listing agent has verified this information. If this information is important to buyer in determining whether to buy or to purchase price, buyer should conduct buyer's own investigation.