



Menlo Park OKs downtown
housing-commercial complex | Page 3

The Almanac

THE HOMETOWN NEWSPAPER FOR MENLO PARK, ATHERTON, PORTOLA VALLEY AND WOODSIDE

AUGUST 26, 2015 | VOL. 50 NO. 51



WWW.THEALMANACONLINE.COM

BACK TO SCHOOL

Stories on local schools
start on Page 5



Aniyah, 8, guides her little sister Graciela on the first day of school at Las Lomas Elementary School on Aug. 20. (Photo by Michelle Le/The Almanac.)

COME ON IN



ATHERTON \$19,800,000

95 Atherton Avenue | 5 bd/6+ba
Mary & Brent Gullixson | 650.462.1111



WOODSIDE \$3,799,000

65 Roan Place | 4bd/3ba
Stephanie Nash | 650.529.1111



MENLO PARK \$3,295,000

1045 Atkinson Lane | 4 bd/4 ba
M. Corman/M. Montoya | 650.462.1111



PESCADERO \$1,298,000

3980 Pescadero Creek Road | 3bd/2.5ba
K. Bird/S. Hayes | 650.529.1111



Graphic courtesy city of Menlo Park

This drawing by the Dahlin Group shows the view of the building from El Camino Real. The project, at 1283 and 1295 El Camino Real, includes 15 units of corporate housing and about 2,000 square feet of retail space.

Menlo Park OKs downtown housing-commercial complex

By Barbara Wood
Almanac Staff Writer

Menlo Park's Planning Commission has approved the first mixed-use housing and commercial project under the downtown-El Camino Real specific plan since the plan's 2012 adoption. Pinnacle Group plans 15 corporate apartments and about 2,000 square feet of commercial space in three-story buildings on the west side of El Camino between Valparaiso and Oak Grove avenues.

Currently, the 1283 and 1295 El Camino Real properties house a nail salon, a dance supply store and offices in one-story buildings.

Mohammad Mortazavi, owner of Pinnacle Group Corp., said he plans to fully furnish the two- and three-bedroom units and lease them for about \$10,000 a month as corporate rentals. Because there are only eight parking spots for the commercial space, the space can be used for retail or non-medical offices, but not for a restaurant or cafe. Mr. Mortazavi said Pinnacle

may move into the building as may the project's architects, Dahlin Group.

Because the units will be rentals, not condominiums, the project does not have to provide below-market-rate units, according to the staff report.

The owner plans to furnish the two- and three-bedroom units and lease them for about \$10,000 a month as corporate rentals.

Most of the commissioners at the Aug. 17 meeting were enthusiastic about the plan, and the vote for approval was 6-1, with only Commissioner Katie Ferrick voting no.

"I'm not a big fan of the architecture," Ms. Ferrick said. "It doesn't stop me from supporting the project as a whole," she said. "Overall, I think it's a really great project."

Her vote, she said, was partially in protest of the com-

mission's open-ended approval, which allows some architectural changes that commissioners had mentioned. According to the wording approved by the commissioners, those changes will not come back to the commission unless a commissioner objects after they see the revised plans.

Commissioner Susan Goodhue said the project will "greatly enhance the feel of El Camino in Menlo Park." When a large mixed-use project on the opposite side of El Camino is built, "I think there will be some there, there," she said.

Menlo Park Senior Planner Thomas Rogers said only a few other projects have been approved in the plan area, including renovations and expansions at the Marriott Residence Inn at 555 Glenwood, and the Mermaid Inn at 727 El Camino Real. The only other new building to have won approval is a four-unit residential project at 612 College Ave., approved in September 2014 and now undergoing building permit review, Mr. Rogers said. ▣

Lori Wilkinson

August 6, 1961 – August 18, 2015

Lori Mazza Wilkinson, age 54, passed away peacefully with her family by her side on August 18th. Lori was a beautiful person, loving mother and devoted wife to her husband of 21 years, Kevin Wilkinson and sons Andrew age 19 and Patrick age 17.

She was well known in the local community from her many years living in Woodside. She was born in Bakersfield in 1961 and after college and her marriage to Kevin, she and her family moved to the Woodside Glens in 1995.

She will be remembered as an incredibly elegant and beautiful woman, a fantastic cook, amazing friend, and a tireless volunteer at Woodside School and in several local nonprofits including The Peninsula Youth Sailing Foundation and South Beach Yacht Club Youth Sailing.

She was also a successful business woman, sonographic medical technician and an instructor of diagnostic sonography at Foothill College.

Lori will be greatly missed by all, but her loving memory will live in our hearts forever.

A memorial service will be held on Saturday August 29th at 12 noon at The Gates of Heaven Cemetery, 22555 Cristo Rey Drive, Los Altos, Ca 94024

In lieu of flowers, the family has requested donations to The Peninsula Youth Sailing Foundation a 501 (c) 3 nonprofit located at the port of Redwood City. www.pysf.us



PAID OBITUARY

We're here to help... 24/7

whenever
and
wherever
you
need
us.



Care Indeed is here to provide you or your loved one with compassionate and professional service. We offer assistance with personal care, help with mobility and simple exercises, companionship, medication reminders, meal preparation, light housekeeping, shopping, and errands.

Our respectful, caring and highly skilled Caregivers are a vital health care resource; they are trained to document activities or services performed in a timely, specific, accurate and complete manner.

Care Indeed
YOUR 24/7 HOME CARE SPECIALIST

(650) 328-1001
www.careindeed.com
890 Santa Cruz Avenue
Menlo Park, CA 94025

CALLING ON THE ALMANAC

Newsroom: **223-6525**
Newsroom fax: **223-7525**
Advertising: **854-2626**
Advertising fax: **223-7570**
Classified ads: **854-0858**

■ E-mail news, information, obituaries and photos (with captions) to:
editor@AlmanacNews.com
■ E-mail letters to the editor to:
letters@AlmanacNews.com

THE ALMANAC (ISSN 1097-3095 and USPS 459370) is published every Wednesday by Embarcadero Media, 3525 Alameda de las Pulgas, Menlo Park, CA 94025-6558. Periodicals Postage Paid at Menlo Park, CA and at additional mailing offices. Adjudicated a newspaper of general circulation for San Mateo County, The Almanac is delivered free to homes in Menlo Park, Atherton, Portola Valley and Woodside. Subscriptions for \$60 per year or \$100 per 2 years are welcome. POSTMASTER: Send address changes to the Almanac, 3525 Alameda de las Pulgas, Menlo Park, CA 94025-6558. Copyright ©2014 by Embarcadero Media, All rights reserved. Reproduction without permission is strictly prohibited.

To request free delivery, or stop delivery, of The Almanac in zip code 94025, 94027, 94028 and the Woodside portion of 94062, call **854-2626**.

Coming Soon...

Weekend Express

**Your weekly
email with tips
and insights
about hot events
and cool activities**



- Music
- Eating out
- Movies
- Fun and free
- Art exhibits
- Theater
- Lectures and learning

The first step in planning your weekend starts here

EAT

Restaurant reviews and special deals

SEE

Art exhibits, music, movies, lectures

PLAY

Local events, outdoors, just for fun

Presented by

The **Almanac**

Local News

MENLO PARK | AHERTON | WOODSIDE | PORTOLA VALLEY

New principal, construction at M-A High

By Dave Boyce
Almanac Staff Writer

As fall classes resume at Menlo-Atherton High School, a new principal is at the helm: Simone Rick-Kennel. Since November 2014, she was co-principal with Matthew Zito as he made a transition to chief facilities officer for the Sequoia Union High School District.



Also new this year at M-A is a large hole in the ground where the G wing used to be. A two-story Building G is going in there, set to open in the spring of 2017, with 21 classrooms, including some interconnected with spaces for shared projects, and a courtyard. A temporary G wing of portable buildings is located on the athletics field behind the I wing.

Multi-story classroom buildings are unprecedented at M-A, but the campus is built out and the district is increasing capacity at all four major high schools. Projections show a surge in enrollment, coming mainly from schools in Menlo Park, Belmont and San Carlos, and enrollment growth of 22 percent — to about 2,600 students — at M-A by the 2020-21 school year.

Staff changes

Although she's the new principal, Ms. Rick-Kennel, 46, has been at M-A for 13 years. Coming from South San Francisco, she taught special education at M-A

for five years, including several as department head. She was dean of students, and administrative vice principal for eight years. She has a bachelor's degree in English from the University of California at Berkeley and a master's degree in special education from San Francisco State University.

Replacing Ms. Rick-Kennel as administrative vice principal is J.C. Farr, most recently an assistant principal at Castro Valley High School.

His specialties include coordinating professional development, interventions, after-school programs, and overseeing parent-education and advisory groups. Mr. Farr has a bachelor's degree in political science, a master's in educational leadership, both from UC Berkeley, and teaching credentials in social science and physical education.

With the retirement of Alice Kleeman after 20 years as college adviser at M-A, Mai Lien Nguyen, who most recently held that position at Mountain View High School, is taking over. Ms. Nguyen has a bachelor's degree in history and East Asian studies from Brown University, a master's in education from Stanford University, and a certificate in college admissions and career planning from the UC Berkeley Extension.

M-A has hired two guid-



Photos by Michelle Le/The Almanac

A construction crew works on the site where a two-story, 21-classroom building will be erected on the Menlo-Atherton High School campus.



Principal
Simone
Rick-Kennel

ance counselors, bringing the counselor-to-student ratio to about 1:280, according to Ms. Rick-Kennel's data.

There are 13 new teachers this year, one each in drama, English, Spanish, math, special education, and yearbook preparation; three in social studies; and four in science. Some are replacing retired teachers and others reflect enrollment growth, Ms. Rick-Kennel said.

New course

Students interested in sports will have an opportunity to deepen that interest by studying the running of an athletic

program.

The course in sports leadership will include material on game setup and cleanup, statistics, running the clocks, first aid, working with trainers and coaches, handling social media, video production, broadcasting and preparing game summaries for media outlets, said co-athletic director and course designer Paul Snow.

Ravenswood district

This is also M-A's first year as the home high school for the Ravenswood City Elementary School District, which serves Belle Haven and East Palo Alto. This change is not expected to increase

enrollment, officials say, because M-A households north of 8th Avenue in North Fair Oaks have been reassigned to Sequoia High.

"If anything, there's been a very positive impact," Ms. Rick-Kennel said of the inclusion of Ravenswood students. "I see it as a very positive relationship moving forward."

About 80 Ravenswood eighth-graders attended a retreat in November to improve study skills, and this summer's M-A's Honors Institute included 60 students, most from Ravenswood, to prepare for geometry, biology and honors English classes in the fall, she said. ■

Woodside High prepares for 19 percent enrollment growth

By Dave Boyce
Almanac Staff Writer

The 2015-16 school year will be well along at Woodside High School by the time construction crews break ground for a new two-story, 10-classroom building between the gym and the softball fields. Inside the new building will be a chemistry lab and new classrooms for engineering and robotics, Principal Diane Burbank said.



The school is facing predicted

enrollment growth of about 19 percent — to about 2,100 students — by the 2020-21 school year. Because the Woodside campus is, like all four major campuses in the Sequoia Union High School District, built-out, classroom expansions will tend to be in the form of two-story buildings, district officials have said.

The new year will see improvements in vehicle traffic flow, including more organized procedures for boarding buses, and better traffic flow for student parking and parking near the football field, Ms. Burbank said.

Woodside will be raising the number of seats in its computer science program by 67

percent — to 100 from 60. For the fourth year, volunteer software programming professionals will come to the classroom to

Woodside will be raising the number of seats in its computer science program.

help teach. Participants include employees of Microsoft, Google and Twitter, Ms. Burbank said.

According to its website, the TEALS program — Technology Education And Literacy in Schools — recruits, trains, men-

tors and places high-tech professionals in team-teaching situations in high school classrooms.

At Woodside, the professionals will be working with math teacher Josh Rubin, who teaches introductory computer science, and with math and computer science teacher Eric Ettlin, who teaches advanced-placement computer science. A class on mobile apps is planned for the 2016-17 school year.

According to the website code.org, which is cited by TEALS, the U.S. economy will need 1.4 million computer science graduates by 2020, but is on track to graduate just 400,000.

Woodside's athletic director

See **WOODSIDE HIGH**, page 7



Are you getting the
service you deserve?
We answer our
phones.

Serving the community for over 26 years!

CHARLIE PORTER

Farmers® Agency
License # 0773991
671-A Oak Grove Ave, Menlo Park
650-327-1313
cporter2@farmersagent.com



Photo by Barbara Wood/The Almanac

It may be hard to imagine right now, but by mid-September two classes of preschoolers will be meeting in this building on the campus of Woodside Elementary School. The photo was taken Aug. 20.

Living Well With And Beyond Cancer Celebration

Saturday, August 29, 2015 • 11am – 3pm

Li Ka Shing Alumni Lawn • 291 Campus Dr., Palo Alto, CA 94305

RSVP Today! shc.is/livingwell

WHO DO YOU KNOW THAT'S BEEN TOUCHED BY CANCER?

Connect. Learn. Share.

You are invited to join us August 29, 2015

Event Highlights

- Connect with your physicians and health care team
- Ask Stanford experts about ways to live well
- Learn about Stanford services
- Visit community resource tables
- Live music
- Lunch
- Free parking
- Children's activities
- Reiki therapy
- Chair massage

For More Information

Please visit us online at
<http://shc.is/livingwell>, by email:
livingwell@stanfordhealthcare.org,
or give us a call at 650.498.3323.



Connect

Connect

Connect

Connect

Connect

Connect

Connect

Connect

Preschool changes more than its building

By Barbara Wood
Almanac Staff Writer

While as many as 60 construction workers swarmed over Woodside Elementary School's campus each day last week, it was a little hard to believe the school would be ready to welcome more than 400 students by its Aug. 25 opening day of school.

The first of the three major projects underway on the school grounds this summer is a new two-classroom building for the tuition-based preschool that operates at Woodside.

The preschool is scheduled for completion by Sept. 15. A new design lab is to be done by Sept. 29 and the new multi-purpose auditorium by March 15. New roofs and underground utilities and drainage improvements were completed over the summer.

Woodside Superintendent Beth Polito said the preschool will have far more than its brand-new building to be proud of.

The district has been working to improve the preschool, which has about 44 students in two classes, for the past four years, the superintendent said.

One of the points of pride is the preschool's "stellar staff," she said. Tom Limbert, who is the preschool's director, will be going into his third year at the school. Mr. Limbert is a parenting coach, a published

author and was head teacher at Stanford's Bing Nursery School from 1996 to 2006.

Mr. Limbert is great at helping parents "with the hard decisions that you have to make as a parent," Superintendent Polito said. "He's a really great addition to our administrative team."

When Mr. Limbert came on board, he helped the district examine the preschool's program, including by visits to other area preschools, such as Bing, T'enna Preschool at the Jewish Community Center in Palo Alto, and some Montessori preschools.

"We did our research on what is best practice in early childhood education," Superintendent Polito said. The research paid off, she said, and this is the third year the school has been full with a wait list. She said 90 percent of the families with children in the school live in the Woodside school district.

What the preschool ended up with is a "balance between academic readiness and a constructivist approach," which means allowing children to learn by doing things, she said. "We're still very much a play-based program" Superintendent Polito said.

Having the preschool on the campus is good for the school as well as the families that take part in it, she said. Because the preschool program is coordinated with the school's kindergarten program, children are prepared to succeed in school, Superintendent Polito said.

See **PRESCHOOL**, page 7

Las Lomitas prepares for growth

By Barbara Wood
Almanac Staff Writer

The Las Lomitas School District, home to La Entrada (grades 4-8) and Las Lomitas (kindergarten to grade 3), has been busy over the summer planning for the expansion of its two school campuses.

At La Entrada, where a two-story building will eventually be constructed, three portable classrooms were moved onto the campus over the summer. The portables will allow classes to continue uninterrupted when construction begins, which will probably not be for at least 18 months, said Eric Holm, director of bond projects for the district.

In addition, the district has been trying out modular classroom furniture that can quickly be reconfigured to suit the teacher's lesson plan or activity, Mr. Holm said. One teacher who tried the flexible furniture last year had six room setups that students could reset in less than a minute.

Last year, four La Entrada classrooms tried out the new furniture: three seventh-grade classes and one fifth-grade class. This year two fourth-grade classrooms will also get the flexible furniture.



Photo by Michelle Le/The Almanac

Las Lomitas Elementary School's new principal, Alain Camou, greets siblings Alexandra, left, and twins Anastasia and Michael as their father Alex watches on the first day of school on Aug. 20.

New construction

Next on the agenda for the district is detailed planning for the changes on each campus.

La Entrada will get a two-story, 22-classroom building, a reconfigured blacktop area, and a covered lunch area added.

Las Lomitas will get a new kindergarten area, updated parking and drop-off areas, second-story classroom spaces, and a covered lunch area.

To help with the planning, the district has conducted traffic studies at La Entrada and surveys at both sites to learn how students get to and from

school. Both construction sites have been surveyed and the district is beginning work on CEQA (California Environmental Quality Act) studies for the new construction, Mr. Holm said.

"There will be many more meetings as the plans start to take shape," Mr. Holm said, including PTA and community meetings as well as updates on the district's website.

The construction will be paid for by the sale of \$60 million in bonds approved by the voters in November 2013.

Go to tinyurl.com/LL-construct to see construction updates. ▣

WOODSIDE HIGH

continued from page 5

of taking calculus.

Woodside has six new teachers this year.

English teacher Rachel Bycer has a bachelor's degree in journalism and international studies from Medill School of Journalism at Northwestern University. Her teaching experience includes the humanities, civic leadership, video storytelling and photojournalism in San Diego. She also taught Judaic studies and advanced Hebrew in La Jolla.

Special education teacher Kumar Chaudhari has a bachelor's degree in geography from Pennsylvania State Uni-

versity and a master's in special education from Notre Dame de Namur in Belmont. His teaching experience includes language Arts at Charles Armstrong School in Belmont and the Burlingame Intermediate School.

Special education teacher Juan Gabe has a bachelor's degree in English literature from San Francisco State University and has been assisting in Woodside High classrooms as an instructional aide and summer school assistant to the principal.

Special education teacher Anna Roger has bachelor's degree in social work from Skidmore College and a master's in social work from Boston College, with a concentration

in mental health. She has been a mental health service case-worker.

Mandarin teacher Jing Xu has a bachelor's degree in English from Huainan University in Anhui, China, and a master's in teacher education from Stanford University. She's been student-teaching Chinese at Cupertino High School for the past year.

Social science teacher David Hartford has a bachelor's degree in political science and Japanese studies from Adrian College in Michigan, and a master's in teaching from Santa Clara University. His experience includes teaching high school English in Japan, and student teaching at Monte Vista High School in Cupertino. ▣

PRESCHOOL

continued from page 6

Parents also get to know parents of children their children may be going to school with through eighth grade. "It's a bonding experience," Superintendent Polito said. "You really need

each other at that stage in life."

In addition, the school's obligation to provide support services for children as young as 3 who may need additional resources is made easier if children are already on the campus, she said.

One thing the changes in the

preschool did not mean is a big increase in tuition. Tuition went up 5 percent last year, Superintendent Polito said, but it was the first increase in eight years.

"We are still contributing to the district budget," she said, "not much, but at least we're covering all our costs." ▣

REAL ESTATE Q&A

by Monica Corman



Capital Gains Taxes on Real Estate

Dear Monica: I would like to sell my home, which I have owned many years, but just found out that I will be taxed on gain over a certain amount. I thought I could roll it into another primary residence. When did this rule change?

John C.

Dear John: Many homeowners are not aware of this change in the law, which happened in 1997. Prior to that time one could exclude gain on a primary residence by "rolling" it into another more expensive residence within two years. If you were over 55 years old, you could take a one-time exemption of \$125,000. But this was changed to a more flexible system. The new law allowed a homeowner to exclude \$250,000 (\$500,000 for a couple)

of gain and pay capital gains tax on the remaining gain. And you could repeat this every two years. For most parts of the country, this exclusion amount was more than the gain so no tax was due. In California, however, owners who have owned their homes for a long time, often have considerable gain above the exclusion amount.

If you have just learned of this change, you haven't sold a home since prior to 1997 and home values have risen substantially in California since that time. You will most likely have considerable gain. There are strategies you can use to defer some of this tax but these involve a couple of moves. Consult your tax advisor for details and to know what would work best for you.

For answers to any questions you may have on real estate, you may e-mail me at mcorman@apr.com or call 462-1111, Alain Pinel Realtors. I also offer a free market analysis of your property. www.MonicaCorman.com

WOODSIDE*PORTOLA VALLEY FIRE PROTECTION FOUNDATION



3RD ALARM CHILI COOK OFF & BBQ

SEPT 27TH 2015 3PM TO 7PM

LIVE AUCTION • AMAZING RAFFLE • SCULPTURE TOURS
LIVE MUSIC • KIDS GAMES • FIREFIGHTER DEMOS

\$35.00 ADULTS * \$15.00 KIDS UNDER 12

LIMITED TICKETS AVAILABLE • NO TICKETS SOLD AT EVENT • PRE-REGISTRATION ONLY

RUNNYMEDE FARM • 980 RUNNYMEDE WOODSIDE, CA

VISIT OUR WEBSITE FOR MORE INFORMATION
WWW.FIREDISTRICTFOUNDATION.ORG



46 Fair Oaks Lane, Atherton Offered at \$3,488,000

Gated Craftsman Home, Beautifully Restored

Flaunting period details, this 3 bedroom, 2 bathroom Craftsman-style home of 2,680 sq. ft. (per county) covers a lot of 0.62 acres (per county). Two gates open to a semi-circular driveway, leading to this home adorned with 10-foot coved ceilings, white oak floors, antique fixtures, and picture molding. Pocket doors open to a formal living room with a fireplace and a formal dining room with a bronze stove. The elegantly remodeled kitchen adjoins a butler's pantry, a walk-in pantry, and a light-filled breakfast room. Three beautiful bedrooms include the master suite, which features two closets, a sunroom, and a newly remodeled bathroom. These gorgeous grounds enjoy large outdoor entertainment areas, plus new landscaping, a fountain, rosebushes, vegetable planters, and a detached garage. Other highlights include an updated hall bathroom and a lower-level bonus room. Walking distance from Caltrain, the home is also steps from Holbrook-Palmer Park and the Atherton Library. Excellent nearby schools like Encinal Elementary (API 930), Hillview Middle (API 950), and Menlo-Atherton High (buyer to verify eligibility).

For video tour & more photos, please visit:
www.46FairOaks.com



Ken DeLeon
CalBRE #01342140



Michael Repka
CalBRE #01854880



OPEN HOUSE

Sunday, 1:30 - 4:30 pm



650.488.7325 | info@deleonrealty.com | www.deleonrealty.com | CalBRE #01903224



54 West Summit Drive, Emerald Hills Offered at \$2,198,000

Rich Amenities Inside Posh Home

Terrific craftsmanship, high-end amenities, and luxurious spaces await within this 4 bedroom, 3 bathroom home of 2,760 sq. ft. (per county) that sits on a lot of 10,230 sq. ft. (per county). Fine features like elaborate millwork and oak floors enhance the open living areas, which include a living room with window seating, a dining room with a coffered ceiling, and a family room that adjoins the kitchen and the breakfast area. Granite countertops and Viking appliances refine the gourmet island kitchen, and a bedroom on the main level may serve as a home office. Three more large bedrooms are upstairs, including the dreamy master suite with its opulent, stone-trimmed bathroom. The property also features an attached two-car garage, and a rear deck overlooking the large backyard. Other highlights include a central vacuum system, two fireplaces, and a finished shed. Here, you will be near Interstate 280, local shopping, and numerous parks and natural preserves. Great nearby schools include Clifford School and Woodside High (buyer to verify eligibility).

For video tour & more photos, please visit:
www.54WestSummit.com



Ken DeLeon
CalBRE #01342140



Michael Repka
CalBRE #01854880



OPEN HOUSE

Sunday
1:30 - 4:30 pm



COCKTAILS & Couture

EXECUTIVE DIRECTOR
Michele Sharkey

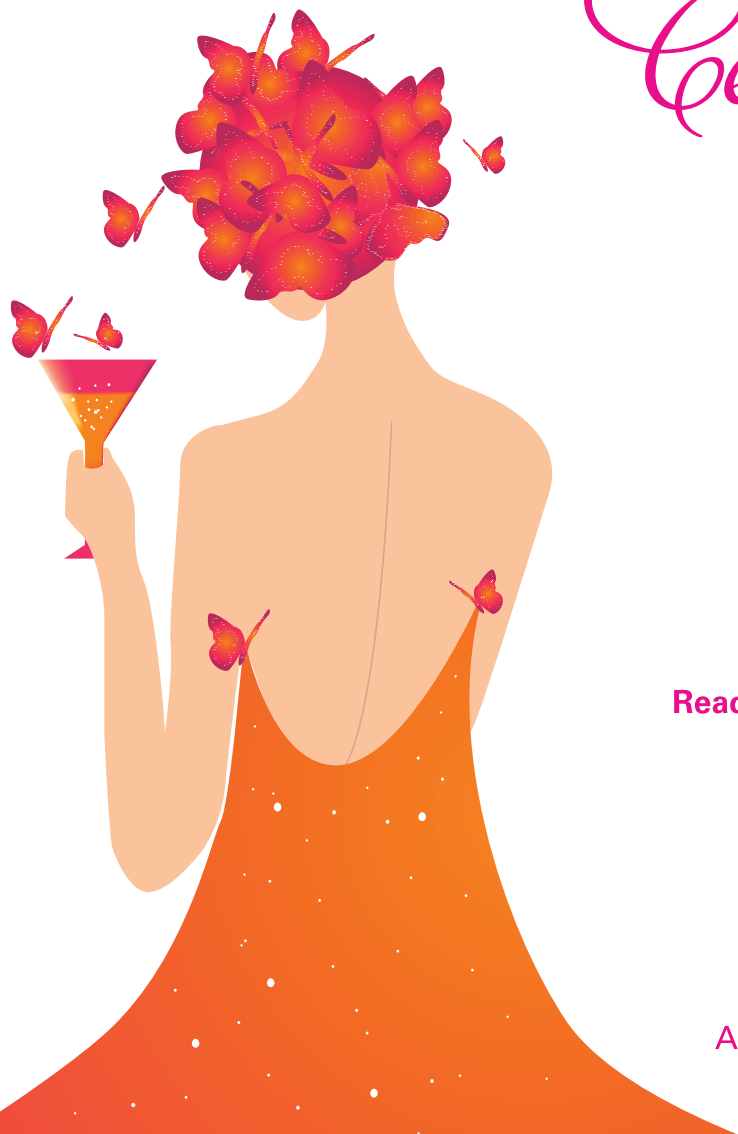
EVENT CO-CHAIRS
Bella Babot &
Elizabeth Clifton

EVENT FASHION CHAIR
Jennifer Bressie

This signature event will bring together high fashion, epicurean delights and bites, trend setting mixology bars where our guests will enjoy premium cocktails, California wineries, a "Spa Tent" and "VIP Tent" featuring Champagne and Hog Island Oysters!

For more information about the event, contact Bella Babot at BellaB@49ersAcademy.org

A benefit for the students of the



Celebrate girl's night out in style!

September 9, 2015
Luxurious Private Estate • Hillsborough

5:00PM VIP Couture Ticket Entry
5:30PM Cocktail Ticket Entry
8:30PM Event finale with coffee & dessert bar

RESERVE YOUR TICKETS TODAY!
www.cocktailsandcoutureforacause.com

Ready to be spoiled? Indulge yourself with the ultimate girl's night out.

The San Francisco 49ers Academy is pleased to announce our Annual "girlfriend event" where women come together to celebrate, sip, shop, savor and embrace the empowerment of an event designed by women for women!

Wilkes Bashford Fashion Show • Boutique Marketplace
Culinary Creations & Stations • Cocktail & Wine Bars
And...our community leader volunteers, the men who are there to pamper you—the Cocktail Crew! • And so many more!



Thank You to our Sponsors



~ CULINARY, WINE, & COCKTAIL PARTNERS ~

Austin Cocktails	Farallon Restaurant	Hult's Restaurant	Pinxs Catering
Avenir Restaurant Group - Milagros	Fernwood Cellars	Kitchit Tonight	Pizzeria Delfina
Big Ed's BBQ	Harvey's Gourmet Mini Donuts	L'Artisan French Macaron	Sapore Italiano
Can Can Cleanse	HINT Water	Laughing Glass Cocktails	Storrs Winery
Cinnabar Winery	Hog Island Oysters	Nepresso Coffee	SusieCakes Bakery
CuisineStyle by Chef Pamela Keith	Hope & Grace Winery	Palace Cafe & Catering	Testarossa Winery
Domenico Winery	House Family Vineyards		Windy Hill Winery
			Wrights Station Winery

~ FASHION & MARKETPLACE PARTNERS ~

Anderson Lilley Candles	Haute Tease	Moonlight	Treasured Accessories
Artisan Connect	Jacklyn B Clothing	Nan Fusco Jewelry	UB Chic
Camilla Olson	Kanupriya Jewelry	Parfums Del Rae	Wilkes Bashford Pop Up Shop
Eco Girl Handbags	Kiki Bean and BedHead	Posh Poche	Young Living - Aromatherapy
Flutter Eyewear	M & M Bling	Sarah Oliver Handbags	
glassybaby		Susie O' Handbags	

~ SPA TENT BY SKINSPIRIT ~

Anderson Lilley Candles	Kitchit Tonight	Samba Glow	Young Living - Aromatherapy
Can Can Cleanse	Laughing Glass Cocktails	SkinSpirit Skincare Clinic and Spa, SkinMedica, SkinCeuticals	
Halo Blow Dry Bars	Pressed Juicery		

~ MEDIA & EVENT PARTNERS ~

CA Home & Design	e2K Events and Entertainment	Kern's Fine Jewelry	The Stuart Rental Company
Danielle Terrazas Graphic Design	Gentry	LoneStar Limo	95120 Lifestyle Magazine
	HPD Public Relations	ManServants	

Portola Valley students get new ‘Maker Spaces’

By Barbara Wood
Almanac Staff Writer

It may be hard to convince the students at Ormondale and Corte Madera schools in Portola Valley that what they will be doing in the two new “Maker Spaces” at their schools is actually work.

But by fooling around with the resources in the two rooms — including 3-D printers and robots, among them — the students may gain many skills they could need in the future.

“You can imagine how much they’re going to love this,” said Corte Madera science teacher

Jeanne Rusch as she and the district’s new director of learning and innovation, Jason Borgen, showed off the Ormondale Maker Space the week before school started.

“This is really a work in progress,” said Ms. Rusch.

The room, slated to be ready for students about two weeks after school opens, will have stations for what educators call STEAM (science, technology, engineering, art and math) projects.

There will be areas where students can experiment with circuits and other electronic components, where students

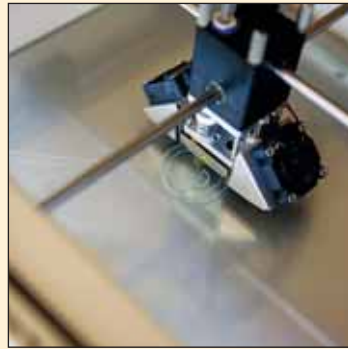


Photo by Michelle Le/The Almanac

An Ultimaker 2 3-D printer creates an earring in Ormondale’s Maker Space.

can write computer programs and games, where they can construct things with supplies such as Legos and marble maze components, where they can make videos (including stop-motion animation gear and a green screen for special effects), where they can design for and use a 3-D printer, and where they can program several types and sizes of robots.

It will be a place, Mr. Borgen said, “for students to explore creative ventures and tinker.” He said students should be able to discover “something they’re passionate about” and “get deeply into” projects there.

“You want to create this generation of designers,” said Mr. Borgen. “Problem solvers,” said Ms. Rusch. “It’s a higher order of thinking.”

The furniture, which was still



Photo by Michelle Le/The Almanac

Jason Borgen, the Portola Valley School District’s learning and innovation director, shows the area in Ormondale School’s new “Maker Space” where students can create stop-motion animations.

making its way from Germany, will be moveable and flexible enough that it can be folded and stowed away. There will be stools, Ms. Rusch said, because chairs take up too much room.

The Maker Space at Ormondale, which has kindergarten to third-graders, will be used for STEM classes in the mornings, and available to classroom teachers for student projects in

the afternoons. It will be easy for Ms. Rusch to use the Maker Space for her science classes, because her classroom is right next door.

The two new Maker Spaces, their furnishings and equipment, are a big part of what the district is calling its “Next Generation of Science & Engineering” program.

The Portola Valley Schools

Foundation raised \$150,000 for the science and engineering program during the last school year. The program includes Project Lead the Way, which has lessons in science and engineering using projects, problems and activities; a competitive robotics team for seventh- and eighth-graders; and parent education in science, technology, math and engineering topics. ■

Cyclist injured in Alpine Road collision

By Dave Boyce
Almanac Staff Writer

A 65-year-old Portola Valley woman who had been heading east on Alpine Road on a bicycle at about 6:40 p.m. Wednesday, Aug. 19, was taken to Stanford Hospital after colliding with a small westbound station wagon making a left turn at Indian Crossing, according to the San Mateo County Sheriff’s Office.

Resident Angela Hey, who lives near the scene of the accident, said she called 911 after hearing a woman scream, followed a few seconds later by the sound of a crash.

Medics from the Woodside Fire Protection District and deputies arrived at about the same time, Detective Salvador Zuno of the Sheriff’s Office

The collision left the cyclist with large cuts and scrapes on her left side.

said. The collision left the cyclist, who was wearing a helmet, with large cuts and scrapes on her left side, but not life threatening injuries, he said.

A Palo Alto man in his 30s was driving the car, he said.

The accident took place in a section of Alpine Road with a long downward slope heading east, allowing cyclists to pick up speed before reaching the stop sign at the intersection with Portola Road.

The collision caused damage to the bike and minor damage to the car, Mr. Zuno said. Ms. Hey said the collision damaged the car’s windshield. ■

Correction in statistics on water use

Editor’s note: The Almanac misinterpreted water use data from Cal Water in our reporting an earlier version of this story. The average usage number is per water meter per month in units (1 unit = about 748 gallons or 100 cubic feet of water) — not daily per capita use in gallons. This version contains the corrected data.

By Barbara Wood
Almanac Staff Writer

Atherton and Menlo Park customers of the California Water Service Company’s Bear Gulch District didn’t quite meet the 36 percent water use reduction goal in July. But they were both close at a 35 percent reduction in the amount of water each community consumed that month compared with July 2013, according to figures from the water company. Both Portola Valley and Woodside exceeded the 36 percent

goal.

Average monthly use per water meter in Atherton for July was 51 units (1 unit = about 748 gallons or 100 cubic feet of water), down from 78 units average use in July 2013.

In Menlo Park, the average use per meter for the month was much less, 16 units, down from 25 units in July 2013.

Overall, in July the Bear Gulch District saved a little more than the 36 percent water use savings mandated by the state. District Manager Dawn Smithson said district water use was down by 38.6 percent, giving it a cumulative reduction of 39.7 percent since June.

“We are on target, but need to keep up the same standard of conservation if we are going to meet that goal,” Ms. Smithson said.

In Portola Valley, Bear Gulch customers cut their water use last month by 42 percent from

July 2013, with a monthly average use per meter of 27 units compared with 47 units two years ago.

In Woodside, customers reduced their water use by 39 percent in July, with an average monthly use of 56 units compared with 96 units in July 2013.

The Menlo Park Municipal Water District reduced the amount of water it purchased by 46.3 percent, far more than the 16 percent the district has been mandated to save. According to Pam Lowe, a senior civil engineer for the city, residential users reduced their water use by about 33 percent from July 2013, and commercial and industrial water users reduced their use by 38 percent.

The rest of the municipal district’s water use is for irrigation accounts, temporary accounts (such as for construction), public facilities and water lost in the system, Ms. Lowe said. ■



Photo courtesy Menlo Park City School District

Menlo Park City School District's World Language Design Team members — including school administrators, teachers, parents and students — discuss prototype world language programs at Stanford's Design School last year.

Menlo Park school district expands language programs

By **Barbara Wood**
Almanac Staff Writer

The Menlo Park City School District is working hard this year to achieve a goal it adopted in 2008: to offer world language programs to all district students.

Last year design teams of parents, educators and students from each school met at the Stanford Design School to create prototype world language programs to launch this school year.

At Oak Knoll, fifth-graders will boost their Spanish speaking skills prior to entering Hillview Middle School. The school eventually wants to offer the classes from kindergarten to fifth grade.

"Our goal is for everyone to learn a little Spanish," said principal Kristen Gracia. She said fifth-graders will receive consistent language instruction from a Spanish teacher, while all classrooms will offer at least some language experiences throughout the year.

Encinal and Laurel schools will have Spanish language instruction in primary grade classes not already in the Spanish immersion program. Principal Sharon Burns said Encinal's new "Spanish as a World Language Program" for kindergartners "makes language learning a cultural adventure." She said students will have lessons

focusing on the gradual development of listening and speaking, while fostering excitement toward language learning.

"This program supports all students, from beginners to heritage speakers," Principal Burns said.

Principal Linda Creighton said at Laurel, all kindergarten and first-grade students will learn Spanish, either in an immersion classroom or from a Spanish specialist teacher.

"The entire student body will participate in school-wide cultural events throughout the year," she said. She said that as the program expands, she "envision[s] a school where Laurel students learn more deeply about

ed elementary school immersion programs or are native speakers.

Principal Haug said Hillview may add more world languages if there is interest. Last year, both Mandarin and Latin were given as choices, with the commitment to offer the one that received the highest registration if a minimum enrollment was reached. The minimum was not met for either option, however, so neither is offered. Principal Haug said the school will explore interest in Mandarin and Latin again for the next school year.

The district is also adding two Spanish speaking interns who will work in the Spanish immersion classrooms, with the elementary school Spanish language specialists, and in the Hillview Spanish for Spanish Speakers class. Two more interns will be added next year to support the growing world language program.

Superintendent Maurice Ghysels said "language learning can benefit all students." He said research shows language study can make reading easier and that language learners develop a more positive attitude toward the target language and those who speak the language.

"We are excited to build on the successful language programs that we already have, as well as provide more opportunities to celebrate, learn and open doors for all Menlo Park City School District students," Superintendent Ghysels said. ▀

'Our goal is for everyone to learn a little Spanish.'

OAK KNOLL PRINCIPAL
KRISTEN GRACIA

culture and language, which will strengthen their development as globally minded citizens."

Hillview Middle School will continue to offer both Spanish and French. Principal Willy Haug said Hillview students can take two years of high school level languages or choose to complete one year of high school Spanish over two school years.

In addition to these options, Hillview offers a Spanish for Spanish Speakers program to students who have either attend-



Gym Workouts for All Ages

Customized programs include high performance equipment, coaching and group classes.

"I see the staff greeting, encouraging and mentoring people with whatever their personal goals are. It's all such a positive experience."

R Riekes Center
for human enhancement

3455 EDISON WAY
MENLO PARK
(650) 364-2509

RIEKES.ORG · INFO@RIEKES.ORG

Forte
Music Enrichment
Program
Age 4 - Grade 4



Building strength and excellence through music

Students will learn: Musicality, Singing, Handchimes & Handbells, Music & Theatre games, and much, much more!

Age 4 - Kindergarten
Mondays, 3:15 - 4:15pm
September 14 - December 7

Grade 1 - Grade 4
Thursdays, 3:30 - 5:00pm
September 17 - December 10

Learn more and register: bethany-mp.org/forte

Bethany Lutheran Church

1095 Cloud Avenue, Menlo Park | 650-854-5897

THIS LABOR DAY WEEKEND Take a ride in our 1920's STEAM POWERED time machine!

Let our time machine take you back as you experience the rush of a vintage 1920's steam locomotive when it comes to life and chugs through scenic Niles Canyon. Grab your friends and family and come Join us for a train ride. Come relive old memories and create new ones too in the beautiful canyon scenery! With tickets prices starting at \$20 for adults, \$10 for kids and departures on both Saturday and Monday, our excursions are great options the young and young at heart.

Sept. 5th & 7th

Trains arrive and depart from the Sunol Dept
Located on SR-84 just west of I-680

TICKETS PRICES

Adults \$20

Children (2-12) \$10

Visit GGRM.org for more details



Southern Pacific 2472 on the Niles Canyon Railway
Golden Gate Railroad Museum • Pacific Locomotive Association

Services, equipment and offers are subject to change without notice. Complete details available at ggrm.org. This event is made possible through a partnership between the Golden Gate Railroad Museum and the Pacific Locomotive Association that enables continued restoration of historic railway equipment and right of way for today's and tomorrow's generations.



Photo by Clay Curtin/City of Menlo Park

Pop-up park

Menlo Park's latest public park will only be around for six weeks, but during that time the "pop-up park" on Chestnut Street between Santa Cruz and Menlo Avenue will host a plethora of events, such as this inflatable play structure that went up during the Aug. 20 downtown family fitness event. Free family movies will be shown in the park on Friday nights in September and the park will also have chairs for lounging and a changing roster of activities. The first screening: "Guardians of the Galaxy" at 7:30 p.m. Friday, Sept. 4.

Autumn in Woodside

Sunday Sept. 13 • Taste of Woodside

Sponsored by Woodside/Portola Valley Rotary Club

To raise funds for community and international benefit programs. Enjoy tasting the best of Woodside area wines, Silent and Live Auctions and a fabulous multi-course dinner. Held at the Woodside Village Church-Grace Courtyard 5pm to 9pm. www.TasteOfWoodside.com

Saturday Sept. 26 • NCEFT Heroes and Horses • A Jewels & Jeans Gala

Hosted Bar, Dinner, Fund-A-Need, Auction and entertainment. All proceeds go to support NCEFT Therapy programs for children, adults and our military veterans. Held at NCEFT— 880 Runnymede Road. More information and tickets www.NCEFT.org/2015Gala

Sunday Sept. 27 • Chili Cook-off

To raise funds for the Woodside-Portola Valley Fire Protection Foundation.

Taste some of the best chili around. Enjoy a live band, silent and live auction and old fashioned Firefighter BBQ and kids games all to support your local fire department. Held at Runnymede Farm 3 pm to 7 pm. www.firedistrictfoundation.org

Saturday Oct. 3 • Woodside Barn Dance

Sponsored by the Woodside Recreation Committee.

Bring the whole family and your friends and enjoy pony rides, a petting zoo, face painting, the mechanical bull, Firetruck rides, puppet shows, clowns, magicians, equestrian demonstrations, and more...in a down home country party. Our famous BBQ starts at 5pm for the young and old. Stay around for an evening of rock and roll dancing at the Mounted Patrol Grounds. 3-10 pm. Buy tickets in advance online at www.woodsiderec.net.

Saturday Oct. 10 • Woodside Day of the Horse

Sponsored by WHOA! – Woodside-area Horse Owners Association

Join us at the Horse Fair, for free (Woodside Town Hall 10-2:30). Ride the Wells Fargo Stagecoach, listen to a horse's heart-beat, learn all the horse activities in this area & more! Or pre-register for the Progressive Ride and ride through Woodside's beautiful Town trails (11-2). Proceeds go towards the preservation of the rural heritage, which horses support. www.whoa94062.org

Sunday Oct. 11 • Woodside Pumpkin Festival

Sponsored by the Mounted Patrol of San Mateo County

Bring the kids and enjoy pony rides, bouncy house, a haunted house and petting zoo while you find the great pumpkin for your little one at the Mounted Patrol Grounds. Hamburgers, hot dogs, beer, wine, soft drinks are available. A portion of the proceeds benefit schools and equestrian causes in the area. Daily horse events in the arena. 9 am to 5 pm. Free admission. www.Woodsidepumpkinfestival.com Look it up on Facebook!

Saturday/Sunday • Oct. 17 & 18 • Woodside Pumpkin Festival • Continues

Only 2 minutes from downtown Woodside. Why drive for 2 hours to Half Moon Bay? A portion of the proceeds benefits schools and equestrian causes in the area. Mounted Patrol Grounds. 9 am to 5 pm. Free admission. www.Woodsidepumpkinfestival.com

Saturday/Sunday • Oct. 24 & 25 • Woodside Pumpkin Festival • Final weekend

Final days of the festival. Enjoy quality family time while searching for the pumpkin that is perfect for you. Help support local schools and equestrian activities in the area. Mounted Patrol Grounds. 9 am to 5 pm. Free admission. www.Woodsidepumpkinfestival.com

October events are held at the Mounted Patrol Grounds, 521 Kings Mountain Road, Woodside.

See map at <http://www.mpsmc.org>

The Mounted Patrol Foundation, a 501c3 supports all of the events above, and is assisting in the advertising of events.

■ POLICE CALLS

This information is based on reports from the Menlo Park Police Department and the San Mateo County Sheriff's Office. Under the law, people charged with offenses are considered innocent unless convicted. Police received the reports on the dates shown.

PORTOLA VALLEY

Residential burglary: An unlocked sliding door is believed to have been the entry point for a burglar who stole a purse and two figurines from a home on Westridge Drive while the resident was taking a nap. The front door was found ajar. Estimated loss: \$1,800. Aug. 12.

Traffic accident: A bicyclist headed east on Alpine Road collided with the right side of a vehicle entering the Alpine Hills Swim and Tennis Club, knocking her off her bike. The accident left the cyclist with abrasions on her arm and hip, but she refused medical attention. Aug. 12.

WEST MENLO PARK

Residential burglary: Someone kicked in the front door of a home on Prospect Street and stole several pieces of jewelry and \$200 in cash. Estimated loss: \$5,600. Aug. 12.

LADERA

Theft: A woman attending a party at a home on Erica Way discovered a cell-phone, credit cards and car keys stolen from her purse, which she had left unattended. Estimated loss: \$650. Aug. 9.

WOODSIDE

Arson: Someone tried to ignite the mesh fence that surrounds the tennis courts at Woodside Elementary School

at 3195 Woodside Road. Estimated loss: \$500. Aug. 11.

Residential burglary: A resident of the 2000 block of Portola Road told deputies that his home had been burglarized. Deputies had no details except the estimated loss: \$8,800. Aug. 11.

Assault, battery and attempted strong arm robbery A man and three friends stopped by a raucous party on Ranch Road where fighting was going on. The man was patted down at one point by another man holding a gun and who had pointed the gun at him. The man and his friends, some of whom had minor injuries from the fighting, ran to their cars and drove off to report the crimes. Aug. 8.

Fraud: Management at Roberts Market, with the assistance of San Mateo County authorities, were able to track down details of a man and woman suspected of using a Roberts credit line belonging to a resident of Hardwick Road to make purchases at the store in June. Aug. 6.

Traffic accident: A woman riding a bicycle north on Whiskey Hill Road either struck something on the pavement or tried to avoid striking it, lost control of her bike and flipped it. She struck her head — she was wearing a helmet — and received abrasions on her face and body. Medics took her to Stanford Hospital for treatment. Aug. 8.

MENLO PARK

Residential burglaries:

■ Someone broke into a garage on Elder Avenue and stole a laptop computer, portable radio, clothing, cassette tapes, \$20 in cash, and two watches. Estimated loss: \$2,020. Aug. 14.

■ A bike was stolen from an open garage on Elder Avenue. Estimated loss: \$500. Aug. 14.

Commercial burglaries:

■ At St. Patrick's Seminary on Middlefield Road, someone smashed a seminary window and some drawers that had been closed were found open, but nothing appears to have been taken. Aug. 14.

■ At Exponent Engineering and Scientific Consulting on Jefferson Drive, a security guard scared away someone trying to break through a locked gate on company grounds. Aug. 14.

Auto burglary: A burglar opened a car parked on Marsh Road by manipulating the door lock, then stole from the trunk a wallet containing \$3,000 in cash. Aug. 15.

Thefts:

■ A man was seen entering the Safeway supermarket at 525 El Camino Real, placing a bottle of liquor in the pocket of his hooded sweater, walking out while carrying a case of Sierra Vista Pale Ale, placing the beer in the basket of his bike and riding off. Estimated loss: \$19. Aug. 20.

■ An employee of Big 5 Sporting Goods on El Camino Real followed a customer outside and recovered five shirts that the customer had put inside a backpack and had not paid for before leaving the store. Aug. 15.

Fraud: A resident of Del Norte Avenue got suspicious and contacted police after agreeing to sell a cellphone to someone who sent the resident a check for \$2,430 with instructions to deduct the amount of the phone plus \$50 and give the remainder to a courier. Aug. 20.



Matched Care Givers

Menlo Park - San Mateo - San Jose



"There's no place like home."

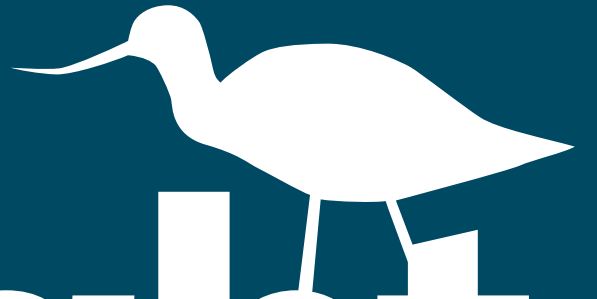
When you, or someone you care about, needs assistance... you can count on us to be there.

We provide Peninsula families with top, professional caregivers. Call now

(650) 839-2273

www.matchedcaregivers.com

31ST ANNUAL
PALO ALTO WEEKLY



moonlight

PRESENTED BY CITY OF PALO ALTO

10K•5K RUN & WALK

Benefiting local nonprofits serving families and children

FRIDAY **SEPT 25** 7PM

at Palo Alto Baylands Athletic Center

REGISTER ONLINE

PaloAltoOnline.com/moonlight_run

PRESENTED BY



CORPORATE SPONSORS



EVENT SPONSORS



COMMUNITY SPONSORS



PREMIER PROPERTIES

represented by **Scott Dancer**



Woodside
OFFERED AT \$7,950,000



Woodside
OFFERED AT \$1,900,000



Woodside
OFFERED AT \$7,495,000



Woodside
OFFERED AT \$2,250,000



Woodside
OFFERED AT \$6,888,888



Portola Valley
OFFERED AT \$2,495,000



Woodside
OFFERED AT \$4,875,000



Woodside
OFFERED AT \$1,950,000



Woodside
OFFERED AT \$4,495,000



Woodside
OFFERED AT \$18,900,000



Woodside
OFFERED AT \$8,950,000



Portola Valley
OFFERED AT \$4,950,000

www.scottdancer.com



Coldwell Banker
#1 Individual Agent, Woodside/Portola Valley Offices, 2013 & 2014
#1 Agent SF Peninsula, 2013
#3 Agent out of 85,000 Internationally, 2012

Scott Dancer

650.888.8199
scott@scottdancer.com
CalBRE# 00868362
2969 Woodside Road
Woodside, CA 94062

