

# The Almanac

THE HOMETOWN NEWSPAPER FOR MENLO PARK, ATHERTON, PORTOLA VALLEY AND WOODSIDE

OCTOBER 28, 2015 | VOL. 10 NO. 8



WWW.THEALMANACONLINE.COM

**SENIOR SUMMER**

**SOJOURN**



**FOR SOMETHING COMPLETELY DIFFERENT,  
TWO SEQUOIAS SENIORS  
GO TO BURNING MAN | PAGE 21**

# COME ON IN



**MENLO PARK \$3,950,000**

1650 Oak Avenue | 4bd/3ba  
Valerie Soltau | 650.462.1111



**REDWOOD CITY \$2,695,000**

542 Live Oak Lane | 5bd/3.5ba  
Estela Freeman | 650.462.1111



**LA HONDA \$898,000**

9111 Alpine Road | 3bd/1ba  
K. Bird/S. Hayes | 650.529.1111



**SAN MATEO \$829,500**

112 Madison Avenue Unit 203 | 2bd/2ba  
Nancy Palmer | 650.529.1111

# The story behind Menlo Park's Legion of Honor recipient

By Kate Bradshaw

Almanac Staff Writer

Walter Jaye and his wife Diana seem, at first, like many other couples in Menlo Park. They live on Menlo Oaks Avenue, in a charming English Tudor style cottage and have a well-groomed, fluffy dog named Kirby.

The two met over a game of bridge in 1965. At the time, Mr. Jaye was an electrical engineer working at Stanford Research Institute following an assistantship at Stanford University and a Fulbright scholarship.

Sounds like a typical Menlo Park success story, right?

Not quite.

What is less apparent about Mr. Jaye is the remarkable tale of survival he kept tucked away in the recesses of his memory, a story hidden even from his own children until he wrote his memoirs decades later.

Flash back to 1925, and cross the globe to Berlin, Germany, where Walter Jaye, then Jakubowski, was born to Jewish parents on Oct. 21.

Mr. Jaye's father worked in Germany in the old-world industry of casings: importing and trading animal intestines to enclose sausages. Before Walter was 9 years old, Hitler came to power in Germany. Shortly thereafter Mr. Jaye, along with his mother and older sister, departed Germany for Belgium to rejoin their father, who had made the trip several months earlier.

When Belgium became occupied by Germany in May 1940, his father was suddenly classified as an enemy alien and sent to the French internment camp at Gurs. The family joined them soon after as refugees, where they struggled together for survival.

In July 1942, his parents found a way to transfer him to an agrarian camp, where there was rumored to be more food, something that excited the then 16-year-old Mr. Jaye. Weeks later, in mid-August, all of the

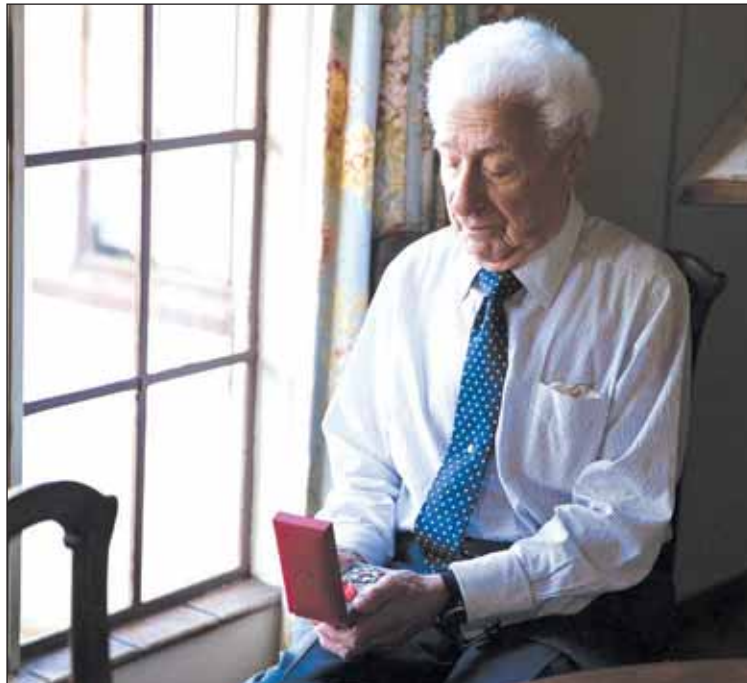


Photo by Michelle Le/The Almanac

**Walter E. Jaye** holds his French Legion of Honor award on his birthday, Oct. 21, at his home in Menlo Oaks.

Jews in Gurs were rounded up and deported. His parents were taken to Auschwitz in September 1942 and were killed there. His sister managed to escape and found refuge in Switzerland.

Meanwhile, Mr. Jaye's caretakers at the agrarian camp received a tip-off from insiders

## Walter Jaye receives Legion of Honor award for his World War II service to France.

in the Vichy government in the form of a late phone call saying, "They're coming for you tomorrow morning."

Walter and about 20 others fled to safety in a town called Le Chambon, a predominantly Huguenot Protestant town near Lyon, France.

"Having had the experience of being pursued and murdered for their faith," Mr. Jaye said, the people of Le Chambon "were very sympathetic to people like me: Jewish refugees."

During the time he lived in Le Chambon, roughly between

September and December of 1942, he went into hiding six or seven times during raids conducted by the Vichy police, camping out in shelters or in the woods. Neither he nor any of the other estimated 150 Jewish children scattered throughout the town was caught during those raids. He also had a rare chance to attend the local high school. There, he met the director of the school, a Protestant minister and resistor of the Nazi regime.

By December, France had become fully occupied by Germany, and remaining in hiding was becoming more dangerous. Mr. Jaye remembers telling the minister, "I'm not going to be caught without a rifle in my hand."

Soon after, he secured false identity documents and railroad tickets. On Dec. 30, 1942, he and a group of 11 others set out to cross from France into Spain. After a grueling 28-hour hike up and over the Pyrenees, followed by stealthily riding the cabooses of freight trains, he and only one other of his companions reached Barcelona, Spain.

See **WALTER JAYE**, page 12

## CALLING ON THE ALMANAC

Newsroom: **223-6525**  
Newsroom fax: **223-7525**  
Advertising: **854-2626**  
Advertising fax: **223-7570**  
Classified ads: **854-0858**

■ E-mail news, information, obituaries and photos (with captions) to: [editor@AlmanacNews.com](mailto:editor@AlmanacNews.com)  
■ E-mail letters to the editor to: [letters@AlmanacNews.com](mailto:letters@AlmanacNews.com)

To request free delivery, or stop delivery, of The Almanac in zip code 94025, 94027, 94028 and the Woodside portion of 94062, call **854-2626**.

THE ALMANAC (ISSN 1097-3095 and USPS 459370) is published every Wednesday by Embarcadero Media, 3525 Alameda de las Pulgas, Menlo Park, CA 94025-6558. Periodicals Postage Paid at Menlo Park, CA and at additional mailing offices. Adjudicated a newspaper of general circulation for San Mateo County, The Almanac is delivered free to homes in Menlo Park, Atherton, Portola Valley and Woodside. Subscriptions for \$60 per year or \$100 per 2 years are welcome. POSTMASTER: Send address changes to the Almanac, 3525 Alameda de las Pulgas, Menlo Park, CA 94025-6558. Copyright ©2014 by Embarcadero Media, All rights reserved. Reproduction without permission is strictly prohibited.

**JOANSTENNICK**  
**CARLHEYWARD**  
**ALVAROSÁNCHEZ**



November 2015

**Meet Artists**  
Friday, Nov 13  
7pm to 9pm

**Wine - Live Music**  
Saturday, Nov 14  
12pm to 5pm



**Unleashed Art Gallery**  
2744 Broadway Street  
Redwood City

Tuesday - Saturday  
11am - 7pm

[unleashedartgallery.com](http://unleashedartgallery.com)



**November 3, 2015 is an ALL-MAILED BALLOT ELECTION**

Easy ★ Convenient

Important things to know about voting by mail this election:

- Return your ballot by mail in the postage paid envelope, or return it in person.
- Ballots returned in the mail must be postmarked by Election Day and received by our office no later than November 6 to be counted.
- Ballots dropped off must be returned no later than 8 p.m. on Election Day.
- On Election Day you may cast your vote at any of the Universal Polling Places located throughout the County.

For a detailed list of Ballot Drop-Off Locations and Universal Polling Places, contact us at [www.shapethefuture.org](http://www.shapethefuture.org) | 650.312.5222



Official Message from  
Registration & Elections Division  
San Mateo County

**Vote!**



PRESENTING A NEW DESIGN FOR STANFORD'S PROJECT  
**MIDDLE PLAZA AT 500 EL CAMINO REAL**  
Living, Working, Dining, Shopping at the Gateway of Menlo Park



We are excited to provide an important update on the progress of the **Middle Plaza at 500 El Camino Real** project in Menlo Park.

On Monday, September 28, 2015, Stanford University submitted an update of our application to the City of Menlo Park with revised plans for a mixed-use project at 500 El Camino Real.

We hope you'll join us for an upcoming community open house where you'll have an opportunity to ask questions and provide feedback.

We encourage you to learn more about the revised project by visiting [www.middleplaza.org](http://www.middleplaza.org). Thank you for your continued interest in Middle Plaza at 500 El Camino Real in Menlo Park.

**MIDDLE PLAZA AT  
500 EL CAMINO REAL  
COMMUNITY OPEN HOUSE**

Drop-in Hours:

**Thursday**  
**November 5, 2015**  
6:00 p.m. – 8:00 p.m.

**Saturday**  
**November 7, 2015**  
10:30 a.m. – 1:00 p.m.

**Encinal Elementary School**  
195 Encinal Avenue

For more information, visit:  
[www.middleplaza.org](http://www.middleplaza.org)



Because **Living  
at Home** is the  
Best Way to Live

**Call one of our Clients Care Managers today  
for your free consultation!**



**650-462-6900**  
148 Hawthorne Avenue  
Palo Alto, CA 94301  
[www.HomeCareAssistance.com](http://www.HomeCareAssistance.com)

**Help your senior loved one live safely and independently at home with premier care from Home Care Assistance.**

**24/7 Live-In Care Specialists.** We offer the highest quality around-the-clock care for the most competitive price - guaranteed.

**The Trusted Choice for Caregivers.** Each has at least 2 years of experience and receives extensive training through our Home Care Assistance University. All applicants are thoroughly screened, including DOJ background checks, and a proprietary psychological exam designed to assess honesty and conscientiousness.

**Experienced with Advanced Care Needs.** Our caregivers are experienced with caring for clients with special conditions such as Alzheimer's, stroke and Parkinson's. We also develop more customized care plans and training for these clients.

**Brain Health Experts.** We are the only home care agency that offers Cognitive Therapeutics, a research-backed activities program that promotes brain health and vitality in our clients.

**Serving happy clients in Palo Alto, Menlo Park, Portola Valley, Woodside and Atherton!**

# Local News

MENLO PARK | AHERTON | WOODSIDE | PORTOLA VALLEY

## Zuckerberg, Chan to open new school

By Elena Kadvany  
Palo Alto Weekly

Philanthropist couple Mark Zuckerberg and Priscilla Chan are investing in yet another educational venture, this time in their own backyard: a private, pre-K through eighth-grade school in East Palo Alto that will integrate health and education to serve disadvantaged children.

The school will serve children and families in East Palo Alto and the Bell Haven community of Menlo Park.

The founder of Facebook and his wife, a former teacher and now a pediatrician at San Francisco General Hospital, have partnered with East Palo Alto's Ravenswood Fam-

ily Health Center to open The Primary School, a comprehensive "school and service model that supports the development of the whole child," reads the school's website, [ThePrimarySchool.org](http://ThePrimarySchool.org), which includes information in English and Spanish.

"Our approach integrates primary education and primary care, effectively braiding together education, health, and family support services starting at birth," the website says. "In doing so, TPS will expand the traditional definition of 'school' in order to prepare all children to succeed in college, career, and life."

Ms. Chan, who will serve as The Primary School's CEO, wrote in a Facebook post that her own experience running an after-school program in a low-income housing

project and working as a pediatrician in a "safety net" hospital has demonstrated to her "first hand that we need a better way of caring for and educating our children."

"The effects of trauma and chronic stress create an invisible burden for children that makes it very difficult for them to be healthy and live up to their academic potential," she wrote. "We must address these issues holistically in order to allow children to succeed."

In an interview, Ravenswood Health Center CEO Luisa Buada described the new school model as "a program where health and education work hand in hand."

Ravenswood will provide health services – particularly prena-

**They plan to partner with Ravenswood Family Health Center to create a new, integrated health-education model.**

tal support and until children are 3 years old, at which point they will, ideally, enter The Primary School as preschoolers. School coaches will work with each family individually to create what Ms. Buada called a "health and education growth plan" for the child.

The private school, which is tuition-free, aims to support its students' growth and success primarily by empowering their parents and caretakers to become more connected, educated and involved, she said.

"That's focusing on what parents want, the best for their children," she said of the plans. "So, 'I want my child to go to college someday; I would like my child to do well in school. How do I get there?' Working with families around the things that are challenges for



Photo by Christophe Wu

**Priscilla Chan**, left, pediatrician and CEO of The Primary School, a new, free, preK-8 private school to open in East Palo Alto in 2016, with the school's president and chief operating officer, Meredith Liu.

them; helping parents so they can be empowered to do more with their kids — giving them information, knowledge, resources and connection to other programs in the community that may be more than just a referral, more than just a phone number to call or more even than a warm hand-off but actually bringing organizations in to meet with parents."

Ravenswood's new partnership with Mr. Zuckerberg and Ms. Chan leverages the best of each partner's worlds — the community connections of the Ravenswood Health Center, from which the school will recruit families, and the financial backing and educational knowledge that Ms. Chan and her team will bring.

Ms. Buada said pediatricians often become frustrated at the limitations they have in supporting young patients who come from

disadvantaged backgrounds. They see them frequently as newborns or if they're sick, and can point parents to resources or information, but often see children by age 3 falling behind developmentally, socially and emotionally. Pediatricians frequently feel that they're "losing the battle," she said.

"Most of these kids, they don't have developmental delays that are so severe that require special programs. These are delays associated with socialization and the environment that they're in and their access to knowledge and resources that other children who have better incomes, frankly, (have)," she added.

The Primary School is set to open in August 2016 with the first class of preschoolers. It will provide full-time school for 4-year-olds and parent-based programming for infants and 2-year-olds,

according to the website. The school will add a new grade each year. Preschool will run from 7 a.m. to 7 p.m. to support working parents, Ms. Buada said.

Curriculum will draw from the Common Core State Standards so if children leave The Primary School for the local public school district or elsewhere, their academic transition will be smooth, she said.

The Primary School team includes Meredith Liu, who has been working in K-12 urban education for more than a decade and most recently as chief financial officer at Match Education, a high-performing charter management organization and teacher-training program. Ms. Liu will serve as The Primary School's president and chief operating officer.

See **SCHOOL**, page 6

## Menlo Park to extend free parking time in downtown area

By Kate Bradshaw  
Almanac Staff Writer

For a six-month trial period starting in January, free parking hours on the street in downtown Menlo Park will be extended to 90 minutes (from the current 1 hour), and in the parking plazas to three hours (from the current two hours).

After the trial, the city will decide whether to make the changes permanent.

The City Council moved to extend the free parking time in

several votes at its meeting on Oct. 20.

The council, at the suggestion of council member Kirsten Keith, also directed staff to look into making parking permits transferable between employees and creating a more affordable parking permit option for service workers and those working at minimum wage.

Free plaza parking downtown was extended to three hours by a 4-1 vote, with dissent from Councilwoman Keith. Free street park-

**City will try this for six months and decide whether to make it permanent.**

ing was extended to 90 minutes on a 3-2 vote, with Ms. Keith and Councilman Rich Cline dissenting.

The motion to extend one-hour street parking to two hours failed on a 2-3 vote, with dissent from

Ms. Keith, Mr. Cline and Mayor Catherine Carlton. Councilman Ray Mueller proposed the 90-minute option, saying it would create a time cushion for people wanting to eat lunch downtown.

Before the vote, nine community members, a number of whom were small business owners and employees of downtown Menlo Park shops, voiced strong opinions against and in support of the parking limit extension.

Voicing opposition to longer parking times was Bill Kirsch,

chair of the city's Bicycle Commission. He said he'd rather see people who want additional parking beyond two hours pay for it in a convenient way. Instead of cars, he encouraged people to use alternative transportation such as biking or walking downtown.

Adina Levin of the Transportation Commission favored paid parking as well.

Richard Draeger of Draeger's Market, in written comments to

See **PARKING**, page 6

Quality. Service. Value.



## Is your home or business as water-efficient as it can be?

Let California Water Service (Cal Water) help you find out! The State has set the water-use reduction requirement for our Bear Gulch District at 36%. To help you reach that target, Cal Water is offering Water Use Efficiency Evaluations to our residential and business customers at no charge. Please visit [www.calwater.com/eval](http://www.calwater.com/eval) or call (844) 207-1313 today!



Proudly serving Bear Gulch District since 1936

**TOWN OF WOODSIDE  
2955 WOODSIDE ROAD  
WOODSIDE, CA 94062**

**PLANNING COMMISSION  
November 4, 2015**

**6:00 PM**

### PUBLIC HEARING

- |    |                          |   |
|----|--------------------------|---|
| 4. | Town of Woodside         | CUSE2015-0003 & CUSE2015-0004           |
|    | 2991-2995 Woodside Road  | Planner: Sage Schaan, Principal Planner |
|    | (within a Town Easement) |   |

Review and approval, conditional approval, or denial of a proposal to obtain a Conditional Use Permit for the existing Town Center Sewer Pump Station (CUSE2015-0003) and construct upgrades to the Station (CUSE2015-0004); located within the stream corridor of Dry Creek, a Town-designated Stream. The purposes of the upgrades include: improvements to public health and safety, and increased environmental safeguards. The project includes biological mitigation and monitoring, and is Categorically Exempt from the California Environmental Quality Act (CEQA) pursuant to Sections 15301(b)(d)(f) and 15302(c)

- |    |   |  |
|----|---|--|
| 5. | WMC Chapter 151, Site Development,<br>Including New Development Standards for Basements | ZOAM2015-0003                            |
|    |   | Planner: Jackie Young, Planning Director |

Continued (Third Review – Full Chapter 151): Review and recommend approval, conditional approval, or denial to the Town Council of an ordinance to amend and update Woodside Municipal Code Chapter in its entirety, to address: development standards for basements; items included in grading calculations; the findings necessary for a Second Driveway Exception; spelling/sentence structure corrections; updates to referenced documents, State law, and responsible agencies; review of definitions for outdated, erroneous, or missing terms; obsolete practices; current regulations of outside agencies, such as County Health and the Woodside Fire Protection District. **This Item was continued from the October 21, 2015, meeting.**

All application materials are available for public review at the Woodside Planning and Building Counter, Woodside Town Hall, weekdays from 8:00 – 10:00 AM and 1:00 – 3:00 PM, or by appointment. For more information, contact the Woodside Planning and Building Department at (650) 851-6790.

# Zuckerberg, Chan to open new local school

## SCHOOL

*continued from page 5*

Andrew Elliott-Chandler, who has taught in east San Jose for the last decade, will serve as the school's principal. Most recently, he was the principal at Rocketship Education, a K-5 blended-learning public charter school in San Jose.

Family and Community Engagement Manager Nora Razon, a native of Mexico, grew up in East Palo Alto and also worked at local community organizations such as College Track and the Renaissance Entrepreneur Center in East Palo Alto.

Mr. Zuckerberg and Ms. Chan are frequent investors in local and national community organizations. In 2014, they donated \$5 million to the Ravenswood Health Center, which reopened in a new multi-million dollar facility in March. The health center, which serves close to 13,000 very low-income patients in family practice, pediatrics and

reproductive health care, plans to double the number of clients it can handle by 2018.

Mr. Zuckerberg also famously in 2010 donated \$100 million to the struggling Newark, New Jersey, public school system with ambitious plans to transform the district within five years — plans that are widely viewed as falling flat.

“At some point ... we have to address the issues in the wider community. We can't just sit in our programs and provide services,” Ms. Buada said. “That's not working.”

The announcement about the new school coincides with a community push to improve the local educational system. A group of East Palo Alto parents, who have been organizing for more than a year, hosted on Oct. 26 a “community action forum” to ask local elected officials to support the potential opening of a KIPP Public Charter School to serve East Palo Alto and Belle Haven families. ■

## PARKING

*continued from page 5*

the council, said extending parking to three hours in the Draeger's lot could limit the parking supply for grocery shoppers, as employees may opt to use the three-hour parking spots intended for customers instead of purchasing parking permits.

Those in favor of the parking time extension included Marko Petricevic, an employee at Trader Joe's, who said that employees there frequently either receive parking tickets — a significant burden on hourly workers making between \$11 and \$20 per hour — or compromise customer service when they must move their cars every two hours.

Also in favor of the extension was Tiger Bachler, owner of Alys Grace on Santa Cruz Avenue. She said that Menlo Park has gained a reputation as a “very difficult city to do business in,” due to its harsh parking limits and enforcement.

Laurie Farros, owner of Head over Heels, and her husband Royal Farros, who celebrated their 21st anniversary at the Oct. 20 meeting, said customers who have had a negative experience with parking in Menlo Park often leave to do business at Town and Country or Stanford Shopping Center, sometimes permanently.

Ms. Farros said her customers often complain about not having time to do the things they want and feel like they're being chased out. Eva Etter added that for the growing elderly population in

Menlo Park, biking and walking may not be feasible alternatives.

Councilman Cline emphasized that the city should create safeguards against accidentally creating a parking shortage, if and when the city's downtown becomes sufficiently vibrant and populated to increase parking demand.

Mayor Carlton said she often meets with prospective business owners, and many voice concerns about the low amount of foot traffic.

“We don't have the foot traffic because after two hours we chase them away with a two-by-four,” she said. “I want us to have the best downtown possible. I think this is a small step toward that.”

Mr. Mueller went a step further and mentioned a plan he thinks could attract people to spend more time downtown: building a parking structure in downtown Menlo Park that would also house an entertainment venue like a movie theater. He proposed issuing a request for proposals from the private sector to see what plans could be generated.

At the meeting, the City Council also received four Beacon Sustainability awards on behalf of the city, recognized Gizelda Sipos for her community service, approved a labor agreement between 36 unionized city workers and the city, approved a sponsorship policy for the Community Services Department, and selected designs for a new antenna for the Menlo Park police and public works departments. ■

# Menlo Park: Neighbors oppose plan for townhouses

By Kate Bradshaw  
Almanac Staff Writer

Residents of Stone Pine Lane in Menlo Park were none too pleased when developer Derek “Deke” Hunter presented revised plans Oct. 19 to build 24 townhouse-like residential units at 133 Encinal Avenue, the former site of the Roger Reynolds Nursery.

Mr. Hunter, who presented the plans at the Menlo Park Planning Commission meeting, proposes to build eight buildings. Six would be three stories high. Of the two structures closest to Stone Pine Lane, one would be two stories and the other, one story.

Among those objecting was the chairman of the commission, John Onken. Because he lives on Stone Pine Lane, he recused himself from the commission’s discussion and decision, and stated his objections from the floor during public comment.

Nevertheless, the other commission members voted unanimously to recommend that the City Council approve the proposal because it fell well within the limits set in the city’s El Camino



Image courtesy of KTG Group Inc.

**An architect’s rendering** shows what the carriage house (left) and two-story residential unit adjacent to Stone Pine Lane (behind) would look like from the front. The Menlo Park Planning Commission recommended that the City Council approve the plan for the former Roger Reynolds Nursery site.

Real/downtown specific plan.

Residents of Stone Pine Lane said that the project would not go far enough in preserving their privacy. Several residences have windows that would face out directly on the development.

Mr. Onken raised concerns about the narrow gap between the proposed development and the back of Stone Pine Lane in the current plans, which in

some places is no wider than 31 feet, he said.

The new townhouse-style residential units would be clustered more densely than the homes on Stone Pine Lane, which is OK for residents who want to live closer together, he said, but added: “What we don’t see as acceptable is that condition imposed on the neighbors.”

Other neighbors echoed Mr. Onken’s sentiments, including

Scott Phillips, Ursula Feusl, Bianca Skubniic and Jason Thrasher, who said their homes would look out directly onto the development, affecting their access to sunlight.

The commissioners said they recommended approval of the project since it is aligned with the specific plan and showed restraint compared to the maximum housing density allowed.

“(It’s) a way, way better project compared to other hypotheti-

cal ones that could be there,” said commission member John Kadwany.

The commissioners made several suggestions, including possibly removing the eighth building, which would be a rebuilt and remodeled version of the existing carriage house on the site, to allow more flexibility to create changes and visual interest in the two-story building that faces Stone Pine Lane. ▣

## Pathways holds award breakfast

Pathways Home Health and Hospice will hold its 25th “One From the Heart” awards breakfast at 7:30 a.m. Thursday, Oct. 29, at the Crowne Plaza Cabana, 4290 El Camino Real in Palo Alto. Over the past 25 years, the event has raised more than \$5 million to fund health care programs.

This year’s featured speaker

## Correction

In a guest opinion on high-speed rail by Morris Brown in the Oct. 21 issue of the Almanac, there was an error with regard to the number of times a crossing gate would come down during peak travel time. Mr. Brown gave us a correction, but the editor failed to make the change for print.

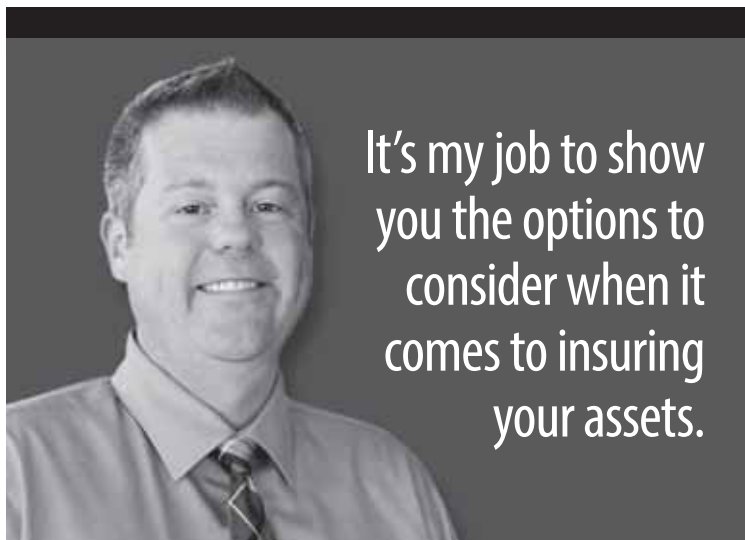
The sentences should have read: The latest plan shows that at peak times, Caltrain would run six trains an hour in each direction and high-speed rail would run four trains an hour in each direction. Thus, during peak travel time, the crossing gates would come down a total of 20 times an hour.

is Michael Krasny, host of KQED’s Forum. Rita Williams, retired news reporter, will be master of ceremonies.

The Leadership in Healthcare Award will be presented to Dr. Richard Slavin, CEO of the Palo Alto Medical Foundation. Pathways Foundation board

chair Mark Kelsey, senior vice president of Pacific Midwest Regional Banking at Wells Fargo, will receive the Leadership in Healthcare Philanthropy Award.

Email [events@pathway-health.org](mailto:events@pathway-health.org) or call (408) 730-1200 for tickets.



Serving the community for over 26 years!

**CHARLIE PORTER**

Farmers® Agency  
License # 0773991

671-A Oak Grove Ave, Menlo Park  
650-327-1313

[cporter2@farmersagent.com](mailto:cporter2@farmersagent.com)

**FARMERS**  
INSURANCE



## NOTICE INVITING BIDS TOWN OF ATHERTON, CA

The Town of Atherton will accept bids for construction of the following public work:

### EL CAMINO REAL & ALMENDRAL AVENUE PEDESTRIAN HYBRID BEACON PROJECT

The work to be completed includes Furnishing and Installing a new Pedestrian Hybrid Beacon and associated improvements such as, but not limited to lighting, signing, striping, ADA compliant pedestrian landing areas and asphalt repair.

Plans & Specifications may be obtained at <http://www.ci.atherton.ca.us/bids.aspx> at no cost. The Contractor shall be responsible for any addendums that may be posted on the Town’s website.

SEALED BIDS will be received at the office of the City Clerk, 91 Ashfield Road, Atherton, California 94027, **until 11:00 a.m.** Pacific Standard Time on **Tuesday, November 10, 2015**, at which time bids will be publicly opened and read aloud.

Bids must be for the entire work, and shall be submitted in sealed envelopes clearly marked: “Bid of (Contractor) for **EL CAMINO REAL & ALMENDRAL AVENUE PEDESTRIAN HYBRID BEACON PROJECT**”, along with date and time of bid opening.

# Woodside: Anonymous campaign blossoms for District 3 council seat

By **Dave Boyce**  
Almanac Staff Writer

**A** brief, vigorous — and largely anonymous — get-out-the-vote effort is underway in Woodside on behalf of businessman and property rights advocate Chris Shaw. A write-in candidate, Mr. Shaw is up against Nancy Reyerer for a seat on the Town Council, but to the extent that it's a campaign, it's one that is "running itself," he said.

Ms. Reyerer is a member of the Architectural Site and Review Board and seen as a pivotal voice in support of an ethic that values wildlife and structures that are subservient to the land. She had been running unopposed.

Since Mr. Shaw announced his candidacy around Oct. 15, yard signs on his behalf have popped up around town, banners have been hung on fences and a widely distributed piece of direct mail was mailed to residents.

Campaign finance laws require such materials to include information on who paid for them, but the materials in support of Mr. Shaw do not have that information. And the laws prohibit a candidate from coordinating his campaign with activities by a committee or person making independent expenditures.

The mailer shows a sample ballot on one side with Mr. Shaw's name written in; on the reverse are his priorities and biographical information, including a family photo — information Mr. Shaw says he did not provide. The data is "undoubtedly from an email my wife sent out to our friends," he said. Neither



Nancy Reyerer



Chris Shaw

he nor his wife were involved in any way in preparing the mailer, he said.

"I'm not fond of (anonymity)," Mr. Shaw said. "I don't think it's a good starting point for civil discourse." But he said he knows people who ask for anonymity because they're afraid of retribution should they bring a project before the Architectural and Site Review Board.

Whether the effort is illegal could depend on how the materials were paid for. If a person or group raises or spends more than \$1,000 on a campaign,

**Candidate says he's 'not fond' of anonymity, but understands fears.**

"they become a committee and then have filing obligations," said Jay Alan Wierenga,

communications director for the state's Fair Political Practices Commission.

The commission does not comment on specific situations, and only the enforcement division can determine whether there's been a violation, Mr. Wierenga said.

Both candidates have filed campaign disclosure forms with the town clerk as required.

Mr. Shaw said that upon learning of the efforts being made on his behalf, he talked with an FPPC representative and with Town Clerk Janet Koelsch to get clarification on his responsibilities.

#### Council comment

Three of the council members — Dave Tanner, Tom Shanahan

and Dave Burow — have said they endorse Mr. Shaw's candidacy. Council members Peter Mason and Anne Kasten said they are not making endorsements, and Councilman Ron Romines is endorsing Ms. Reyerer. Councilwoman Deborah Gordon has not replied to a request for comment.

Mr. Shaw has said that a fourth council member endorses him, but asked for anonymity.

The Almanac wrote to all seven council members asking for comment on the use of anonymous campaign materials. Three replied by the Almanac's press time.

Mr. Mason said of Mr. Shaw: "He is responsible to follow federal campaign laws."

Mayor Shanahan said: "I'm not involved in the actual campaign — I thought election spending had to be reported — at least after the fact by whoever did it?"

Mr. Tanner said he had no comment.

#### Coordination?

The Almanac obtained an Oct. 16 email from Mr. Shaw in which he appears to discuss campaign strategies with residents Annie Kaskade and Greg Raleigh, with copies to eight other recipients: Mr. Tanner, Mr. Shanahan, Mr. Burow, Patty Raleigh, William Fender, Bengt Henriksen, John Hamilton and Carol Hamilton.

"My reaction to flyers is not wanting to 'spam' people," Mr. Shaw wrote. "We cannot put things into mailboxes (illegal) so that leaves us with placing them onto mailboxes/gates etc. which can look like we are selling gardening services. If the trigger has been pulled, so be it — let's roll, but I'd prefer to deploy them carefully to avoid looking desperate/low-brow."

"It is a straightforward decision for the electorate which

shouldn't require too much explanation," he wrote, adding that he could win with 320 to 350 votes.

Asked to comment on whether he was coordinating a campaign, Mr. Shaw said he was not, that he had hit Reply-All but was addressing Ms. Kaskade about the people acting on his behalf. He wrote to ask that they not do anything tacky, he said, noting that nothing he said in the email concerned the content of campaign materials.

Mr. Shaw said he has since decided to form a campaign committee. "If my greatest sin was not getting the form filed before (the campaign) happened, so be it," he said.

Mr. Raleigh said he nothing to do with the campaign. Ms. Kaskade was not available for comment.

Several yard signs in support of Mr. Shaw and placed along Woodside roads were removed by town staff after someone complained about their location in the public right-of-way, a violation of town regulations. The signs were kept at Town Hall until retrieved, but staff probably did not ask who picked them up, Deputy Town Manager Paul Nagengast said.

Ms. Reyerer, for her part, is campaigning. She hosted an open house on Sunday (Oct. 25), for which she mailed out stamped invitations via the U.S. mail. She has a website at reyererforcouncil.com and a profile on LinkedIn, she said. Asked about yard signs or direct mail or Twitter, she replied: "I am available to talk with any voter that has questions and wants more information."

Mr. Shaw said he has no website and isn't planning one, nor has he hosted parties. He is profiled on LinkedIn, he said.

Ms. Reyerer's website includes

a statement on why's she's running, her qualifications and her endorsements. Her endorsers include state Sen. Jerry Hill, current Woodside Councilman Ron Romines, three current or former members of the Planning Commission and three members of the town's Sustainability and Conservation Committee.

#### Write-in legacy

That Mr. Shaw is able to run at all given his late start is a consequence of the Woodside Town Council deciding to hold an election even though the candidates for the four seats were unopposed when the filing deadline passed. Why not cancel the election, as the Portola Valley council did?

In Portola Valley, there were two open seats and two incumbent candidates running for re-election. In August, the council voted to appoint the candidates to new terms in December and save about \$5,000 on election costs, despite foreclosing the possibility of write-in candidates, which was noted before the vote.

The Woodside council had to have an election this year because a majority of seats were open, Town Manager Kevin Bryant said. But it's also a tradition. In 1997, write-in candidate John Blake won a seat on the council. Since then, the council has decided to hold elections, even with no seats contested.

With the advent of social media, things have changed for write-in candidates, former mayor Paul Goeld told the Almanac. The disadvantage of not having your name on the ballot remains, but it's mitigated with social media and online forums, he said.

One factor has not changed: ballots for write-in candidates are counted by hand. It's unlikely that complete election results will be ready on election night, Elections Manager David Tom of the county Elections Office said. And it's unpredictable as to when the count will be finished, he said. ■

## Atherton wants fire district in civic center

Atherton has asked the board of the Menlo Park Fire Protection District to take part in the town's new civic center by housing an emergency response team onsite, beefing up the emergency communications system, reserving a part of a new emergency operations center or even "developing permanent space at the site."

"We want the district to be part of this project," a letter sent by Atherton Mayor Rick DeGolia to fire board head Virginia

#### BRIEFS

Chang Kiraly says.

Ms. Chang Kiraly said the fire board will probably consider the request in November.

#### Pay raise for city manager

Atherton has given City Manager George Rodericks the same 2 percent raise that other non-union employees received, upping his

annual salary to \$203,592. Mr. Rodericks will also receive a \$400 monthly auto allowance and a \$3,000 annual personal technology allowance. The council voted unanimously for the contract changes as part of its consent calendar at its Oct. 21 meeting.

The council also asked the town staff to take a close look at the speed limit on Marsh Road, the scene of a number of recent accidents. "It might be worthwhile for us to reconsider bringing that speed limit down," said

Councilman Bill Widmer.

Councilwoman Elizabeth Lewis said that because much of Marsh Road is in Menlo Park's jurisdiction, the two cities need to work together on changing the speed limit.

#### Higher limits on no-bid contracts

The dollar limits on public works projects in Atherton that can be approved without using a formal bidding process will now be tied to a statewide number set under the Uniform Public Construction Cost Accounting Act. The new limits,

approved Oct. 21, allow open market purchases for less than \$45,000; informal bid purchases between \$45,000 and \$175,000; and formal bids for \$175,000 or more.

Previous limits, set in 2012, allowed open market purchases for up to \$10,000; informal bidding for \$10,000 to \$50,000; and formal bidding for above \$50,000.

Council members unanimously approved the changes; but asked the town staff to let them know how much public works projects were expected to cost so they could ask to have some projects go through the formal bidding process even if under the limits.

## West Menlo Park traffic: Parents fear for kids' safety

By **Kate Bradshaw**  
Almanac Staff Writer

On Labor Day, Laurie Sobel was just minding her business. A resident of Altschul Avenue between Ashton and Gordon avenues, she had just parked after returning from a shopping trip. Her husband and older son, age 11, had gone inside, but her younger son, age 8, was still buckled in his seat.

Suddenly, while leaning into the car to unload a bag, a car hurtling down the street collided with her parked car with enough force to launch it 20 feet, she said. She got a concussion, but said her son was shaken but uninjured.

After the incident, she made a post on Nextdoor, in which she described what happened and encouraged others to be careful. "Luckily, it was not a school day — or there would have been kids on the street," she said.

The post, according to Ms. Sobel's neighbor, Nikki Sokol, was one of the most commented on, with many residents chiming in with their own episodes of dangerously close calls.

To address concerns like Ms. Sobel's and many other parents in West Menlo Park, Menlo Park Councilman Ray Mueller and county Supervisor Don Horsley will host a town hall meeting to gather community feedback and discuss potential solutions to street safety problems. The

meeting will take place at 7 p.m. Monday, Nov. 2, in Cano Hall at Las Lomas School, 299 Alameda de las Pulgas in Atherton.

Expected to attend are Atherton Mayor Rick DeGolia and representatives from the Menlo Park Police Department, the Menlo Park Transportation Department, the San Mateo County Sheriff's Office, the county Public Works Department and the California Highway Patrol.

"It's a rare opportunity to have so many stakeholders together to listen to the public," Mr. Mueller said.

Like Ms. Sobel, Janelle Martin says unsafe driving around the area gives her cause for concern. She often worries about the safety of her 11-year-old daughter, who walks to La Entrada Middle School every day. She says drivers often speed, get distracted by cellphones, become blinded by the bright morning sun, and even run red lights.

"People driving through aren't treating it like they live here," she said.

Other parents say the problem is not just distracted or rushed drivers, but a lack of safe sidewalks, crosswalks, and continuous bike lanes. Ms. Sokol also has children who go to Las Lomas and La Entrada schools. "There's no safe way for kids to walk back and forth to school," she said.

She worries in particular about the children who ride their bikes



### 'Painting Local Beauty'

"Half Moon Bay Blooms" is one of the new pastel and oil paintings by Jan Prisco on display through November at the Portola Art Gallery at Allied Arts Guild, 75 Arbor Road in Menlo Park. Ms. Prisco paints plein air at locations that range from hills of the Peninsula to the flower fields of Half Moon Bay to the ocean views of the Monterey Peninsula. A reception for the artist will be held from 1 to 4 p.m. Saturday, Nov. 7.

along Altschul Avenue and Sharon Road.

"Concerns have been building up for a long time," she said.

She said she'd like to see the city of Menlo Park coordinate with San Mateo County to ensure that sidewalks and bike lanes continue between city and unincorporated county areas, and that the sidewalks that do

exist are adequately maintained.

Anya Hodges, mother of three children, ages 5, 8 and 9, says she's grateful for the bus that can transport her kids to and from school, but she's also trying to teach them that walking or biking to school can be a healthy form of exercise. Unfortunately, she said, "It is very unsafe to do that."

When they do walk to school,

she said, they have to wander through side streets rather than take the direct route along Alameda de las Pulgas. Without crosswalks in many intersections, she said, getting from one side of the street to the other can be a nightmare. When she has tried to cross with her kids, she said, "We almost got run over by a car. Two times." ■



#### TOWN OF PORTOLA VALLEY ARCHITECTURAL AND SITE CONTROL COMMISSIONERS NEEDED

The Portola Valley Town Council is seeking volunteers to serve on the Town's Architectural and Site Control Commission (2 vacancies) through January 2020. The ASCC consists of five members appointed by the Town Council, and meetings are held on the 2nd and 4th Mondays of each month.

The ASCC is charged with the review and approval of design review applications and site development permits, including applications for new homes, second units, larger additions, second story additions, and commercial buildings. In addition, the ASCC provides comments on conditional use permits, subdivisions, variances and other matters referred by the Town Council, the Planning Commission, or Town Staff.

To apply, please submit a letter of interest to the Town Council by 5pm on Wednesday, November 4, 2015. The Town Council will conduct interviews at a regular meeting on November 11, 2015 at 7:00 p.m. If you have questions or would like more information, please contact Planning Director Debbie Pedro at [dpedro@portolavalley.net](mailto:dpedro@portolavalley.net) or (650) 851-1700 x218.

Not long ago, people who needed assistance with activities of daily living faced only two options. One was to depend on (or move in with) a family member. The other was to go into a nursing home. Times have changed and now there's a better way: seniors can live in the comfort of their own homes--with assistance from an hourly or 24-hour professional caregiver who will deliver personalized care that is tailored to their needs.

Call us anytime  
you need  
an extra hand!



(650) 328-1001  
[www.careindeed.com](http://www.careindeed.com)  
890 Santa Cruz Avenue  
Menlo Park, CA 94025



## 155 Sunrise Drive, Woodside Offered at \$3,498,000

### Striking Custom Home with Updated Amenities

Offering truly remarkable views that reach San Francisco Bay, this custom-built 4 bedroom, 3 bathroom home of 4,742 sq. ft. (per seller) features a hillside lot of 4.7 acres (per seller) and seamlessly blends Mid-Century Modern design with spacious living areas, original features, and updated amenities. The striking interior is outfitted with walls of glass, high ceilings, skylights, and dual-zone heating and cooling, while fine, light-filled spaces include a living/dining room ensemble with a fireplace, an airy master suite, and an immense bonus room. Fine features include a wine cellar, a large home office, and an oversized three-car garage, while outdoor highlights include a Zen-inspired gravel court and an expansive wraparound deck with a barbecue. Within this home's scenic Skywood setting, you will be just minutes from popular local attractions like Alice's Restaurant. Thornewood Open Space Preserve and Wunderlich County Park are also close by and provide inviting trails. Excellent schools include Ormondale Elementary (API 923), Corte Madera Middle (API 937), and Woodside High (buyer to verify eligibility).

For video tour & more photos, please visit:

[www.155Sunrise.com](http://www.155Sunrise.com)



Ken DeLeon  
CalBRE #01342140



Michael Repka  
CalBRE #01854880

650.488.7325 | [info@deleonrealty.com](mailto:info@deleonrealty.com) | [www.deleonrealty.com](http://www.deleonrealty.com) | CalBRE #01903224



## 280 Nathorst Avenue, Portola Valley

### Gorgeous Home for Entertaining

Seamless transitions between indoor and outdoor living areas define this pristine 5 bedroom, 5 bathroom home of 5,700 sq. ft. (per county), which occupies a lush lot of approx. 1.28 acres (per county). Solar-equipped and custom-designed, this residence boasts a home automation system, mahogany doors and woodwork, and multi-zoned radiant heating. Centered by an island kitchen that opens to breezy living and dining areas, the interior provides a wall of folding windows that reveals the wide slate terrace. The lower level exhibits a gym, a media room, and a wine cellar, while fine additional features include a seductive master suite, a three-car garage, and a scullery. In this excellent location outside Windy Hill Open Space Preserve, you will be steps away from Roberts Market and Woodside Priory. Corte Madera Middle (API 937) is also within walking distance, while other terrific schools nearby include Ormondale Elementary (API 923) and Woodside High (buyer to verify eligibility).

For video tour & more photos, please visit:

[www.280Nathorst.com](http://www.280Nathorst.com)

Offered at \$5,988,000

**OPEN HOUSE**

**Sunday  
1:30 - 4:30**

**WALTER JAYE***continued from page 3*

There, they received help from the British consulate, but when they moved on to Valencia, the pair “stuck out like a sore thumb.” Mr. Jaye had been, after all, wearing ski pants in Valencia. The railroad police took them to prison, which Mr. Jaye said was similar to San Quentin, where they stayed for six weeks. As instructed, they said they were French Canadian minors, which allowed the British consulate to intervene, even though they didn’t speak English.

After being released, Mr. Jaye was moved from Madrid to Gibraltar, and then to England, where he was able to join the Free French Army. After spending some time training and “fattening up,” he said, he shipped out to North Africa in December 1943.

As part of a French division, which comprised roughly 18,000 troops, Mr. Jaye said, he participated in the liberation of Paris in August 1944. The rationale behind deploying the troops to Paris, he said, was something like, “Hey, you’re French. You go liberate Paris.”

“And we did!” said Mr. Jaye, though not without sustaining significant losses.

After World War II, Mr. Jaye said, he tried to forget the trauma in his past.

“If you’re going to go somewhere to recover from something traumatic,” said his wife, Diana Jaye, “this (Menlo Park) is pretty close to it.”

He returned to France and completed university, then studied in the U.S. as a Fulbright scholar in 1949 at the University of Rhode Island. He began an assistantship at Stanford University in 1951, where he earned a master’s degree in electrical engineering, and soon after began working at SRI in Menlo Park, where he quickly made himself indispensable to top-secret Department of Defense projects, which facilitated his gaining citizenship in 1959. He worked with SRI until July 1992.

“Nobody cared who I was or where I was from as long as I did my job,” he said. “They knew I was an immigrant but that was irrelevant.”

On Saturday, Oct. 14, 2015, he was awarded the Legion of Honour, France’s premier award for service to France, at the French Consul General’s residence in San Francisco. And on Saturday, Oct. 24, he celebrated his 90th birthday (which is actually Oct. 21) at his Menlo Park home with friends and family. ▣

## More groups ask Caltrans to stop spraying herbicides along roads

By **Barbara Wood**

Almanac Staff Writer

Responding to requests from a wide array of local groups, farmers and ranchers, and public officials who have asked Caltrans to stop broadcast spraying herbicides along San Mateo County highways, Caltrans officials have promised to make some changes, starting with a pilot program on Highway 84 between Portola Road in Woodside and the coast.

According to a community notice about the pilot program, Caltrans will continue broadcast spraying herbicides on the westbound side of Hwy. 84 while using mechanical mowing and other manual weed control, including mulching, on the eastbound side.

While the map shows herbicide spraying for a little less than 14 miles from Portola Road in Woodside to El Corte Madera Road past La Honda, Caltrans spokeswoman Gidget Navarro said Caltrans will not spray within the town limits of

Woodside nor at the intersection of Highway 35 and Highway 84. The flier also shows two stretches of the road, near the community of La Honda and near the water reservoir at the intersection of Skyline Boulevard and Hwy. 84 as “no spray” zones.

Ms. Navarro said Caltrans will also continue to honor residents’ “No Spray” signs. She said Caltrans will not spray with 25 feet of driveways in areas where complaints have been received, or within 25 feet of groups of mailboxes or of creeks and waterways.

The flier says the pilot program was developed working with the California Department of Forestry and Fire Protection (Cal Fire). “Caltrans must maintain fire breaks. Overgrown vegetation, combustible vegetation, and lack of fire breaks can contribute to increased fire danger,” the flier about the program says.

### Public meeting

Caltrans has scheduled a public workshop about the pilot program for Thursday, Nov. 5, from 7 to 9 p.m. at La Honda Elemen-

tary School, 450 Sears Ranch Road in La Honda. Officials will be present to answer questions and the public will be allowed to make written comments.

“We are working to partner with the community and we are aware of the community’s environmental concerns,” the Caltrans flier says.

Some members of the local community were less than enthusiastic after hearing about the pilot, however. “They don’t need a pilot project to know how to do this,” said Patty Mayall, who lives off Highway 84 near La Honda in unincorporated San Mateo County, and has been trying to stop herbicide spraying for years. “A lot of people are pretty angry that Caltrans is spraying in November, which will be the third time they’ve sprayed this year,” she said.

Residents are also angry that Caltrans does not put up warnings when it sprays. “It is outrageous that Caltrans refuses to post on-road notifications

See **SPRAY**, page 14



**EXTRAORDINARY  
FUTURES**

## Admissions Open House

Sundays, November 1st and December 13th | 1:00pm-3:30pm

RSVP: [kehillahrams.eventbrite.com](http://kehillahrams.eventbrite.com) or

to our Admissions Director, Marily Lerner, [mlerner@kehillah.org](mailto:mlerner@kehillah.org)

3900 FABIAN WAY, PALO ALTO | 650.213.9600 | [KEHILLAH.ORG](http://KEHILLAH.ORG)



## Expert care at your fingertips

At the Palo Alto Medical Foundation, we recognize that your health is precious and so is your time. That's why we provide convenient online services so you can schedule appointments, refill prescriptions and check lab results – anytime, anywhere. We also offer extended hours, same-day visits and world-class specialists in your neighborhood. It's another way you get more than expert care, you get a partner.

844-729-8134  
[pamf.org/findadoctor](http://pamf.org/findadoctor)

 **Sutter Health**  
Palo Alto Medical  
Foundation  
**We Plus You**

# Caltrans plans to pilot program on Highway 84

## SPRAY

continued from page 12

warning all users on the road and residents," Ms. Mayall said.

Citing environmental and health concerns, San Mateo County in 2012 stopped broadcast spraying herbicides on county-maintained roads. At the time, Caltrans said it might do the same, but it has not done so.

## Protests

After Caltrans sprayed alongside Skyline Boulevard and Highway 84 earlier this year, protests began pouring in.

The list of those who have recently asked Caltrans to stop broadcast spraying herbicides along San Mateo County roadways includes the Midpeninsula Regional Open Space District, Peninsula Open Space Trust, Loma Prieta Chapter of the Sierra

Club, Santa Clara Valley Chapter of the California Native Plant Society, Committee for Green Foothills, South Skyline Association, Silicon Valley Bicycle Coalition, and the Vida Verde Nature Education program.

A total of 17 farms and ranches have joined the call to stop spraying, including Pie Ranch, Tom-Kat Ranch/LeftCoast GrassFed, Markegard Family Grass-Fed and Jacobs Farm.

At [tinyurl.com/change320](http://tinyurl.com/change320), a Change.org petition asking for a stop to the spraying had more than 370 signatures as of Oct. 25.

Lennie Roberts, a Ladera resident and legislative advocate for the Committee for Green Foothills, said the Sept. 14 meeting at which the pilot program was announced was organized by state Sen. Jerry Hill and included, from Caltrans District 4, director Bijan Sartipi, deputy director

Nader Eshghipour, and public information branch chief Bob Haus. Others attending were San Mateo County Supervisor Don Horsley; staff members representing state assembly members Kevin Mullen and Rich Gordon, Silicon Valley Bicycle Coalition board member Peter Ingram, Ms. Roberts and Sen. Hill.

Ms. Roberts said Director Sartipi introduced the pilot program at the meeting and told the group it will last at least two years. He told them Caltrans is responding to the requests to stop spraying, and has started mapping resources and sensitive habitats along San Mateo County highways.

## Letters

Among the letters sent to Caltrans was one from Shiloh Ballard, president and executive director of the Silicon Valley

Bicycle Coalition, dated Aug. 28.

"Many of our 2,800 members enjoy bicycling along State Routes 1, 35, 84 and 92, where there is often limited space between the travel way/bike route and the edge of the road," the letter says. "Current spraying practices can create plant material that a bicyclist must veer into the roadway to avoid, creating a potentially dangerous situation."

A letter signed by 17 San Mateo County farmers and ranchers is dated Aug. 24. "We strongly support mowing, brushing, and other non-toxic methods to maintain the roadsides," the letter says. "Many of us are certified organic farmers. Our livelihood depends upon maintaining our organic certification. We have concerns about potential injury by these chemicals to our livestock, crops, and apiaries, either from spray drift or leaching through soil."

The letter also expresses concern with water being polluted with herbicides. "Our farms and ranches also depend upon creek and stream water for livestock and crop irrigation," it says. "These chemical can persist in soils and be carried from roadside ditches into creeks where they can impact all downstream water users, including native wildlife."

Another letter is from Sean and Laura Sears, co-founders of the Vista Verde Nature Education program in San Gregorio. "Vista Verde brings inner city kids from throughout the San Francisco Bay Area to the San

See **SPRAY**, page 18

## Jail sentence for former secretary at MP seminary

By **Dave Boyce**  
Almanac Staff Writer

**E**velyn D. Vallacqua, a former secretary at St. Patrick's Seminary in Menlo Park, was sentenced Oct. 16 to 90 days in San Mateo County jail in connection with charges of embezzling money from the seminary.

The sentence was part of a May 2014 bargain in which she pleaded no contest to one count of embezzlement and agreed to give "truthful testimony" at a trial of her supervisor and co-defendant, former seminary finance director Jennifer Margret Morris, who faced embezzlement charges.

That trial was never held. Ms. Morris, the former finance director who was accused of embezzling tens of thousands of dollars from the seminary, pleaded no contest to three counts of felony embezzlement, and was sentenced in August to nine months in county jail and five years of probation.

Ms. Vallacqua, 47, was accused of assisting Ms. Morris by issuing improper reimbursement checks, prosecutors said.

Ms. Vallacqua was also placed on three years of supervised probation and must pay \$21,542 in restitution to the seminary, prosecutors said.

Ms. Morris had been issued a credit card for seminary business, but was accused of using her own credit card for over \$166,000 in seminary-related purchases over six years — and reimbursing herself from seminary funds — in order to accumulate airline miles, prosecutors said.

Seminary purchases were in fact being made with Ms. Morris' credit card and everyone at the seminary knew it, Ms. Morris' attorney, Elliot Silver, said. It was a work-around since the seminary could not get a card with the credit limit it needed, he said. ▣

## Judy Lee Phillips

July 18, 1944 – October 16, 2015

Judy Lee Phillips, 71, of Greensboro, Georgia, passed away on October 16, 2015 with her beloved daughters by her side after a short battle with metastatic melanoma.

Judy was born on July 18, 1944 in Horton, Kansas, the daughter of Ernest and Ethel (Carter) Meerpohl, and spent her childhood in northeastern Kansas. She graduated from Concordia High School in 1962 before attending Kansas State University, where she pledged Kappa Alpha Theta. After graduating from K State in 1966, she became a flight attendant for Pan Am and was based in San Francisco, California. She met her husband, David Harrison Phillips, while living in the same apartment building there, and they married on September 2, 1967. They raised their family in Atherton, California, where Judy spent many years as a tireless and dedicated volunteer at her daughters' schools. She eventually returned to the workplace as a librarian, and later a high school treasurer, for the Sequoia Union High School District. David passed away in 2006 after 38 years of marriage.

Judy relocated in 2008 to the Reynolds Plantation community in Greensboro, Georgia, where she enjoyed golfing and hosting family and friends at her lake home. She spent her summers in Pearl, Colorado, living in a remote cabin that has belonged to her family for more than fifty years. Judy was an avid reader who enjoyed being a member of book clubs both in California and Georgia. She also loved to travel, recently having journeyed with family to the Galapagos Islands and the Amazon rainforest. Judy was a thoughtful and genuine person who extended her kindness to everyone she met, and she leaves behind many close friends and relatives who will miss her dearly. Her greatest joy in life, however, was her role as "Grandma Judy."

Judy is survived by her two daughters, Elizabeth Phillips Kelley (Sean) of Oak Park, Illinois, and Ashley Phillips Frieden (Chris) of Atlanta, Georgia, and five grandchildren: Griffin, Maggie and Quinn Kelley; and Carter and Colby Frieden. She was preceded in death by her husband, David, and her parents, Ernie and Ethel Meerpohl.

A private Celebration of Life gathering will be held for close friends and family. Memorial contributions may be directed to the Melanoma Research Foundation or the Kansas State University Foundation. Arrangements by H. M. Patterson & Son, Spring Hill, Atlanta, Georgia.



PAID OBITUARY

## Joyce Christenson

March 28, 1938 – September 30, 2015

Resident of Los Altos

Joyce G. Christenson passed away peacefully in her home on September 30, 2015. She was 77.

Joyce was born on March 28, 1938, to Clyde and Bertha Gochnour, of Burley, Idaho, and was the youngest of eight children. She graduated from Burley High School and subsequently attended the University of Utah, where she studied Elementary Education and music. Joyce was also a flutist in the Marching Ute Band and university orchestra. She received her Bachelor of Science degree in 1960. After graduation, Joyce moved to San Diego to teach in elementary school. She married Wayne C. Christenson in 1961 and soon thereafter began raising a family. The family eventually relocated first to the Los Angeles area before moving to Terra Bella, California, in 1972. Joyce served in the Terra Bella United Presbyterian Church as a Deacon and Elder and was active in literacy tutoring.

Joyce served as a teacher at the Porterville Development Center for several years during her time of residence in the Central Valley. Joyce and Wayne both retired from their careers in 1988 and moved to Springville, California, where they could continue their shared passion for gardening and participation in Heifer International, seeking to end hunger throughout the world by providing livestock and agricultural education to the under resourced. In 1999 Joyce and Wayne moved to Los Altos. Joyce continued her lifetime passions for music, gardening, travel, and service both locally and abroad. She was a Deacon of the Menlo Park Presbyterian Church and was involved in leadership and scholarship in P.E.O. Chapter D.C.

Joyce is survived by her loving husband, Wayne, daughter Martha (John) Blaha, son Dwight (Heather) Christenson, granddaughters Emily, Sarah, Anne, and Grace Blaha, and Chelsea Dunn and Bethany Christenson. She will be remembered by her family for her gratitude to God for the gift of His son Jesus, the joy she took each day from the beauty of the world around her, the relationship of friends both near and far, and the constant love and companionship of her devoted husband Wayne.

A memorial service will be held at 2 p.m. on Friday, October 30, at Menlo Park Presbyterian Church, 950 Santa Cruz Avenue, Menlo Park California. In lieu of flowers, the family requests that donations may be made to the Joyce Christenson Tribute Fund of Heifer International by calling (501) 513-2455, or to the P.E.O. Star Scholarship Fund at [www.peointernational.org](http://www.peointernational.org).



PAID OBITUARY

# William Martin, former Kiwanis Club president

A memorial service for William Martin of San Mateo will be held at 10:30 a.m. Saturday, Nov. 7, at Peninsula Covenant Church, 3560 Farm Hill Blvd. in Redwood City.



William Martin

Mr. Martin, who founded Martin Wealth Management in downtown Menlo Park, died Oct. 1 at the age of 72.

Mr. Martin was active in many organizations and a leader through Inter-Varsity Fellowship and several churches. He served as president of Business Networking International in Menlo Park, as president of the Menlo Park Kiwanis Club, and board member and chairman of the Peninsula Hospital District.

While recognized with many awards, he never volunteered to recount his accomplishments, whether as a server in a soup kitchen or as a Sunday school teacher, say family members.

His wife, Patricia, and daughter, Laura Martin Miri, worked alongside him in Martin Wealth Management. His son, John C. Martin, had law offices in the same building. Daughter Diana Toppelhofer also operated her photography business there.

He is survived by his wife of 45 years, Patricia; children John C. Martin, Diana Toppelhofer and Laura Miri; and

## OBITUARIES

Obituaries are based on information provided by the family.

two grandchildren.

Memorials in Mr. Martin's name may be made to the African Inland Mission, Ministry of John and Maureen Becker, P.O. Box 3611, Peachtree City, GA.; or to Open Door Church, 4150 Piccadilly Lane, San Mateo, CA.

## Charles M. Horvath, owner of 'The Jeweler'

Charles M. Horvath, long-time resident and owner of The Jeweler in downtown Menlo Park, died Oct. 15 in the family home. Born in Budapest, Hungary, he was 69.



Charles Horvath

Mr. Horvath was a master jeweler, artist and an avid soccer player, playing well into his 60s. He was known for his sense of humor, generous spirit and quick wit, family members say.

He is survived by his wife of 45 years, Mercedes; sons, Marshall and Dennis; daughter Mercedes; and three grandsons. Messages and condolences may be sent to the family at horvathman@yahoo.com or (720) 204-6100.



Photo by Kate Daly

Woodside Community Foundation board members are, from left, Jim Milton (secretary), Rick DeBenedetti, Quentin Cooper (president), Diane Talbert, Noel Perry, and Rob Flint (treasurer).

# Foundation launches website

Woodside Community Foundation board members and friends gathered recently at the Woodside home of Kerry and Rick DeBenedetti to welcome new board member Diane Talbert and celebrate launching the foundation's new website.

Ms. Talbert joined the board last spring, bringing a background in real estate and past experience from serving on the board of the Woodside High School Foundation. She currently serves on the Sempervirens Fund board.

For more than 60 years the volunteer group has acted as a fiscal agent to promote local

educational, recreational and beautification projects.

Woodsidegiving.org, the new website, is designed to simplify collecting donations and bequests from individuals and organizations supporting projects that have ranged from Woodside Community Theatre productions to Barkley Field and

Park construction, Folger Stable preservation, and the establishment of the Woodside Community Museum.

An upcoming project is reseeded native wildflowers along Woodside Road on Village Hill.

— Kate Daly

## Someone breaks into home, makes off with SUV

Atherton police say someone broke into a home on McCormick Lane sometime between 4 p.m. Friday, Oct. 23, and 10:35 a.m. Sunday, Oct. 25, grabbed a car key and made off with a red Mercedes SUV parked in the driveway.

Someone threw a rock through a side window and was able to open an adjacent side door from the inside, police said.

The key to the 2014 Mercedes GLK 350 SUV (California license number 7CXA250) was inside the house. Police said nothing else appears to be missing from the house.

Police ask anyone who sees the vehicle or has other information to contact the Atherton Police Department at (650) 688-6500.



## TOWN OF PORTOLA VALLEY PLANNING COMMISSIONERS NEEDED

The Portola Valley Town Council is seeking volunteers to serve on the Planning Commission (2 vacancies) through January 2020. The Planning Commission consists of five members appointed by the Town Council, and meetings are held on the 1st and 3rd Wednesdays of each month.

The Planning Commission is responsible for addressing policy matters related to general land use and development in Town. The commission provides recommendations to the Town Council on legislative actions such as amendments to the Zoning Code and the General Plan. In addition, the commission reviews and acts on certain types of applications, such as conditional use permits, subdivisions and variances as well as reviewing appeals of ASCC and administrative staff decisions.

To apply, please submit a letter of interest to the Town Council by 5pm on Wednesday, November 4, 2015. The Town Council will conduct interviews at its regularly scheduled meeting on November 11, 2015. If you have questions or would like more information, please contact Planning Director Debbie Pedro at dpedro@portolavalley.net or (650) 851-1700 x218.

## Diana Mary Thurman

April 26, 1937 – October 19, 2015

Diana Mary Thurman passed away peacefully at her Menlo Park home on Monday, October 19th following a courageous battle with cancer, at the age of 78. She was surrounded by close family and friends. Born in San Francisco in 1937 to Italian immigrants, Diana attended Presentation High School (Class of 1955) where she acquired close friendships that lasted her entire lifetime. She moved to the Peninsula in 1962, eventually purchasing her home in Menlo Park in 1971, where she continued to live for 44 years.



Diana worked for Macy's for many years before becoming self-employed, then retired in the early 1990's. She lived an active, healthy lifestyle and attended Aqua-Fit water aerobics classes at Menlo Park Rec Center several times each week for nearly 20 years. She was also an active volunteer at Nine Lives cat shelter in Redwood City as well as in the surgical recovery unit at Kaiser Hospital in Redwood City.

Diana leaves behind an enormous number of people who loved her and is survived by her daughter Sheryl Samuels, brother David Desideri, niece Jennifer Desideri, grandchildren Courtney Clark and Chris Clark (Evelyn), five great-grandchildren (Christian, Kaylyn, D'Andre, Adrianna, Sienna), and her beloved cat "Yoshi". She will be most remembered for her ability to light up any room with her vibrant personality and beautiful sense of humor.

Her family wishes to thank the many people who remained by her side during her illness, as well as the Kaiser Cancer Treatment Center, Kaiser Oncology Department, and Kaiser Palliative and Hospice care teams. A Celebration of Life in Diana's honor will be held in the Sequoia Room at the Arrillaga Family Recreation Center at 701 Laurel St., Menlo Park, CA on Saturday, November 7 at 3pm. In lieu of flowers, the family kindly requests that donations in Diana's name be made to The American Cancer Society (cancer.org/donate).

PAID OBITUARY

NEWSROOM

**Editor**  
Richard Hine (223-6525)

**Associate Editor**  
Renee Batti (223-6528)

**Staff Writers**  
Dave Boyce (223-6527),  
Kate Bradshaw (223-6588)  
Barbara Wood (223-6533)

**Contributors** Jane Knoerle,  
Marjorie Mader, Kate Daly

**Special Sections Editor**  
Brenna Malmberg (223-6511)

**Photographer** Michelle Le (223-6530)

DESIGN & PRODUCTION

**Marketing and Creative Director**  
Shannon Corey (223-6560)

**Design and Production Manager**  
Kristin Brown (223-6562)

**Designers** Linda Atilano, Diane Haas,  
Rosanna Leung, Paul Llewellyn,  
Nick Schweich, Doug Young

ADVERTISING

**Vice President Sales and Marketing**  
Tom Zahralis (223-6570)

**Display Advertising Sales**  
Janice Hoogner (223-6576)

**Real Estate Manager**  
Neal Fine (223-6583)

**Legal Advertising**  
Alicia Santillan (223-6578)

ADVERTISING SERVICES

**Advertising Services Lead**  
Blanca Yoc (223-6596)

**Sales & Production Coordinators**  
Diane Martin (223-6584), Kevin Legarda  
(223-6597)

Published every Wednesday at  
3525 Alameda De Las Pulgas,  
Menlo Park, CA 94025

**Newsroom:** (650) 223-6525  
**Newsroom Fax:** (650) 223-7525

**Advertising:** (650) 854-2626  
**Advertising Fax:** (650) 223-7570

**Email news** and photos with captions to:  
Editor@AlmanacNews.com

**Email letters** to:  
letters@AlmanacNews.com

The Almanac, established in October 1965, is delivered each week to residents of Menlo Park, Atherton, Portola Valley and Woodside and adjacent unincorporated areas of southern San Mateo County. The Almanac is qualified by decree of the Superior Court of San Mateo County to publish public notices of a governmental and legal nature, as stated in Decree No. 147530, issued December 21, 1969. ©2015 by Embarcadero Media. All rights reserved.

Subscriptions are \$60 for one year and \$100 for two years. Go to [AlmanacNews.com/circulation](http://AlmanacNews.com/circulation).



WHAT'S YOUR VIEW?

All letters must include a home address and contact phone number. Published letters will also appear on the web site, [www.TheAlmanacOnline.com](http://www.TheAlmanacOnline.com), and occasionally on the Town Square forum.

**Town Square forum**  
Post your views on the Town Square forum at [AlmanacNews.com](http://AlmanacNews.com)

**Email** your views to:  
[letters@almanacnews.com](mailto:letters@almanacnews.com) and note this it is a letter to the editor in the subject line.

**Mail** or deliver to:  
Editor, The Almanac  
3525 Alameda de las Pulgas  
Menlo Park, CA 94025

**Call** the Viewpoint desk at  
223-6528.

# Viewpoint

IDEAS, THOUGHTS AND OPINIONS ABOUT LOCAL ISSUES

## Woodside needs to take broad look at process for reviewing building plans

By Steve Lubin

*At its Oct. 13 meeting, the Woodside Town Council considered changes to the town's ordinances regarding the process of architectural review. I read the following statement at that meeting. The revised ordinance was scheduled to be introduced for adoption at the council's Oct. 27 meeting. At least one additional meeting will be required for final adoption.*

> Go to [tinyurl.com/staff107](http://tinyurl.com/staff107) to see the staff report for the Oct. 27 meeting.

In 1956, when the Town was incorporated, there was tremendous pressure to subdivide Woodside into one-acre lots. My parent's generation had the vision to preserve the "rural" nature of Woodside by incorporating the town and changing the zoning from one acre as it was under the county to three acres.

The extraordinary environment we live in today is the result of that vision. The extraordinary property values we see today are also the result of that vision and the 60 years of restrictive zoning that have maintained it.

In 1956 the threat to the rural vision of Woodside was subdivisions. Today, the threat to the vision is out-of-scale building and excessive change to the landscape. A government run by citizens

is the other great tradition established by the founders of the town. It is a tradition that requires sustained involvement by a broad range of townspeople.

Sadly, this tradition has eroded over the years. More and more, we expect hired hands to do our work for us and heaven help them if they don't follow our every whim.

Because of the tremendous pressure we currently see on the town, design review is necessary to protect the character of the town. By its nature design review is subjective. This subjective act is essentially political. Representative citizens should make political decisions, not staff.

If many of these subjective decisions about visible projects are directed to staff as the council has proposed, unnecessary pressure and complaints will be directed toward the staff. The same people who are now complaining about the ASRB (the Architectural & Site Review Board) will be back complaining about the staff.

This pressure will destabilize the workings of the town and result in frequent turnover and an inexperienced staff. This scenario has played out in the past and does not lead to better permit processing.

We now have an experienced, dedicated and capable staff and should be very careful about

exposing them to pressures that should be borne by citizen representatives.

I have been involved, as an architect, in four building projects in Woodside during the past year. Two of these projects involved ASRB review. No one needs to tell me there is a great deal of frustration with the process of obtaining a building permit in Woodside.

If anyone had asked, I could

Steve Lubin is a Woodside architect and 66-year Woodside resident who has been involved in Woodside planning matters since 1976, including seven years as a planning commissioner.



stand or ignored the Design Guidelines. Often these applicants return for re-review with projects that have changed very little if at all. If we only listen to the complaints of those who don't understand or don't agree with the design guidelines, there is no point in having a review process.

On the other hand, I have seen applicants whose eyes were opened by comments of the ASRB and who thanked the board for helping them improve their projects.

It is a mistake to pick out this one aspect of town process without looking at the broader picture of what is causing so much unhappiness. The ASRB is not the root of the problem. It should not be confused with the raft of requirements before and after ASRB review.

The town needs to undertake a broad look at the permitting process and discover what the actual problems are. Removing the last vestiges of citizen involvement and replacing it with a new bureaucratic step is not the way to streamline the process.

I suggest that a disinterested party be engaged to undertake interviews of recent applicants and find out what is causing the frustration rather than respond

See **WOODSIDE** page 18

### LETTERS

Our readers write

#### Correction

Editor:

I just read your story about the Oct. 13 Woodside Town Council meeting and think that your characterization of my statement at the meeting was not accurate. I re-read my statement and can't find anywhere where I said "complaints about the ASRB are not the fault of the ASRB." (The ASRB is Woodside's Architectural & Site Review Board.)

The theme of what I said is that the permitting process in Woodside *is* very frustrating, but the ASRB is only a small part of the string of frustrations. Rather than picking ASRB changes as the answer to reducing these frustrations, the town should look at the entire process and come up with

a comprehensive fix.

Using the loaded phrase "called out" in reference to the people who don't like the guidelines also gives an inaccurate impression of my statement. My statement said that we should not listen *only* to those who do not understand or agree with the guidelines, but take a look at the bigger picture.

You also characterize me as the husband of an ASRB member. I also am a 66-year Woodside resident and have been involved in Woodside planning matters since 1976, including seven years as a planning commissioner. I have held membership in dozens of town committees, including the Town Hall Committee, which oversaw the construction of Town Hall, the ASRB (for four years), the Trails Committee, several Town Center committees and the Bicycle Committee.

Steve Lubin  
Palm Circle Road, Woodside

#### Drones ruining park's calm

Editor:

I am a 40 year resident of Menlo Park, and have walked at Bayfront Park for years. Recently, in the last few years, I no longer can walk there peacefully, doing what the park was set up for, which is "passive recreation."

The noise and physical intrusion from the hobbyists ruin the enjoyment. My husband and I have been followed over the trails, watched dogfights between several drones over the tree tops, seen huge gatherings, with banners included announcing where drone fliers were to meet, seen geese routed by the helicopter that has taken over a large field, seen hawks harassed and followed by a drone, you get the picture.

Due to the increased noise from the environment we live

in (we live in the Willows) I now wear earplugs to bed to drown out the airplanes, sirens, freeway traffic, not to mention the many two-stroke engines that the city allows the gardeners to use. The Baylands was one of the few places we could go as a respite from the environmental barrage we endure.

Please read the charter for the park. The words "passive recreation" do not include noise that is so loud you cannot block it out, not to mention the supreme rights of the thousands of birds that inhabit the park. In my opinion, their rights come first, as well as the thousands of families that walk there, before the handful of hobbyists that want to fly their machines there. If you have not walked the trails there, please do so. It is a resource worth preserving.

Barbara Phillips  
Laurel Avenue, Menlo Park

# UNPARALLELED IN CENTRAL ATHERTON



## 247 ATHERTON AVENUE, ATHERTON

This estate property was built in 2007 with inspiration from villas in the European countryside. Presiding over approximately one acre, the home's Mediterranean style is immediately apparent with its tiled roof, wrought iron accents, and a tiered fountain outlined in mosaics. Inside, the timeless allure combines the consummate appeal of modern luxury with everything imaginable for the quintessential California lifestyle. Hand-hewn hardwood or antiqued limestone tiles finish the floors of every room, ceilings are architecturally detailed, and graceful arches span room openings, windows, and French doors. Completing the appeal of this special property is its premier location in the heart of central Atherton – one of the most exclusive cities in the country.

- Three-level European villa built in 2007
- Total of 5 bedrooms, library, bonus room, 7 full baths, and 2 half-baths
- Main residence with 4 bedrooms, 5 full baths, and 2 half-baths
- Guest house with 1 bedroom, 1 bath, fireplace, and kitchen
- Lower-level recreation/media room, full bar, plus wine cellar and tasting room
- Hand-hewn hardwood or antiqued limestone flooring throughout
- Resort-inspired grounds with fireplace, barbecue kitchen, bocce court, pool, and spa
- Approximately one acre of beautifully landscaped grounds
- 4-car garage with full bath
- Top-rated Menlo Park schools

**Offered at \$12,880,000**

**[www.247Atherton.com](http://www.247Atherton.com)**



This information was supplied by Seller and/or other sources. Broker believes this information to be correct but has not verified this information and assumes no legal responsibility for its accuracy. Buyers should investigate these issues to their own satisfaction.

**HUGH CORNISH**

650.566.5353

[hcornish@cbtnorcal.com](mailto:hcornish@cbtnorcal.com)

CalBRE# 00912143

[hughcornish.com](http://hughcornish.com)



**VALERIE SOLTAU**

650.464.3896

[valeriesoltau@gmail.com](mailto:valeriesoltau@gmail.com)

CalBRE# 01223247

[valeriesoltau.com](http://valeriesoltau.com)





**Resolution No. 1956 (2015)**  
**RESOLUTION OF INTENTION TO ANNEX CERTAIN TERRITORY TO THE WEST BAY SANITARY DISTRICT**  
**ON-SITE WASTEWATER DISPOSAL ZONE**

Lands of Van Shadow Stables, LLC

The District Board of West Bay Sanitary District finds and determines as follows:

- A. This Resolution of Intention is adopted pursuant to the District's "Zone Master Annexation Resolution" ("ZOMAR"), which was adopted by the District Board August 12, 1996. The provisions of ZOMAR are incorporated by reference into this Resolution of Intention.
- B. The District has received an application to annex a parcel of real property (the "Parcel") to the District's On-Site Wastewater Disposal Zone (the "Zone"). The Parcel is described in Exhibit "A" attached to this Resolution of Intention and the description contained in the Exhibits are incorporated by reference. The name and address of the applicants and the number, type, volume and location of on-site wastewater disposal systems which are proposed to operate on the parcels to be annexed are described in Exhibit "B" attached to this Resolution of Intention and the information contained in the Exhibit are incorporated by reference.
- C. The applicants have demonstrated to the satisfaction of the District Board that the Parcel constitutes "real property" for the purposes of Section 2(b) of ZOMAR in that:
  - X All of the conditions described in Subsections i., ii., iii., iv. and v. of ZOMAR Section 2(b) are satisfied; or
 Other conditions exist which demonstrate that the Parcel will benefit directly or indirectly from the activities of the Zone. If applicable, those conditions are also set forth in Exhibit "B" and are incorporated by reference.
- D. All of the conditions and requirements of ZOMAR Sections 2(a), 2(c), 2(d) and 2(e) have been fully satisfied.

In consideration of the foregoing findings and determinations,

**IT IS RESOLVED** by the District Board as follows:

- 1. It is the intention of the District Board to annex the Parcel to the Zone pursuant to the provisions of ZOMAR and applicable provisions of law.
- 2. In conjunction with a meeting of the District Board to be duly and regularly called and conducted, the Board will conduct a Public Hearing for the purpose of considering all matters pertaining to this Resolution of Intention.

The time, date and place of the Public Hearing are:

Date: November 4, 2015  
 Time: 5:30 PM  
 Place: West Bay Sanitary District Offices  
 500 Laurel Street  
 Menlo Park, CA 94025

At the Public Hearing, all interested persons will be heard.

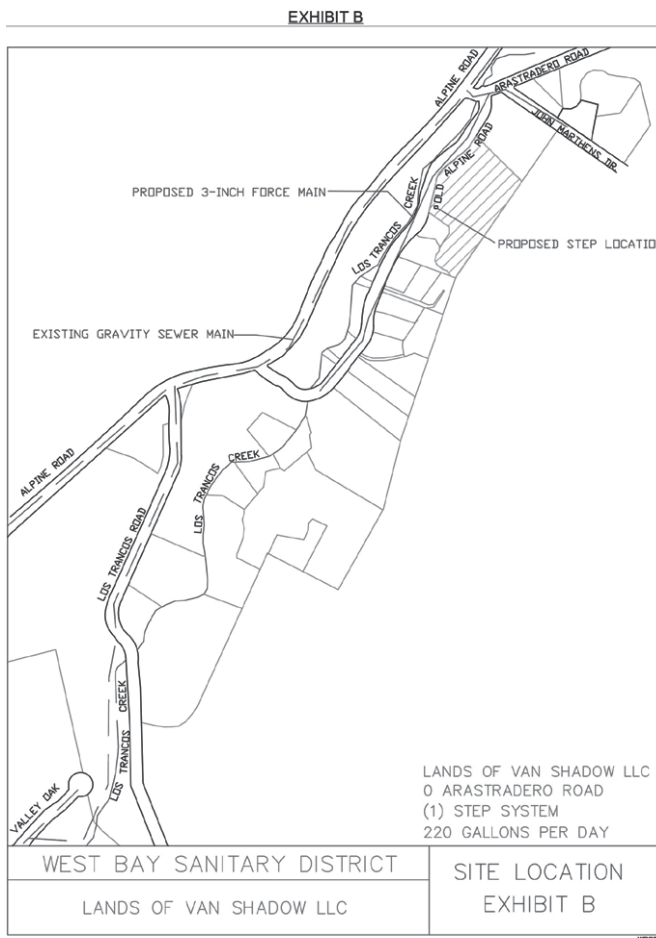
- 3. This Resolution of Intention shall be published and copies shall be delivered to the persons and entities as specified in ZOMAR Section 2(e)(i).
- 4. A true copy of this Resolution of Intention shall promptly be filed for record in the office of the County Recorder of the County of San Mateo.
- 5. The District Manager shall cause the matters set forth in Sections 3 and 4 of this Resolution of Intention to be completed as directed.

**EXHIBIT "A"**

All that certain real property, situate in Unincorporated Area of Santa Clara County, State of California, being all of the Lands of Wong and Toh as described in that certain Grant Deed recorded July 23, 2009 as Document No. 20349352 and Lands of Van Shadow Stables, LLC as described in that certain Grant Deed recorded Dec. 17, 2013 as Document No. 22473459, Santa Clara County Records and Being a Portion of the Rancho El Corte De Madera more particularly described as followed:

Beginning at a point lying on the Southerly line of said Lands of Wong and Toh, said point being North 71°59'40" West 97.23 feet from the southernmost corner of the said Lands of Wong and Toh, also being a point on the existing West Bay Sanitary District Boundary as established by "2002 Sphere of Influence Amendment and Annexation";

- Thence (1) along the Southerly line of last said lands and continuing along the existing West Bay Sanitary District Boundary North 71°59'40" West, 167.00 feet;
- Thence (2) continuing along the Southerly line of last said lands and leaving the existing West Bay Sanitary District Boundary North 71°59'40" West, 167.00 feet;
- Thence (3) North 57°41'14" West, 65.29 feet to the centerline of Los Trancos Creek and to a point on the existing West Bay Sanitary District Sphere of Influence (S.O.I.) Boundary;
- Thence (4) along said centerline and West Bay Sanitary District S.O.I. Boundary, North 28°31'16" East, 14.71;
- Thence (5) North; 41°33'46" East, 117.20 feet;
- Thence (6) 46°17'05" East, 108.43 feet to the most Northern corner of said lands of Wong and Toh;
- Thence (7) leaving said centerline of Los Trancos Creek and the West Bay Sanitary District S.O.I. Boundary along the Northerly line of said lands of Wong and Toh, South 57°41'14" East, 109.85 feet;
- Thence (8) South 82°13'14" East, 107.69 feet;
- Thence (9) South 33°33'11" East, 86.91 feet to a point on said Lands of Van Shadow Stables, LLC;
- Thence (10) leaving the boundary of said Lands of Wong and Toh and continuing along the Lands of Van Shadow Stables, LLC, North 25°30'46" East, 139.23 feet;
- Thence (11) North 10°32'46" East, 24.07 feet;
- Thence (12) North 57°41'14" West, 282.54 feet to the centerline of Los Trancos Creek and to a point on the existing West Bay Sanitary District S.O.I. Boundary;
- Thence (13) along said centerline and West Bay Sanitary District S.O.I. Boundary, North 12°19'16" East, 57.44 feet;
- Thence (14) North 29°56'56" West, 95.96 feet;
- Thence (15) North 17°04'16" East, 118.88 feet;
- Thence (16) North 45°08'16" East, 158.59 feet;
- Thence (17) North 47°08'06" East, 198.52 feet;
- Thence (18) North 32°00'00" East, 100.00 feet to the most Northern corner of said lands of Lands of Van Shadow Stables, LLC;
- Thence (19) leaving said centerline of Los Trancos Creek and the West Bay Sanitary District S.O.I. Boundary and continuing along the Northeasterly line of last said Lands of Van Shadow Stables, LLC, South 48°00'27" East, 576.28 feet to a point on the existing West Bay Sanitary District S.O.I. Boundary;



**SPRAY**

continued from page 14

Mateo coastsides," the letter says. "We want to ensure that our 10-year-old visitors have the healthiest possible environment, including eliminating any exposure to pesticides."

A letter from the Committee for Green Foothills, signed by Ms. Roberts, says: "San Mateo County's natural habitats are home to over 40 endangered or threatened species or species of special concern. We all need to do everything possible to ensure these species survive and that human health is not compromised."

The letter urges Caltrans to stop spraying herbicides in the county. "The people and critters of San Mateo County," it says, "will be eternally grateful." ■

**WOODSIDE**

continued from page 16

to the vague outrage that seems to be driving this current rush-rush process.

**Current proposal**

The reduction of the size of the ASRB is a misguided attempt to reduce citizen involvement. Since the proposed review by the zoning administrator involves a public hearing, there will be very little reduction of the effort required by the applicant. What is the advantage for the applicant?

I agree that many projects now go to ASRB which do not have to be there.

We could develop standards for fences and small buildings within which no design review at all is needed. This would actually simplify the application process, and encourage applicants to design projects that conform to the design standards.

The proposal to eliminate any review of buildings on ridgelines is not listed in the discussions by the ASRB and Planning Commission. Where did this come from? These are among the most important sites to review and it appears there has been no public discussion of the issue.

I don't see where these changes will create a significant advantage to applicants but it will greatly damage citizen involvement in town government.

The proposed changes are not the result of careful study and deliberation but rather a rushed, top-down attempt to push through poorly considered changes that will damage the town and not result in an easing of the burden on applicants.

I encourage the council to take no action on the proposal before it and start over, using a rational process to discover what the real frustrations are in the permitting process.

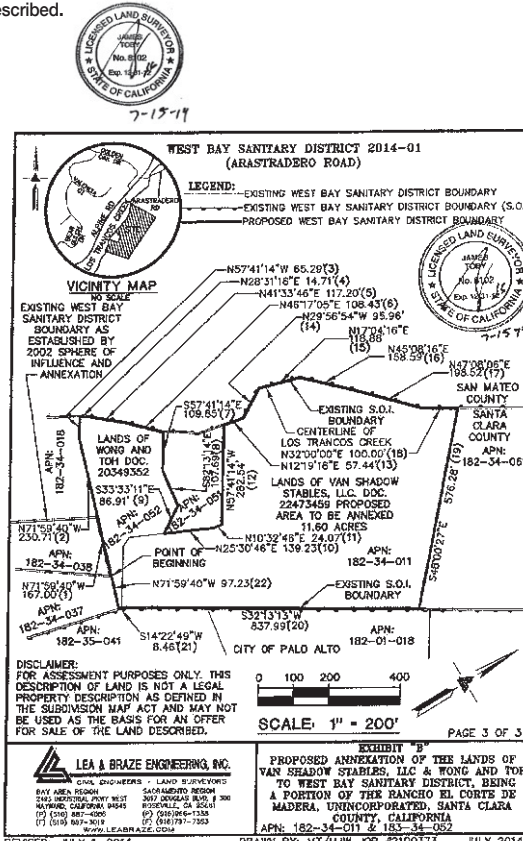
**EXHIBIT "B"**

Thence (20) South 32°13'13" West, 837.99 feet along the existing West Bay Sanitary District S.O.I. Boundary to a point in common with said Lands of Van Shadow Stables, LLC and of said Lands of Wong and Toh;

Thence (21) leaving the boundary of said Lands of Van Shadow Stables, LLC, and continuing along the Lands of Wong and Toh South 14°22'49" West, 8.46 feet;

Thence (22) leaving the West Bay Sanitary District S.O.I. Boundary North 71°59'40" West, 97.23 feet to the Point of Beginning and containing 11.60 acres of land more or less.

For assessment purposes only. This description of land is not a legal property description as defined in the Subdivision Map Act and may not be used as the basis for an offer for sale of the land described.





## 28001 Arastradero Road, Los Altos Hills

### Spacious and Convenient Custom Residence

Grand spaces with thoughtful details define this private property, which includes a custom-built 5 bedroom, 5.5 bathroom home of 6,025 sq. ft. (per county) and a lot of 1.07 acres (per county). Rich elements like plantation shutters, intricate skylights, and oak hardwood floors will impress your guests, while a central vacuum system, multi-zoned heating and cooling, and considerable storage enable convenient everyday living. The open layout includes a two-story great room and a spacious dining room, while the immense island kitchen opens to the family room. Terrific spaces like a home office, an extensive master suite, and two lofts enhance the home, which also provides two staircases, two wet bars, three fireplaces, and an attached three-car garage. The sizable gated grounds offer a fenced tennis court and a heated lap pool with a spa. Within moments of Palo Alto Hills Golf and Country Club, this home is also near excellent schools like Nixon Elementary (API 955), Terman Middle (API 968), and Gunn High (API 917) (buyer to verify eligibility).

For video tour & more photos, please visit:

**[www.28001Arastradero.com](http://www.28001Arastradero.com)**

Offered at \$4,998,000

650.488.7325 | michaelr@deleonrealty.com | www.deleonrealty.com | CalBRE #01903224

Representing  
SELLERS and  
BUYERS of  
EXCEPTIONAL  
PROPERTIES

FOR SALE

WOODSIDE



Magnificent 5-Acre Estate  
Offered at \$18,995,000  
155KingsMountain.com

FOR SALE

WOODSIDE



Beautifully Remodeled with Views  
Offered at \$3,495,000  
785WestCalifornia.com

FOR SALE

WOODSIDE



Ultimate Privacy with Spectacular Views  
Offered at \$3,495,000  
125Sheridan.com

FOR SALE

EMERALD HILLS



Grand Residence in Parkwood Estates  
Offered at \$3,299,900  
8ColtonCourt.com

PENDING

WOODSIDE



Superb Location  
Offered at \$2,695,000  
3316WoodsideRoad.com

SOLD

WOODSIDE



Romantic Country Estate  
Offered at \$7,690,000

SOLD

WOODSIDE



Renovated Estate on 4.5 Acres  
Offered at \$6,495,000

“Erika is a great real estate agent who gets fantastic outcomes for her clients. We have done numerous transactions with her over the years. She knows the market extremely well, is a tireless worker, and a very positive person. She gave great advice and has strong negotiating skills. We highly recommend her.”

– Woodside Client

**Personalized Service**

**Knowledgeable**

**Responsive**

**Strong Negotiator**



Top 1% Nationwide  
Over \$1 Billion Sold

Top US Realtor, *The Wall Street Journal*

650.740.2970  
edemma@cbtnorcal.com  
erikademma.com

**ERIKA DEMMA**

CalBRE# 01230766

