

The Almanac

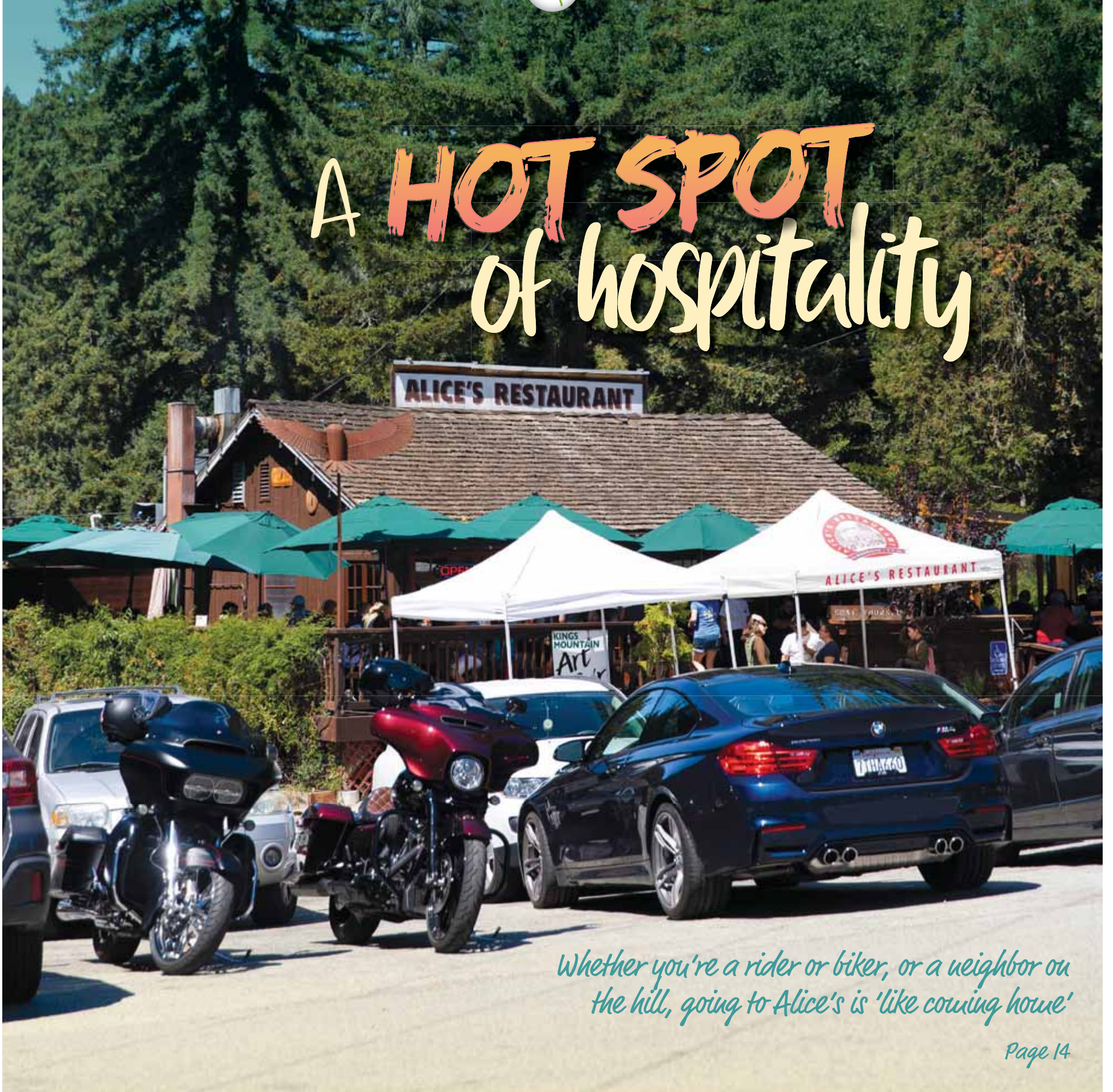
THE HOMETOWN NEWSPAPER FOR MENLO PARK, ATHERTON, PORTOLA VALLEY AND WOODSIDE

SEPTEMBER 11, 2019 | VOL. 55 NO. 2



WWW.ALMANACNEWS.COM

A HOT SPOT of hospitality



Whether you're a rider or biker, or a neighbor on the hill, going to Alice's is 'like coming home'

Page 14

Uneven Ground: Food deserts and swamps | Page 5
Leaf blower constraints in Atherton? | Page 9
Equestrian bridge rejected in Woodside | Page 10



Early eyes on
your home.

Best offer for
your listing.

COMPASS

Discover Compass Coming Soon.
Only at [compass.com](https://www.compass.com)

PROPERTY SHOWCASE BY HUGH CORNISH & ASSOCIATES

FOR SALE



UNIQUE VIEW HOME IN WESTRIDGE

210 Escobar Road
PORTOLA VALLEY

Offered at \$3,195,000
210Escobar.com

FOR SALE



NEW CONSTRUCTION ON CUL-DE-SAC

4 Palm Court
MENLO PARK

Offered at \$5,725,000
4PalmCourt.com

FOR SALE



STEPS AWAY FROM DOWNTOWN

638 Middlefield Road
PALO ALTO

Offered at \$3,195,000
638Middlefield.com

FOR SALE



STUNNING VIEWS, 2.5+ ACRES IN WESTRIDGE

167 Ramoso Road
PORTOLA VALLEY

Offered at \$5,495,000

FOR SALE



~2 ACRES NEAR MENLO CIRCUS CLUB

236 Camino Al Lago
ATHERTON

Offered at \$14,995,000
236CaminoAlLago.com

FOR SALE



UNPARALLELED IN ATHERTON ON 1+ ACRE

87 Patricia Drive
ATHERTON

Offered at \$11,995,000
87Patricia.com

FOR SALE



19-ACRE EXTRAORDINARY RENOVATION

Exceptional Estate
WOODSIDE

Offered at \$9,995,000
ExceptionalWoodsideEstate.com

PENDING



BUILD THE HOME OF YOUR DREAMS

84 Stockbridge Avenue
ATHERTON

Offered at \$6,850,000
84Stockbridge.com

SOLD



TRANQUIL SETTING AND GORGEOUS VIEWS

5 Sandstone
PORTOLA VALLEY

Offered at \$3,195,000
5Sandstone.com

Ranked Top 1% Internationally – Coldwell Banker
Ranked #200 Nationally by *The Wall Street Journal*, 2019
Over \$2 Billion in Sales

**HUGH
CORNISH**
& ASSOCIATES



GLOBAL
LUXURY
RESIDENTIAL BROKERAGE



STEPHANIE ELKINS
VAN LINGE

650.400.2933
stephanie@hughcornish.com
CalRE#00897565

HughCornish.com

HUGH CORNISH

650.619.6461
hugh@hughcornish.com
CalRE#00912143

The property information herein is derived from various sources that may include, but not be limited to, county records and the Multiple Listing Service, and it may include approximations. Although the information is believed to be accurate, it is not warranted and you should not rely upon it without personal verification. Real estate agents affiliated with Coldwell Banker Residential Brokerage are independent contractor agents and are not employees of the Company. ©2019 Coldwell Banker Residential Brokerage. All Rights Reserved. Coldwell Banker Residential Brokerage fully supports the principles of the Fair Housing Act and the Equal Opportunity Act. Owned by a subsidiary of NRT LLC. Coldwell Banker and the Coldwell Banker Logo are registered service marks owned by Coldwell Banker Real Estate LLC. CalRE #01908304.

FREE AND OPEN
TO THE PUBLIC
1-6PM

SATURDAY, SEPT. 21

BANDS ON THE BAYFRONT

Proceeds
benefit
school music
and art
programs

ART & MUSIC FESTIVAL

LIVE MUSIC, ART & VENDOR SHOWCASE,
FARMERS MARKET

FREE KIDS & TECH ZONE, NONPROFIT SHOWCASE, ARTISAN CRAFTS,
FARM TO CUP COCKTAILS, CRAFT BEER & WINE GARDEN, FOOD TRUCKS

MUSIC BY

Community Stage

Anthony Paule
& Wee Willie Walker
Super Diamond

Longhorn Stage

Killer Queens
South Bay Dub Allstars



Music City Stage

The Y Axes
Alvie & The Breakfast Pigs
Life Size Models
First in Flight

Hometown Stage

San Jose State Marching Band
Metro
School of Rock San Mateo
Indygo Rythm Section



@FacebookFestivals
www.FBCommunityEvents.com
FBCommunityEvents@fb.com



1 Hacker Way, Menlo Park

Local News

MENLO PARK | AHERTON | WOODSIDE | PORTOLA VALLEY

Uneven Ground, Part II: Navigating food deserts and swamps

By Kate Bradshaw
Almanac Staff Writer

When Kendy Mendoza of East Palo Alto and his wife experienced health scares over the last few years, they took action to turn their lives around. Eight years ago, when his wife was diagnosed with diabetes, she cut out bread and tortillas from her diet, he said.

Two years ago, after a heart-related health scare, he added, he changed his diet and exercise habits, and now hikes and eats 70% more fruits and vegetables.

“My life is changing,” he said. He explained all of this during an interview with *The Almanac* while he cooked fried chicken in front of St. Francis Church in East Palo Alto to feed the post-service crowd one Sunday because, he acknowledged, it still sells better than vegetables.

As *The Almanac* discussed in part one of this series, a number of local health clinics are increasingly focused on trying to address the “social determinants” of health, seeking to help people to proactively develop healthy habits that reduce their need for acute medical services.

One of those key determinants of health is diet and access to healthy food, an area in which there are significant differences in access based on neighborhood.

The discrepancy isn’t hard to see: In Palo Alto, Redwood City and Menlo Park, there are four Safeways, two Trader Joes, two Whole Foods, two Grocery Outlets and a number of other specialty and local grocery stores. But head across U.S. 101 and the grocery stores become few and

ABOUT THIS STORY

This is part two of a three-part series exploring why the communities of the Belle Haven neighborhood of Menlo Park, North Fair Oaks and East Palo Alto experience greater environmental health burdens than their neighboring jurisdictions; how these burdens impact people’s lives; and what people are doing to help or worsen them today. This section explores how disparate access to healthy food impacts these communities. Part one presented some theories about why these three communities experience greater environmental burdens and examined the area’s history of segregation. It also discussed how the high cost of housing in these areas is disproportionately affecting the health of low-income families.

far between, making it harder for residents to access healthy food and impacting the health of that area’s residents.

According to the U.S. Department of Agriculture, Belle Haven and East Palo Alto — as well as some areas on the Stanford campus — are considered to be “food deserts”: areas where low-income people have limited access to healthy foods. A food desert is defined as an area, in an urban setting, where a significant number or portion of residents are more than a half-mile from the nearest supermarket.

Sandra Green, a Belle Haven resident who has lived in Menlo Park since 1957, supports two grandchildren and has diabetes, said that if there were one thing she could change about the



Photo by Magali Gauthier

Tim Purdy, a volunteer with Samaritan House, grabs some rice and beans from the North Fair Oaks facility’s “food pharmacy,” which provides foods tailored to help diabetic patients control their blood sugar levels.

community to make it healthier, she’d install a grocery store in the neighborhood.

The need for grocery services in Belle Haven is particularly acute as high-rise apartments and office buildings spring up around it, adding more residents and blocking them all in with dismal traffic gridlock. As Menlo Park developed its new zoning on the city’s Bay side to allow for all this growth, residents responding to a range of surveys over and over again identified their top priority for a retail space to be a grocery store — outranking restaurants, a pharmacy, a bank or an ATM.

As part of Facebook’s proposed “Willow Village” project, the city’s largest-ever development proposal, the corporation has said it’s committed to bringing a grocery store to the community. But residents have wondered whether the specific vendor chosen will offer groceries that are both affordably priced and high quality. They also question why they should have to bear the burden for so much new growth and traffic to get a service that they believe should always have been in the area.

According to researchers, it’s not enough just to have nearby access to food; that food has to be nutritious to be a true community asset, otherwise the area is considered a food “swamp.”

A 2012 report by San Mateo County calculated the ratio of

fast food restaurants and convenience stores to produce vendors, supermarkets or farmers’ markets. The report found the ratio to be about seven to one in Redwood City, four to one in Menlo Park, and about one to one in East Palo Alto. Portola Valley is the only town where there are more “healthy” options — produce vendors, farmers’ markets and supermarkets — than “unhealthy” options, or fast food restaurants and convenience stores, with a ratio of 0.7 to one.

But even in areas where there is a supermarket nearby, many households struggle to afford fresh fruits and vegetables. A 2015 report by SPUR, the San Francisco Bay Area Planning and Urban Research Association, found that in the Bay Area, it’s more common for households to be unable to afford fresh fruits and vegetables than to be unable to find them nearby.

Health care challenges

In addition to the fact that these neighborhoods experience greater difficulty in accessing nutritious foods to bolster long-term health, many residents worry about the cost of health care. Yet others in immigrant families must also contend with the potential impacts to their immigration status that accessing both health care and food aid through the government could have with a new Trump

administration policy set to go into effect next month.

When asked if they had ever delayed seeking health care because of the cost, 34 of the 101 people *The Almanac* interviewed said yes.

“If we do get sick, I think a lot before we go to the ER or the doctor,” North Fair Oaks resident Alejandra Juarez said.

A 10-year-old from North Fair Oaks who didn’t want his name to be used said he hasn’t had to delay accessing health services because he has Medi-Cal, but he notices that the adults around him worry.

Among the 101 people who live in Menlo Park, North Fair Oaks, Palo Alto and East Palo Alto that *The Almanac* interviewed about their health concerns in the community, key concerns that emerged, following the predominant concern about the cost of housing, were the cost of health care, access to healthy food, and diabetes.

Twenty-one people rated the cost of health care, 10 rated diabetes, and 11 rated access to healthy food among their top three health concerns.

Diabetes and heart disease, both of which can be the consequence of a poor diet, are the leading causes of death and severe illness in San Mateo County, according to the county health department.

See **UNEVEN GROUND**, page 8



Photo by Magali Gauthier

Green peppers and apples are some of the diabetes-friendly foods offered at the food pharmacy at a clinic run by Samaritan House in North Fair Oaks.

WIN for FUN

What do you do for fun? Visit our award-winning casino!

VOTED #1



BEST LOCAL CASINO!
BEST BUFFET!
BEST ITALIAN RESTAURANT



CHUKCHANSI GOLD
RESORT & CASINO

Hwy 41 North To Coarsogold | chukchansigold.com | 866.794.6946

Nestled minutes from the majestic splendor of Yosemite National Park.

Must be 21 years of age or older and a Chukchansi Rewards Club Member. All guests must have a valid government-issued photo ID acceptable to management for all Chukchansi Rewards Club transactions. Management reserves all rights to cancel or modify all offers, promotions and/or events without prior notice. Restrictions and exclusions may apply, please visit website for further details.

Established 1965

The Almanac

Serving Menlo Park,
Atherton, Portola Valley,
and Woodside for over 50 years

NEWSROOM

Editor

Renee Batti (223-6528)

Assistant Editor

Julia Brown (223-6531)

Staff Writers

Kate Bradshaw (223-6588)

Rick Radin (223-6527)

Angela Swartz (223-6529)

Contributors Kate Daly, Maggie Mah,
Barbara Wood

Special Sections Editor

Linda Taaffe (223-6511)

Chief Visual Journalist

Magali Gauthier (223-6530)

Intern

Matthew Vollrath

DESIGN & PRODUCTION

Design and Production Manager

Kristin Brown (223-6562)

Designers Linda Atilano, Amy Levine,
Paul Llewellyn, Doug Young

ADVERTISING

Vice President Sales and Marketing

Tom Zahiralis (223-6570)

Display Advertising Sales

(223-6570)

Real Estate Manager

Neal Fine (223-6583)

Legal Advertising

Alicia Santillan (223-6578)

ADVERTISING SERVICES

Advertising Services Manager

Kevin Legarda (223-6597)

Sales & Production Coordinators

Diane Martin (223-6584),
Nico Navarrete (223-6582)

The Almanac is published
every Wednesday at

**3525 Alameda De Las Pulgas,
Menlo Park, CA 94025**

■ **Newsroom:** (650) 223-6525
Newsroom Fax: (650) 223-7525

■ **Email news** and photos with captions
to: Editor@AlmanacNews.com

■ **Email letters** to:
letters@AlmanacNews.com

■ **Advertising:** (650) 854-2626
Advertising Fax: (650) 223-7570

■ **Classified Advertising:** (650) 854-0858

■ **Submit Obituaries:**
www.almanacnews.com/obituaries

The Almanac (ISSN 1097-3095 and USPS 459370) is published every Wednesday by Embarcadero Media, 3525 Alameda de las Pulgas, Menlo Park, CA 94025-6558. Periodicals Postage Paid at Menlo Park, CA and at additional mailing offices. Adjudicated a newspaper of general circulation for San Mateo County, The Almanac is delivered free to homes in Menlo Park, Atherton, Portola Valley and Woodside. POSTMASTER: Send address changes to the Almanac, 3525 Alameda de las Pulgas, Menlo Park, CA 94025-6558. Copyright ©2019 by Embarcadero Media, All rights reserved. Reproduction without permission is strictly prohibited.

The Almanac is qualified by decree of the Superior Court of San Mateo County to publish public notices of a governmental and legal nature, as stated in Decree No. 147530, issued October 20, 1969. Subscriptions are \$60 for one year and \$100 for two years. Go to AlmanacNews.com/circulation.

To request free delivery, or stop delivery, of The Almanac in zip code 94025, 94027, 94028 and the Woodside portion of 94062, call 854-2626.



Menlo Park looking into drone program

By Kate Bradshaw

Almanac Staff Writer

Drones may be a part of the Menlo Park City Hall's future.

Menlo Park Police Chief Dave Bertini told The Almanac Sept. 3 that he is asking the City Council to consider holding a study session, likely sometime in November, to discuss the possibility of starting a drone program to support police work, alongside work in other city departments.

The same day, the Mountain View City Council passed a policy that will permit the launch of a program to use unmanned aircraft systems — also known as drones — to aid the work of the police, fire and public works departments.

In Mountain View drones might be used in policing to look for missing people; provide situational awareness by getting an aerial point of view on a situation; respond to suspected explosive devices or dangerous scenes; and to document a crime or collision scene. In the public works department, drones could be used for roof, gutter or tree canopy inspections, road and construction project oversight, and to do environmental assessments, according to the Mountain View policy.

As far as Menlo Park's plans go, Bertini said, "We are in the very, very initial stages of looking at what Mountain View did."

He later added that he hopes drones would be used by other city departments such as public works, transportation, community development, and the community services departments. "Our intention is to have multiple trained and certified pilots from each one of these departments," he later clarified.

The department will have to address concerns about privacy, as well as acquire special authority from the Federal Aviation Administration (FAA) for such a program to move forward, Bertini noted.

In August 2016, the Menlo Park City Council banned the recreational use of drones — along with remote-controlled model airplanes — at city parks. The ban was passed partly because the city is within 5 miles of two airports, in San Carlos and Palo Alto.

Even while recreational drone use has been cut in Menlo Park, use of drones by the Menlo Park Fire Protection District has only expanded in the past several years. In May 2016, it was the first fire agency in the state to receive approval from the FAA to operate drones, and it has had a drone crew since 2014.

The district's drones have been

used to document fire damage in the aftermath of the Tubbs Fire in Santa Rosa in 2017 and the Carr Fire near Redding in 2018.

Drone programs across California are proliferating. Fremont has been using drones for its police and fire departments since 2017. In February, the Fremont Police Department reported using a drone equipped with thermal imaging technology to find a student reported missing from the California School for the Deaf. The drone helped find the student, who was hiding in the dark in the bushes, and who would otherwise have been much harder to find, the department reported.

Bertini noted that a city in Southern California is working on a pilot program — "no pun intended," he joked — to use drones as first responders.

The police department in the city of Chula Vista in San Diego County began deploying drones as first responders within a 1-mile radius of the police department in October 2018 after studying the possibility with a committee exploring best practices and policies since December 2015.

The department calls the use of drones "transformational" as it allows responders to see what is happening at an incident before emergency personnel arrive, sometimes minutes later.

"Imagine the value of knowing that the truck leaving the scene of a robbery report is red and heading northbound, or that the report of a man with a gun is actually a 16-year-old with a BB gun, or the accident on the freeway involves a tanker truck with placards indicating a chemical hazard," the department states on its website. The department has made drone flight data publicly accessible.

These procedures raise the obvious privacy concerns around what gets recorded and who gets access to it.

The Mountain View policy states that "operators will take reasonable precautions to avoid inadvertently recording or transmitting images that infringe upon an individual's right-to-privacy," and should avoid flying over private property to the extent possible.

Being in the middle of Silicon Valley, Bertini said, "It's almost expected that we would be trying to parlay this technology to do our job better, safer and more effectively."

The next step for the idea to move forward will be to schedule a study session on the topic, after which a proposal and funding request might be developed, depending on the City Council's direction. ■

Has your agent or broker *retired*?
We're still going strong!



Charlie started February 3, 1989

Has your carrier cancelled you recently?
Give us a call. We can help.
(650) 327-1313

Charlie Porter Farmers® Agency
License # 0773991
671-A Oak Grove Ave, Menlo Park
cporter2@farmersagent.com



DA's Office investigating former community college chancellor

By Angela Swartz
Almanac Staff Writer

The San Mateo County District Attorney's Office has issued search warrants in connection with Ron Galatolo's tenure as San Mateo County Community College District chancellor. Galatolo recently left the chancellor's post.

District Attorney Steve Wagstaffe would not specify when the search warrants were issued and at what locations because the investigation is ongoing.

"There are allegations of improprieties with the construction and purchasing contracts and allegations of harassment of an employee," Wagstaffe said in an Aug. 29 email. "The warrants and affidavits have been sealed by court order."

The DA's Office has been investigating for a couple of months and "has a long way to go," he said.

On Aug. 12, the district announced that Galatolo would leave his post to become chancellor emeritus and work on a feasibility study to bring a California State University campus to the Peninsula. He is earning the same annual salary that he earned as chancellor: \$467,700.

The contract for Galatolo's new position expires in March 2022, and is nonrenewable.

"The opportunity to have a CSU option at Canada College is a once in a life time

opportunity for our county," college district board President Maurice Goodman said in a written statement. "We came to the mutual understanding that in order to give this dream the best opportunity for success, it was going to take the owner of the vision to focus solely on making this monumental goal into a reality. In my mind, there is no doubt that Ron Galatolo is the only person who can lead this effort."

The Palo Alto Daily Post recently obtained the separation agreement between Galatolo and the district through the California Public Records Act; the agreement said the two parties would craft a "mutually acceptable joint press release." It also states that district officials would stick to "talking points" when discussing Galatolo's departure.

The agreement prevents the district from suing Galatolo for anything he might have done as chancellor.

The Almanac requested a copy of the document on Sept. 6; the college district has not yet provided it.

Galatolo's profile on the Redwood City Chamber of Commerce website states that he resides in Menlo Park. Chamber officials could not be reached for comment on when the profile was last updated or to confirm his residence, and Wagstaffe said he is unsure where Galatolo lives.

District officials said in a prepared statement that it is important to avoid speculation or jumping to conclusions, and to allow the DA's Office to conclude the investigation.

"While the College District is unable to comment on a pending investigation, I can say that we are fully cooperating with the District Attorney's office," Goodman said. "The Board of Trustees is committed to full transparency and accountability in the management of the College District. Maintaining the trust of our community, staff, students and many supporters throughout the County and State is one of our highest priorities and we will take any steps necessary to maintain that trust."

Galatolo could not be reached for comment.

Mike Claire, College of San Mateo's president, is serving as acting chancellor.

Galatolo first joined the district as executive vice chancellor in 1999, following 11 years as controller for the Foothill-De Anza Community College District, according to his Redwood City chamber profile.

A request to the SMCCCD office for information on when Galatolo was promoted to chancellor went unanswered.

The college district board is scheduled to interview representatives of search firms that could be hired to find a new chancellor at its Sept. 11 meeting. ▀

REAL ESTATE REVIEW WITH MANDY MONTOYA September 2019



After the typical slowdown in July and August, September is sometimes the month with the highest number of new listings. The first week this September saw 18 new listings hit the MLS in Atherton, Menlo Park, Portola Valley and Woodside compared to 6 new listings during first week in August. Below is a chart showing seasonal trends for new listings coming to market. Real Estate is hyper-local. Contact me for strategic guidance.



650.823.8212
mandy@mandymontoya.com
DRE 01911643



CAREGIVER CONFERENCE

"CAREGIVING RE-IMAGINED"

Saturday, September 28
8:00am-3:30pm
MOUNTAIN VIEW SENIOR CENTER,
266 Escuela Avenue, Mountain View
Parking is free.

Conference attendees will enjoy your choice of 9 info-packed workshops plus:

- Morning coffee & orange juice
- Inspiring Keynote speech
- Delicious lunch provided by BridgePoint at Los Altos
- Afternoon dessert and beverages
- Access to sponsors who are expert service providers
- Special group sessions
- Door prizes



EARLY BIRD REGISTRATION SPECIAL: \$40

Rose Kleiner Families, Avenidas and Village Members: \$35

After September 20: \$45 or \$50 at the door

Call (650) 289-5445 for more information or sign up at www.avenidas.org



Creating an environmentally sound community

SHRED AND E-WASTE RECYCLING EVENT

For Menlo Park residents and businesses: This FREE on-site shredding and recycling of confidential files and unwanted electronics is limited to 3 standard boxes (10"x12"x15") per vehicle. Proof of residency (utility bill, driver's license, etc.) or business license required.

- FOR MORE INFORMATION**
- Visit menlopark.org/shredevent
 - Call 650-330-6760

Saturday, September 21, 2019
9:00 a.m.–Noon*
City Corporation Yard
333 Burgess Drive

*Event lasts until Noon or until the truck is full.

UNEVEN GROUND

continued from page 5

About 12% of the adults in San Mateo County have diabetes, and of those, about 25% are Latino. About 15% are Asian and 8% are Hawaiian or Pacific Islander. Black residents are more likely to be hospitalized due to short- and long-term complications from diabetes, according to county data.

Dietary supplements

A free clinic run by Samaritan House in North Fair Oaks, which mainly serves people without insurance, has taken an innovative approach to helping some of the most vulnerable patients in the community manage their diabetes through diet.

Through a partnership with Second Harvest Food Bank, the predominant food bank in San Mateo and Santa Clara counties, the clinic runs a “food pharmacy” aimed at helping people diagnosed with diabetes manage their blood sugar.

Recently, the clinic’s medical director of health care services, Jason Wong, showed *The Almanac* a small storeroom at the North Fair Oaks clinic full of foods like beans, fresh produce, milk, eggs, cheese, turkey, fish and tofu.

Clinic patients with diabetes are given a quarter-sheet “prescription” form from their doctor encouraging them to stock up on whatever food they want from the storeroom, Wong said.

About 20% of the patients seen at the clinic, or about 200, are seen for diabetes, he said. While the paper prescriptions are largely symbolic, he added, the clinic’s emphasis on healthy food and the results they’ve achieved in helping people manage their diabetes are anything but.

The food pharmacy has been running for about three years now, and in that time, Wong said, the clinic has found that patients who access the service have had as much success managing their diabetes as they would with an oral medication, as determined by the A1C test, a measure of how much glucose or sugar is in one’s bloodstream.

Type 2 diabetes is diagnosed when one has an A1C level of 6.5 or greater; on average, Wong reported, the program lowered diabetes patients’ A1C levels by 1%, from 9% to 8%. A normal A1C reading is considered to be 5.7% or lower.

About 200 patients are enrolled in the food prescription program, and the clinic sees about 70 of those patients a month, he added.

The shift is helping patients feel better, have more energy and save money, he said.



Photo by Magali Gauthier

Dr. Jason Wong, medical director at Samaritan House’s North Fair Oaks clinic, says the food pharmacy has been as helpful for patients seeking to control their diabetes as an oral medication.

Demo-ing deliciousness

Still, Wong noted, there are yet more steps to supporting people who are trying to eat more healthfully than just sending them home with some kale or tofu — for example, teaching people how to prepare those foods, and making sure they can access enough of it to satisfy their hunger.

‘It’s not good policy for our community for people to not have access to basic food supports.’

TRACY WEATHERBY
VICE PRESIDENT OF STRATEGY
AND ADVOCACY AT
SECOND HARVEST FOOD BANK

Second Harvest has been a leader in eliminating these final barriers, said the organization’s director of nutrition, Maya Murthy.

The nonprofit offers cooking classes and has a team of people who, at food distribution events, give cooking demonstrations using simple recipes, as well as teach people how to read a food label and understand what the right portion size for a given food should be.

Murthy understands that for low-income people working long hours or waking up at the earliest hours of the morning for long commutes, there’s hardly time to indulge in preparing elaborate “foodie” meals with the freshest produce money can buy — let alone hire private chefs to prepare those meals for them.

In the last couple of years, she said, the program has been focused on helping people to make the best choices for their health, recognizing that this may not look the same for everyone.

Her goal, and that of her team of volunteer “health ambassadors,” is to help people feel good

about picking up a new piece of produce they’ve never had before and leave feeling confident they can go home and prepare it into something delicious.

It’s an empowering thing, she explained, to feel good around food, and to treat cooking as a nourishing act of self-care. It’s a ritual that can be particularly valuable in communities that have experienced trauma, she added.

She tests the recipes herself to make sure they’re not too complicated.

“Everybody has some complicated relationship with food, for whatever reason that is. I think one of our roles as being on the nutrition team here is the start of the process of healing that,” she said.

Second Harvest works closely with local clinics to ensure that vulnerable families not only access the free food the food bank offers, but that they enroll in food assistance programs for which they might be eligible.

According to Tracy Weatherby, vice president of strategy and advocacy at Second Harvest, CalFresh, California’s federal food aid program, can provide monthly benefits as low as \$15 worth of food, but the average CalFresh recipient the nonprofit helped sign up last year received more than \$350 worth of food per month. Households that attend distributions at Second Harvest receive an average of \$245 a month in food, she said.

Changing rules

The impacts these programs have in bolstering the acute- and long-term health of community members are under threat, however.

Under a new policy set by the Trump administration set to take effect on Oct. 15, immigrant families in some circumstances who access services like CalFresh, as well as Medicaid and housing assistance, will be considered a “public charge” and

may denied green cards.

The U.S. Citizenship and Immigration Services uses the “public charge” test to decide who to let into the U.S. and who should get a green card, as well as whether to adjust or extend someone’s immigration status.

This test is not used when people apply for citizenship, according to the Health Consumer Alliance. The rule does not apply to children under 21 who use Medi-Cal or to pregnant women, according to the Legal Aid Society of San Mateo County. It also would not apply to people who already hold green cards or to people who have any kind of humanitarian visa.

“There’s a very large number of people for whom it would have no effect at all. That being said, the intent of the rule is to scare people off of all public programs It’s going to make our communities hungrier and less healthy,” Weatherby said.

According to a letter of opposition to the rule change signed by county Supervisor Dave Pine last year, while it’s not known exactly how many people will be impacted by the rule change, an analysis by the Migration Policy Institute found that under the new policy, 41% of San Mateo County residents who are not U.S. citizens, or about 32,600 people, are members of families that use at least one of the four means-tested benefits that might be considered in a public-charge determination, compared with 2% under the current policy. About 72% of these residents work.

The rule is expected to face major legal challenges and would not apply retroactively, Weatherby noted.

However, she added, since the rule was proposed, it has already created fear, apprehension and government distrust in the communities Second Harvest serves.

“Taking away nutrition from people who are trying to get themselves settled, who are

working hard, is a very counterproductive policy for our communities,” she said. “CalFresh is a basic safety net program. If people need a few months or a year to get set up to be successful, that should not be held against them in any way, shape or form.”

These concerns could impact children’s access to nutritious food: About 76% of households receiving CalFresh in East Palo Alto are households with children; the same applies to about 86% of North Fair Oaks families.

Weatherby said that Second Harvest staff members have reported that it’s been more difficult to get people to sign up for CalFresh since the threat of the rule change went public last year. In some school districts, she said, it’s been reported that families are not signing their children up for free or reduced-price lunch programs at school, even though those are not connected to the public-charge rule.

The Legal Aid Society of San Mateo County signed on to a lawsuit, filed Aug. 14, seeking to block the implementation of the policy, arguing that it is unlawful and unconstitutional and would disproportionately threaten immigrant families, particularly those of color.

“The Trump administration has deliberately designed this policy to target families of color, which is part of its overall blueprint to change the face of what we look like as a nation and who is considered worthy of being an American. It threatens immigrants of color with exclusion and Americans of color with deprivation or family separation. And it aims to deny working-class immigrants of color the ability to thrive in the land of opportunity,” said Marielena Hincapie, executive director of the National Immigration Law Center, another group that supported

See **UNEVEN GROUND**, page 17



Photo by Selijah Meacham

The Ecumenical Hunger Program is another nonprofit that provides nutritious food support to families and individuals, including to those who do not have means of cooking or refrigerating their food.

Atherton to begin exploring gas-powered leaf blower restrictions

By **Angela Swartz**
Almanac Staff Writer

After debate about whether Atherton town staff has the time to explore limiting leaf blower use in town, council members asked staff to estimate the amount of time it would take to look into the topic following a Sept. 3 City Council study session.

Council members questioned whether the town should allocate time from staff members' already limited schedules to examine limiting the use of gasoline-powered leaf blowers. Councilman Cary Wiest said he wasn't interested in devoting time to the discussion and noted that he wouldn't assume that leaf blowers are the main cause of dust and pollution in town.

"To understand what we're trying to accomplish, I have to understand what the issues are and I don't understand what the issues are," Wiest said.

Councilman Mike Lempres replied that the issues are "noise and pollution," which Wiest responded are "both arguable."

Vice Mayor Rick DeGolia

and council members Lempres and Elizabeth Lewis said staff should examine restrictions on gas-powered leaf blowers in nearby towns to get a sense of how Atherton could implement its own policy. In January, the Portola Valley Town Council amended an existing noise ordinance to ban the use of gasoline-powered blowers. The council agreed to a two-year delay before the regulations go into effect to allow gardeners and homeowners to replace their equipment. Los Altos banned gas-powered leaf blowers in 1991, Palo Alto in 2000, and Los Gatos in 2014.

"I think other thoughtful communities are taking action in a thoughtful way and I think that Atherton would like to do that too," Lewis said, adding that she wouldn't want the town to ban gas-powered blowers without giving people time to switch to electric ones. "We should be trying to protect our residents rather than sweep it under the carpet. I don't think we can do business as usual in this day and age."

Lempres said he's received complaints about gas-powered blowers and finds them "really

loud and irritating."

Leaf blower use "bothers people," he said. "It does create noise. It does create pollution. ... It's worth expending some staff time to look at the issue."

The town now restricts hours that leaf blowers can be used, but not the type of blower, according to staff. (Leaf blowers may be used between 8 a.m. and 6 p.m. Monday through Friday, 10 a.m. and 5 p.m. on Saturday, and 10 a.m. and 3 p.m. on Sunday.)

The discussion followed a recommendation from the town's Environmental Programs Committee in May that the council support phased restrictions on gas-powered leaf blowers.

Most gas-powered blowers have two-stroke engines, which mix fuel with oil to operate the device, according to the staff report. Over 30% of the fuel that the engine uses fails to completely combust, releasing several air pollutants, including carbon monoxide, nitrous oxide and hydrocarbons, according to the report. Studies have indicated that a gas-powered two-stroke blower can generate 23 times the

carbon monoxide and almost 300 times the non-methane hydrocarbons compared with a 2011 Ford Raptor truck over a 30-minute period of usage. Lewis said at the meeting that this statistic is concerning.

Staff analyzed the feasibility of town maintenance employees and workers on private properties switching to electric-powered blowers. The analysis concluded that it may be difficult for town workers — who use gas-powered blowers in Holbrook-Palmer Park, El Camino Real medians, the stream channel, sidewalks and streets — to switch to corded or battery-powered leaf blowers. These areas do not typically have electrical outlets readily available, meaning the blower would need to hold a longer charge or workers would need to have portable gas generators available, according to the public works department.

The department notes that a ban on gas-powered blowers would require additional personnel or reduced level of maintenance in town. It could also be difficult for private property owners to switch to electric leaf blowers since

properties in town are significantly larger on average than those in surrounding jurisdictions, and prohibiting gas-powered blowers would require some landscape contractors to purchase new equipment, staff noted.

Greg Conlon, an Atherton Rail Committee member who attended the meeting, wondered how a potential switch to electric blowers could affect his gardening bill.

DeGolia noted that with the growth of electric-powered tools that also use batteries, electric leaf blowers are likely becoming more powerful.

"It's part of our responsibility to improve the environment as much as we can," he said. "Let's find out the cost to get staff to spend time on it. I don't think it's the highest priority for us. Others (neighboring government bodies) are doing it and it's a good thing to look at."

One Atherton resident said the noise from leaf blowers is worse than airplane noise, and that he is concerned about how they impact landscape workers, who often don't wear masks.

See **LEAF BLOWERS**, page 11



Investing in a free public commuter shuttle network that provides over 3 million rides per year. So everyone has a better commute.

Stanford has called Santa Clara County home for 128 years. That's why we're investing in critical local transportation projects to provide more alternatives to traditional commutes. In fact, since 2003, the university has reduced the percentage of single-occupancy vehicle commuters to and from campus from 69% to 43% today. We're finding sustainable solutions to help the community get to where they need to go.

LEARN MORE AT GUP.STANFORD.EDU

Commission denies permit for equestrian bridge

By Rick Radin
Almanac Staff Writer

The Woodside Planning Commission gave a nudge to town traditions Sept. 4 by declining to approve a conditional use permit for a plan to spend \$200,000 in town and donated money to replace a washed-out equestrian bridge.

The commission's vote was 3-3, according to Planning Director Jackie Young. Commissioners Sani Elfishawy, Aydan Kutay and William Fender voted against approving the use permit, while Marilyn Voelke, Kurt Calia and Craig London voted in favor of it. Jim Bildner was absent.

The reason behind the three no votes on the plan: The bridge, over Bear Creek Gulch, benefited only horseback riders and not the community as a whole, Young said.

The vote passes the decision on the conditional use permit to the Woodside Town Council, which approved the town's portion of the bridge funding at its May 27 meeting. The council is tentatively scheduled to take up the matter at its Oct. 8 meeting, according to Town Manager Kevin Bryant.

Seven horse riders' associations and several residents pledged a total of \$115,000 toward the project to bolster

\$50,000 from the town's trails fiduciary fund and \$35,000 from the general fund.

Justification for replacing the bridge on the town's Center Trail is embodied in Woodside's general plan, which includes 10 guiding principles behind town governance, Young said.

The first principle states that the community "is dedicated to preserving, enhancing and restoring the Town's character as a rural, scenic and historic community."

The second states that Woodside "recognizes and supports the equestrian heritage, lifestyle and facilities as a unique and defining attribute."

Young noted, however, that "there are certain findings that you have to make to approve a use permit, including that the proposed use is necessary ... for the general wellbeing of the community."

"The dissenting opinion was that the use of the trail for equestrians only is discriminatory, (but) we have a park with a soccer field, even though (most of our residents) don't play soccer," she said.

Use of the Center Trail, a vital link in the complex of horse trails in Woodside, has declined significantly since the washout in 2017, according to the staff report on the project. ▣

The Almanac
AlmanacNews.com

LET'S DISCUSS:
Read the latest local news headlines and talk about the issues on Town Square at AlmanacNews.com

More top-rate pediatricians
than you can shake a rattle at.



Stanford pediatricians, now in your neighborhood
at Peninsula Pediatric Medical Group

Stanford
Children's Health

Access to Excellence.

Stanford MEDICINE

genpeds.stanfordchildrens.org



How can a
contact lens improve
your hearing?

Introducing Earlens, the revolutionary hearing system that works like a contact lens for your ear. Unlike conventional hearing aids, the Earlens solution uses a small lens to directly vibrate the eardrum – delivering the broadest frequency range available for clear, natural sound.

JOIN US FOR ONE OF OUR UPCOMING SEMINARS:
SMART HEARING FROM SILICON VALLEY

THURSDAY, SEPTEMBER 19TH AT 11AM
THURSDAY, OCTOBER 10TH AT 11AM

Learn what this revolutionary
device could do for you.
Call (650) 417-9856 to reserve
your spot. Spaces are limited!

4055 Campbell Ave.
Menlo Park, CA 94025
www.perkinsclinic.com

PERKINS CLINIC
AT
EARLENS

FOLLOW US ON
Instagram

The Almanac

@ALMANACNEWS

Need extra help?

We keep things simple:

- Transportation, organizing, shopping, meal prep, errands, and more!
- No costly memberships or contracts you only pay for services rendered

Lifestyle assistance is just a
phone call away.

Care
Indeed™
YOUR 24/7 HOME CARE SPECIALIST
890 Santa Cruz Ave., Menlo Park
www.CareIndeed.com | HCO #414700023

Call today for your
free trial offer
(650) 328-1001

Bard Battelle, longtime PV resident, SRI electronic systems expert, dies

R. Bard Battelle, who raised his family in Portola Valley and worked at Stanford Research Institute (SRI) for 30 years, died on June 10 at the age of 93.

Battelle and his wife of 66 years, RoseAnn, built a home in Portola Valley's Alpine Hills in 1957, according to his family. They moved in the early 1990s to The Forum Rancho San Antonio in Cupertino, where Bard Battelle was editor of the monthly newsletter and enjoyed participating in music programs, his family said.

Born in Dayton, Ohio, he attended local schools there before joining the Army in 1943, his family said. He was assigned to the First Radio Squadron, and his first assignment was to install new VHS radios in P-47 aircraft in the New Guinea

theater of the war.

His next assignment, his family said, was aboard an instrumented B-17 aircraft as a backup radio operator during flights to Fairbanks, Alaska, and the Aleutian Islands to measure the buildup of electron charges on aircraft when flying in snowfall. His final assignment was in a team of four enlisted men and one officer to monitor the installation of new radio and navigation equipment in C-54 aircraft at East Coast airfields.

After his service, he completed his education at Ohio Wesleyan and MIT.

Battelle worked for the Air Force at Wright Field Antenna Lab in Dayton before joining the staff at SRI, where he became an expert on Soviet Russian Electronic Systems, his family said.



Bard Battelle

In addition to his wife, RoseAnn, he is survived by three daughters, Elizabeth (Alan Nicolson), Sarah (Patti Barnes), and Martha (Benjamin Baab); and three grandchildren.

There will be no public services, his daughter Sarah said.

Glenna Ann Brannon Luckenbach

August 14, 1928 – January 18, 2019

Glenna Ann Brannon Luckenbach, age 90, a sixty-five year resident of Menlo Park, passed away peacefully at home on January 18, 2019. She was born on August 14, 1928 in San Diego, CA. She attended Hoover High School and San Diego State College, where she joined Kappa Delta sorority.

Glenna married the love of her life, Ralph Luckenbach, in January 1949, and moved from San Diego to Berkeley, where Ralph was a student at UC Berkeley. Glenna and Ralph moved to Menlo Park in 1953 when Ralph accepted a position with a high-tech company.

After raising her three sons, Glenna went back to college, became a LVN, and joined Kaiser Permanente where she worked for over fifteen years.

Family was the most important part of her life. She loved spending time with her sons and their families.

She was preceded in death by her husband, Ralph Luckenbach; and survived by her three sons, Steven, and his wife, Lori, and two grandchildren, James and Lisa; Mark, his wife Carole, and two grandchildren, John and Catherine; and David, and his fiancée, Marcie.



PAID OBITUARY

LEAF BLOWERS

continued from page 9

He said he holds his breath when he bikes by people using leaf blowers.

"We want to be green and go electric, then here we are using (gas-powered) leaf blowers," he said.

Mayor Bill Widmer recused himself from the discussion. He is an adjunct professor at Menlo College, and a change to the leaf blower policy could financially impact the school if it were forced to change its landscaping practices, creating a potential conflict of interest for him, City Attorney Bill Connors explained at the meeting.

Following the discussion, City Manager George Rodericks said staff will outline how much time and money it would take to research a possible limitation on gas leaf blowers. Staff will work with the Environmental Programs Committee to do public outreach on the topic, he said. The issue is expected to come back to the council in November.

At the same meeting, the council voted 5-0 in favor of a staff-created timeline to replace Connors, who announced his resignation in early August, effective Dec. 31, according to a town staff report. Connors, who was appointed in 2011, told The Almanac he is retiring.

Proposals for city attorney services will be due Oct. 7, and interviews will be conducted the week of Oct. 14. The council will aim to appoint the attorney on Nov. 6, with a tentative start date of Dec. 2. ▀

Care.Cure.Prevent.

Announcing the fall Brain Health Speaker Series, brought to you by Kensington Place at Redwood City

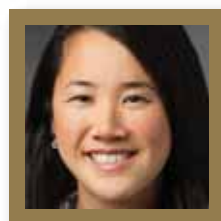
— featuring a special performance by Voices of Kensington, our resident singing group —

Kensington Place is a memory care residence that exclusively serves individuals with memory loss and their families. Our team has built strong relationships with progressive industry leaders who are making a difference in the lives of people living with dementia and who are searching for a cure. Please join us as they share their knowledge and messages of hope.

RSVP to info@kensingtonplaceredwoodcity.com or call (650) 363-9200.



Thurs, Sep 19, 2019 • 5:30-6:30pm
Under the tent at Kensington Place
Dr. Rita Ghatak presents on CARE for persons living with dementia



Thurs, Oct 17, 2019 • 5:30-6:30pm
at Rosener House in Menlo Park
Dr. Sharon Sha presents on research towards a CURE for Alzheimer's and other dementias



Thurs, Nov 14, 2019 • 5:30-6:30pm
Bloomingdales at Stanford Shopping Center
Dr. Frank Longo presents on how to PREVENT dementia



KENSINGTON PLACE

A Memory Care Community

REDWOOD CITY

— North Atherton —

(650) 363-9200 | 2800 El Camino Real | Redwood City, CA 94061 | www.KensingtonPlaceRedwoodCity.com

Devoted Exclusively to Residents with Memory Loss



RCFE License 415600964

Partnering with and supporting:



Stanford MEDICINE Neurology & Neurological Sciences

Partnering sponsor:



Total Care Services



DeLeon Realty

BUILT IN SILICON VALLEY FOR SILICON VALLEY

TURN-KEY DUPLEX IN PRIME PALO ALTO

717 & 723 Ellsworth Place, Palo Alto

Offered at \$2,488,000

www.717and723Ellsworth.com

OPEN HOUSE
Saturday
1:30pm-4:30pm



UPGRADED CHARM IN OLD PALO ALTO

138 Coleridge Avenue, Palo Alto

Offered at \$2,488,000

www.138Coleridge.com

OPEN HOUSE
Saturday
1:30pm-4:30pm



FANTASTIC OPPORTUNITY IN MENLO PARK

770 15th Avenue, Menlo Park

Offered at \$1,950,000

www.770FifteenthAve.com

OPEN HOUSE
Sunday
1:30pm-4:30pm



CHARMING AND VERSATILE LIVING IN PORTOLA VALLEY

660 La Mesa Drive, Portola Valley

Offered at \$2,488,000

www.660LaMesa.com

OPEN HOUSE
Saturday & Sunday
1:30pm-4:30pm



Michael Repka, Managing Broker, DRE #01854880

650.900.7000 | michael@deleonrealty.com | www.deleonrealty.com | DRE #01903224



DeLeon Realty

BUILT IN SILICON VALLEY FOR SILICON VALLEY



MASTERFULLY REMODELED AND CLOSE TO IT ALL

1124 Werth Avenue, Menlo Park

Offered at \$3,488,000

Masterfully remodeled with designer flair in 2017, this spacious home of 2,203 sq. ft. (per county) rests on a lot of 10,103 sq. ft. (per city parcel map) and offers 3 bedrooms and 3.5 baths on a peaceful street in the Central Menlo neighborhood. Ideally structured for a modern lifestyle, the home's open-concept floor-plan features fireplaces warming the comfortable living and family rooms, plus an inviting dining area catered by a kitchen perfectly suited for the ambitious chef. An expansive master suite includes a separate office for all work-from-home needs, while a second bedroom suite provides space for overnight guests. Light, airy interiors are brightened by glass doors leading to the private backyard, with ample space for outdoor enjoyment and towering redwoods offering a shady respite. Adding the finishing touch, this home is close to downtown Menlo Park and Palo Alto, is a short walk to Jack W. Lyle Park, and offers access to acclaimed schools Oak Knoll Elementary, Hillview Middle, and Menlo-Atherton High (buyer to confirm enrollment).

OPEN HOUSE

Saturday & Sunday
1:00 - 5:00 pm

Complimentary
Refreshments

Listed by Michael Repka of the DeLeon Team, the #1 Team in Menlo Park.*

*Search Criteria as compiled by BrokerMetrics® using MLS Data: January 1, 2018 - December 31, 2018, Menlo Park, All Residential Properties.

For more information, video tour & more photos, please visit: www.1124Werth.com

Michael Repka | Managing Broker | DRE #01854880
650.900.7000 | michael@deleonrealty.com | www.deleonrealty.com | DeLeon Realty, Inc. | DRE #01903224

中文諮詢請聯繫 Audrey Sun 電話: 650.785.5822 | DRE # 01933274



A hot spot of hospitality

Whether you're a rider or biker, or a neighbor on the hill, going to Alice's is 'like coming home'

Photos and story by Magali Gauthier

On a recent Sunday morning, hundreds of local and international visitors flocked to the same destination: Alice's Restaurant at the intersection of Skyline Boulevard and Highway 84. They came on foot and on horseback through Wunderlich Park, and riding vintage motorcycles and in luxury cars down the winding roads of the Sky Londa hills. The scene wasn't unique to this particular Sunday. For decades now, it has happened all weekend, every weekend.

"It's a sort of cultural local capital of the moto scene," said Rob Malkin, a Bay Area native in his 60s who has been riding his motorcycle to Alice's Restaurant for decades.

The parking lot at the intersection turns into a pop-up motorcycle and car show. Local collectors bring their priceless "hardware," Malkin says, for tourists and aficionados to admire and chat about. On this particular Sunday, while the crowds waited to be seated at Alice's, they were treated to a handful of Ferraris, a 1966 Lotus Seven and an Aermacchi Harley-Davidson 350 Sprint from the early 1970s.

"It's a carnival atmosphere of collectors, gearheads and motorcycle riders," said local Tom Chavez, 51, who remembers going up to Alice's as a child. "It's a place to be seen. If I got a brand new exotic [car] that I spent a quarter of a million dollars on, I promise you I'm going to Alice's that Saturday morning to show it off."

Chavez says that he has met people from around the world at the restaurant. They come to experience what he says "one would otherwise only see in an auto museum."

But by the time Sunday evening rolls around, the crowds of visitors, riders and drivers have gone their separate ways.

"Alice's has two personalities," said Malkin. "On the weekends



Above: Rob Malkin prepares to leave Alice's Restaurant on Aug. 25. Motorcyclists often frequent the eatery, which has been a local mainstay for decades. **Top:** Sandra Bachman, Sharon Hunt, Meredith Buening, Grace Welcome, Vicki Atkins, Janet Jurian and Erin Bentham cheer after waiter Pjotr Rotteveel blocks some bright sunlight that had been bothering them. The "Ladies Night" crew comes by every Tuesday night to eat dinner together.

it's a hot spot, and during the week it's a place for beauty and contemplation."

During the calmer weekdays, the locals come by to enjoy the food or to just spend time with friends. There's no wait. Customers take a seat right away and the staff greet them on a first-name basis.

Debbie Williams, who grew up locally and has been coming to Alice's since the 1970s, says the food is delicious and the "down-home hospitality" is unparalleled.

"While we're tying up the horses, they're calling out to us 'your lunch is ready,'" Williams said. "That's what they do for us. It's just like coming home."

Brothers Andy and Jamie Kerr, Alice's co-owners who grew up in the area, purchased the property in 2002 and have

worked hard to make the place as welcoming as possible to the

'Alice's has two personalities. On the weekends it's a hot spot, and during the week it's a place for beauty and contemplation.'

BAY AREA NATIVE ROB MALKIN

local community and families. Most notably, they changed the menu to reflect more healthful ingredients and meal options, and put in a lawn in the back for children to play.

Jamie says that because some of the tables are communal,

people from all walks of life end up eating a meal together, chatting and becoming friends.

"You can have a venture capitalist sitting next to a Nobel laureate sitting next to a logger sitting next to a hippie all at one time," said Andy.

On a recent Wednesday, Williams joined two old riding friends, Kathy Di Zio and Joe Squillacioti, at a communal table where hikers Squillacioti had just ran into in Wunderlich Park were also seated. It's not the first time Squillacioti, who also goes by the name Cactus Joe, has befriended hikers on their way to the restaurant. He says Alice's is the kind of place "where you can meet people." Squillacioti has been a regular customer for the past 18 years.

See **ALICE'S**, page 16



Clockwise from top: Jamie Kerr, co-owner of Alice's Restaurant, prepares a sandwich in the kitchen. Alice's breakfast shot is a combination of Jameson Irish whiskey and butterscotch schnapps, topped with a piece of bacon. John Randolph, left, and David Dubbel chat about Randolph's motorcycle in the restaurant parking lot. Debbie Williams feeds her horse, Tango, a carrot before heading home on horseback. Restaurant co-owner Andy Kerr hands Joe Squillacioti peppermints and carrots for Squillacioti's horse before he heads out.

ALICE'S

continued from page 15

Another devoted group of locals has been coming every Tuesday for dinner and drinks for the past 12 years. The staff reserves a booth and table in the bar every

week for the “Ladies Night” celebrants — a group now 12 women strong. Grace Welcome, who was one of the first five women of the crew, says that the Kerrs have made Alice’s a neighborhood spot.

“They catered to all of us who

live up here,” said Welcome. “We felt that and we feel like it’s our spot. It’s the ‘Cheers’ of the hill. Everybody goes there.”

She says that during power outages, the whole community finds itself back at Alice’s. The place has a generator and stays open to offer

food and fuel to folks who need it in the neighborhood.

Andy and Jamie Kerr also host an Easter egg hunt every year, organize fundraisers for the nonprofit Second Harvest, and host a Christmas tree sale on their lot for Woodside Elementary School. All net proceeds go to the school.

Ari Delay, 46, a battalion chief

with the Coastside Fire Protection District, has been coming to Alice’s his entire life. “The restaurant and the community support each other,” he said. “It’s really great because whether they need help from us or us from them, it’s there. It’s a unique thing you don’t see anymore in this day and age. It’s a tight-knit community.”

On the cover: Visitors often assume Arlo Guthrie’s iconic 1967 song “Alice’s Restaurant” is based on the local eatery. But according to co-owner Andy Kerr, there is no correlation whatsoever between the two. A woman named Alice Taylor and her family bought the Woodside property and its buildings in 1960, transformed it into a restaurant and named it after her. Photo by Magali Gauthier/The Almanac.



Alice’s Restaurant offers a more extensive menu during the week. The menu is limited on weekends so staff can better manage all the orders from the surge of visitors.

A benefit event for local non-profits supporting kids & families

PALO ALTO WEEKLY

Moonlight Run & Walk

AT PALO ALTO BAYLANDS

Friday, Oct. 11, 2019

5K Run & Walk • 10K Run Half Marathon

Presented by City of Palo Alto

PRESENTED BY

REGISTER: PaloAltoOnline.com/moonlight_run

CORPORATE SPONSORS

PALO ALTO BLACK & WHITE BALL

The Palo Alto Recreation Foundation in partnership with the City of Palo Alto and the Palo Alto Weekly present

FRI 10.4.19

You’re invited to the Palo Alto Black & White Ball on Friday, October 4th at the iconic Lucie Stern Community Center. Join us in celebrating the City of Palo Alto’s 125th birthday and Palo Alto Weekly’s 40th anniversary. Spend the evening mingling with friends & neighbors, dancing to live music, & enjoying food & drinks from your favorite local restaurants.

Buy Tickets: parecfoundation.org

All proceeds benefit the Palo Alto Recreation Foundation (PARF) which helps fund our City’s most cherished community events, recreational & wellness programs for all ages, while enhancing the extraordinary quality of life in Palo Alto.

UNEVEN GROUND

continued from page 8

the lawsuit, in an Aug. 16 press statement. “We will not stand for it. We’re fighting back against this racist policy, and we’re going to win the fight to protect immigrant families.”

When the rule takes effect, Weatherby said, the nonprofit is planning to coordinate with nearby free immigrant legal aid organizations to help clients work through their options. If they determine they have to stop using food programs, people will still be able to access food from Second Harvest.

That, of course, will put increased pressure on the food bank to fight local hunger.

While Weatherby said she was confident the food bank could rise to the challenge, she added, “It’s not good policy for our community for people to not have access to basic food supports.”

Another less well-known shift that could dramatically affect who accesses services like CalFresh is a proposed rule change that would eliminate the concept of “broad-based categorical eligibility.”

Currently, that rule permits states to have some flexibility in how they administer programs like CalFresh; the state can now cross-qualify households without requiring separate applications, and screen households at higher income levels based on other significant household expenses like housing, medical and child care costs.

“That’s really important to an area like here (with) an extremely high cost of living,” Weatherby said. If it takes effect, many people Second Harvest works with would be taken immediately off of CalFresh, she noted.

The proposed rule is open to public comment until Sept. 23. Go to is.gd/CalFresh304 to submit comments. ■

Kate Bradshaw reported this story as part of her University of Southern California Annenberg Center for Health Journalism 2019 California Fellowship, with engagement support from the center’s interim engagement editor, Danielle Fox.

LEHUA GREENMAN



“The loving memories of those we lost on 9/11 will never fade away. Wishing you Peace on Patriot Day and always.”

650.245.1845 COMPASS

Resolution No. 2169_ (2019)

RESOLUTION OF INTENTION TO ANNEX CERTAIN TERRITORY TO THE WEST BAY SANITARY DISTRICT ON-SITE WASTEWATER DISPOSAL ZONE

Lands of Stone

The District Board of West Bay Sanitary District finds and determines as follows:

- A. This Resolution of Intention is adopted pursuant to the District’s “Zone Master Annexation Resolution” (“ZOMAR”), which was adopted by the District Board August 12, 1996. The provisions of ZOMAR are incorporated by reference into this Resolution of Intention.
- B. The District has received an application to annex a parcel of real property (the “Parcel”) to the District’s On-Site Wastewater Disposal Zone (the “Zone”). The Parcel is described in Exhibit “A” attached to this Resolution of Intention and the description contained in the Exhibits are incorporated by reference. The name and address of the applicants and the number, type, volume and location of on-site wastewater disposal systems which are proposed to operate on the parcels to be annexed are described in Exhibit “B” attached to this Resolution of Intention and the information contained in the Exhibit are incorporated by reference.
- C. The applicants have demonstrated to the satisfaction of the District Board that the Parcel constitutes “real property” for the purposes of Section 2(b) of ZOMAR in that:
 - X All of the conditions described in Subsections i., ii., iii., iv. and v. of ZOMAR Section 2(b) are satisfied; or
 Other conditions exist which demonstrate that the Parcel will benefit directly or indirectly from the activities of the Zone. If applicable, those conditions are also set forth in Exhibit “B” and are incorporated by reference.
- D. All of the conditions and requirements of ZOMAR Sections 2(a), 2(c), 2(d) and 2(e) have been fully satisfied.

In consideration of the foregoing findings and determinations,

IT IS RESOLVED by the District Board as follows:

- 1. It is the intention of the District Board to annex the Parcel to the Zone pursuant to the provisions of ZOMAR and applicable provisions of law.
- 2. In conjunction with a meeting of the District Board to be duly and regularly called and conducted, the Board will conduct a Public Hearing for the purpose of considering all matters pertaining to this Resolution of Intention.

The time, date and place of the Public Hearing are:

Date: October 9, 2019

Time: 7:00 PM

Place: Bay Sanitary District Offices, 500 Laurel Street, Menlo Park, CA 94025

At the Public Hearing, all interested persons will be heard.

- 3. This Resolution of Intention shall be published and copies shall be delivered to the persons and entities as specified in ZOMAR Section 2(e)(i).
- 4. A true copy of this Resolution of Intention shall promptly be filed for record in the office of the County Recorder of the County of San Mateo.
- 5. The District Manager shall cause the matters set forth in Sections 3 and 4 of this Resolution of Intention to be completed as directed.

Exhibit A

400 COURT STREET
REDWOOD CITY, CA 94063 July 30, 2019

EXHIBIT A PAGE 1 OF 3 ANNEXATION TO WEST BAY SANITARY DISTRICT
GEOGRAPHIC DESCRIPTION

All that certain real property situate in the Town of Portola Valley, County of San Mateo, State of California, being all of that property described in that certain Interpositional Transfer Deed recorded on December 1, 2017 as Document Number 2017-107815, along with portions of Bear Gulch Drive and Golden Oak Drive as shown on that certain Tract Map No. 718 entitled “Alpine Hills Unit 3” filed for record on May 24, 1955, in Book 42 of Maps, at pages 27-29, San Mateo County Records, State of California, and being more particularly described as follows:

BEGINNING at the northerly centerline intersection of Golden Oak Drive and Bear Gulch Drive;

Thence (Course 1) North 13°50’00” East, 30.00 feet to the intersection of the existing West Bay Sanitary District boundary and the northerly right of way line of said Golden Oak Drive and the **TRUE POINT OF BEGINNING** of this description;

Thence continuing easterly along said right of way line and said existing district boundary, (Course 2) South 74°10’00” East, 29.01 feet;

Thence leaving said existing district boundary and said right of way line, (Course 3) South 15°50’00” West, 60.00 feet to the southerly right of way line of said Golden Oak Drive, and the southeasterly right of way line of said Bear Gulch Drive, and the beginning of a non-tangent curve, concave southeasterly, whose radius bears South 15°50’00” West;

Thence continuing along said southeasterly right of way line the following three (3) Courses:

- 4. Along said curve, concave southeasterly, having a radius of 20.00 feet, a chord length of 22.68 feet, through a central angle of 69°02’21”, for an arc length of 24.03 feet;
- 5. South 36°49’39” West, 110.88 feet to the beginning of a tangent curve, concave northwesterly;
- 6. Along said curve, concave northwesterly, having a radius of 225.00 feet, a chord length of 16.93 feet, through a central angle of 4°19’44”, for an arc length of 17.00 feet to the northerly corner of said property described in said Interpositional Transfer Deed;

Thence leaving said southeasterly right of way line, along the boundary of said property described in said Interpositional Transfer Deed, the following five (5) Courses:

- 7. South 32°01’02” East, 273.29 feet;
- 8. South 58°54’26” East, 160.00 feet;
- 9. South 35°30’00” West, 255.00;
- 10. North 58°30’48” West, 603.02 feet to the southerly right of way line of said Bear Gulch Drive and the beginning of a non-tangent curve, concave southerly, whose radius point bears South 11°30’40” East;

Sheet 1 of 3

Exhibit B

WEST BAY SANITARY DISTRICT
EXHIBIT “B”
SITE LOCATION
180 BEAR GULCH DRIVE
PORTOLA VALLEY, CA
SETPIC TANK EFFLUENT PUMPING (STEP) SYSTEM



Legend:

- Gravity Main
- Manhole
- OWDZ Force Main
- OWDZ

(1) Septic Tank Effluent Pumping (STEP) System
200 Gallons Per Day (GPD)
APN: 079-122-270
Lands of Stone
180 Bear Gulch Drive
Portola Valley, CA
Location of system: East center of property near Bear Gulch Drive

Art and community among the redwoods

By Matthew Vollrath
Special to The Almanac

In 1963, residents of Kings Mountain, a small community in the tree-filled hills of Woodside, had a meeting. They decided they needed their own fire brigade, seeing as they lived in the middle of a forest and the nearest fire house was 10 miles away.

So that year, they held an art fair. They dolled up a red barn and invited artists from the community to show and sell their work. With the \$50 they raised, the Kings Mountain Volunteer Fire Brigade was formed.

Fifty-six years later, the Kings Mountain Art Fair has become a Labor Day Weekend tradition. From Aug. 31 through Sept. 2, a serene redwood grotto off Skyline Boulevard filled once again with fairgoers, artists, and local volunteers for a community event that unites the beauty of nature with that of local art.

One of the fair's defining features is that it is run entirely by volunteers. Each year, 400 people from the Kings Mountain community — a large subset of its residents — come together to plan the event, provide information and activities,

and cook pancakes and burgers for hundreds of guests.

Volunteering is a highly intergenerational affair, Ken McIntyre, a 25-year Art Fair volunteer, explained. The volunteers range from residents well into their 80s to children as young as 4. "We're always looking for younger people to step up and take it on," said McIntyre. Young children start in the "cook shack" clearing trays and washing dishes, and often continue volunteering for many years thereafter, he added.

For most volunteers, the work starts about a week before the fair. But for Bev Abbot, the event's executive director, it's a job that keeps her busy year-round. Starting in February, Abbot begins the process of choosing the 130-some artists who will be featured that year based on a number of criteria specific to the fair.

"The requirement that the artists make their art [themselves] sets us apart," Abbot noted. All artists must also be present in person at the event, which she said enhances the experience for art-buyers. "We encourage our customers to go around and meet with the artists," she said.



Photo by W. Goebner/Courtesy of Kings Mountain Art Fair

Strollers and shoppers can find an amazing array of artwork and craftwork at the Kings Mountain Art Fair.

"They love to talk about their art, and then you get a real sense of how they created it. It has more meaning."

The artists, who hail mainly from Northern California, represent a wide variety of media and styles—everything from painting, pottery and sculpture to clothing, jewelry, woodworking, and clock-making.

Justine Tatarsky, known in the

local art world by her middle name, Tot, creates tiles with vivid glazes and intricate tessellated designs.

"Tessellated patterns are patterns that repeat in all directions," said Tatarsky. "That's something that I kind of got fascinated with after years of working in this medium." Her designs are inspired by a lifelong interest "in bodies, and human

relationships, and a feeling that people are part of nature," she said.

Ryan Spangler, a jade artist who specializes in jewelry, gives new meaning to the term "local art." All his pieces are made from jade he himself unearths in nearby mountain ranges.

"Because jade is such a tough

See **ART**, page 19

Hitchcock spoof a TheatreWorks triumph

By Karla Kane

THEATER REVIEW

Equal parts loving tribute to and gleeful spoof of the work of "master of suspense" and cinematic hero Alfred Hitchcock, TheatreWorks Silicon Valley's "The 39 Steps" is a winner. It's surely one of this year's must-sees, especially for Hitchcock fans.

The show, adapted by British actor/writer Patrick Barlow, based on the 1935 film (which itself is loosely based on John Buchan's 1915 novel), utilizes just four actors playing 100 or so characters, often in very rapid succession, as well as serving as the on-stage Foley artists, creating charmingly low-fi sound effects. The performers exist in a show-within-a-show universe as members of a 1930s theater troupe who must frantically pull their production together without any outside or technical assistance and with all the buffoonery and mishaps on full view.

The story, straight out of Hitchcock's version, concerns Richard Hannay (Lance Gardner), ennui-struck and moping around his London flat. Hannay, looking for something "pointless" to kill time with, heads to

the music hall for a performance by "Mr. Memory" (Cassidy Brown, in one of many roles), a man able to store vast amounts of trivia in his head. A mysterious foreign lady, Annabella (Annie Abrams), sits in the theater seat next to Hannay before abruptly stopping the show by firing a gun, asking Hannay for help, divulging that she's an agent working to thwart the smuggling of top-secret air defense plans out of the country and winding up stabbed in the back.

And we're off and running, with Hannay on the lam and desperate to both clear his own name and complete Annabella's mission. Along the way he meets classic cool Hitchcock blonde Pamela (Abrams again), Highland oddballs, villainous probable-Nazis and many more, and must endure all manner of hijinks — from hanging off a train bridge to impersonating a milkman — during his fugitive journey from London to Scotland and back again.

Little homages to some of Hitchcock's trademarks, including references to other films, are

sprinkled throughout. While the plot is both silly and suspensefully exciting, the real magic is in watching the cast (rounded out by Ron Campbell, also playing countless roles), do their zany, slapstick, screwball and oh-so-British, Scottish and occasionally Germanic stuff — switching characters, accents (kudos, dialect coach Janel Miley) and costumes seemingly at the speed of light. Some of my favorite bits include the frantic moving of a road-blocking flock of sheep, an exquisitely choreographed handcuffed chase-across-the-moors routine and every time Campbell and Brown raise their hats and thank each other in the music hall.

Director Leslie Martinson and team display expert timing, with great scenic design by David Lee Cuthbert, lovely costumes by Cathleen Edwards (an important feature of this quick-change show), lighting by Steven B. Mannshardt and sound by Cliff Caruthers. And all four actors are superb, with Gardner giving Hannay the posh voice and manner reminiscent of Matt Berry in "Toast of London," and the three role switchers proving



Kevin Berne/TheatreWorks

Richard Hannay (Lance Gardner) tries to pry a map out of Annabella Schmidt's (Annie Abrams) lifeless hands in TheatreWork's "The 39 Step," running through Sept. 22.

incredibly nimble. Period-and-place-appropriate music (think George Formby) helps set the scene further.

"The 39 Steps" really manages to capture the brilliance of Hitchcock's style and spoof it in a way that just plain works. It's all much better experienced than read about, so my best advice is to catch a performance ASAP. And take a lesson from Hannay: You never know who the mysterious stranger sitting next to you in the theater may turn out to be. ■

INFORMATION

What: "The 39 Steps."
Where: Mountain View Center for the Performing Arts, 500 Castro St.
When: Through Sept. 22; show times vary.
Cost: \$35-\$95.
Info: theatreworks.org.

Karla Kane is the arts and entertainment editor for the Palo Alto Weekly, The Almanac's sister paper.

ART

continued from page 18

stone, it erodes out of the mountains and tumbles down into the rivers,” he explained. Every few months, he and his team hike into Big Sur or the foothills of the Sierra Nevada to search for the stone. “You have to make sure the geology’s somewhat right, and if you get lucky, you’ll find a piece. But it’s not easy to find, so it’s quite the adventure,” Spangler said.

One of the fair’s longest-running acts is landscape painter Rebecca Holland. Holland, one

of several “Mountain Artists” who live in Kings Mountain, has been featured at the fair since the very first one 56 years ago.

“I wasn’t a professional artist [back then]. The neighbors came over and just pulled some of my drawings off the wall,” she recalled. “This show really encouraged me: They said, ‘we need to buy a fire truck, and you need to help us — you need to paint and sell your artwork!’”

When it comes to inspiration, Holland says, she looks no further than her picturesque home. Her paintings, distinctive for their eye-popping colors and

surreal use of light, capture the beauty of the forests, foothills, and oceans around her. “It’s just where I live, you know? This is it,” she said.

As they have since the beginning, proceeds from the event mainly benefit the Kings Mountain Fire Brigade. The firehouse has 15 men and women, all volunteers, who receive the same training, and many of the same responsibilities, as municipal firefighters. The brigade responds to over 250 calls per year; it helped fight the 60-acre Skeggs fire near Woodside in September 2017.

Some of the funds also go to the Kings Mountain Elementary School, a three-room schoolhouse serving 60 children in grades K-5. In addition to proceeds from art sales, the school also raises money by selling “Grandma Jenny’s giant cookies,” massive homemade treats some 8 or 9 inches in diameter.

The cookie-baking operation has been a highlight of the fair for decades, said Amber Stariha, one of the elementary school parents in charge of it this year. The parents bake over 4,000 cookies at an industrial bakery in San Francisco the Saturday

before the fair; then, on fair days, the school kids load them into red wagons and sell them \$5 each. As Abby Zantos, a Kings Mountain Elementary student, said, “My mommy forces us to do it every year because our job is to look cute.”

But although fundraising was the original purpose of the fair, for the residents of Kings Mountain, the event has come to mean something more. “Community members who haven’t seen each other during the year, who are busy — everyone comes together,” said Abbot. “It’s a three-day event that we all really love.” ■

Public Notices

995 Fictitious Name Statement

LAW OFFICE OF KHLOE LEE
FICTITIOUS BUSINESS NAME STATEMENT
File No.: 282074
The following person (persons) is (are) doing business as:

Law Office of Khloe Lee, located at 303 Twin Dolphin Dr. Ste. 600, Redwood City, CA 94065, San Mateo County.

Registered owner(s):
KYOUNGHWA LEE

138 Fleetwood Dr.
San Carlos, CA 94070
This business is conducted by: An Individual.

The registrant commenced to transact business under the fictitious business name(s) listed above on Nov. 16, 2015. This statement was filed with the County Clerk-Recorder of San Mateo County on July 30, 2019.
(ALM Aug. 28; Sep. 4, 11, 18, 2019)

SEAM Partners
FICTITIOUS BUSINESS NAME STATEMENT
File No.: 282199

The following person (persons) is (are) doing business as:
SEAM Partners, located at 592 Sand Hill Circle, Menlo Park, CA 94025, San Mateo County.

Registered owner(s):
ED REV II LLC

592 Sand Hill Cir
Menlo Park, CA 94025
California
This business is conducted by: A Limited Liability Company.

The registrant commenced to transact business under the fictitious business name(s) listed above on 06-26-2019. This statement was filed with the County Clerk-Recorder of San Mateo County on August 9, 2019.
(ALM Aug. 21, 28; Sep. 4, 11, 2019)

COLSIN TRUCKING
FICTITIOUS BUSINESS NAME STATEMENT
File No.: 282204

The following person (persons) is (are) doing business as:
Colsin Trucking, located at 1928 Cooley Ave. Apto-60, East Palo Alto, CA 94303, San Mateo County.

Registered owner(s):
ADOLFO LOPEZ LOPEZ

1928 Cooley Ave. Apto-60
East Palo Alto, CA 94303
This business is conducted by: An Individual.

The registrant commenced to transact business under the fictitious business name(s) listed above on 8/01/2019. This statement was filed with the County Clerk-Recorder of San Mateo County on August 12, 2019.
(ALM Aug. 21, 28; Sep. 4, 11, 2019)

DUOTECH
FICTITIOUS BUSINESS NAME STATEMENT
File No.: 282260

The following person (persons) is (are) doing business as:
Duotech, located at 1134 Crane Street Suite 216, Menlo Park, CA 94025, San Mateo County.

Registered owner(s):
MUSA AHMADU KIDA
7 Ikoyi Club Road
Lagos Lagos Nigeria
ADEGBOYEGA MABOGUNJE
2353 Thompson Court
Mountain View, CA 94043
This business is conducted by: A General Partnership.

The registrant commenced to transact business under the fictitious business name(s) listed above on March 23, 2004. This statement was filed with the County Clerk-Recorder of San Mateo County on August 15, 2019.
(ALM Aug. 21, 28; Sep. 4, 11, 2019)

EQUIST PERFORMANCE
FICTITIOUS BUSINESS NAME STATEMENT
File No.: 282279

The following person (persons) is (are) doing business as:
Equist Performance, located at 130 Hildebrand Rd., La Honda, CA 94020, San Mateo County.

Registered owner(s):
SUZETTE HAINES
130 Hildebrand Rd.
La Honda, CA 94020

This business is conducted by: An Individual.
The registrant commenced to transact business under the fictitious business name(s) listed above on N/A. This statement was filed with the County Clerk-Recorder of San Mateo County on August 19, 2019.
(ALM Sep. 4, 11, 18, 25, 2019)

WPV-READY
WPV-CERT
FICTITIOUS BUSINESS NAME STATEMENT
File No.: 282373

The following person (persons) is (are) doing business as:
1.) WPV-Ready, 2.) WPV-CERT, located at 808 Portola Valley, Portola Valley, California 94028, San Mateo County.

Registered owner(s):
CITIZENS FOR EMERGENCY RESPONSE AND PREPAREDNESS PROGRAM, INC.
808 Portola Road,
Portola Valley, California 94028
California

This business is conducted by: A Corporation.
The registrant commenced to transact business under the fictitious business name(s) listed above on N/A. This statement was filed with the County Clerk-Recorder of San Mateo County on August 26, 2019.
(ALM Sep. 4, 11, 18, 25, 2019)

MANDY MONTOYA
FICTITIOUS BUSINESS NAME STATEMENT
File No.: 282384

The following person(s) is (are) doing business as:
Mandy Montoya, located at 1000 El Camino Real, Menlo Park, CA 94025, San Mateo County.

Registered owner(s):
AMANDA MONTOYA
2060 Sterling Avenue
Menlo Park, CA 94025

This business is conducted by: An Individual.
The registrant commenced to transact business under the fictitious business name(s) listed above on N/A. This statement was filed with the County Clerk-Recorder of San Mateo County on August 27, 2019.
(ALM Sep. 11, 18, 25; Oct. 2, 2019)

997 All Other Legals

ORDER TO SHOW CAUSE FOR CHANGE OF NAME SUPERIOR COURT OF THE STATE OF CALIFORNIA FOR THE COUNTY OF SAN MATEO

Case No.: 19CIV04452
TO ALL INTERESTED PERSONS:
Petitioner: DAVID ZEKE CHEN filed a petition with this court for a decree changing names as follows:
DAVID ZHANG to DAVID ZEKE CHEN.

THE COURT ORDERS that all persons interested in this matter appear before this court at the hearing indicated below to show cause, if any, why the petition for change of name should not be granted. Any person objecting to the name changes described above must file a written objection that includes the reasons for the objection at least two court days before the matter is scheduled to be heard and must appear at the hearing to show cause why the petition should not be granted. If no written objection is timely filed, the court may grant the petition without a hearing.

NOTICE OF HEARING: September 24, 2019, 9:00 a.m., Dept.: PJ of the Superior Court of California, County of San Mateo, located at 400 County Center, Redwood City, CA 94063.

A copy of this ORDER TO SHOW CAUSE shall be published at least once each week for four successive weeks prior to the date set for hearing on the petition in the following newspaper of general circulation, printed in this county:
THE ALMANAC
Date: August 8, 2019
/s/ John L. Grandsaert
JUDGE OF THE SUPERIOR COURT
(ALM Aug. 21, 28; Sep. 4, 11, 2019)

ORDER TO SHOW CAUSE FOR CHANGE OF NAME SUPERIOR COURT OF THE STATE OF CALIFORNIA FOR THE COUNTY OF SAN MATEO

Case No.: 19CIV04931
TO ALL INTERESTED PERSONS:
Petitioner: JOAN RINGSTAFF filed a petition with this court for a decree changing names as follows:
JOAN RINGSTAFF to JOAN RAVIER.

THE COURT ORDERS that all persons interested in this matter appear before this court at the hearing indicated below to show cause, if any, why the petition for change of name should not be granted. Any person objecting to the name changes described above must file a written objection that includes the reasons for the objection at least two court days before the matter is scheduled to be heard and must appear at the hearing to show cause why the petition should not be granted. If no written objection is timely filed, the court may grant the petition without a hearing.

NOTICE OF HEARING: October 11, 2019, 9:00 a.m., Dept.: PJ of the Superior Court of California, County of San Mateo, located at 400 County Center, Redwood City, CA 94063.

A copy of this ORDER TO SHOW CAUSE shall be published at least once each week for four successive weeks prior to the date set for hearing on the petition in the following newspaper of general circulation, printed in this county:
THE ALMANAC
Date: August 27, 2019.

/s/ Jonathan E. Karesh
JUDGE OF THE SUPERIOR COURT
(ALM Sep. 11, 18, 25; Oct. 2, 2019)

Town of Woodside Notice of Availability/ Intent to Adopt a Mitigated Negative Declaration Public Review Period: September 9, 2019, through October 9, 2019

Project Title: Old La Honda Road Bridge Replacement Project (Bridge Number 35C0190)

Project Description: The Town proposes to replace the Old La Honda Road Bridge (Bridge Number 35C0190) with an 84-inch diameter culvert. The culvert would be installed under the existing bridge, supported by new headwalls, and the area under the bridge would be filled with lean (lighter) concrete.

Project Location: The proposed Project is located at the existing two-lane bridge on Old La Honda Road, approximately 0.1 miles west of the intersection of Old La Honda Road and Portola Road.

Project Construction: One lane traffic control would be used during construction and driveway access for local residents would be maintained through the construction period. No detours are planned. The load capacity of the bridge would not be reduced since none of the structural components of the bridge would need to be removed. The staging area would be located nearby on the southwest corner of the intersection of Old La Honda Road and Portola Road. Construction is anticipated to take approximately 18 weeks and would be conducted during the summer and early fall when the culvert under the bridge is dry. Project construction is anticipated during 2020.

Lead Agency: Town of Woodside
P.O. Box 620005 (Mail)
2955 Woodside Road, Woodside, CA 94062

Contact Person: Jackie Young, AICP CEP, Planning Director
Tel. (650) 851-6790 / Fax. (650) 851-2195

Public Hearing: The Woodside Planning Commission meeting to consider the Mitigated Negative Declaration is scheduled for October 16, 2019, at 6:00 p.m. in Independence Hall located at 2955 Woodside Road. Notice of the Planning Commission public hearing will also be provided in a newspaper of local circulation, to property owners within 300 feet of the project, and along the length of Old La Honda Road and adjoining roads with primary access off of Old La Honda Road, and to all organizations or individuals who have previously requested such notice in writing.

The Mitigated Negative Declaration, Project Plans, and referenced documents are available for review during normal business hours, 8:00 a.m. to 12:00 p.m. and 1:00 p.m. to 5:00 p.m. at Woodside Town Hall, located at 2955 Woodside Road in Woodside, California 94062. The Mitigated Negative Declaration will be available on the Woodside website: www.woodsidesidetown.org

Please submit any written comments on the Initial Study/Mitigated Negative Declaration by 5:00 p.m. on October 9, 2019 to Jackie Young at jyoung@woodsidesidetown.org or by mail at the Town of Woodside, at the address listed above.

Calendar

MEETINGS, MUSIC, THEATER, FAMILY ACTIVITIES AND SPECIAL EVENTS

Visit AlmanacNews.com/calendar to see more calendar listings

Theater

'The 39 Steps' TheatreWorks' comedy returns in a spoof of Alfred Hitchcock's silver-screen classic, in which a London man fights to clear his name after stumbling upon a ring of spies. Through Sept. 22; times vary. \$25-\$60; discounts available; pricing subject to change. Mountain View Center for the Performing Arts, 500 Castro St., Mountain View. theatreworks.org

'Admissions' The Los Altos Stage Company presents "Admissions," a new satire that takes a no-holds-barred look at privilege and power in liberal white America. Sept. 11, 18 and 25, 8 p.m. \$20-\$30. Bus Barn Theatre, 97 Hillview Ave., Los Altos. losaltosstage.org

'An Ideal Husband' In this play directed by Jenny Hollingsworth, an ideal husband explores political corruption, public persona versus private virtue and the inevitable disappointments that come with holding others to one's own rigid ideals. Through Sept. 15; times vary. \$34; discount for students, seniors. The Pear Theatre, 1110 La Avenida St., Mountain View. thepear.org

'Hickorydickory' The Dragon Theatre presents "Hickorydickory," a tale about a girl who is stuck at age 17 for eternity. Thursday-Sunday, Sept. 7-29; times vary. \$39.50; discounts for students, seniors. The Dragon Theatre, 2120 Broadway, Redwood City. dragonproductions.net

Festivals & Fairs

'A Cup of Coffee: Stories from Kosovo and Beyond' The Menlo Park Library hosts its fourth annual storytelling festival with tandem storytellers sharing traditional and contemporary tales. Sept. 11, 7-8 p.m. Free. Menlo Park Library, 800 Alma St., Menlo Park. menlopark.org

Talks & Lectures

'The Day the Music Died' This illustrated lecture presented by musician and educator Dulais Rhys explores the lives, careers and tragic deaths of Buddy Holly, Ritchie Valens and the Big Bopper. Sept. 17, 6:30-7:30 p.m. Free. Menlo Park Library, downstairs program room, 800 Alma St., Menlo Park. Search eventbrite.com for more info.

'10 Minutes to Live' "10 Minutes to Live: Now What?" features a filmed interview with Rick Bundschuh, a pastor in Hawaii who received a false alert of an incoming ballistic in 2018. How to prioritize what's important before, during and after near-death experiences will be explored. Sept. 11, 6:30-7:30 p.m. Free. Bethany, 1095 Cloud Ave., Menlo Park. vimeo.com/349465524

'The Climate's Impact on Megacities — A New Concern for All' Dr. Michele Barry will describe health benefits and threats to megacities brought about by climate change and report on innovations in food security and environments designed and implemented in megacities and other urban areas to create a more resilient and healthy future. Sept. 18, 5-6:30 p.m. Free. Ladera Community Church, 3300 Alpine Road, Portola Valley. ladera.org/event/drbarry

Madeline Miller In her new novel "Circe," author Madeline Miller renders the mythological witch from Homer's "Odyssey" human, vivid and empathetic. Miller will converse with classics scholar Donna Zuckerberg. Sept. 13, 7:30-9 p.m. \$20; \$40 with book; discount for students. Kepler's Books, 1010 El Camino Real, Menlo Park. keplers.org

'The Vaping Phenomenon: What it is, why it happened, and what we can do about it' Dr. Halpern-Felsher presents her research on e-cigarettes, addiction and adolescent use of nicotine products. Sept. 11, noon-1 p.m. Free. Lucile Packard Children's Hospital Stanford Auditorium, 725 Welch Road, Stanford. Search eventbrite.com for more info.

Lindsay Lackey Author Lindsay Lackey launches her new middle-grade novel, "All the Impossible Things," about a young girl navigating the foster care system in search of where she belongs. Sept. 14, 3-5 p.m. Free. Kepler's Books, 1010 El Camino Real, Menlo Park. keplers.org

Storyteller Seung Ah Kim Seung Ah Kim shares the tale of Bari, the abandoned princess. On tour from her home in South Korea, she shares one of the oldest and best known epics in Korean mythology. Program content is suitable for adults and teens. Sept. 18, 7-8 p.m. Free. Menlo Park Library, 800 Alma St., Menlo Park. menlopark.org

Rebecca Kim Wells, Megan Whalen Turner and Elizabeth Fama Kepler's Books presents a panel discussion, featuring authors Rebecca Kim Wells, Megan Whalen Turner and Elizabeth Fama, who will moderate the discussion. Sept. 18, 7-8 p.m. Free. Kepler's Books, 1010 El Camino Real, Menlo Park. keplers.org

Submitting items for the Calendar

Go to AlmanacNews.com and see the Community Calendar module at the top right side of the page. Click on "Add your event." If the event is of interest to a large number of people, also e-mail a press release to Editor@AlmanacNews.com.

TV Station Tour Midpen Media Center hosts a public tour of its full HD studio for people interested in learning about television and film production programs. Sept. 12, 6-7 p.m. Free. Midpen Media Center, 900 San Antonio Road, Palo Alto. midpenmedia.org

Community events

Portola Valley Town Picnic Activities at this family friendly event include a Zots to Tots race at 10 a.m., food trucks, petting zoo and pony rides, music, face painting and more. Sept. 14, 11 a.m.-3 p.m. Free. Town Center, 765 Portola Road, Portola Valley. portolavalley.net

Menlo Oaks Yard Sale Driveways and yards of 20 to 30 homes in the Menlo Oaks neighborhood will be filled with items for sale and for free in a community yard sale sponsored by the neighborhood association. Sale will span 10 streets, including Menlo Oaks Drive and Berkeley and Colby avenues. Sept. 14, 9 a.m. to 1 p.m.; menlo-oaks.org.

Third Democratic Presidential Debate Watch The Ad hoc Committee for Democratic Presidential Debates hosts a public viewing of the Democratic presidential debates to listen to the leading candidates and hear what others think in a post-debate discussion. This event is not sponsored by any candidate. Sept. 12, 4:30-8:30 p.m. Free; food and drink available for purchase. Round Table Pizza, 1225 El Camino Real, Menlo Park. Search eventbrite.com for more info.

Open House at Onetta Harris Community Center During the Open House event, information about community services and programs will be provided along with food and prizes. Sept. 12, 6-8 p.m. Free. Onetta Harris Community Center, 100 Terminal Ave., Menlo Park. menlopark.org

Lessons & Classes

ESL Conversation Club Non-native and native English speakers talk together with the aim of developing English speaking and listening skills. No registration required. Wednesdays, 5-6 p.m. Free. Menlo Park Library, 800 Alma St., Menlo Park. menlopark.org

Ojo de Dios Hidden Villa hosts a crafting event to make Ojo de Dios, combinations of yarn and wood that were traditionally made as a celebration or blessing. Sept. 14, 1-1:45 p.m. Free. Hidden Villa, 26870 Moody Road, Los Altos Hills. hiddenvilla.org

Health & Wellness

Hike for Health The EcoCenter offers nature hikes to encourage participants to keep moving and stay healthy. Sept. 16, 9:30-11 a.m. EcoCenter, Baylands Nature Preserve, 2560 Embarcadero Road, Palo Alto. Search facebook.com/events for more info.

Home & Garden

Portola Valley Garden Share The Portola Valley Garden Share is an opportunity for adults and children to come together and share homegrown vegetables, fruits, herbs, flowers, honey, eggs, seeds, bulbs, seedlings, compost, etc. Sept. 14, 10-11 a.m. Free. Town Center, 765 Portola Road, Portola Valley. portolavalley.net

Family

West Bay Model Railroad Open House Long passenger and freight trains will run on a scenic two-level layout surrounded by industries, buildings, bridges, trestles and tunnels, while club members answer guests' questions. Sept. 14, Oct. 12, Nov. 9, 1-4 p.m. Free; donations accepted. Menlo Park CalTrain Station (south end), 1090 Merrill St., Menlo Park. Search facebook.com/wbmr for more info.

Museums & Exhibits

Public Tour: Anderson Collection The Anderson Collection features modern and contemporary American paintings and sculptures assembled by Harry W. and Mary Margaret Anderson and Mary Patricia Anderson Pence, a Bay Area family who built the collection over the last 50 years. Wednesdays, Saturdays and Sundays through Dec. 18, 12:30 p.m. Anderson Collection, 314 Lomita Drive, Stanford. events.stanford.edu

Public Tour: Outdoor Sculpture Walk, Museum A trained docent leads tours among the diverse collection of outdoor sculpture surrounding the Cantor Arts Center. Public tours are held the third Sunday of each month at 11:30 a.m., rain or shine. Sept. 15, 11:30 a.m.-12:30 p.m. Free. Stanford University, 450 Serra Mall, Stanford. arts.stanford.edu

Jan Prisco's 'Seascapes and Landscapes in Pastel' The Portola Art Gallery features Jan Prisco's exhibit, "Seascapes and Landscapes in Pastel." Through Sept. 30, 10:30 a.m.-4 p.m. Portola Art Gallery, 75 Arbor Road, Menlo Park. portolaartgallery.com

Film

Menlo Park Outdoor Movies This weekly event features outdoor screenings of films from all genres. Through Sept. 20; times vary. Burgess Park, 701 Laurel St., Menlo Park. menlopark.org

BraveMaker Film Screening and Panel BraveMaker presents a screening of "The Edge of Success" and a teen-led panel discussion on mental health awareness and suicide prevention. The film and discussion is recommended for students ages 13 and up. Sept. 12, 6-9 p.m. \$15; free for students ages 13-21. Fox Theatre, 2215 Broadway St., Redwood City. Search eventbrite.com for more info.

Portola Valley is ready to party this Saturday with annual picnic

Highlights include 'Zotts to Tots' run, Boy Scout burgers, and kids' activities

By Rick Radin
Almanac Staff Writer

Portola Valley will be continuing a long tradition on Saturday when the town comes together for its annual picnic.

"It has been going on for many decades," Stephen Gillett of the town's Parks and Recreation Committee wrote in an email. "We know it was around in the 1960s, but it could be even earlier."

The picnic is set for 11 a.m. to 3 p.m. at the Town Center at 765 Portola Road, and will include live music, children's activities and, of course, picnic food.

The children's activities will include face painting, a petting zoo, pony rides and a photo booth, Gillett wrote.

Food offerings will include the traditional hamburgers and hot dogs prepared by the Boy Scouts. There will also be food-truck

fare from Los Toluca Mexican restaurant in Sunnyvale and Sam's Chowder Mobile, Gillett wrote.

The 2018 picnic introduced new food choices and activities, and set a record for attendance as a result, he noted.

"We moved the picnic to September last year and we're doing that again this year," he wrote. "This is a result of optimizing for when families are back in town from summer vacations and kids are back to school."

The day will start off with Zotts to Tots, a 2.4-mile family run that will start at the Alpine Inn (Zott's) on Alpine Road at 10 a.m. and end at the picnic site at the Town Center.

Participants can register at portolavalley.net or in person from 9:15 to 9:45 a.m.

The cost to enter is \$20 for individuals, \$30 for couples and \$45 for a family of up to five people; the entry fee includes an event T-shirt. ■

Menlo Park Monthly Market Report
August 1 - August 31, 2019

11 COSTLY HOME INSPECTIONS PITFALLS
Free Report reveals what you need to know before you list your home for sale.
www.Rossetti11CostlyPitfalls.com

TOP 10 SALES*			
1. \$8,100,000 570 Berkeley Avenue	2. \$5,500,000 1485 Bay Laurel Drive	3. \$5,350,000 507 Enclada Way	4. \$5,300,000 1020 Windsor Drive
5. \$4,200,000 2055 Sterling Avenue	6. \$4,123,000 1336 Orange Avenue	7. \$3,850,000 501 Laurel Avenue	8. \$3,300,000 880 Colerain Avenue
9. \$2,950,000 2151 Action Avenue	10. \$2,800,000 699 Vine Street		

61 ACTIVE LISTINGS (-8%)	\$1,305 AVERAGE SALES PRICE/SQ FT (-3%)	\$2,527,188 AVERAGE SALES PRICE (-20%)
26 PENDING LISTINGS	36 AVERAGE SOLD DAYS ON MARKET (+20%)	1,913 AVERAGE APPROX SQ FT (-19%)
32 SOLD LISTINGS (+88%)	101.80% SALE/LIST PRICE (+0%)	1.90 MONTH SUPPLY (-91%)

*Source: REIS Listings for Single Family Properties | Excludes | Condos
August 2019 compared to July 2019

Making A Move?
Sellers Start Here: RossettiMarketValue.com
Buyers Start here: RossettiHomeFinder.com

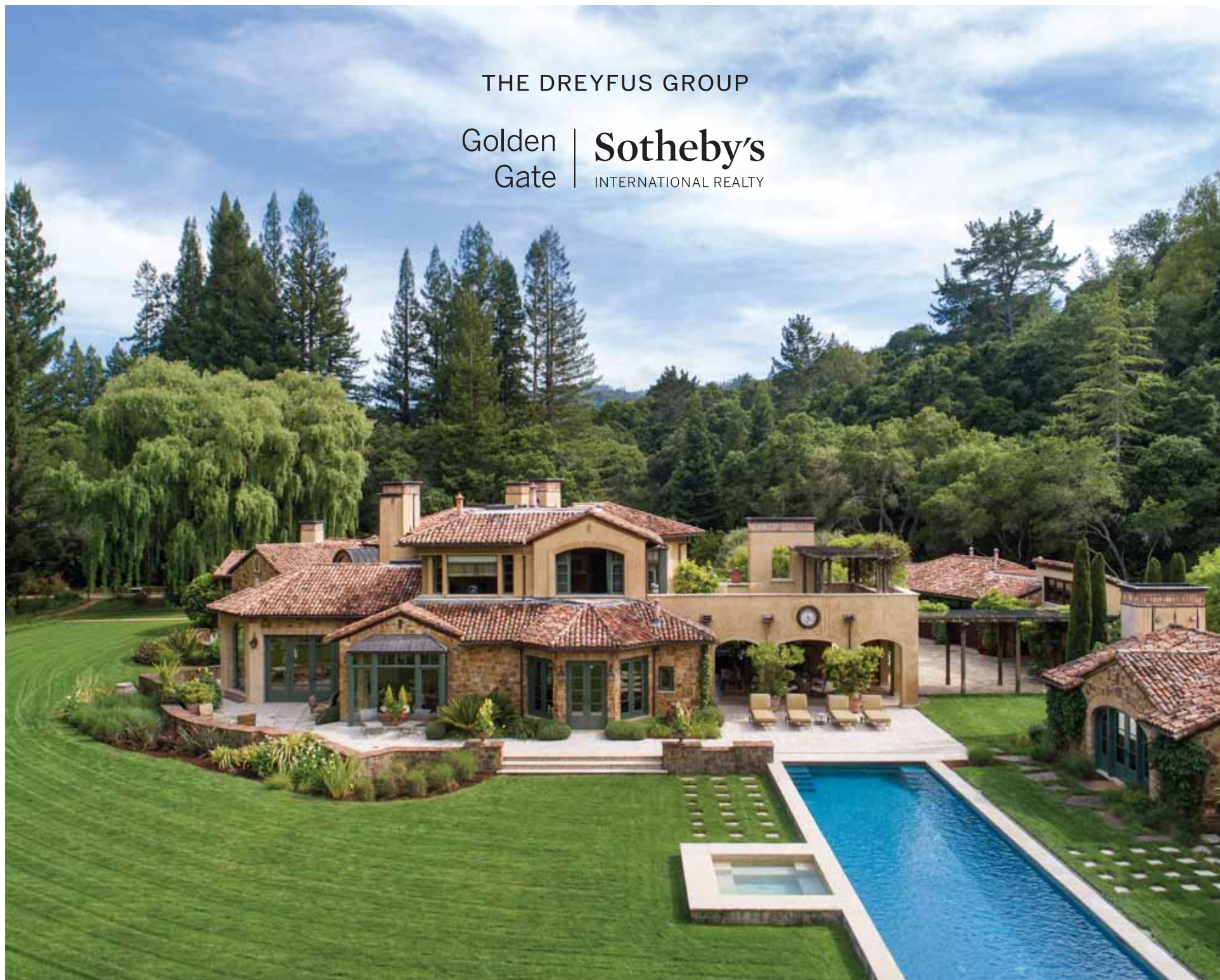
Gail Antoinette Rossetti
Founder | CEO | Broker
License #01179344

3525 Alameda De Las Pulgas Suite C Menlo Park, CA Phone: 650-854-4100

THE DREYFUS GROUP

Golden Gate

Sotheby's
INTERNATIONAL REALTY



Woodside Italian Villa

This elegant, Tuscan-style, country estate in Woodside offers security and privacy on 7.7 Acres is designed with unparalleled attention to detail and stunning imported materials. The home was built for entertaining with spacious guest accommodations and sizable grounds. This one-of-a-kind estate feels blissfully remote and private yet is close to all that the Peninsula has to offer.

Offered at \$39,000,000

[More at www.Dreyfus.Group](http://www.Dreyfus.Group)

#1 Producing Group, The Dreyfus Group
Golden Gate Sotheby's International Realty

Top 100 Agent Group Nationwide
Wall Street Journal / Real Trends

Michael Dreyfus
650.485.3476

m.dreyfus@ggsir.com

Lic. #01121795

Noelle Queen
650.427.9211

n.queen@ggsir.com

Lic. #01917593

Each Office is Independently Owned and Operated.



KAVANAUGH REAL ESTATE GROUP

LOTS OF LOTS

HOME SWEET HOME



231 & 241 Georgia Ln, Portola Valley
\$4,400,000
Open Sunday, 1 - 3 PM



229 Grove Dr, Portola Valley
\$4,500,000
Open Sunday, 2 - 4 PM



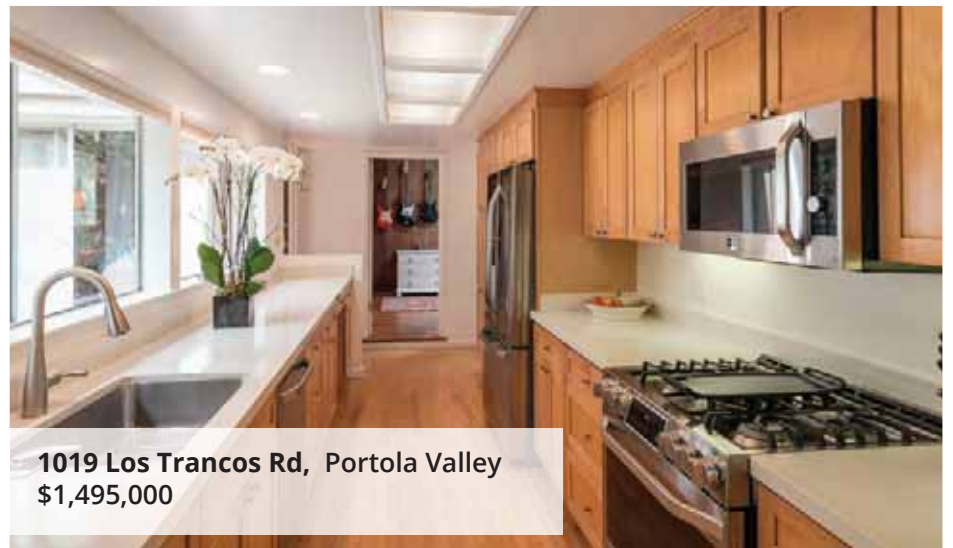
42 Santa Maria Ave, Portola Valley
\$1,800,000



1195 Westridge Dr, Portola Valley
\$3,995,000



501 Wayside Rd, Portola Valley
\$1,295,000



1019 Los Trancos Rd, Portola Valley
\$1,495,000



GINNY: 650.400.8076 | GKAVANAUGH@CAMOVES.COM | CALBRE# 00884747
JOHN: 415.377.2924 | JOHN.KAVANAUGH@CBNORCAL.COM | CALBRE# 02058127

The property information herein is derived from various sources that may include, but not be limited to, county records and the Multiple Listing Service, and it may include approximations. Although the information is believed to be accurate, it is not warranted and you should not rely upon it without personal verification. Real estate agents affiliated with Coldwell Banker Residential Brokerage are independent contractor sales associates, not employees. ©2019 Coldwell Banker Residential Brokerage. All Rights Reserved. Coldwell Banker Residential Brokerage fully supports the principles of the Fair Housing Act and the Equal Opportunity Act. Owned by a subsidiary of NRT LLC. Coldwell Banker and the Coldwell Banker Logo are registered service marks owned by Coldwell Banker Real Estate LLC.

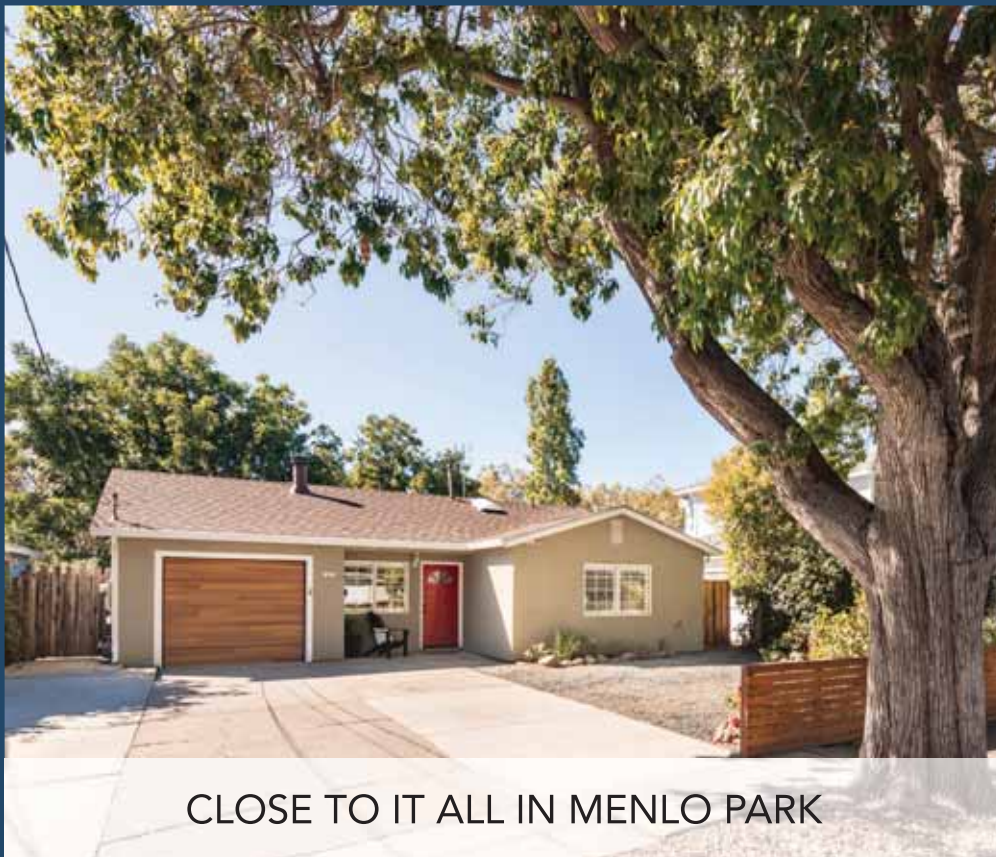


OPEN HOUSE

Saturday & Sunday, 1 - 5pm
Complimentary Refreshments

Michael Repka

650.900.7000
michael@deleonrealty.com
Managing Broker, DRE #01854880



CLOSE TO IT ALL IN MENLO PARK



1321 Carlton Avenue, Menlo Park

Sought-after Menlo Park provides the perfect backdrop for this 1,220 sq. ft. home (per county) on a lot of 6,000 sq. ft. (per county). Boasting a prime location that puts you just moments to the headquarters of Facebook and its numerous Peninsula campuses, as well as major San Francisco and Silicon Valley commute routes, this is an ideal home for an active Bay Area lifestyle. Offering 3 bedrooms and 2 baths, plus newly installed floors, spacious formal rooms, a granite-appointed kitchen, and a private rear yard, this delightful home offers a comfortable retreat while still taking full advantage of its premier setting. Every major Bay Area tech center is in reach, as well as all of the exciting amenities of both downtown Menlo Park and Palo Alto. Plus, this neighborhood hosts several community events including a weekly mobile market and free festivals hosted by Facebook. Comfort, convenience, and close to it all – welcome home.

Offered at \$1,288,000

www.1321Carlton.com

650.900.7000 | michael@deleonrealty.com | www.deleonrealty.com | DeLeon Realty, Inc. | DRE #01903224

中文諮詢請聯繫 Audrey Sun 電話: 650.785.5822 | DRE # 01933274



OPEN HOUSE

Saturday & Sunday, 1 - 5pm
Complimentary Refreshments

Michael Repka

650.900.7000
michael@deleonrealty.com
Managing Broker, DRE #01854880



WOODSIDE HILLS BEAUTY WITH INCREDIBLE VIEWS



210 Hardwick Road, Woodside

Stunning Bay views stretch for miles from this 4-bedroom, 3-bath home, offering two levels and 2,530 sq. ft. of living space (per county, incl. finished basement) on a lot of nearly 1.2 acres (per county) enveloped by the peaceful serenity of Woodside Hills. Tall ceilings create an airy atmosphere, and walls of windows allow an abundance of natural light while also showcasing the home's spectacular surroundings. Enjoy a relaxing evening in the fireplace-centered living room, and inspire your inner chef in the kitchen with its sunny breakfast nook. The downstairs family room includes a large glass door to a deck, creating true California indoor/outdoor living. Four spacious bedrooms include the master suite, featuring an en suite bath with a relaxing tub. Outside, the entertainer's deck provides breathtaking views and alfresco delights amidst the home's magnificent setting. Topping it all off, this location puts you just moments to Woodside Plaza, Woodside Village, downtown Redwood City, and major commute routes.

Offered at \$2,988,000

www.210Hardwick.com

650.900.7000 | michael@deleonrealty.com | www.deleonrealty.com | DeLeon Realty, Inc. | DRE #01903224

中文諮詢請聯繫 Audrey Sun 電話: 650.785.5822 | DRE # 01933274



GULLIXSON

gullixson.com

2325 TIOGA DRIVE, MENLO PARK | SOPHISTICATED MENLO PARK HOME WITH BAY VIEWS
 3 bed, 3 bath / Beautifully remodeled / Main home ~3,655 sf + 2-car garage ~475 sf (Total sf = 4,130)
 Located at the top of Sharon Heights with views / Lovely gardens and a ~16,151 sf lot / Las Lomas schools / \$3,895,000



3 SHEARER DRIVE ATHERTON 3Shearer.com
 New Construction / 6 bed, 8.5 bath / 3 levels with elevator / ~28,690 sf lot



122 LAKEVIEW DRIVE WOODSIDE 122Lakeview.com
 Rare 20 acres on the edge of Atherton / Las Lomas schools



1 ODELL PLACE ATHERTON 1odell.com
 5 bed, 5.5 bath, office / ~5885 sf / Menlo Park Schools



RARE DOUBLE UNIT

1330 UNIVERSITY DR. #82 MENLO PARK gullixson.com
 Exquisite remodel in 2018 / 3 bed, 2.5 bath / Western hill views

RANKED #25 TEAM NATIONALLY,
 PER THE WALL STREET JOURNAL,
 2019 REPORT OF THE TOP RESIDENTIAL
 REAL ESTATE PROFESSIONALS
 (Published in June 2019).

COMPASS



MARY GULLIXSON
 650.888.0860
mary@gullixson.com
 DRE# 00373961



BRENT GULLIXSON
 650.888.4898
brent@gullixson.com
 DRE# 01329216

• •
 • •

Compass is a real estate broker licensed by the State of California and abides by Equal Housing Opportunity laws. License Number 01527235. All material presented herein is intended for informational purposes only and is compiled from sources deemed reliable but has not been verified. Changes in price, condition, sale or withdrawal may be made without notice. No statement is made as to accuracy of any description. All measurements and square footages are approximate.