

# The Almanac

THE HOMETOWN NEWSPAPER FOR MENLO PARK, ATHERTON, PORTOLA VALLEY AND WOODSIDE

MAY 7, 2021 | VOL. 56 NO. 35



WWW.ALMANACNEWS.COM

## COVID-19 transformed the world of outdoor education

Here's what local leaders say has changed

By Kate Bradshaw

A day at the Peninsula Forest and Beach School won't involve computers, Zoom or Wi-Fi. Instead, a recent school day there involved a group of young students wearing brightly colored masks at Twin Pines Park in Belmont, reading stories on a picnic blanket with their instructor, feeling tanbark with bare feet and going for a hike.

Perhaps that's why, since the start of the pandemic, the school has seen a tenfold increase in enrollment, from 15 families to 150. The demand has come largely from the school's expansion into providing customized learning programs for private family pods, according to Bonnie McKinney, owner and director of the Peninsula Forest and Beach School.

As data have increasingly found that COVID-19 spreads far less frequently outdoors than indoors — one study published in the Journal of Infectious Diseases found that it is nearly 19 times more likely to spread indoors than outdoors — the drive to find ways to educate children outdoors during the pandemic has led to new opportunities and obstacles for outdoor education providers.

And while adults throughout

the Peninsula are getting vaccinated against COVID-19 in growing numbers, children under 16 are not yet eligible for any vaccine and remain vulnerable to developing complications from COVID-19 that, though rare, can be life-threatening.

While private outdoor education providers like the Peninsula Forest and Beach School have seen skyrocketing demand, other providers have seen significant disruptions and have had to adapt quickly to deliver their programs in new ways.

Meanwhile, educational leaders whose work previously focused on environmental literacy efforts became the new expert consultants, working with school districts to safely bring classes outdoors.

Many questions remain about the future of outdoor education as the prevalence of COVID-19 declines.

We asked local leaders throughout the outdoor education industry to identify trends they've seen and share their insights about where things are headed.

### The growth of private learning pods

McKinney, whose outdoor school program has grown tenfold during the pandemic, said



Daniela Beltran B.

Teacher Jean Sternke reads a book to the children from Peninsula Forest and Beach School at Twin Pines Park in Belmont on May 4.

that a big part of the success is due to its flexibility in developing pod-based programs.

"That was the new innovation that ended up happening," she said. "We have over 15 private cohorts that didn't exist before."

The school works mainly with children ages 3 to 10 and sees the most interest among 3- to

7-year-olds. Its traditional programs run through public parks in partnership with the cities of Belmont and Redwood City, as well as the Golden Gate National Recreation Area in Montara, to teach children outdoors.

Some families the school works with have been extremely cautious about COVID-19, only

ordering groceries for delivery, rarely leaving the house and avoiding grandparents, McKinney said. Perhaps a mother is pregnant, or a family member has health conditions that demand extra caution. She said she carefully interviewed

See **OUTDOOR ED**, page 12

## Portola Valley School District parcel tax measure leading in early returns

By Angela Swartz

Measure S, a reduced parcel tax measure for the Portola Valley School District, is ahead in early results from Tuesday's special election.

By the close of election night on May 4, 75.3% of votes counted were in favor of the measure, which requires a two-thirds majority to pass, county election officials reported. Measure S

was the only item on San Mateo County's all-mail ballot.

The district is asking for less money than the current parcel tax, which is set to expire: \$471 per parcel annually versus the current rate of \$581. It would raise \$997,000 annually for the K-8 district. It has an eight-year term and would expire in 2029.

"Although we are happy to learn of the early result and the strong support from our community, it is important that

the Elections Office takes the time to count every vote," said Superintendent Roberta Zarea in a Wednesday email. "We are cautiously optimistic based on these initial results. A lot of work went into listening early on to our community so we could put a measure on the ballot that our community could get behind. Thank you to everyone who came out and supported our local PVSD schools and children."

Semi-official election results at 8:10 p.m. on election night show Measure S with 1,743 votes in support and 573 no votes (24.7%). Just two of these votes were turned in at voter centers; the rest were mailed to the Elections Office.

District officials are asking taxpayers for less because the district has made \$1.3 million in cuts over the last three years, said district Chief Business Officer Connie Ngo. The district

saved money by eliminating an assistant principal position at Corte Madera School; eliminating a district office classified staff position; freezing the hiring of the director of learning and innovation; eliminating 30 telephone lines; and reducing its workforce by seven teachers and classified staff positions through attrition, Ngo said.

Voters in March 2020 failed

See **PARCEL TAX**, page 17

INSIDE

VIEWPOINT 20 | ARTS 22 | FOOD 23

Read up-to-the-minute news on [AlmanacNews.com](http://AlmanacNews.com)



# exceptional health care in the new normal



*U.S. News & World Report recognizes Stanford Health Care among the top hospitals in the nation, based on quality and patient safety.*

**Stanford Health Care is ready to care for you, now and always.**

We continue to adapt and adhere to the most up-to-date safety guidelines, so you can feel confident getting the care you need.

To ensure your safety, we are:

- Screening both staff and patients for COVID-19
- Requiring and providing masks for all
- Staggering visits to allow for physical distancing in common areas
- Ensuring separate screening areas for symptomatic patients
- Sanitizing exam rooms after every patient

Don't delay your care. Appointments are available at our locations across the Bay Area and remotely by video visit.

[stanfordhealthcare.org/resumingcare](https://stanfordhealthcare.org/resumingcare)





## QUIET CUL-DE-SAC LOCATION IN THE HEART OF WOODSIDE

170 FOX HOLLOW ROAD | WOODSIDE | \$9,650,000 | 170FOXHOLLOW.COM

Premier central location | Approximately 3.1 acres | 4 bedrooms, office, family room, 4 full baths | ~6,420 square feet

Garage with 6 side-by-side entrances plus workshop | Swimming pool | Vast level areas for entertaining

Acclaimed Woodside Elementary School (K-8)



**HUGH  
CORNISH**  
& ASSOCIATES

[HughCornish.com](http://HughCornish.com)

Ranked #1 Agent in SF Bay Area  
Coldwell Banker, 2020

Ranked #30 Agent in the U.S.  
*The Wall Street Journal*, 2020

Over \$2.75 Billion in Sales



For a private showing of this extraordinary property, please contact:

**HUGH CORNISH**

650.619.6461  
[hcornish@cbtnorcal.com](mailto:hcornish@cbtnorcal.com)  
CalRE#00912143

**STEPHANIE ELKINS  
VAN LINGE**

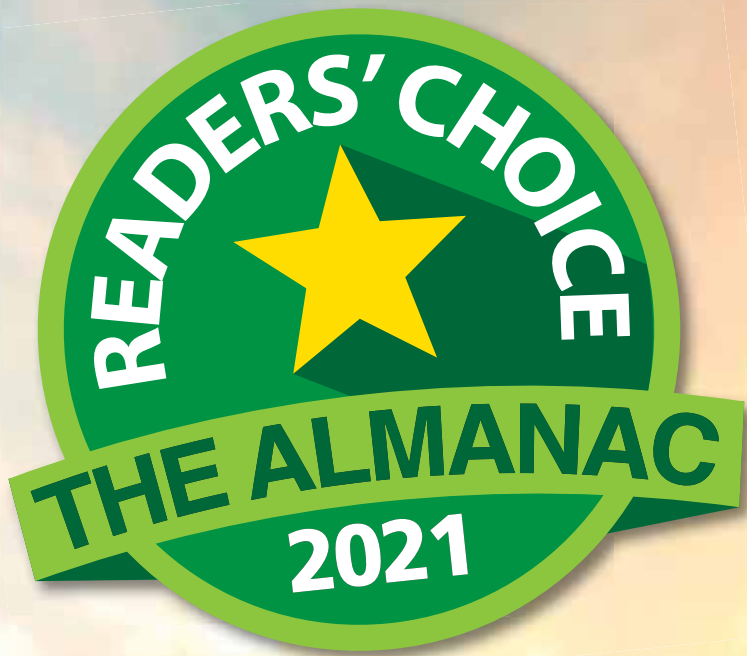
650.400.2933  
[stephanie.elkins@cbtnorcal.com](mailto:stephanie.elkins@cbtnorcal.com)  
CalRE#00897565



**GLOBAL  
LUXURY.**

RESIDENTIAL BROKERAGE

The property information herein is derived from various sources that may include, but not be limited to, county records and the Multiple Listing Service, and it may include approximations. Although the information is believed to be accurate, it is not warranted and you should not rely upon it without personal verification. Real estate agents affiliated with Coldwell Banker Residential Brokerage are independent contractor agents and are not employees of the Company. ©2021 Coldwell Banker Residential Brokerage. All Rights Reserved. Coldwell Banker Residential Brokerage fully supports the principles of the Fair Housing Act and the Equal Opportunity Act. Owned by a subsidiary of NRT LLC. Coldwell Banker and the Coldwell Banker Logo are registered service marks owned by Coldwell Banker Real Estate LLC, CalRE #01908304.



# IT'S TIME TO VOTE!

Celebrate outstanding local and independent businesses

GO ONLINE TO  
[AlmanacNews.com/readers\\_choice](http://AlmanacNews.com/readers_choice)

RESTAURANTS | FOOD & DRINK | RETAIL | SERVICES | ARTS & ENTERTAINMENT

**VOTE FOR US**



**Menlo Park Barber Shop**

650-391-9008  
 2100 Avy Ave  
 Menlo Park, CA



[www.menloparkbarbershop.com](http://www.menloparkbarbershop.com)

**VOTE FOR US**




**Atherton FINE ART**

700 El Camino Real - Suite #165 | Menlo Park  
 650.324.4278 | [www.athertonfineart.com](http://www.athertonfineart.com)

Your continued trust & support is very much appreciated

**Best Nursery  
 Best Florist  
 Best Gift Shop**



**Ladera Garden and Gifts**

3130 Alpine Road,  
 Portola Valley  
 650.854.3850

2029 Ralston Ave,  
 Belmont  
 650.232.7154

Full Service Nursery and  
 Premiere Home Decor

**BEST AUTO REPAIR**

*For Quality & Performance*




Servicing European, Asian and domestic vehicles with the most qualified and trained ASE certified technicians using factory diagnostic and programming equipment.

Please Vote To Keep Us #1  
 Bay Area's #1 Dealer Alternative




**Portola Valley Garage**  
 Since 1948  
 4170 Alpine Road, Portola Valley 650-851-7442  
[tramies@pvgarage.com](mailto:tramies@pvgarage.com)



Vote for Us! **LuLu's**



Comida Fresca...Salsa Caliente!

- Best Take Out
- Best Casual Dining
- Best Dining with Kids
- Best Mexican Restaurant
- Best Outdoor Dining

**LuLu's on The Alameda**  
 3539 Alameda de las Pulgas  
 Menlo Park  
 650-854-TACO (8226)

[www.lulusmexicanfood.com](http://www.lulusmexicanfood.com)



**Shady Lane**

Please Vote Us Best:  
**Jewelry • Gifts • Boutique**







Jewelry Box by Michael Fisher | Earrings by Holly Yashi | Amethyst Geode Specimen Heart

Open Thurs-Sat: 11 am - 5 pm  
 Appointments encouraged on other days!

[ShadyLaneGallery.com](http://ShadyLaneGallery.com) • 650-321-1099 • [ShadyLaneGifts@gmail.com](mailto:ShadyLaneGifts@gmail.com)

# Local News

MENLO PARK | AHERTON | WOODSIDE | PORTOLA VALLEY



Magali Gauthier

**Sean Simonson**, who has a mobility impairment, rides his off-road handcycle in St. Joseph's Hill Preserve in Los Gatos on April 28.

## In search of smoother ground

Open space district clears its trails of barriers in push to make parks ADA accessible

By Sue Dremann

When Santa Clara County resident Sean Simonson explores trails and open spaces in the Santa Cruz Mountains, he faces accessibility challenges that other bikers and hikers take for granted. Trail impediments might be easy to hop over or maneuver around, but not so on a recumbent tricycle or in a wheelchair, he said.

Simonson, 47, an athlete and

newly retired emergency services manager, became quadriplegic from a mountain biking injury in 2006. The change in his mobility hasn't gotten in the way of enjoying the outdoors, but access to open spaces — even getting through the entrance gate — has proved to be limiting. Most entrances, guarded by stiles or logs to keep vehicles out, aren't wide enough for wheelchairs and other mobility-assisted devices. Trails and roads can be narrow

or too steep, and surfaces can be slippery or snag a chair's wheels.

The Midpeninsula Regional Open Space District, which manages more than 65,000 acres in the greater Santa Cruz Mountains region, is working to change that. Over the past three years, district crews have been widening the stiles and gates at trailheads as part of their first steps in an ambitious 15-year plan to upgrade their

See **ACCESSIBILITY**, page 17

See **ATHERTON**, page 10

## Atherton: More license plate readers OK'd, town to explore all-electric buildings

By Angela Swartz

Deeming the initial rollout of license plate readers in town a success, Atherton officials will purchase additional readers using \$52,250 from an anonymous donor. The plan is to install some along busier intersections, including along El Camino Real.

With the City Council's approval during its April 21 meeting to purchase an additional 10 cameras licensed by the manufacturer for two years of use, the town will soon have a total of 43 automated license plate readers installed.

Automated license plate readers (ALPRs) are mounted on police cars or on fixtures such as road signs and bridges. The town plans to put additional cameras at westbound Stockbridge Avenue at El Camino Real, westbound Alameda de las Pulgas at Stockbridge Avenue and elsewhere. Some 22 of these 43 cameras are privately funded.

Police Chief Steve McCulley has spoken about how police have used the readers in town.

"The Flock ALPR cameras located throughout town have proven to be a very valuable investigative tool and a proactive crime detection tool," according to a Feb. 17 report prepared by McCulley. "Within the first few weeks of operation a burglary suspect vehicle was identified and linked to a major in-town burglary. Several felony arrests have

been made as the result of Flock license plate hits. The arrests include stolen cars and wanted, armed violent fugitives."

Council member Rick DeGolia said he is grateful for the program and noted that Atherton might have the largest deployment of Flock cameras per capita.

The private funding of \$52,250 will support the initial purchase and two years of annual costs, as well as the majority of the installation costs related to each camera, according to an April 21 staff report.

When the initial two-year agreements end for the privately funded cameras, the town can elect to remove them if private financial support is withdrawn. The annual cost to fund all 43 cameras would be \$107,500, according to the April 21 report.

Police first proposed installing cameras in town in response to a rash of 20 residential burglaries over a four-month period between November 2018 and February 2019.

### All-electric building codes

Council members opted, in a 4-1 vote, to take a \$10,000 grant from Peninsula Clean Energy (PCE) to pay for staff and consultant time to explore so-called reach codes to require new buildings in Atherton to be all-electric. In addition to California-mandated building codes, cities and

See **ATHERTON**, page 10

## Local tech companies brace for gradual return to office

Google, SAP, Intuit look to adopt hybrid work models as they welcome back employees

By Lloyd Lee

With California set to end its color-tiered reopening system on June 15 as COVID-19 infections decrease and vaccination supplies increase, some of Silicon Valley's largest tech companies are slowly reopening their campuses.

Google started welcoming back employees to some of its U.S. campuses on a voluntary basis in April, a company spokesperson wrote in an email, though a decision has not yet been made on the reopening time frame for its Bay

Area offices. Facebook plans to reopen its Menlo Park headquarters at 10% capacity starting on Monday, May 10.

SAP, which has a Palo Alto location, opened its offices last month at less than 5% daily capacity for "employees who choose to return to the office for business critical needs," a spokesperson said. Intuit also recently announced its plans to cautiously reopen.

"We intend to be deliberate and data-driven in our approach. ... We don't know all the answers yet," the Mountain View financial software company announced in

a blog post on April 20.

Tech companies were among the first to ask employees to work from home during the COVID-19 outbreak, and now their reopening plans could provide a glimpse as to what office life might look like post-pandemic.

Most local tech companies that have announced reopening plans are welcoming employees back to the office on a voluntary basis for the remainder of 2021, and many indicated that they are looking to adopt a hybrid work model that will maintain some aspects of remote work indefinitely after

the health crisis.

Google said its employees will not be required to return to the office until September, and when they do come back, the company plans to pilot a "flexible hybrid work week model," where teams can work in the office some days and work from home on others, according to the spokesperson.

The work week entails at least three days in the office, according to a New York Times report that cited an email from Sundar Pichai, CEO of Google's parent company, Alphabet, to staff. Capacity of Google offices will

be dependent on various factors, including vaccine availability and lower COVID-19 cases, a spokesperson said.

Similarly, HP expects to implement a hybrid model, "where the role of the office evolves to focus more on collaboration," a spokesperson wrote in an email.

Apple CEO Tim Cook said last September in an interview during The Atlantic Festival that there were "some things that actually work really well virtually" and the company would not "return

See **RETURN TO OFFICE**, page 18

## Your COVID-19 vaccine questions — answered

We've compiled a list of who can currently get vaccinated in San Mateo and Santa Clara counties, plus answers to common questions and links to resources. Access the page at [tinyurl.com/COVIDvaccinequestions](https://tinyurl.com/COVIDvaccinequestions). Have a question? Send it to [editor@pawekly.com](mailto:editor@pawekly.com) and we'll do our best to answer it.

# Marketplace

**Caregivers Home Care**  
408-854-1883  
Motherhealth Licensed  
Hospice, Dementia  
Caring, Compassionate

**express**  
Sign up today at  
[AlmanacNews.com/express](https://AlmanacNews.com/express)

Advertising deadline is Thursday at noon.

To place an ad or get a quote,  
contact Kevin Legarda at 650.223.6597  
or email [digitalads@pawekly.com](mailto:digitalads@pawekly.com).

# Employment

The Almanac offers advertising  
for Employment, as well as  
Home and Business Services.

If you wish to learn more about  
these advertising options,  
please call 650.223.6582 or email  
[digitalads@pawekly.com](mailto:digitalads@pawekly.com).



## TOWN OF PORTOLA VALLEY NOTICE OF PLANNING COMMISSION PUBLIC HEARING

**NOTICE IS HEREBY GIVEN** that the Planning Commission of the Town of Portola Valley will hold a public hearing on **Wednesday, May 19, 2021 at 7:00 p.m. via Zoom**, on the following:

ORDINANCE OF THE TOWN COUNCIL OF THE TOWN OF PORTOLA VALLEY AMENDING SECTION 18.36.040 [ACCESSORY USES] OF CHAPTER 18.36 [USES PERMITTED IN ALL DISTRICTS] OF TITLE 18 [ZONING] OF THE PORTOLA VALLEY MUNICIPAL CODE AND A FINDING THAT THE ACTION IS EXEMPT UNDER THE CALIFORNIA ENVIRONMENTAL QUALITY ACT (CEQA).

The Planning Commission will consider a recommendation to the Town Council regarding amendments to the Portola Valley Municipal Code related to Accessory Dwelling Units (ADUs). Proposed Municipal Code amendments include updates to be consistent with State law:

- State exemption ADUs allowed to exceed floor area and impervious surface, and other allowances
- State mandated ADU size, setbacks and height
- Updates to definitions
- Related updates for compliance

Information pertaining to the proposed ordinance may be viewed by contacting Laura Russell, Planning & Building Director at [lrussell@portolavalley.net](mailto:lrussell@portolavalley.net). The agenda and staff report will be published at <https://www.portolavalley.net/town-government/planning-commission/minutes-and-agendas> in advance of the meeting.

Public Hearings provide the general public and interested parties an opportunity to provide testimony on these items. All interested persons are invited to appear before the Planning Commission to be heard at the time and place mentioned above. If you challenge a proposed action(s) in court, you may be limited to raising only those issues you or someone else raised at a Public Hearing(s) described above, or in written correspondence delivered to the Planning Commission at, or prior to, the Public Hearing(s).

Publication Date: May 7, 2021  
Laura Russell, Planning & Building Director

Established 1965

## The Almanac

Serving Menlo Park,  
Atherton, Portola Valley,  
and Woodside for over 50 years

### NEWSROOM

**Editor**  
Andrea Gemmet (223-6537)

**Assistant Editors**  
Julia Brown (223-6531)  
Heather Zimmerman (223-6515)

**Staff Writers**  
Kate Bradshaw (223-6536)  
Angela Swartz (223-6529)

**Embarcadero Media Staff Writers**  
Sue Dremann (223-6518), Kevin Forestieri  
(223-6535), Lloyd Lee (223-6526),  
Gennady Sheyner (223-6513)

**Contributors**  
Kate Daly, Maggie Mah

**Special Sections Editor**  
Linda Taaffe (223-6511)

**Chief Visual Journalist**  
Magali Gauthier (223-6530)

**Visual Journalism Intern**  
Daniela Beltran

### DESIGN & PRODUCTION

**Design and Production Manager**  
Kristin Brown (223-6562)

**Designers**  
Linda Atilano, Amy Levine,  
Paul Llewellyn, Doug Young

### ADVERTISING

**Vice President Sales and Marketing**  
Tom Zahiralis (223-6570)

**Display Advertising Sales**  
(223-6570)

**Real Estate Manager**  
Neal Fine (223-6583)

**Legal Advertising**  
Alicia Santillan (223-6578)

### ADVERTISING SERVICES

**Advertising Services Manager**  
Kevin Legarda (223-6597)

**Sales & Production Coordinator**  
Diane Martin (223-6584)

The Almanac is published  
every Friday at  
3525 Alameda De Las Pulgas,  
Menlo Park, CA 94025

■ **Newsroom:** (650) 223-6525  
Newsroom Fax: (650) 223-7525

■ **Email news** and photos with captions  
to: [Editor@AlmanacNews.com](mailto:Editor@AlmanacNews.com)

■ **Email letters** to:  
[Letters@AlmanacNews.com](mailto:Letters@AlmanacNews.com)

■ **Advertising:** (650) 854-2626  
Advertising Fax: (650) 223-7570

■ **Classified Advertising:** (650) 854-0858

■ **Submit Obituaries:**  
[AlmanacNews.com/obituaries](https://AlmanacNews.com/obituaries)

The Almanac (ISSN 1097-3095 and USPS 459370) is published every Friday by Embarcadero Media, 3525 Alameda de las Pulgas, Menlo Park, CA 94025-6558. Periodicals Postage Paid at Menlo Park, CA and at additional mailing offices. Adjudicated a newspaper of general circulation for San Mateo County. The Almanac is delivered to homes in Menlo Park, Atherton, Portola Valley and Woodside. POSTMASTER: Send address changes to the Almanac, 3525 Alameda de las Pulgas, Menlo Park, CA 94025-6558. Copyright ©2021 by Embarcadero Media. All rights reserved. Reproduction without permission is strictly prohibited.

The Almanac is qualified by decree of the Superior Court of San Mateo County to publish public notices of a governmental and legal nature, as stated in Decree No. 147530, issued November 9, 1969. Subscriptions are \$60 for one year and \$100 for two years. Go to [AlmanacNews.com/circulation](https://AlmanacNews.com/circulation).

To request delivery, or stop delivery, of The Almanac in zip code 94025, 94027, 94028 and the Woodside portion of 94062, call 854-2626.



### CRIME BRIEF

#### Francis Wolke trial postponed

The trial of Francis Wolke, a 28-year-old from Cincinnati who faces murder charges in the 2018 death of Kathleen Anderson, a Menlo Park resident and longtime Atherton town arborist, has been postponed to Sept. 17 for a trial readiness conference and for the jury trial assignment, according to the San Mateo County District Attorney's Office.

Wolke pleaded not guilty by reason of insanity on Nov. 9, and since then, two court-appointed doctors tasked with evaluating his sanity at the time of the murder returned with split conclusions, according to prosecutors. He remains in custody on \$10 million bail.

—Kate Bradshaw

### COMMUNITY BRIEFS

#### Library celebrates Mental Health Awareness Month

The Menlo Park Library has planned a range of activities throughout May in recognition of Mental Health Awareness Month, including:

■ Monday, May 10, from 6:30 to 7:30 p.m., take a virtual tour of the Museum of Mental Health, the site of the 130-year-old hospital used to film "One Flew Over the Cuckoo's Nest." It is now dedicated to educating and helping people understand mental illness and removing stigma. Go to [is.gd/poMjzs](https://is.gd/poMjzs) for more information.

■ Friday, May 14, from 4 to 5 p.m., Bay Area singer and songwriter Kimberlye Gold shares original and cover pop, rock, R&B and country songs. Go to [is.gd/tU6EdB](https://is.gd/tU6EdB) for more information.

■ Friday, May 28, from 2:30 to 3:30 p.m., Frances Ancheta, a singer, songwriter and musician, performs a show sharing acoustic music and storytelling about her experiences with postpartum depression and surviving breast cancer. Go to [is.gd/O9ObE1](https://is.gd/O9ObE1) for more information.

#### Caltrain to improve safety at two Menlo Park rail crossings

Caltrain is set to begin a project to improve safety near two rail crossings in Menlo Park, at the Glenwood Avenue and Garwood Way intersection and the Oak Grove Avenue and Merrill Street intersection, according to a citywide announcement.

To improve pedestrian safety, the project will add new paint striping and lettering and new pavement markers at the pedestrian crossings. To improve motorist safety and deter drivers from driving around the lowered crossing gates, the project will also install a fixed concrete median with flexible bollards at the intersections.

The project was set to start on May 6 and 7 at the Glenwood Avenue and Garwood Way intersection, after which work was expected to take up to three weeks between the hours of 7 a.m. and 5 p.m. on Mondays through Fridays, according to the city. People can contact Caltrain's construction outreach line at 650-508-7726 with any questions or concerns.

—Kate Bradshaw

#### Talk on Lyme disease

The town of Portola Valley Nature and Science Committee will host a one-hour talk about the rise of the proliferation of ticks and Lyme disease with Dan Salkeld, a research scientist at Colorado State University and scientific advisory board member for Bay Area Lyme Foundation, according to a town of Portola Valley newsletter. The talk starts at 7 p.m. on Tuesday, May 11. Access it at [bit.ly/PVticktalk](https://bit.ly/PVticktalk).

#### Safe Routes to School survey

Officials from the city of Menlo Park's Safe Routes to School program are collecting data on biking and walking safety near public schools this spring. They've released a survey and plan to host community meetings in June before creating audits of walking routes to Menlo Park public schools, as proposed (but not yet funded) by the city's transportation master plan. The survey is open through May 10 at [tinyurl.com/mpsaferoutes](https://tinyurl.com/mpsaferoutes).

See **COMMUNITY BRIEFS**, page 10

# Menlo Park district warns of strangers approaching students en route to school

By Angela Swartz

Over the last two months there have been “three separate and unrelated incidents” involving strangers “behaving suspiciously” toward students on their way to Menlo Park City School District (MPC-SD) schools, according to the district.

One incident was reported on the afternoon of April 5 on the 200 block of Elliott Drive in Menlo Park (near Laurel School’s Upper Campus). A detective had a possible identification of the people who approached a child, “but this did not pan out,” said Menlo Park Police Department spokesperson Nicole Acker in an email. Police took a report of a

“suspicious vehicle” in the area at that time, according to the police log.

“The students did the right thing in getting help from nearby adults, and reporting the incidents once they reached the school office,” said Parke Treadway, the district’s public information officer, in an email. “Menlo Park and Atherton police were notified, and our students were not physically injured.”

The Menlo Park Police Department published a blog post on April 16 noting that “as schools start to reopen, this is a good time to remind students to be aware of their surroundings and of people that ask them to do something that they sense is not right or makes them feel uncomfortable.”

All K-5 hybrid students are now attending classes in person five days a week, according to the district. The Atherton Police Department published a similar post on April 23.

An April 22 district newsletter noted that the district is “fortunate to live in a community of neighbors who are helpful and have our students’ safety and wellness at heart.”

The Menlo Park Police Department has developed new resources to help families and students have conversations about stranger awareness, and build confidence and safety skills in students, according to the newsletter.

“Dangerous and uncomfortable situations can be referred

to instances where children are approached by a person and asked to disobey their parents or do something without permission, asked to keep a secret, or make them feel uneasy in any way,” the police department post states.

The first post talks about the difference between strangers who can help students — like neighbors, teachers, older children nearby, workers at a local business, or police officers — and potentially dangerous strangers. Suspicious situations can include asking a child to get in a car, keep a secret, help find a lost pet, or offering them candy, according to the post.

If approached by a stranger offering them something, a child

should be taught to say “no,” run away, and find a safe adult to report the incident and call for help. The Menlo Park Police Department also encourages parents to remind their children to contact the police whenever they observe or are notified of something they believe to be out of the ordinary. Parents should notify the police as soon as possible.

School officials are using the nonprofit KidPower’s resources to educate students on stranger awareness and how to be safe when confronted with a suspicious situation. ■

Email Staff Writer Angela Swartz at [aswartz@almanacnews.com](mailto:aswartz@almanacnews.com).

## Student project highlights the plight of restaurant workers

By Angela Swartz

Armed with a curiosity about why restaurant workers receive low pay in the United States, Woodland School student Milo Barnes dedicated his yearlong capstone project to exploring this and figuring out how he could help.

Milo, 13, of Redwood City, said he had heard how people in the restaurant industry had to juggle several part-time jobs to make ends meet given the “lack of substantial increase in the minimum wage,” he wrote in his project summary.

The project is part of a program in which eighth graders at the Portola Valley school spend the school year researching a topic of local and global significance, and present their findings to the Woodland community.

Other topics covered by students this school year included animal poaching, gender equity in pay for female athletes and food insecurity, according to the school’s website.

Milo said one of the most startling things he uncovered during his research was the origins of tipping service workers. During the 1850s and ‘60s, wealthy Americans “discovered the tradition (tipping), which originated in medieval times as a master-serf custom,” wishing to seem aristocratic, according to a 2019 Time Magazine article Milo cites.

Many traditionally low-wage industries took this opportunity to legally pay their workers less than a livable wage to increase the business owner’s profits, Milo wrote.

“This practice was even used as legalized racial oppression of the Reconstruction Period, as many former slaves would only be able to work in low class jobs (often tipped) because of their lack of experience and education,” he

said. Freed slaves relied on tips in place of wages, which caused them to struggle to support themselves since people would tip them less because of prejudices, he wrote.

Milo found, via the nonprofit Economic Policy Institute, that if the minimum wage grew with productivity, it would have reached over \$20 per hour in 2019. The federal tipped minimum wage was \$2.13 per hour in 2019, according to the nonprofit. This amount is maintained because restaurants expect that the remainder of wages will be made by tips, “which is oftentimes not true,” Milo wrote.

“As a result, this continually leads to worse conditions for restaurant workers, in particular those who live in more expensive areas such as the Bay Area,” he said. For example, the online RENTCafé rent affordability calculator tool shows that the average San Francisco restaurant worker needs to put 40% of their wages toward rent.

### Pay alternatives

Milo explored ways for restaurant workers to make more livable wages.

One movement he highlighted is the cooperative business model.

Instead of the traditional business model in which profits go to an owner or investors, a cooperative is owned by its workers, and profits are distributed equally between them.

A Slice of New York in Sunnyvale, for example, has a board that’s elected annually by its members, has its own constitution (an operating agreement) and makes decisions on budget, governance and strategy.

“This is their profits, too,” co-owner Kirk Vartan told The Almanac’s sister publication, The Six Fifty. “This is where people

See **RESTAURANTS**, page 10



Milo Barnes



Magali Gauthier

A kitchen manager slides a linguine dish into a to-go container in 2019. A project by a Portola Valley student highlights how restaurant workers in the U.S. are struggling to get by.



## HOUSING ELEMENT COMMUNITY ENGAGEMENT AND OUTREACH COMMITTEE RECRUITMENT

The City of Menlo Park is recruiting residents to be part of the new Housing Element Community Engagement and Outreach Committee (CEOC). The CEOC’s overall purpose is to assist the City in ensuring a broad and inclusive community outreach and engagement process during the Housing Element update over the next 18 months. Apply now for this unique opportunity to serve your community.

### CURRENT VACANCIES

- 10

### To stay connected -

- Subscribe to the Housing Element under “Projects” at [menlopark.org/projectupdates](http://menlopark.org/projectupdates).

Developing leaders within the community

### ELIGIBILITY REQUIREMENTS

- Apply by May 12, 2021
- Menlo Park resident
- Over 18 years of age
- Committed to attending scheduled meetings
- Not currently serving on the City Council, Planning Commission or Housing Commission

### FOR MORE INFORMATION

- Visit [menlopark.org/commissions](http://menlopark.org/commissions)
- Visit [menlopark.org/housingelement](http://menlopark.org/housingelement)
- Call 650-330-6620
- Email [jaherren@menlopark.org](mailto:jaherren@menlopark.org)

# San Mateo County could move to yellow tier next week

By Astrid Casimire/Bay City News Service

Case rates of COVID-19 in San Mateo County are on the decline, testing rates are up and vaccines are available for anyone who lives or works in the county.

Officials on Tuesday said that the county could move into the least restrictive yellow tier of the state's blueprint for a safer economy next week.

Chief of San Mateo County Health Louise Rogers said the case rate reported by the state last Friday and on Monday was

trending downward. State data shows that for the week ending April 24, the county had an adjusted case rate of 1.7 cases per 100,000, a positivity rate of 0.6% overall, and a positivity rate of 1.1% in its most vulnerable communities.

The case rate "was reported as meeting the criteria for the yellow tier, which if it remained that way, would make us eligible to actually move into the yellow tier next Tuesday, May 11," Rogers said. "We will see if that progress continues, but it does look hopeful."

Rogers shared some COVID-19 milestones the county

has achieved, including the one-year anniversary of the Great Plates program, which has provided over 2 million free meals to older adults in the county through partnerships with local restaurants.

And with its increased vaccine supply, the county resumed mass vaccination sites last week.

"There should be no barrier to anyone who lives or works in San Mateo County receiving a vaccine," Rogers said.

Dr. Anand Chabra, San Mateo County Health COVID-19 mass vaccination section chief, said that appointments will show up

on MyTurn.ca.gov three to four days in advance and that work is being done to extend that timeline, add more evening hours and add appointments for weekends.

When the San Mateo County Fair comes to the Event Center the first weeks of June, Chabra said, vaccinations would move to the long-term parking garage at San Francisco International Airport (SFO), which had been used as a mass vaccination site in the past.

As of Monday, 73% of San Mateo County residents had received at least the first dose of the vaccine, including over 90% of county

residents who are 75 and older.

Chabra said that at least 62% of the county's 2,196 homebound individuals had been vaccinated so far.

Vaccinations in San Mateo County will continue this week via local pharmacies, health care providers, local community clinics — in East Palo Alto, North Fair Oaks, Daly City, South San Francisco, San Mateo and Half Moon Bay — and at the county's mass vaccination site at the Event Center.

More information on vaccinations in San Mateo County is online at smchealth.org. ■

## Coronavirus central: Clinics boost vaccination rates

County extends North Fair Oaks vaccine clinic held on Sundays

By Embarcadero Media staff

### County's community clinics increasing vaccination rates

San Mateo County as of Monday had 41,633 cumulative cases of COVID-19, with 567 deaths. There were 19 people hospitalized. Santa Clara County as of Tuesday had 118,541 cumulative COVID-19 cases and 2,070 deaths. There were 64 people hospitalized, 12 of whom were new.

Community clinics have helped boost COVID-19 vaccination rates in hard-hit San Mateo County neighborhoods, but there are still pockets of people the effort has not yet reached.

In the county's most

vulnerable communities, the vaccination rate was 59% as of April 29, while the countywide average is over 70%.

At the Ravenswood Family Health Network, vaccine clinics serve residents of East Palo Alto, where vaccination rates have been the lowest of all cities in San Mateo County. As of April 29, 46% of East Palo Alto residents had received the vaccine.

Ravenswood has administered over 15,000 vaccine doses so far, according to Chief Executive Officer Luisa Buada. There are clinics in East Palo Alto, Mountain View and Sunnyvale.

Buada said the clinics started off with a bang but demand has since dropped. A surge in demand expected after April 15, when the state opened vaccine eligibility to all Californians, did not happen.

"We know that there are a lot more events (and) a lot more vaccine available all throughout the two counties we work in: San Mateo and Santa Clara," Buada said.

Some of the reduced demand could be due to the "chilling effect" of the Johnson & Johnson vaccine pause in April, she said. The Johnson & Johnson vaccinations have since resumed, and Buada reminded people that the chance of severe side effects from the vaccine is extremely low.

Despite the drop in demand, Buada noted that the community clinics have helped increase vaccination rates in vulnerable and low-income communities.

"Things have come up tremendously because of these efforts of all of us but we definitely want to get to that sweet spot of at least 70% vaccinated in all the communities, so we're trying to figure out how we can reach those pockets of people who haven't come out," Buada said.

Buada said Ravenswood has done barrier-free clinics by providing walk-up vaccinations, plus multilingual outreach and materials. They also moved clinics to later hours so that it's easier for working people to access.

The next step will be providing mobile vaccination units that go to specific neighborhoods,

much like an ice-cream truck.

Though vaccination rates in hard-hit communities have not yet caught up to the countywide average, officials say the gap has not changed that much as vaccinations progress.

Closing the gap has its challenges, according to Srija Srinivasan, deputy chief of San Mateo County Health.

"We do expect it to take longer to reach the same level of penetration in our lowest-resource communities," Srinivasan said. "Some of our residents have much less flexibility with work schedules, caregiving responsibilities (and) transportation barriers and we just know that we need to be able to provide predictable, easy to access, easy to plan for pathways."

The county's increased vaccine supply will make it easier to host consistent vaccination sites. Plus, Srinivasan said the county continues to invest in local, targeted approaches to vaccination.

These investments involve working with community organizations and developing partnerships to operate clinics.

On April 30, the county announced a partnership with Dignity Health, Sequoia Healthcare District and the city of Redwood City to continue a weekly vaccination clinic in North Fair Oaks, one of the communities that has been hard hit by COVID-19.

And at the Ravenswood Family Health Network, Facebook grants have funded free transportation to and from vaccine clinics, and some groups have provided meals to clinic volunteers. The city of East Palo Alto and community organizations like Belle Haven Action and Nuestra Casa also contribute to vaccination efforts.

See CORONAVIRUS, page 10



**Menlo Park Monthly Market Report**  
April 1, 2021 - April 30, 2021

**11 COSTLY HOME INSPECTIONS PITFALLS**  
Free Report reveals what you need to know before you list your home for sale.  
[www.Rossetti11CostlyPitfalls.com](http://www.Rossetti11CostlyPitfalls.com)

TOP 10 SALES*	
1. \$8,750,000 1275 Santa Cruz Avenue	2. \$7,280,000 308 Arbor Road
3. \$5,850,000 240 Princeton Road	4. \$5,555,000 320 Lennox Avenue
5. \$5,100,100 1880 Oakdell Drive	6. \$5,100,000 1068 College Avenue
7. \$5,000,000 2150 Sharon Road	8. \$4,365,000 1664 Oak Avenue
9. \$4,350,000 2140 Mills Avenue	10. \$4,171,000 984 Monte Rosa Drive

**ACTIVE LISTING**

Apr: 68  
Mar: 73  
↓ -7%

**AVERAGE SALES PRICE**

Apr: \$3,058,242  
Mar: \$2,734,235  
↑ 12%

**AVERAGE SALES PRICE/SQ FT**

Apr: \$1,349  
Mar: \$1,301  
↑ 4%

**PENDING LISTING**

Apr: 70  
Mar: 52  
↑ 35%

**AVERAGE SOLD DAYS ON MARKET**

Apr: 17  
Mar: 21  
↓ -19%

**MONTHS OF INVENTORY**

Apr: 1.40  
Mar: 1.60  
↓ -13%

If no further homes/condos were to come to market, the time would be SOLD OUT of residential real estate in the number of MONTHS shown

**SOLD LISTING**

Apr: 49  
Mar: 46  
↑ 7%

**SALE/LIST PRICE**

Apr: 104.00%  
Mar: 102.80%  
↑ 1%

**30 YEAR MORTGAGE RATE**

Apr: 3.20%  
Mar: 3.33%  
↓ -4%

3/31/2021 3.23% 4/28/2021 3.20%  
Source: Bankrate

▲ April 2021 compared March 2021

\*Source: NLS (Listings for Single Family Properties | Townhomes | Condos)

**Making A Move?**

Sellers Start Here: [RossettiMarketValue.com](http://RossettiMarketValue.com)

Buyers Start here: [RossettiHomeFinder.com](http://RossettiHomeFinder.com)

3525 Alameda De Las Pulgas Suite C Menlo Park, CA Phone: 650-854-4100



**Gail Antoinette Rossetti**  
Founder | CEO | Broker  
License #01179344



Join Us for  **PENINSULA RESTAURANT WEEK**  **MAY 14 - 22**

Embarcadero Media's the *Peninsula Foodist* and Facebook have come together to **celebrate our local restaurants and give back to the community**. As a local business ourselves, we at Embarcadero Media understand the hardships restaurants have faced during the pandemic and we wanted to find a way to connect our communities with local restaurants who need our support.

**ONE WEEK ONLY!** Select from special prix fixe menus at your local favorites or try something new during the first ever Peninsula Restaurant Week!

**WIN PRIZES!** Diners are encouraged to share their favorite meals from Peninsula Restaurant Week on Instagram, Twitter and/or Facebook using #PenRestaurantWeek for a chance to win gift cards to local restaurants. See complete terms and conditions.

**Take-out, delivery and dine-in options available.**

[Learn more at PeninsulaRestaurantWeek.com](http://PeninsulaRestaurantWeek.com)

 **SPONSORS** 

**FACEBOOK**

Supporting local restaurants through Community Market Giving.  
Learn more at [CommunityMarketGiving.com/support-local-restaurants](http://CommunityMarketGiving.com/support-local-restaurants)



**ATHERTON***continued from page 5*

counties may also adopt more advanced, or enhanced, building codes, known as reach codes, according to PCE's website. Towns across the Peninsula have adopted such codes, including Menlo Park and East Palo Alto. Woodside officials declined to consider them, according to a report from the clean energy agency.

Portola Valley is "very close" to moving forward with its codes, with a first reading coming soon, Rafael Reyes, the agency's director of energy programs, said during the meeting.

Reyes discussed how electrically powered homes are safer and healthier, according to the presentation. Gas stoves increase children's asthma risk by 42%, the report states. Total electric living eliminates the risk of carbon monoxide poisoning, and induction ranges automatically turn off when not in use, eliminating

a leading cause of house fires, according to the report.

Council member Diana Hawkins-Manuelian said she supports pursuing a move to all-electric building.

"I think with the new houses going in now, or putting in hardware that's going to be in place going into the future, it's our duty to try to fix some of the problems we have (with gas power)," she said. "If I look at the community of Atherton, I think there's only one thing that I think the ladies will have a hard time giving up their Wolf and Viking stoves. And I've not been able to find any induction stoves that are being promoted very much in the U.S., so that's something that has to be fixed. ... I do think that our community would go with it; we have a high number of electric cars already so I'm in favor of this."

Vice Mayor Mike Lempres was the only council member to vote against exploring the code change, noting "it makes me uncomfortable for us to be mandating things

for people to do."

Peninsula Clean Energy's consulting team will work with town staff to devise an approach that fits for Atherton, Reyes said. The agency can offer model reach codes and consultants who can offer guidance.

**Menlo College to break ground on new dorm, host in-person graduation**

Menlo College officials will break ground on a new 288-bed residence at the campus on May 13, Angela Schmiede, vice president for student success and chair of the pandemic planning team at Menlo College, told the council during the meeting. This will be the first time new housing is offered on campus in more than 30 years, she said.

Schmiede said the new three-story housing project will expand affordable housing for students and reduce traffic congestion to and from campus.

Last summer the council gave

the green light last to the project, which the school aims to complete by April 2022.

Menlo College, which is reopening for in-person classes in the fall, will host its 93rd commencement in person for both the classes of 2020 and 2021, since last year's graduates did not have a ceremony due the pandemic.

Maya Soetoro-Ng, former President Barack Obama's sister and co-founder of Ceeds of Peace, which creates peace-building action plan workshops for educators, families, and community leaders, will speak at the ceremony. Schmiede described Soetoro-Ng as a "really delightful person."

Each graduate will be able to bring two guests, and families will sit in distanced pods on the quad, Schmiede said. Typical post-ceremony gatherings have been canceled. Graduates will be required to verify a negative COVID-19 test before the ceremony.

The school plans to enroll about 850 students this fall, said President Steve Weiner.

**Civic center project**

The town's long-awaited new \$31.6 million civic center, which includes police and administration facilities, building and planning offices and a library, is on track to finish on time, City Manager George Rodericks told the council.

A soft opening is planned for July, and the library should be ready in August, he said. A grand opening is slated for October.

Last week, construction workers planned to continue demolition of roadway, curb and gutters on Station Lane and begin to install lower roof clay tile for City Hall and the police department building, according to a staff report. They also planned to continue work on electrical and mechanical systems for the new library, City Hall and police department. ■

*Email Staff Writer Angela Swartz at [aswartz@almanacnews.com](mailto:aswartz@almanacnews.com).*

**CORONAVIRUS***continued from page 8*

With the increased vaccine supply received last week, San Mateo County also reopened its mass vaccination sites.

The county received over 24,000 doses last week, a welcome change from previous weeks, when the county struggled with a low and unpredictable vaccine supply.

As of Sunday, 73% of San Mateo County residents had received at least the first dose of the vaccine.

For San Mateo County vaccination information, visit [smchealth.org/covid-19-vaccination-program-overview](http://smchealth.org/covid-19-vaccination-program-overview).

**County extends North Fair Oaks vaccine clinic**

A weekly COVID-19 vaccine clinic will continue running on

Sundays in North Fair Oaks and offer more predictable hours, the county of San Mateo said in a statement.

The North Fair Oaks clinic is held on Sundays between 11 a.m. and 5 p.m. at Fair Oaks Health Center, 2710 Middlefield Road, Redwood City.

The partnership brings vaccine accessibility to one of the county's hardest-hit neighborhoods. The vaccine site at Fair Oaks Health Center serves a community with significant rates of COVID-19 infections and residents who have been harder to reach or who have difficulty reaching mass vaccination sites.

The North Fair Oaks clinic will now have a more predictable schedule with drive-thru and walk-up registration without an appointment, the county said in the statement. North Fair Oaks is an

unincorporated neighborhood of approximately 15,000 residents located between Redwood City, Menlo Park and Atherton. The extended weekly clinics are possible through a new partnership between the county of San Mateo, Dignity Health, Sequoia Healthcare District and the city of Redwood City.

"From the beginning, we've said that our comeback depends on all of us, and that also means it depends on all of us working together to meet residents where they are at. This pandemic has highlighted that we are responsible not only for our own health but those around us, and our vaccination efforts are no different. Every shot in an arm is a success for our county," county Supervisor Warren Slocum, whose district includes North Fair Oaks, said in the statement.

Dignity Health and the city of Redwood City will run the site and Sequoia Healthcare District will provide funding. The county will continue helping with outreach in English and Spanish, including door-to-door canvassing.

"We're thrilled to partner with Redwood City, San Mateo County and the Sequoia Healthcare District to help vaccinate some of our community's most vulnerable residents — many of whom have difficulty accessing high-volume vaccination sites due to work schedules and access to transportation, or they lack the technology to book appointments online. We believe these vaccine clinics will eliminate those barriers and allow us to protect the lives of many more of our neighbors," Bill Graham, president of Dignity Health Sequoia Hospital, said in the statement.

The clinic doesn't require prescheduled appointments, but the state of California's MyTurn online scheduling system offers options for scheduling appointments for vaccine clinics throughout the county.

**Comprehensive COVID-19 coverage**

View interactive charts tracking the spread of the coronavirus in San Mateo and Santa Clara counties online at [paloaltoonline.atavist.com/tracking-the-coronavirus](http://paloaltoonline.atavist.com/tracking-the-coronavirus). Find a comprehensive collection of coverage on the Midpeninsula's response to the new coronavirus by The Almanac and its sister publications, Palo Alto Online, and the Mountain View Voice, at [tinyurl.com/c19-Almanac](http://tinyurl.com/c19-Almanac). ■ *CalMatters and Bay City News Service contributed to this report.*

**RESTAURANTS***continued from page 7*

are taking time to think about the long term and that's where I see people really understanding the weight of ownership. It's not about today. It's not about what you get. It's how do you sustain and what does it take to sustain?"

Milo also researched mandatory service charges, sometimes called a quality of life tax. A former restaurant owner told the Washington Post in 2019 that a mandatory 18% service charge improved the "food, the service, the pay, the customer satisfaction" at his business.

Increasing minimum wage and abolishing tipped wages could

decrease poverty among restaurant workers, Milo found. Instead of employers being forced to lay off workers to save money, experts have said that an increase in the minimum wage is predicted to increase employment, according to the Economic Policy Institute report.

A restaurant owner Milo interviewed said she combines her employees' tips and distributes them equally among them, which helps establish more pay equity. This started during the COVID-19 pandemic when her workers had to become more flexible to accommodate online orders, often having to work many different jobs within the restaurant. Her workers received less money

in tips because fewer people were eating out. Pooling tips could help increase pay for chefs who, unlike waiters, don't normally interact with customers, the owner said.

Milo posted flyers in Redwood City and Ladera, which directed people to a website with information on how others can help restaurant workers make living wages. He includes links to local organizations that advocate for restaurant workers, including the Cal Restaurant Association and the Restaurant Relief Fund.

For more on the project, go to [supportworkers.wixsite.com/raisethewage](http://supportworkers.wixsite.com/raisethewage). ■

*Email Staff Writer Angela Swartz at [aswartz@almanacnews.com](mailto:aswartz@almanacnews.com).*

**COMMUNITY BRIEFS***continued from page 6***Menlo School newspaper takes home award**

Menlo School's student newspaper won fourth place in the best website category for a school of 1,500 students or fewer in the National Scholastic Press Association's Best of Show competition, according to the organization's website.

The association honored student journalists and their organizations during its Spring National High School Journalism Convention, produced virtually March through May. Students registered for the

convention were eligible to enter their work.

Go to [studentpress.org/nsps/spring-2021-best-of-show](http://studentpress.org/nsps/spring-2021-best-of-show) for the full list of winners.

—Angela Swartz

**OBITUARIES**

Local residents who died recently include **Philip Martin Humphreys**, 78, a Portola Valley resident of nearly five decades, on April 14.

To read full obituaries, leave remembrances and post photos, go to Lasting Memories at [almanacnews.com/obituaries](http://almanacnews.com/obituaries).

join us online | may 10 - 15

# health MATTERS

**your free virtual community health event**

Join Stanford Medicine's health-care experts as they share the latest medical discoveries, provide wellness tips and demos, and address health topics like genome sequencing, the microbiome, Asian health, diabetes, and health policy. Plus a Saturday session for high school students interested in a career in medicine.

**Register Today | [healthmatters.stanford.edu](https://healthmatters.stanford.edu)**



Share on social for a chance to win prizes!  
**#healthmatters2021**

JOIN US FOR:

## Healthy Hearing, Healthy Brain Community Webinar

Did you know that hearing health is related to brain health? During this **free webinar**, Dr. Michelle Inserra will discuss:

- **New Research:** Learn about what researchers are discovering about the link between cognitive health and hearing
- **Advanced Technology:** See how new technologies like our novel contact hearing solution can deliver more complete sound
- **Complimentary Sound Demo:** Receive an optional complimentary consultation and sound demonstration following the webinar

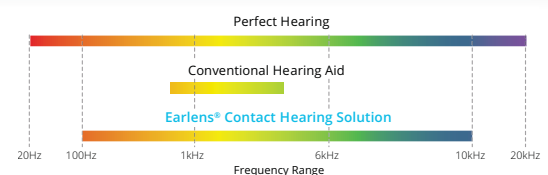


**Michelle Inserra, MD** is an otologist with the Earlens Hearing Center. She holds a medical degree from Stanford University and completed a fellowship in Neurotology at the California Ear Institute.

### Upcoming webinar:

**Healthy Hearing, Healthy Brain**  
May 12, 10:00 a.m. PST

Learn more and register at [earlensevents.com/PAW/brain](https://earlensevents.com/PAW/brain), or by calling (650) 417-9856.



Earlens® was recently named a top 100 Invention for 2020 by TIME Magazine and is a 2021 Best of Menlo Park Award Winner



## OUTDOOR ED

continued from page 1

interested families and pods to match them with outdoor educators committed to complying with the family's concerns, even selecting educators based on their living conditions, such as having just one low-risk housemate. Staff members for private cohorts often work with only one group, and up to three cohorts if they all agree. These staffers don't mix with the other program instructors, and there are precautions: taking temperatures, washing hands, avoiding shared foods and wearing masks.

Looking to the future, McKinney said she expects that many families will return to school, though some will still want to participate in her outdoor learning programs after school.

Other families have expressed a commitment to the private pod model next school year, she said.

"I think there's still an interest in people wanting to be safe for one more year, and limit the exposure their children have to people," she said.

And a couple of families have turned to the Peninsula Beach and Forest School to provide all of their students' schooling, she said.

Many of the families she's worked with have attended

traditional rather than home school. To transition to home school but also to having school fully outdoors has been a new concept for many parents, McKinney said.

The pandemic has exposed a whole new group of parents to the concept of "forest school" who might otherwise have thought it was a radical idea, she added.

"I'm hoping that this is an anchor in people's lives, that they have this moment in time to build a connection to nature that's not going away," she said. "I'm really hoping that this is the beginning of a beautiful nature connection and relationship for kids and families."

### Investment in outdoor classrooms

For Andra Yeghoian of the San Mateo County Office of Education, the pandemic has created new interest from local school districts to expand facilities to provide outdoor learning spaces. And that interest has snowballed into a broader openness to environmental literacy programs.

Yeghoian is the office's environmental literacy and sustainability coordinator and has been leading an initiative to provide technical support to public and private schools in San Mateo

County, helping them figure out how to do more teaching outside during the pandemic.

Whether that meant taking math and English classes outside or developing specific curriculum related to the outdoors, roughly half of the school districts in the county reached out for technical assistance in the past year.

One of the biggest obstacles schools faced was in their physical outdoor layouts, she said. "A lot of schools needed to look at their infrastructure."

In some cases, schools already had plenty of picnic tables, benches or other outdoor seating, and it was a matter of moving or clustering them differently to facilitate outdoor learning. Others had to invest in seating, shade structures or outdoor Wi-Fi hubs.

"Many saw that as a long-term investment to use in the short term," Yeghoian said.

Her team provided training to staff and faculty members on how to feel comfortable teaching outdoors, thinking through which class activities work better outdoors, or how weather might impact those activities and how to plan for them.

Circle time lends itself to taking place outside, while math classes might need to be rethought. For early learners, she suggested, instead of using building blocks in a classroom to teach about shapes and numbers, how about using rocks or pieces of bark to teach the same lesson outside?

The vast majority of the technical support provided to districts was before the vaccine, and many teachers were saying that they wanted to teach outdoors because of the lower transmission rates, she explained.

"I think another outcome has been helping more teachers feel safe and comfortable returning to teach in person," she said.

The office also worked with private schools, some of which opted to have their students spend most of their school days outside.

"Regardless of COVID-19, having kids spend part of their time outdoors every day should be part of their regular education process," she said. "Learning and playing in the outdoors is a resiliency strategy that works no matter what the circumstances are."

Research indicates that being in an outdoor environment can also help reduce the amount of trauma that kids feel in the moment, and will likely provide a valuable tool for social-emotional learning as kids transition back into school, she said.

In the long term, Yeghoian added, it's likely there are going to be more disruptions to learning due to climate change, and



Daniela Beltran B.

**Students** at the Peninsula Forest and Beach School get ready for a hike at Twin Pines Park in Belmont on May 4.

figuring out how to use outdoor spaces to benefit students and reduce each school's environmental footprint will be helpful.

"You have to make the investment at some point," she said.

### For nonprofits, virtual options expanded, but finances didn't

For other more traditional providers of outdoor and environmental learning, the pandemic has proven more disruptive.

The CuriOdyssey Science and Wildlife Center at Coyote Point in San Mateo has had to significantly retool its approach to stay alive.

According to Carl Oosterman, director of education at CuriOdyssey, the nonprofit closed to the public when the pandemic started, and it was thanks to federal Paycheck Protection Program loans that the organization was able to "come out of the pandemic and not have to shutter completely."

With the facility shut to visitors, leaders at CuriOdyssey quickly pivoted to offering virtual education programs. The shift to online lessons enabled staff to provide lessons more conveniently than it would have pre-pandemic, but it has resulted in a decline in revenues. Previously, fees from field trips had been a key revenue stream for the organization, Oosterman said, adding that it's not likely that field trips are going to come back soon, since traveling by school bus is still a risk that makes many educators and parents wary.

They're also anticipating that some local schools may be facing budget cuts and may not have funds for field trips next year, he said.

Not being able to hold summer camps last year also hurt. By the fall, CuriOdyssey was able to set up an outdoor learning space, offering an early learning program for parents and young children, an after school program and a program for home-schooled students, he said.

Before the pandemic, most of those programs would have

taken place in an indoor classroom, Oosterman said, but the kids seemed to enjoy playing with the tactile surroundings of leaves, rocks and sticks, while enjoying the distractions — which became learning opportunities — when wildlife would run, slither or fly through the outdoor "classroom."

"A lot of natural learning opportunities ... occurred by having our programs done outside," he said.

As for what's next, the organization is looking to continue with its virtual programming offerings and go back to providing in-person opportunities safely — while focusing on tackling the learning gap that has emerged between students who have had the technological tools to engage with online learning and those who have not.

One added perk of virtual programs is that CuriOdyssey was able to include participants from far beyond the region, with people attending events from New York, Los Angeles, Washington and Sacramento, he said.

"We were popular when the pandemic hit. If we have any headwind, it is people's fear or apprehension of going back to an institution where people are touching exhibits and it may be crowded," he said.

The pandemic has laid bare the gap between those who have the resources to bring their kids to an after school program, sign them up for a virtual class and have the Wi-Fi and technological equipment to connect, and those who don't, he said.

"What we are going to be focused on as part of that building process is (that) we want to make sure that science is accessible to everyone ... We're keenly aware of that learning loss and that gap, and as an organization, we want to make sure that we're leading and providing opportunities for those marginalized communities," he said. ▀

Email Staff Writer Kate Bradshaw at [kbradshaw@almanacnews.com](mailto:kbradshaw@almanacnews.com).

## Philip Martin Humphreys

November 24, 1942 – April 14, 2021

Phil Humphreys passed peacefully in his sleep after a long battle with heart disease. Phil was born in Oregon, and upon graduating from Medford High, was recruited by all the west coast schools as well as some in the mid west, to play football. He was an incredible player, and was one of the fastest graduates in 1960. Luckily for his wife Sharon, he chose Stanford. They met and married in 1964, just after Sharon graduated from Woodside High. Phil had a wonderful career in the computer field, working at many companies in the bay area. They settled in Portola Valley in 1973, raising 2 wonderful daughters. Phil was very active in the community, serving on several committees. He retired in 2012 and he and Sharon traveled extensively. He is survived by his wife of 57 years, Sharon, daughters Robyn and husband Dan, Lisa and husband Steve, and 4 grandchildren, Phil, Alex, Stephanie and Grant.



A celebration of life will be held July 10th at 1pm in Portola Valley, site to be announced later.

Memorial donations may be made to Stanford Football.

PAID OBITUARY



**464 Selby Lane**  
**Atherton**

**Gorgeous updated home**  
**in the heart of Atherton**

**4 Bedrooms | 3 Bathrooms | Guest Cottage | 0.74 Acre Lot**

This gracious, wonderfully rebuilt home in premier Atherton features wide-plank wood floors, high ceilings, office with built-in storage, and living room sized for grand piano. Elegant bedrooms are spacious and include private primary suite. The ideally located kitchen overlooks separate family room and backyard, and all rooms have large windows offering expansive wooded views.

Vast gated grounds showcase a putting green and swimming pool and a shaded loggia for restful afternoons. Includes full-size cottage

Come home to this quiet, exclusive paradise within minutes of Downtown Menlo Park, top private and public schools, and freeways. Multi-zoned central air conditioning and heating in both home and cottage.

**Offered At: \$8,800,000**

Get exclusive access to the MLS data-base.  
SCAN CODE to DOWNLOAD MY MOBILE APP.



[mls-client.com/D56C8C07](https://mls-client.com/D56C8C07)



**Terri Couture**  
**650.917.5811**

**COLDWELL BANKER**  
**161 S. SAN ANTONIO RD., LOS ALTOS, CA 94022**

The property information herein is derived from various sources that may include, but not be limited to, county records and the Multiple Listing Service, and it may include approximations. Although the information is believed to be accurate, it is not warranted and you should not rely upon it without personal verification. Real estate agents affiliated with Coldwell Banker Residential Brokerage are independent contractor sales associates, not employees. © 2019 Coldwell Banker Residential Brokerage. All Rights Reserved. Coldwell Banker Residential Brokerage fully supports the principles of the Fair Housing Act and the Equal Opportunity Act. Owned by a subsidiary of NRT LLC. Coldwell Banker and the Coldwell Banker Logo are registered service marks owned by Coldwell Banker Real Estate LLC.

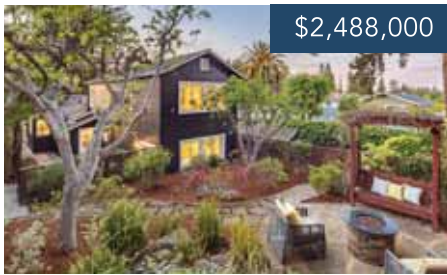


**GLOBAL LUXURY**



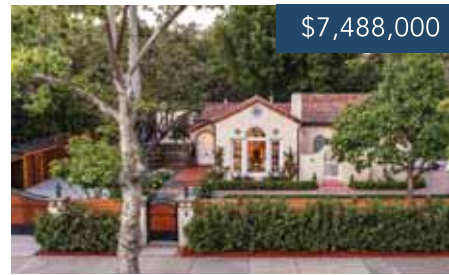
# COMMITTED TO TRANSPARENCY

2.5% Commission Paid to Buyer's Agent • Waived if DeLeon Buyer's Agent



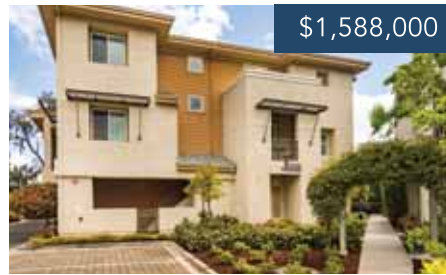
\$2,488,000

2151 Oakley Ave, Menlo Park  
5 Bd | 4 Bth  
[www.2151Oakley.com](http://www.2151Oakley.com)



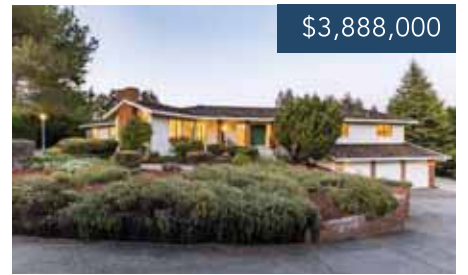
\$7,488,000

1535 Cowper Street, Palo Alto  
6 Bd | 4 Bth  
[www.1535Cowper.com](http://www.1535Cowper.com)



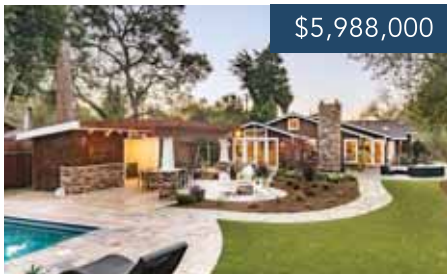
\$1,588,000

1138 Stanislaus Lane, Palo Alto  
3 Bd | 3 Bth  
[www.1138Stanislaus.com](http://www.1138Stanislaus.com)



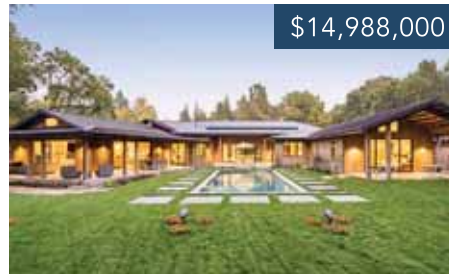
\$3,888,000

23195 Eastbrook Ave, Los Altos  
5 Bd | 3 Bth  
[www.23195Eastbrook.com](http://www.23195Eastbrook.com)



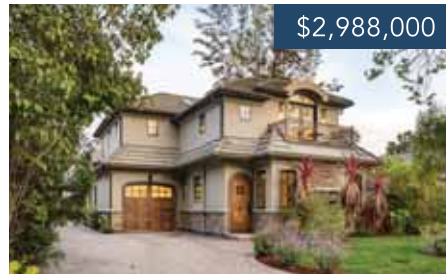
\$5,988,000

1780 Morton Avenue, Los Altos  
4 Bd | 6 Bth (4 Full, 2 Half)  
[www.1780Morton.com](http://www.1780Morton.com)



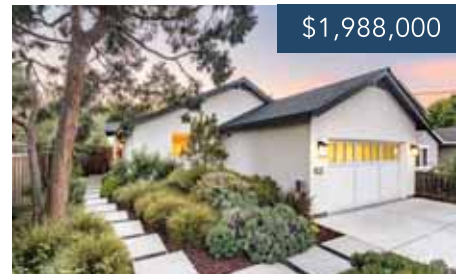
\$14,988,000

199 Mapache Dr, Portola Valley  
5 Bd | 6.5 Bth  
[www.199Mapache.com](http://www.199Mapache.com)



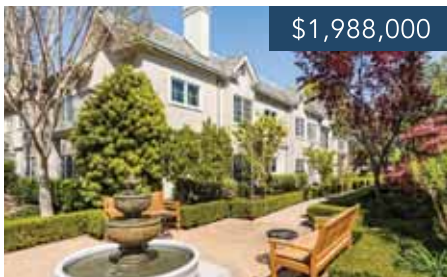
\$2,988,000

140 Tennyson Ave, Palo Alto  
4 Bd | 3.5 Bth  
[www.140Tennyson.com](http://www.140Tennyson.com)



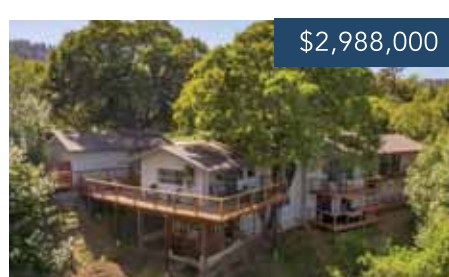
\$1,988,000

2045 Menalto Ave, Menlo Park  
3 Bd | 2 Bth  
[www.2045Menalto.com](http://www.2045Menalto.com)



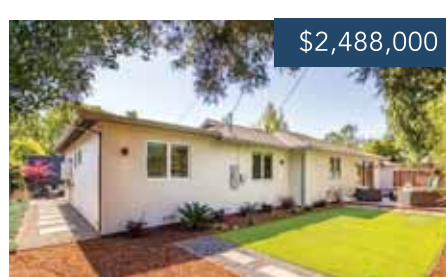
\$1,988,000

1 W. Edith Ave. #C116, Los Altos  
3 Bd | 2 Bth ( for residents aged 55+)  
[www.1WEdithC116.com](http://www.1WEdithC116.com)



\$2,988,000

255 Old Spanish Trail, Portola Valley  
4 Bd | 3.5 Bth  
[www.255OldSpanishTrail.com](http://www.255OldSpanishTrail.com)



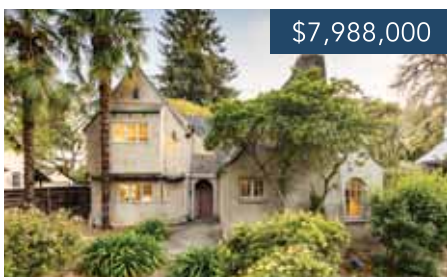
\$2,488,000

923 Oregon Ave, Palo Alto  
4 Bd | 2 Bth  
[www.923Oregon.com](http://www.923Oregon.com)



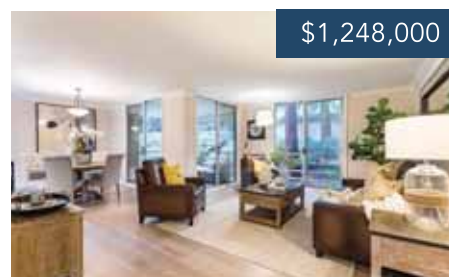
\$4,988,000

307 Walsh Road, Atherton  
5 Bd | 4.5 Bth  
[www.307WalshRd.com](http://www.307WalshRd.com)



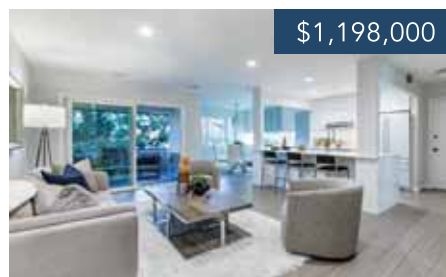
\$7,988,000

1550 Cowper Street, Palo Alto  
9 Bd | 7 Bth  
[www.1550Cowper.com](http://www.1550Cowper.com)



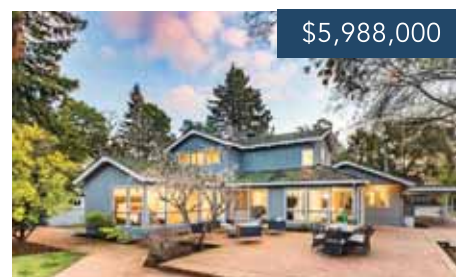
\$1,248,000

1100 Sharon Park Dr #9, Menlo Park  
2 Bd | 2 Bth  
[www.1100SharonParkDr.com](http://www.1100SharonParkDr.com)



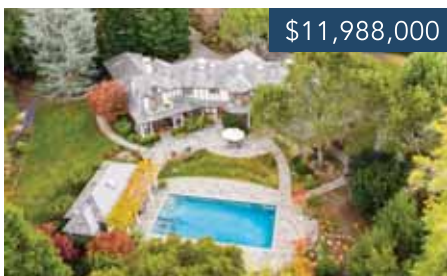
\$1,198,000

461 Burgess Dr #8, Menlo Park  
2 Bd | 2 Bth  
[www.461Burgess.com](http://www.461Burgess.com)



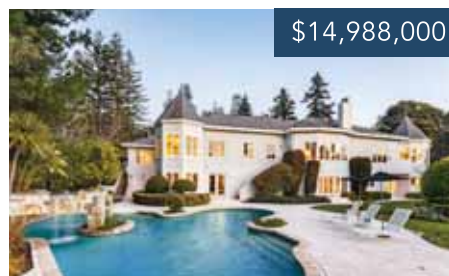
\$5,988,000

1170 May Brown Ave., Menlo Park  
3 Bd | 3 Bth  
[www.1170MayBrown.com](http://www.1170MayBrown.com)



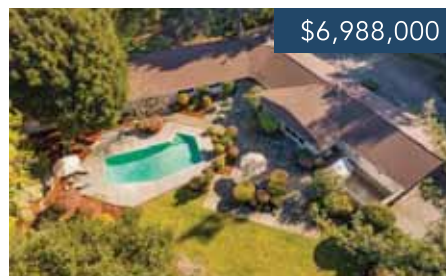
\$11,988,000

3787 Woodside Rd, Woodside  
6 Bd | 5.5 Bth  
[www.3787Woodside.com](http://www.3787Woodside.com)



\$14,988,000

97 Ridge View Drive, Atherton  
6 Bd | 7.5 Bth  
[www.97RidgeViewDr.com](http://www.97RidgeViewDr.com)



\$6,988,000

35 Edge Road, Atherton  
6 Bd | 4 Bth  
[www.35Edge.com](http://www.35Edge.com)



\$39,998,000

27500 La Vida Real, Los Altos Hills  
5 Bd | 12 Bth (7 full, 5 half)  
[www.27500LaVida.com](http://www.27500LaVida.com)

Michael Repka | 650.900.7000 | DRE #01854880  
[michael@deleonrealty.com](mailto:michael@deleonrealty.com) | [www.deleonrealty.com](http://www.deleonrealty.com) | DRE #01903224



## 140 TENNYSON AVENUE, PALO ALTO



### Contemporary Luxury in Old Palo Alto

Moments to the excitement of University Avenue, convenient to prestigious Stanford University, and offering easy access to eco-friendly public transportation – this fresh, modern home exemplifies the vibrancy of its setting in sought-after Old Palo Alto. Outstanding build quality is readily apparent on both levels of this 8-year-old property, which offers 4 bedrooms, 3.5 bathrooms, and over 2,000 square feet of living space. Stylish appointments including hardwood floors, marble finishes, and detailed ceilings create a sophisticated ambiance throughout the floorplan perfectly suited for a contemporary lifestyle. Entertain guests with ease in the expansive living room with a centerpiece fireplace, craft delicious meals in the chef's kitchen with GE Profile and Thermador appliances, and enjoy indoor/outdoor living in the family room that opens to the private backyard patio. Enjoy your morning coffee on the master suite's outdoor balcony, and appreciate the convenience of a main-level guest suite. Plus, top-ranked schools Walter Hays Elementary, Greene Middle, and Palo Alto High are within one mile of the home.

For more information, video tour & more photos, please visit:

[www.140Tennyson.com](http://www.140Tennyson.com)

Offered at \$2,988,000

Easy and safe access for potential buyers and Realtors®

Listed by Michael Repka of the DeLeon Team, the #1 Team in Palo Alto

Data from BrokerMetrics® based on MLS sales from January 1, 2020, to December 31, 2020, in Palo Alto, residential properties, with no off-MLS sales included in the rankings.

2.5% Commission Paid to Buyer's Agent • Waived if DeLeon Buyer's Agent

Michael Repka, DRE #01854880 | 650.900.7000 | michael@deleonrealty.com

中文諮詢請聯繫 Audrey Sun, DRE #01933274 電話: 650.785.5822 | www.deleonrealty.com | DeLeon Realty, Inc. | DRE #01903224

# High school sports roundup

## Sequoia district will not take part in CCS playoffs

The Sequoia Union High School District has made the decision to not take part in the Central Coast Section playoffs. The decision applies to all sports at Menlo-Atherton, Woodside, Sequoia and Carlmont high schools.

"The decision was made at the administrative level, but the (athletic directors) were all in support," Menlo-Atherton co-athletic director Steven Kryger said. "For myriad reasons. With the playoffs going on into June after graduation, there's just a lot going on."

The Peninsula Athletic League had earlier decided to allow traditional spring sports to take part in CCS, to make up for last year when all those sports had their seasons curtailed by the onset of the COVID-19 crisis.

"When we returned to play we decided no standings, no records, no league championships and no playoffs," Kryger said. "At the time we didn't think CCS would have one. We wanted kids to play for the love of the game, just to win today, enjoy what we have, get back to a sense

of normalcy, vaccinated, and get ready for next fall."

The Santa Clara Valley Athletic League's Board of Managers voted last week to not take part in the CCS playoffs. That decision set off a firestorm of emails protesting the decision.

Contacted Monday morning, SCVAL commissioner Brad Metheany was asked for his reaction to the 30 or 40-odd emails he had received on the matter.

"They're entitled to speak their minds. I've read every (email) and I listen," Metheany said. "There's a lot of emotion on this. I understand where they are coming from."

Given the outpouring of sentiment, would the board reconsider?

"As of now, no," Metheany said. "My board is my board. This went from an ad hoc committee of athletic directors to the principals. It was tabled three times and we had public input three times."

## Talks of football merger gaining momentum

The on-again, off-again talks to merge the two largely public high school athletic leagues on the Peninsula for football appear to be gaining traction.

Under the proposal, the 14-team Santa Clara Valley Athletic League and the 18-team Peninsula Athletic League would merge to form a 32-team, four-division league for football. A number of hurdles need to be cleared before the merger could take place, and no sooner than fall of the 2022-2023 school year.

"We're definitely open to it," Metheany said. "It makes sense. It would really help out teams that are struggling to keep their programs alive. It would help both leagues. All said and done it would save programs."

SCVAL football coaches voted 14-0 in favor of the realignment.

The four divisions would include one "A" league with the top eight teams, two middle-level "B" leagues and one lower-tier "C" league, that would include programs that have struggled the most in recent years, such as Mills (which was unable to field a team this spring) and South San Francisco from the PAL, Monta Vista and Lynbrook from the SCVAL.

The top division would include most of the top public school football programs in the Central Coast Section, such as three-time defending PAL Bay Division champion Menlo-Atherton along

with traditional SCVAL De Anza Division heavyweights Los Gatos, Wilcox, Milpitas and Palo Alto.

"It would be a killer league," Palo Alto coach Nelson Gifford said. "I don't think you'd find many leagues tougher than that. It would be good for football in the Bay Area."

The SCVAL has advocated for this merger for several years, but initially encountered resistance from the PAL, a sentiment that appears to be changing.

"PAL coaches shrugged their shoulders and said it seemed like it was the SCVAL's problem," said longtime Aragon coach Steve Sell. "I disagreed, I thought we should be more global. At the time our (three six-team divisions) were working right. The last couple years that fifth and sixth spot in the Bay became harder to fill and there was more discrepancy in the Lake. The changes were pretty dramatic and something we really needed to look at."

"The PAL is finally facing what we're facing," Metheany said.

Historically, the Sequoia Union High School District schools (M-A, Woodside, Carlmont and Sequoia) were at one time aligned with the Palo Alto schools in the South Peninsula Athletic League, so it wouldn't be a drastic change in that regard.

Sell also said he thinks more

equitable schedules would result in better turnout for programs struggling with a lack of players.

"Kids are being very discriminating about what activities they pursue," he said. "Do they want to go through the sacrifices to play a sport that will have four or five running clocks in a season and stare down the barrel of five miserable experiences? The gap between the top teams and lower teams continues to grow. We want to try to make sure the sport is an enjoyable experience."

An SCVAL/PAL merger would make a lot of sense, but it is not the only possible realignment scenario being discussed. The Campbell Union High School District schools (Del Mar, Prospect, Branham, Westmont and Leigh) have expressed some interest in leaving the Blossom Valley Athletic League and joining the SCVAL.

Again, from a geographic standpoint, that move would carry a certain amount of logic.

"The lacrosse team at Lynbrook walks to Prospect for matches," Metheany noted.

Also, Leigh and Westmont are located right on the outskirts of Los Gatos in another geographic link.

Only in time will we see how it all plays out.

—Glenn Reeves

## Still having trouble hearing?

Join us for a complimentary consultation and personalized sound demo



Earlens improves speech recognition by **25%**\*



Participants in an independent study preferred the Earlens extended bandwidth **8:1**\*



Earlens brings listeners **16x** closer to normal hearing in the critically important high frequencies\*



Earlens delivers a frequency range **2.5x** broader than conventional hearing aids\*\*

\*Folkeard et. Al. "Detection, Speech Recognition, Loudness, and Preference Outcomes with a Direct Drive Hearing Aid: Effects of Bandwidth."  
\*\* Data on file at Earlens.



### May is National Better Hearing Month

If you suspect hearing loss for yourself or a loved one, or already have a hearing aid but are still missing some sounds, we encourage you to speak to an audiologist. There are many new hearing solutions that can help, like a novel technology called Earlens, which TIME Magazine recently named one of the "100 Best Inventions" of 2020. Find out how you might benefit through a complimentary consultation.



### Complimentary Private Consultations with a Sound Demo

Wednesday, May 19

Earlens Hearing Center - 4055 Campbell Avenue, Menlo Park

Call (650) 417-9856 or visit [earlensevents.com/PAWbetter](http://earlensevents.com/PAWbetter) to reserve your spot. Spaces are limited. COVID protocols will be followed. Call now to RSVP.

**ACCESSIBILITY***continued from page 5*

26 preserves in compliance with the federal Americans with Disabilities Act.

On April 14, staff presented the board of directors with its first progress update since the district approved its federally mandated ADA Self-Evaluation and Transition Plan in May 2019. The ADA's 1990 law requires public agencies to provide equal access to programs, services and activities. Midpen's plan, which identified 1,075 ADA barriers at its facilities, is the district's first update in 28 years.

So far, the district has removed 208 out of 554 barriers identified for upgrades within the first five years of the Transition Plan, Susanna Chan, district ADA coordinator and assistant general manager for project planning and delivery, said during the directors meeting.

In addition to widening trailhead stiles, district crews also have upgraded restrooms at Windy Hill, Russian Ridge and Monte Bello preserves by replacing dilapidated, single-stall restrooms with new double-stall, ADA-compliant restrooms; installing an ADA-accessible parking spot; constructed accessible paths from the parking stalls to the restrooms; and adjusted door pressure at its buildings in high-usage areas. The district also purchased assisted listening devices for access to public meetings.

In the coming months, Midpen is prioritizing upgrades to restrooms, parking, signage and path access at Daniels Nature Center, Skyline Ridge and Rancho San Antonio, Chan said.

"This is a significant accomplishment amid COVID, wildland fires and other disruptions," noted an April 14 general manager's report to the board.

The first round of projects is part of the district's five-year barrier-removal work outlined in its Transition Plan. This phase is focused on widening stiles and gates at trailheads, removing logs and upgrading restrooms, drinking fountains, parking lots

and trailhead signage to inform users about a trail's distance, gradient and surface.

Smaller capital improvements that cost under \$50,000 are set to be completed in one to 10 years; larger projects such as buildings, bridges and major trail building could take up to 15 years.

**Lobbying for change**

Since his injury, Simonson has lobbied and worked with Midpen staff to assess and repair impediments to access. He did a "walk and roll" with staff on trails to look at sections that are hazardous to hikers and those using walking aids.

"Of all the challenges, one stands out the most: the entrance and exit to open-space areas. Even to access fire roads and trails, there are gates, bollards and fencing that were put here to prohibit motorized vehicles years ago," Simonson said.

He frequents the El Corte de Madera Creek Preserve and Sierra Azul's Mt. Umunhum and Lime Kiln/Kennedy trails. The trails had wheelchair-impassable stiles that were 30 inches wide, but the district has replaced them with 36-inch-wide stiles he can now use. Parts of the Kennedy Trail were eroded; loose rock atop hard rock made the surface slippery, he said. The district has been responsive to addressing those issues, he said.

Bob Coomber, aka "Four Wheel Bob," an avid outdoorsman and former Livermore City Council member, agreed.

Complications from Type 1 diabetes caused him to use a wheelchair, but Coomber, 66, has used his upper-body strength to hike in the wilderness with his wheels.

He says he isn't your average wheelchair hiker. He's made multiple attempts to cross the Inyo Forest's 11,845-foot Kearsarge Pass in the Sierra Nevada and hikes in other seemingly inaccessible places. Facing impediments, he's crawled and dragged his wheelchair across boulder-strewn terrain.

Most preserve and park trails aren't that challenging.

"(They're) OK, but they're not for the casual wheelchair user who wants to get out to a place that is accessible but wild," he said.

Many trails are too narrow and uneven. Anyone in a power wheelchair would fall to the side because the chairs are too heavy, he said. Sections of trails are also banked to improve water runoff during rainstorms, but that can make them hazardous or unusable for wheelchairs.

Overgrowth around lakes and waterways also makes it hard to get around, he said. Some entrances are also too steep and rutty. Even usually wide and accessible fire roads can be too narrow. Some roads and trails also have deep gravel that mires wheels.

"It's like going into quicksand," he said.

Coomber powers his way through by maneuvering his chair on two wheels — popping wheelies — but many people can't do that, he said. Wildlands and building an accessible trail are not mutually exclusive, he said. The Independence Trail outside of Nevada City in the western Sierra Nevada — the first identified wheelchair-accessible wilderness trail in the country — offers hard-packed surfaces, bridges over the Yuba River and a nearly leveled, wide trail, he said.

He acknowledged there's a balance between making some trails accessible and not harming the environment. "Will resolving the issue to make it accessible make a better trail or ruin it for everyone?" he said.

The value of open space access for all should not be underestimated, he said. Open space is "a comforting kind of place" to listen to the wind, enjoy the greenery of majestic trees, colorful wildflower meadows and rushing water — a great asset for people who "spend 99% of the time indoors and the other 1% in the doctor's office," he said.

**Leveraging progress**

Midpen currently offers 11 "easy access trails" to accommodate seniors, families with strollers and people using

assistive devices such as walkers and wheelchairs. Most easy access trails are at least 4 feet wide, have an incline generally not exceeding 5% and feature fairly uniform surfaces. Several proposed extensions to the trails are being considered. Bear Creek Redwoods and La Honda Creek preserves' master plans call for additional easy access trails, for example.

The district has added to its progress by leveraging capital improvement and maintenance projects to add ADA access improvements. As part of its 2019 Ravenswood Bay Trail project, which resurfaced 3,200 feet of trails, the board approved a contract change that resurfaced the entire levee trail surrounding Cooley Marsh as an easy access trail. Plans for the Deer Hollow Farm White Barn Rehabilitation project currently under construction would add a

new ADA-compliant drinking fountain and accessible path, according to the general manager's report.

For Simonson, the updates indicate a recognition that inclusion is no longer an afterthought.

As improvements make the open spaces more welcoming, he hopes they'll attract more people to enjoy the outdoors.

"I would love to see more folks with disabilities using open space areas. It's everything that I do. It is my connection with nature. It is what I did before I got my injury and what I planned to do forever. It's kind of like my religion, my church. I love going out there and exploring plants and animals and the views in the fresh air," he said. ■

*Email Staff Writer  
Sue Dremann at sdremann@paweekly.com.*

## Public Notices

**995 Fictitious Name Statement**

MINT CHIROPRACTIC CARE  
FICTITIOUS BUSINESS NAME STATEMENT  
File No.: 287217  
The following person(s) is (are) doing business as:  
Mint Chiropractic Care, located at 600 McLellan Drive, So. San Francisco, CA 94080, San Mateo County.  
Registered owner(s):  
KRISTY CARRANZA  
600 McLellan Drive  
So. San Francisco, CA 94080  
This business is conducted by: An Individual.  
The registrant commenced to transact business under the fictitious business name(s) listed above on N/A.  
This statement was filed with the County Clerk-Recorder of San Mateo County on April 2, 2021.  
(ALM Apr. 16, 23, 30; May 7, 2021)

BUCIO TRUCKING  
FICTITIOUS BUSINESS NAME STATEMENT  
File No.: 287212  
The following person (persons) is (are) doing business as:  
Bucio Trucking, located at 909 Tinsley St. #E110, E. Palo Alto, CA 94303, San Mateo County.  
Registered owner(s):  
N&N TRANSPORTATION LLC  
909 Tinsley St. #E110  
E. Palo Alto, CA 94303  
California  
This business is conducted by: A Limited Liability Company.  
The registrant commenced to transact business under the fictitious business name(s) listed above on 5/14/2019.  
This statement was filed with the County Clerk-Recorder of San Mateo County on April 1, 2021.  
(ALM Apr. 16, 23, 30; May 7, 2021)

AERIEL SKINNER OLYMPIC FUND.  
FICTITIOUS BUSINESS NAME STATEMENT  
File No.: 287289  
The following person (persons) is (are) doing business as:  
Aerial Skinner Olympic Fund., 2995 Woodside Rd. #400, Woodside, CA 94062, San Mateo County.  
Registered owner(s):  
STEVEN FLYNN  
2995 Woodside #400

Woodside, CA 94062  
This business is conducted by: An Individual.  
The registrant commenced to transact business under the fictitious business name(s) listed above on N/A.  
This statement was filed with the County Clerk-Recorder of San Mateo County on April 9, 2021.  
(ALM Apr. 23, 30; May 7, 14, 2021)

AUTO - VINO A PRESERVE FOR FINE CARS AND WINE  
FICTITIOUS BUSINESS NAME STATEMENT  
File No.: 287368  
The following person (persons) is (are) doing business as: AutoVino - A Preserve For Fine Cars and Wine, located at 205 Constitution Dr., Menlo Park, CA 94025, San Mateo County.  
Registered owner(s):  
ATHERTON ASSOCIATES, INC.  
205 Constitution  
Menlo Park, CA 94025  
California

This business is conducted by: A Corporation.  
The registrant commenced to transact business under the fictitious business name(s) listed above on 1-16-08.  
This statement was filed with the County Clerk-Recorder of San Mateo County on April 15, 2021.  
(ALM Apr. 30; May 7, 14, 21, 2021)

BAY AREA MOBILE NOTARY & SERVICES  
FICTITIOUS BUSINESS NAME STATEMENT  
File No.: 287381  
The following person (persons) is (are) doing business as:  
Bay Area Mobile Notary & Services, located at 1103 Carlton Ave., Menlo Park, CA 94025, San Mateo County.  
Registered owner(s):  
DEADRA LAMPKIN  
1103 Carlton Ave.  
Menlo Park, CA 94025  
This business is conducted by: An Individual.  
The registrant commenced to transact business under the fictitious business name(s) listed above on N/A.  
This statement was filed with the County Clerk-Recorder of San Mateo County on April 16, 2021.  
(ALM Apr. 30; May 7, 14, 21, 2021)

**Call Alicia Santillan at 650-223-6578 or email asantillan@paweekly.com for assistance with your legal advertising needs. The deadline is Monday at noon.**

**PARCEL TAX***continued from page 1*

to renew the soon-to-end tax, Measure O, which expires in June and raises about \$1.2 million annually for the district. It funds advanced math, science and technology, reading, writing, art and music programs; reduced class sizes; and retention of teachers for the district's two schools, Ormondale and Corte Madera, according to the district website. The tax also covers 17% of district teachers' salaries,

according to the ballot measure.

Measure O passed in 2013 with 69% of the vote and consolidated two expiring measures: Measure C (with an annual tax of \$290 per parcel) and Measure D (\$168 per parcel), and increased the rate by \$123 to \$581, Ngo said.

All voters who live within the school district boundaries, which extend beyond those of the town of Portola Valley, could vote on the bond measure. The district includes Woodside residents who live in the Skyllonda

and Skywood Acres neighborhoods and off Philips and Family Farm roads, and part of Mountain Home Road.

The next results will be released after The Almanac's press deadline, on Friday, May 7, at 4:30 p.m., according to the San Mateo County Elections Office. The Elections Office plans to certify the results on June 3. ■

*Email Staff Writer Angela Swartz at aswartz@almanacnews.com.*



# RESOLUTION NO. 2239 - (2021)

## RESOLUTION OF INTENTION TO ANNEX CERTAIN TERRITORY TO THE WEST BAY SANITARY DISTRICT ON-SITE WASTEWATER DISPOSAL ZONE Lands of Turnquist

District Board of West Bay Sanitary District finds and determines as follows:

A. This Resolution of Intention is adopted pursuant to the District's "Zone Master Annexation Resolution" ("ZOMAR"), which was adopted by the District Board August 12, 1996. The provisions of ZOMAR are incorporated by reference into this Resolution of Intention.

B. The District has received an application to annex a parcel of real property (the "Parcel") to the District's On-Site Wastewater Disposal Zone (the "Zone"). The Parcel is described in Exhibit "A" attached to this Resolution of Intention and the description contained in the Exhibits are incorporated by reference. The name and address of the applicants and the number, type, volume and location of on-site wastewater disposal systems which are proposed to operate on the parcels to be annexed are described in Exhibit "B" attached to this Resolution of Intention and the information contained in the Exhibit are incorporated by reference.

C. The applicants have demonstrated to the satisfaction of the District Board that the Parcel constitutes "real property" for the purposes of Section 2(b) of ZOMAR in that:

X. All of the conditions described in Subsections i., ii., iii., iv. and v. of ZOMAR Section 2(b) are satisfied; or Other conditions exist which demonstrate that the Parcel will benefit directly or indirectly from the activities of the Zone. If applicable, those conditions are also set forth in Exhibit "B" and are incorporated by reference.

D. All of the conditions and requirements of ZOMAR Sections 2(a), 2(c), 2(d) and 2(e) have been fully satisfied.

In consideration of the foregoing findings and determinations,

**IT IS RESOLVED** by the District Board as follows:

1. It is the intention of the District Board to annex the Parcel to the Zone pursuant to the provisions of ZOMAR and applicable provisions of law.
2. In conjunction with a meeting of the District Board to be duly and regularly called and conducted, the Board will conduct a Public Hearing for the purpose of considering all matters pertaining to this Resolution of Intention.

The time, date and place of the Public Hearing are:

Date: June 9, 2021  
 Time: 7:00 PM  
 Place: West Bay Sanitary District Offices  
 500 Laurel Street, Menlo Park, CA 94025 & via Zoom

At the Public Hearing, all interested persons will be heard.

3. This Resolution of Intention shall be published and copies shall be delivered to the persons and entities as specified in ZOMAR Section 2(e)(i).
4. A true copy of this Resolution of Intention shall promptly be filed for record in the office of the County Recorder of the County of San Mateo.
5. The District Manager shall cause the matters set forth in Sections 3 and 4 of this Resolution of Intention to be completed as directed.

### Exhibit A

**Exhibit A**

ANNEXATION TO WEST BAY SANITARY DISTRICT  
GEOGRAPHIC DESCRIPTION

All that certain real property situate in the Town of Portola Valley, County of San Mateo, State of California, being all of Lot 29 in Block 1, as shown on that certain map entitled "TRACT NO. 774 ARROWHEAD MEADOWS UNIT NO. 4, BEING A PORTION OF THE RANCHO EL CORTE MADERA" filed on March 17, 1959 in Volume 50 of Maps at Pages 45-48, Records of the County of San Mateo, State of California, and being more particularly described as follows:

Beginning at the centerline intersection of Meadowood Drive and Navajo Place;

Thence (1) South 73°45'00" E 25.00 feet to the intersection of the centerline of Navajo Place and the easterly line of Meadowood Drive, Thence (2) along said easterly line of Meadowood Drive South 16°15'00" West 45.00 feet to the TRUE POINT OF BEGINNING of this description;

Thence leaving said easterly line, (3) northeasterly on the arc of a curve concave southeasterly, the center of which bears South 73°45'00" East, having a radius of 20.00 feet, a chord length of 28.28 feet, a central angle of 90°00'00" and length of 31.42 feet;

Thence (4) along the southerly line of Navajo Place (50' wide right of way) South 73°45'00" East 305.31 feet;

Thence (5) leaving said southerly line, South 24°47'01" West 150.00 feet;

Thence (6) North 71°36'25" West 303.26 feet to said easterly line of Meadowood Drive (50' wide right of way);

Thence (7) along said easterly line of Meadowood Drive North 16°15'00" East 117.00 feet to the TRUE POINT OF BEGINNING.

Containing 1.03 acres, more or less.

For assessment purposes only. This description of land is not a legal property description as defined in the Subdivision Map Act and may not be used as the basis for an offer for sale of the land described.

APPROVED  
SAN MATEO LOCAL AGENCY  
FORMATION COMMISSION  
455 COUNTY CENTER  
REDWOOD CITY, CA 94063

EXHIBIT A PAGE 1 OF 2

### Exhibit B

**Exhibit B**

WEST BAY SANITARY DISTRICT  
EXHIBIT "B"  
SITE LOCATION  
4 NAVAJO PLACE  
PORTOLA VALLEY, CA  
GRINDER SYSTEM

(1) Grinder Pump System  
200 Gallons Per Day (GPD)  
APN: 077-300-130  
Lands of Turnquist  
4 Navajo Place  
Portola Valley, CA  
Location of System: Front of property

© OpenStreetMap (and) contributors, CC-BY-SA

### RETURN TO OFFICE

continued from page 5

to the way we were," though he didn't provide specific details.

VMware will be offering employees the choice to permanently work from home as part of the company's digital-first approach, a company spokesperson wrote in an email. Under the program, the company will allow employees to work "from any location that accelerates their productivity and advances their personal and professional goals during and after the pandemic," the spokesperson said.

Currently, VMware prohibits meetings and events of more than 10 people at the office — a policy that will remain in effect until at least July 30. Few employees are currently working at the office, according to the company.

In a companywide survey, Intuit found that 80% of its employees prefer a "hybrid work-place model," while only 14% of employees preferred completely remote work. As a result, the company will be implementing a hybrid work model that requires employees to work on-site only two to three days a week, according to a company blog post. Intuit announced that it plans to reopen at 40% capacity on a voluntary basis, but did not provide a reopening date.

Many companies have indicated that they are not requiring employees be vaccinated against COVID-19 at this time.

"Google is not requiring vaccinations for employees to return to the office, but we are strongly encouraging it," according to the spokesperson.

Amazon, which has a 200,000-square-foot-office on University Avenue in East Palo Alto, announced in a company blog that it will continue to allow employees to work from home through June 30 and will not require vaccines for employees or contractors. VMware and Facebook also have indicated that they will not require employees to be vaccinated before returning to the office.

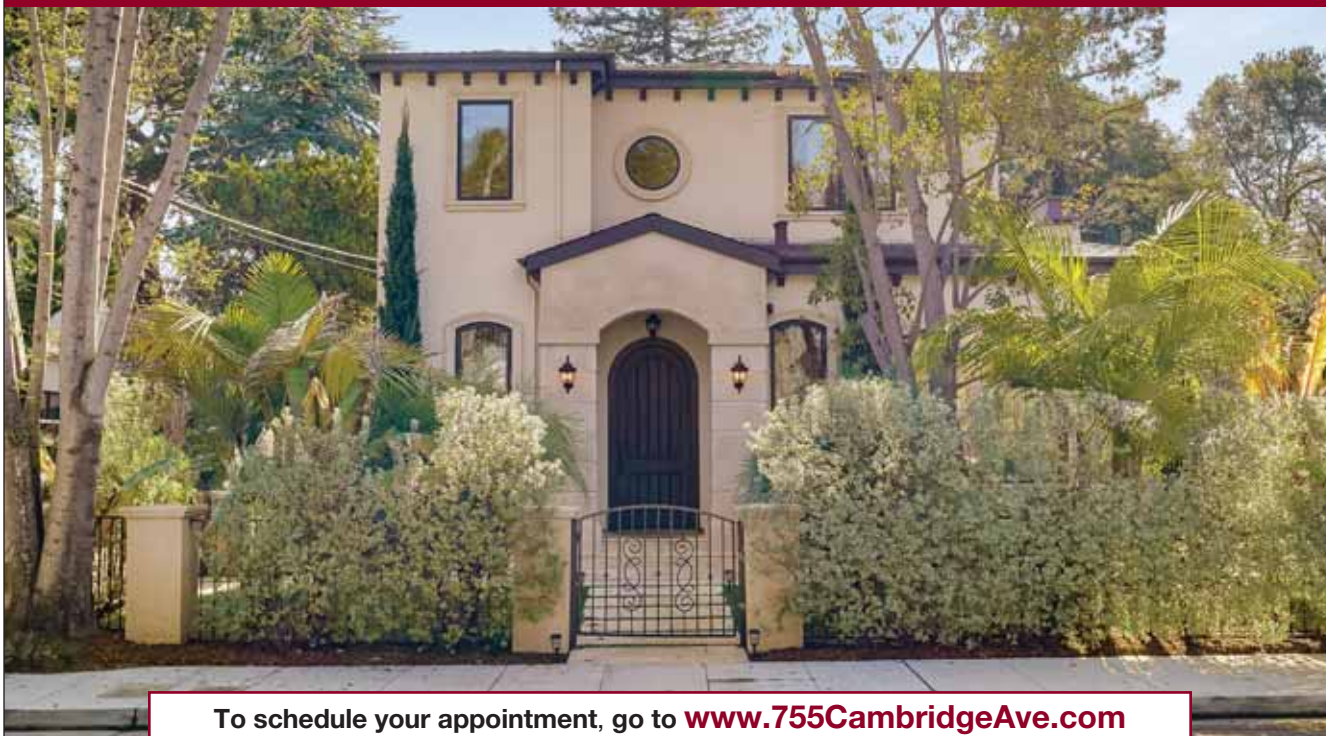
And when employees do return to their tech campuses, they can expect the office arrangement to be different.

At VMware, the workspaces will be redesigned with "reservable, unassigned seating" for employees who will work from home and at the office, according to a company spokesperson. Google is adopting a similar approach with reservable desks for employees and outdoor spaces for larger gatherings.

Even as companies prepare to reopen, all have signaled that their future plans remain flexible. ■

Email Staff Writer Lloyd Lee at [llee@paweekly.com](mailto:llee@paweekly.com).

**OPEN HOUSE** by Appointment: Saturday, May 8, 1:00 – 5:00pm



To schedule your appointment, go to [www.755CambridgeAve.com](http://www.755CambridgeAve.com)  
or call Hugh or Stephanie today!

**755 CAMBRIDGE AVENUE  
MENLO PARK**

- Newly built in 2017 and located in coveted Allied Arts
- 4 bedrooms and 4.5 baths on three levels
- Approximately 2,695 total square feet:
  - First floor: 815 sq. ft.
  - Second floor: 685 sq. ft.
  - Lower level: 975 sq. ft.
  - Garage: 220 sq. ft.
- Exceptionally light-filled interiors feature soaring ceilings, ample windows, natural stone finishes, and wide-planked engineered wood floors
- Blocks to downtown Menlo Park's amenities, Allied Arts Guild, and world-class shopping and dining at Stanford Shopping Center
- Excellent Menlo Park schools

Offered at \$3,395,000

**HUGH  
CORNISH  
& ASSOCIATES**  
[HughCornish.com](http://HughCornish.com)

Over \$2.75 Billion in Sales  
#1 Agent in SF Bay Area  
Coldwell Banker, 2020  
#30 Agent in U.S.  
*The Wall Street Journal*, 2020

**HUGH CORNISH**  
650.619.6461  
hcornish@cbtnorcal.com  
CalIRE#00912143

**STEPHANIE ELKINS  
VAN LINGE**  
650.400.2933  
stephanie.elkins@cbtnorcal.com  
CalIRE#00897565



**GLOBAL  
LUXURY**

RESIDENTIAL BROKERAGE

The property information herein is derived from various sources that may include, but not be limited to, county records and the Multiple Listing Service, and it may include approximations. Although the information is believed to be accurate, it is not warranted and you should not rely upon it without personal verification. Real estate agents affiliated with Coldwell Banker Residential Brokerage are independent contractor agents and are not employees of the Company. ©2021 Coldwell Banker Residential Brokerage. All Rights Reserved. Coldwell Banker Residential Brokerage fully supports the principles of the Fair Housing Act and the Equal Opportunity Act. Owned by a subsidiary of NRT LLC. Coldwell Banker and the Coldwell Banker Logo are registered service marks owned by Coldwell Banker Real Estate LLC. CalIRE #01908304. ©Marketing Designs, Inc. 650.802.0888 / marketingdesigns.net



**WILDFIRE IS  
COMING.  
ARE YOU READY?**

Defensible space is your  
property's front line defense  
against wildfires.



For more information go to [www.menlofire.org/wildfires](http://www.menlofire.org/wildfires)

Sign up with [www.zonehaven.com](http://www.zonehaven.com)

## Protect families from homelessness. Extend the eviction moratorium.

By Miriam Yupanqui/CalMatters

### GUEST OPINION

I live and work in Silicon Valley, one of the most expensive places to live in the country. According to Zillow, the average price of a home is \$1.3 million.

But buried deep in this large swath of land, known for its dynamism and innovation, is East Palo Alto, a working-class Latino community where my extended family still lives.

During a pandemic where giant tech corporations saw record-breaking profits, people in my community saw record-breaking panic. High transmission rates of COVID-19 among the Latino community came because of factors like preexisting health conditions, type of employment and overcrowded housing.

As someone who grew up in a multigenerational working-class household, the scene playing out in East Palo Alto and other Latino Silicon Valley neighborhoods is one I understand. Families in these households were faced with the most challenging decision this past year — stay home

to avoid exposure to the virus or lose the paycheck that helps pay the nearly unaffordable rent.

Right now, California has protective legislation in place that prohibits eviction and foreclosure for nonpayment of rent or mortgage during the COVID-19 period. It also eliminates debt for tenants who were unable to pay rent during the pandemic. Finally, it compensates small landlords and nonprofit housing operators who need assistance to ensure housing stability for their tenants.

Although California has these protections in place, saving millions of Californians from losing homes by protecting tenants from evictions due to missed rent, this protection ends in June. Hope is on the horizon with vaccination rates ticking up, but the financial impact of COVID-19 rages on.

This problem is echoed across the state as Californians have lost more jobs during COVID-19

than during the Great Recession, and unemployment is higher among Californians of color.

The urgency to extend eviction protections could not come at a more crucial time, especially since many of the people I serve at Nuestra Casa, a local nonprofit serving the Latino community in Silicon Valley, have lost jobs and have no income. Rent debt is growing at a staggering rate.

Unfortunately, this crisis requires systemic, longer-term interventions. At a minimum, California must extend the moratorium past June for people still impacted by the pandemic. Many people will not be able to return to work by then.

At a local level, thousands in San Mateo County receive support from robust rental assistance programs. But the scale of this problem is beyond those programs' scope, and these resources are quickly exhausted. The application process is also complicated, especially for residents with limited time and English proficiency.

One step in the right direction

is the California Legislature's approval of Senate Bill 91. SB 91 authorizes the use of \$2.6 billion in federal funds to pay landlords rent owed by qualifying tenants with COVID-19 financial hardships. Some of these funds will also go to organizations with deep roots in communities, like Nuestra Casa, to help tenants complete complicated rental assistance applications.

By extending the moratorium, we can ensure that rental assistance money achieves its intended purpose, preventing homelessness and getting money into the pockets of landlords who need it.

As a next step to address what was already a severe housing crisis before COVID-19, why not apply the same approach to keeping people housed during the pandemic? California can be a leader in a model that prioritizes getting the rent paid, preventing evictions and reducing homelessness, rather than prioritizing speedy evictions where landlords do not get the rent money owed.

If we don't continue these

interventions, vulnerable families living in Silicon Valley will be pushed out for good. They will be forced to choose between food or housing. Evictions will also increase the spread of COVID-19 and other health conditions, further harming all of us.

California can do the right thing. It can choose to look away and let this problem fester in our communities. Or it can choose people like my family and my neighbors — renters, homeowners, small landlords and essential workers.

Because in the Golden State, the fifth-largest economy in the world, everyone deserves a place to call home.

*Miriam Yupanqui is the executive director of Nuestra Casa de East Palo Alto and can be reached at myupanqui@nuestracasa.org. This piece was first published by CalMatters, a nonpartisan, nonprofit journalism venture that works with media partners throughout the state, including The Almanac.*

### LETTERS

Our readers write

#### Housing proposal in Portola Valley

As a 39-year resident of Ladera, a community folded into the influence of Portola Valley by a change in ZIP code some time ago, I feel obliged to comment on the opinions voiced from "central Portola Valley" by Portola Valley Neighbors United (PVNU), who have distributed a printed "newsletter" throughout my neighborhood. The NIMBY sentiments are focused on stopping residential development similar in scope and density to Ladera on the Stanford Triangle, a 75-acre wedge of property located a bit further up Alpine Road where approximately 7 acres are proposed for much-needed middle-class faculty housing at a density that matches my neighborhood and a few other areas within town limits but is higher than most of Portola Valley.

It is a disappointment to read these "newsletters" claiming to "examine the rich natural and cultural history of Portola Valley," when in actuality it is just propaganda that does not belong in our community at all.

Portola Valley is blessed with extensive access to open space and wildlife. Importantly, the wedge is private property and makes marginal contributions above and beyond all that assembled through the Midpeninsula Regional Open Space District and additional efforts by nonprofit organizations. Importantly, all of the marginal contributions of the wedge would be sustained by the proposed development given that roughly 68 acres that are currently wooded terrain would remain so, and what is currently used for horses would become Stanford faculty housing. Thus, PVNU arguments that they seek to "protect the wildlife corridor owned by Stanford that connects Felt Lake to Westridge," "protect the rural ecosystem of the Stanford Wedge" and "reduce the fire risk" amount to

hollow arguments. Each is easily dismissed by the facts, including the lower fire risk of housing at a density in neighborhoods like Ladera than in multi-acre wooded properties that are typical in Portola Valley. The wedge offers an opportunity for liberal-minded Portola Valley residents to embrace sensible change and ensure that young faculty find affordable housing in a remarkably expensive area!

*Edward MocarSKI  
Professor emeritus,  
Stanford University  
Erica Way, Ladera*

#### School reopenings

I know that we live in an imperfect world and that we must do the best. However, after reading Sen. Becker's opinion about schools reopening (Guest opinion: "Why we decided to send our kids back to school," April 30), I believe he needs to provide more information for his position.

There are 1,050 unique school districts in California. He seems

to be speaking solely for fifty-five. Fine. But should not the others representing over 6 million students in almost 1,000 school districts benefit from his discoveries and insights? Questions: What does he mean by "...limited in-school COVID-19 spread..." Limited? Who knows and decides if it is limited? What are the testing protocols in place now and who is affected by the consequences of this limited spread? Who are the children "at risk?" Will a limited spread become broad as the virus mutates into variants? What are his "prevention strategies?" Should teachers and staff personnel just "feel" safe as opposed to being safe actually? Does he know that an "opportunity" to receive one of the vaccines is different from truly receiving one; that a person who has received the vaccine may still suffer from and transmit the virus because of "breakthrough" infections? What is the time frame for seeing his remedies move from forthcoming to in place? I believe he needs to provide

much more information that just writing a guest opinion, as he is an elected representative and not just someone like me with an opinion.

*Jeff Colflesh  
Placitas Avenue, Menlo Park*

### What's on your mind?

From City Hall politics and the schools to transportation and other pressing issues, the Almanac aims to keep readers informed about their community. But we also want to hear from you.

Tell us what's on your mind by sending your letters to letters@AlmanacNews.com. Or snail-mail them to: The Almanac, 450 Cambridge Ave., Palo Alto, CA 94306.

Letters should be no longer than 300 words.

Questions? Email editor@AlmanacNews.com, or call 650-223-6537.



**94062**  
WOODSIDE

## 3500 WOODSIDE ROAD

RJ Dailey construction | Competition diving  
Organic gardens | Solar powered | 5 acres

Offered at \$27,000,000 | [3500Woodside.com](http://3500Woodside.com)



Ranked #6 Small Team Nationally, per *The Wall Street Journal*, 2020

**GULLIXSON**

MARY 650 888 0860  
MARY@GULLIXSON.COM DRE 00373961

BRENT 650 888 4898  
BRENT@GULLIXSON.COM DRE 01329216



@gullixsonsteam

**COMPASS**



[www.gullixson.com](http://www.gullixson.com)

# Artscene

PEOPLE AND PERFORMANCES IN ARTS AND ENTERTAINMENT

## A fruitful year for 'Pear Slices 2021'

### Bite-size play festival of new works features local playwrights



By Karla Kane

As we're all too aware, we've been living under COVID-19 conditions for quite a while now. One way of marking this passage of time, in the Peninsula arts world anyway, is by noticing that we're now onto the second year of virtual "Pear Slices." And while 2020's production was done via Zoom, as companies inch toward reopening for in-person audiences, the Pear Theatre has (in some ways) returned to a more traditional format for its annual roundup of short plays by members of its Pear Playwrights Guild while still presenting it digitally on demand.

Last year's production was the Pear's first show performed under lockdown regulations. Since then, the Mountain View-based theater company has had a year of experimenting with how to film and share its work. Now, thanks to the wonder of vaccines, testing and strict safety procedures, "Pear Slices 2021" looks and feels pretty much like live performances at the theater in the past.

The actors performed together on stage, mask-free (except

when it's part of the story), with theatrical lighting, costumes and all. While audiences don't get the energy and distraction-free vibe of being in person, one benefit of watching on video for verbal learners is the helpful closed-captioning option — another example of how pandemic adaptations have made theater more accessible in many ways. Because the nine Slices have been uploaded separately, audiences can choose when and in what order to watch them, although there is a suggested flow. Don't have the time or attention to watch the whole shebang straight through? Pick and choose at your leisure.

"Pear Slices" is a time-honored Pear tradition. Even if individual "Slices" may vary in quality from one to the next, or from year to year, it's always a treat to peek into the minds of local writers, to see the fruit of their efforts brought to life by a small cast and a couple of directors. In this case, the directors are Troy Johnson and Melinda Marks, and the actors are Maya Greenberg, Gaz Jemeel, Asha Kelly, Justin P. Lopez, Francheska Johanna Loy and Francisco Rodriguez.

As usual, the bite-size plays



Courtesy Squirrel Visuals

**Above:** Francisco Rodriguez and Justin P. Lopez perform in Matthew Fyffe's "A Stable Family" in the Pear Theatre's annual new works festival. **TOP:** Asha Kelly plays Queen Cleopatra VII in "Wheel of Fortuna" by Bridgette Dutta Portman.

cover a range of topics and tones, from mind-bending and mysterious to contemporary realism. Leah Halper's two offerings both deal with real-world parenting and family themes, although in quite different contexts. In the over-long "Hello Heriberto," a young couple on the verge of becoming parents frets over the struggle to live in modern-day California. In "Yes Yes Maybe," one of the production's strongest pieces and based in historical fact, a 40-year-old Buenos Aires man confronts his mother about some long-buried family secrets. Matthew Fyffe's "A Stable Family" also deals with parenthood, in the form of a lighthearted take on the fears of inadequacy experienced by Joseph and the Three Wise Ones at the birth of Jesus.

Two plays — "Power(less) Pete" by Meghan Maugeri and "Sequestered" by Barbara Anderson — set the action within the COVID-19 pandemic, the former about a depressed superhero stuck at home and the latter about an overscheduled (and, it must be said, overprivileged and rather irritating) couple who

can't find time in their docket of online meetings and streaming hobby classes to be present together. "Sequestered" boasts a winking moment of self-deprecating humor when the wife notes that while everyone in her online screenwriting class is writing about the lockdown, she's sure she has a unique spin on it.

"Don't Let Go" by Carol Wolf explores a primitive society in which having a useful extra sense may be more of a hazard than a benefit in terms of fitting in to the group. Bridgette Dutta Portman's "Wheel of Fortuna" pits an anonymous goat herder, Queen Cleopatra VII and Emperor Nero against each other in a game show of destiny — which develops into a philosophy, ancient history and physics lesson — hosted by the unhappy goddess Fortuna.

Peggy Powell, like Halper, has two inclusions: "Keepsake," about a wife who's not too sure she's ready for her long-dead husband to be resurrected from cryogenic storage; and "Roadside Attraction," in which a couple stop for gas in the middle

of nowhere and have an odd encounter (while I was intrigued by "Roadside," I must admit to being baffled afterward).

Pear leader and show producer Sinjin Jones handles sound and video projections, with Kevin Davies as technical director, lighting designer Ben Hemmen, costume designer Pati Bristow and Kelly Weber Barraza as stage and production manager. Except for a few slight bits of buzz in the sound and a few trouble spots with filming focus, the Slices unfold smoothly and simply, with little interference from the camera.

"Pear Slices 2021," with its traditional look and feel yet accessibility for at-home viewers, is a nice showcase for what the Pear Playwrights Guild has been up to over the past challenging — yet fruitful — year.

"Pear Slices 2021" is streaming digitally on demand through May 23. Tickets are \$30-\$34. More information is available at [thepear.vbotickets.com/events](http://thepear.vbotickets.com/events). ▀

Email Arts & Entertainment Editor Karla Kane at [kkane@paweekly.com](mailto:kkane@paweekly.com).



Courtesy Squirrel Visuals

**Maya Greenberg is the leader** of a primitive society in "Don't Let Go" by Carol Wolf.

# Food & Drink

## New Peninsula Restaurant Week launches May 14

In an effort to provide diners more opportunities to support local restaurants as the Peninsula slowly reopens, Embarcadero Media's Peninsula Foodist is teaming up with Facebook to launch Peninsula Restaurant Week. From May 14-22, restaurants, bakeries and eateries of all stripes along the Peninsula will offer prix fixe deals and other menu specials available for dine in, delivery or curbside pickup.

As part of the new weeklong dining event, the Peninsula Foodist has asked participating chefs and restaurant owners to share their stories about what the past year has been like and where they see the industry headed. This week's Q&A features Manuel Martinez of La Viga Culinary Inc. (La Viga Seafood & Cocina Mexicana and LV Mar Tapas in Redwood City and San Agus Cocina Urbana in Palo Alto).

For more information about Peninsula Restaurant Week, go to [peninsularestaurantweek.com](http://peninsularestaurantweek.com).



Veronica Weber

**La Viga** serves a wide selection of tacos, including from left, carne asada with nopales salsa and red sauce; pollo with tomatillo sauce and guacamole; and cochiinita with pickled onion, habanero sauce and orange slices.

## Restaurant Week Interviews: 7 questions for Manuel Martinez

La Viga owner thought 'everything would be lost' after multiple pandemic shutdowns

By Sarah Klearman

**Tell me a little bit about you and your restaurants.**

I've been in the industry for the last 25 years working as a cook, an assistant chef and then as a chef. After that, I began opening restaurants for other people and then opening places for myself. The last nine years I've spent working for myself.

I'm currently operating three restaurants that I own here on the Peninsula — two in Redwood City and one in Palo Alto. I'm a chef by trade, but I'm also the mind behind everything here. Each restaurant has their own chef, so they do the kitchen operations, and I oversee them.

**Tell me about the year behind us — what's been the trajectory of your restaurants?**

The last year has been a rough year. It's nothing like I've seen before. I've opened and closed LV Mar at least four times, because we experienced some COVID-19 cases there, and the first thing we did was close and make sure everybody was safe. Ultimately, we were shut down twice, but we closed on our own another two times during the pandemic.

**With vaccinations increasing and California's daily case counts way down, does it feel like we're seeing the light at the end of the tunnel?**

I hope so. Although after being through all of this, I'm preparing to wait and see because anything could happen tomorrow. It could

be another shutdown or changing gears and operating at 25% ... or that we're allowed to open at full capacity. It's pretty unpredictable.

**Tell me about the biggest challenges you've faced as a restaurant owner as it pertains to lockdowns.**

I would say it's the uncertainty — that you don't know what's coming. I hope that we're on our way to fully opening up the economy and to making our businesses stronger ... but it's not up to me, unfortunately. There are things that I can do: have good food, serve it right and grow the business. And if the government lets me do business, I will do business. But unfortunately when they shut you down, and you can't do anything other than food to go, it's not good. That is basically tying your hands and your legs.

**Are there moments or experiences you've had this year that you've drawn upon to keep you going?**

Definitely my employees and my guests coming in and chipping in every day, trying to increase the volume of the business so we can bring another person back to work. Right when we closed the first time, we had like around 50 or so employees between our two restaurants. After we closed, we went down to four.

Opening the restaurants and bringing staff back — that's one of the best feelings I've ever had. I thought everything would be lost, but we've brought people back. ...

And then seeing the customers come back — some customers that you haven't seen for months, or even a year, now.

**Has the pandemic forced any kind of innovation or revelation in the restaurant space that you're excited about?**

I think the first one would be teamwork. We work as one now. It's not anymore, "I'm a server, and I only know how to serve people," or "I'm a dishwasher." It's everyone working together to achieve our daily goals. My team has been the highlight (of this year).

I discovered some of the restaurants are better at doing food to go than others. LV Mar is a pure service-driven restaurant; people go there because they like the space, they like what they get and they want to be served and get together. La Viga and San Agus are also service-based, but the type of food we serve there can be served to go (pretty) well. So we've been exploring that.

**What should customers know about supporting local restaurants during Peninsula Restaurant Week?**

I'm a service-driven chef and owner. I mean, we're no one without our customers. All that I ask is to be able to be open so I can serve them, and we can shine again. Customers want to go out and enjoy themselves. They want to go out with their friends and drink and eat. I would ask them to be patient with us and to be ready



Courtesy Rob Watkins

**Manuel Martinez** owns and operates La Viga and LV Mar in Redwood City. He opened San Agus in Palo Alto in spring 2020.

to support local restaurants.

This is a hard time for a lot of people. Some restaurants thought they would survive, and they didn't; some closed for a year, and now they're trying to reopen again, and everything is so different. The business is nothing like before.

(Reopening) might be overwhelming for a lot of restaurants, either because they are short people or resources. The industry is upside down, I think. We're looking forward to a much better year, but patience is key while restaurants get back to — well, not normal, but the new normal, whatever that is.

Email Writer Sarah Klearman at [peninsulafoodist@embarcaderopublishing.com](mailto:peninsulafoodist@embarcaderopublishing.com).

**LEHUA GREENMAN**



**"MOTHERS hold their child's hand for a moment and their heart for a LIFETIME"**



650.245.1845 COMPASS

# Epitome of Elegance in this Central Woodside Estate



222 Olive Hill Lane | Woodside | Offered at \$23,950,000 | [www.222OliveHillLane.com](http://www.222OliveHillLane.com)

For more information and to arrange a private showing of this exceptional estate, please contact:

## HELEN & BRAD MILLER

**COMPASS**

**Among Top Teams in SF Bay Area**  
*(per The Wall Street Journal rankings)*  
[www.HelenAndBradHomes.com](http://www.HelenAndBradHomes.com)

650.400.3426 | 650.400.1317  
[helen.miller@compass.com](mailto:helen.miller@compass.com)  
[brad.miller@compass.com](mailto:brad.miller@compass.com)  
License# 01142061 | License# 00917768



Rankings provided courtesy of Real Trends, The Thousand list of individual agents by total sales volume in 2020. Compass is a real estate broker licensed by the State of California and abides by Equal Housing Opportunity laws. License Number 01527235. All material presented herein is intended for informational purposes only and is compiled from sources deemed reliable but has not been verified. Changes in price, condition, sale or withdrawal may be made without notice. No statement is made as to accuracy of any description. All measurements and square footage are approximate.

Bold. Meticulous. Versatile.  
*The Best of California Living.*



121 Ash Lane | Portola Valley | Offered at \$26,950,000 | [www.121AshLane.com](http://www.121AshLane.com)

For more information and to arrange a private showing of this exceptional estate, please contact:

HELEN & BRAD MILLER

COMPASS

Among Top Teams in SF Bay Area  
*(per The Wall Street Journal rankings)*  
[www.HelenAndBradHomes.com](http://www.HelenAndBradHomes.com)

650.400.3426 | 650.400.1317  
[helen.miller@compass.com](mailto:helen.miller@compass.com)  
[brad.miller@compass.com](mailto:brad.miller@compass.com)  
License# 01142061 | License# 00917768



Rankings provided courtesy of Real Trends. The Thousand list of individual agents by total sales volume in 2020. Compass is a real estate broker licensed by the State of California and abides by Equal Housing Opportunity laws. License Number 01527235. All material presented herein is intended for informational purposes only and is compiled from sources deemed reliable but has not been verified. Changes in price, condition, sale or withdrawal may be made without notice. No statement is made as to accuracy of any description. All measurements and square footage are approximate.

## SPECIAL ONE YEAR LEASE RATE

### \$4.75 FS in Menlo Park

Get a bargain rate for this next year. Special incentive for a short term need or place to downsize. An affordable option instead of working from home! Individual offices with operable windows and no common access. Fantastic private and dedicated parking spaces. Enjoy this exclusive office space of approximately 2,300 SF+/- in the Menlo Park/Palo Alto corridor off of Middlefield Rd. No common entrances or spaces with other tenants; 6/7 large, private offices each with operable windows.

**Contact at 650-617-5572**  
**[lisa@springvalleypartners.com](mailto:lisa@springvalleypartners.com)**  
 License#01521620

**Spring Valley Partners**

# PENINSULA RESTAURANT WEEK

## It's the biggest food event on the Peninsula!

Join us for one week of exclusive dining from **May 14-22.**

### MENLO PARK

Bagel Street Cafe  
 Bistro Vida  
 Cafe Wisteria  
 Cafe Zoe  
 Camper  
 Coffee Bar  
 Cold Stone Creamery  
 Coupa Cafe  
 FEY Restaurant  
 La Stanza Cucina Italiana  
 Mama Coco  
 My Tasties  
 Octopus Japanese  
 Roma

### SAJJ Mediteranean

Tea It Up  
 The Counter  
 The Refuge  
 Togo Sandwiches  
 Village Hummus  
**MOUNTAIN VIEW**  
 Alice's Smokehouse  
 Asian Box  
 Bushido Izakaya  
 Chaat Paradise  
 Erik's Deli Cafe  
 Everest Cuisine  
 Oren's Hummus  
 Pokeworks

### SAJJ Mediteranean

Scratch  
 Sushi 88 & Ramen  
 Vaso Azzurro  
 Vive Sol  
 Yami Grill  
 Zareen's  
**PALO ALTO**  
 Ada's Cafe  
 Anatolian Kitchen  
 Asian Box  
 Bevri Georgian Restaurant  
 Cafe Pro Bono  
 Coupa Cafe

Hobee's  
 Italo Pizzeria Restaurant  
 Izzy's Brooklyn Bagels  
 Kara's Cupcakes  
 Kirk Steakburgers  
 La Bodeguita del Medio  
 La Fontaine Restaurant  
 Local Union 271  
 Lulu's  
 Nola  
 Old Pro  
 Oren's Hummus

Palo Alto Sol  
 Pizzeria Delfina  
 Rooth  
 San Agus Cocina  
 Sprouts Cafe  
 St. Michael's Alley  
 State of Mind  
 Sun of Wolf  
 Sundance The Steakhouse  
 Taverna  
 The Counter  
 Tin Pot Creamery  
 Zareen's

### PORTOLA VALLEY

Alpine Inn Beer Garden  
**REDWOOD CITY**  
 Coffee Bar  
 Coupa Cafe  
 La Viga Seafood & Cocina  
 LV Mar Tapas & Cocktails  
 Quinto Sol

### SAN CARLOS

Cuisinett Bistro & Market  
 Mama Coco  
 Noelani's Island Grill  
 Saffron Indian Bistro  
 Taurus Steakhouse  
 The Refuge  
 Town Restaurant

### STANFORD

Coupa Cafe

Learn more at [PeninsulaRestaurantWeek.com](http://PeninsulaRestaurantWeek.com)



**433 Encina Avenue, Menlo Park**



## Spacious Estate on Peaceful Country Lane



- **4 bedrooms, plus a den**
- **4.5 baths**
- **Main floor: 1,845 SF**
- **Upper floor: 1,895 SF**
- **Lower level: 1,785 SF**
- **Garage: 650 SF**
- **Lot size: 10,500 SF**

This meticulously maintained residence spans three levels and just over 6,000 total square feet offering significant bonus space (not included in MLS data) on the lower level with a large recreation/video room, exercise room, wine room and expansive home storage room.

Work-from-home? No problem! The flexible floor plan includes a dedicated home office, a formal dining or living room, a great room with vaulted ceiling — all with large accent windows opening to the lush yards.

Private, gated and in an exceptional mid-Peninsula location near Stanford University, Silicon Valley jobs, top private and public schools, this home will satisfy the most discriminating buyers.



**MARYBETH DORST**

650.245.8890

Marybeth.dorst@compass.com

DRE# 01345542

MarybethDorst.com

Compass is a licensed real estate broker and abides by Equal Housing Opportunity laws. All material presented herein is intended for informational purposes only. Information is compiled from sources deemed reliable but is subject to errors, omissions, changes in price, condition, sale, or withdraw without notice. No statement is made as to accuracy of any description. All measurements and square footages are approximate. Exact dimensions can be obtained by retaining the services of an architect or engineer. This is not intended to solicit property already listed.

**Offered at \$3,848,000**

**www.433Encina.com**

**COMPASS**



## 2151 OAKLEY AVENUE, MENLO PARK



### Bright, Inviting, with Top-Ranked Schools

Light-filled spaces and a modern floorplan highlight this stylish home in sought-after West Menlo, offering 5 bedrooms, 4 bathrooms, and nearly 2,100 square feet of living space, including a beautiful guest home. Towering trees frame a garden pathway leading to the covered front porch with delightful outdoor space. Inside, hardwood floors extend throughout expansive gathering areas, while fresh paint and ample natural light brighten the ambiance. Highlights of the home include the inviting living room, the dining room with a serving station, and the granite-appointed kitchen with stainless-steel appliances. The sizable master suite resides near a private outdoor entrance, while the home's additional bedrooms include one that easily converts into office space to meet all work-from-home needs. Outside, the detached guest house includes a full kitchen, while the backyard offers multiple areas for outdoor enjoyment and relaxation, including a Zen-like garden. Topping it all off is an outstanding location moments to downtown Menlo Park, Stanford University, and downtown Palo Alto, and served by top-ranked Las Lomas Elementary and La Entrada Middle, both of which are within one mile of the home (buyer to verify eligibility).

For more information, video tour & more photos, please visit:

[www.2151Oakley.com](http://www.2151Oakley.com)

Offered at \$2,488,000

Easy and safe access for potential buyers and Realtors®

Listed by Michael Repka of the DeLeon Team, the #1 Team in Menlo Park

Data from BrokerMetrics® based on MLS sales from January 1, 2020, to December 31, 2020, in Menlo Park, residential properties, with no off-MLS sales included in the rankings.

2.5% Commission Paid to Buyer's Agent • Waived if DeLeon Buyer's Agent

Michael Repka, DRE #01854880 | 650.900.7000 | michael@deleonrealty.com

中文諮詢請聯繫 Audrey Sun, DRE #01933274 電話: 650.785.5822 | www.deleonrealty.com | DeLeon Realty, Inc. | DRE #01903224