

The Almanac

THE HOMETOWN NEWSPAPER FOR MENLO PARK, ATHERTON, PORTOLA VALLEY AND WOODSIDE

NOVEMBER 19, 2021 | VOL. 57 NO. 10



WWW.ALMANACNEWS.COM

Pandemic-induced enrollment plunge persists for second year at local public schools

Local private schools see a big jump in applications

By Zoe Morgan and Angela Swartz

Local public schools are still seeing dwindling enrollment tied to the pandemic, but the declines were not as significant as last school year. At the same time, some private schools have seen big increases in applications.

The Almanac and Palo Alto Weekly teamed up for a data project to examine eight years' worth of enrollment figures for local school districts. Although local schools have generally seen enrollment decline in recent years, the pandemic dramatically accelerated that trend in many districts.

California public school districts collect enrollment data every October. Because the state

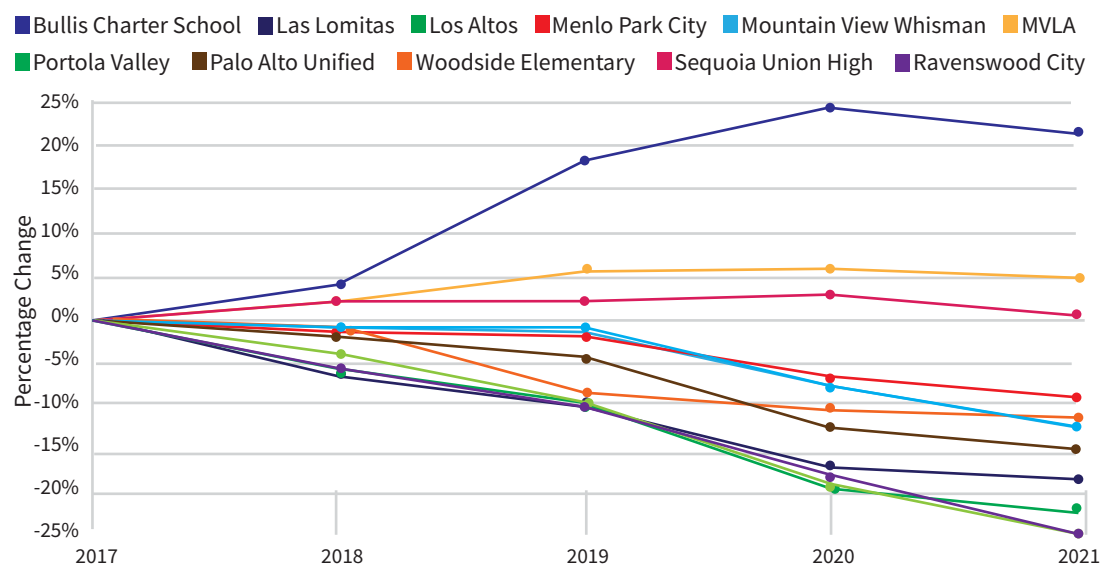
hasn't released final numbers for this school year, the 2021-22 data was self-reported by school districts to the Weekly and Almanac. Data from prior years is based on California Department of Education records. This school year's numbers may shift slightly as the data is finalized.

School administrators attribute enrollment decreases in part to families moving out of the area because of skyrocketing housing costs, now that many parents can work remotely, and students choosing to attend charter schools. The 2020 U.S. census also shows the number of young people on the Midpeninsula is shrinking, even as the overall population grows.

See **ENROLLMENT**, page 19

School enrollment trends over the past five years

Percent change in total enrollment compared to five years ago



School districts in California collect enrollment data every October. Because the state hasn't released final numbers for this school year, the 2021 data was self-reported by school districts to this news organization. Data from prior years is based on California Department of Education records. This school year's numbers may shift slightly as the data is finalized.

Source: California Department of Education and local school districts

Developers officially submit Parkline proposal to rebuild SRI campus

By Kate Bradshaw

It's official: There's now a proposal under review at City Hall to rebuild the 63-acre SRI campus hidden in the heart of Menlo Park.

Lane Partners, a Menlo Park-based developer, recently submitted plans to demolish the aging research and development campus at SRI and replace it with state-of-the-art research buildings, 400 new housing units, new landscaping with bike and pedestrian paths, and more than 25 acres of publicly accessible open space, according to proposal documents.

SRI, an independent, nonprofit research institute that is headquartered in Menlo Park and has a history of launching a number

of pioneering technologies, is currently housed in "obsolete and unsustainable buildings," according to the documents.

SRI is "outdated and, frankly, kind of out of place in a city like Menlo Park," said Mark Murray, principal at Lane Partners, in a recent interview.

Right now, he noted, there's a security fence running around about 90% of the site, and it's "not great looking."

"It impedes a huge chunk of land right in the middle of town," he said.

The plan is to remove that fence and open up routes through the property to safely walk, bike and recreate on 28 new acres of landscaped, publicly accessible land, all while creating new and improved workplaces for SRI

employees and adding housing for the community.

The development wouldn't add any square footage beyond what exists there now for office and research and development space, 1.38 million square feet, and would retain the same number of parking spots as currently exist — 3,200. Three of the existing buildings would be left on-site to allow SRI to continue operations during the construction process, according to proposal documents.

Among the open space offerings would be a multi-use sports field sized to accommodate under-10 soccer teams, a children's playground, outdoor exercise stations, a dog park, a

See **SRI PARKLINE**, page 14



Courtesy Lane Partners

A rendering of the proposed bike and pedestrian greenway to run along Ravenswood Avenue at the redeveloped SRI campus, Parkline.

INSIDE

VIEWPOINT 23 | ARTS 24 | FOOD 25

Read up-to-the-minute news on AlmanacNews.com

Nearly 75 years of vital services, enabling seniors to age in place.



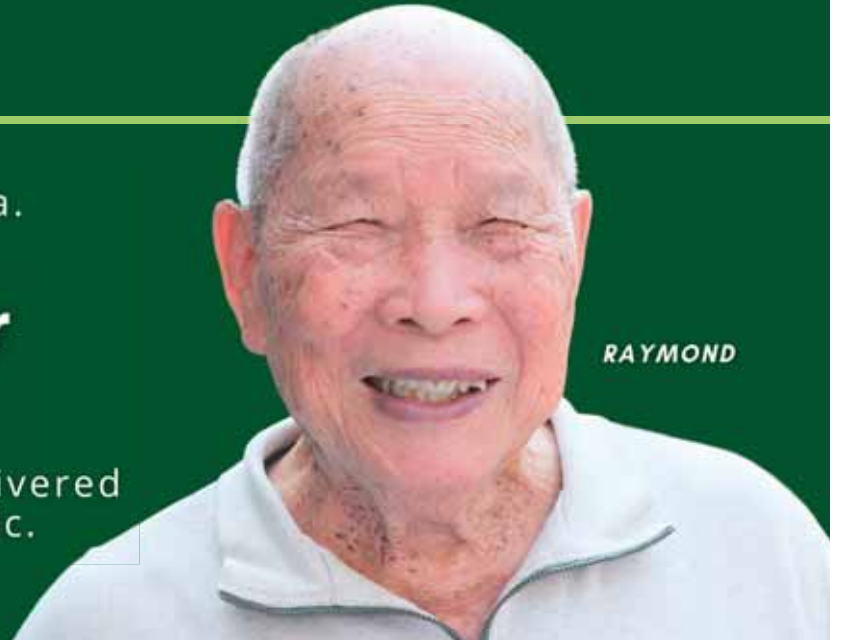
800 Middle Ave, Menlo Park, CA 94025
Tax ID # 94-1294939

**“PVI's Meals on Wheels is a life changer for me.
You give me hope. I am beyond grateful.”**

Hunger has more than tripled in the Bay Area.
Our senior community is most affected.

**Let's ensure no senior in our
community goes hungry.**

With your support PVI's Meals on Wheels delivered
288,000 nutritious meals during the pandemic.



LEARN MORE AND DONATE TODAY AT [PENVOL.ORG](https://penvol.org) >>

Aging seniors still most affected

We've shared an historic journey together since March 2020. As we all learn to live with COVID -19, aging seniors are still most affected, and the challenges are now much larger in scope for our diverse senior community.

Peninsula Volunteers, Inc.'s vital services for seniors are more critical now than ever. The pandemic's disproportionate impact on older adults has led to more widespread loneliness, isolation and health vulnerabilities. **Hunger has more than tripled in Bay Area counties**, jeopardizing the health and well-being of older adults. **Now nearly 1 in six seniors is facing hunger risk and cannot cover the cost of basic needs.**

Your generous impact is ongoing

You have been with us every step of the way. Because of you, we extended our reach during the pandemic, preparing and home delivering almost **288,000 nutritious Meals on Wheels** from our Menlo Park kitchen; placing over **47,500 wellness care calls and visits**; holding **12,462 combined virtual and in person sessions** with active seniors and with Alzheimer's clients to engage in exercise and stimulating learning activities; providing **4,093 transportation rides** for medical and grocery needs and **23,750 volunteer hours**. We continue to partner with local companies and restaurants to secure additional meals for those in need and continue to envision new and better ways to expand our support for our senior community in the new environment.

You may ask “how can I help local seniors like Raymond right now”?

Join us as we continue strengthening the senior community by helping us provide high -quality programs that keep your loved ones and neighbors fed, engaged, and living independently. Your gift of any size* made securely online at penvol.org/donate will change the lives of seniors now.

* A \$500 donation will support: one month of daily Meals on Wheels for two seniors; or full services for a week at Rosener House for an adult with Alzheimer's; or sixteen 30-minute personal training sessions at Little House; or 100 transportation rides at the subsidized rate.



For nearly 75 years, Peninsula Volunteers, Inc., a duly recognized 501 © (3) non-profit organization, has enabled seniors to age in place, driven by a profound legacy of caring and our core values of respect, commitment, trust, dedication, and compassion. Our essential programs serve over 6,000 Peninsula households and address the most pressing issues of aging adults by offering critical services to sustain their daily physical, nutritional, emotional, and mental health while achieving dignity and independence in their lives. PVI's innovative programs: Nutrition Services/Meals on Wheels; Adult Day Services at Rosener House; Health, Wellness and Lifetime Enrichments offerings at Little House; and on-demand Transportation Services at Little House., the Roslyn G. Morris Activity Center.

PREMIER PROPERTIES represented by **SCOTT DANCER**

Woodside



FOR SALE

EQUESTRIAN, 3 AC | OFFERED AT \$6,500,000

Woodside



FOR SALE

3 LEVEL ACRES | OFFERED AT \$8,750,000

Portola Valley



FOR SALE

ONE-OF-A-KIND | OFFERED AT \$25,000,000

Woodside



FOR SALE - LAND

3.6 ACRES | OFFERED AT \$1,250,000

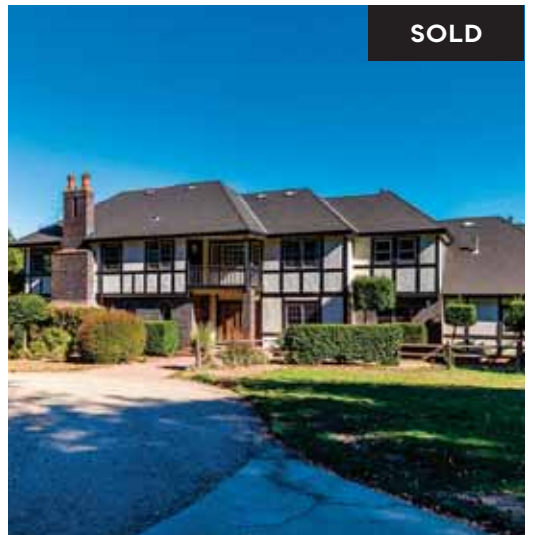
Woodside



FOR SALE

17.79 ACRES | OFFERED AT \$27,500,000

Woodside



SOLD

EQUESTRIAN, 3 AC | OFFERED AT \$11,500,000

Woodside



SOLD

1.48 ACRES | OFFERED AT \$6,850,000

Woodside



SOLD

2 ACRES, MT HOME | OFFERED AT \$5,950,000

Portola Valley



SOLD

THE RANCH | OFFERED AT \$4,150,000



COMPASS



SCOTT **DANCER**

650.888.8199
scott@scottdancer.com
www.scottdancer.com

2930 Woodside Road, Woodside, CA 94062
License # 00868362

Compass is the brand name used for services provided by one or more of the Compass group of subsidiary companies. Compass is a real estate broker licensed by the State of California and abides by Equal Housing Opportunity laws. License Number 01079009. All material presented herein is intended for informational purposes only and is compiled from sources deemed reliable but has not been verified. Changes in price, condition, sale or withdrawal may be made without notice. No statement is made as to accuracy of any description. All measurements and square footage are approximate.



1330 University Dr #76,
Menlo Park
OFFERED AT \$1,695,000
LISA KEITH
650.703.8644 · LIC. #00882247



451 Oak Grove Ave #3,
Menlo Park
OFFERED AT \$1,495,000
BRIAN AYER
650.242.2473 · LIC. #01870281



57 and 59 Los Trancos Rd,
Portola Valley
OFFERED AT \$11,100,000
PETER COWPERTHWAITTE
650.207.4101 · LIC #01012887



828 Lathrop Dr, Stanford
OFFERED AT \$3,700,000
CHRIS IVERSON
650.450.0450 · LIC. #01708130



16379 Skyline Blvd, Woodside
OFFERED AT \$7,895,000
SHALER BARNES
650.814.3451 · LIC #01446634



9 Miller Ct, Redwood City
OFFERED AT \$3,890,000
MARY JO MCCARTHY
650.400.6364 · LIC. #01354295



1614 Hudson St Unit #216,
Redwood City
OFFERED AT \$695,000
JOHN SHROYER
650.787.2121 · LIC. #00613370



1614 Hudson St Unit #202,
Redwood City
OFFERED AT \$775,000
LISA KEITH
650.703.8644 · LIC. #00882247



401 El Cerrito Ave, Hillsborough
OFFERED AT \$25,000,000
JENNIFER GILSON
650.642.6957 · LIC. #01889172



950 Macadamia Dr, Hillsborough
OFFERED AT \$18,880,000
JENNIFER GILSON
650.642.6957 · LIC. #01889172



11 North Quebec St, San Mateo
OFFERED AT \$1,288,000
JOHN SHROYER
650.787.2121 · LIC. #00613370



800 North El Camino Real
Unit 102, San Mateo
OFFERED AT \$885,000
JESSICA EVA
650.704.5483 · LIC. #01210450



651 Port Dr Unit 107, San Mateo
OFFERED AT \$668,000
JESSICA EVA
650.704.5483 · LIC. #01210450



1975 Webster St, Palo Alto
OFFERED AT \$18,280,000
GLORIA YOUNG
650.380.9918 · LIC. #01895672
JOHN YOUNG
650.862.2122 · LIC. #02036387



2303 Cowper St, Palo Alto
STARTING AT \$6,995,000
MICHAEL DREYFUS
650.485.3476 · LIC. #01121795
NOELLE QUEEN
650.427.9211 · LIC. #01917593



60 Fernwood Dr, La Honda
OFFERED AT \$3,149,000
MARIAN BENNETT
650.678.1108 · LIC. #01463986

MORE LISTINGS AT GOLDENGATESIR.COM

Each office is independently owned and operated

Menlo Park Office
640 Oak Grove Ave

Palo Alto Office
728 Emerson St

Los Altos Office
195 S. San Antonio Rd

Woodside Office
2989 Woodside Rd

Redwood City Office
555 Middlefield Rd

San Carlos Office
1250 San Carlos Ave 101

Burlingame Office
360 Primrose Rd

Los Gatos Office
663 Blossom Hill Rd

OTHER OFFICES BELVEDERE-TIBURON · BERKELEY · DANVILLE · LAFAYETTE · MILL VALLEY · MONTCLAIR · NAPA · NOVATO · OAKLAND · ROSS VALLEY · SAN RAFAEL · SAUSALITO · STINSON BEACH

Local News

MENLO PARK | AHERTON | WOODSIDE | PORTOLA VALLEY



Courtesy U.S. House Office of Photography

Rep. Jackie Speier announced Tuesday that she will not seek reelection in 2022.

Jackie Speier's retirement fuels speculation about Democratic successor

Candidate field expected to include Sacramento politicians, county supervisor

By **Gennady Sheyner**

Jackie Speier's announcement on Tuesday that she will not seek another term in the U.S. Congress has created a rare political opportunity for elected officials throughout the 14th Congressional District, who seldom get a chance to run for an open seat.

But any speculation over who will seek to succeed Speier, D-San Francisco/San Mateo, a political icon who won her first election 41 years ago, hinges on a major wild card: The district that Speier has been representing is in the midst of being reshaped and its boundaries won't be known until late December. The redistricting

process, which could result in some would-be candidates falling outside the lines of the heavily Democratic district, is adding a layer of complexity to plans to find Speier's successor. While the U.S. Constitution allows candidates to run for a seat outside their district, pro-

See **SPEIER**, page 22

Menlo Park again mulls a ban on gas-powered leaf blowers

By **Kate Bradshaw**

Twenty-three years after Menlo Park voters halted a ban on gas-powered leaf blowers, the city is once again thinking of enacting one.

On Tuesday, Nov. 16, the Menlo Park City Council voted 4-0, with Councilwoman Jen Wolosin absent, to set up a study session to discuss the details of a gas-powered leaf blower ban, including how it should be implemented, how it could be enforced, and what staff resources it would take to do so.

In 1998, Menlo Park voters split 45% for and 55% against Measure E, a referendum asking whether the city should adopt a ban on gas-powered leaf blowers.

In contrast, other nearby communities have bans on gas-powered leaf blowers: Los Altos has had one since 1991, Palo Alto's ban on them in residential areas took effect in 2005, and Portola Valley banned them in 2019 with a two-year delay in enforcement. Portola Valley also offered a leaf blower trade-in program in which residents could bring

in their gas-powered leaf blowers to receive 40% of the cost of an electric blower, up to \$120.

As of August, some Portola Valley residents said they've noticed that the town seems noticeably quieter since the ban took effect in January. In Atherton, officials haven't gone for a ban, but the town is conducting a pilot project to use battery-powered leaf blowers in Holbrook-Palmer Park and on public streets.

Recent state legislation pushed

See **LEAF BLOWERS** page 10



Courtesy Daniel Ho, ABA Inc.

A rendering of Willow Commons' inner courtyard walking path.

Apartments for adults with disabilities proposed in Portola Valley

The 13 units would be located along Alpine Road near Roberts Market

By **Angela Swartz**

Several years back, longtime Portola Valley residents Jim and Patty White started to research where their daughter, Amy, who has Down syndrome, could live independently once she became an adult. They were struck by the lack of options.

With this in mind, the couple plans to bring a proposal to build 13 apartments for adults with disabilities at 4388 Alpine Road to the town's Architectural & Site Control Commission on Dec. 13.

The proposed project, estimated to cost between \$8 million and \$10 million, would be located in a commercial corridor known as the Nathorst Triangle. It's an area former Planning Commission member Betsy Crowder said two decades ago would be an ideal location for affordable housing.

The housing would only be available for adults with intellectual or developmental delays (I/DD), defined as differences that are usually present at birth and that uniquely affect the trajectory of the individual's physical, intellectual, and/or emotional development, according to the National Institutes of Health. It would also be designated for low-income individuals, rented to eligible residents for roughly

\$600 per month, according to the Whites.

"Our inspiration here is Amy; she opened the door for us to understand the challenges that families have," said Jim White, who's lived in town for 20 years. The Whites submitted an application to the town for the proposal early last month. "People are struggling to find permanent supportive housing," he said.

Up until June, Amy was in an East Coast boarding school for people with developmental delays. She is now renting a house in Portola Valley to continue to exercise independent skills, he said.

Finding affordable housing for the I/DD population is a "chronic problem," according to the Whites. San Mateo County has lost 11% of its licensed care facilities, while demand has grown 20% to 30% over the last six years (to a little over 300,000 people in the I/DD category), according to a presentation last week by Housing Choices, a group that helps people with developmental and other disabilities secure housing.

This housing could also count toward the town's significant increase in the number of units it must plan for in its 2023-31 Regional Housing Needs Allo-

See **WILLOW COMMONS** page 14

CRIME BRIEFS

Break-in breaks faucet, causing water damage to Atherton home

Someone reportedly broke into a home on the 400 block of Walsh Road in Atherton over the weekend, breaking a faucet in the process and causing “extensive water damage,” according to a Nov. 13 Atherton police news bulletin.

Sometime between Nov. 12 and 13, someone smashed a first floor rear window to break in. This is the 45th residential burglary in town this year, said Sgt. Anthony Kockler in an email.

Police didn’t yet know the value of goods taken. The home has security cameras, but police don’t yet have the photos to see what images were captured, Kockler said.

Police are reminding residents to lock their doors and set their security alarms. The Atherton Police Department offers free alarm monitoring, which includes dispatching officers when an alarm is activated.

Anyone who lives in the area of this burglary and saw or heard anything suspicious is asked to contact the Atherton Police Department at 650-688-6500.

— Angela Swartz

Man pleads no contest to firearm, vehicle and identity theft charges

A 34-year-old man from Oakland experiencing homelessness pleaded no contest to possessing a firearm, stealing a vehicle and identity theft after he was apprehended by Menlo Park police in August.

A resident on Lexington Drive in Menlo Park heard noise just after midnight on Aug. 31 and saw a man reaching into her unlocked Mazda, according to prosecutors.

She called 911 and after officers searched the area, they found a black backpack on her lawn with a loaded handgun next to it, as well as a still-warm Ford F-150 truck. After searching the neighborhood, they found the defendant, Jonathan Garrett Reelfs, in a Port-a-Potty. When confronted, he dropped a container of Ice Breakers candies, an identical pack of which was found at the abandoned backpack. He had a warrant out for his arrest and a plastic bag of coins that had been stolen from the Mazda. Police later found that the truck had been stolen and discovered documents with Reelfs’ name in the backpack, according to prosecutors.

He pleaded no contest to possessing a firearm as a felon and vehicle theft, as well as identity theft from a previous case, on the condition that three pending misdemeanor cases by the District Attorney be dismissed and that he spend no more than 16 months in state prison.

His case was continued to Dec. 16 for sentencing and he remains in custody on no-bail status.

— Kate Bradshaw

COMMUNITY BRIEFS



Courtesy Meta

From left: Belle Haven resident Rose Bickerstaff, Zaky Waller and Menlo Park Councilwoman Cecilia Taylor shovel dirt to signal the start of construction on Menlo Park’s new community center in Belle Haven, funded by Meta.

New community center in Belle Haven breaks ground

Menlo Park’s Meta-funded community center in Belle Haven broke ground amid shiny-shoveled fanfare on Saturday, Nov. 6.

See **COMMUNITY BRIEFS**, page 18

Established 1965

The **Almanac**

Serving Menlo Park,
Atherton, Portola Valley,
and Woodside for over 50 years

NEWSROOM

Editor

Andrea Gemmet (223-6537)

Assistant Editor

Julia Brown (223-6531)

Arts & Entertainment Editor

Heather Zimmerman (223-6515)

Staff Writers

Kate Bradshaw (223-6536)

Angela Swartz (223-6529)

Embarcadero Media Staff Writers

Sue Dremann (223-6518), Kevin Forestieri

(223-6535), Lloyd Lee (223-6526), Zoe

Morgan (223-6519), Gennady Sheyner

(223-6513), Leah Worthington (223-6533)

Contributors

Kate Daly, Maggie Mah

Special Sections Editor

Linda Taaffe (223-6511)

Chief Visual Journalist

Magali Gauthier (223-6530)

DESIGN & PRODUCTION

Design and Production Manager

Kristin Brown (223-6562)

Designers

Linda Atilano, Kevin Legnon,

Paul Llewellyn, Sam Olson,

Mary Watanabe, Doug Young

ADVERTISING

Vice President Sales and Marketing

Tom Zahiralis (223-6570)

Display Advertising Sales (223-6570)

Real Estate Manager

Neal Fine (223-6583)

Legal Advertising

Alicia Santillan (223-6578)

ADVERTISING SERVICES

Advertising Services Manager

Kevin Legarda (223-6597)

Sales & Production Coordinator

Diane Martin (223-6584)

The Almanac is published every Friday at

3525 Alameda De Las Pulgas, Menlo Park, CA 94025

■ **Newsroom:** (650) 223-6525

Newsroom Fax: (650) 223-7525

■ **Email news** and photos with captions to: Editor@AlmanacNews.com

■ **Email letters** to: Letters@AlmanacNews.com

■ **Advertising:** (650) 854-2626

Advertising Fax: (650) 223-7570

■ **Classified Advertising:** (650) 854-0858

■ **Submit Obituaries:** AlmanacNews.com/obituaries

The Almanac (ISSN 1097-3095 and USPS 459370) is published every Friday by Embarcadero Media, 3525 Alameda de las Pulgas, Menlo Park, CA 94025-6558. Periodicals Postage Paid at Menlo Park, CA and at additional mailing offices. Adjudicated a newspaper of general circulation for San Mateo County. The Almanac is delivered to homes in Menlo Park, Atherton, Portola Valley and Woodside. POSTMASTER: Send address changes to the Almanac, 3525 Alameda de las Pulgas, Menlo Park, CA 94025-6558. Copyright ©2021 by Embarcadero Media. All rights reserved. Reproduction without permission is strictly prohibited.

The Almanac is qualified by decree of the Superior Court of San Mateo County to publish public notices of a governmental and legal nature, as stated in Decree No. 147530, issued November 9, 1969. Subscriptions are \$60 for one year and \$100 for two years. Go to AlmanacNews.com/circulation.

To request delivery, or stop delivery, of The Almanac in zip code 94025, 94027, 94028 and the Woodside portion of 94062, call 854-2626.



HAS YOUR HOMEOWNERS INSURANCE BEEN CANCELLED OR INCREASED SIGNIFICANTLY?

- Home • Auto • Life

Call me to get covered today!



650.815.7068

Frank Hughes

Your Local Agent
CA License # 0G64028

CONTACT ME



FARMERS
INSURANCE

14740960

Avenidas wants that one in a million!

Avenidas welcomes you to nominate outstanding leaders who deserve to be considered for the **Avenidas Lifetimes of Achievement award**. Whether it is in education, science and technology, the arts, the environment or with non-profits, these are people who have truly made an impact in the community.

Nominees should be 65+ and live on the mid-Peninsula. You will find the nomination form for the Avenidas Lifetimes of Achievement Award at www.avenidas.org.



Contact mdavis@avenidas.org for more information.

The deadline for a complete nomination is November 30th.

Mail to Avenidas

450 Bryant Street, Palo Alto



Avenidas

Menlo Park inches closer to 'hypercompetitive' \$50 million grant to combat sea level rise

By Kate Bradshaw

In a bid seeking funding for a pricey project to protect the bayshore from sea level rise, the city of Menlo Park has teamed up with PG&E and Meta (formerly Facebook) to apply for a \$50 million grant from the U.S. Federal Emergency Management Agency (FEMA).

The grant is part of FEMA's new "Building Resilient Infrastructure and Communities" program, aimed at providing grants to help jurisdictions with projects to mitigate the threat of natural disasters and reduce the risk of injuries, loss of life, or damage to critical services and infrastructure, according to a project summary. The highly competitive federal grant program received 991 subapplications, 406 of which have

been selected for further review, according to an announcement on the FEMA website.

"The city (of Menlo Park) was the only project sponsor to be selected in this country" for further consideration at the maximum amount of \$50 million, said Public Works Director Nikki Nagaya.

The program, said Councilman Ray Mueller at the council's Nov. 9 meeting, is "hypercompetitive."

"To get a full allocation with our partners is tremendous," he added.

Councilwoman Jen Wolosin talked about the importance of a regional coordination to tackle sea level rise throughout the San Francisco Bay. Otherwise, she said, "sea level rise is a little bit like Whack-a-Mole. You fix it in one place and it pops up in

another."

The council also talked Nov. 9 about whether the city should move forward in signaling its commitment to lead the ambitious project should it be selected to receive the funds, and what that might mean for the city.

In a study session, members signaled support for the project, indicating support for the next legal steps to move forward with the possibility, such as signing a memorandum of understanding of what the city's commitments would be if selected for the grant, adding a provisional full-time employee for at least a three-year term to help lead the project, and researching additional funding sources to maintain a positive cash flow during the project, to start.

The city has joined forces with the San Francisquito Creek Joint



Michelle Le

A view of the PG&E station located along Bayfront Expressway. Menlo Park has teamed up with Meta and PG&E on an application for federal funding to secure the city's shoreline against sea level rise.

Powers Authority, Meta and PG&E to apply for the federal grant to secure a 3.7-mile section of the Peninsula shoreline in Menlo Park and East Palo Alto from sea level rise, including parts of Bayfront Expressway. It's part of the SAFER Bay project, an effort led by the creek joint powers authority to provide flood protection, restore ecosystems and offer recreation

along the Bay in East Palo Alto, Menlo Park and Palo Alto.

The entire SAFER Bay project is estimated to cost a whopping \$130 million, according to staff, while the part of the project under discussion is estimated at about \$67.7 million, according to FEMA.

The section of the shore-

See **FEMA GRANT**, page 12

Project could bring affordable homeownership to Belle Haven

Menlo Park council signals support for creating a community land trust

By Kate Bradshaw

Under a proposal by local nonprofit affordable housing developer MidPen Housing, the Menlo Park community might be able to offer 12 new for-sale townhomes for low-income households.

During a study session the Menlo Park City Council held Tuesday, Nov. 9, council members signaled support for the concept, asking for staff to bring back further proposals for approval in the near future, including dedicating \$200,000 to MidPen Housing to explore forming a community land trust,

and contributing \$3.4 million to support the construction of the proposed affordable townhomes.

MidPen Housing owns the property at 335 Pierce Road, in Menlo Park's Belle Haven neighborhood, which has one vacant parcel and one four-unit apartment building. It aims to redevelop a dozen townhomes on the property that can be affordable to low-income households in Belle Haven.

In the Belle Haven neighborhood, 57% of homes are renter-occupied, higher than the overall 40% percent of renter-occupied homes throughout San Mateo County, according to data from a

recent University of California at Berkeley study exploring Menlo Park's housing inventory.

The median household income in the neighborhood is \$58,274 while the median sale price of homes in the neighborhood is over \$1 million, indicating that homeownership is out of reach for many in the community, according to a staff report.

MidPen Housing proposes to create a rare homeownership opportunity for those low-income local households through the formation of a legal structure called a community land trust rooted in Belle Haven.

A community land trust is an

entity that controls the ownership of a property and is responsible for its stewardship, according to staff. These usually make homeownership more affordable because the homeowner is buying just the house, not the land that the property sits on.

The homeowners have a long-term lease on the land from the community land trust and agree to sell the home at a restricted price to keep it affordable in perpetuity, although they may be able to realize the appreciation from improvements they make while living in the house, according to Grounded Solutions Network, a Bay Area-based

housing policy nonprofit.

New state legislation offers a partial property tax exemption on community land trust properties, permitting homeowners within these trusts to pay property taxes on the improvements to the land but not the land itself, said Jan Lindenthal, chief real estate development officer for MidPen Housing Corporation.

An additional benefit of the community land trust approach is that the community retains the power to make decisions about the land itself, she said.

See **LAND TRUST**, page 12

Woodside's Measure A holds razor-thin lead of five votes

Results from Nov. 3 election to be certified Friday

By Angela Swartz

Measure A, an initiative to allow two sites in the Town Center area of Woodside to be considered for outdoor community gathering spaces, has a slim, five-vote lead (50.1%) in the latest results released on Nov. 12. Measure A requires a simple majority to pass.

The San Mateo County Elections Office reported Nov. 12 that 1,159 people voted yes on the measure, and 1,154 voted

no, tightening the already close race which had a 20-vote difference on election night. The county has just 50 votes left to count for the only two measures on the ballot, Measure A and the Menlo Park City School District's Measure B, according to the county's website. Measure B, a parcel tax, is still leading by a comfortable margin.

As of Monday, Nov. 15, there are only seven challenged ballots remaining for Measure A, said Jim Irizarry, assistant chief elections officer for the county.

Two are for having no signature and five are for "non-matching signature."

There are no other results to be released before the certification of election results, which is scheduled for Friday, Nov. 19 (after The Almanac's Wednesday afternoon press deadline), he said.

The last day to "cure" challenged ballots was Wednesday, Nov. 17. A challenged ballot is one with an issue that would prevent it from being counted, Irizarry said. Other than lateness, the vast majority of the time it's due to a signature that is missing or does not match



Magali Gauthier

A truck drives by a sign that reads "YES on Measure A" along Woodside Road in Woodside on Nov. 9.

county records, he said.

There is no provision in California law for an automatic recount in any election, Irizarry

said. Someone requesting a recount needs to file an appli-

See **MEASURE A**, page 12



Screenshot courtesy office of Rep. Anna Eshoo via Zoom

U.S. Congresswoman Anna Eshoo and Dr. Anthony Fauci, director of the National Institute of Allergy and Infectious Diseases, answered questions about COVID-19 during a virtual town hall meeting on Nov. 9.

Fauci: 'The country still has a long way to go to be safe'

In town hall meeting on COVID-19, president's chief medical adviser says Americans' actions could prevent winter surge

By Sue Dremann

Despite millions of vaccine doses administered across the country, the COVID-19 threat is still real, Dr. Anthony Fauci said during a virtual town hall meeting on Nov. 9.

The country still has 70,000 new infections per day; 62 million people ages 12 and older who are eligible to be vaccinated

still have not gotten their shots. The number doesn't include the latest eligible group of 5- to 11-year-olds, he said.

"We're vulnerable. We could get a surge unless we get more people vaccinated," said Fauci, director of the National Institute of Allergy and Infectious Diseases and chief medical adviser to President Joe Biden.

Fauci spoke of the ongoing threat as well as about vaccines,

new drugs on the horizon and the post-pandemic future during the hourlong event, which was hosted and moderated by Rep. Anna Eshoo, D-Palo Alto.

Eshoo, who chairs the House subcommittee on health, presented Fauci with audience questions about all sides of the pandemic, including so-called long COVID and childhood vaccinations.

With Thanksgiving fast

approaching, the first question on many minds was whether it is safe to gather inside.

"Clearly, if you are fully vaccinated, you can enjoy the holiday with your children, grandchildren and families," Fauci said.

But for people who have had just one shot out of the recommended two, the risk is "obviously present" although diminished, he said. People who have had just one shot should take a rapid COVID-19 test before they gather with loved ones to minimize infection, he said.

The country still has a long way to go to be safe. Among people of all ages, only 58% have been fully vaccinated; 67% have received one dose. Of those who are 12 and older, 68% are fully vaccinated and 79% have had only one dose, he said.

Not getting vaccinated is "inexcusable," Fauci said. The vaccines are a very effective tool to control the virus.

He recommended every eligible person get a booster shot. Studies show the booster shots greatly improve immunity against the virus. Protection from the initial series of shots begins to wane in the months afterward. People who have had COVID-19 infections and who later received the complete vac-

ination regimen should also still get the booster shot because of waning immunity and the possibility of being reinfected, he said.

Currently, the CDC recommends only people ages 65 and older or those who have medical conditions that make them vulnerable to serious illness can receive a booster shot. Drug-maker Pfizer submitted data to the Food and Drug Administration on Nov. 9 for an emergency use authorization of booster shots for anyone ages 18 and older, he noted.

Children ages 5 to 11 who are now receiving their initial vaccinations will also likely need booster shots, but studies on that are still underway, he said. Although vaccine doses for that age group are only one-third the dose of an adult vaccine, Fauci said that doesn't decrease the vaccine's efficacy. The children are receiving reduced doses because they are smaller, he said.

Eshoo noted that Lucile Packard Children's Hospital Stanford is among the facilities doing clinical trials using the Pfizer-BioNTech vaccine for children.

"The clinical trials done in

See **FAUCI**, page 20

Letter from Pets in Need staff alleges major errors led to puppy deaths

Staff asks board of directors to hold executive director accountable

By Sue Dremann

The deaths of seven puppies while they were being transported by the nonprofit Pets in Need on Aug. 2 were caused by multiple senseless violations of law and protocol, stated a letter written days later to the Pets in Need board of directors.

The letter from a group of staff members, as well as with the subsequent response from leaders of Pets in Need, raise questions about what protocols have been put in place since the deaths to prevent future tragedies.

The puppies, who were being brought to the Palo Alto Animal Shelter from the Central Valley, were packed into a pet crate that allegedly gave them no room to turn around, the letter claimed, and the animals were not given water, proper air conditioning and ventilation.

Pets in Need, which has a shelter in Redwood City and is contracted to operate Palo Alto's shelter, routinely rescues animals from other shelters. Charges of animal cruelty and neglect, which are misdemean-

ors, have been filed by the Santa Clara County District Attorney's Office against the three employees involved in the Aug. 2 incident.

The letter cited multiple failures that should have been known to the already seasoned staff, one of whom is an operations manager with 20 years of experience, according to her LinkedIn page.

Although the nonprofit owns two vans, one which is larger and has full air conditioning in the front and back, the staff took the smaller van outfitted only with air conditioning in the passenger area.

In a Nov. 11 email attributed to Executive Director Al Mollica, Pets in Need disputed the employee's claims that the van used in the Aug. 2 rescue didn't have temperature control.

"The van is a two-year-old Mercedes-Benz crew van that has been used hundreds of times to safely transport animals from all over Northern California, including the Central Valley. The air conditioning system is powerful and is designed to provide air-flow from the front of the van to the back."

Three managers went on the rescue run: Patty Santana, the Redwood City shelter operations manager; Maggie Evans, the behavior manager; and Ingrid Hartmann, human resources manager. The letter said it is unusual for a third person to attend a rescue run, let alone HR staff.

As a result, the animals, who should have been kept comfortable, cool and hydrated, traveled for more than four hours in 90-plus-degree heat, according to the letter.

"The transport team should have taken the larger van on a rescue run of this nature. Instead, the Van A was chosen because it contains two rows of seats, unlike Van B, which can accommodate only the driver and one passenger. This was the first of many avoidable mistakes made throughout the day," the letter said.

What's more, while shelter administrators planned and approved of picking up only 20 animals on the Aug. 2 rescue trip, the trio took eight additional animals, the letter noted.

The transport team was also aware that the puppies were in



Daniela Beltran B.

A dog in his outdoor cage at Pets In Needs' Palo Alto animal shelter on June 15. Fallout from the deaths of seven puppies in August has rocked the organization.

questionable health when they took them, the letter said, but "decided to take them anyway without contacting the Palo Alto medical director.

The letter also noted crowded conditions. The transport team packed a single, medium-sized crate with all seven puppies.

"Crates of this size have a maximum weight capacity of 40 lbs., but this crate held over 70 lbs. It provided no room for the puppies to lie down or even turn around without stepping on each other. This kennel was placed on the floor of the van, directly behind Ms. Hartmann's seat, not in a designated kennel space. The crate was shrouded in a towel to 'protect the other animals from potential disease,'

completely blocking what little airflow that was able to reach the back of the van and leaving the puppies with minimal ventilation," the letter said.

None of the 28 animals was given water or allowed time out of their kennels during the long drive, which violates the Guidelines for Standards of Care in Animal Shelters, the letter said. This was not the first time that a member of the transport team had been reminded that animals on rescue runs need water, a person close to Pets in Need told this news organization, speaking on the condition of anonymity.

The letter to the board also

See **PETS IN NEED**, page 18

Give back locally

with a gift to the Holiday Fund



Contributions to the Holiday Fund go directly to programs that benefit Peninsula residents. Last year, Almanac readers and foundations contributed \$260,000 from more than 170 donors for the 10 agencies that feed the hungry, house the homeless and provide numerous other services to those in need.

Contributions to the Holiday Fund will be matched, to the extent possible, by generous community organizations, foundations and individuals, including the Rotary Club of Menlo Park Foundation, the William and Flora Hewlett Foundation and the David and Lucile Packard Foundation. No administrative costs will be deducted from the gifts, which are tax-deductible as permitted by law.

All donations to the Holiday Fund will be shared equally among the 10 recipient agencies listed on this page.

Boys & Girls Clubs

Provides after-school academic support, enrichment, and mentoring for 1,800 low-income K-12 youth at nine locations across Menlo Park, East Palo Alto, and the North Fair Oaks neighborhood of Redwood City.

Ecumenical Hunger Program

Provides emergency food, clothing, household essentials, and sometimes financial assistance to families in need, regardless of religious preference, including Thanksgiving and Christmas baskets for more than 2,000 households.

Fair Oaks Community Center

This multi-service facility, serving the broader Redwood City community, provides assistance with child care, senior programs, citizenship and immigration, housing and employment, and crisis intervention. Programs are available in Spanish and English.

LifeMoves

Provides shelter/housing and supportive services across 18 sites in Silicon Valley and the Peninsula. Serves thousands of homeless families and individuals annually on their path back to permanent housing and self-sufficiency.

Literacy Partners — Menlo Park

Supports literacy programs and projects through fundraising and community awareness. Helps community members enhance their reading, writing and related skills and education to improve their economic, professional and personal wellbeing.

Ravenswood Family Health Center

Provides primary medical and preventive health care for all ages at its clinic in East Palo Alto. Of the more than 17,000 registered patients, most are low-income and uninsured and live in the ethnically diverse East Palo Alto, Belle Haven, and North Fair Oaks areas.

Second Harvest Food Bank

The largest collector and distributor of food on the Peninsula, Second Harvest Food Bank distributed 52 million pounds of food last year. It gathers donations from individuals and businesses and distributes food to more than 250,000 people each month through more than 770 agencies and distribution sites in San Mateo and Santa Clara counties.

St. Anthony's Padua Dining Room

Serves hundreds of hot meals six days a week to people in need who walk through the doors. Funded by voluntary contributions and community grants, St. Anthony's is the largest dining room for the needy between San Francisco and San Jose. It also offers take-home bags of food, as well as emergency food and clothing assistance.

StarVista

Serves more than 32,000 people throughout San Mateo County, including children, young people and families, with counseling, prevention, early intervention, education, and residential programs. StarVista also provides crisis intervention and suicide prevention services including a 24-hour suicide crisis hotline, an alcohol and drug helpline, and a parent support hotline.

Upward Scholars

Empowers low-income adults by providing them with financial support, tutoring, and other assistance so they can continue their education, get higher-paying jobs, and serve as role models and advocates for their children.

The organizations below provide major matching grants to the Holiday Fund.



www.siliconvalleycf.org



Rotary Club of Menlo Park

The William and Flora Hewlett Foundation

The David and Lucile Packard Foundation

The Almanac will make every effort to publish donor names for donations unless the donor checks the anonymous box. All donations will be acknowledged by mail.

DONATE ONLINE:
siliconvalleycf.org/
almanac-holiday-fund

Please consider donating online, which enables your gift to be processed immediately. The secure website is:
siliconvalleycf.org/almanac-holiday-fund

Enclosed is a check for \$ _____

Name _____

Business Name _____

Address _____

City/State/Zip _____

Email _____

Phone _____

I wish to designate my contribution as follows: (select one)

In my name as shown above

In the name of business above

OR: In honor of: In memory of: As a gift for:

(Name of person)



The Almanac

All donors and their gift amounts will be published in The Almanac unless the boxes below are checked.

I wish to contribute anonymously.

Please withhold the amount of my contribution.

Please make checks payable to:
Silicon Valley Community Foundation

Send coupon and check to:
02 – The Almanac Holiday Fund
c/o Silicon Valley Community Foundation
P.O. Box 45389
San Francisco, CA 94145

The Almanac Holiday Fund is a donor advised fund of Silicon Valley Community Foundation, a 501 (c) (3) charitable organization. A contribution to this fund allows your donation to be tax-deductible to the fullest extent of the law.

LEAF BLOWERS

continued from page 5

the issue further — on Oct. 9, Gov. Gavin Newsom signed a bill that will phase out the sale of gas-powered leaf blowers by 2024.

The legislation, authored by Menlo Park resident and state Assemblyman Marc Berman, calls on the California Air Resources Board to, by July 2022, create policies to prohibit the sale of new “small off-road engines” by 2024, a category that includes gas-powered leaf blowers, generators, pressure washers and chainsaws.

During Tuesday’s discussion, about six community members spoke in favor of enacting a ban while one person raised concerns. Those in favor of the ban included two pediatric physicians in the community who talked about the harmful health effects of leaf blowers.

David Axelrod, a pediatric cardiologist at Stanford Children’s Health, said there are decades of rigorous research that describe how environmental pollutants disproportionately impact children compared to adults. They breathe faster than adults, the volume of air they breathe compared to their body weight is larger, they are closer to the ground, where pollutants

are more dense, and their lungs, hearts and brains are more sensitive because they are still developing, he said.

Gas-powered leaf blowers emit harmful pollutants like benzene, formaldehyde and hydrocarbons, and propel hazardous particulates from the ground into the air, such as dust, dirt, brake lining powder from vehicles and herbicides. In addition, the noise levels they produce can increase blood pressure and stress hormone levels, he said.

“It’s our duty to protect our children, and one small step to put us on the right side of history,” he said.

Carlos Myers-Asencio, a 15-year-old Menlo Park resident, also supported the ban.

“Banning leaf blowers is low-hanging fruit, but its impacts are sure to be fruitful,” he said.

Kathleen Daly, who runs Cafe Zoe in the Willows neighborhood, said she agreed that leaf blowers are annoying, but raised concerns about the impacts of the ban on the service workers who are tasked with maintaining the yards of Menlo Park residents. Many gardeners were out of work during at least a portion of the pandemic, and asking them to spend a significant amount of money now to swap out their tools could pose a hardship, she said.

One of the significant questions with any ordinance banning gas-powered leaf blowers is how to enforce the ban. In Palo Alto, residents have complained for years about the lack of enforcement — a problem that became worse last year when budget cuts prompted the city to cut a code enforcement officer position.

Mayor Drew Combs said he anticipated that the ordinance could require a full-time code enforcement officer.

City Manager Starla Jerome Robinson brought up other possible concerns, some of which emerged while the city was enforcing a ban on gardening services during the early days of the COVID-19 pandemic. The enforcement question brings up social equity questions, such as whether gardeners or the households who hire them should be accountable for violations. The earlier gardening ban also set certain expectations in the community that the city has the resources to provide on-demand enforcement, which it does not, she said.

Council members seemed somewhat split over the timeline for passing an ordinance. Vice Mayor Betsy Nash pushed to have the ban passed quickly.

“There’s so much evidence out there that it is a health and noise



Veronica Weber

Gas-powered leaf blowers could be facing a citywide ban in Menlo Park.

hazard ... and I think that it’s past time that we do implement an ordinance,” she said.

“I’m supportive of the ban, but also believe we need a process that reaches out to affected stakeholders,” Councilman Ray Mueller said.

Councilwoman Cecilia Taylor said she supported the ordinance as well but wanted to ensure there would be adequate public outreach, including in Spanish, to make sure people are informed about the policy.

Environmental Quality Commissioner Leah Elkins said that she had tried to reach out to the Bay Area Gardeners Association

to gather feedback about the proposed ordinance but hadn’t heard back.

The council’s discussion of a possible leaf blower ban came up as part of a larger conversation about what the city’s Environmental Quality Commission should work on over the next year. Among its other priorities are to support the city’s work toward its Climate Action Plan, work on preserving the city’s urban tree canopy, and pursuing other “green and sustainable initiatives.” **A**

Email Staff Writer Kate Bradshaw at kbradshaw@almanacnews.com.

More Doctors. More Benefits. More Savings.



Essence Healthcare Medicare Advantage plans offer low monthly premiums, comprehensive coverage and valuable extras not found in traditional Medicare plans. And you’ll have access to the area’s most trusted doctors and specialists.



JOIN US for a free, no obligation meeting to learn more.

WEBINARS

| | | | | | |
|---------------------------------|---------------------------------|--------------------------------|--------------------------------|------------------------------|--------------------------------|
| Saturday, Nov. 20 10:00 a.m. | Saturday, Nov. 27 10:00 a.m. | Tuesday, Nov. 30 10:00 a.m. | Thursday, Dec. 2 10:00 a.m. | Friday, Dec. 3 10:00 a.m. | Saturday, Dec. 4 10:00 a.m. |
|---------------------------------|---------------------------------|--------------------------------|--------------------------------|------------------------------|--------------------------------|

RSVPs are required for in-person meetings. To register, or for a complete list of meetings: Visit www.EssenceHealthcare.com/Meet or Call 1-855-437-3867 (TTY: 711)*

A Healthy Tomorrow Starts Today.

*You can call from 8 a.m. to 8 p.m., seven days a week. You may reach a messaging service on weekends from April 1 through September 30 and holidays. Please leave a message, and your call will be returned the next business day. Essence Healthcare is an HMO plan with a Medicare contract. Enrollment in Essence Healthcare depends on contract renewal. For accommodations of persons with special needs at meetings, call 1-855-437-3867 (TTY: 711).

Y0027_22-449_C

TA_11.19

552 KELLOGG AVENUE, PALO ALTO



\$6,495,000 • 4 Bed • 3.5 Bath • 552kellogg.com



Carol Carnevale, Nicole Aron & James Steele Team
650.465.5958
DRE 00946687 | DRE 00952657 | DRE 01872027

135 SEALE AVENUE, PALO ALTO



\$5,988,000 • 6 Bed • 5 Bath • 135seale.com



Derk Brill
650.814.0478
DRE 01256035

145 HIGGINS AVENUE, LOS ALTOS



\$3,898,000 • 3 Bed • 2 Bath • 145higgins.com



Lynn Wilson Roberts and Anne Wilson Roberts
650.255.6987 | 650.279.5358
DRE 01814885 | DRE 02033636

461 ALGER DRIVE, PALO ALTO



\$3,308,000 • 3 Bed • 2 Bath • 461alger.com



Lynn Wilson Roberts and Anne Wilson Roberts
650.255.6987 | 650.279.5358
DRE 01814885 | DRE 02033636

1219 SEVIER AVENUE, MENLO PARK



\$1,249,000 • 3 Bed • 2 Bath • 1219Sevier.com

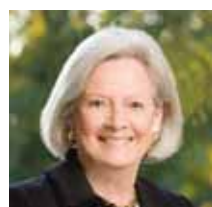


Carol Carnevale, Nicole Aron & James Steele
650.740.7954
DRE 00946687

200 LOWELL AVENUE, PALO ALTO



Price Upon Request • 7 Bed • 7.5 Bath • 200Lowell.com



Stephanie Hewitt
650.619.7885
DRE 00967034

LAND TRUST

continued from page 7

Eventually, the goal is for the trust to operate as a self-sustaining nonprofit, which could even provide resources such as counseling for prospective homeowners, she said.

“Homeownership is the most important wealth-building vehicle for families and one of the few paths to build generational wealth and financial security,” she wrote in a letter to city staff.

She added that they are particularly interested in developing affordable homeownership opportunities in Belle Haven because of the support Belle Haven residents had expressed for the idea in MidPen’s previous outreach efforts.

The new townhomes, which would contain two bedrooms and be targeted toward families, would be intended for first-time, low-income homebuyers, or households earning between 51% and 80% of the area median

income. For a household of four, that translates to an annual household income of between \$93,177 and \$146,350.

MidPen Housing would also take steps to offer the first right of refusal to the current tenants at the 335 Pierce Road apartments to purchase homes, or relocate to the new apartment development currently under construction by MidPen Housing along Willow Road, Lindenthal said.

The \$3.6 million in fund-

ing that MidPen Housing seeks comes from the city’s below-market-rate fund, which is generated from in lieu and impact fees from home and business-related development projects and is intended to be used to develop housing affordable to very low, low- and moderate-income households. MidPen and staff recommended expanding that intent to also include the formation of a community land trust.

In addition, the site would need to be rezoned from the current

R-3 designation, which permits 13 homes per acre, to the R-4-S designation, which permits 30 homes per acre.

Because of the work involved to form a community land trust, the entitlement and approval part of the project likely wouldn’t move forward until 2023 and construction likely wouldn’t begin until 2024, Lindenthal said. ■

Email Staff Writer Kate Bradshaw at kbradshaw@almanacnews.com.

MEASURE A

continued from page 7

within five days of the certification of the election. The requester bears all costs of the recount if the results do not change, he said.

The recount process cost can vary depending on selections made by the requester: whether it would be a machine or manual recount, the number of teams involved, and whether the requester stops the process at any point, Irizarry said. The county estimates a full manual recount with two teams would cost require a day and a half to accomplish, for a total estimated cost of \$6,000.

Measure A would amend current land use regulations that

limit two residentially zoned pieces of land adjacent to the Town Center, a town-owned complex along Woodside Road from Whiskey Hill Road to Roberts Market that includes government buildings and commercial businesses, and Cañada Corners at the Cañada Road intersection (owned by Roberts Market). Because the rules were established by ballot measures J and 1 in 1988 and 1989, only voters can overturn the restrictions that limit future development on the sites.

The measure would allow the property behind Cañada Corners to be outfitted with surface parking to accommodate permanent outdoor dining, trails and play structures, all of which are now prohibited. It would also allow for the possible con-

struction of a public building — an amphitheater or gazebo — for community events in the residentially zoned Town Center area on a portion of a 1.65-acre plot called Village Hill. Measure J, approved by the voters in 1988, prohibited development of commercial or office space on a then-vacant, town-owned parcel near where Town Hall is now located. It also required residential properties within and adjoining Town Center to remain in residential use unless commercial parking on those properties had been permitted prior to June 1, 1988.

Measure 1, approved by voters the following year, created an exception to Measure J’s requirement that residential parcels in Town Center remain in residen-

tial use. Upon its approval by the voters, residentially zoned parcels in the Woodside Road Whiskey Hill Road Parking Assessment District were authorized to be improved to provide access, parking and open space — as shown in the 1989 Town Center site plan — so long as at least 50% of the residential parcels were maintained in open space. Approval of Measure 1 allowed the town to construct Town Hall parking and access improvements which now serve Town Hall, commercial businesses in the Town Center and the public.

Measure A’s backers argued that its passage was necessary for outdoor dining to continue beyond the pandemic.

The Woodside Town Council’s state of emergency ordinance allows the town to waive the restaurants’ parking require-

ments that are part of a conditional use permit. Gov. Gavin Newsom issued an executive order last week that extends parts of his March 4, 2020, COVID-19 emergency proclamation through March 31, 2022. The town operates under the state umbrella.

The town must take action every 60 days to continue the state emergency on a local level, said Mayor Brian Dombkowski. Outdoor dining is likely to be extended (assuming the council continues to renew the 60-day resolutions) through March 2022, regardless of the outcome of Measure A.

When the emergency declaration ends, the town must once again enforce the parking requirements, he said. ■

Email Staff Writer Angela Swartz at aswartz@almanacnews.com.

Menlo Park Monthly Market Report
October 1, 2021 - October 31, 2021

11 COSTLY HOME INSPECTIONS PITFALLS
Free Report reveals what you need to know before you list your home for sale.
www.Rossetti11CostlyPitfalls.com

| TOP 10 SALES* | |
|--|---|
| 1. \$8,333,000 1150 Hobart Street | 2. \$8,200,000 1020 Hermosa Way |
| 3. \$7,750,000 1222 N Lemon Avenue | 4. \$7,650,000 1501 Bay Laurel Drive |
| 5. \$7,100,000 531 Grace Drive | 6. \$6,900,000 631 College Avenue |
| 7. \$5,950,000 935 Menlo Oaks Drive | 8. \$5,588,000 615 Woodland Avenue |
| 9. \$5,225,000 150 Felton Drive | 10. \$5,000,000 1100 Cotton Street |

| | | |
|--|--|--|
| ACTIVE LISTING Oct: 43 Sep: 47 -9% | AVERAGE SALES PRICE Oct: \$3,546,741 Sep: \$3,325,840 7% | AVERAGE SALES PRICE/SQ Ft Oct: \$1,499 Sep: \$1,434 5% |
| PENDING LISTING Oct: 42 Sep: 51 -18% | AVERAGE SOLD DAYS ON MARKET Oct: 19 Sep: 30 -37% | MONTHS OF INVENTORY Oct: 0.80 Sep: 1.30 -38% |
| SOLD LISTING Oct: 54 Sep: 36 50% | SALE/LIST PRICE Oct: 103.20% Sep: 104.90% -2% | 30 YEAR MORTGAGE RATE Oct: 3.24% Sep: 3.17% 2% |

*Source: MLS Listings for Single-Family Properties | Townhomes | Condos

FEMA GRANT

continued from page 7

line under discussion includes a portion near Meta’s original Menlo Park campus and PG&E’s Ravenswood substation, which provides power to customers from San Mateo to Palo Alto, according to a staff report. PG&E has offered to pay \$10 million and Meta has offered to pay \$7.8 million toward the project.

The proposed project would build a series of levees using “nature-based solutions” and include the habitat restoration of 550 acres of former salt ponds, according to the project summary. “The Menlo Park SAFER Bay project demonstrates how climate mitigation and adaptation can go hand in hand by utilizing nature-based solutions to protect critical electric and transportation infrastructure from sea level rise, which in

turn will support Menlo Park’s and neighboring communities’ efforts to meet their Climate Action Plans and decarbonization efforts,” wrote Lauren Swezey, sustainability and landscape project lead for Meta, in a letter supporting the project.

The proposed project is complex, large and expected to take about five years to design, get permits and build, according to staff. If Menlo Park is awarded the grant, the City Council should vote to either hire consultants or additional provisional staff to manage the project, city staff said.

Another challenge, according to city staff, is that FEMA reimburses the lead agency for expenses, which sometimes can take six months, so managing a positive cash flow while waiting for the project reimbursements to come in will likely take additional staff work to navigate.

The FEMA decision on whether Menlo Park will receive the grant is expected no sooner than January. From there, the likely earliest possible date for the project to be completed would be July 2027, according to staff. ■

Email Staff Writer Kate Bradshaw at kbradshaw@almanacnews.com.

Making A Move?

Sellers Start Here: RossettiMarketValue.com
Buyers Start here: RossettiHomeFinder.com


Gail Antoinette Rossetti
Founder | CEO | Broker
License #01179344

3525 Alameda De Las Pulgas Suite C Menlo Park, CA Phone: 650-854-4100

VERY REAL LOCAL NEWS

Join today:
SupportLocalJournalism.org

SUPPORT LOCAL JOURNALISM



*Wishing you good health
and happiness this holiday season
and throughout 2022*

Please join me in giving back
by donating to the

**BOYS AND GIRLS CLUB
OF THE PENINSULA**

bgcp.org

Golden
Gate

Sotheby's
INTERNATIONAL REALTY

MG | *mary gilles*
REAL ESTATE

Mary Gilles
650.814.0858
m.gilles@ggsir.com
MaryGillesRealEstate.com
License #01789710



SRI PARKLINE*continued from page 1*

running loop over a mile long, and bike pathways to connect the neighborhood to Burgess Park, the future Caltrain undercrossing at Middle Avenue and Menlo Park's downtown area. There would also be a bike and pedestrian path connecting Menlo Park's Caltrain station to Menlo-Atherton High School and Ringwood Avenue along Ravenswood Avenue.

"The idea is to create a new, massive, park-like amenity right in the core of downtown Menlo Park," Murray said.

Across the street from Menlo-Atherton High School, the developer plans to build a bike repair shop and juice bar, along with a new student drop-off area at Ravenswood Avenue and Middlefield Road.

One emphasis of the proposal is sustainability, and the developer proposes to work to attain certain LEED certifications, minimize carbon emissions, and meet the city's all-electric reach code requirements. To promote renewable energy, solar panels would be installed to generate power on-site, and to reduce water, recycled water options would be considered and efficient fixtures installed. The construction process would also focus on diverting waste from landfills.

To complete the rebuilding project, the developer proposes to remove a total of 529 of the existing 1,375 trees on the campus, including 198 heritage trees and 331 non-heritage trees, and plant 795 new trees, boosting the overall tree count to 1,641.

Lane Partners also proposes to build 400 new rental units in four buildings, including 19 rental townhomes near the existing Classics of Burgess housing development. Of those, 15%, or about 60, of the new homes would be affordable to low, very low and moderate-income households.

The proposal builds on community input collected over a series of outreach events held over the summer. One community that Lane Partners listened to closely was the residents at the Burgess Classics, 33 single-family homes that were formerly part of SRI property, according to Murray. In response to concerns from those residents, Lane Partners opted to place lower-density townhomes nearest that neighborhood.

Another modification made in response to neighbor concerns about traffic was to separate commercial traffic and have it exit onto Ravenswood Avenue and Middlefield Road rather than the more residential Laurel Street, according to Murray.

For the proposal to move for-

PROPOSED MASTER PLAN

Courtesy Lane Partners

A master plan map of the proposed Parkline project that would redevelop the 63-acre SRI campus in the heart of Menlo Park.

ward, the city needs to rezone the property to permit up to 40 homes per acre on that site. Currently, city zoning only permits 18.5 units per acre and sets the maximum building height at 35 feet. The proposal seeks to have

two, five-story buildings set back far away from the residential areas.

The next step for the project will be for the developer to receive staff input and then hold feedback sessions with Menlo

Park's Planning Commission and City Council, Murray said.

Go to menloparkline.com for more information. ▀

Email Staff Writer Kate Bradshaw at kbradshaw@almanacnews.com.

WILLOW COMMONS*continued from page 5*

cation (RHNA). This cycle, the town is tasked with designating 253 units of housing.

The project provides the town with some of the first deed-restricted, low or very low-income housing units, according to a Willow Commons project fact sheet.

Differences from Stanford Wedge project

Another Alpine Road project, often referred to as the "Stanford Wedge," has been a lightning rod for public debate on building and the risks it poses to fire safety and traffic. Stanford University's proposed 39 housing units, called Portola Terrace, would be located on part of 75 acres of university property that's currently undeveloped or used for horse boarding.

The Willow Commons project is very different, said Jim White. The site is adjacent to a commercial corridor on a "very accessible flat lot" within the moderate zone in the 2008 Moritz Fuel Hazard Map and has a "relatively lower risk to seismic activity," according to the proposal. The intended

residents, who for the most part would not have driver's licenses, would have multiple opportunities for employment within walking distance of their homes, the Whites note in their proposal. Woodside Priory School, The Sequoias, Roberts Market and the Portola Valley Elementary School District have written letters of support for the project. Residents have the potential to be a "loyal, local labor force," the proposal states.

"The needs for Stanford faculty are so different," Jim White said. "This project (the Willow Commons) is not a fire risk area. ... It will be the same height as the (current) building. It won't be visible from the streets. It will improve it from (an) old, and not well-maintained, building."

The residents

The housing would only be open to people eligible for supportive living services offered by California's network of regional centers.

The Golden Gate Regional Center, which supports San Mateo County residents, reports that over two-thirds of adults with I/DD in the county do not have independent housing. This

figure includes 100% of adults with I/DD who live in Portola Valley, a statistic that must be reported annually to the state for RHNA compliance.

The couple would create a nonprofit to run the supported living services and have hired an executive director, Brenda Bachechi, who has worked in special education for decades in San Mateo County.

Project design and timeline

The project is proposed on a 53,473-square-foot site that is zoned administrative/professional and uses the legal provisions of the state's density bonus and supportive housing laws to enable the creation of permanent and affordable supportive housing.

There is currently a small building on the site that formerly housed Linwood Real Estate and Langley Hill Quarry (a septic systems company) before the Whites acquired the land.

They would build 11 one-bedroom, one-bathroom apartment units spread over six buildings. Each would be less than 500 square feet in size. There would also be an attached accessory dwelling unit (ADU) of similar size and design, and a second,

detached two-bedroom, two-bathroom ADU of about 870 square feet. The small unit size also serves to accommodate 13 units on the site. They would each come with a washer and dryer.

The average building would be 18 feet tall. Town code dictates a height limit of 28 feet. The buildings would be set back about 75 feet from the street (similar to the existing Linwood building).

The ADUs are intended as homes for staff so the facility can "attract and retain quality support staff in a high cost of living area," according to the fact sheet.

"The specific needs of the intended population have guided the decisions around the components of the proposed supportive housing community," according to the fact sheet. "The size of the apartment units is intentionally small, to be large enough for residents to have a space that is all their own, but not so large that they would prefer spending all their time there rather than interacting with others in the community. This is important because research has shown many adults with I/DD who do not have adequate social interaction become isolated and

may develop depression."

The Whites expect a fast-tracked approval process (between 15 to 18 months) since the 13 units proposed are allowed "by-right" (without a conditional use permit) per the density bonus law. White said they hope to see residents move in as early as late summer or early fall 2023.

Residents would enter the Willow Commons through a common entrance to a building housing a staff office. This common building would include a kitchen, dining and lounge area where residents can prepare and share meals.

The architecture of Willow Commons aims to "preserve and enhance the native ecosystems and habitats of the site and the region," according to the proposal. The residences would be organized behind a main support building that fronts Alpine Road. The roofs would be outfitted with photovoltaic panels. There would also be 17 parking spaces on-site.

For more information on the project, go to willowcommons.com. ▀

Email Staff Writer Angela Swartz at aswartz@almanacnews.com.

DESIGNER RENOVATION IN WEST ATHERTON



279 CAMINO AL LAGO | ATHERTON | \$9,998,000 | 279CAMINOALLAGO.COM

5 bedrooms, office, study, 4 full baths, and 2 half-baths | ~5,530 total square feet | Tremendous outdoor entertaining areas
Pool and spa, large sport court | ~1.38 acres | Premier Atherton street | Excellent Las Lomas schools and private schools



**HUGH
CORNISH**
& ASSOCIATES

HughCornish.com

Ranked #1 Agent in SF Bay Area
Coldwell Banker, 2019, 2020

Ranked #78 in the United States
The Wall Street Journal, 2021

Over \$2.75 Billion in Sales



For a private showing of this extraordinary property, please contact:

HUGH CORNISH

650.619.6461
hcornish@cbnorcal.com
CaIRE#00912143

**STEPHANIE ELKINS
VAN LINGE**

650.400.2933
stephanie.elkins@cbnorcal.com
CaIRE#00897565



**GLOBAL
LUXURY.**

RESIDENTIAL BROKERAGE

The property information herein is derived from various sources that may include, but not be limited to, county records and the Multiple Listing Service, and it may include approximations. Although the information is believed to be accurate, it is not warranted and you should not rely upon it without personal verification. Real estate agents affiliated with Coldwell Banker Residential Brokerage are independent contractor agents and are not employees of the Company. ©2021 Coldwell Banker Residential Brokerage. All Rights Reserved. Coldwell Banker Residential Brokerage fully supports the principles of the Fair Housing Act and the Equal Opportunity Act. Owned by a subsidiary of NRT LLC. Coldwell Banker and the Coldwell Banker Logo are registered service marks owned by Coldwell Banker Real Estate LLC. CaIRE #01908304.



96 HEATHER DRIVE
ATHERTON



MAGNIFICENT LINDENWOOD ESTATE ON NEARLY AN ACRE

Private, gated grounds of nearly an acre envelop this majestic Lindenwood estate overflowing with impeccable details and opulent comforts. Evoking the feel of a five-star Tuscan resort, this grandiose residence enjoys several high-end appointments that wrap you in luxury from the moment you step inside, with elegant, grand-scale spaces offering ideal venues for either entertaining or extraordinary everyday living. Nearly 14,700 square feet of space includes a gourmet kitchen, a theater with 8 luxury recliner seats, and a fitness center with an adjacent recovery room featuring a sunken spa and sauna, plus a 2,000+ bottle wine cellar, pool house, and an oversized 6-car garage perfect for auto enthusiasts. Sanctuary awaits in the 8 extravagant bedrooms highlighted by the primary suite with a custom-built, Roman-style tub/shower as well as two massive walk-in closets. Plus, nearly all of the bedrooms offer a full en suite bathroom, and one bedroom easily converts into stylish office space. Incredible grounds offer seemingly endless options for outdoor enjoyment with a vast lawn, a saltwater pool with separate spa, a vineyard terrace, and an outdoor kitchen. And this incredible location is just moments to downtown Menlo Park, downtown Palo Alto, Stanford University, and top private institutions including Sacred Heart and Menlo School.

BY APPOINTMENT ONLY

www.96HeatherDR.com

Offered at \$13,488,000

Listed by the DeLeon Team • 2.5% Commission Paid to Buyer's Agent • Waived if DeLeon Buyer's Agent

Michael Repka, DRE #01854880 | 650.900.7000 | michael@deleonrealty.com

中文諮詢請聯繫 Audrey Sun, DRE #01933274 電話: 650.785.5822 | www.deleonrealty.com | DeLeon Realty, Inc. | DRE #01903224



199 MAPACHE DRIVE
PORTOLA VALLEY



SPECTACULAR CUSTOM ESTATE ON OVER 2.5 ACRES

Supreme luxury, ultimate privacy, and every conceivable modern amenity – this incredible Portola Valley estate in Westridge presents all of these qualities and so much more, set on a peaceful lot of over 2.5 sweeping acres. Just completed in 2020, and offering 5 bedrooms, 6.5 bathrooms, 2 offices, and almost 9,500 square feet of living space, including a beautiful guest house, this custom estate boasts stunning architectural details, green features including solar power and well irrigation, smart home technology, custom automated window treatments, and high-end materials and finishes. Soaring ceilings craft an airy ambiance, and walls of glass open completely for true California indoor/outdoor living. Entertain guests in expansive, elegant formal rooms, and craft delicious meals in the gourmet kitchen featuring a suite of top-of-the-line appliances, including two oversized refrigerators and freezers. Enjoy the convenience of multiple offices, a home fitness center, and an extraordinary theater that provides a spectacular in-home cinematic experience with 14 leather recliner seats and a full bar. Delight in fantastic grounds that feature a sparkling pool, a wood-burning fireplace with a gas starter, and a horse barn. Topping it all off is a location close to numerous nature preserves, major commute routes, and with access to acclaimed Portola Valley schools (buyer to verify eligibility).

OPEN HOUSE: SUNDAY 1:30 PM - 4:30 PM

www.199Mapache.com

Offered at \$14,988,000

Listed by the DeLeon Team • 2.5% Commission Paid to Buyer's Agent • Waived if DeLeon Buyer's Agent

Michael Repka, DRE #01854880 | 650.900.7000 | michael@deleonrealty.com

中文諮詢請聯繫 Audrey Sun, DRE #01933274 電話: 650.785.5822 | www.deleonrealty.com | DeLeon Realty, Inc. | DRE #01903224

COMMUNITY BRIEFS

continued from page 6

The new, multi-generational facility is set to replace the Onetta Harris Community Center and Senior Center previously located at 100 Terminal Ave.

According to a spokesperson from Meta (formerly Facebook), the development represents a \$45 million investment from the Menlo Park-headquartered company.

The facility is set to include a recreation center, fitness center and senior center, as well as after-school child care, a pool, a

library, a space for teens, a makerspace and community rooms. It is expected to open in 2023.

Residents petition to move planned soccer field at Flood Park

A petition to add property to Flood Park that would enable a planned soccer field to be relocated to a place that doesn't require removing heritage trees has garnered about 170 signatures as of Wednesday, Nov. 17.

The idea has been put forward by a group called Flood Park Tree Advocates 2021, which

describes itself on the Change.org website as "a small ad hoc group of local people concerned about preserving California native trees and ecosystems and who want to help the public become more aware of which trees are slated for removal in Flood Park."

The group would like for San Mateo County to acquire rights to use part of the Flood School property that currently belongs to the Ravenswood City School District in order to create new playing fields and recreational green space rather than move forward with an existing plan

to install a sports field along the park's Bay Road side, which would involving the removal of more trees.

"Extending the park to the former school site ... enables the preservation of the historic woodland of the park, along with the amenities currently in that area — the "nature-oriented" side of the park," say supporters of the idea.

The matter is urgent, they say, because the Flood School is planning to be leased for development at the end of November.

They have created a website

offering more information at floodpark.org.

Belle Haven Action offers outreach office hours

Anyone interested in learning more about health and wellness resources, or simply asking neighborhood leaders questions, can attend office hours hosted by Belle Haven Action at the Belle Haven School Library at 415 Ivy Drive from 11 a.m. to 1 p.m. on Saturdays in November.

— Kate Bradshaw

PETS IN NEED

continued from page 8

states information that differs from what the transport team and other staff told police during the investigation.

According to an Oct. 26 Palo Alto Police Department press release, the employees had said that none of the animals appeared distressed when they checked them during a stop for gas in Los Banos on the return to Palo Alto. But the puppies were apparently ill before and during the transport, the letter stated.

"The staff noted that the seven puppies had vomited and experienced diarrhea, yet nothing was done about this during the trip. These seven puppies died from neglect during transport: They were stiff to the touch but still hot, indicating they suffered fatal hyperthermia, also known as heat stroke. All 21 of the surviving animals were dehydrated and exhibiting signs of heat stroke as well," the letter said.

The deaths were reported after a Palo Alto Animal Control officer saw the bodies and opened a police report to investigate this incident.

The letter from staff requested three changes to help prevent future tragedies: Have trained professionals update the nonprofit's safety protocols; hold the transport team members accountable; and hold Executive Director Mollica accountable for failing to uphold the standards of Pets in Need in response to the situation.

Mollica said in the Nov. 11 email that "the Aug. 9 letter was directed to the board, and I did not respond to it. To help us move forward, and in recognition of the challenges during the pandemic, we are working closely with consultants to assist with an improved work-place environment, and we have instituted stern measures to address the events of Aug. 2."

The email didn't specify what changes have taken place.

A request for comment from Pets in Need Board President

Rob Kalman was not returned, and Pets in Need didn't provide a copy of the board's response to the letter to this news organization.

In an Aug. 10 email to staff obtained by the Weekly, however, Kalman said the board held an emergency meeting on Aug. 9 and voted unanimously to hire an outside investigator to discover and document all of the facts related to the incident.

Pets in Need was also asked to clarify many of the allegations made in the employees' letter, including against Mollica. The staff letter claimed Mollica was aware of other incidents in which animals had died during transport and had discussed this with staff individually. However, it claims that he told staff in emails and large meetings that no prior incidents had occurred.

The Nov. 11 email didn't explicitly deny that Mollica discussed previous deaths of animals with staff. However, it stated: "We have never experienced anything like this rescue run in our 56 years of service to the Bay Area community."

It also alleged that Mollica told police that "new" Guidelines for Standards of Care in Animal Shelters would be implemented, even though the nonprofit has used the protocols for years. It also alleged that he is suggesting worms or vaccine reactions, not negligence, caused the puppies' deaths, the letter said.

In the Nov. 11 email, Mollica stated, "Until we have necropsy results on the puppies, we can only speculate about what caused the animals to die. Pre-conditions, such as their care before they were retrieved, Parvo, vaccine reactions, and gastro-intestinal problems are all possible contributing factors to their death, according to our two experienced medical directors."

Mollica also said that the police investigation prevented Pets In Need from following "what would have been our existing unusual death investi-

See **PETS IN NEED**, page 19

**TOWN OF WOODSIDE
2955 WOODSIDE ROAD
WOODSIDE, CA 94062
PLANNING COMMISSION
DECEMBER 1, 2021 6:00 PM**

PURSUANT TO THE GOVERNOR'S EXECUTIVE ORDER N-29-20, AS AMENDED THROUGH ORDER N-08-21, PLANNING COMMISSION MEETINGS WILL BE HELD AS HYBRID MEETINGS WITH THE OPTION TO ATTEND BY TELECONFERENCE/VIDEO CONFERENCE OR IN PERSON. MEMBERS OF THE PUBLIC THAT WISH TO ATTEND AND/OR PARTICIPATE IN A MEETING MAY DO SO IN PERSON OR BY JOINING THE ZOOM MEETING [HTTPS://US02WEB.ZOOM.US/J/86068472736](https://us02web.zoom.us/j/86068472736) - PUBLIC COMMENTS WILL BE ACCEPTED BOTH IN PERSON AND VIA ZOOM MEETING. ANY EMAILS SENT TO SHARPER@WOODSIDETOWN.ORG WILL BE PROVIDED TO THE PLANNING COMMISSION PRIOR TO THE MEETING. IN THE EVENT THAT ANY MEMBER OF THE PLANNING COMMISSION PARTICIPATES IN A MEETING BY TELECONFERENCE OR VIDEO CONFERENCE, PURSUANT TO THE RALPH M. BROWN ACT, GOVERNMENT CODE SECTION 54953, ALL VOTES OF THE PLANNING COMMISSION SHALL BE BY ROLL CALL.

Join Zoom Meeting:

One tap mobile

+16699009128.86068472736
+12532158782.86068472736

Dial by your location

+1 669 900 9128
+1 253 215 8782
+1 346 248 7799
+1 301 715 8592
+1 312 626 6799
+1 646 558 8656

Meeting ID: 860 6847 2736

Weblink:

<https://us02web.zoom.us/j/86068472736>

Remote Public Comments:

Meeting participants are encouraged to submit public comments in writing in advance of the meeting. The following email will be monitored during the meeting and public comments received will be read into the record.

Email: sharper@woodsidetown.org

PUBLIC HEARING

1. Town-wide

MCAM2021-0002 and ZOAM2021-0005

Town of Woodside

Planner: Sage Schaan, Principal Planner

Review and Approval/Denial of a Resolution of Intention and Recommendation to the Town Council to Amend Chapters 151 (Site Development) (**MACAM2021-0002**) and 153 (Zoning) (**ZOAM2021-0005**) to bring the Woodside Municipal Code into compliance with recently enacted legislation (SB9, Atkins), which becomes effective on January 1, 2022. This legislation amended zoning/site development regulations State-wide by allowing ministerial approval of two residential units that are at least 800 square feet each, and up to four feet from side and rear property lines, on any single-family residential lot that meets certain objective requirements.

2. Town-wide

Town of Woodside

Planner: Jackie Young, Planning Director

Review and Approval/Denial of a Resolution of Intention and Recommendation to the Town Council to Adopt Objective Design Standards for SB9 projects to comply with recently enacted legislation (SB9, Atkins), which becomes effective on January 1, 2022. This legislation amended residential density in single-family zoning districts State-wide by allowing ministerial approval and objective design review only of certain two unit (attached or detached) residential projects. This Item is a continued discussion from the Planning Commission meeting of November 17, 2021.

THE APPLICATION MATERIALS ARE AVAILABLE FOR PUBLIC REVIEW BY CONTACTING SAGE SCHAAN AT SSCHAAN@WOODSIDETOWN.ORG OR JACKIE YOUNG AT JYOUNG@WOODSIDETOWN.ORG

ENROLLMENT*continued from page 1***Districts seeing declining enrollment pre-pandemic**

The K-8 Ravenswood City School District, which has schools in East Palo Alto and Menlo Park, had the region's "most severe" enrollment decline pre-pandemic, according to the San Mateo-based Enrollment Projection Consultants. District officials declined to comment when asked about enrollment figures.

Students enrolled at charters authorized by the district ballooned from 18% in the 2014-15 school year to 45.4% this school year. The district has seen a nearly 44% decline in non-charter school enrollment (1,501 students are enrolled) since the 2017-18 school year. There are 260 fewer students enrolled in the district's non-charter schools this fall.

Students are choosing the charter schools KIPP Valiant Community Prep and Aspire East Palo Alto, and the private Primary School in East Palo Alto. This means the district loses students and the government funding affiliated with them. The district is one of the few primarily state-funded districts on the Midpeninsula.

The Los Altos School District's enrollment has been declining for years, but during the pandemic that trend has accelerated. Last school year, the number of students attending district schools dropped by double digits (10.6%). This fall, there was another 6.5% decrease. In total, the district's enrollment has fallen from 3,999 students in 2019 to 3,344 today.

Superintendent Jeff Baier said some students moved out of the state or country, with others moving to other parts of California and some switching to private or charter schools. The pandemic has also made it more difficult to track where students end up, Baier said.

Because most Midpeninsula school districts are funded primarily with local property taxes, rather than based on the number of students, the enrollment decline doesn't translate into less money for these districts.

The district's numbers don't account for Bullis Charter School, which the state doesn't include in the Los Altos School District's enrollment total. Although Bullis is located within the district's boundaries, it is overseen by the Santa Clara County Office of Education.

Bullis' enrollment increased 5.2% last school year (from 1,039 students in 2019 to 1,093 in 2020). This year, it decreased 2.4% to 1,067 students. The charter school's enrollment is currently capped at 1,111 students under the terms of an agreement with the Los Altos School District.

Palo Alto Unified School District

The Palo Alto Unified School District saw its enrollment drop by nearly 1,000 students last school year over the prior fall, and then by another roughly 275 this fall. The school district currently has 10,476 pupils.

Before the pandemic, the district was seeing its numbers dip, but more slowly. Palo Alto saw 2.1% declines in enrollment in each of the two school years preceding the pandemic.

As with many districts, Palo Alto's enrollment plunged in the fall of 2020, declining 8.4%. Superintendent Don Austin said that although many districts expected to see a rebound this fall, he took a more conservative approach and thought it was likely to stay flat. Instead, enrollment dropped another 2.6%.

"I did not expect a big rebound, but yeah, it was a little bit of a surprise that we were down again," Austin said.

The decline in Palo Alto's student body is more pronounced in some areas of the district. Barron Park Elementary School now has fewer than 200 students. Ellen Fletcher Middle School has roughly 500, which is much lower than the 800 to 1,000 students at each of the district's other two middle schools. Both Fletcher and Barron Park sit in the southeast corner of the district.

Fletcher's shrinking population has prompted the district to consider running a lottery for the school next year, which would allow families in other parts of the district to apply

to have their children attend Fletcher. The district's board supported that possibility at a Nov. 16 board meeting.

Mountain View Whisman School District

Enrollment in the Mountain View Whisman School District dropped 6.5% last fall compared to the prior year, and then by another 5.1% this school year. In total, the district has gone from 5,082 students in 2019 to 4,511 this fall.

That's in contrast to the years before the pandemic, when the district's enrollment was holding relatively steady. The number of students was fluctuating only slightly year to year, with a net change of just two students between the fall of 2015 (5,084 students) and 2019 (5,082).

Superintendent Ayinde Rudolph said that besides families voluntarily leaving, the recent demolition of a number of apartment complexes in Mountain View may have forced other families to relocate.

"The pandemic was a perfect storm of a multitude of events that created a drop in enrollment," he said.

The district did see some students who withdrew last year come back this fall, even as the district's overall population continued to drop, Rudolph said.

Despite the current drop in enrollment, Mountain View Whisman officials continue to project a long-term increase in students as a result of planned housing growth in Mountain View. State housing targets call for the city to plan for 11,135 housing units between 2023 and 2031.

High school district outliers

The Mountain View Los Altos Union High School District is one of the few local school districts that was seeing its student body grow before the pandemic hit, but for the past two years, the district's enrollment has essentially flatlined.

Last fall, the district had just 15 more students than the year before, which works out to a 0.3% increase. In total, the student body sat at 4,563. This year, the district saw its enrollment drop for the first time in at least

eight years, with a 1% decrease to 4,516 students.

That's a marked difference from what MVLA was experiencing before COVID-19 disrupted education. In the five years from 2015 to 2019, the district's enrollment shot up by over 500 students.

Overall enrollment in the Sequoia Union High School District increased almost 1% from the 2019-20 (10,238 students) to 2020-21 (10,327 students) school years. Preliminary 2021-22 data shows enrollment decreased by about 2% (to 10,109 students) from last year.

Individual schools in the district, like Woodside and M-A, saw declining enrollment over the last two years.

Woodside High School has seen about an 11% dip in enrollment (1,752 students this school year) from the 2018-19 school year (1,964 students). This school year, 2,226 students are enrolled at Menlo-Atherton High School in Atherton, down from 2,368 last fall, an over 6% drop.

Small school districts

Portola Valley Elementary School District administrators formed a study group in response to their enrollment dip — PVSD has 477 students, down more than 13% from the fall of 2019-20, according to Superintendent Roberta Zarea.

The group will study enrollment trends in Portola Valley and comparable local school districts, facilities capacity, student demographics, performance data, how to attract and retain students and more. They will make recommendations to Zarea and the governing board.

Enrollment is down 2.3% from last school year, to 2,716 students, in the Menlo Park City School District. In September, Superintendent Erik Burmeister explained that some families re-enrolled last spring for the fall term, but ultimately dropped out. It's rare to have this level of attrition between re-enrollment and the beginning of the school year, he said.

"It's safe to say this is a temporary decline in student enrollment," he said. "Some folks don't want to come (to school)

in person until COVID is in the rearview mirror."

Las Lomas Elementary School District, which has one school in Menlo Park and one in Atherton, "lost families during the pandemic to people moving and a few learning pods, who ultimately returned," said Superintendent Beth Polito in an email. The Las Lomas Elementary School District has 1,099 students enrolled this year, down about 9% from the fall of 2019 (1,208 students).

"A portion of (the) continued enrollment decline is the loss of international families who largely worked/studied at Stanford (University)," she noted.

The one-school Woodside Elementary School District has 365 students. Enrollment is down almost 11% from the 2018-19 school year.

Applications rise at local private schools

Forbes reported last June that the pandemic bolstered private school enrollment when parents saw how differently private schools handled learning at the onset of the pandemic.

Although some local elementary-aged students last fall returned to classrooms, at least on a hybrid basis, many public high school students did not. On the other hand, many private schools resumed full-time in-person learning during the last school year.

"The pandemic revealed a view behind the 'school system' curtain, which promulgated some families to move and to change education paths," said Karen Aronian, a parenting and education expert, in an email. "The whiplash turnstile of remote, hybrid, in-school, quarantine, and repeat has left public schools, their students, and communities in a tailspin of logistical protocols and uncertainties."

Menlo School in Atherton was open for in-person learning sooner than the comprehensive high schools.

The private school, which serves sixth through 12th grade students, has "seen an uptick in admissions interest since the pandemic started," said Alex Perez,

See **ENROLLMENT**, page 20

PETS IN NEED*continued from page 18*

gation protocols."

No one has been disciplined, a person close to the nonprofit told this news organization. In fact, Santana, who was shelter operations manager for one of the locations, since the incident has been made operations manager for both Palo Alto and Redwood City locations, the person said. Pets in Need has confirmed

that Santana currently heads operations for both shelters but has not addressed whether she was given expanded duties after the Aug. 2 incident.

In his Nov. 11 email, Mollica said that Santana and Hartmann remain employees; Evans chose to leave the organization.

On Nov. 10, the organization provided a statement, which read in part: "During the past three months, Pets In Need has reviewed and assessed the events

that transpired during and after the rescue run that we made on Aug. 2. Our staff and board of directors have been reviewing information regularly and we have been as forthcoming as possible." Specifically, we are:

- Cooperating with the Palo Alto Police Department's ongoing investigation;
- Supporting our employees involved in this matter, including providing them with legal counsel and other support as

necessary;

- Continuing our own internal review processes to ensure that we remain good stewards of the faith placed in us.

"We are committed to maintaining the confidence that Palo Alto residents have placed in Pets In Need by continuing to meet the needs of the community."

On Monday, Nov. 15, Pets in Need announced in a fiery letter that it was ending its contract for

animal services with the city of Palo Alto, alleging the city has breached its agreement regarding the condition of kennels at its facility.

The organization said it would continue to serve Palo Alto, Los Altos and Los Altos Hills residents until the contract expired in a year. The Redwood City facility and services would remain unchanged. ■

Email Sue Dremann at sdremann@paweekly.com.

FAUCI

continued from page 8

children are quite gratifying," Fauci said.

In 5- to-11-year-olds, it is 91% effective in preventing symptomatic disease. In children ages 12 to 15, the efficacy is close to 100%. In both age groups, the safety profile is also high, he said.

Trials are also underway for two younger age groups: children ages 2 to 5 years old and those ages six months to 2 years. The data will likely be available in the first quarter of 2022, he said.

Many people are concerned about what the government is doing about "long COVID," the mysterious syndrome that causes some people to remain sick with heart, lung and neurological problems, among other issues, for many months after their initial COVID-19 infection. When the House subcommittee on health held hearings on long COVID, patients said they couldn't work or attend school because of the debilitating effects, Eshoo noted.

"Patients that testified were deeply frustrated. None of the doctors came up with a diagno-

sis that (their symptoms) could be long COVID," she said.

Fauci said \$1.15 billion has been dedicated to the National Institutes of Health to study long COVID and ways to recognize, intervene or prevent the syndrome after a COVID-19 infection. An estimated 10% to 30% of patients have persistent symptoms that last months or longer, including debilitating fatigue, tachycardia (a heart condition) and brain fog, he said.

The future of COVID-19

Fauci also touched on poten-

tial societal changes from COVID-19. It's likely some people will continue to voluntarily wear masks long after the pandemic is over, he said. For some, it may become the "new normal" during the winter months. Many people have noticed a marked decrease in influenza cases last winter and may think it's a good idea to continue wearing masks during the winter flu and cold season, he said.

Buildings, shops and restaurants are also likely to be more attentive to good air ventilation, which will probably become part of building codes, he said.

On the drug front, COVID-19 has kickstarted research into antiviral medications. Merck's new oral medication, molnupiravir, in clinical trials diminished the likelihood of hospitalization and death among COVID-19 patients if given in the early course of the infection. The United Kingdom's medicine regulator approved its use on Nov. 4.

Pfizer announced that research on its promising oral drug called paxlovid, a protease inhibitor, showed 89% efficacy in preventing hospitalization and death from COVID-19 when given within three to five days of the initial symptoms, he said. The National Institutes of Health has also invested \$3.2 billion in antiviral drugs to prevent the progression of the disease, Fauci said.

Eshoo called these developments "a blockbuster."

Asked what one piece of legislation he would like to write to change society, Fauci said

he wouldn't rely on legislation. Funding for research and development and to rebuild the country's decimated public health system would go a long way to securing a safer future, he said.

But he did note one desirable change.

"I would love to change the divisiveness in our society. The common enemy is the virus and not each other," he said.

He noted that other countries, notably England, have again seen recent spikes in their COVID-19 cases because they pulled back on precautions such as mask requirements and they didn't have children vaccinated. Cases surged when the cold weather started and people began indoor activities. In countries where cases went up, they'd also pulled back on the vaccine push, he said.

"Here, it depends entirely on what we do" to prevent another surge this winter in the U.S., Fauci said. He encouraged anyone who was vaccinated six or more months ago to get a booster shot and those who haven't yet been vaccinated to receive their shots as soon as they can.

The big question is how to talk to people who are misinformed about the pandemic and vaccines, Eshoo said.

"Many people have valid questions that have never been answered. There's a lot of disinformation and misinformation," Fauci said, distinguishing between deliberate falsehoods and mistaken or inaccurate information.

"Be patient; don't be accusatory," he said. ■



**TOWN OF PORTOLA VALLEY
NOTICE OF APPLICATION FOR CONDITIONAL
USE PERMIT AND MASTER PLAN AMENDMENT
PLANNING COMMISSION HEARING**

NOTICE IS HEREBY GIVEN that the Planning Commission of the Town of Portola Valley will hold a public hearing, via teleconference*, on **Wednesday, December 1, 2021 at 7:00 p.m.** on the following:

AMENDMENTS TO AN EXISTING CONDITIONAL USE PERMIT (X7D-30) AND MASTER PLAN TO: (1) PERMANENTLY INSTALL EXISTING MODULAR BUILDINGS, (2) INCREASE THE MAXIMUM NUMBER OF STUDENTS, TEACHERS, AND SUPPORT STAFF, AND (3) INCREASE THE MAXIMUM NUMBER OF ON-SITE PARKING SPACES; 302 PORTOLA ROAD (WOODSIDE PRIORY SCHOOL); APN# 079- 053-320; FILE # PLN_USE01-2019; PURSUANT TO PORTOLA VALLEY MUNICIPAL CODE CHAPTER 18.72 – CONDITIONAL USE PERMITS.

This project has been determined to be exempt from the provisions of the California Environmental Quality Act (CEQA) per CEQA Guidelines Section 15314, which exempts minor additions within existing school grounds where the addition does not increase original student capacity by more than 25% or ten classrooms, whichever is less. The addition of portable classrooms is included in this exemption.

HOW TO JOIN MEETING:

| | |
|---|--|
| <p>VIA ZOOM WEBSITE / APP Visit Zoom.com or Zoom app, click "Join Meeting" Enter Meeting ID: 837 5009 3463 Enter Passcode: 554370</p> | <p>VIA TELEPHONE 1-669-900-6833 Local 1-888-788-0099 Toll-free Enter Meeting ID: 837 5009 3463 Enter Passcode: 554370 <i>*(star symbol)9 = raise hand function</i></p> |
|---|--|

Public Hearings provide the general public and interested parties an opportunity to provide testimony on these items. If you challenge a proposed action(s) in court, you may be limited to raising only those issues you or someone else raised at a public hearing(s) described above, or in written correspondence delivered to the Town of Portola Valley at, or prior to, the public hearing(s).

Meeting participants are encouraged to submit public comments in writing in advance of the meeting. Please send an email to Dylan Parker, Assistant Planner at dparker@portolavalley.net by 12:00 PM on the day of the meeting. All comments received by that time will be transmitted to the Planning Commission prior to the meeting. All received questions and comments will be included in the public record. Members of the public can ask questions/provide comments using the "raise your hand" feature in the Zoom platform (*9 for telephone).

For more project information, please visit: <https://www.portolavalley.net/departments/planning-building-department/development-projects>. The agenda and staff report will be posted on the Town's website by 5:00PM the Friday prior to the meeting at :<https://www.portolavalley.net/town-government/planning-commission/minutes-and-agendas>.

Dated: November 19, 2021

Laura Russell, Planning & Building Director

* **Remote Meeting Covid-19 Advisory:** On September 16, the Governor signed AB 361, amending the Ralph M. Brown Act (Brown Act) to allow legislative bodies to continue to meet virtually during the present public health emergency. AB 361 is an urgency bill which goes into effect on October 1, 2021. The bill extends the teleconference procedures authorized in Executive Order N-29-20, which expired on September 30, 2021, during the current COVID-19 pandemic and allows future teleconference procedures under limited circumstances defined in the bill. Portola Valley Town Council and commission and committee public meetings are being conducted electronically to prevent imminent risks to the health or safety of attendees. The meeting is not available for in-person attendance. Members of the public may attend the meeting by video or phone linked in this agenda.

ENROLLMENT

continued from page 19

its director of media relations. Menlo has seen a 10% increase in applications over the last two years, he noted. The school has 795 students enrolled, according to its website.

"It's a record year for us," he said. "We have certainly seen greater demand from families who are seeking an independent school education."

Amory Healy, a sophomore at Menlo School, transferred from Palo Alto High School this school year, in part because she didn't feel like her public high school had the resources available to support her.

"At Paly, there were around 30 people in each class, and many teachers were so busy that there wasn't really time for students to reach out and get extra help," she said. "I think as well with how competitive college admissions are, having a school that gives easy opportunities to obtain leadership opportunities and provides great college counselors is a very popu-

lar plus side of private schools."

Trinity School on Sand Hill Road in Menlo Park has seen a 36% increase in applications since the pandemic hit, said Kirk W. Gossman, director of admission.

The Episcopal school has seen a significant increase in applications across the board. It's also seen an increased number of transfer requests from public school families for this school year.

"We thought these kids may return to the public (school) sector once those schools reopened but instead, they stayed and brought siblings to join them," he said in an email.

The number of applications to Pinewood School, which has three campuses in Los Altos, has increased 20% across grades K-12, said Lisa Longbottom, director of admissions, in an email. The school enrolls 600 students. ■

*Email Staff Writers
Angela Swartz at aswartz@almanacnews.com and
Zoe Morgan at zmorgan@paweekly.com.*

WHY SUPPORT LOCAL JOURNALISM?



Our subscribing members say it best...

“ We will definitely resubscribe and up our amount. You do an essential and superb job in really being ‘the glue’ of the mid-Peninsula. Special appreciation to your leader Bill Johnson, who has spent his life making this area and our lives better. ”

- Linda and Sid L.

Will you join the thousands of others supporting local journalism?

Now's your moment to step up when we need you the most.

Subscribe now at AlmanacNews.com/join

The Almanac

You can also subscribe for one year by mailing a check for \$120 (\$60 for seniors and students) to us at 450 Cambridge Ave., Palo Alto 94306.

The Almanac
Online

SPEIER

continued from page 5

vided they live in the state, the shift could deter candidates concerned about being perceived as outsiders by the district's constituents.

The draft map that the California Citizens Redistricting Commission released last week shows shifts in the northern and southern portions of Speier's district, which would no longer include the spacious coastal area south of Half Moon Bay and east of Woodside. Those cities would now fall into the new District 18, which is represented by Rep. Anna Eshoo, D-Palo Alto. A portion of Redwood City would also shift from District 14 to District 18, an adjustment that could deter political aspirants from the city to vie for Speier's seat. The same applies to East Palo Alto, which is currently in Speier's district but which would be in Eshoo's under the draft map, which is subject to further adjustments before its expected adoption in late December.

The portion of San Francisco that is part of District 14 would also shift, moving from the western neighborhoods of Sunset and Parkside to the Ingleside and Excelsior neighborhoods in the south and southeastern sections of the city.

But even despite these uncertainties, the race to succeed Speier is expected to have no shortage of candidates, numerous elected Democrats who were interviewed by this news organization predicted Tuesday.

"I think there will be a big scramble," said Jerry Hill, who represented the Midpeninsula in the state Assembly and the state Senate between 2008 and 2020 and who served as a San Mateo council member and a county supervisor before then. "A lot of people will be running, certainly, because of the fact that this is a once-in-a-generation event."

Assembly member Kevin Mullin,

D-South San Francisco, who has been representing the northern portion of San Mateo County in Sacramento since 2012, is expected to be the prominent candidate should he choose to enter the race, according to Hill and other current and former elected officials. Mullin currently serves as speaker pro tempore in the Assembly, the second-highest position in the Legislature's lower chamber. He won 75% of the votes in his most recent reelection effort, in 2020, and his political resume includes a stint as district director for Speier during her days as a state senator.

In a Tuesday statement, Mullin called Speier an "icon and a legendary figure in San Mateo County and California legislative and political history." And as her district director, he said he "was awed by her ability to stand up to powerful interests regardless of potential political consequences."

"It was the embodiment of integrity, with a fidelity to the public interest above all other considerations," Mullin said.

On Wednesday, Mullin confirmed what many have suspected with a tweet: "With the announcement by my mentor, Congresswoman Jackie Speier that she will be retiring after a legendary career in both the CA State Legislature and U.S. Congress, I am seriously considering a campaign to succeed her in the United States House of Representatives."

State Sen. Josh Becker, a Menlo Park resident with a proven record of winning in San Mateo County, is also viewed as a possible candidate for Speier's seat, according to Hill and other Democrats who spoke with this news organization. His senatorial district covers much of Speier's turf, though it's not clear whether his hometown will fall under her congressional district under the new maps. Currently, Speier represents the Belle Haven neighborhood in Menlo Park, while Eshoo represents the remainder of

the city. The draft map currently under consideration would shift Belle Haven to Eshoo's district.

Becker, who was elected to the Senate in 2020 and who has strongly advocated for climate change legislation, would not confirm Tuesday whether he will seek Speier's congressional seat, which candidates are allowed to do even if they don't reside in the district. In a statement Tuesday, he called Speier a "true superhero" who has "done so much for the people of the Peninsula, our state and our country." He did not, however, respond to an inquiry about the political implications of her decision not to seek reelection.

"That should be our focus today: honoring Jackie for all she has accomplished. Her legacy is tremendous at every level of government," Becker said in a statement.

In a video shared on social media Tuesday announcing her decision not to seek reelection, Speier recalled being shot five times at the Jonestown massacre in Guyana in 1978 while working as a staffer for U.S. Rep. Leo Ryan, who was fatally shot on the trip to investigate Jim Jones and the People's Temple, a cult that had previously been based in his Peninsula congressional district.

Speier said her career in public office has been "a remarkable journey that has surpassed my wildest dreams," adding that it was "time to be more than a weekend wife, mother and friend."

Palo Alto Vice Mayor Pat Burt was among those who cited Mullin and Becker as the two most prominent potential contenders in San Mateo County, though he was quick to note that neither has declared his intention to run.

"There are a few real top-tier folks currently in San Mateo County and none are yet indicating whether they are open to pursuing this spot," Burt said. "I think they're both exceptionally capable."

Assembly member Marc Berman, whose district includes Menlo Park, Palo Alto and Mountain View, said he is not considering a run for Speier's seat because he does not live in her congressional district (notwithstanding the fact that this is allowed by law). He predicted, however, that there will be no shortage of candidates.

"It's not every day, it's not every year, it's not every decade that a seat opens up on the Peninsula," Berman said.

Berman declined to speculate about who will vie for seats but noted that any successful candidate has to have a demonstrated ability to build relationships across the dozens of small communities that make up San Mateo County. Unlike Santa Clara County, which is dominated by San Jose, and San Francisco, which is both a city and a county, San Mateo County doesn't have a clearly established power base.

"I think San Mateo County is a unique place," Berman said. "It's a lot of small cities — there is not one big city that sucks it all up. So it has to be someone who has developed relationships in all

those communities, someone who has shown an ability to get along well with colleagues."

While the decentralized nature of San Mateo County makes it hard for local mayors and council members to win broad political support, the county's composition also gives a natural advantage to members of the San Mateo County Board of Supervisors, who benefit from a broader geographical reach and greater name recognition (the advantage is somewhat mitigated by the fact that the county has district elections, which limit each supervisor's political base to their specific district). Speier herself served as a county supervisor between 1980 and 1986, before she began her 20-year stint in Sacramento.

Several political veterans who spoke to this news organization thus see David Canepa, president of the Board of Supervisors, as a potential candidate for Speier's seat. William Silverfarb, Canepa's policy aide, did not respond to this news organization's inquiry about Canepa's possible candidacy, though he told the San Francisco Chronicle on Tuesday that Canepa is "definitely considering running for this seat."

Another name that has come up in interviews is that of Redwood City Vice Mayor Giselle Hale, who did not respond to an inquiry about her potential candidacy.

The race is expected to start taking shape relatively quickly, given that California's primary election is set for June 7. On Tuesday, politicians throughout the region who had served with Speier in Sacramento or Washington, D.C., lauded her legacy as a legislator. Hill, whose term in Sacramento and political constituency both overlapped with Speier's, said he was particularly struck by her commitment to the people of her district. He said he constantly runs into people around town who have stories about Speier helping them out.

"Her constituents always feel a strong comfort level and confidence in her leadership," Hill said. "You can't say that about a lot of people."

Burt called Speier "a courageous person in both Congress and in her personal life" and lauded her "great compassion in general and a great commitment to her district." Santa Clara County Supervisor Joe Simitian, who as a former state senator also represented a large swath of San Mateo County, called Speier a "first-rate legislator," while Belmont Mayor Charles Stone said she was a "legend in her own time."

"She is a woman who has done more for the Peninsula than most people could do in 10 generations. Her story is one of tragedy and triumph, and I'm incredibly grateful to her for her service in San Mateo County," Stone said.

Staff Writer Kate Bradshaw and Bay City News Service contributed to this report. ■

Email Staff Writer Gennady Sheyner at gsheyner@paweekly.com.

THE ALMANAC OPEN HOMES

LOS ALTOS HILLS

| | |
|------------------------------|--------------------|
| 24250 Dawnridge Drive | \$3,200,000 |
| Sun 1:30-4:30 | 3BD/2.5BA |
| Compass | 650-465-5958 |
| 11665 Dawson Drive | \$4,488,000 |
| Sat 1:30-4:30 | 4BD/3.5BA |
| DeLeon Realty | 650-900-7000 |

MENLO PARK

| | |
|-------------------------------|--------------------|
| 1219 Sevier Avenue | \$1,249,000 |
| Sat/Sun 1:30-4:30 | 3BD/2BA |
| Compass | 650-465-5958 |
| 2415 Sharon Oaks Drive | \$2,050,000 |
| Sun 1:30-4:30 | 3BD/2.5BA |
| DeLeon Realty | 650-669-8088 |
| 1360 Cloud Avenue | \$3,100,000 |
| Sat/Sun 1:30-4:30 | 4BD/3BA |
| DeLeon Realty | 650-669-8088 |
| 410 8th Avenue | \$1,825,000 |
| Sat 1:30-4:30 | 5BD/3.5BA |
| DeLeon Realty | 650-669-8088 |

MOUNTAIN VIEW

| | |
|------------------------------|--------------------|
| 1228 Miramonte Avenue | \$2,295,000 |
| Sun 1:30-4:30 | 3BD/2BA |
| Compass | 650-814-0478 |

PALO ALTO

| | |
|-----------------------------|--------------------|
| 2062 Channing Avenue | \$3,200,000 |
| Sun 1:30-4:30 | 3BD/2.5BA |
| Compass | 650-465-5958 |

PALO ALTO

| | |
|-------------------------------|--------------------|
| 135 Seale Avenue | \$5,988,000 |
| Sun 1:30-4:30 | 6BD/5BA |
| Compass | 650-814-0478 |
| 1420 University Avenue | \$8,988,000 |
| Sat 1:30-4:30 | 6BD/7.5BA |
| DeLeon Realty | 650-900-7000 |

PORTOLA VALLEY

| | |
|----------------------------|---------------------|
| 199 Mapache Drive | \$14,988,000 |
| Sun 1:30-4:30 | 5BD/6.5BA |
| DeLeon Realty | 650-900-7000 |
| 835 Westridge Drive | \$8,988,000 |
| Sun 1:30-4:30 | 5BD/7.5BA |
| DeLeon Realty | 650-900-7000 |

SAN MATEO

| | |
|-----------------------------|-----------------------|
| 651 Port Dr #203 (C) | Call for price |
| Sat/Sun 1:30-4:30 | 1BD/1BA |
| JLee Realty | 650-857-1000 |

SUNNYVALE

| | |
|-----------------------------|--------------------|
| 859 Oracle Oak Place | \$1,800,000 |
| Sat/Sun 1:00-4:00 | 4BD/2.5BA |
| Coldwell Banker | 650-400-2918 |

WOODSIDE

| | |
|-------------------------|--------------------|
| 99 Oak Haven Way | \$4,488,000 |
| Sun 1:30-4:30 | 4BD/3.5BA |
| DeLeon Realty | 650-900-7000 |

Legend: Condo (C), Townhome (T).

Agents: submit open homes at AlmanacNews.com/real_estate

VERY REAL LOCAL NEWS

Print or online subscription starts at only \$5 /month
Visit: AlmanacNews.com/join

#PressOn

SUPPORT LOCAL JOURNALISM

Holiday Fund demonstrates the power of local giving

By Nicole Taylor

GUEST OPINION

The past year has been a time of immense need, with the ongoing pandemic wreaking havoc on the health and well-being of our communities. But it has also been a time of immense giving, during which countless generous people have donated their time and money to support those who need it most.

While the pandemic prognosis is improving in the Bay Area overall, the events of the past 20 months may have consequences for hundreds of thousands of residents' lives for years to come, from employment to income to food security and more.

That's why it's heartening that donors of all giving capacities have come together to support local organizations working to address the impacts of COVID-19 and improve our communities across a wide range of issues. For example, in just the first three quarters of this year, donor generosity has allowed Silicon Valley Community Foundation to disburse \$464 million to Bay Area organizations supporting education, youth and community development, health, public safety and other important community issues. This figure represents a 13% increase compared to the same time period in 2020.

Local newspapers also get in on the giving. Each year at this time, The Almanac, along with the Palo Alto Weekly and Mountain View Voice, shines a light on important stories about community needs and raises money for non-profits serving families and children. The Almanac's own Holiday Fund raised more than \$270,000 during the 2020-2021 holiday season, thanks to overwhelming support from local donors. Silicon Valley Community Foundation covers the majority of the operating costs for these papers' campaigns, allowing recipient organizations to maximize donations. (To donate, visit almanacnews.com/holiday_fund or see the ad on page 9.)

One such recipient is the Boys & Girls Clubs of the Peninsula (BGCP), which provides high-quality programs to 2,500 K-12 students in Redwood City's North Fair Oaks neighborhood. Their programs help students to fill in gaps, reinforce what they are learning in school and develop the academic mindsets and habits that lead to success in school and beyond, so they can participate in and benefit from the opportunities Silicon Valley has to offer.

This work is especially important as the pandemic disrupted academic progress

for many students and caused feelings of loneliness and stress among youth. BGCP was able to redesign and implement new programs, including in-person learning pods, virtual crews and modified summer programs. This was thanks, in part, to the generosity of Holiday Fund donors.

But there are still many challenges ahead, especially for low-income people, communities of color and undocumented residents, all of whose needs have been marginalized for too long. While the pandemic showed us we have work to do to become a more equitable society, it also proved that the human spirit cannot be easily broken. We must come together with the spirit of giving that has seen our communities through the worst of the pandemic in order to help out our neighbors most in need. That means continuing our support for local organizations working on the frontlines of housing and food security, health, education and more.

Each of us has a role to play in bettering our local community and our nation as a whole. Whether you work at a non-profit, volunteer your time, or donate to the current Holiday Fund, you can make a world of difference.

Nicole Taylor is president and CEO of the Silicon Valley Community Foundation.

appears there is little interest by either city to participate in the program.

A few years ago, for unknown reasons, the City Council voted unanimously to terminate and stop the Sister City Committee. All seven of its members were removed from the committee. This occurred at the end of 2018. In 2019, 2020 and 2021 the program went to sleep. The hope was a group of citizens would form a non-profit organization to carry on the tasks formerly handled by the committee. It is anticipated that a \$10,000 gift will be provided to this unknown group of citizens to help jumpstart a new program. How they will spend it is unknown. What oversight there will be is unknown. What accountability is unknown. More ques-

tions than answers. Maybe the staff report will address these concerns, or maybe not.

*Jim Lewis
Oak Grove Avenue, Menlo Park*

LETTERS

Our readers write

Sister City program

Menlo Park has had a Sister City program for many years. In fact, its relationship with Galway, Ireland, can be traced back for nearly 150 years. In more recent times, another city was added as a Menlo Park sister city, it being Bizan, Japan. For the last several years, exchange students from both Menlo Park and Bizen have been traveling to each other's city on alternate years. Two other cities have gone dormant, with little to no activity since their creation. Those cities are located in India and in China. It may be well to terminate those relationships as it



Today's local news
& hot picks

Fresh news
delivered
daily

Sign up today at
AlmanacNews.com/express

Employment

The Almanac offers advertising for Employment, as well as Home and Business Services.

If you wish to learn more about these advertising options, please call 650.223.6582 or email digitalads@pawekly.com.

Marketplace

The Almanac offers advertising for Home Services, Business Services and Employment.

If you wish to learn more about these advertising options, please call 650.223.6582 or email digitalads@pawekly.com.

Public Notices

995 Fictitious Name Statement

MARY M SCHMIDT FUNDRAISING COUNSEL
FICTITIOUS BUSINESS NAME STATEMENT
File No.: 289342
The following person (persons) is (are) doing business as:
Mary M Schmidt Fundraising Counsel,
located at 75 El Vanada Road, Redwood City,
CA 94062, San Mateo County.
Registered owner(s):
MARY M SCHMIDT
75 El Vanada Road
Redwood City, CA 94062
This business is conducted by: An Individual.
The registrant commenced to transact business under the fictitious business name(s) listed above on August 1, 2021. This statement was filed with the County Clerk-Recorder of San Mateo County on October 28, 2021.
(ALM Nov. 12, 19, 26; Dec. 3, 2021)

997 All Other Legals

NOTICE OF PETITION TO ADMINISTER ESTATE OF:
MARYANN SMETZER
Case No.: 21-PRO-00632-A
To all heirs, beneficiaries, creditors, contingent creditors, and persons who may otherwise be interested in the will or estate, or both, of MARYANN SMETZER.
A Petition for Probate has been filed by: ROBERT J. KIDWELL in the Superior Court of California, County of SAN MATEO.
The Petition for Probate requests that: ROBERT J. KIDWELL be appointed as personal representative to administer the estate of the decedent.
The petition requests authority to administer the estate under the Independent Administration of Estates Act. (This authority will allow the personal representative to take many actions without obtaining court approval. Before taking certain very important actions, however, the personal representative will be required to give notice to interested persons unless

they have waived notice or consented to the proposed action.) The independent administration authority will be granted unless an interested person files an objection to the petition and shows good cause why the court should not grant the authority.
A HEARING on the petition will be held on 12/07/2021 at 9:00 a.m. in Dept.: 11 of the Superior Court of California, County of San Mateo, located at 400 County Center, Redwood City, CA 94063.
If you object to the granting of the petition, you should appear at the hearing and state your objections or file written objections with the court before the hearing. Your appearance may be in person or by your attorney.
If you are a creditor or a contingent creditor of the decedent, you must file your claim with the court and mail a copy to the personal representative appointed by the court within the later of either (1) four months from the date of first issuance of letters to a general personal representative, as defined in section 58 (b) of the California Probate Code, or (2) 60 days from the date of mailing or personal delivery to you of a notice under section 9052 of the California Probate Code. Other California statutes and legal authority may affect your rights as a creditor. You may want to consult with an attorney knowledgeable in California law. You may examine the file kept by the court. If you are a person interested in the estate, you may file with the court a Request for Special Notice (form DE-154) of the filing of an inventory and appraisal of estate assets or of any petition or account as provided in Probate Code section 1250. A Request for Special Notice form is available from the court clerk.
Attorney for Petitioner:
Alexandra Gadzo, Esq.
Gadzo Law, P.C.
220 State Street, Suite E,
Los Altos, CA 94022
(650)397-9300
(ALM Nov. 12, 19, 26, 2021)

Call Alicia Santillan at 650-223-6578 or email asantillan@pawekly.com for assistance with your legal advertising needs.

Artscene

PEOPLE AND PERFORMANCES IN ARTS AND ENTERTAINMENT

SHINING EXAMPLES

Artist Mary Corse brings an ethereal light show to Pace Gallery

By Sheryl Nonnenberg

The art world is notorious for overlooking or dismissing the contributions of women artists, especially in movements that involve “macho” media such as sculpture, assemblage and installation art. Pace Gallery in Palo Alto is attempting to rectify the situation by presenting the work of Mary Corse, a Southern California artist who was affiliated with the light and space movement of the 1960s. The gallery is featuring seven pieces, paintings and light boxes that, although executed recently, reflect the artist’s lifelong fascination with light and perception. This spare, elegant show is on view until Jan. 29.

The light and space movement was a sort of West Coast answer to minimalism, with its emphasis on cool, objective geometry that visually rejected the painterly angst of abstract expressionism. Its most famous proponents were Larry Bell, Robert Irwin and James Turrell. Mary Corse was right in the thick of this group, having trained as an abstract painter at University of California, Berkeley, but then relocated to Los Angeles in the mid-1960s in order to attend the Chouinard Art Institute. While there she, like her contemporaries, became entranced by the radiant light of Los Angeles. Unlike her male colleagues, however, Corse was interested in making objects that emitted, reflected and refracted light from within. A 2020 exhibit walk-through video from New York’s Lisson Gallery quotes Corse: “Nothing is static in the universe, so why make a static painting? It’s an unreality.”

In order to achieve her goals, Corse had to move away from traditional painting techniques and began using unconventional materials like fluorescent light tubes and high-frequency Tesla coils. She even took a course in quantum mechanics at the University of Southern California in order to better understand the principles behind light waves and

particles. She eventually found the perfect medium in the form of something functional yet prosaic that most of us encounter every day: the glass microspheres that are used in signage and highway markings. By adding these to acrylic paint, Corse was able to instill light within the painting. This light is variable, depending upon the position of the viewer. “As you move, the painting changes. Your perception changes the painting,” Corse said in the Lisson Gallery video.

The first of these works, “Untitled (2020)” is installed in the gallery foyer. This large-scale painting, executed using the microspheres in acrylic, was painted on aluminum. The painting was intended for outside installation and, in this setting, has the full advantage of raking light from the gallery’s front windows. There are vertical bands with very subtle gradations of color, gray and white, and, as the artist intended, the colors change in intensity as you walk from side to side. It is possible to see the microspheres embedded in the paint, but they are so tiny they do not impact the smooth surface.

In the second gallery, “Untitled (White Multiband)” and “Untitled (White Inner Band),” both from 2021, are executed on canvas. In these pieces, one can see the paint application, with broad strokes going both horizontally and vertically. In a 2018 video for an exhibition at the Whitney Museum of American Art, Corse showed how she paints the surface of the canvas, then pours the microspheres over it before shaking the excess off. It’s a seemingly rudimentary process that results in a silver/gray luminosity. The paintings might be construed as reminiscent of those of Mark Rothko and Barnett Newman, because of the stripes, but these works are much more subtle and less color-driven. We humans are naturally drawn to light and Corse plumbs this tendency by making us part of what she refers to as a “triangular relationship: the viewer, the surface, the light.”



Courtesy Pace Gallery

Pace Gallery in Palo Alto is showing works by Mary Corse through Jan. 29. To create pieces that emit or reflect light, Corse often draws on unconventional materials, including high-frequency Tesla coils and glass microspheres used to make road signs reflective.

Like most of the light and space artists, Corse also worked in sculptural form. She did a series of light boxes in the mid-1960s that she has revisited here with four pieces, “Untitled (Electric Light),” all created in 2021. These works rely much more on technology, utilizing argon, light tubes and high frequency generators. Encased in Plexiglas, these works emit light, flicker and are lit from inside, according to Pace Gallery’s press release, thanks to “Tesla coils that wirelessly transfer electromagnetic fields through the walls.” It isn’t really necessary to know how these sculptures were made, or from what materials, because standing in front of them is not so much visual as it is visceral. Free of the need to examine the formal elements (color, form, line, texture, etc.), we are able to understand one of Corse’s strongest credos, “Art is in the experience.”

In the third gallery area, two

more boxes have been installed. These pieces are smaller and rest on white stands (where the complicated wiring system is hidden from view). There is almost a feeling of being in a sacred place, due to the ethereal glow from the boxes and the added drama of the darkened space. Corse’s art does not translate well in reproductions; it really is necessary to encounter them in person. Explained Pace President Elizabeth Sullivan, “Mary Corse’s work inspires and transforms ways we receive — and most importantly, perceive — light, space and ourselves.”

It is impressive to realize that, at age 76, Corse is still working, still striving to create — and still has the same motivations that drove her as a young artist in Los Angeles 50 years ago. Her work has been shown at major museums and, in 2018, she had a retrospective at the Whitney Museum. So why isn’t she as well-known as

her counterparts? The prevailing theory cites the fact that she moved her studio away from the downtown art scene in Los Angeles in the ‘70s in order to raise her two children in Topanga Canyon. The Whitney catalog maintained that, although she was still working, “moving and distancing herself from feminism was a hedge against being marginalized as a ‘woman artist.’”

Whatever the backstory, it is nice to have the opportunity to see Corse’s engaging, innovative work. In a year darkened by the pandemic, a show that focuses on light seems both timely and hopeful.

Works by Mary Corse are on view through Jan. 29 at Pace Gallery, 229 Hamilton Ave., Palo Alto. For more information, visit pace-gallery.com. ■

Email Contributing Writer Sheryl Nonnenberg at nonnenberg@aol.com.

Food & Drink

Sociologist digs into food and inequality in America

Priya Fielding-Singh's book 'How the Other Half Eats' looks at how Bay Area families put food on the table

By Sara Hayden

Sociologist and author Priya Fielding-Singh's "How the Other Half Eats: The Untold Story of Food and Inequality in America" is one of the books I've been waiting for.

Sociologist and author Priya Fielding-Singh distills complex social threads and weaves them into a singular, compelling tapestry, giving insight into different Bay Area families' experiences as they navigate what to eat. Much of this is related to access, and Fielding-Singh's work asks society to take a broader view of what exactly it means to create a society with nutritional equality.

"Let's reframe what access means," Fielding-Singh said in an interview. "Let's talk about it in a holistic way that takes into account people's lived experiences, their environments, their stress levels, their employment, their housing — and talk about how those things come together in impacting diet."

Access to food is not just about

having a supermarket nearby, or the financial means to buy food. In fact, a lot of solutions aren't directly related to food at all. In the book, Fielding-Singh advocates for livable wages, child care support and affordable housing that free up families to dedicate more energy to food.

"These are all things that don't seem related to food, but are deeply, intimately related to food," Fielding-Singh said. "Those are some of the many family policies that I think would go a long way."

With that in mind, the book also reframes perceptions about how families across the social spectrum care for children through food and diet. "Especially in America, a country largely rooted in the idea that people get what they strive for and deserve, it can be difficult to accept that the parents of kids with 'poor' outcomes work just as hard as the parents of kids with 'good' outcomes. It doesn't seem fair," Fielding-Singh writes.

In illustrating these points

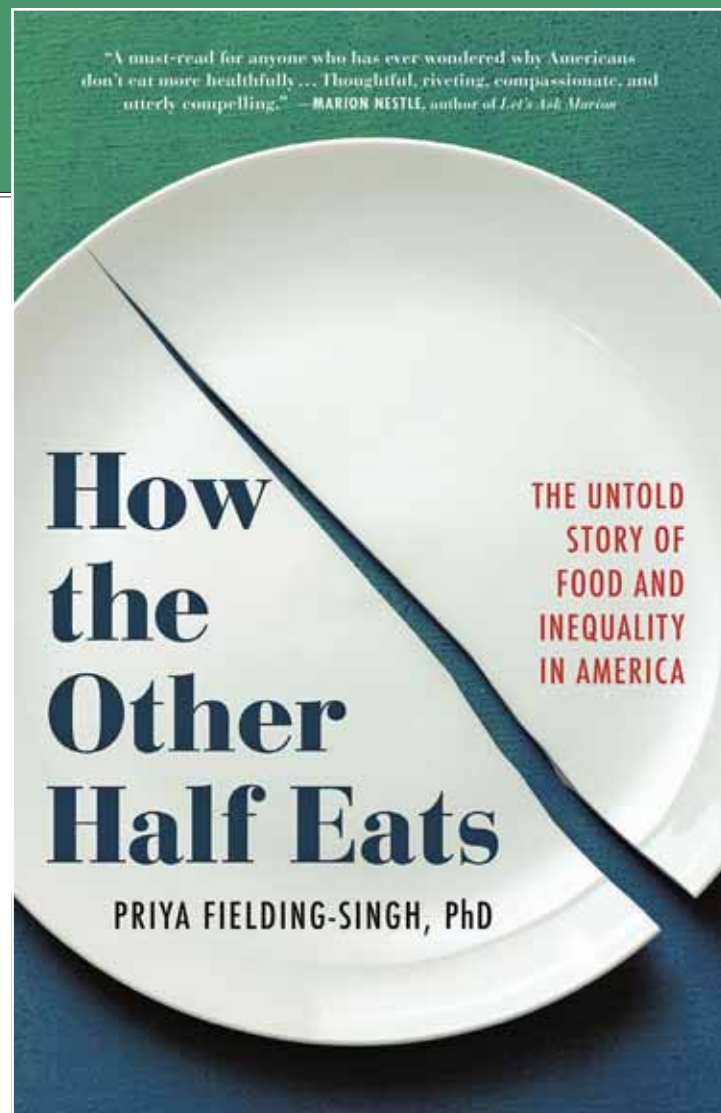
and much more, Fielding-Singh focuses on four Bay Area families: All have teenagers, but their experiences differ based on income, education and ethnoracial backgrounds. Fielding-Singh's approachable and thoughtful pages give space to explore: How do we choose between a Nabisco Oreo and a Trader Joe's Joe-Joe cookie, kale and collard greens, a lentil soup and a fast-food burrito? What food makes us feel good and why? How do we handle pickiness, scarcity, abundance? How do we use food as a signal of status or cultural assimilation, as a demonstration of love?

Fielding-Singh's approachable synthesis of interviews and observations — carried out with parents and children in 75 families during her doctoral research at Stanford University — is an engaging primer on a critical topic. It leaves me hungry for more accounts like this, that factor in people's lived experiences in shaping policies about how to ensure people get the nutrition they need.

Diving into some of these complexities, Fielding-Singh, a University of Utah Department of Family and Consumer Studies assistant professor, recently joined the Peninsula Foodist in conversation about her book, which is out now in bookstores, or may be ordered through the Hachette Book Group.

Peninsula Foodist: I'm interested to learn more about your journey... You have such extensive expertise in the subject (of nutritional inequality). That comes through in your education, your training, your work, and it felt like there was an underlying passion just from personal experience.

Priya Fielding-Singh: I think my interest in the topic really came from a broader long-standing interest in inequality that was seeded when I was pretty young. Growing up in Tucson, Arizona, my family decided to become a foster family. Pretty much all my middle and high school years, we fostered children from different backgrounds, many of whom had been born into poverty, had experienced different



Courtesy Little Brown Spark

Priya Fielding-Singh's book, "How the Other Half Eats: The Untold Story of Food and Inequality in America" argues that increasing access to food requires addressing underlying structural problems.

forms of traumas, resultive of being raised in really difficult circumstances.

I became really interested in understanding what the structural roots of those problems were, and how those inequalities manifested in my foster siblings' lives — even though we shared the same room, the same house for a short period of time, why we were on such different trajectories.

You know, I really came to food from an interest in inequality and an interest in health — these very stark, very consequential health disparities in the United States, a number of which stem in part from differences in diet and nutrition and the different ability of individuals in American society to secure a nutritious diet for themselves and others.

In sociology, there was definitely work on food, but very little work connecting food to diet to health. I felt like a lot of the conversation around diet, nutrition and inequality tended to be dominated by folks in the fields of public health and medicine who don't necessarily always have the on-the-ground experience, really seeing how these behaviors play out in people's lives and what food means to people. That was my hope as a sociologist: to be able to bring that into the conversa-

tion in a way that would nuance and deepen our understanding of where these dietary disparities come from and what we can actually do to reduce them.

Foodist: Thinking about all the structural inequities, it feels daunting to even start to unravel. Diet seems so key to that, and you write about "nutritional equality." What is "nutritional equality"?

Fielding-Singh: The way that I think about "nutritional equality" is that every individual, every family, has the means to eat a diet that will promote their health, instead of undermining it.

This is often talked about in terms of access. I think about it that way too, but I think about it less in a sense of being able to afford food or being able to geographically access food. I think about: How do we create a society in which every person lives a life in which eating nutritious food is easy, it's the default, it isn't something that's an uphill battle that has to be fought for, or is a privilege to which an elite few are entitled?

What that means to me is, how do we create a society where people earn enough money where they can afford the food, they live in neighborhoods where there's access to that food,

See **PRIYA FIELDING-SINGH**, page 26



Courtesy Vero Kherian

Priya Fielding-Singh, author of "How the Other Half Eats: The Untold Story of Food and Inequality in America," did research with 75 Bay Area families during her doctoral studies at Stanford University.

PRIYA FIELDING-SINGH

continued from page 25

and also they work hours that are reasonable so there's time to cook the food and they're treated well by their employers? So that they don't experience the stress and trauma of economic exploitation, and they have access to health care and providers that give them guidance and support in meeting a nutritious diet, they live in safe neighborhoods where their kids can run around and get physical activity. How do we create environments that are health-promoting?

To me, that's what being able to have access to nutritious foods is, and structural changes that I think are really important if we're going to have nutritional equality in this country.

Foodist: You were saying that every single one of us deserves the means to eat healthfully. You also have entire chapters on (topics like) pickiness. How can we ensure that we have access to healthful foods, and also meet individual preferences? I'm also thinking about "acculturation" and the dietary choices that might be informed by cultural contexts and cuisines.

Fielding-Singh: One argument of the book is that the food and beverage industry has really created a situation in which our preferences are really fundamentally shaped by their interests in profits. So you go to the grocery store, you look on your phone, you watch TV, you open a magazine and there is just so much advertising and marketing of unhealthy food that also happens to be really cheap and engineered to be really delicious.

It creates a situation where it's extremely difficult, especially for parents who are trying to teach their kids some healthy eating habits and to eat some fruits and vegetables. It's really difficult for parents to do that, because their kids are so exposed to these products that parents' desires for what their children eat become secondary. It becomes a situation where parents have to fight against the food and beverage industry to secure it.

I talk about this in the book in part in the context of dietary acculturation — that part of

what it means to emigrate to this country is that your kids are going to be exposed to lots of unhealthy processed foods.

When I think of different cultural preferences, different class preferences — just different preferences around what families eat — I think the food industry has actually taken away a lot of that, because it's created an environment that's so saturated by certain types of products that it's undermined parents' ability to feed their kids the food that they grew up with, the food of their countries of origin, the old family recipes.

Getting kids to eat that becomes a challenge, rather than something that's really easily and beautifully passed on.

Foodist: How can we curb Big Food?

Fielding-Singh: I think about it on a spectrum. I don't think we're ever going to be a country where Big Food doesn't have a lot of power and a lot of reach, but I think we can do more than what we're doing.

I talk in the book about at least furiously regulating marketing to children. We know that kids don't have the ability to tell what is an advertisement and what is the truth. They're extremely impressionable ... and kids' preferences matter a lot in what families eat.

'Studying food in the Bay Area is interesting because there's such a rich diversity of cuisines and cultures.'

PRIYA FIELDING-SINGH

Foodist: With the people that you wrote about, there's a judgment that comes through: There's a double standard in how society perceives what affluent moms are able to provide versus lower-income moms.

Fielding-Singh: This goes to "intensive mothering" a bit, and societal definitions of what "good" mothers are.

Foodist: I had never heard of some of these terms before, like "intensive mothering." It's described as ideology that arose in the 1980s and 1990s as a means to redomesticate women through motherhood. As more women in North America became more educated and increasingly entered the workforce, it placed the onus of raising kids on individuals rather than community or society.

Fielding-Singh: (laughs) That's a very sociological term.

Foodist: Having those terms defined and outlined, it was so eye-opening.

Fielding-Singh: When we

picture in the U.S. what a "good" mom is, we picture Julie (in the book), someone who is affluent, who's white, who's devoted to her children in a way that manifests in her being a stay-at-home caregiver, someone who's really vigilant about what her children eat and someone who devotes a lot of time and energy to making sure her kid has a healthy diet.

Julie represents a certain type of privilege — she has all the resources at her disposal to feed her kids a healthy diet. And even Julie has a hard time. Even she struggles, and often feels like she's letting herself and her kids down and she's not living up to these societal standards ...

Nyah, a lower-income Black mom, starts at a disadvantage. With the very limited resources that she has, she knows that the food that they're getting isn't always healthy, but in the midst of incredible, long-standing scarcity and a lot of adversity that her kids were experiencing because of growing up in poverty, food was one of those things she could give her kids every single day to bring a smile to their face. And it also reassured Nyah that she was a good mom, that she could provide for them, that she was competent, that she was loving and caring.

I think it's so interesting how something that for lower-income mothers is so meaningful and powerful and a testament to their devotion to their children is pretty much always read externally as negligence, or carelessness or bad motherhood. There's such a disconnect there about what it means to mother, to raise children in such dramatically different circumstances in this country.

Foodist: Do you have some concrete examples of how that plays out? I'm thinking about the judgment (and example) ... when you take your daughter in for a checkup and the nurse says, "Let's see how good of a job Mom is doing," that's tied to things like BMI charts and quantitative outcomes.

Fielding-Singh: I think (judgment) manifests for a lot of mothers in the pediatrician's office. The thing that I don't mention in the book is that even though that comment was insensitive and emblematic of the way that we think about mothers' responsibility for children's weights and health outcomes, I was still probably given the benefit of the doubt.

If my daughter's weight had turned out under or over on the growth curve, I would've felt some judgment, but I don't think under any circumstances that I would have experienced as much judgment as someone like Nyah would have.

Moms like Nyah would

describe this tension with going to the pediatrician's office where you don't want your kids to be too thin, because that could signal negligence, and you also don't want them to be overweight, but showing these health care providers, showing your caseworker, showing the person who works at the WIC office, you're trying to show that you can keep your kid fed, versus that your kid is going hungry.

Nyah always wanted to err on the side of them being fed more than less, because being fed less could be grounds for her kids being taken away.

'Something that is the source of pride for a higher-income mom — that her kid threw out a fast-food burrito — is an extreme source of stress for a lower-income mom.'

PRIYA FIELDING-SINGH

Low-income moms, especially low-income moms of color, I'm specifically thinking of Black and Latina moms, always lived with the threat that their kids could be taken away.

That kind of judgment, that kind of real repercussion, also shapes how their kids' dietary choices are read, and how they prioritize making sure their kids have enough versus too little.

Foodist: I think about one of the examples in the book where a higher income mom "flips the script" in terms of pickiness, with the Taco Bell incident, where her kid rejects fast food.

Fielding-Singh: Something that is the source of pride for a higher-income mom — that her kid threw out a fast-food burrito — is an extreme source of stress for a lower-income mom. So you see how the different resources and privileges fundamentally shape what a burrito means in the context of raising children.

I thought that was an interesting example, taking something that many parents experience, where their kids are really picky, and how that plays out for high- and lower-income moms.

Foodist: The focus of your research was in the San Francisco Bay Area. You're now in Utah, you grew up in Arizona — was there anything especially unique about the Bay Area?

Fielding-Singh: Because I was interested in nutritional inequality, the Bay Area actually seemed like a really strategic place to study, because you have the opposite ends of the pole in one region.

I make the argument in the

book, and I stand by it, that I think this is the direction that a lot of major metropolitan areas are going. Even being in Salt Lake City, which for pretty much ever has been a pretty small town with pretty affordable housing prices, the rents and prices and housing prices are shooting up. It's one of the hottest housing markets. With that, you're also seeing increases in homelessness. So I think the Bay Area is really a trendsetter in that regard.

Studying food in the Bay Area is also interesting because there's such a rich diversity of cuisines and cultures, and the Bay Area is also the hub of many food movements. If anything, families in my study were more aware of alternative food movements, an interest in farmers markets and local foods that are spreading across the country.

The Bay Area is definitely one of the leaders in that space. I think I saw that in mostly middle, upper middle class families, in the sense that a lot of lower-income families were not participating in those movements, which is not overly surprising.

... One of my motivations for writing the book was to change the conversation about where nutritional and food inequality come from.

When I mention my research and what I'm studying to strangers, the first thing that they say is "food desert." I feel like we really need to move beyond that. They exist ... But in most parts of the country that's not the primary driver of nutritional inequality.

It's so much more complex. It's so much more deeply related to and embedded in our families and in our feelings and our emotions and in the way we think about food.

Opening a supermarket in the neighborhood, that's not going to do the trick. That's not going to solve the problem.

We need to do so much more work, and a lot of it is elevating families out of poverty and bringing families into financial security.

Then I think we'll have a chance at achieving nutritional equity. ■

Email Associate Digital Editor Sara Hayden at peninsulafoodist@almanacnews.com.

Dig into food news. Follow the Peninsula Foodist on Instagram @peninsulafoodist and subscribe to the newsletter at almanacnews.com/express/foodist to get insights on the latest openings and closings, learn what the Foodist is excited about eating, read exclusive interviews and keep up on the trends affecting local restaurants.

LEHUA GREENMAN



"Wishing you a lovely season of Thanks-Giving
May you find time to enjoy life's blessings & the beauty of each moment."

650.245.1845 COMPASS



2415 SHARON OAKS DRIVE MENLO PARK



STYLISH TOWNHOME IN SOUGHT-AFTER SHARON HEIGHTS

The coveted neighborhood of Sharon Heights sets the stage for this remarkably stylish 3-bedroom, 2.5-bathroom townhome of nearly 2,000 square feet. Bright, fresh interiors enjoy appointments including crown molding, high ceilings, and beautiful vinyl wood floors, while numerous glass doors fill the home with natural light and open to private patio space for indoor/outdoor living. A fireplace centers the living room, while the sleek kitchen embraces modern design and features a suite of Samsung appliances. Two upstairs bedroom suites, including the spacious primary suite, both enjoy access to a private balcony perfect for enjoying a morning coffee, while an additional bedroom can also be used as an office. Plus, this home offers a Nest thermostat, laundry, and a 2-car garage with EV charging, while this incredible enclave of homes also includes a community pool and clubhouse. Just moments to the amenities of the Sharon Heights Shopping Center, this home is also convenient to both downtown Menlo Park and Palo Alto, Stanford University, and Interstate 280, and it is served by the acclaimed Las Lomas school district (buyer to verify eligibility).

OPEN HOUSE: SUNDAY 1:30 PM - 4:30 PM

www.2415SharonOaks.com

Offered at \$2,050,000

Listed by the DeLeon Team • 2.5% Commission Paid to Buyer's Agent • Waived if DeLeon Buyer's Agent

For more information contact: Audrey Sun, DRE #01933274 電話: 650.785.5822 我們精通國語和粵語
Managing Broker: Michael Repka, DRE #01854880 | www.deleonrealty.com | DeLeon Realty, Inc. | DRE #01903224



410 8TH AVENUE MENLO PARK



BRIGHT, SPACIOUS, AND A CENTRAL LOCATION

Nearly 2,200 square feet of bright, spacious interiors perfect for both entertaining and everyday living highlight this remodeled 5-bedroom, 3.5-bathroom home in sought-after Menlo Park. Excellent use of glass allows an abundance of natural light, and the home exudes a warm, welcoming ambiance from the moment you step inside. The floorplan includes the comfortable living room, the open kitchen with stainless-steel appliances, and the expansive dining room/family room that anchors the home. The primary suite offers a private retreat with a large walk-in closet and luxurious bathroom, while the home's additional bedrooms are privately arranged and include a guest suite with its own outdoor entrance. Plus, an extended driveway and carport ensure ample parking is always available. This great location is just a short drive to both downtown Menlo Park and Redwood City, convenient to Holbrook-Palmer Park, and offers easy access to both Caltrain and US 101 for Bay Area commuting.

OPEN HOUSE: SATURDAY 1:30 PM - 4:30 PM

www.4108thAve.com

Offered at \$1,825,000

Listed by the DeLeon Team • 2.5% Commission Paid to Buyer's Agent • Waived if DeLeon Buyer's Agent

For more information contact: Audrey Sun, DRE #01933274 電話: 650.785.5822 我們精通國語和粵語
Managing Broker: Michael Repka, DRE #01854880 | www.deleonrealty.com | DeLeon Realty, Inc. | DRE #01903224



1360 CLOUD AVENUE MENLO PARK



UPDATED AND BRIGHT IN WEST MENLO

Bright, updated interiors and a floorplan perfectly suited for a modern lifestyle make this West Menlo home on a 7,000 square foot lot an excellent choice for Silicon Valley living. Beautiful hardwood floors extend throughout over 1,800 square feet of living space with a light, airy ambiance thanks to ample natural light. A fireplace centers the living room, which flows into the dining room, and the granite-appointed kitchen includes stainless-steel appliances and a butcher block-topped island. Three spacious bedrooms in the main home, including the expansive primary suite, each feature outdoor access, and this home also includes an ADU with a kitchen and additional full bathroom for added accommodations. Find great space for outdoor enjoyment in the peaceful backyard with colorful plantings, fruit trees, a deck, and an expansive patio. Plus, you will be just moments to the amenities of downtown Palo Alto, a short drive to Sharon Park, and to Stanford University, and enjoy access to the acclaimed Las Lomas school district (buyer to verify eligibility).

OPEN HOUSE: SATURDAY & SUNDAY 1:30 PM - 4:30 PM

www.1360Cloud.com

Listed at \$3,100,000

Listed by the DeLeon Team • 2.5% Commission Paid to Buyer's Agent • Waived if DeLeon Buyer's Agent

For more information contact: Audrey Sun, DRE #01933274 電話: 650.785.5822 我們精通國語和粵語
Managing Broker: Michael Repka, DRE #01854880 | www.deleonrealty.com | DeLeon Realty, Inc. | DRE #01903224



99 OAK HAVEN WAY WOODSIDE



OVER 1.1 ACRES IN WOODSIDE HILLS

This spacious home of over 4,000 square feet exemplifies the rustic charm of its sought-after location in Woodside Hills. Nestled on over 1.1 acres of peaceful, verdant land at the end of a cul-de-sac, this home enjoys a warm, welcoming ambiance that permeates expansive gathering areas perfect for both entertaining and daily living. Highlights include a fireplace in both the living room and family room, the bright kitchen, and the dining room opening to the front deck for al fresco enjoyment. Multiple bedrooms, including the primary suite, lead to private balconies overlooking the home's magnificent grounds, while another bedroom leads to bonus space. Experience true indoor/outdoor living as numerous rooms open to decks on both sides of the home, including a refreshed rear redwood deck with beautiful views. Plus, this home includes office space, and an attached 2-car garage with an extended driveway for ample parking. Just moments to parks and nature preserves, you will also be convenient to downtown Redwood City, and have easy access to Interstate 280.

OPEN HOUSE: SUNDAY 1:30 PM - 4:30 PM

www.99OakHaven.com

Offered at \$4,488,000

Listed by the DeLeon Team • 2.5% Commission Paid to Buyer's Agent • Waived if DeLeon Buyer's Agent

Michael Repka, DRE #01854880 | 650.900.7000 | michael@deleonrealty.com

中文諮詢請聯繫 Audrey Sun, DRE #01933274 電話: 650.785.5822 | www.deleonrealty.com | DeLeon Realty, Inc. | DRE #01903224



835 WESTRIDGE DRIVE
PORTOLA VALLEY



RESORT-LIKE PROPERTY OF OVER 3.5 ACRES

The quintessential beauty of Portola Valley provides the perfect backdrop for this spectacular estate of over 7,400 square feet, including a beautiful guest home of more than 700 square feet, resting on over 3.5 verdant acres of resort-like grounds. A gated paver motor court introduces the property, and inside, this home presents a luxurious ambiance with soaring ceilings, fine millwork, floors of marble and hardwood, and stunning walls of glass that bring the outside in. The floorplan is scaled for entertaining yet comfortable enough for everyday living, and features the living room with a fireplace, the chef's kitchen with high-end appliances, and the expansive family/game room, plus a theater, wine cellar, yoga/fitness room, and so much more. Accommodations include 4 bedroom suites, highlighted by the incredible primary suite with a sitting room and fireplace, while the detached guest home offers an additional bedroom, bathroom, and kitchen. Experience true indoor/outdoor living as multiple points throughout the home open to a multi-level deck with a built-in grill and peaceful views of the home's magnificent grounds, featuring meandering walking trails, a gazebo, and a side area with an enticing blend of both natural and synthetic grass. Moments from beautiful nature preserves and trails, this home is just minutes to the iconic Roberts Market, and offers access to acclaimed Portola Valley schools (buyer to verify eligibility).

OPEN HOUSE: SUNDAY 1:30 PM - 4:30 PM

www.835Westridge.com

Offered at \$8,988,000

Listed by the DeLeon Team • 2.5% Commission Paid to Buyer's Agent • Waived if DeLeon Buyer's Agent

Michael Repka, DRE #01854880 | 650.900.7000 | michael@deleonrealty.com

中文諮詢請聯繫 Audrey Sun, DRE #01933274 電話: 650.785.5822 | www.deleonrealty.com | DeLeon Realty, Inc. | DRE #01903224



Exquisite New Construction in West Atherton



10 Atherton Avenue, Atherton – A Private Oasis

New contemporary home with exceptional design and amazing natural light

Gated driveway to discrete lot on over one-half acre; ultimate California indoor/outdoor living

5 bedrooms, office, and 5.5 baths on two levels

Stunning sleek finishes including porcelain and white oak hardwood floors throughout

Fleetwood windows and disappearing glass doors throughout

Contemporary gardens with natural grasses, lawn, sparkling pool, water features, and fire pit

Available to show by private appointment

5
BEDS

5.5
BATHS

0.5+
ACRE LOT



\$9,850,000

10Atherton.com



Judy Citron

650.400.8424

judy@judycitron.com

judycitron.com

DRE 01825569

#1 Agent ENTIRE Bay Area

#5 Agent California

#21 Agent Nationwide

COMPASS