

The Almanac

THE HOMETOWN NEWSPAPER FOR MENLO PARK, ATHERTON, PORTOLA VALLEY AND WOODSIDE

NOVEMBER 25, 2022 | VOL. 58 NO. 12



WWW.ALMANACNEWS.COM

Mystery of how a Woodside barn's mural ended up in a Redwood City parking lot

Tiles from prominent muralist's work, sold to Woodsider in 1984, were found near Costco

By Angela Swartz

How did a mural of Sausalito, sold to a Woodside resident 38 years ago, end up near a Costco parking lot? That's what Ron Wagner, whose father — prominent San Francisco-born ceramic artist Guillermo Wagner Granizo — created the 7-by-9-foot work, is wondering.

In mid-October, Menlo Park resident Marjorie Schulz found 52 of the 63 tiles of the work during a shopping outing near the store, located on Middlefield and Woodside roads in Redwood City, on the curb in front of the store Plant Tomorrow. When she and her husband, Chris Fuller, finished shopping at Costco and Outdoor Supply Hardware about an hour and half later, they were still there so she loaded the "beautiful tiles" into her car.

After doing some detective work, laying the tiles out in her

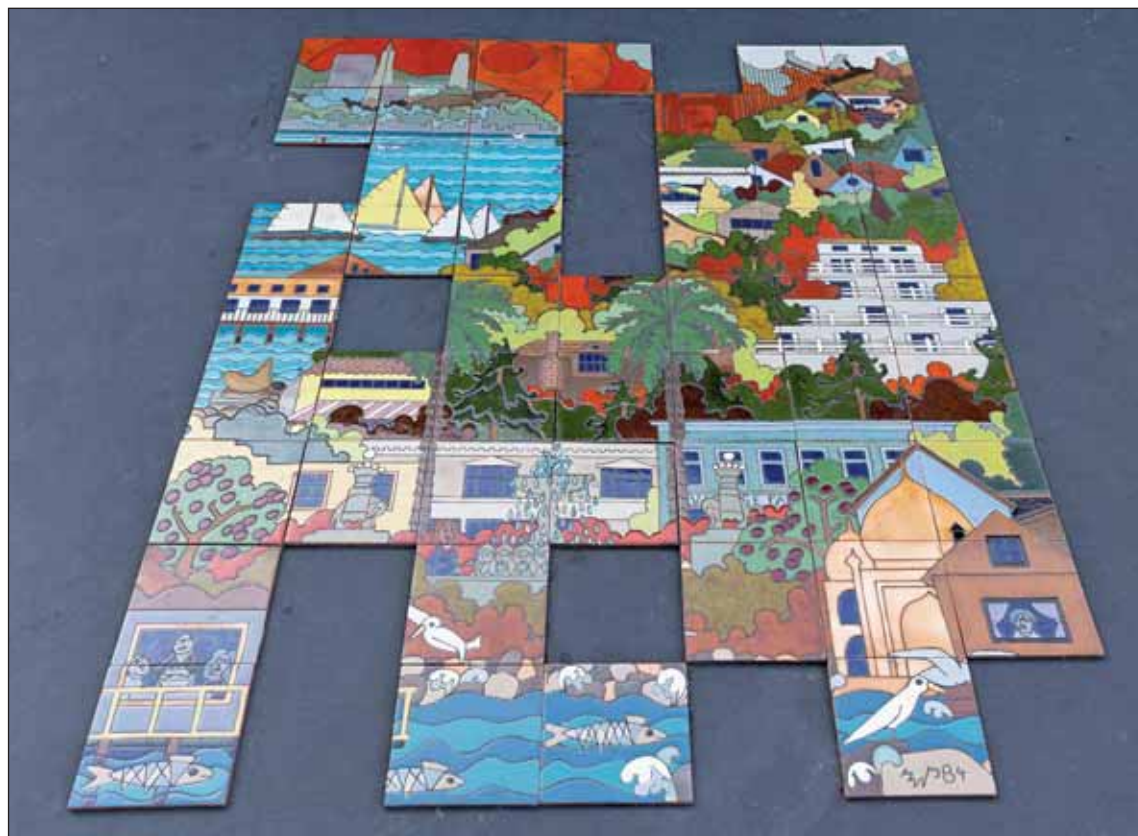
backyard and discovering they might all fit together, she discovered the artist's website and contacted his son. Wagner said he'd like to know where the 11 missing tiles are. He assumes they broke and ended up in the dumpster.

"I'm curious how it got there," he said. "It was just so surreal to me. It felt like this is a twilight zone story; why would this be abandoned on a street corner? Why was it not still in the barn? How did this lady have the presence of mind to do the research?"

Schulz said that part of the reason she was really interested in the tiles is that she does mosaic work with old tiles herself.

Wagner said the mural was sold at an auction at the Sausalito Art Festival in 1984 to a Woodside resident. The Almanac contacted the festival organizers to see if they have a record of

See **TILES**, page 12



Magali Gauthier

A mural of Sausalito by prominent San Francisco-born ceramic artist Guillermo Wagner Granizo originally made up of 63 tiles is now incomplete with only 52 tiles found by a Menlo Park resident who was shopping nearby.

New 163-room hotel coming to Menlo Park's Bayfront neighborhood

By Cameron Rebosio

The Menlo Park Planning Commission voted on Nov. 14 to approve a 163-room hotel on a bite-sized property near the bay, despite a mixed reaction from commissioners worried about limited public outreach.

The site of the proposed Hotel Moxy is located at 3723 Haven Ave. on a 0.76-acre lot, currently home to an office building. The developer, FPG Development Group, is seeking to build an eight-story hotel on the small property along

with 124 parking spaces. The project would include a coffee shop on the ground floor and a fourth-floor outdoor garden with a bar and restaurant which comprise some of the 5,393 square feet of publicly accessible open space.

An initial study of the project posed several mitigation measures that could help reduce the potential effects on air quality, noise and other environmental impacts.

The fourth-floor bar and restaurant will close at 10 p.m. and there would be specialized food events for the public on

weekends. Representatives for the project said that they would aim to hire largely from the local community and offer 40 or more community jobs with full benefits. Approximately six months before the opening of the hotel, an open house would be held solely for Menlo Park residents.

The building will be partially electrified through reusable resources, with an estimated 15% of the energy coming from solar panels, and have dual plumbing to reclaim water.

See **HOTEL**, page 6



Rendering courtesy FPG Development Group

The site of the proposed Hotel Moxy is located at 3723 Haven Ave.

INSIDE

Help local families in need 13

ARTSCENE 19 | FOOD 22





Eugene

"I rely heavily on your Meals on Wheels. I don't know what I'd do without the support."

Eugene is an 85-year-old veteran and loves his independence. He became a PVI's Meals on Wheels recipient at the start of the Pandemic when his medical condition made it impossible for him to shop and cook for himself. Eugene's painful neuropathy and chronic arthritis severely impact his mobility. Managing both chronic conditions have significantly affected his lifestyle, yet Eugene describes PVI's Meals on Wheels "as a life-saver!" Not only does he enjoy the nutritious meals, he looks forward to the warm and friendly delivery drivers.

Daily Senior Impact:

1 in 6 seniors is facing hunger

1 in 3 seniors dies with Alzheimer's or another dementia

Nearly 1 in 5 spousal caregivers passes away before their loved one

1 in 4 seniors live alone and feel lonely.

50% of seniors living alone are without the finances for basic needs, transportation, or technology to access the wellness programs they need

Among PVI's Firsts:

- The first **suburban senior activity center** in the U.S. to promote health and well-being.
- The first groundbreaking initiative and **HUD grant in the U.S. for the construction of affordable senior housing.**
- The first state-of-the-art, purpose-built **licensed adult day services facility** for those with Alzheimer's and other dementias.
- One of the first **on-demand, concierge transportation services** for seniors to empower independence.

Celebrating 75 years

PVI

Enabling Seniors to Age in Place

Your impact spans PVI's 75-year history of firsts in senior services

Peninsula Volunteers, Inc. (PVI) celebrates our **75th year of enabling seniors to age in place.** We accomplished this milestone because of your significant generosity spanning our humble yet bold beginnings. **Thank you for staying by our side.**

PVI was a **leader in gerontology** at a time it was unheard of. **In 1947**, our visionary women founders built a remarkable legacy, enriching the lives of countless thousands of local seniors and their families.

The challenges are now much larger in scope

Many local seniors are struggling to stay afloat in today's uncertain environment. Current needs are far outstripping the growth of the local aging population and the gap is widening. **Widespread loneliness, social isolation, hunger, and health inequities** cut deeper into community lives. **Mounting inflationary costs** are further straining financial resources beyond sustainability and shutting our seniors out.

Join us as we transform aging

PVI will continue to **transform aging** in our local communities, changing the way seniors are cared for and treated as valuable members of society. New levels of concierge caregiver and family support services, expansion of innovative community partnerships, and extension of our local geographic reach will meet the challenges ahead for you and your family members.

You may ask, how can I make a difference right now?

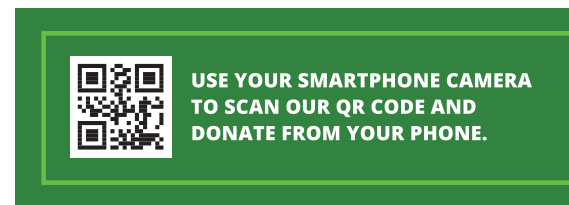
You have the power to change the life of a senior today. Your gift of support is indispensable to the **thousands of local families relying on us** during the holiday season and beyond for their health and well-being. Please make your gift of an amount that is right for you* securely online and spread the word to a friend who shares your passion to help extend senior health and independence for seniors like Eugene and Helen. Visit www.1pvi.org and www.1pvi.org/donate.

**\$500 funds one month of PVI Meals on Wheels for two at-risk seniors or one annual Senior Center fitness membership.*

With hope and gratitude for PVI's next 75 years,

Peter Olson
Chief Executive Officer

Georgie Gleim
Board President



Helen

For 75 years, Peninsula Volunteers, Inc. has enabled seniors to age in place, driven by a profound legacy of caring and our core values of respect, commitment, trust, dedication and compassion. Our four core programs serve over 6,000 households and address the most pressing issues of aging adults by offering critical services to sustain their daily physical, nutritional, emotional and mental health while achieving dignity and independence in their lives. PVI's programs include Nutrition Services/Meals on Wheels; Adult Day Services at Rosener House; Health, Wellness and Lifetime Enrichment offerings at Little House; and on-demand Transportation Services at Little House.

800 MIDDLE AVENUE • MENLO PARK, CA 94025 (650)326-2025 • WWW.1PVI.ORG

jj team
homes

Thank You!

We have the best clients in the world.

Every day we're grateful for our wonderful clients, who place the care and trust of their real estate needs in our hands.

At J+J Team Homes we love a good challenge. We pride ourselves on being strategic, out-of-the-box thinkers in achieving our clients' goals. We are never limited to what is offered on MLS - this year over 45% of our sales were **OFF MARKET** transactions.

If you're in the market - or want to be - contact us today!



Here are just some of our 2022 sales!

jj team
homes

INTERO
A Berkshire Hathaway Affiliate

650.430.7000
jj@jjphomes.com
jjteamhomes.com

JAIME LYNN JONES
650.430.7000 | Lic. #01312426

JULIE MARIANI CASSEL
650.435.2496 | Lic. #01782731



The Almanac

DEMOCRACY IS IN OUR Roots

Your contribution preserves
the local journalism
we all depend on so our
democracy can thrive.

LOCAL JOURNALISM
NEEDS YOUR SUPPORT

JOIN AT: AlmanacNews.com/join/

You can also subscribe
for one year by mailing a
check for \$144 to us at
450 Cambridge Ave.,
Palo Alto 94306.

SUPPORT LOCAL
JOURNALISM



Local News

MENLO PARK | AThERTON | WOODSIDE | PORTOLA VALLEY



Leah Worthington

A memorial at the scene of the Nov. 4 car crash in Redwood City that killed a San Carlos couple and injured their 7-year-old twins.

Two drivers arrested on murder charges in crash that killed parents of twin girls

Police allege that the two men, ages 23 and 17, were racing each other

By Leah Worthington

Two drivers, including a 17-year-old, have been arrested and face second-degree murder charges for their involvement in a major vehicle crash in Redwood City

that resulted in the death of a San Carlos couple and leaving several others injured, according to the Redwood City Police Department.

The defendants, 23-year-old Kyle Harrison and a 17-year-old male, were allegedly drag

racing just before 8 p.m. on Nov. 4 when the teen's vehicle collided with a car containing a family of four at the intersection of El Camino Real and Finger Avenue, police

See **CRASH**, page 9

Portola Valley mayor concedes to challenger in town council race

Mary Hufty will be sworn in on Dec. 14 after ousting the incumbent

By Angela Swartz

When the county's updated vote count came out on Friday, Nov. 18, Portola Valley Mayor Craig Hughes said he was ready to accept defeat against retired family physician Mary Hufty in the race for Portola Valley Town Council.

Hufty, who could not be reached for a comment, is set to take third place in the



Mary Hufty



Craig Hughes

race for three seats on the council, behind Planning Commissioners Judith Hasko and Craig Taylor.

Hufty received 1,278 votes (18%) while Hughes had 1,244 votes (17.5%), according to the latest vote count on Monday, Nov. 21. Hughes had a small lead over Hufty earlier on election night, but Hufty, who unsuccessfully ran for council in 2020, had overtaken him by the end of the evening's vote tally.

"Well, I guess I lost in the end," Hughes said in a Nov. 18

See **MAYOR**, page 16

Seeking to curb emissions, Atherton is gradually phasing out gas, while Portola Valley takes a stricter approach

Atherton stopped short of banning all gas-powered appliances

By Angela Swartz

Atherton is taking a gradual approach to going all-electric with new construction to curb the use of natural gas, allowing exemptions for residents who don't want to give up their gas stoves. Meanwhile, Portola Valley recently passed similar reach codes, but with fewer exemptions than Atherton is permitting.

On Nov. 16, the Atherton City Council opted to provide exemptions in new construction for indoor and outdoor cooking appliances, fireplaces and outdoor fire pits that use the fossil fuel, the changes which take effect Jan. 1. It adopted stricter policies than other Peninsula cities for electric vehicle (EV) charging, requiring more level 2 chargers than most cities, including making EV chargers available to accessory dwelling units (ADUs), guest houses and pool houses.

"The most important thing is, we're setting a standard in the green building codes to support all-electric space heating and water heating for new houses and I think that's a very big deal," said Atherton Mayor Rick DeGolia at the Nov. 16 council meeting. "Gas is a fossil fuel and pollutant and that is a problem. I don't know that it's entirely our job to tell people what to do, because I do think that people can choose."

Exemptions in the town's rules also include the use of gas-powered emergency generators. Council member Diana Hawkins-Manuelian said that it's important to move away from gas-powered appliances.

The City Council accepted \$10,000 grant from Peninsula Clean Energy in 2021 to compensate for staff and consultant time to explore adopting reach codes to require new buildings in Atherton be all-electric.

Atherton's recently completed civic center is all-electric. Reach codes are local regulations that go beyond what's required in state codes.

Nineteen of the 22 agencies in the area have adopted reach codes, said Rafael Reyes, director of energy programs at San Mateo County's electricity provider Peninsula Clean Energy. Although some cities have opted to include exemptions, which commonly involve using gas for cooking and fireplaces, in years' past, it's worth noting that a number of cities are reducing exceptions in the 2022 cycle, he said.

"PG&E has noted that exceptions increase complexity and can result in increased costs to maintain the gas system," he said in an email. "Cities are interested in improving the emissions reductions potential and PG&E has noted that continued small usage across the system will result in significantly increased gas costs over time."

Burlingame recently eliminated its exemptions for indoor and outdoor cooking appliances, and fireplaces. The city of San Mateo recently adopted a resolution requiring all-electric new construction and transitioning to electric in most remodels of existing homes, according to the San Mateo Daily Journal.

"Atherton is cutting edge compared to much of the state (and) nation, but it's fairly average regionally," said Stacy Miles Holland, chair of Atherton's Environmental Programs Committee, and an incoming Atherton City Council member, in a statement. "But being average is a big improvement!"

Switching from gas to electricity could reduce the annual emissions of a California household by 50 to 70% and 46 to

See **EMISSIONS**, page 9

State officials: Transmission of flu, COVID-19 and RSV is growing 'in every category'

By Eli Walsh/Bay City News

Transmission of the flu, COVID-19 and respiratory syncytial virus is increasing statewide simultaneously and could lead to overwhelmed hospitals this winter, one of the state's top health officials said Nov. 17.

COVID test positivity and case rates have climbed by roughly 25% over the last two weeks along with evidence of increase transmission in the state's wastewater systems, according to state Health and Human Services Secretary Dr. Mark Ghaly.

Cases of flu and RSV, which causes infections in the respiratory tract, have also

increased sharply in recent weeks and have already led to increased hospital populations across the state.

"In every category that we track, whether it's test positivity, case rate numbers, wastewater surveillance, clinical surveillance, hospitalizations, we're seeing increases for RSV, flu and COVID," Ghaly said.

The state has also already seen levels of RSV among young children that rival previous years' peaks, which usually occur in late January, February and March.

While most children infected with RSV will only deal with common cold symptoms like a fever, cough and runny nose, young children are at

greater risk because their respiratory and immune systems are still developing.

"Certainly, if that's all it were, we'd be a lot less concerned," he said of the common cold symptoms. "But for infants and young toddlers in particular, RSV can cause a much worse experience."

There is not currently a vaccine for RSV, but Ghaly urged state residents to get a flu vaccine and a COVID booster vaccine, if eligible.

As of Nov. 3, just 13.3% of state residents have received an updated COVID booster, which targets two subvariants of the omicron variant as well as the original strain of the virus.

The booster is currently available to everyone ages 5 and up who received their last vaccine dose at least five months prior.

Ghaly also noted that it is not too late to get a flu or COVID vaccine and that it will still protect those who have yet to get either shot ahead of the winter holidays.

"We can't always prevent you from getting an infection, but we do have some tools that can make more likely that you don't have severe disease," Ghaly said. "And that severe disease is exactly what leads you to be hospitalized and ... even lose your life." ■

Menlo Park City School District sends off longtime trustee

Stacey Jones served on the board since 2014

By Angela Swartz

Flowers and cake was in order at the Thursday, Nov. 17, Menlo Park City School District board meeting, as the community said goodbye to longtime trustee Stacey Jones. Colleagues spoke with admiration of Jones' humble, calm demeanor.

The board passed a resolution on Nov. 17 recognizing Jones' service to the district following eight years as a trustee.

"The remaining Trustees of the Menlo Park City Elementary School District do hereby offer to Stacey Jones our profound gratitude for her exemplary service and declare her Board Member Extraordinaire with a lifetime invitation to the board's

annual organizational meeting as long as you bring your intense appreciation of the Brown Act, and we promise to provide you a personal candy dish and turn up the thermostat," the resolution states.

During her tenure, she helped the district manage enrollment fluctuation and funding challenges, and oversaw superintendent leadership changes twice. During her tenure, the district opened the Early Learning Center and earned National Blue Ribbon, California Distinguished



Stacey Jones

School, and Pivotal Practice honors, according to a Nov. 17 district newsletter.

Trustee Sherwin Chen described Jones as a "role model, mentor and friend."

"What I value the most is you always brought this sense of balance and making sure the board did not miss the forest for the trees," he said. "I always thought of you as a rabbit hole destroyer; getting us back on track."

Jones considered resigning her post in 2018 because she and her family were likely to move to Colorado where her husband took a job.

Outside of the school board, she served on the Laurel PTO Board.

"Her legacy is particularly felt at Laurel where she participated

in the visioning and site design committees for Laurel's expansion," the newsletter states. "MPCSD is so grateful to Stacey Jones for her loyalty and dedication to our schools and community. We wish her all the best in her future endeavors."

Laurel Lower School Principal Linda Creighton described Jones as "the most understated, quiet, calm leader."

"She knows when to step up and step back," Creighton said of Jones.

Jones said she was overwhelmed and touched by the community feedback on her time on the board. ■

Email Staff Writer Angela Swartz at aswartz@almanacnews.com.

HOTEL

continued from page 1

Commissioner Linh Dan Do spoke about a perceived lack of community outreach by the applicant.

"I really appreciate your very clear priorities when it comes to hiring local people, but at the same time, other commissioners have raised a lot of issues about (how) this process was maybe lacking community outreach," Do said.

The commission also expressed concern about the suitability of the lot for the project, as it would require building vertically to accommodate all of the amenities, such as the bar and restaurant.

"I'm not in love with the project, and I'm perfectly happy to vote to

deny," Commission Chair Chris DeCardy said.

The commission asked for the applicant to do additional outreach to surrounding residents, including signage. However, the commission cannot guarantee participation, only that an attempt is made.

"I can't imagine an outreach effort that you would propose that would be considered unreasonable to the applicant, other than 'go knock on the door of every person within a mile with a plate of cookies,'" said Ed Shaffer of the city attorney's office. "I don't mean to be facetious, but I would think that I'm sure they would intend to do everything within reason to avoid a problem with the commission."

The commission voted 5-1 to approve the project's use permit with the condition that the developers revisit six months before the temporary certificate of occupancy report back on outreach efforts and amend them if the commission sees fit. The applicant will check in with the commission once again regarding outreach efforts six months after the temporary certificate of occupancy.

Commissioner Barnes was the sole dissenting vote. Barnes said that he believes the hospitality project is not the right fit for that lot. ■

Email Staff Writer Cameron Rebosio at crebosio@almanacnews.com.

Established 1965

The Almanac

Serving Menlo Park, Atherton, Portola Valley, and Woodside for over 50 years

NEWSROOM

Editor
Andrea Gemmet (223-6537)

Assistant Editor
Kevin Forestieri (223-6535)

Arts & Entertainment Editor
Heather Zimmerman (223-6515)

Staff Writers
Cameron Rebosio (223-6536),
Angela Swartz (223-6529)

Embarcadero Media Staff Writers
Sue Dremann (223-6518), Malea Martin (223-6516), Zoe Morgan (223-6519),
Gennady Sheyner (223-6513),
Leah Worthington (223-6533)

Editorial Intern Emily Margaretten

Contributors Kate Daly, Maggie Mah

Special Sections Editor
Linda Taaffe (223-6511)

Chief Visual Journalist
Magali Gauthier (223-6530)

DESIGN & PRODUCTION

Design and Production Manager
Kristin Brown (223-6562)

Designers
Linda Atilano, Kevin Legnon, Paul Llewellyn, Mary Watanabe, Doug Young

ADVERTISING

Vice President and Chief Revenue Officer
Tom Zahralis (223-6570)

Display Advertising Sales (223-6570)

Real Estate Manager
Neal Fine (223-6583)

Legal Advertising
Alicia Santillan (223-6578)

ADVERTISING SERVICES

Advertising Services Manager
Kevin Legarda (223-6597)

Sales & Production Coordinator
Diane Martin (223-6584)

The Almanac is published every Friday at
3525 Alameda De Las Pulgas,
Menlo Park, CA 94025

- **Newsroom:** (650) 223-6525
Newsroom Fax: (650) 223-7525
- **Email news** and photos with captions to: Editor@AlmanacNews.com
- **Email letters to:** Letters@AlmanacNews.com
- **Advertising:** (650) 854-2626
Advertising Fax: (650) 223-7570
- **Classified Advertising:** (650) 854-0858
- **Submit Obituaries:** AlmanacNews.com/obituaries

The Almanac (ISSN 1097-3095 and USPS 459370) is published every Friday by Embarcadero Media, 3525 Alameda de las Pulgas, Menlo Park, CA 94025-6558. Periodicals Postage Paid at Menlo Park, CA and at additional mailing offices. Adjudicated a newspaper of general circulation for San Mateo County. The Almanac is delivered to homes in Menlo Park, Atherton, Portola Valley and Woodside. However, in order to continue delivering you the news you depend on, we encourage you to become a paid subscribing member. Go to AlmanacNews.com/subscribe to start supporting The Almanac today.

POSTMASTER: Send address changes to the Almanac, 3525 Alameda de las Pulgas, Menlo Park, CA 94025-6558.

Copyright ©2022 by Embarcadero Media. All rights reserved. Reproduction without permission is strictly prohibited.

The Almanac is qualified by decree of the Superior Court of San Mateo County to publish public notices of a governmental and legal nature, as stated in Decree No. 147530, issued November 9, 1969.

To request delivery, or stop delivery, of The Almanac in zip code 94025, 94027, 94028 and the Woodside portion of 94062, call 854-2626.



Today's local news & hot picks

Fresh news delivered daily

Sign up today at AlmanacNews.com/express

Getting ready to ban gas leaf blowers, Menlo Park works on outreach

By Cameron Rebosio

When it comes to phasing out gas-powered leaf blowers, landscape professionals don't have much to say about it, according to outreach efforts by the city of Menlo Park.

Menlo Park has a target date of July 1, 2024 to enforce a ban on the use of gas-powered leaf blowers and string trimmers, with a ban on other types of gas-powered landscaping equipment starting in January 2029. But first, the Menlo Park City Council asked staff to reach out to stakeholders before making a decision on implementing the new rule and enforcing it.

Staff sent out 102 emails to landscaping professionals in Menlo Park and received only five responses, with one in support of using electric appliances and one opposed. They did not receive a response from the California Landscape Contractors Association

(CLCA), but there was information available to the public from the organization.

The city received 107 total responses including other stakeholders such as landowners in Menlo Park. Of these responses, 35 residents already owned electric leafblowers and 19 stated their support for the regulation of gas-powered landscaping equipment.

One resident, Sean van Dril, spoke about the impacts of gas-powered leaf blowers on higher density communities.

"(In a fourplex) the majority of the days of the week, we have landscaping services in a lot adjacent to ours," van Dril said. "Because we have no air conditioning, that means, especially in the summer, we have to close all of our windows. It gets hot, and when we open them we have the smell of exhaust, not to mention all of the dust that's kicked up."

The enforcement would focus on property owners, on whose land the work is being done,

rather than the gardeners using the equipment, as is done with noise ordinances. The city is focused on enforcement strategies, as there are vacancies in the city's code enforcement and community officer ranks.

At an Oct. 18 study session meeting, Council member Jen Wolosin proposed the city add an option to its app that would allow residents to notify the city of violations.

Council member Ray Mueller said enforcement should prioritize a system of escalating consequences, so that residents aren't blindsided by a law they've never heard of. Mueller also said that the city should take hardship into account and be flexible in its enforcement.

"We can do all the outreach in the world that we want to do," Mueller said. "I don't think it's going to reach everybody, and I think what's going to end up happening is when we go to implement people are going to hear about for the first time."

Leah Elkins, resident and member of the Environmental Quality Commission spoke about moving up the timeline on implementation and enforcement, and instituting the law before July 2024 with a six month grace period.

"(By moving up the timeline) we could at least save some more time where we wouldn't have to be living with these machines that are harming our health and the health of our children, as well as our peace and quiet," Elkins said.

Wolosin was heavily in support of regulating the use of gas-powered equipment.

"I feel like we can't ban these things soon enough, they're horrible," Wolosin said. "For all the reasons that our residents have articulated beautifully They're loud, they're smelly, I can't stand riding into clouds of dust particles when I'm on my bike."

Council member Drew Combs said he's "not unsupportive" of

the ordinance, but that the city needs to focus on outreach and helping those most impacted by both the ordinance and the fumes of gas-powered landscaping equipment. Combs asked for a focus on engaging those who work in landscaping.

"The person who has it strapped on their back is suffering the most ill effects, but because of their ... economic station, that's what they have to do," Combs said. "In some generations past in my family, that was my grandfather. That was my great-grandfather."

The City Council suggested that city staff take part in bilingual outreach from December to April, working with smaller gardeners and residents who can work with their landscaping crew before enforcement begins, but no formal vote was taken. ■

Email Staff Writer Cameron Rebosio at crebosio@almanacnews.com.

CRIME BRIEFS

Woman arrested following Menlo Park home invasion

A call to police from a Menlo Park resident who had found an intruder in her home Saturday morning, Nov. 19, led to the arrest of a woman tied to thefts in three cities, Menlo Park Police stated in a press release.

At about 6 a.m., a resident in the 300 block of Felton Drive entered her kitchen to find an unknown woman standing in front of the open refrigerator. The resident confronted the intruder, who then left the residence, police stated.

The resident took photographs of the woman while she was gathering some of her belongings. Upon review of the photographs, the resident noticed what appeared to be a handgun among the woman's belongings, police stated. Around 6:51 a.m., the resident called the police. Though officers searched the area for the suspect, they did not locate her, but information about her was shared with neighboring law enforcement agencies.

At about 9:59 a.m., San Mateo County Sheriff deputies found the suspect in Redwood City, in the area of Second and Fair Oaks avenues. She was identified as a 40-year-old female from Fresno. Deputies found a realistic replica Glock 17 pellet gun on her, and she was transported to the Menlo Park Police Department, the press release stated.

The Atherton police notified Menlo Park police that they

had also received a report of a burglary that had occurred less than 2 miles from Felton Drive. A further search of the suspect's property revealed items allegedly taken during the burglary in the town of Atherton and items from other recent thefts in Menlo Park and Palo Alto, police stated.

Additionally, the woman was found to be under the influence of narcotics and in possession of narcotics paraphernalia. She was taken into custody and booked into the San Mateo County Jail for first-degree residential burglary, receiving stolen property, possession of drug paraphernalia and being under the influence of a controlled substance.

—Almanac staff

Man robbed, assaulted with pistol during date

Police in Menlo Park are investigating an armed robbery and assault that occurred on the 3600 block of Haven Avenue, east of U.S. Highway 101, on Nov. 18.

Officers responded to the scene at 5:55 p.m., where they found a 35-year-old man injured from being struck by a pistol as well as being punched and kicked.

A preliminary investigation determined that the victim had met up with a woman whom he had met on an online dating app. The victim and the woman were sitting in his parked car when two men approached the car, hauled the victim from the vehicle and assaulted and took cash from him.

The woman willingly fled the

scene with the assailants.

The assailants are described as Black adults, in their early 20s, wearing face masks. One was wearing all black clothing while the other was wearing a red jacket. One of the men was armed with a handgun. The female is being described as white or Hispanic, in her early 20s, wearing reading glasses, gray sneakers and a white dress with black designs on it.

The victim was treated at a local hospital for his injuries and then released.

Menlo Park police officers and detectives are actively investigating this case. The department asks that anyone with information regarding this case or who witnessed the incident call the department at 650-330-6300 or the anonymous tip line at 650-330-6395.

Firearms investigation leads to eight arrests

A joint operation by multiple law enforcement agencies around the Bay Area resulted in eight arrests last week for charges related to allegations of firearms possession and gang activity, San Francisco police said in a Nov. 18 press release.

The operation was initiated by the San Francisco Police Department Community Violence Reduction Team, which seized several firearms from an East Palo Alto residence in April of this year.

A months-long investigation into the weapons and multiple

crimes around the Bay Area identified several suspects living in multiple jurisdictions.

On Nov. 16, seven search warrants were simultaneously executed by law enforcement.

Amari Green, 18, Xavier Garcia, 18, and Daniela Eaton, 36, were all arrested in San Francisco.

Ajay Balaoro, 25, was taken into custody in Vallejo, Reno Fiapoto, 23, was arrested in Fairfield, along with another person who allegedly had other

outstanding warrants.

Ramone Fiapoto, 21, was arrested in East Palo Alto, and Tahmon Wilson, 20, was taken into custody in Richmond.

Five of the suspects face charges related to alleged gang activity and weapons possession, while Reno Fiapoto and Ramone Fiapoto were booked into San Mateo County Jail on outstanding warrants.

—Bay City News Service

REAL ESTATE Q&A

by Monica Corman

Market Activity Is Not Spread Evenly



Dear Monica: My property has been on the market since summer and although we have reduced the price twice, it has not sold. What would you recommend we do? Bart J.

Dear Bart: Generally the market everywhere on the Peninsula is quite active if the property is well priced and in move-in condition. Buyers don't want to be faced with lots of work to do after they move in. Also Buyers may consider your property "stale" meaning it has been on the market a long time.

You could take your house off the market at the end of the month and give it a rest until the new year when a new set of buyers will be looking to buy, many of whom will not have seen your home. Take this time to perk up the property, including the price, if it needs it. Be sure and keep an active listing agreement with your agent so she/he can quietly market the property even if it is off of MLS. It's not uncommon for properties to sell this way.

Contact me at monica@monicacorman.com: Office: 650-465-5971, COMPASS. WSJ Nationally Ranked. Real Trends Bay Area Top 100 Agents

A change in nature

After 35 years, Nature Gallery owner Carol Garsten is closing up shop

By Emily Margaretten

With a warm smile and greeting, Nature Gallery owner Carol Garsten welcomed visitors into her Los Altos store on a recent afternoon, drawing attention to a curated collection of fossils, geodes and minerals that sparkled from brightly lit glass cases, decorative bowls and ornate stands.

“I think there’s perfection in the imperfection,” Garsten said. “The Japanese call it wabi-sabi. A geode, for example, is just a rock that looks like nothing. And then inside, it’s filled with beautiful gems. So, it’s a metaphor for always looking for the beauty within.”

‘It’s time to spread my wings and do something else’

CAROL GARSTEN,
NATURE GALLERY OWNER

For 35 years, Garsten has shared this philosophy with customers, selling geologically inspired sculptures, jewelry and furniture decor. But this venture will soon end, as Garsten plans to retire and close her shop at 296 State St. on Dec. 24.

“It’s time to spread my wings and do something else,” Garsten said. “Thirty-five years is a long time to be doing one thing.”

Trained as a filmmaker at the University of Southern California, Garsten did not expect to pursue a career in retail. But this changed when her mother, Norma Tager, became ill with stage 4 ovarian cancer. To help with the stress of the diagnosis, Tager developed an interest in the healing energy

of crystals, using them as a form of adjunctive therapy.

Tager recovered from ovarian cancer, which Garsten attributed to experimental medical treatments. She also shared Tager’s belief that the crystals played a role in the healing process.

“It was a way to find peace and calm through connecting with the crystals,” Garsten said.

At Tager’s urging, Garsten decided to leave the film industry and join her mother in San Luis Obispo to become a partner in her new store, Nature Gallery.

“It was like on a wing and a prayer because we didn’t really have anything,” Garsten said, recalling that they displayed crystals on card tables when the store first opened in 1987.

Garsten and Tager eventually relocated to the Bay Area in 1994 to be closer to medical professionals, a decision that also coincided with the Silicon Valley dot-com era. They leased a small space in Palo Alto’s Town & Country Village, attracting high-profile clients from the tech industry. It was a heady time for Garsten but also one of sadness, as Tager died of breast cancer in 1996.

For 17 years, Garsten ran Nature Gallery from Town & Country Village, commuting to work by bicycle and enjoying the close-knit feel of the area. This changed, however, when new landlords took over the shopping center. Nature Gallery did not fit in with their corporate model, Garsten said, so she did not renew her lease.

Garsten decided to relocate Nature Gallery to Los Altos, a place where clients could easily visit from Palo Alto and where she could retain the sense of community that she created in Town & Country Village.



Magali Gauthier

Pieces on display at Natural Gallery in Los Altos on Nov. 3.

“That’s the essence of what retail has to be now, coming out of the internet economy. It’s connecting with customers, really knowing people,” Garsten said.

Garsten’s focus on interpersonal relationships paid off during the pandemic. Unlike many other small business owners, Garsten did not take out loans to stay financially solvent. Nature Gallery actually profited in 2020 and 2021. Garsten attributed her success to her pivot to online retail while also maintaining a sense of human connection with customers.

Whenever possible, she delivered packages personally to her clients’ homes, ringing doorbells and conversing with them from a safe distance.

“Later people came back and told me nobody was doing that,” Garsten said. “And it felt really heartfelt to them, that I came out to visit with them.”

Garsten’s email newsletters, sent out to approximately 3,000 people, also reflects her



Magali Gauthier

Nature Gallery owner Carol Garsten inside the gallery in Los Altos.

connective touch. Normal retail open rates are 18% to 20%, Garsten said, whereas her emails have open rates of 45% to 50%.

“It’s because I want to tell stories. I want to show beautiful pictures, and I want to send out communications and stay connected in a way that makes

people happy,” Garsten said.

Although Garsten holds out hope that someone will buy Nature Gallery and keep it open, she plans to move on regardless. Garsten intends to remain fully immersed in community events in Los Altos and Palo Alto, though. With an eye toward marketing, Garsten plans to mentor other business owners, drawing on her experiences to help them negotiate the connective spaces of online and in-person retail.

“It’s a little bittersweet, this change,” Garsten said.

She nodded to two wooden chairs near her desk that came from the first Nature Gallery in San Luis Obispo.

“When my mom passed, she passed the torch. And I’m ready now to pass the torch on to the next owner. But if that’s not meant to be, so be it. It’s time for my next chapter.” ■



Magali Gauthier

A pendant made of Australia boulder opal and ammolite fossil from 87Rocks, Nature Gallery owner Carol Garsten’s brand, at the gallery.



Magali Gauthier

An amethyst geode with quartz and calcite at Nature Gallery in Los Altos.

Email Editorial Intern
Emily Margaretten at
emargaretten@paweekly.com.

Portola Valley district trustee signs off after three years on the board

By Angela Swartz

Portola Valley Elementary School District governing board members said goodbye on Nov. 17 to trustee Anne Fazioli-Khiari, who decided over the summer not to run for reelection this fall.

Fazioli-Khiari, who has lived in Portola Valley with her husband and two children since 2010, joined the board in 2019. Before serving on the board, she was chair of the \$49.5 million Measure Z facilities bond campaign, chair of the Citizens' Bond Oversight

Committee, PTO cultural affairs coordinator and an AYSO board member.

"As a lifelong advocate for public education, Anne has supported the school district in many roles, from field trip driver and classroom volunteer to her present role as clerk of the governing board," according to a district Instagram post. "Her extensive involvement with the school



Anne Fazioli-Khiari

district and community at large allowed her to gain a keen understanding of the expectations and aspirations of our community."

The post continued by offering her best wishes and "many, many thanks to Anne for the hard work, countless hours, and sound and fair minded decision making and guidance. She will be missed."

Fazioli-Khiari said she was glad to serve the community during such a critical time. She said that her role on the board over the last three years, with the COVID-19 pandemic, major

construction and other issues facing the district, has not been far behind the challenges of her experience volunteering for the Peace Corps in Panama.

Trustee Aimee Armsby complimented Fazioli-Khiari on her efficiency, kindness and non-nonsense attitude.

"To be able to combine all those things in one person is pretty remarkable," she said.

Helen Wolter, district representative for State Sen. Josh Becker, D-Menlo Park, commended Fazioli-Khiari for her service to the board on behalf of Becker.

In 2019, Fazioli-Khiari was appointed by the board in lieu of an election because the number of qualified candidates in the race was equal to the number of open seats.

Fellow trustees Armsby and Bob Bauer opted to run for reelection and will stay in their seats in December. They will be reappointed at a Dec. 15 meeting since the election was canceled because it was an uncontested race. ■

Email Staff Writer Angela Swartz at aswartz@almanacnews.com.

EMISSIONS

continued from page 5

54% for water and space heating, respectively, according to a 2019 study published in The Electricity Journal.

State officials voted in September to ban the sale of new gas furnaces and water heaters beginning in 2030.

"As a mother worried about the impact of climate change for my toddler, it is immensely satisfying to see Atherton join the majority of the Peninsula in adopting a reach code," Miles Holland said. "There was no path for Atherton to hit its state-mandated emission reduction target while adding new methane gas infrastructure to the Town, so we've made a big first step in the right direction."

Miles Holland said she is in the midst of electrifying her home, and plans to replace her gas stove with an induction stove next month.

"I never thought I'd know so much about the amps/volts of my appliances," she said.

Portola Valley changes to green code met with some resistance

Portola Valley, on the other hand, is a town that opted to adopt a green building code that includes few exceptions. On Oct. 26, its Town Council gave the go-ahead to require all new construction to be all-electric. The all-electric requirements apply to all newly constructed buildings and gas-fired outdoor

amenities (such as outdoor kitchens, grills, pools, spas, fireplaces, fire pits and outdoor heaters).

It also requires major remodels to be all electric, and adds some new requirements for the installation of a heat pump air conditioner on the replacement, upgrade or relocation of an air conditioner, as well as pre-electrification requirements when replacing or upgrading the main electrical panel.

However, residents will not be required to replace their failing gas-powered devices with electric ones under this reach code. Owners of new construction projects which have already received planning approvals may apply for exemption from new green building amendments.

The town had explored an all-electric reach code in 2020, but work on the ordinance was disrupted by the COVID-19 pandemic.

Some praised the town for taking action that will have an impact on climate change.

There was also resistance from residents who are worried about the costs of requiring electric appliances. Some even suggested the town code changes be put up for a resident vote or a referendum.

Resident Dale Kane called the code change Draconian and said it could compromise the character of a remodel or new build. He said he's wanted to install two natural gas fireplaces for their ambiance and safety. He also wants a backup option

because of the common power outages in town. (Although gas fireplaces generally work during a power outage, gas stoves and ovens will generally not work because gas appliance ignition is electric, according to PCE and the Sacramento Bee.)

Others asked the town to take a more gradual approach, with one resident calling it "too much, too fast" for the town.

"I do agree with eventual electrification," said Nan Shostak, a geologist and a member of the Geologic Safety Committee. "I do think it's going to be a drop in the bucket compared with coal-powered power plants in China for instance. We are much safer with the gas generator than without. New construction and remodeling projects deserve the option of having some gas. We are thinking of going all-electric too soon."

Council member John Richards said there is a misunderstanding of how this might affect costs. For example, in a new construction project, putting in an electrical system without having to put in gas is going to cost you less, he said. (A Peninsula Clear Energy report said that, for example, building all-electric thermal systems in a home cost a little under \$19,000, while building mixed fuel systems costs about \$29,000 on average.)

For single-family homes in general, operating costs are about the same with all-electric, said Reyes. If the home has solar power, operating costs are much lower, he said.

"It's time to pick some

low-hanging fruit and move ahead," he said.

Council member Jeff Aalfs emphasized that burning natural gas inside homes actually results in "really unhealthy, and perhaps even dangerous, air."

Natural gas and propane stoves can release carbon monoxide, formaldehyde and other harmful pollutants into the air, which can be toxic to people and pets, according to the California Air Resources Board. Using a wood stove or a fireplace to cook can cause high levels of indoor air pollution from smoke.

Gas stoves in homes increase children's asthma risk by 42%, the PCE report states. Total electric living eliminates the risk of carbon monoxide poisoning and induction ranges automatically turn off when not in-use, eliminating a leading cause of house fires, according to the report.

Mayor Craig Hughes noted that the town is simply "doing what other towns in the area have already done."

Council member Maryann Derwin described it as a difficult, but necessary change.

Other local green building codes

A slew of local cities adopted reach codes to limit the use of gas in 2019.

Palo Alto adopted an ambitious building code amendment last month that requires every new building to be all-electric. It expands on the existing all-electric requirement, which the council adopted in 2019 and which only applies to low-rise

residential buildings, with exceptions for ADUs.

The requirement applies to water heaters and space heaters, and heating, ventilating and air conditioning (HVAC) systems, as well as for major remodeling projects where 50% or more of the walls are being replaced or razed or where 50% or more of roof structural framing area is replaced.

In 2019, Mountain View's reach code process led to a bold, and rather controversial, ban on natural gas appliances in new homes, while this year's amendments mainly centered on bringing the city into compliance with new state requirements, and in a few cases, recommendations from local agencies like Silicon Valley Clean Energy, the community choice energy program that serves multiple Bay Area cities including Mountain View.

Menlo Park adopted reach codes in 2019 that required electricity as the only fuel source for new commercial buildings and low-rise residential buildings starting in 2020.

East Palo Alto adopted reach codes in 2019 to limit gas devices in buildings, including commercial and residential spaces. It exempts ADUs and 100% affordable housing.

Woodside officials declined to consider these building reach codes in October, said Town Manger Kevin Bryant in an email. ■

Email Staff Writer Angela Swartz at aswartz@almanacnews.com.

CRASH

continued from page 5

said on Monday, Nov. 21, in a statement.

Gregory Ammen, 44, and Google employee Grace Spiridon, 42, Palo Alto natives and residents of San Carlos,

were in the other car in the collision and died in the crash. Ammen and Spiridon's 7-year-old twin daughters were injured in the crash, as were two passengers in the teen's car.

The 17-year-old was arrested on Nov. 18 and booked into

the San Mateo County Youth Services Center, after spending two weeks at Stanford Hospital, according to officials. Harrison was arrested at his residence on Nov. 21 and was booked into the San Mateo County Jail, police said.

A police investigation

determined that two cars were engaged in a speed contest that caused the fatal accident. The drivers are facing two counts of second degree murder and, if convicted, could serve 15 years to life in prison, police said.

Anyone with information

about the crash is asked to contact the Investigations Unit of the Redwood City Police Department at 650-780-7111. ■

Email Staff Writer Leah Worthington at lworthington@rwcpulse.com.



Magali Gauthier

Children use the skating rink at the Après Village & Skate Rink at the Four Seasons Silicon Valley hotel in East Palo Alto on Nov. 18.

A European winter wonderland

Four Seasons transforms outdoor terrace into holiday pop-up with chalets, fondue, and an ice skating rink

By John Bricker and Emily Margaretten

On a recent Friday evening, a group of children skated around an ice rink surrounded by holiday lights and frosted Christmas trees as white flakes swirled around them overhead. Surrounding the rink, small groups of friends and family sipped mulled wine and dined on cheese fondue, enjoying the ambiance of wooden chalets where fire pits burned brightly. Although this scene sounds

more like a mountain ski resort than a Peninsula destination, this winter wonderland is taking place every weekend at Après Village & Skate Rink in East Palo Alto during the holiday season.

This year is the third time since 2019 the Four Seasons Silicon Valley hotel has hosted the seasonal pop-up on its outdoor terrace, transforming the space with semi-private wooden chalets, holiday foods, a sweet shop, fake snow and other holiday decor. This season, the European-style Christmas village includes a skating rink where 25 guests at a time can reserve a 45-minute session on the ice.

Adora Manalo, the hotel's general manager, said it's common for families to come to Après Village to take their holiday photos inside the winter sleigh and snow globe or in front of the 18-foot-tall Christmas tree, where a machine blows imitation snow flurries as an added touch.

"It's hard to believe we're in Palo Alto," said Joty Brar, a resident of the Emerald Hills neighborhood in unincorporated San Mateo County. Her husband, Nav Hayer, agreed. They came to celebrate her birthday as a family occasion, bringing along their two daughters, ages 4 and 5, for dinner and an evening of skating.

"Usually, our kids are tired of something after five minutes, but we've been here an hour now, and they're still happy," Hayer said, before returning to the rink to help his daughters.

Similarly, Roberto and Chelon Blanco traveled from San Jose to enjoy the experience of dinner and skating as a family, with their three children, ages 14, 12 and 10. Chelon learned about Après Village from her cousin's Instagram account and immediately booked a chalet, noting that the next availability wasn't until January.

"It's so cool to have this in the Bay Area. It's the same atmosphere as Tahoe but without the snow," she said.

Hotel manager Richard Lanaud, who was part of the creative team that launched the village concept, said many of the features here were inspired by memories of his childhood stays at resorts in the French Alps.

Let Your Holidays Sparkle with Kensington Senior Living Specialty Caregiver Resources

The holidays are just around the corner! We already feel the magic of the season and can't wait to spread some cheer. So please, let us infuse your holidays with sparkle and shine, good food and goodwill, wide smiles and warm hugs. Our doors are open to family and friends, and our team is ready to make your spirits bright, especially if you're caring for an older adult.

We know that amidst the joys of tradition and togetherness, caregiving responsibilities can become overwhelming and stressful. **We are here for you, eager to offer support, tips and guidance that will make it easier for you to enjoy the months ahead.**

As a best-in-class senior living provider with an uncompromising commitment to care and service, we are equipped to help you learn what to expect and how to prepare for caregiving during the holidays. We draw from decades of experience in independent living, assisted living and memory care, marked by dedicated leadership and expert teams.

KENSINGTON SENIOR LIVING HOLIDAY RESOURCES FOR CAREGIVERS
 Home for the Holidays Open House • Saturday, Dec. 3rd & Sunday, December 4th from 1pm-3pm
 'Tis the Season to Slow Down: A Workshop on Caring for the Caregiver • Tuesday, Dec. 6th at 3pm via Zoom • With Susie Sarkisian, Kensington Family Support Coach
 Navigating the Holidays with Your Loved One with Dementia • Wednesday, Dec. 14th at 3pm via Zoom • In Partnership with the Institute on Aging

We promise to love and care for your family as we do our own.
 Join us as we share knowledge and insights, designed with you and your holiday caregiving needs in mind.

KENSINGTON PLACE
 A Memory Care Community
 REDWOOD CITY
 — North Atherton —

To RSVP, contact Joan Newman, Executive Director, jnewman@kensingtonsl.com

To register, please scan the QR code or visit the events tab of our website.

2800 El Camino Real | Redwood City, CA 94061 | www.KensingtonPlaceRedwoodCity.com | (650) 363-9200

See SKATING, page 11

SKATING

continued from page 10

“We said, ‘It’s true that California is a magical place to live, but we are missing that snow feeling, that ski resort feeling,’” he said.

The staff worked together to create a ski resort atmosphere with heavy and warm comfort food and Christmas trees and lights.

Manalo said the skating rink seems to appeal to just about all of their guests, especially couples and families with young children.

Along with a sweet shop serving fresh doughnuts near the entrance, the pop-up features a full menu with family-style dishes like fondue and French *poutine* (cheese curds topped with a brown gravy) and desserts like made-from-scratch s’mores. All the items were designed to “bring the heart of the alps” to Après Village, chef de cuisine Eduardo Zerpa said. There’s also a bar that serves holiday-themed hot beverages like mulled wine.

Lanaud stressed that the menu evokes the mountainside, ski-resort atmosphere.

“The food and beverage aspect is really what puts it together and puts you in where



Magali Gauthier

Rylan Blanco, 12, races around the skating rink at the Après Village & Skate Rink at the Four Seasons Silicon Valley hotel in East Palo Alto.

you are,” he said.

Friends Victoria Most, from Oakland, and Anita Pidgeon, from Berkeley, were especially drawn to the decor and Alpine-inspired menu.

“We’re ladies who fancy Christmas,” Most laughed.

“We decided to try something new and kick off our holidays with a faux ski experience without having to actually ski,” Pidgeon said.

“The atmosphere is great,” Most agreed.

“And so is the food, which is surprisingly filling,”

Pidgeon added.

Zerpa said the menu is family-focused to encourage guests to linger and get the most out of Après Village.

“We want people to stay here and feel the warmth of the fire, feel the warmth of the food,” he said.

Along with featuring mostly hot cocktails, Lanaud said, Après Village’s emphasis on shareable meals makes for a cozy experience.

“It’s not your traditional restaurant where everybody is going to pick an appetizer and



Magali Gauthier

Roberto Blanco, left, and his wife Chelon Blanco, right, enjoy some drinks by an outdoor firepit in a chalet.

a main course,” he said. “One person at the table says, ‘What are we trying today?’”

Lanaud said he hopes to add a market where visitors can walk around and shop at outdoor boutiques.

“I don’t have everything drawn out on paper, but that is my next vision to bring (Après Village) one step closer to the perfection of a ski resort,” he said. “That’s what I’m missing.”

From now through Feb. 25, Après Village will be open to the public from 4 to 9 p.m. Fridays through Sundays. Reservations

are required. Skating sessions, which include the rental of a pair of skates, are \$30 for adults and \$20 for children between the ages of 6 and 12.

The village hosts private events during the week. Après Village’s chalets are sold out through the end of December, but terrace tables are still available. For more information and to reserve an evening at Après Village, go to bit.ly/ApreSkating. ■

*Email Editorial Assistant
John Bricker at
jbricker@paweekly.com.*



The Ladera Country Shopper Merchant’s Holiday Fair

Saturday, December 10th * 11 am-12:30 pm

3130 Alpine Road, Portola Valley, Ca 94028 *

~Plus~

Konditorei: Photos with Santa, 20 gift cards for first 20 customers and goody bags will be given out

Ladera Garden & Gifts: Holiday Planting

Alpine Optometry: Snow Globe Ornaments

Chase Bank: Cookies, drinks & gifts

Amigos Grill: Pinata

UPS Store: First 5 people receive a gift card

Almanac kicks off the annual Holiday Fund charitable drive

By Almanac staff

Lending a much-needed helping hand to those in crisis and strengthening our community have always been the aims of The Almanac Holiday Fund. The annual charitable giving drive is kicking off this week to support local nonprofits that serve children, families and individuals.

Donations from community members will enable Midpeninsula service organizations to bridge educational gaps, put food in hungry stomachs, ensure access to health care, step in with critically needed homeless services and more.

Every cent of every donation will go to these community agencies because The Almanac and its Holiday Fund partner, the nonprofit Silicon Valley



Community Foundation, are absorbing all administrative costs to run the fund. All donations are tax-deductible.

This year, the Holiday Fund is supporting the following local nonprofits: Boys & Girls Club of the Peninsula; Ravenswood Family Health Center; Ecumenical Hunger Program; Health Connected; LifeMoves; Literacy Partners; St. Anthony's Padua Dining Room; St. Francis Center; StarVista; and Upward Scholars.

Checks totaling more than

\$260,000 were handed out to representatives of 10 non-profit organizations.

Contributions to the Holiday Fund will be matched this year, to the extent possible, by generous community organizations, foundations and individuals, including the Rotary Club of Menlo Park Foundation, the William and Flora Hewlett Foundation and the David and Lucile Packard Foundation.

"It gives us great joy to connect donors with grantees so that so much good work can be done to make lives better," said Bill Johnson, president of the Embarcadero Media Foundation.

For more information about the Holiday Fund, go to AlmanacNews.com/holiday_fund. To give a donation online, go to embarcaderomediafoundation.org/holiday-fund/



Adam Pardee

Visitors to St. Anthony's Padua Dining Room receive lunch.

menlo-park. Checks can be made payable to Almanac Holiday Fund and sent to 450 Cambridge Ave., Palo Alto 94306.

The Holiday Fund campaign will run through early January. Grants will be awarded in the spring. ■

You're Invited

AVENIDAS HOLIDAY OPEN HOUSE

Friday, Dec. 9th from 2-4pm

Bring your friends and grandkids to this free, fun event at Avenidas and enjoy:

- Decorating your holiday cookie!
- Shopping at the Club Avenidas Holiday Sale (handmade hats, scarves, gloves, sweaters baby gifts & more!)
- Sampling tasty treats from The Redwood by Chef Julien!
- Watching a Dot Art Demo!
- Trimming the tree!
- Warming up with hot cocoa, cider, coffee or tea!
- Designing your own ornament to take home!
- Spinning the prize wheel to see what you've won!
- Saving 10% if you purchase or renew your Avenidas Membership at the event!

*Avenidas Village memberships excluded

If you have questions, please call (650) 289-5400

Happy Holidays

Thanks so much for all your support!

Restorative & Cosmetic Dentistry

We are thrilled and honored to once again be voted "Best Dentist" in 2022 after having been awarded the "Hall of Fame" designation for our wins from 2013 to 2018.

Thank you!

We are pleased to announce expanded hours of service Monday-Friday and are accepting new patients.

For patients with no insurance we can now offer an attractive "membership plan" to help control dental expenses.

Christine Hansen, DDS
416 Waverley Street, #A,
Palo Alto, CA 94301
(650) 326-3290

www.dentistpaloalto.com

TILES

continued from page 1

who purchased the mural, but Louis Briones, executive director of the festival, said they don't have records that date back that far.

Wagner, who lives in Hillsborough, said with the amount of time that's passed he doesn't remember the address of the carpeted horse barn near Interstate 280's Farm Hill Road exit in Woodside, where they installed the mural. He said it was a man who wanted to decorate the barn, and he's not sure if the person is still alive.

So far, he hasn't been able to find the owner of the work, but hopes to reunite them with the mural.

Wagner Granizo's other works

Guillermo Wagner Granizo, who passed away in 1995, created a number of murals that incorporate the Bay Area. His Monterey mosaic, which is about 11 feet by 45 feet, is mounted to the outside of the Monterey Convention Center.

He created a Panorama of San Francisco in 1980. His mural of the Spanish ship "San Carlos" is in the garden of Mission Dolores, and he also has murals in El Faro Restaurant in San Francisco.

For more on the artist, visit granizoart.com. ■

Email Staff Writer
Angela Swartz at
aswartz@almanacnews.com.

Give back locally



WITH A GIFT TO THE HOLIDAY FUND

Contributions to the Holiday Fund go directly to programs that benefit Peninsula residents. Last year, Almanac readers and foundations contributed \$309,000 from more than 170 donors for the 10 agencies that feed the hungry, house the homeless and provide numerous other services to those in need.

Contributions to the Holiday Fund will be matched, to the extent possible, by generous community organizations, foundations and individuals, including the Rotary Club of Menlo Park Foundation, the William and Flora Hewlett Foundation and the David and Lucile Packard Foundation. No administrative costs will be deducted from the gifts, which are tax-deductible as permitted by law. All donations to the Holiday Fund will be shared equally among the 10 recipient agencies listed on this page.

DONATE ONLINE:
almanacnews.com/holiday_fund

The organizations below provide major matching grants to the Holiday Fund.



Rotary Club of Menlo Park

The William and Flora Hewlett Foundation

The David and Lucile Packard Foundation

Boys & Girls Club of the Peninsula

Provides after-school academic support, enrichment, and mentoring for 1,800 low-income K-12 youth at nine locations across Menlo Park, East Palo Alto, and the North Fair Oaks neighborhood of Redwood City.

Ecumenical Hunger Program

Provides emergency food, clothing, household essentials, and sometimes financial assistance to families in need, regardless of religious preference, including Thanksgiving and Christmas baskets for more than 2,000 households.

Health Connected

Serves over 5,000 students and their families each year through comprehensive sexual health education programs. Students learn to have ongoing communication with parents and to make informed decisions that will apply to their lives, now and in the future.

LifeMoves

Provides shelter/housing and supportive services across 18 sites in Silicon Valley and the Peninsula. Serves thousands of homeless families and individuals annually on their path back to permanent housing and self-sufficiency.

Literacy Partners

Supports literacy programs and projects through fundraising and community awareness. Helps community members enhance their reading, writing and related skills and education to improve their economic, professional and personal wellbeing.

Ravenswood Family Health Center

Provides primary medical and preventive health care for all ages at its clinic in East Palo Alto. Of the more than 17,000 registered patients, most are low-income and uninsured and live in the ethnically diverse East Palo Alto, Belle Haven, and North Fair Oaks areas.

St. Anthony's Padua Dining Room

Serves hundreds of hot meals six days a week to people in need who walk through the doors. Funded by voluntary contributions and community grants, St. Anthony's is the largest dining room for the needy between San Francisco and San Jose. It also offers take-home bags of food, as well as emergency food and clothing assistance.

St. Francis Center

Helps low-income, working families become self-supporting members of the community by providing long-term solutions through educational programs for children and parents, as well as after-school programming at Siena Youth Centers. St. Francis Center also provides housing, food and clothing services to address short-term needs.

StarVista

Serves more than 32,000 people throughout San Mateo County, including children, young people and families, with counseling, prevention, early intervention, education, and residential programs. StarVista also provides crisis intervention and suicide prevention services including a 24-hour suicide crisis hotline, an alcohol and drug helpline, and a parent support hotline.

Upward Scholars

Upward Scholars empowers low-income adults by providing them with financial support, tutoring, and other assistance so they can continue their education, get higher-paying jobs, and serve as role models and advocates for their children.

Please consider donating online, which enables your gift to be processed immediately. The secure website is:
almanacnews.com/holiday_fund

Enclosed is a check for \$ _____

Name _____

Business Name _____

Address _____

City/State/Zip _____

Email _____

Phone _____

I wish to designate my contribution as follows: (select one)

In my name as shown above

In the name of business above

OR: In honor of: In memory of: As a gift for:

 (Name of person)

The Almanac



The Almanac
 Holiday Fund
 2022

All donors and their gift amounts will be published in The Almanac unless the boxes below are checked.

I wish to contribute anonymously.

Please withhold the amount of my contribution.

Please make checks payable to:
 Embarcadero Media Foundation

Send coupon and check to:
The Almanac Holiday Fund
450 Cambridge Ave.
Palo Alto CA 94306

The Almanac Holiday Fund is sponsored by the Embarcadero Media Foundation and Silicon Valley Community Foundation. Both are 501(c)(3) tax-exempt charitable organizations, allowing your donation to be tax-deductible to the fullest extent of the law.

DONATE ONLINE: almanacnews.com/holiday_fund

Judge sentences Elizabeth Holmes to over 11 years in prison

Theranos founder ordered to surrender to federal custody on April 27

By Susan Nash/Bay City News Foundation

A federal judge sentenced Theranos founder and CEO Elizabeth Holmes to 11 years and three months in prison on Friday, Nov. 18, citing the need for investors in Silicon Valley startups to be able to take “risks free from fraud.”

U.S. District Judge Edward Davila ordered Holmes to surrender to federal custody on April 27, 2023, apparently taking into account the fact that Holmes is pregnant with her second child.

Holmes was convicted of

four counts of wire fraud based on false and misleading statements she made to investors in Theranos, the now-defunct blood testing company that was based in Palo Alto.

She was acquitted of four counts of wire fraud related to tests given to actual patients. The jury did not reach a verdict on three remaining counts involving investors.

The sentencing capped a four-hour hearing during which prosecutors had pushed for a 15-year sentence. Lawyers for Holmes, who is reportedly living in Woodside, requested a sentence of 18 months of home confinement.

The packed courtroom heard an emotional appeal from Alex Shultz, son of the late George Shultz, a former Theranos board member, and father of Tyler Shultz, a Theranos employee who had tried to alert his grandfather to the concealment going on at the company and the defects in its blood-testing technology.

Holmes, Alex Shultz said, had “desecrated his family.”

Holmes spoke last, telling the judge that she loved Theranos and that the company was her “life’s work.”

“I am so, so sorry,” Holmes said. “In looking back there are so many things I would do



Harika Maddala/ Bay City News

Elizabeth Holmes, former CEO of Theranos, arrives at the federal courthouse in San Jose, Calif., on Oct. 1, 2021.

differently if I had the chance.”

She told the judge that going forward she just wants to contribute by helping “one person at a time.”

Explaining his decision, Davila harkened back to the

agricultural days of Silicon Valley, then talked about the change brought about when the area became known for its innovation.

“The world relies on us,” Davila said. “This is a fraud case where an exciting venture went forward ... only to be dashed by misrepresentations, hubris and just plain lies.”

Holmes’ defense team told the judge that they plan to file papers asking that Holmes be allowed to remain free on bail until an appeal of the judgment is decided. ■

Margy Giles

May 5, 1926 – November 4, 2022

Resident of Portola Valley

Memorial service at Menlo Church, 950 Santa Cruz Ave., Dec. 1, at 1:30p.m. Please visit spanglermortuary.com/obituary/marjorie-giles



PAID OBITUARY

OBITUARIES

Local residents who died recently include **Dianne “Denie” McDonnell**, 94, a former Portola Valley resident, on Nov. 7; and **Marjorie “Margy” Giles**, 96, an Portola Valley resident, on Nov. 4.

To read the full obituaries, leave remembrances and post photos, go to Lasting Memories at almanacnews.com/obituaries.

THE SIX FIFTY
.COM

THE BEST OF
WHAT TO EAT,
SEE AND DO
IN SILICON
VALLEY.

check us out.
subscribe to our newsletter.
follow us on facebook and instagram.

THE SIX FIFTY .COM

Shots fired at Stanford Shopping Center hit steakhouse and parked car

By Sue Dremann

Palo Alto police are investigating an apparent drive-by shooting on Nov. 21, in which a person fired at least two rounds from a car, striking a window at Fleming's Prime Steakhouse and the window of an unoccupied vehicle in the parking lot at Stanford Shopping Center, police said. No one was injured.

The incident and large response by Palo Alto police led to a tense scene for more than two hours, as mall security guards told store employees to lock their doors and officers closed down El Camino Real during a busy rush hour. One store worker reported seeing people running in panic.

Police received a call at 4:25 p.m. from an employee of Fleming's, located at 180 El Camino Real, stating that the building had been struck by a bullet, according to a press release. Customers were inside the restaurant at the time.

Officers found a large plate glass window near the front door had been hit by a bullet, fracturing the glass.

Police also discovered two handgun bullet casings on the east side of the 100 block of El Camino Real. A witness reported seeing a person extending a handgun out the driver's window of a black Chevrolet Camaro as it headed north on El Camino Real in front of the restaurant. The witness could not describe the shooter, police said.

Officers closed the 100 block of El Camino Real in both directions to process the scene, reopening the road by 6:45 p.m.

Osvaldo Jimenez, an employee at the Pinkberry frozen yogurt shop, said he was just arriving for his shift at the store shortly after the incident.

"There were cops in cars on every corner" of El Camino Real in the vicinity of the shopping center. "People were waiting a half an hour to drive out of the area because the exits on El Camino were

blocked off."

Nadine Rossetto said she has "never seen anything like this" in her 40 years of living in Palo Alto. She's a seven-year employee at the nearby Anthropologie clothing store.

At one point, all the businesses at the mall were closed, except for Macy's. Some started to reopen soon after traffic resumed on El Camino Real.

At Pinkberry, one of the stores that reopened, employee Christine Thompson said they followed instructions from shopping center security personnel, who told store workers to lock their doors, turn off the lights and stay indoors.

"We also decided to turn off the music so we could hear if anything was happening," she said.

"It put me in a panic, especially when people started running," she said.

The shutdown lasted about 45 minutes, she said.

But when Jimenez arrived, he said he saw people sitting down or walking fast, but there was no panic.



Sue Dremann

Palo Alto police investigate a shooting in which one round hit a glass window at Fleming's Prime Steakhouse in Palo Alto on Nov. 21.

Well after the shooting, police received a secondhand report that someone inside the shopping center thought they had seen a person wearing a holster on their belt. The report didn't indicate whether they also saw a firearm. Officers searched the mall as a precaution.

There was no known motive or target identified as of Monday evening, police said. Officers secured the scene, and there was a large police presence to ensure public safety,

according to police.

Detectives are actively investigating the case. Anyone with information about this incident is asked to call the Palo Alto Police Department's 24-hour dispatch center at 650-329-2413. Anonymous tips can be emailed to paloalto@tipnow.org or sent by text message or voicemail to 650-383-8984. ■

Email Staff Writer Sue Dremann at sdremann@paweekly.com.

Nearly 20% of San Mateo County residents can get a free pass for county parks

Board of Supervisors OKs Mariposa program to provide low-income residents with free annual passes

By Olivia Wynkoop / Bay City News

All San Mateo County residents will soon be able to access the county's 16,000 acres of parkland after the Board of Supervisors unanimously voted Nov. 15 to give low-income families and individuals annual County Park passes.

Nearly 20% of all county residents are eligible for public assistance programs for resources like health care, shelter and food. They will also soon be able to obtain an annual pass for free under what is being called the Mariposa Program.

"Every resident of San Mateo County deserves the opportunity to enjoy our wonderful parks, no matter their income," board President Don Horsley said in a statement. "The benefits of parks and just being outdoors are well known. Time in nature is healing and contributes to overall health and well-being."

The San Mateo County Human

Services Agency will work alongside the San Mateo County Parks Department to enroll the 166,000 individuals who are eligible.

The decision followed recommendations set by an ad hoc subcommittee, which formed in December to find ways to make the San Mateo County Parks system more accessible to residents who do not visit them.

"The true beneficiaries will be the young people who will be able to enjoy our parks that offer so many adventures and fun activities," said Supervisor Carole Groom in a statement. "Our goal is to set them up for a lifetime of experiences in the outdoors."

Supervisors also unanimously passed legislation that raises the cost of an annual parks pass from \$60 to \$72 — the cost of two additional park visits per year — so the parks department can absorb the added costs of the Mariposa Program and fund new youth programs. The increased fee will be effective next January.

Camping fees at Memorial County Park have also been split between resident and nonresident rates. Effective May 2023, tent camping will cost \$40 for residents and \$45 for nonresidents, and trailer camping will cost \$45 for residents and \$50 for nonresidents. ■

Employment

The Almanac offers employment advertising.

To learn more or get a quote, please call 650.223.6597 or email digitalads@paweekly.com.

The Almanac
Holiday Fund 2022

Donate online:

almanacnews.com/holiday_fund



Where to watch the 2022 World Cup on the Peninsula

Grab your vuvuzelas and head to these local bars and restaurants

By Julia Brown

November is typically a busy time of year in the sports world; it's a critical time for college football teams hoping to be bound for a bowl game as the end of the season nears, past the halfway point in the NFL regular season and weeks into the NHL and NBA seasons.

This year, the World Cup has joined the fall lineup for the first time. With Qatar as the host city, moving the World Cup to November was done to avoid the blistering summertime heat. Matches run through Dec. 18, and they'll start in the morning (and in some cases the wee hours of the morning) Pacific time.

For those looking to watch games in a pub with fellow fans to those looking for an excuse to duck out of a family-filled house over Thanksgiving weekend, we've put together a list of Peninsula bars and restaurants where you can watch the World Cup. Grab a friend, find your vuvuzela (OK, maybe leave that at home for patrons' sake) and get ready for some football.



Vivian Wong

The Rose & Crown Pub in Palo Alto is adorned with English flags and scarves from European sports teams.

Tacolicious, Palo Alto: Tacolicious will be showing all U.S. and Mexico games, with doors opening half an hour before the start of matches. The

Palo Alto location will be serving up sopesitos for the occasion, plus micheladas con camerones and happy hour-priced margaritas in addition to its usual

offerings.

Tacolicious, 632 Emerson St., Palo Alto; tacolicious.com. Instagram: @tacolicious.

American Bull Bar & Grill, Burlingame: The restaurant and bar will stick to its normal operating hours (open 9 a.m. weekends, 11 a.m. weekdays) and show games after they open. Located in Burlingame Plaza on El Camino Real, American Bull currently has 12 beers on tap ranging from Russian River's Pliny the Elder to Barebottle's West Coast Splash, plus Golden State Mighty Dry cider. Find lumpia, barbecue ribs, burgers and more on the menu.

American Bull Bar & Grill, 1819 El Camino Real, Burlingame; 650-652-4908, theamericanbull.com. Instagram: @theamericanbullbar.

O'Neill's Irish Pub, San Mateo: Open daily from 11:30 a.m. to 1:45 a.m., the downtown San Mateo Irish pub offers food from neighboring restaurants Joy Sushi, 31st Union and Jeffrey's Hamburgers that your bartender will order and serve on-site. Drink selections include scotch, whiskey and beer (with Guinness on draft of course). O'Neills will televise games from 11:30 a.m. on.

See **WORLD CUP**, page 17

TOWN OF WOODSIDE 2955 WOODSIDE ROAD, WOODSIDE, CA 94062

PLANNING COMMISSION DECEMBER 7, 2022 6:00 PM

PURSUANT TO WOODSIDE TOWN RESOLUTION NO. 2022-7513, PLANNING COMMISSION MEETINGS WILL BE HELD AS HYBRID MEETINGS WITH THE OPTION TO ATTEND BY TELECONFERENCE/VIDEO CONFERENCE OR IN PERSON. MEMBERS OF THE PUBLIC THAT WISH TO ATTEND AND/OR PARTICIPATE IN A MEETING MAY DO SO IN PERSON OR BY JOINING THE ZOOM MEETING [HTTPS://US02WEB.ZOOM.US/J/86068472736](https://us02web.zoom.us/j/86068472736) PUBLIC COMMENTS WILL BE ACCEPTED BOTH IN PERSON AND VIA ZOOM MEETING. ANY EMAILS SENT TO SHARPER@WOODSIDETOWN.ORG WILL BE PROVIDED TO THE PLANNING COMMISSION PRIOR TO THE MEETING. IN THE EVENT THAT ANY MEMBER OF THE PLANNING COMMISSION PARTICIPATES IN A MEETING BY TELECONFERENCE OR VIDEO CONFERENCE, PURSUANT TO THE RALPH M. BROWN ACT, GOVERNMENT CODE SECTION 54953, ALL VOTES OF THE PLANNING COMMISSION SHALL BE BY ROLL CALL.

Join Zoom Meeting:

One tap mobile

+16699009128,86068472736
+12532158782,86068472736

Dial by your location

+1 669 900 9128
+1 253 215 8782
+1 346 248 7799
+1 301 715 8592
+1 312 626 6799
+1 646 558 8656

Meeting ID: 860 6847 2736

Weblink: <https://us02web.zoom.us/j/86068472736>

Remote Public Comments:

Meeting participants are encouraged to submit public comments in writing in advance of the meeting. The following email will be monitored during the meeting and public comments received will be read into the record.

Email: sharper@woodsidetown.org

PUBLIC HEARING

1. 988 Godetia Drive
Stephan Fitch

LDIV2020-0001; CEQA2020-0001

Planner: Sarah Filipe, Associate Planner

Presentation and approval, conditional approval, or denial, of a proposal for a Land Division (LDIV2020-0001) to divide one lot into two lots. The 988 Godetia Drive Land Division project proposes to divide one existing legal parcel of record (APN: 068-301-100) into two legal parcels (Parcel A and Parcel B). The existing property is 4.96 acres. Proposed Parcel A would be 1.97 acres and proposed Parcel B would be 2.98 acres. No development is proposed as part of this application. An Initial Study/Mitigated Negative Declaration (CEQA2020-0001) was prepared for the project pursuant to the California Environmental Quality Act (CEQA), and circulated for public review between October 13, 2022, through November 12, 2022.

Prior to taking an action to approve the project, the Planning Commission shall adopt the Final Mitigated Negative Declaration.

THE APPLICATION MATERIALS ARE AVAILABLE FOR PUBLIC REVIEW BY CONTACTING SARAH FILIPE AT SFILIFE@WOODSIDETOWN.ORG.

MAYOR

continued from page 5

tweet. "A real nail-biter as the weeks of counting wound on. Outspent by 25 to 1, attacked again and again with slander and hatred, and only lost by half a percent. My best wishes to the winners and to Portola Valley; looking forward to Dec. 14. ... And a huge thank you to all my supporters through the last nine years and the race itself."

A Political Action Committee raised \$40,000 to unseat Hughes and his colleagues, and endorsed Hufty, Hasko and Emergency Preparedness Committee Chair Dale Pfau.

Outside of PAC spending, Pfau spent the most of any candidate at about \$10,500, followed by Hasko (\$5,500), Hufty (\$3,000) and Hughes (\$2,000).

On Nov. 11, Hughes and Hufty were separated by 16 votes, narrowing to just a 6-vote difference by Nov. 15. The tides turned on Nov. 16, when Hufty's lead jumped to 20 votes.

As of Monday, Hasko led with 2,098 votes, or 29.6%, followed by Taylor at 1,527 votes, or 21.5%.

"I want to extend my congratulations to Judith and Mary," said Taylor in a message to his fellow candidates. "I look forward

to serving on the council with both of you alongside Sarah (Wernikoff) and Jeff (Aalfs). To Craig (Hughes) and Dale (Pfau), I look forward to continuing to work with you. Each of you has an incredible store of knowledge with respect to the issues facing the town. I ran on a platform of safety, civility and accountability. Now is the time to act on those principles."

Hasko, the top vote-getter, said Tuesday that she is "very honored" to receive such broad support from residents.

"I congratulate Mary Hufty and Craig Taylor on their election, and I know we are all ready to start the important work of addressing the challenges we face in our town," she said.

Pfau has trailed behind other candidates with 946 votes, or 13.3%, as Nov. 21.

The Town Council will swear in new members on Dec. 14.

The only ballots left to count countywide are challenged ballots plus a small number of conditional voter registration ballots. Challenged ballots may be cured by the voter through Dec. 6 at 5 p.m. ■

Email Staff Writer Angela Swartz at aswartz@almanacnews.com.

WORLD CUP

continued from page 16

O'Neill's Irish Pub, 34 S B St., San Mateo; 650-347-1544, oneillssanmateo.com. Instagram: @oneillsirish.

The Patio, Palo Alto: The restaurant and sports bar that claims to have the longest bar in town also has 21 TVs and a large outdoor seating area. The Patio serves cocktails, beer, wine and cider and has an extensive food menu with soups and salads, burgers and sandwiches and entrees like pan-seared salmon and pomodoro pasta. It opens at 11 a.m. every day, so head there for the late-morning matches.

The Patio, 412 Emerson St., Palo Alto; 650-322-2575, thepatiopa.com. Instagram: @thepatiopa.

Steins Beer Garden, Mountain View: The downtown Mountain View restaurant serves American cuisine made from scratch and has 31 beers on tap, as well as a drink menu full of craft cocktails, wine and spirits. Steins will have extended hours for the World Cup through Dec. 2: 11 a.m. to 10 p.m. Monday through Wednesday, 11 a.m. to



Michelle Le

Tacolicious in downtown Palo Alto will televise United States and Mexico World Cup games.

11 p.m. Thursday and Friday, 10 a.m. to 11 p.m. Saturday and 10 a.m. to 9 p.m. Sunday (closed on Thanksgiving Day). A limited menu will be served from 11-11:30 a.m.

Steins Beer Garden, 895 Villa St., Mountain View; 650-963-9568, steinsbeergarden.com. Instagram: @steinsbeergarden.

Strike Brewing Co., Campbell: The microbrewery and taproom is doing a special Pilsner collaboration with the San Jose Earthquakes and American Outlaws San Jose, the local chapter of a U.S. soccer supporters' group. It'll be open

Nov. 25 for U.S. vs. England and on Nov. 29 for U.S. vs. Iran. Their sister location in San Jose will also open early for select games. Peruse the website to see what's on tap, and if you can't decide on a beer you can buy a flight of 4-ounce tasters for \$14. Current selections range from their West Coast IPAs like Pine Tar Incident to Mango Ball, a sour ale with mangoes.

Strike Brewing Co., 469 E Campbell Ave., Campbell; 408-796-7810, strikebrewingco.com. Instagram: @strikebrewingco.

The Sports Page, Mountain View: A classic sports bar right

off Highway 101 in Mountain View, The Sports Page will open as early as 8:30 a.m. for World Cup matches and show any games airing after they open (9 a.m. on weekends, 9:30 a.m. weekdays). Burgers, sandwiches and bar appetizers like mozzarella sticks and buffalo wings make up the menu. And if watching sports compels you to take part in some, there's a sand volleyball court, pool tables and Ping-Pong on hand.

The Sports Page, 1431 Plymouth St., Mountain View; 650-961-1992, sportspagesf.com.

Gourmet Haus Staudt, Redwood City: The German restaurant and beer garden is only showing games featuring Germany, Mexico and the United States. Doors will open a half-hour before start time. Gourmet Haus Staudt's menu includes a range of German specialties, from bratwurst to pork schnitzel and Bavarian pretzels, and a daily rotation of 25 draft beers (11 German and 14 craft), plus bottled beer, cider and wine. There's even a market with German goods and a bottle shop for take-home beer and cider. Prost!

Gourmet Haus Staudt, 2615 Broadway, Redwood City;

650-364-9232, gourmethausstaudt.com. Instagram: @gourmethausstaudt.

Taplands, Santa Clara: The taproom, bottle shop and brewery will open early for the U.S. vs. England game Nov. 25, with additional games to be announced. Taplands offers 25 rotating craft beers, a cooler of craft beers and growlers of its own beer when available. Its food menu consists of charcuterie, cheese plates and paninis.

Taplands, 1171 Homestead Road, Santa Clara; 408-709-2990, taplands.com. Instagram: @taplandssantaclara.

The Rose & Crown Pub, Palo Alto: The oldest bar in town, the English pub has over 20 rotating craft beers on tap and a drink menu of assorted cocktails and whiskeys. It serves standard English pub fare, including fish and chips and cottage pie. The pub says it will be open for "many games;" check back on Instagram for a schedule.

The Rose & Crown Pub, 541 Emerson St., Palo Alto; 650-327-7673, therosepa.com. Instagram: @theroseandcrownpa. ■

*Email Editor
Julia Brown at jbrown@embarcaderopublishing.com.*

The local's guide to the Bay Area food scene.

Peninsula Foodist

Read about hot spots, restaurant trends and the lifestyles of those who love everything about food.

See you at the table.

Kate
Editor, Peninsula Foodist

Sign up to receive the Peninsula Foodist newsletter at paloaltoonline.com/express/foodist/

Public Notices

995 Fictitious Name Statement

TACOS EL GRULLENSE C&D #4
FICTITIOUS BUSINESS NAME STATEMENT
File No.: M-292378
The following person(s) is (are) doing business as:
Tacos El Grullense C&D #4, located at 575 Ralston Ave., Belmont, CA 94002, San Mateo County.
Registered owner(s):
TACOS EL GRULLENSE C&D #4 INC.
10 Danford Court
Redwood City, CA 94062
This business is conducted by: A Corporation.
State of Incorporation: CA
The registrant commenced to transact business under the fictitious business name(s) listed above on N/A.
This statement was filed with the County Clerk-Recorder of San Mateo County on October 5, 2022.
(ALM Nov. 4, 11, 18, 25, 2022)

TACOS EL GRULLENSE C&D
FICTITIOUS BUSINESS NAME STATEMENT
File No.: M-292386
The following person(s) is (are) doing business as:
Tacos El Grullense C&D, located at 60 31st Ave, San Mateo, CA 94403, San Mateo County.
Registered owner(s):
TACOS EL GRULLENSE C&D INC.
10 Danford Court
Redwood City, CA 94062
This business is conducted by: A Corporation.
State of Incorporation: CA
The registrant commenced to transact business under the fictitious business name(s) listed above on 11/14/2018.
This statement was filed with the County Clerk-Recorder of San Mateo County on October 6, 2022.
(ALM Nov. 4, 11, 18, 25, 2022)

TACOS EL GRULLENSE GRILL & BAR
FICTITIOUS BUSINESS NAME STATEMENT
File No.: M-292712
The following person(s) is (are) doing business as:
Tacos El Grullense Grill & Bar, located at 2525 El Camino Real, Redwood City, CA 94061, San Mateo County.
Registered owner(s):
TEG-CKD INC.
10 Danford Court
Redwood City, CA 94061
This business is conducted by: A Corporation.
State of Incorporation: CA
The registrant commenced to transact business under the fictitious business name(s) listed above on 10/19/2017.
This statement was filed with the County Clerk-Recorder of San Mateo County on November 14, 2022.
(ALM Nov. 25; Dec. 2, 9, 16, 2022)

TACOS EL GRULLENSE #1
FICTITIOUS BUSINESS NAME STATEMENT
File No.: M-292381
The following person(s) is (are) doing business as:
Tacos El Grullense #1, located at 1243 Middlefield Rd., Redwood City, CA 94063, San Mateo County.
Registered owner(s):
TEG-CKD INC.
10 Danford Ct.
Redwood City, CA 94062
This business is conducted by: A Corporation.
State of Incorporation: CA
The registrant commenced to transact business under the fictitious business name(s) listed above on 10/19/2017.
This statement was filed with the County Clerk-Recorder of San Mateo County on October 5, 2022.
(ALM Nov. 4, 11, 18, 25, 2022)

HINENI: JEWISH AND NATURE BASED GRIEF SUPPORT

FICTITIOUS BUSINESS NAME STATEMENT
File No.: M-292568
The following person(s) is (are) doing business as:
Hineni: Jewish and Nature Based Grief Support, located at 801 North Humboldt Street, Suite 405, San Mateo, CA 94401, San Mateo County.
Registered owner(s):
JON AVRAM SOMMER
801 North Humboldt Street, Suite 405
San Mateo, CA 94401
This business is conducted by: An Individual.
The registrant commenced to transact business under the fictitious business name(s) listed above on N/A.
This statement was filed with the County Clerk-Recorder of San Mateo County on October 26, 2022.
(ALM Nov. 4, 11, 18, 25, 2022)

GULFSTREAM DRILLING 1978
GULFSTREAM DRILLING 1979
LEEDEY DRILLING VENTURES
FICTITIOUS BUSINESS NAME STATEMENT
File No.: M-292527
The following person(s) is (are) doing business as:
1.) Gulfstream Drilling 1978, 2.) Gulfstream Drilling 1979, 3.) Leedeey Drilling Ventures, located at 7 Lloyd Drive, Atherton, CA 94027, San Mateo County.
Registered owner(s):
WILLIAM JAMES MASSEY, JR.
7 Lloyd Drive
Atherton, CA 94027
This business is conducted by: An Individual.
The registrant commenced to transact business under the fictitious business name(s) listed above on N/A.
This statement was filed with the County Clerk-Recorder of San Mateo County on October 25, 2022.
(ALM Nov. 4, 11, 18, 25, 2022)

WOODSIDE MAIL OFFICE
FICTITIOUS BUSINESS NAME STATEMENT
File No.: M-292506
The following person(s) is (are) doing business as:
Woodside Mail Office, located at 2995 Woodside Road Suite 400, Woodside, CA 94062, San Mateo County.
Registered owner(s):
WOODSIDE VENTURES CORP
2995 Woodside Road Suite 400
Woodside, CA 94062
This business is conducted by: A Corporation
State of Incorporation: CA.
The registrant commenced to transact business under the fictitious business name(s) listed above on 10/24/2022.
This statement was filed with the County Clerk-Recorder of San Mateo County on October 24, 2022.
(ALM Nov. 4, 11, 18, 25, 2022)

STATEMENT OF ABANDONMENT OF USE OF FICTITIOUS BUSINESS NAME
The following person(s) has/have abandoned the use of the fictitious business name(s). The information given below is as it appeared on the fictitious business statement that was filed at the County Clerk-Recorder's Office.
File No. M-292147
FICTITIOUS BUSINESS NAME(S):
WOODSIDE MAIL OFFICE
2995 Woodside Road, Suite 400
Woodside, CA 94062
FILED IN SAN MATEO COUNTY ON:
09/13/2022.
UNDER FILE NO. M-292147
REGISTRANT'S NAME(S):
MAIL OFFICE OF AMERICA, INC.
2995 Woodside Road, Suite 400
Woodside, CA 94062
THIS BUSINESS WAS CONDUCTED BY a corporation, State of Incorporation: CA
This statement was filed with the County Clerk Recorder of San Mateo County on October 27, 2022.
(ALM Nov. 4, 11, 18, 25, 2022)

ABC CHAUFFEURED LIMOUSINES-SEDANS
ABC LIMOUSINES-SEDANS-VANS-
WORLDWIDE TRANSPORT
FICTITIOUS BUSINESS NAME STATEMENT
File No.: M-292593
The following person(s) is (are) doing business as:
1.) ABC Chauffeured Limousines-Sedans, 2.) ABC Limousines-Sedans-Vans-Worldwide Transport, located at 15 S Bayshore Blvd., San Mateo, CA 94401, San Mateo County.
Registered owner(s):
D E M Enterprises Inc.
15 S Bayshore Blvd
San Mateo, CA 94401
This business is conducted by: A Corporation.
The registrant commenced to transact business under the fictitious business name(s) listed above on 10/28/2022.
This statement was filed with the County Clerk-Recorder of San Mateo County on October 28, 2022.
(ALM Nov. 4, 11, 18, 25, 2022)

VIRUS GEEKS
FICTITIOUS BUSINESS NAME STATEMENT
File No.: M-292619
The following person(s) is (are) doing business as:
Virus Geeks, located at 330 N Brand Blvd, Glendale, CA 91203, Los Angeles County; Mailing Address: 951 Mariners Island Blvd, San Mateo, CA 94404.
Registered owner(s):
MATRIX DIAGNOSTICS INC
320 N Brand Blvd
Glendale, CA 91203
This business is conducted by: A Corporation.
The registrant commenced to transact business under the fictitious business name(s) listed above on 5/13/2022.
This statement was filed with the County Clerk-Recorder of San Mateo County on November 01, 2022.
(ALM Nov. 11, 18, 25; Dec. 2, 2022)

AMERICA'S GARAGE DOORS
FICTITIOUS BUSINESS NAME STATEMENT
File No.: M-292565
The following person(s) is (are) doing business as:
America's Garage Doors, located at 1622 Michigan Avenue, East Palo Alto, CA 94303, San Mateo County.
Registered owner(s):
RALPH GOMEZ JR.
1622 Michigan Ave
East Palo Alto, CA 94303
This business is conducted by: An Individual.
The registrant commenced to transact business under the fictitious business name(s) listed above on 10/03/2022.
This statement was filed with the County Clerk-Recorder of San Mateo County on October 26, 2022.
(ALM Nov. 11, 18, 25; Dec. 2, 2022)

GEOFFREY'S DIAMONDS & GOLDSMITH
FICTITIOUS BUSINESS NAME STATEMENT
File No.: M-292562
The following person(s) is (are) doing business as:
Geoffrey's Diamonds & Goldsmith, located at 1312 Laurel St #102, San Carlos, CA 94070, San Mateo County.
Registered owner(s):
GEOFFREY'S DIAMONDS
681 Alexandra Ct
San Jose, CA 95125
This business is conducted by: A Corporation, State of Incorporation: CA
The registrant commenced to transact business under the fictitious business name(s) listed above on N/A.
This statement was filed with the County Clerk-Recorder of San Mateo County on October 26, 2022.
(ALM Nov. 11, 18, 25; Dec. 2, 2022)

COMMUNITY BRIEFS

Atherton tree lighting ceremony

The town of Atherton and the Atherton Library will host a tree lighting ceremony on Thursday, Dec. 1, in the civic center at 80 Fair Oaks Lane, from 3:30 to 5 p.m.

The event will feature gingerbread houses, hot cocoa, apple cider, ornaments to decorate and a chance to take photos with Santa Claus.

Adelante Selby Lane School toy drive

The Atherton Police Department's Police Activities League and Police Officers' Association are hosting an annual toy drive for students at Adelante Selby Spanish Immersion School in Atherton.

Donors have until Monday, Dec. 19 to drop off an unwrapped toy for children age 5 to 10 at the Police Station, 80 Fair Oaks Lane.

Suggested gifts include art supplies, Legos, science project kits, Hot Wheels, blankets, warm clothes, beads and jewelry making kits, dolls, action figures, and basketball or soccer balls.

Openings on Portola Valley Planning Commission

The Portola Valley Town Council is seeking two volunteers to serve on the town's Planning Commission. One of the terms expires in December 2023 and the other expires in December 2024, according to a town announcement.

The Planning Commission consists of five members appointed by the Town Council, and meetings are held on the first and third Wednesdays of the month. The commission provides recommendations to the Town Council on legislative actions such as amendments to the zoning code and the general plan.

To apply, submit a letter of interest to the Town Council at towncenter@portolavalley.net by 5 p.m. on Monday, Dec. 19. The Town Council will conduct interviews at a meeting on Jan. 4 from 2 to 5 p.m.

This time is subject to change, dependent on the number of interviews to be conducted. For more information, contact the Town Clerk Melissa Thurman at towncenter@portolavalley.net.

TeacherUp to launch in 2023

Two local nonprofits are teaming up on an initiative to help address the severe shortage of early childhood educators across the Bay Area by providing academic and career support for adult immigrants.

The program, dubbed TeacherUp, will be run by Upward Scholars and Community Equity Collaborative. Upward Scholars offers financial, academic and career development support to adults struggling with economic hardship so they can transition from adult schools to community colleges and attend college part-time. Community Equity Collaborative, a Menlo Park-based nonprofit, was formed in 2017 to help solve educational inequities.

"Early childhood educators are an essential ingredient in the human infrastructure that supports healthy families and strong, local economies," said Community Equity Collaborative (CEC) Executive Director Dayna Chung in a statement. "Unfortunately, COVID-19 revealed and exacerbated systemic inequities, including poverty wages that drive the early educator shortage and force roughly one in three parents to take time off or leave their jobs."

The program builds on the Teacher Pipeline Project, formed in 2018 by CEC to assist community members to enroll in early childhood teaching programs and provided them with stipends, employer connections and webinars.

Latina educators represent one of the largest ECE workforce demographics in the Bay Area yet are among the lowest paid, according to a joint press release from the organizations.

TeacherUp will also complement NannyUp, a joint venture between Upward Scholars and The Institute for Families and Nannies. ■

—Angela Swartz

The Almanac is adjudicated to publish in San Mateo County.

Public Hearing Notices • Resolutions • Bid Notices • Lien Sale Notices of Petition to Administer Estate • Trustee's Sale

Deadline is Monday at noon.

Call Alicia Santillan at 650-223-6578 or email asantillan@paweekly.com for assistance with your legal advertising needs.

Visit

Lasting Memories

An online directory of obituaries and remembrances. Search obituaries, submit a memorial, share a photo.

Go to: AlmanacNews.com/obituaries

‘Little Shop of Horrors’ finds new meaning in San Francisco’s Chinatown

TheatreWorks’ updated setting brings new perspective to cult-classic show

By Emily Margaretten

Reviving the Broadway musical “Little Shop of Horrors,” TheatreWorks Silicon Valley is adding a twist to the production this holiday season; it’s transplanting the setting to San Francisco’s Chinatown, offering an updated, multicultural perspective about the human toll of capitalism.

“It’s a satire and a cautionary tale about greed and about the issues of living life under a scarcity model,” Director Jeffrey Lo said. “And so, with that in mind, I thought San Francisco’s Chinatown was perfect. Because, for me, San Francisco is a poster child of what happens to a vibrant and artistically whole community when gentrification hits that area.”

The musical tells the story of Seymour (Phil Wong), who brings fame and fortune to the small, rundown florist shop where he

works after he accidentally raises a spectacular houseplant. But there’s a catch: the plant has a secret appetite for blood.

Lo teamed up with scenic designer and longtime collaborator Christopher Fitzer, and the two worked closely together to get the show off the ground. Hired on a Friday, Fitzer said he and Lo were in Chinatown the following Wednesday, visiting shops and taking photographs of the neighborhood for design ideas.

The production’s scenery is a tapestry of Chinese architectural and stylistic elements, Fitzer said. The older red brick buildings immediately drew his eye, as did the quirky configurations of HVACs and pipes wrapping around buildings. Hyper-stylized elements traditionally associated with Chinatown, like pagoda rooftops, also made it into the set. The signage was important

as well, particularly for Lo who wanted to capture the pairing of English words and Chinese characters side by side, a visual cue that references immigrants’ experiences of not needing to speak English in Chinatown. The fonts used on the signs, which replicate fonts in Chinatown, also reveal the production’s close attention to detail.

The atmosphere of Chinatown’s alleyways played a significant role in the design elements too. The original 1960 film was set in a New York City neighborhood called Skid Row. Fitzer created a parallel environment for the TheatreWorks production, with the backdrop revealing a vibrant but less prosperous part of Chinatown.

While he elevated certain design features, like alleyways, Fitzer downplayed and altered other visual elements that did not translate well into a theater set design. The musical’s focal point — a flower shop — is very different from what he encountered in Chinatown. “A lot of them are white, like supremely white, which is beautiful and shows off the flowers very well. But not great for theater — a big white block,” Fitzer said.

The close-knit community feel of Chinatown meanwhile stayed intact. Observing interactions in Chinatown, Fitzer treated the neighborhood as a living entity and not as an ahistorical artifact. The buildings depicted on stage, which Lo described as downtrodden but well-loved, reflect the struggles of the characters resisting the destabilizing effects of gentrification — a story that resonates with the real-life struggles of Chinatown’s residents.

“When you look specifically at San Francisco’s Chinatown, you see a community that’s fighting tooth and nail against gentrification,” Lo said. “They want to keep what makes their community diverse; they want to keep what makes their community unique and vibrant, and they want to essentially keep their culture alive



Courtesy Andria Lo

Seymour (Phil Wong) unintentionally raises an unusually demanding houseplant that brings fame and fortune, along with plenty of troubles, in TheatreWorks Silicon Valley’s new production of “Little Shop of Horrors,” which has been reset in San Francisco’s Chinatown.

amongst all this gentrification happening around them.”

Another key piece to the production is the casting. Approximately half of the performers are of Asian descent. The Chinatown setting opens up new possibilities for thinking about cultural identities and relationships, Lo said. Even though the text is the same, it takes on different meanings and inflections with a multicultural cast.

“Parental relationships hit a certain way to the Asian American community and having immigrant parents speak to you in a certain way, it just sounds and feels so different,” Lo said.

The reimaged setting and casting also helps audience members from diverse backgrounds

see themselves better represented in theater, something that does not happen often enough, Lo said. “It celebrates what makes us different and unique and celebrates what makes us similar,” he added. “Little Shop of Horrors” is playing Nov. 30-Dec. 24 at the Lucie Stern Theatre, 1305 Middlefield Road, Palo Alto. The production offers ASL Interpretation Dec. 13; open captioning Dec. 18 and 21 and audio description Dec. 17 and 23-24. Assisted listening devices are available at every performance. Tickets start at \$30. 877-662-8978 or theatreworks.org. ■

Email Editorial Intern Emily Margaretten at emargaretten@embarcaderopublishing.com.



Courtesy Andria Lo

“Little Shop of Horrors” features Phil Wong as Seymour and Sumi Yu as Audrey in a new take that moves the show’s setting to San Francisco’s Chinatown. Director Jeffrey Lo and scenic designer Christopher Fitzer took inspiration from a visit to Chinatown to research the show’s look, and the neighborhood also provided the backdrop for this publicity photo.

All are welcome on an inclusive trip to the Land of Sweets

Pacific Ballet Academy stages a sensory-friendly production of 'The Nutcracker'

By Heather Zimmerman

From its initial setting at a family Christmas Eve party to its second-act extravaganza of dancing confections, led by the famed Sugar Plum Fairy, it's easy to see why "The Nutcracker" ballet has become a seasonal staple for families.

To ensure that more families have a chance to enjoy the holiday spectacle, Pacific Ballet Academy is offering a sensory- and autism-friendly "Nutcracker" performance on Nov. 27 at the Mountain View Center for the Performing Arts (MVCPA). The show will cap off the academy's run of "The Nutcracker," featuring its students, Nov. 25-27.

The Nov. 25 and 26 performances feature a full-length, two-hour production, and on Nov. 27, the company will present Act I of "The Nutcracker" at noon, a 45-minute performance suited for small children who may not be able to sit through a longer show. Then at 2 p.m., the company will present its sensory-friendly performance of the ballet's Act II, in a setting with scaled-down production elements like lighting and sound.

"I also come out on stage, I tell them the story and what to expect and things like you clap at the end," said Pacific Ballet Academy Director Rima Chaeff.

For audience members that feel overwhelmed, there are stress balls to squeeze, and if being in the theater becomes

too much, the lobby will have a quiet zone, where people can watch the show on monitors.

The show also features lighting in the audience area for anyone who may be afraid of the dark and the overall atmosphere in the theater will be more relaxed when it comes to audiences talking or reacting during the performance.

"I think there's a real joy in knowing that you bring your child and they can stand up, they can make noises and they're not going to be judged," Chaeff said.

She also pointed out that the performance is open to everyone, so families with children who don't have sensory issues or autism, but would enjoy a more relaxed atmosphere and shorter performance are welcome to attend.

Chaeff noted that the academy is not the first to offer such a performance in the area — Menlowe Ballet for several years presented an abbreviated, sensory-friendly performance of its holiday show, "It's a Wonderful Nutcracker," and Peninsula Youth Theatre, which frequently performs at MVCPA, has also offered similar performances.

Pacific Ballet Academy's sensory-friendly performance came about after MVCPA Booking Coordinator Jenn Poret approached Chaeff with the idea several years ago after some of the center's staff attended a conference.

"She (Poret) came back saying, 'We have to do this. We just



Courtesy Pacific Ballet Academy

Pacific Ballet Academy dancers perform the Sugar Plum Fairy pas de deux in "The Nutcracker." The school will offer a sensory-friendly performance Nov. 27.

have to be more open and more inclusive.' So she reached out to me and asked if I would be willing to do this," Chaeff said.

They worked with a consultant to design a show suited for young audience members who might be overwhelmed by many elements of a traditional

production and theater-going experience.

The Mountain View Center for Performing Arts also offers a "pre-visit" guide that helps prepare for a theatrical experience. The guide describes a typical visit to the theater, with photos and short descriptions that cover the many sights and sounds that a visitor can expect to encounter when going to see a show.

Though the ballet is overall quite family-friendly, Chaeff said that for the sensory-friendly show, the company settled on presenting Act II, which sees main character Clara transported to a magical land of sweets who dance for her. Its whimsical setting and series of short dances made it the best fit.

"We decided against doing the first act because there's a party scene which is actually very nice, but there's also a fight scene," she said, which may be difficult for some viewers.

This will be the third time that Pacific Ballet Academy has staged a sensory-friendly performance. The company presented it once before the pandemic and then again last year.

Chaeff said that several of her own friends with autistic children, including a longtime friend who's experienced the ballet from the other side of the

footlights, have attended.

"She was a former student of mine who was in the original 'Nutcracker.' She brought her son and I think she was really happy to be able to share with him something that was such a big part of her life," she said.

As for what audiences take away from the performance, Chaeff said, "I just hope that they enjoy the wonderful music and dancing and that it gets them in the holiday spirit and that they relax and enjoy it along with their children. I want to have as many people enjoy 'The Nutcracker' as possible."

The Pacific Ballet Academy's sensory-friendly Nutcracker takes place Nov. 27, 2 p.m. and is preceded by a performance of Act I only at noon. Tickets for either performance are \$15. The company's full-length performances take place Nov. 25, 6 p.m. and Nov. 26, 1 and 6 p.m.. Tickets are \$25-\$40. All performances are held at the Mountain View Center for Performing Arts, 500 Castro St., Mountain View. 650-903-6000 or tickets.mvcpa.com. ■

Email Arts & Entertainment Editor Heather Zimmerman at hzimmerman@almanacnews.com.



Courtesy Pacific Ballet Academy

Mother Ginger and her children are among the dancing confections who populate the Land of Sweets in the second act of "The Nutcracker," which is featured in Pacific Ballet Academy's sensory-friendly performance.

The first step in planning your weekend starts here

Weekend @express

Your weekly email
with tips and insights
about hot events
and cool activities

- Music
- Movies
- Art exhibits
- Lectures & learning
- Eating out
- Fun & free
- Theater

SIGN UP AT

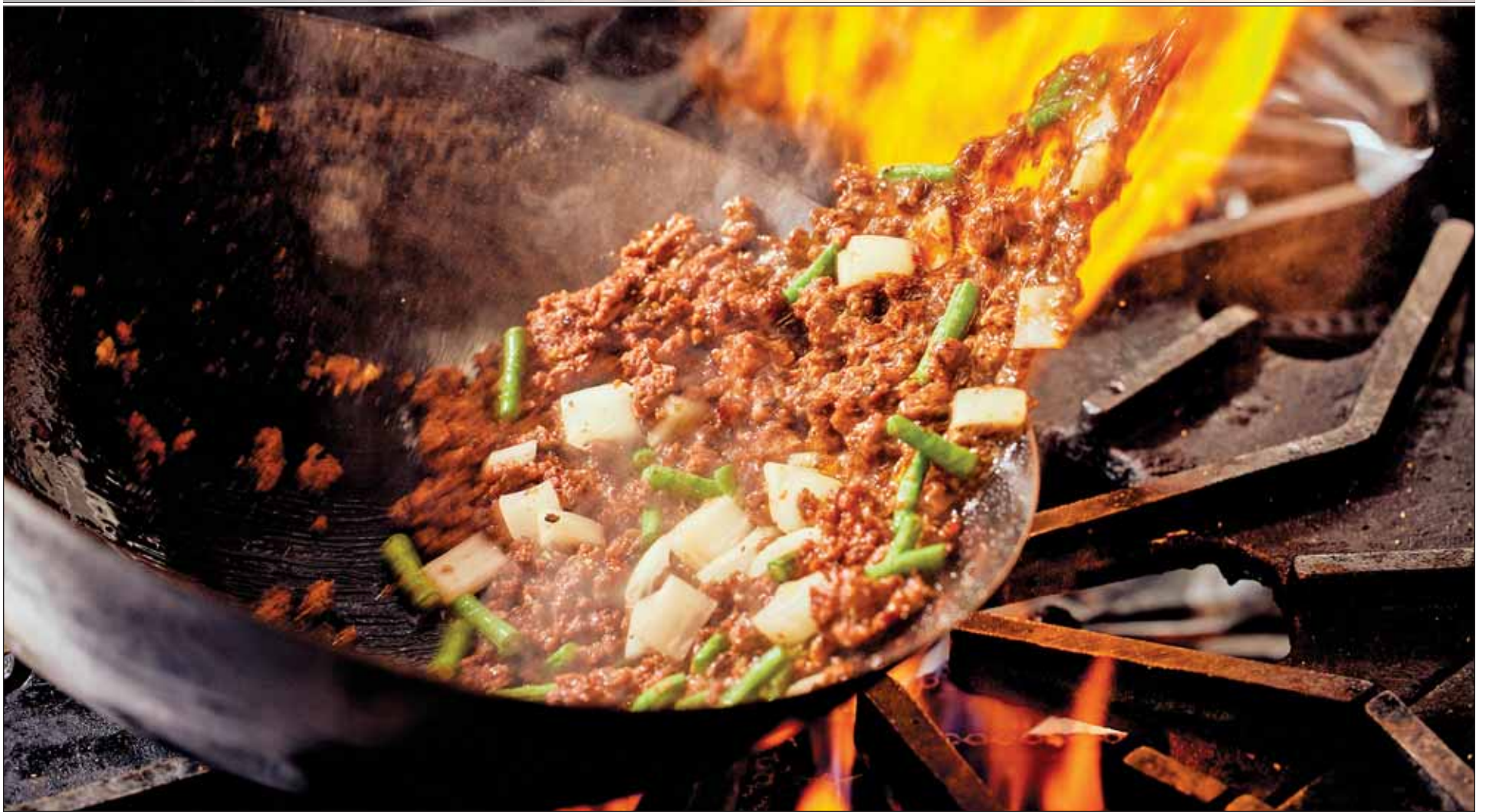
[www.AlmanacNews.com/
express/weekend](http://www.AlmanacNews.com/express/weekend)

Presented by

The Almanac



Food & Drink



Courtesy Kelly Puleio

Mamu, a mushroom-based meat substitute, was the centerpiece of a four-course tasting menu by chef Srijith Gopinathan.

FINESSING FUNGI

A mushroom-based meat alternative is making its debut

By Kate Bradshaw

When it comes to trends in the sustainable food movement, the elusive plant-based meat alternative is often presented as a buzzy panacea. Now, there's a fungus-based meat alternative debuting on the market, making waves in Silicon Valley's high-end kitchens.

Called Mamu, the mushroom-based substance developed by Sempera Organics comes

packaged like ground beef and has already made appearances at Palo Alto's Ettan and is coming soon to Los Altos' Little Blue Door and Sunnyvale's Oxford Kitchen and Gastropub.

Made from ground mushrooms grown on chickpeas and then treated to remove some of the mushroom flavor, Mamu is gluten- and allergen-free, according to Sempera Organics CEO Nirmal Nair. There's no flavoring or salt.

As plant-based options expand in part as a response to climate change, Mamu joins a market populated with existing brand-name meat alternatives produced by companies like Beyond Meat and Redwood City-based Impossible Foods that have partnered with restaurants and major chains nationwide. But it's one of the few purveyors that has involved chefs in the tasting and testing process from the early stages, according to Ettan and Little Blue Door chef Srijith

Gopinathan, chief culinary officer at Sempera Organics.

The ingredient — so named as an inverted and truncated form of the word umami — was the centerpiece of a recent preview meal I participated in to introduce it to local food journalists and investors. Held at Mista, a San Francisco-based accelerator for food innovation companies, the meal featured four rounds of vegetarian dishes prepared by Gopinathan, ranging from Mamu gnocchi with pine nuts, squash, kale and brown butter to pad krapow Mamu, served with long beans and holy basil over jasmine rice.

Before the meal, Nair talked about how the company is aiming to scale quickly to sustainably feed many people. Part of the goal spurring the development of a meat substitute based on mushrooms is sustainability, according to the product's website, which claims that growing mushrooms uses 98% less fresh



Courtesy Kelly Puleio

Polpetta di Mamu, or Mamu meatballs, are hand rolled.

water than other vegetables, generates 85 times less carbon dioxide than beef production and uses 99.7% less land than soy production.

The mushrooms are grown in a zero-waste Morgan Hill indoor lab and farm, and are, as Nair put it, "spore to store-ready." Mamu comes from a blend of shiitake, king oyster and white mushrooms and is blended with chickpeas, canola oil and water. It's developed from both the mycelium, or root system, and the fruiting body of the mushroom, according to a press statement.

In an interview, Gopinathan said he signed on about 14 months ago to be the chief culinary officer at Sempera Organics when he had some extra time during the pandemic. He started testing out the mushroom-based product in the kitchen, presenting to the team what he did and didn't like, and trying cooking using different techniques. Over time, he said he got to a point where he felt comfortable making new dishes with it and serving it. In its current state, Mamu can be sauteed, grilled, fried, baked, poached, broiled, seared and emulsified.

LEHUA GREENMAN



*"Let our
Hearts be full
of both, Thanks
and Giving."*



650.245.1845 COMPASS



Courtesy Kelly Puleio

Mamu, a mushroom-based meat alternative, is available in a few local restaurants.



Courtesy Kelly Puleio

Mamu, a mushroom-based meat alternative developed with the guidance of chef Srijith Gopinathan, has a ground beef-like texture.

So many food companies start with the food science aspect and leave the chefs out until the end, but food is about both art and science, he says. Moving forward, he's working to collect input on the product from other local high-end chefs sampling the product, including Jarad Gallagher, former executive chef of Mountain View's Michelin-starred Chez TJ restaurant.

"Mamu retains moisture throughout the cooking process,

resulting in a juicy, flavorful experience," Gopinathan said in a recent statement. "It freezes well, thaws and cooks quickly, easily absorbing flavor, and yields a delicious finished meal every time."

He's using the ingredient at Ettan in a wild mushroom dish using Mamu kofta with coconut korma and Idiyappam noodles. It's been on the menu for about a week and has been well-received so far, he says.



Courtesy Kelly Puleio

Sempera Organics' Chief Culinary Officer Srijith Gopinathan, Chief Executive Officer Nirmal Nair and Chief Mycologist Dr. Dennis Desjardin.

"Working on the evolution of this is a fun little thing I enjoy doing aside from my daily hustle-y restaurant life," Gopinathan says. "Every day we are working on how to improve and make cooking and eating easier, more effortless, nutritious and fun-filled."

Also on the Sempera Organics team is Chief Mycologist Dennis Desjardin, a retired mycology professor and evolutionary biologist at San Francisco State University. He says he was hired on to make sure the company's findings are "real science," because in the nutraceutical world — that is, the world of dietary supplements — junk science is more common than he'd like.

He says he's excited to be applying his decades of research in the real world and is using

his background to help figure out how to grow mushrooms that can hold more protein or vitamin B content, for instance, thereby boosting their nutritional value.

As it launches Mamu, the Sempera Organics team hopes to work with more chefs and expand the product's use in restaurants in the months to come.

The ingredient is still a work in progress, Gopinathan says. "There's a lot of work to do."

"We are actively seeking feedback from chefs and restaurateurs to improve the ingredient and make it truly impactful," he says.

Interested chefs and restaurant owners can request samples at eatmamu.com.

Ettan, 518 Bryant St., Palo Alto; 650-752-6281, Instagram: @ettanrestaurant.

Little Blue Door, State Street Market, 170 State St., Los Altos; Instagram: @littlebluedoorrestaurant.

Oxford Kitchen & Gastropub, 195 S Murphy Ave., Sunnyvale; 408-245-8503, Instagram: @theoxfordca.

Email Associate Digital Editor Kate Bradshaw at peninsulafoodist@embarcaderopublishing.com.

Dig into food news. Follow the Peninsula Foodist on Instagram @peninsulafoodist and subscribe to the newsletter at almanacnews.com/express/foodist to get insights on the latest openings and closings, learn what the Foodist is excited about eating, read exclusive interviews and keep up on the trends affecting local restaurants.



Courtesy Kelly Puleio

Smoked Mamu kebabs prepared by chef Srijith Gopinathan.



Courtesy Kelly Puleio

Mamu gnocchi is served with butternut squash and pine nuts.



YOUR NEW HOME AWAITS

522 BAY ROAD
MENLO PARK



\$4,750,000 | 5 Bd | 5.5 Bth
522Bay.com

33 EMILIE AVENUE
ATHERTON



\$18,988,000 | 7 Bd | 11 Bth
33Emilie.com

1868 VALPARAISO AVE
MENLO PARK



\$5,388,000 | 4 Bd | 4.5 Bth
1868Valparaiso.com

485 FERNE AVENUE
PALO ALTO



\$3,488,000 | 4 Bd | 2 Bth
485Ferne.com

363 CHANNING AVENUE
PALO ALTO



\$3,988,000 | 3 Bd | 3.5 Bth
363Channing.com

303 ATHERTON AVENUE
ATHERTON



\$16,900,000 | 7 Bd | 8.5 Bth
303Atherton.com

30 REGENT PLACE
PALO ALTO



\$4,488,000 | 4 Bd | 3 Bth
30RegentPL.com

13581 WILDCREST DRIVE
LOS ALTOS HILLS



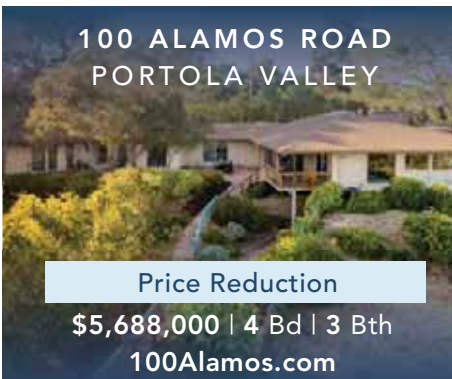
\$4,988,000 | 5 Bd | 4.5 Bth
13581WildcrestDR.com

750 LINCOLN AVENUE
PALO ALTO



Seller Financing Available
\$4,988,000 | 5 Bd | 4.5 Bth
750Lincoln.com

100 ALAMOS ROAD
PORTOLA VALLEY



Price Reduction
\$5,688,000 | 4 Bd | 3 Bth
100Alamos.com

1054 MOFFETT CIRCLE
PALO ALTO



\$2,788,000 | 4 Bd | 2 Bth
1054Moffett.com

75 ISABELLA AVENUE
ATHERTON



\$26,580,000 | 2.56 Acres
75Isabella.com

27340 JULIETTA LANE
LOS ALTOS HILLS



\$4,988,000 | 4 Bd | 3.5 Bth
27340Julietta.com

5925 ALPINE ROAD
PORTOLA VALLEY



\$4,650,000 | 5 Bd | 6 Bth
5925Alpine.com



SCAN THE QR CODE
FOR MORE DETAILS

OR VISIT US AT
DELEONREALTY.COM

REAL ESTATE SEMINAR

How to prepare your home to sell in a shifting market



December 8, 2022
6:00 - 8:00 PM



ShowPlace Icon Theatre
2575 California St. #90, Mountain View



Scan to RSVP or
Call 650.543.8500

Michael Repka, DRE #01854880 | 650.900.7000 | michael@deleonrealty.com
中文諮詢請聯繫 Audrey Sun, DRE #01933274 電話: 650.785.5822 | DELEONREALTY.COM | DeLeon Realty, Inc. | DRE #01903224

